



Michigan Flu Focus

Weekly Influenza Surveillance Report



Editor: Sue Kim, MPH

Editor Email: KimS2@michigan.gov

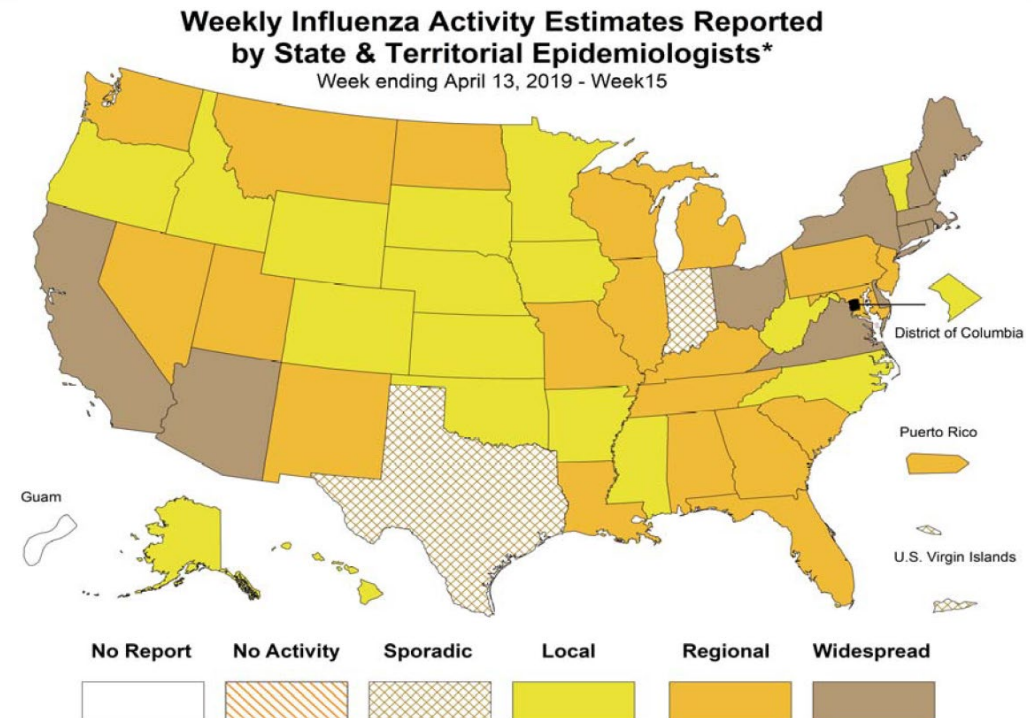
April 19, 2019

Vol. 16; No.28

Week Ending April 13, 2019 | WEEK 15

Michigan Influenza Activity
No Activity
Sporadic
Local
Regional
Widespread

*Clicking on the current activity level will direct you to the CDC webpage defining each activity level for the geographic spread of influenza



Source: CDC FluView

Updates of Interest

The Michigan flu code has officially been decreased from 'Widespread activity to 'Regional' activity for Week 15 based on lowered activity in parts of the Central and Northern regions. See Michigan Influenza Activity (above), for an overview of flu activity definitions.

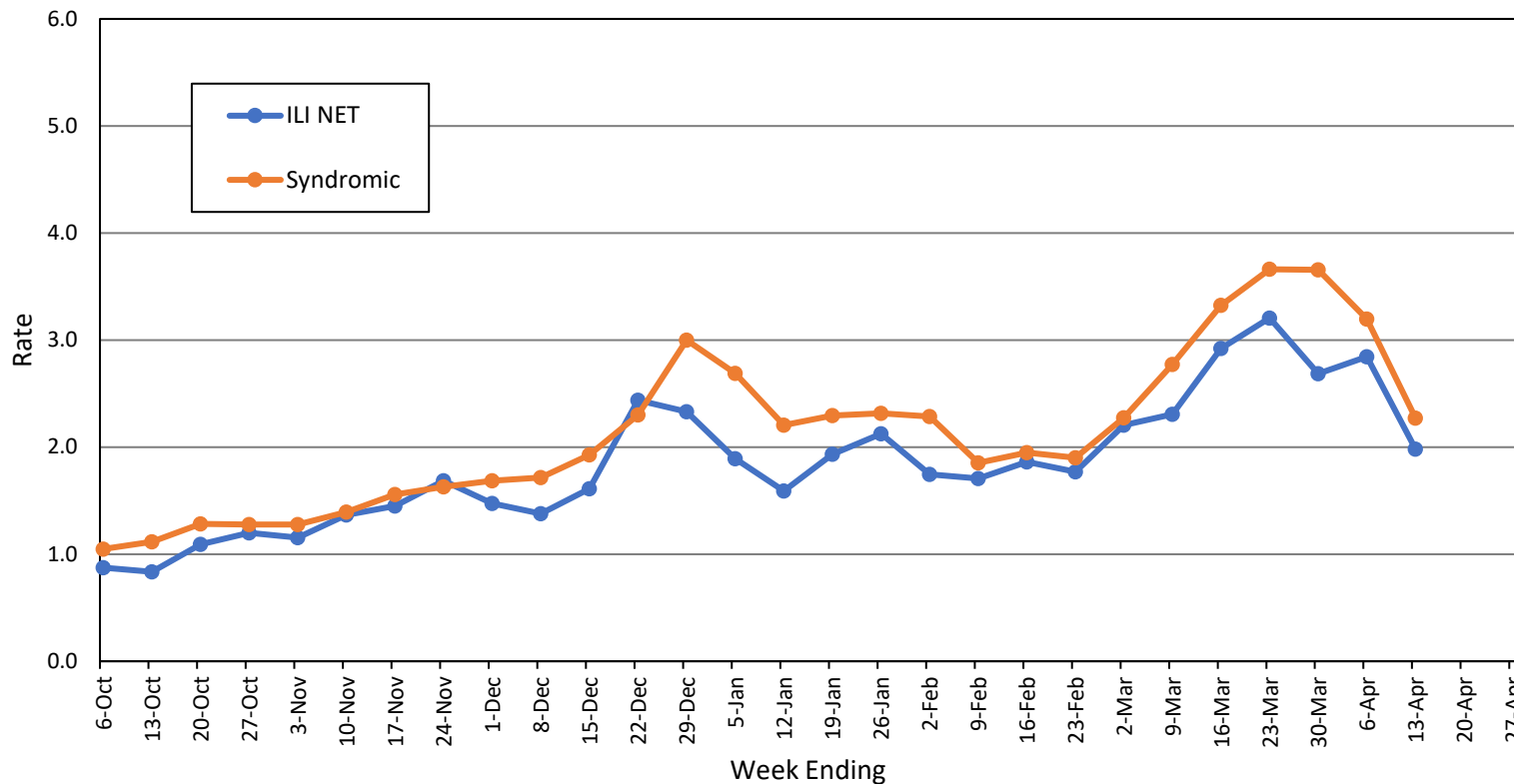
Influenza-associated Pediatric Mortality

One (1) pediatric influenza (A/H1N1-09) death has been confirmed by MDHHS for the 2018-2019 flu season. Nationally, 91 influenza-associated pediatric deaths have been reported thus far for the 2018-2019 flu season.

- Number of reports by region: 31 total [C(9), N(1), SE(16), SW(5)]
- Proportion of visits due to ILI: ↓ 2.0% (regional baseline*: 1.8%)
- A total of 215 patient visits due to ILI were reported out of 10,849 office visits

*Regional baseline is developed by calculating the mean percentage of patient visits for ILI during non-influenza weeks for the previous three seasons and adding two standard deviations.

MI Statewide ILI NET and Syndromic Surveillance Rates, 2018-2019



National Surveillance

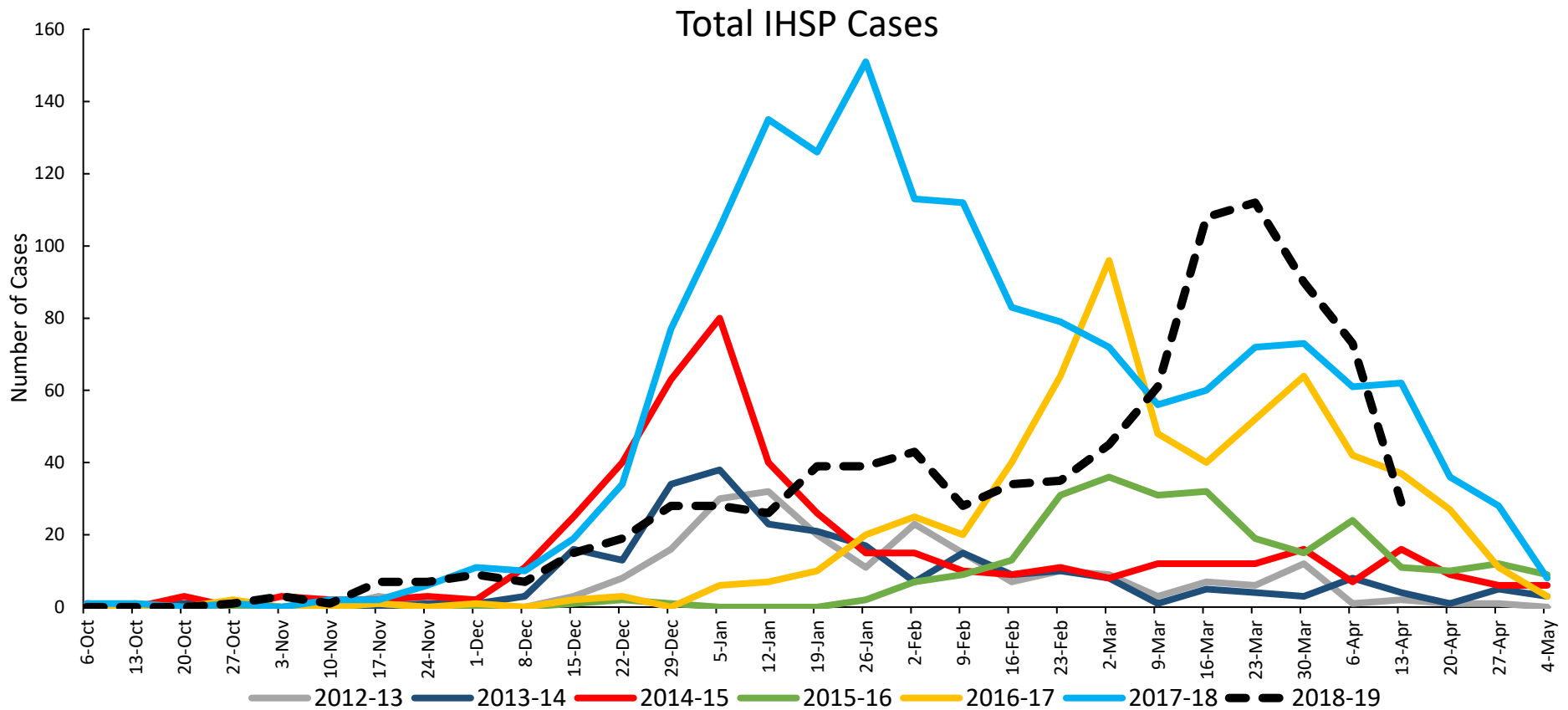
In the United States, 2.4% of outpatient visits were due to influenza-like illness (ILI), which is above the national baseline of 2.2%.

Become a sentinel provider!

Contact Shelly Doeblner at DoeblerM@michigan.gov

Influenza Hospitalization Surveillance Project

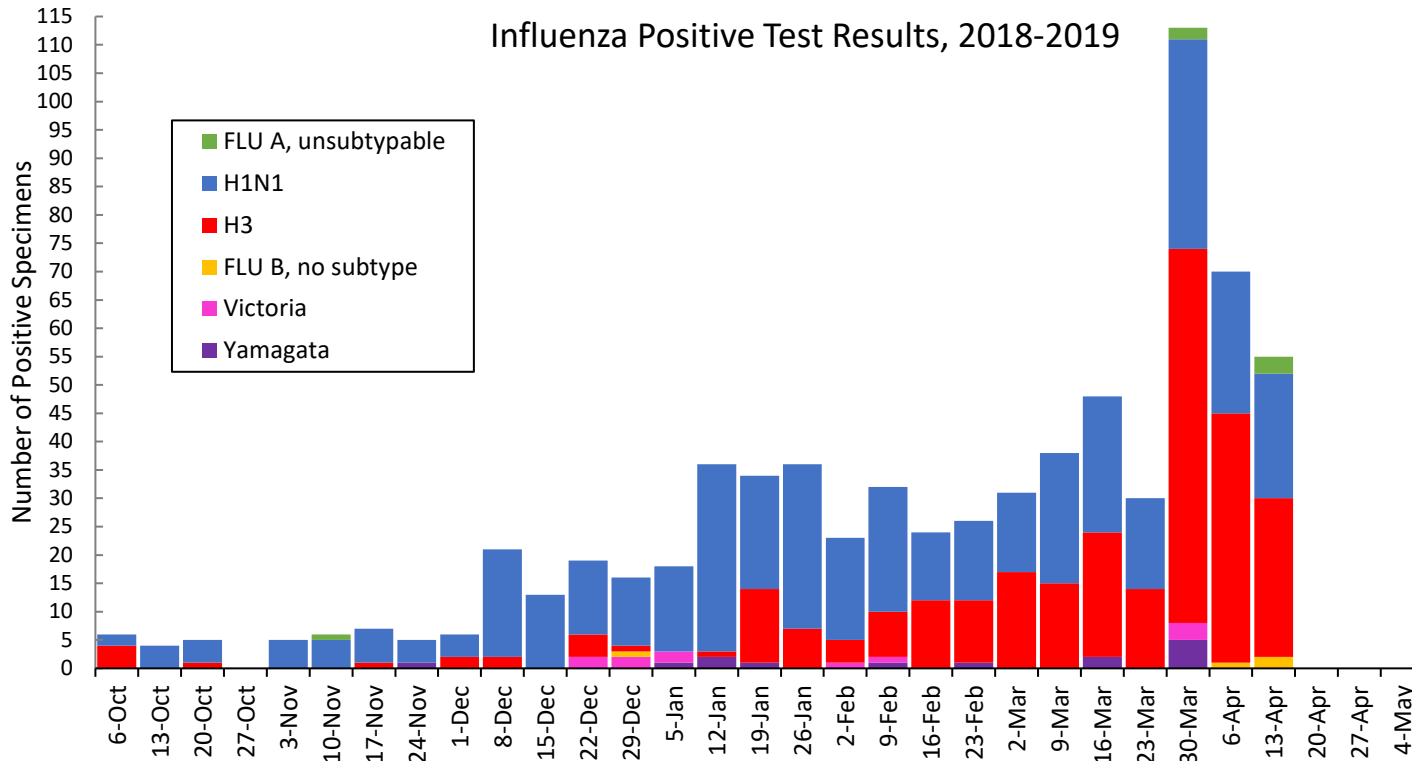
The CDC Influenza Hospitalization Surveillance Project (IHSP) provides population-based rates of hospitalization due to severe influenza-related illness through active surveillance and chart review of lab-confirmed cases from Oct. 1, 2018 until Apr. 30, 2019, for Clinton, Eaton, Ingham, Genesee, and Washtenaw counties. Since Oct. 1, there have been **887 (115 pediatric, 772 adult)** influenza-related hospitalizations reported in the catchment area for the 2018-2019 season.



Washtenaw County was added in 2017-2018

MDHHS Bureau of Laboratories reported 15 new positive influenza results (9C, 0N, 3SE, 3SW)

Respiratory Virus	# Positive Respiratory Virus Results by Region				Overall Total	2017-18 Total
	C	N	SE	SW		
2009 A/H1N1pdm	182	23	51	127	383	80
Influenza A/H3	109	12	16	95	232	579
Influenza B	2	10	11	5	28	220
Total	293	45	78	227	643	879



Based on STARLIMS MDHHS BOL Testing Portal

Note: Flu B subtyping will be reported based on MDHHS BOL testing runs (roughly each month) and will be backtracked into this graph

Most recent MDHHS BOL Flu B subtyping run: **April 4, 2019**

Michigan Sentinel Clinical Lab Respiratory Virus Data

Eleven (11) sentinel clinical labs (2SE, 1SW, 7C, 1N) reported during this week

SE Region

- Influenza A: moderate-high; decreasing
- Influenza B: moderate; steady
- Parainfluenza: slightly elevated
- RSV: slightly elevated
- Adenovirus: low
- hMPV: slightly elevated

Central Region

- Influenza A: low-moderate; decreasing
- Influenza B: low-slightly elevated
- Parainfluenza: low
- RSV: low
- Adenovirus: low
- hMPV: low-slightly elevated

SW Region

- Influenza A: moderate; decreasing
- Influenza B: low
- Parainfluenza: low
- RSV: low
- Adenovirus: low
- hMPV: slightly elevated

North Region

- Influenza A: low-slightly elevated; decreasing
- Influenza B: low
- Parainfluenza: no data available
- RSV: sporadic
- Adenovirus: no data available
- hMPV: no data available

There were 5 new respiratory viral outbreaks (2C, 1N, 2SE, 0SW) reported to MDHHS during this time period. Respiratory outbreaks for the 2018-2019 season are listed in the table below.

Facility Type	C	N	SE	SW	Total	2016-2017 Total	2017-2018 Total
Schools: K-12 & College	3	2	3	1	9	25	14
Long-term Care / Assisted Living Facility	16	4	18	13	51	138	238
Healthcare Facility	1	0	0	0	1	23	4
Daycare	0	0	0	0	0	3	4
Homeless Shelter	0	0	1	0	1	1	0
Correctional Facility	2	4	0	1	7	2	10
Other	0	0	0	0	0	3	0
Total	22	10	22	15	69	195	270

Did you know?

Congregate setting outbreaks of viral respiratory illnesses are required to be reported to your local health department? See:

- [Influenza Guidance for Healthcare Providers](#)
- [Guideline for influenza and Respiratory Virus Outbreaks in Long-Term Care Facilities](#)

FluBytes

- [WHO Recommendation Made for H3N2 Virus Vaccine Strain](#)
- [NIH Begins First Human Trials of Potential Universal Flu Vaccine](#)
- [10 Years After the H1N1 Flu Pandemic](#)
- [Increasing Influenza Vaccination in Health Care Workers](#)
- [Flu Vaccine Tied to Lower Mortality in Heart Failure Patients](#)
- [Flu Activity Surveillance Update](#)

MDHHS Contributors

Bureau of Epidemiology and Population Health – S. Bidol, MPH, S. Kim, MPH

Bureau of Family Health Services – M. Doebler, MPH

Bureau of Labs – B. Robeson, MT, V. Vavricka, MS

For questions or to be added to the distribution list, please contact Sue Kim at KimS2@michigan.gov