



Michigan Flu Focus

Weekly Influenza Surveillance Report



Editor: Sue Kim, MPH

Editor Email: KimS2@michigan.gov

June 12, 2020

Vol. 17; No. 33

Week Ending June 6, 2020 | WEEK 23

2019-20 Season Overview

Geographic Spread – [influenza activity levels](#) in Michigan recorded 13 weeks at Widespread activity from week ending Dec. 28, 2019 (Week 52) through week ending Mar. 21, 2020 (Week 12).

Outbreaks – 111 respiratory outbreaks were reported.

Sentinel Provider Surveillance (ILINet) – provisional data shows ILI activity peaked week ending Feb. 8, 2020 (Week 6) at 4.1% and above baseline for 14 weeks.

Laboratory – influenza B (Victoria) viruses were initially predominately reported; however, as the season progressed influenza A (H1N1) viruses were predominantly reported.

Hospitalizations – provisional data shows 969 flu hospitalizations were reported in the catchment area.

Pediatric flu mortality – 5 pediatric influenza (B) deaths have been confirmed by MDHHS.

U.S. Influenza Burden Estimates

The Centers for Disease Control and Prevention (CDC) have released [preliminary burden estimates](#) for the 2019-2020 flu season. Between October 1, 2019 through April 4, 2020 CDC estimates there have been:

- **39 million – 56 million flu illnesses**
- **18 million – 26 million flu medical visits**
- **410,000 – 740,000 flu hospitalizations**
- **24,000 – 62,000 flu deaths**

NOTE: The week ending April 4, 2020 was the last week in-season influenza burden estimates will be provided for the 2019-2020 season.

Flu Bytes

The Advisory Committee on Immunizations Practices will meet on June 24th to vote on and approve the official flu vaccine recommendations for the 2020-2021 flu season. The vote will reinforce the recommendations that all people aged 6 months and older without contraindications should receive an influenza vaccine every year. Additionally, they will officially vote to adopt the flu vaccine virus strains that have been identified by the World Health Organization for the 2020-2021 flu season.

For more information about the ACIP meeting click here: <https://www.cdc.gov/vaccines/acip/meetings/index.html>

Influenza News Blast

- [Universal Flu Vaccine Tracking Effort](#)
- [Abstract: Flu Vaccine Protection Across 3 Seasons](#)
- [NEW STUDY: Expanding Understanding of Flu-related Complications](#)
- [NEW STUDY: Improving Influenza Vaccination in Children with Asthma](#)
- [NEW STUDY: Influenza VE in Children](#)
- [Global Flu Surveillance Update](#)
- [NEW Study: Influenza Vaccine During Pregnancy and 6-month Infant Development](#)
- [Immunization Schedules, 2020](#)

Updates of Interest

Nationally, laboratory-confirmed influenza activity is low. For more information on flu activity in the U.S., please visit: www.cdc.gov/flu/weekly

For information on COVID-19 in Michigan, please visit: www.michigan.gov/coronavirus

Congregate Setting Respiratory Virus Outbreaks

There were 0 new respiratory outbreaks (OC, ON, OSE, OSW) reported to MDHHS during this time period. Respiratory outbreaks for the 2020 summer season are listed in the table below.

of Congregate Setting Outbreaks by Region

Facility Type	C	N	SE	SW	Summer 2020 Total	2019-20 Season Total
Schools: K-12 & College	0	0	0	0	0	17
Long-term Care / Assisted Living Facility	0	0	0	0	0	77
Healthcare Facility	0	0	0	0	0	8
Daycare	0	0	0	0	0	0
Homeless Shelter	0	0	0	0	0	2
Correctional Facility	0	0	0	0	0	7
Other	0	0	0	0	0	0
Total	0	0	0	0	0	
2019-20 Season Total	34	18	22	37		111

Did you know?

Congregate setting outbreaks of viral respiratory illnesses are required to be reported to your local health department? See:

- [Influenza Guidance for Healthcare Providers](#)
- [Guideline for influenza and Respiratory Virus Outbreaks in Long-Term Care Facilities](#)

Novel Influenza A Viruses

No human infections with novel influenza A viruses thus far have been reported for the 2019-2020 season.

U.S. Outpatient Influenza-like Illness Surveillance Network (ILINet)

During the 2019-2020 influenza season, provisional data shows Michigan ILI activity peaked week ending **February 8, 2020** (Week 6) at **4.1%** and reported above baseline for **14** weeks.

Number of Reports and ILI % by Region in Michigan during this time period:

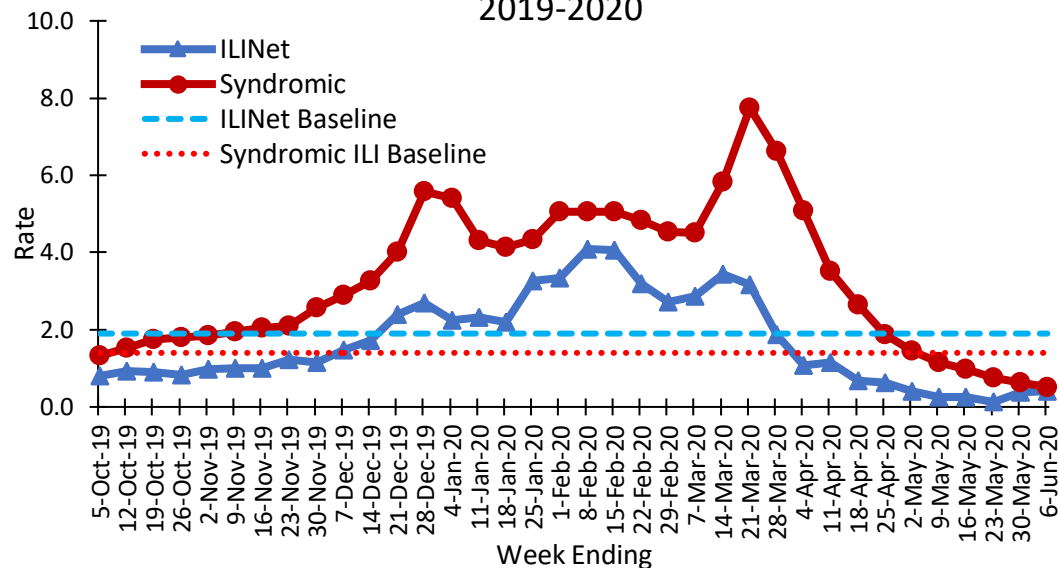
Region	C	N	SE	SW
No. of Reporters Total (21)	6	4	8	3
ILI %	0.7	0.3	0.0	0.1

Data is provisional and may change as additional results are reported.

A total of 28 patient visits due to ILI were reported out of 7,098 office visits during this period.

*Regional baseline is developed by calculating the mean percentage of patient visits for ILI during non-influenza weeks for the previous three seasons and adding two standard deviations

Michigan Statewide ILINet and Syndromic Surveillance, 2019-2020



Become an ILINET provider!

Contact Shelly Doebler at DoeblerM@michigan.gov

MDHHS Laboratory Data

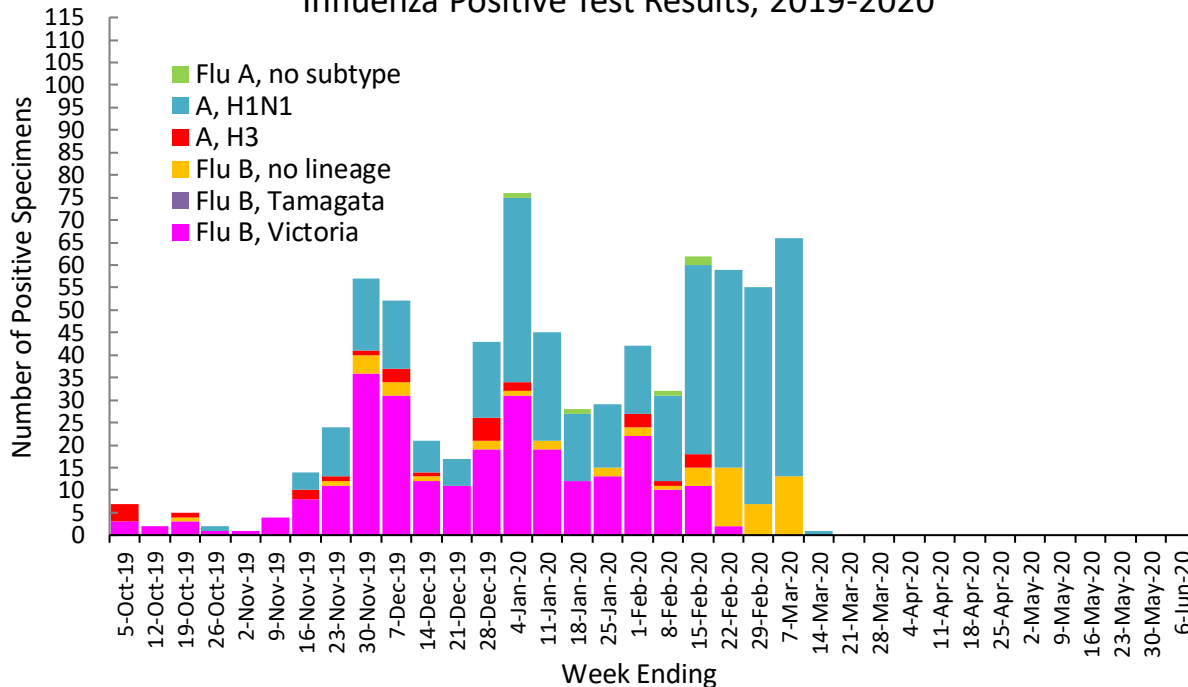
There were **0** new positive influenza results (0C, 0N, 0SE, 0SW) reported by the MDHHS Bureau of Laboratories (BOL) during this time period.

of Positive Respiratory Virus Results by Region

Flu Type, Subtype	C	N	SE	SW	Total	2019-20 Flu Season Total
Flu A, H1N1	0	0	0	0	0	393
Flu A, H3N2	0	0	0	0	0	27
Flu B	0	0	0	0	0	319
Total	0	0	0	0	0	
2019-20 Total	280	41	128	290		739

Data is provisional and may change as additional results are reported.

Influenza Positive Test Results, 2019-2020



Note: Flu B subtyping will be reported based on MDHHS BOL testing runs and will be backtracked into this graph

Michigan Sentinel Clinical Lab Network Respiratory Virus Data

Seven (7) sentinel clinical labs (1SE, 2SW, 3C, 1N) reported during this week

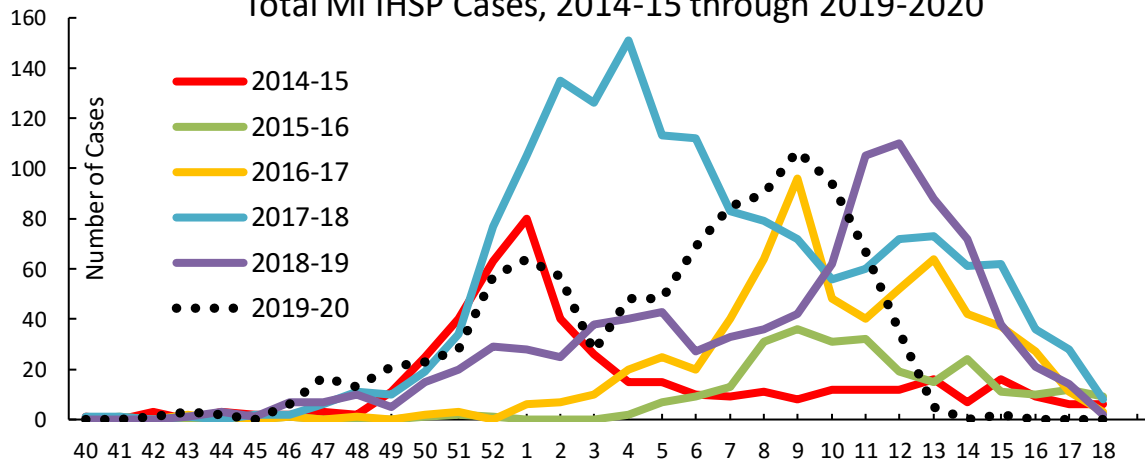
SE Region	
Influenza A:	no activity
Influenza B:	no activity
Parainfluenza:	no data available
RSV:	no activity
Adenovirus:	no data available
hMPV:	no data available
Central Region	
Influenza A:	no activity
Influenza B:	no activity
Parainfluenza:	no activity
RSV:	no activity
Adenovirus:	very low
hMPV:	sporadic
SW Region	
Influenza A:	no activity
Influenza B:	no activity
Parainfluenza:	no activity
RSV:	no activity
Adenovirus:	no activity
hMPV:	no activity
North Region	
Influenza A:	no activity
Influenza B:	no activity
Parainfluenza:	no activity
RSV:	no activity
Adenovirus:	no activity
hMPV:	no activity

Influenza Hospitalization Surveillance Project (IHSP)

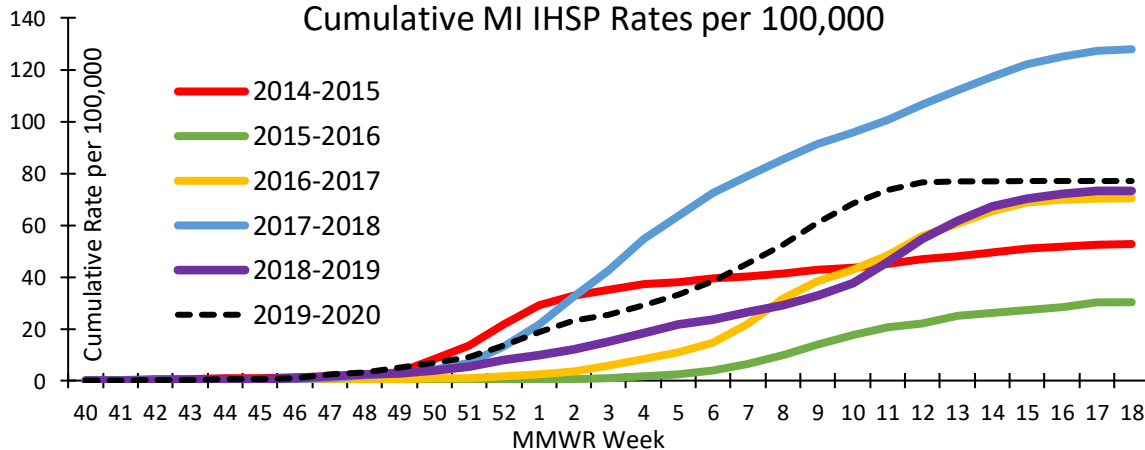
The CDC's Influenza Hospitalization Surveillance Network (FluSurv-NET) provides population-based rates of laboratory-confirmed influenza-associated hospitalizations from October 1st through April 30th each year. Michigan participates as an IHSP state in FluSurv-NET for Clinton, Eaton, Genesee, Ingham, and Washtenaw Counties.

Since October 1st, **969 (150 pediatric, 819 adult)** influenza-related hospitalizations were reported in the catchment area for the 2019-2020 season. Data is preliminary and may be updated as more information becomes available.

Total MI IHSP Cases, 2014-15 through 2019-2020



Cumulative MI IHSP Rates per 100,000



Washtenaw County was added in the 2017-2018 season

Mortality Surveillance

Pneumonia & Influenza (P&I) Mortality Surveillance

Michigan Department of Health and Human Services Vital Records and Health Statistics provides pneumonia & influenza mortality data based on death certificates. Please visit the [Michigan Mortality Statistics](#) webpage for more information.

Influenza-associated Pediatric Mortality

Five (5) pediatric influenza (B) deaths have been confirmed by MDHHS for the 2019-2020 influenza season.

Nationally, 182 influenza-associated pediatric deaths have been reported thus far this season. Total influenza-associated pediatric deaths in the U.S. and Michigan by season are listed in the table below.

	2016-17	2017-18	2018-19	2019-20
U.S. Total <small>Source: CDC FluView</small>	110	188	144	182
MI Total	5	3	3	5

Pediatric deaths due to influenza are required to be reported in Michigan. Please see:

- [Influenza-Related Pediatric Mortality Investigation and Reporting](#)

- [MDHHS Influenza Webpage](#)
- [MDHHS Bureau of Laboratories \(BOL\) Webpage and Test Request Forms](#)
- [CDC FluView Weekly Report](#)
- [CDC Pneumonia and Influenza \(P&I\) Mortality Surveillance](#)
- [CDC Healthcare Professionals Flu Toolkit](#)
- [Immunization Action Coalition: Ask the Experts- Flu](#)
- [MDHHS Influenza Vaccine F.A.Q.](#)

For more information on Coronavirus Disease 2019 (COVID-19) in Michigan, please visit www.michigan.gov/coronavirus

View Michigan Flu Focus Report archives [here](#).

Swine Variant Influenza Toolkit

The Swine Variant Influenza Toolkit will help local health departments in planning for and responding to suspected influenza outbreaks associated with swine at agricultural fairs and exhibits. See:

- [Swine Variant Influenza Toolkit](#)
- [Swine Variant Influenza Toolkit Templates Document](#)

MDHHS Contributors

Bureau of Infectious Disease Prevention

S. Bidol, MPH, M. Doebler, S. Kim, MPH

Bureau of Laboratories

B. Robeson, MT, V. Vavricka, MS

For questions or to be added to the distribution list, please contact Sue Kim at KimS2@michigan.gov