



**MOTHER INFANT
HEALTH & EQUITY
IMPROVEMENT PLAN**

Mother Infant Health and Equity Collaborative (MIHEC) Meeting

August 20, 2020

Announcements and Housekeeping

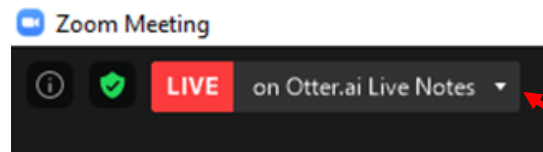
- Attendees are **currently muted** but will be able to unmute to ask questions and share updates at the appropriate points in the meeting.
 - However, the chat function is always available for attendees to share questions or comments.

Announcements and Housekeeping

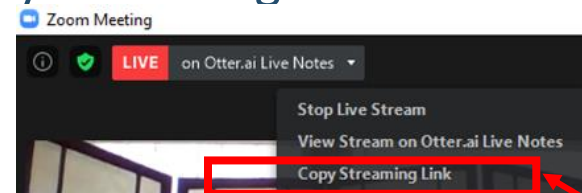
- The meeting is being recorded.
 - Attendees will be able to access the meeting for up to one year utilizing the link that will be provided
- Please add your **name, organization and email address** to the chat box. This will help us to see who is in attendance today.

Announcements and Housekeeping

- Closed captioning is available through **Otter.ai Live Notes**



- From the drop-down menu, select 'copy streaming link'



- Open the Google Chrome browser and paste the link. Hit 'enter'
 - This will open Otter.ai Live Notes

Agenda

- Welcome
- Implicit Bias in Messaging
- The Total Care Project
- Legislative Update
- Maternal and Infant Health Partner Sharing
- MDHHS Update and Meeting Closure





Welcome

Dr. Sonia Hassan

COVID-19 in Pregnancy and the Newborn: State of Michigan Collaborative

Sonia S. Hassan, MD

Associate Vice-President

Office of Women's Health

Wayne State University

Professor, Department of Obstetrics and Gynecology



**WAYNE STATE
UNIVERSITY**

COVID-19 in the State of Michigan

94,278

Total Confirmed
Cases

6,349

Total COVID-19
Deaths

100,000 pregnancies per year in Michigan



About the *COVID-19 in Pregnancy* *Statewide Collaborative*

- **Aim 1: Determine whether COVID-19 infection is associated with adverse perinatal outcomes**
- **Aim 2: Determine the frequency of adverse outcomes in pregnancies of symptom positive and molecular laboratory test negative or equivocal for COVID-19 infected patients**

About the *COVID-19 in Pregnancy* *Statewide Collaborative*

- **Aim 3: Determine the pregnancy outcomes in patients with COVID-19 in the state of Michigan**
- **Aim 4: Determine which treatment plans and protocols are specific for the needs of pregnant women in Michigan**

Data Information Collected

- Maternal obstetric, demographic and medical history
- Maternal medical complications
- Pregnancy and newborn outcomes
- Placental histology

Statewide Principal Investigators

- Ray Bahado-Singh, MD
- David Bryant, MD
- Chaur Dong-Hsu, MD, MPH
- Pooja Green, MD
- Sonia Hassan, MD
- Theodore Jones, MD
- Madhurima Keerthy, MD
- Paige Paladino, DO
- Robert Sokol, MD
- Lisa Thiel, DO, FACOOG
- Courtney Townsel, MD, MSc
- Shyla Vengalil, MD
- Robert A. Welch, MD, MSA, FACOG



Statewide Institutions

Beaumont



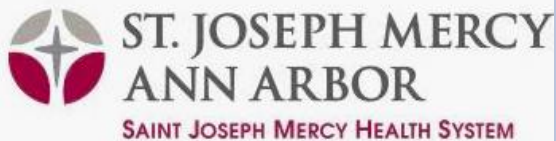
MICHIGAN STATE
UNIVERSITY

DMC

DETROIT MEDICAL CENTER



WAYNE STATE
UNIVERSITY



Contact Information

- Coordinating Center Contact
- Email: shassan@med.wayne.edu





Implicit Bias in Messaging

Yesenia Murillo



Implicit Bias in Messaging

YESENIA MURILLO
EQUITY AND CULTURAL COMPETENCY TRAINING COORDINATOR

DIVISION OF MATERNAL INFANT HEALTH
AUGUST 20TH, 2020

Office of Equity and Minority Health

- **Mission**
- **PA 653 Minority Health Bill**
- **Populations served:**
 - African American
 - American Indian and Alaskan Native
 - Arab Ancestry/Chaldean
 - Asian and Pacific Islander
 - Hispanic/Latino



Guidelines for Communication

- ✓ Practice “both/and” thinking
- ✓ Focus on understanding vs. agreeing or disagreeing
- ✓ Try on
- ✓ Notice intent and impact
- ✓ Lean in and Lean out



Source: Laurin Mayeno and Elena Featherston, 2006
Adapted from VISIONS, Inc.

Are you biased?



Shared Language

Schemas

- [Neuroscience](#)
Help us organize information into broader categories and conserve mental resources
- [Social](#)
They exist in and our shaped by our environment



john a powell. The HASS Institute, UC Berkeley.

Shared Language

Implicit Bias

A tendency or inclination in our outlook that results in judgment (in favor or against) without question. No consideration for alternative points of view.

Implicit Bias	Explicit Bias
Person doesn't perceive or consciously endorse evaluation	Person is aware of his/her evaluation
Expressed indirectly: e.g., sitting further away from a Latino than a White individual.	Expressed directly/explicitly: e.g., "I like Whites more than Latinx."



Daniel Kahneman, Thinking Fast and Slow (FSG, NY:2001)

Implicit Bias Contributions to Disparities:

Mental health services: Both US and UK psychiatrists are **more likely to prescribe antipsychotic medications to non-Whites and to be involuntarily hospitalized and placed in seclusion once hospitalized.**

Child Welfare AND AT-RISK YOUTHS: African American children, Hispanic and American Indian children are **overrepresented in child abuse and neglect reports.**

JUVENILE CRIMINAL JUSTICE: In regard to every offense category, **Black youth are more likely than White youths to be incarcerated.** Among those charged with drug offenses, **Black youths are 48 times more likely than White youths to be sentenced to juvenile prison.**

Implications for Infant Mortality in MI

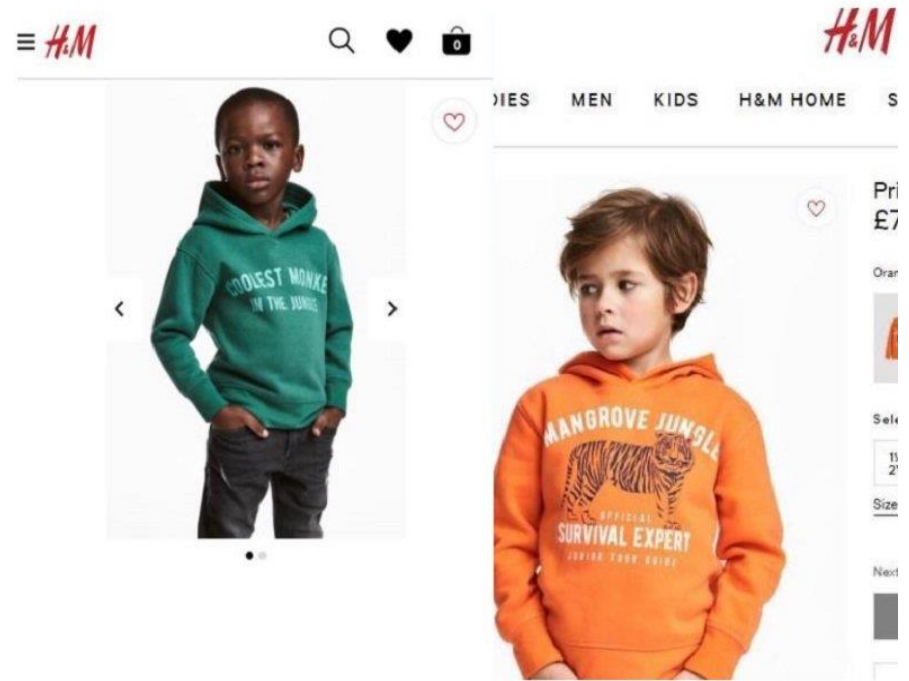


- Sleep related infant death is a leading cause of death among infants less than 1 year. **5 in 8 infants died before the age of 4 months**
- The rate of death from sleep-related causes among **Black infants** is more than **3 times higher** than that for White infants

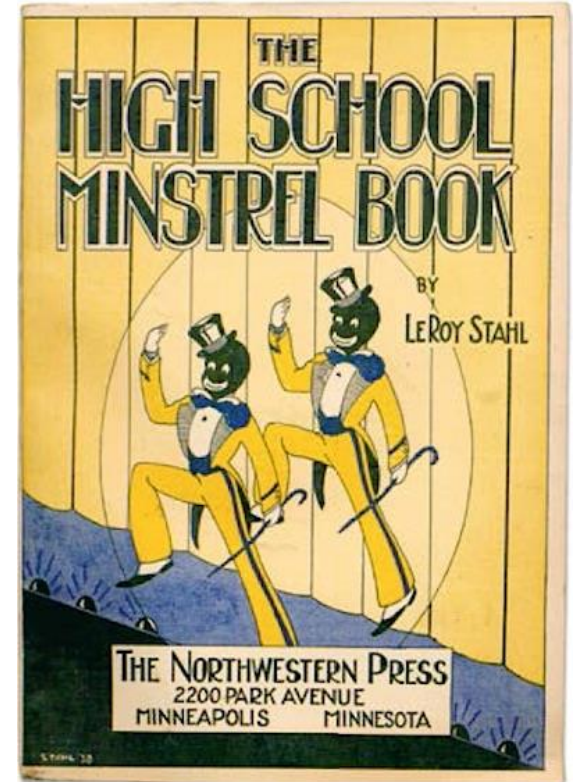
Implicit Bias in Messaging



Implicit Bias in Messaging



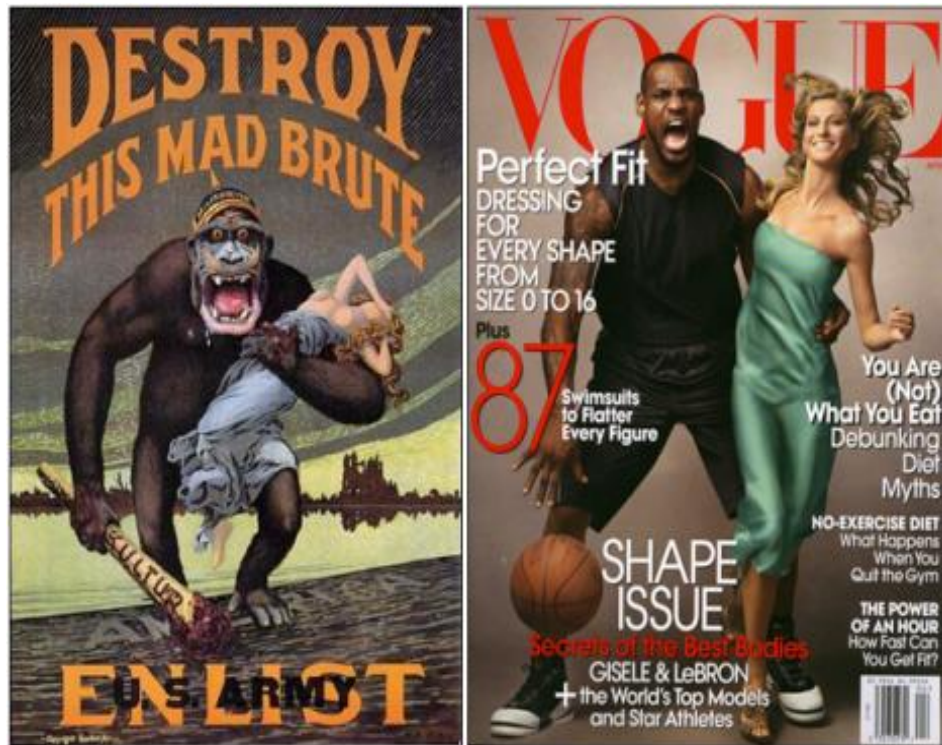
Implicit Bias in Messaging



Implicit Bias in Messaging



Implicit Bias in Messaging





Practices for Reducing and Mitigating Bias

1. Stereotype Replacement & Counter-stereotypic messages.
2. Priming
3. Engage in positive and meaningful interactions with members of other racial/ethnic groups
4. Flip the Goal



1. Stereotype Replacement Counter-Message/Imaging





Stereotype replacement
Counter-Message/Imaging

2. Priming

**Fill in the
missing word**

1. Red
2. Blue
3. Orange
4. Yellow
5. Gr _ _ _

**Now fill in the
missing word**

1. Plum
2. Nectarine
3. Pear
4. Apple
5. Gr _ _ _

3. Engage in Meaningful Inter-group Interactions



4. Flip the Goal



Flip It To Test It

How to mentally flip your stereotypes about people to test your biases.

VIGNETTE 1 – Expectations of Men and Women

Women

Leader
Strong

Provider
Driven

Assertive

Men

Supportive
Sensitive

Emotional
Fragile

Helpful

VIGNETTE 2 – Quotes from Twitter account that flips the gender



Police Officer

"Being called a Policewoman doesn't bother me at all, because I know it covers both women and men." Andrew, Policewoman, age 40."

Sport Teams

Cleveland Indians →
Cleveland Caucasians



Adopted from Kristen Pressner, TEDxBasel, 2016
Yesenia Murillo, Michigan Department of Health and Human Services, 2018

Extra: Equitable Community Engagement

COMMUNITY OUTREACH

Reach out



Self-interest: conduct qualitative study, gather information and leave



Temporary relationship



Extend assistance or services



One-way approach



We design programs, policies, processes, law, etc.



COMMUNITY ENGAGEMENT

Work collaboratively

Reciprocal transfer of knowledge and skills among all collaborators and partners

Ongoing relationship

Address issues affecting well-being

Two-way approach

Community members are full partners in decision making

Call to Action

Using an implicit bias lens

1. How do you experience it in self?
2. How does it show up in your work?
3. How does it impact the people you/we serve?





The Total Care Project

Bianca Nash-Miot



Legislative Update

Amy Zaagman

MIHEC Meeting Evaluation

If you have any suggestions of topics or presentations for upcoming MIHEC meetings, please enter them in the chat box or send in an email to Emily at GoergeE@michigan.gov



Maternal and Infant Health Partner Sharing

REMINDER!!

- You will need to unmute yourself to share any announcements, questions or comments
 - You are also welcome to email any information to Emily (GoergeE@Michigan.gov) to include in the post-meeting notes

MDHHS/DMIH Updates

- **Maternal Infant Health Summit**

- Virtually on September 22 & 23, 2020
- Still time to register at: www.mihealthsummit.com

- **November MIHEC Meeting**

- Virtually on November 12, 2020 at 1pm
- Register via MIHEC tab on www.Michigan.gov/MIHEIP

- **SAVE THE DATE! 2021 Maternal Infant Health Summit**

- June 28 & 29, 2021 at the Lansing Center
- Will have a virtual option

- CDC's HEAR HER Campaign

- www.cdc.gov/hearher

About the Campaign

Overview of CDC's Hear Her campaign.

Urgent Maternal Warning Signs

Know the urgent maternal warning signs and symptoms during pregnancy and up to a year after giving birth.

Pregnancy-Related Deaths in the United States

Information and data on pregnancy-related deaths in the United States.

Campaign Resources

Download videos, social media content and images, and more.

Hear Personal Stories of Pregnancy-Related Complications

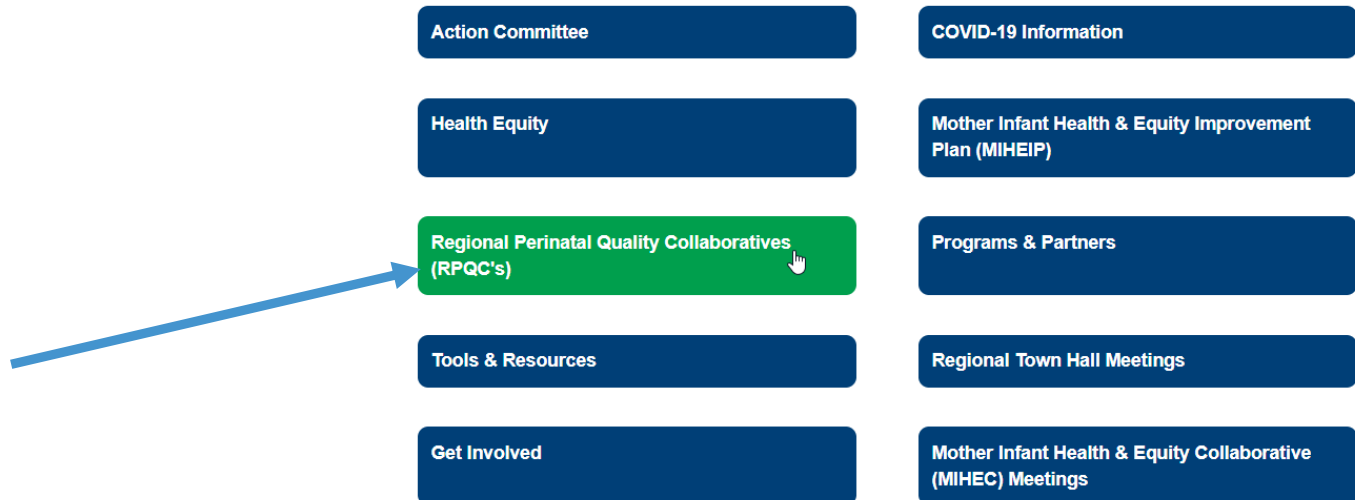


- MDHHS Division of Maternal Infant Health Webpage

- www.Michigan.gov/MIHEIP

Regional Perinatal Quality Collaborative Updates

- Please see www.Michigan.gov/MIHEIP for the posted updates from Regions 1 and 2&3
- These updates will be found under the RPQC page within their respective Region's 'tab'



**Save
the
Date**

2020 MIHEC Schedule

Registration is required

November 12, 2020 –Virtual

Maternal Infant Health Summit

Will be by virtual access on September 22 & 23, 2020

Visit <https://mihealthsummit.com/> to register



**MOTHER INFANT
HEALTH & EQUITY
IMPROVEMENT PLAN**

2020-2023

TOGETHER, SAVING LIVES

A photograph of a woman in profile holding a baby. The woman is looking down at the baby with a gentle expression. The baby is looking up at the woman. The background is bright and slightly blurred. There are several decorative squares in dark blue and teal colors scattered around the image: one in the top left, one in the top center, one in the top right, one in the middle right, one in the bottom left, one in the bottom center, and one in the bottom right.

Thank You!

Michigan.gov/MIHEIP