



MICHIGAN

WIC NEWS

Inside This Issue

LA Highlights 2-3
 MWA Update 4
 MDHHS Oral Health 4
 E-Notice Recap 4-5
 Nutrition/CCS Section 6
 Breastfeeding Section 7
 Upcoming Events 8

Special Supplemental Nutrition Program
 for Women, Infants, and Children

Sept/Oct 2017

This edition of the WIC News... has so many highlights of Local Agencies and the exceptional things they are doing. It's exciting to see the great ideas and activities all the WIC staff are putting forth for their clients and their communities. Thank you for all you do for WIC!

2017 Michigan WIC Coordinator Summit -Crystal Mountain
October 24th and 25th

Registration is now open for the 2017 Michigan WIC Coordinator Summit on October 24-25, 2017 at Crystal Mountain, 12500 Crystal Mountain Drive, Thompsonville, MI 49683. Please visit the MPHI website under WIC trainings, or click on the link below to register for the training.

<https://events.mphi.org/wic-coordinator-summit/>

Overnight Lodging:

Once you have completed your conference registration through MPHI, a room will automatically be reserved for you. You will receive a confirmation email for your room reservation 7-10 days after your conference registration has been completed. Once you arrive at the hotel, the hotel staff will require a credit card number (this will be for incidentals only). Please register for the conference no later than September 22nd. Please note, there are no elevators at this hotel.



If you have any questions regarding your conference or hotel reservations, or your local agency will require more than one room (medical issues, breastfeeding mom, etc.) please contact Anissa Damon at adamon@mphi.org.



St. Clair County WIC staff at their annual Breastfeeding Stroll in Port Huron

Local Agency Highlights



The Success of Teamwork:
 Coming together is the beginning.
 Keeping together is progress.
 Working together is success.
 -Henry Ford



At ACC WIC we love making our dads feel special- especially on Father's Day! This year we purchased "World's Best Dad" Ribbons and gave them to every Father. We want our dads to know that they are always welcome to bring their kids to their WIC appointments!

We at DHD#10 began using the certificate, to the right, at the end of May. We created them as a result of the presentation about dad involvement at the State WIC conference. I have personally given them to dads that are present at the appointment, as well as other staff. The responses from dads have been overwhelming, such as "WOW!"; "Thank you so much"; "This is awesome, I had such a bad night at work and you just made my day."

Thank you for being the


World's Greatest Dad!

We congratulate you on being a supportive dad! Your positive involvement makes a huge difference in the lives of your family.

Greatest Dad Award presented to:

Name _____ Date _____

Presenter _____



District Health Department #10
 This institution is an equal opportunity provider.

At first, we were only going to do it for the month of June, for Fathers' Day, but staff decided we will keep this effort going. -M. Smith



On July 23rd, Community First Health Center's WIC Program helped to celebrate the New Baltimore Farmer's Market's 10th birthday, by offering Project FRESH at the market. Staff and clients were at the market bright and early on Sunday morning to celebrate with balloons, a clown, music and cupcakes. We offered a Breastfeeding Suite/changing station for families, along with Project FRESH incentives. The WIC team issued over \$1,000 in benefits despite a power outage mid-morning. WIC participants were excited to use their benefits at the market and the Market Master even stopped in for a visit. We are planning to make this an annual event.





ACC WIC partners with Growtown and Penrose Marketplace once a week in the summer to offer WIC participants access to a farm stand, where produce is grown on site. Clients are able to view the land where the produce is grown and then pick up and use their Project FRESH coupons all at the same location. This one-stop-shop style of Project FRESH, in particular, benefits those who struggle with transportation to other farmers' markets in the Detroit area.



PRWG St. Clair County WIC. Picture is in front of the clinic



Shout Outs!

Retirements

Jerilyn "Jeri" Fosbender, has been with Branch-Hillsdale-St. Joseph Community Health Agency at the Hillsdale office for 29 years. She intends to retire August 18, 2017 to spend quality time with her husband, family, and grandchildren. She is also looking forward to camping and relaxing in her next chapter of life. We all wish her well.



Ingham County WIC celebrates the career of WIC Outreach Advocate Peggy Albrecht. Peggy came to the WIC Program after six years as a Family Outreach Advocate with Ingham County. She has been with WIC for nearly seven years. Peggy will be hanging up her WIC hat as she sails into retirement on September 8, 2017. Peggy has been an exceptional team player, always pitching in wherever needed and always being flexible when schedules or plans change. Peggy has always been willing to give up her evenings and weekends to attend health fairs and other outreach events in order to get the word out about the WIC program or reconnect past clients with current WIC services. She is also known in our office as our organizing guru due to her amazing ability to whip an office or storage room into shape in no time! We at Ingham County Health Department WIC will miss her greatly but wish her nothing but the best, and endless time on sandy beaches in the future!



Employee Recognition

Liz Steckel has been nominated for the Employee Recognition Award with the State Agency WIC Office. Liz was nominated by a coworker who has appreciated her upbeat and diligent work ethic.

WIC is proud to recognize Liz in her tremendous efforts she puts forth in the WIC clinic every day, including her positive attitude that her coworkers see. We are thrilled to hear about all the great things she is doing professionally with helping the clinic in outreach efforts, having excellent MI-WIC knowledge, displaying teamwork, troubleshooting various issues, and most importantly helping clients in any way that she can.

Thank you Liz for helping support the WIC community!



MWA Announcement

Happy summer from the MWA Executive Board! We have been busy the last few months and will be finalizing the MWA Bi-Laws in addition to planning an activity for the Fall WIC Coordinator Summit.

As a follow-up and reminder from the May/June MWA update, the goals of MWA are:

- provide a statewide resource network and collaborative that promotes communication and guidance on Michigan WIC policies
- advocate for changes and improvements to the Michigan WIC Program in cooperation with MDHHS WIC
- cooperate with MDHHS WIC to provide local agencies and staff with professional development opportunities and trainings

We would love to hear from you regarding topics/policies of interest for future advocacy efforts. Please e-mail any thoughts or ideas to our MWA President Dr. Velonda Anderson at andersonve@detroitmi.gov. Additionally, we would like to fill the vacant position of Region 1 Representative on the MWA Executive Board. If you are interested, please e-mail Velonda. Thanks and enjoy the rest of your summer!

MWA Executive Board

Chair	Velonda Anderson	Region 1	VACANT
Chair Elect	Becky Ginbey	Region 2	Ann Bianchi
Secretary	Tracie Bolton	Region 3	Kate White
Treasurer	Lynn Kuligowski	Region 4	Martha Brooks

MDHHS Oral Health Program

Did you know that all pregnant women should have a dental check-up while pregnant and that treatment for dental disease is safe for all stages of pregnancy? Please encourage your pregnant moms to schedule a dental appointment today and view the new WIC Health module on wichealth.org: “Give You and Your Baby a Lifetime of Healthy Teeth.”



Did you also know that infants should have their first dental visit by age one? The American Academy of Pediatrics and the American Academy of Pediatric Dentistry both recommend this as a prevention strategy to reduce Early Childhood Caries, which by definition, includes any sign of tooth decay in children under age 6 years old. WIC staff can help encourage parents by addressing oral health and nutritional needs at the same time!



The Michigan Department of Health and Human Services Oral Health Unit has a unique program that offers free fluoride varnish to medical providers who will apply fluoride varnish on children under 3 called Varnish! Michigan-Babies Too! We have several WIC clinics who participate in this program. To learn more contact: demings@michigan.gov

State Updates– E-Notice Recap

#2017-80: AIM Immunization Punch Cards

In an ongoing effort to increase childhood immunization rates in Michigan and protect more children from serious vaccine-preventable diseases, the Alliance for Immunization in Michigan (AIM), Michigan’s state immunization coalition, graciously funded a new immunization educational tool for parents of young children aged birth through 18 months. The immunization punch card is a tool to remind parents when their child is due for routinely recommended immunizations in the first 18 months of life, beginning with the birth dose of Hepatitis B vaccine. ***Refer to E-Notice for the immunization punch card ordering information***

#2017-82: Risk Code 135 Slowed/Faltering Growth Pattern

One of the changes that was implemented with the May 11, 2017 MI-WIC Release was a change in the title and definition of Risk Code 135 Inadequate Growth. Previously the risk was assigned to the infant and child categories. The risk is now titled Slowed/Faltering Growth Pattern and only applies to Infants ≤ 6 months of age. The definition has been changed to:

Age	Cut-Off Value
Infants Birth to 2 Weeks	Excessive weight loss after birth, defined as $\geq 7\%$ birth weight.
Infants 2 weeks to 6 Months of Age	Any weight loss. Use two separate weight measurements taken at least eight weeks apart.

Once this risk is assigned, it will remain on the Nutrition and Health Summary screen as “Current” until the end of the infant’s certification period. If a category change occurs during the infant’s certification period it will be found in History.

Concerns have been raised regarding children who were once assigned this risk, as it no longer shows up on the Nutrition and Health Summary screen. To determine if a child in your agency was previously assigned Risk 135, a Predefined Report can be generated using 13501 as the risk code and checking all C1-C4 boxes for the WIC Client Category.

Going forward, if after a complete assessment, you determine that a child has inadequate growth concerns, you can designate the client High Risk and follow up appropriately.

#2017-85: 2018 WIC Training and Educational Conference Contract

State of Michigan policy requires WIC to competitively bid the host venue at which the annual WIC Training & Education conference is held. In collaboration with MPH, a request for proposal (RFP) was sought with potential conference locations capable of hosting a conference our size for 2018. As a result of this RFP, the contract has been awarded to the Grand Traverse Resort in Acme, MI. The conference dates will be May 15-16, 2018.

State Updates– E-Notice Recap



#2017-86: New Income Guidelines Effective June 22, 2017

The Income Guidelines Policy 2.05 was recently revised and approved by USDA. This policy has an effective date of June 22, 2017 and can be found on the Michigan Department of Health and Human Services WIC website, www.michigan.gov/wic, under the Policy Manual. The revised guidelines have been successfully implemented in MI-WIC, also effective June 22nd.

The “Income Guidelines” flyer (DCH-0322) has been translated into Spanish and Arabic and is currently in the printing process. Once available, the updated flyer can be ordered via E-forms.

#2017-87: BE Food Package Update

Within the E-Notice there is important information regarding a food package update. Please share this information with all CPAs responsible for assigning food packages and all staff responsible for issuing benefits and reviewing client Shopping Lists, to ensure clients continue to receive appropriate quantities of supplemental foods.

#2017-93: Issue with MI-WIC Growth Charts Printing from Internet Explorer

*****Please refer to E-Notice for additional information*****

#2017-97: MFA for MILogin Update Profile

As of July 25th, 3rd Party MILogin users and external Workers (Worker users accessing the application from outside the State network) will be required to use Multi-Factor Authentication (MFA) when updating their ‘**USER PROFILE.**’ These users will be prompted to perform MFA when they plan to make any change in their MILogin profile. This will be applicable only for those users who access MFA protected applications in MILogin such as MI-WIC.

At this time, it is important to ensure that the profiles are up to date in MILogin to ensure users receive emails or text messages correctly during MFA. Please see E-Notice for screen shots that provide more information regarding this change.

#2017-98: Similac PM 60/40 Food Packages

Please share this information with all CPAs responsible for assigning food packages. In order to facilitate the assignment of Similac PM 60/40 packages, the full complement of IBP and IFF food packages containing this formula have been created for clients for whom the medical providers have requested this special formula. There is no need to re-assign current food packages for client’s receiving this formula in their food package. However, for your convenience please utilize these packages when assigning Similac PM 60/40 in the future. *****Refer to E-Notice for examples of assigned IBP and IFF Similac PM 60/40 packages*****

#2017-100: Compatibility Issues with E-Forms

Below will provide a short term solution to the compatibility issue experienced while using MI-WIC and E-Forms on the same computer with Internet Explorer.

Issue:
Accessing both MI-WIC and E-Forms on the same computer with Internet Explorer (IE). When run in the IE browser, MI-WIC should not be running under “compatibility mode,” whereas for E-forms, the compatibility setting is a must. So, user needs to change the ‘Compatibility Setting’ every time they switch between MI-WIC & E-Forms.

Short Term Solutions:

Use Internet Explorer (IE) for MI-WIC and use Google Chrome for E-Forms – then the need to change the IE settings back and forth is eliminated.

Use Google Chrome for both MI-WIC and E-forms.

Long Term Solution:

To develop and implement E-Forms in MI-WIC.

If you have any questions, please contact Bagya Kodur at KodurB@Michigan.gov.

#2017-107: 2017/2018 WIC Training and Events Calendar

The 2017/2018 Training and Events Calendar is posted on the WIC website.

Go to www.michigan.gov/wic - WIC Providers / 2017/2018 Training and Events Calendar.

Also posted is a 2017/2018 WIC Trainings and Events by Category.

Go to: www.michigan.gov/wic - WIC Providers / 2017/2018 Training and Events by Category.

The training calendars provide information regarding trainings, workgroups and webcasts. We highly recommend sending new and current staff to WIC trainings.

Please share with your local agency staff - we hope to see you and your staff participating this year!

#2017-108: Nutrition Education Newsletters: Eat Safe Fish and wichealth.org

Attached to the E-Notice is the electronic copy of the Eat Safe Fish Summer Newsletter and the wichealth.org, July 2017 Newsletter. Please share relevant information with your WIC staff.

Please Note:

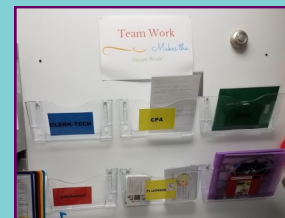
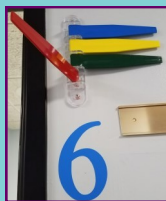
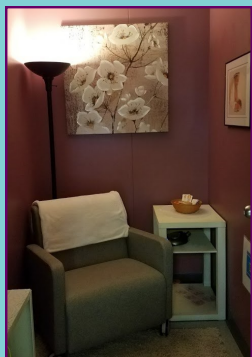
- With fish season in full swing, just a reminder about the **Eat Safe Fish webinar** available on their website. 1 credit of CEUs is available to dietitians and nurses for viewing.
- wichealth.org is looking for volunteers for a **Spanish Review Committee**. If you or your staff are bilingual, this is a great volunteer opportunity to strengthen available NE resources for our Spanish-speaking clients.
- **New wichealth.org Lesson Coming Soon: Help Your Baby Sleep Safe and Sound**

This lesson is currently under review by State staff and should be available to clients soon (will announce by E-Notice when live).

LOCAL AGENCY TOUR

ST. CLAIR COUNTY HEALTH DEPARTMENT, PORT HURON, MI

WIC participants sign-in and remain in the waiting room until called by a WIC Clerk into the clerical office. Once seated in the confidential clerical cubicle, the client provides eligibility information, and then returned to the waiting room. The client's routing slip, MCIR, and any other pertinent information is then conveyed by the WIC Clerk to the color coded service board in the "professional pod" (a room with 7 workstations for CPAs, RDs, clerk techs and Immunization "float" RNs). The routing paperwork is placed in the blue, clerk- tech bin (see pictures below) and clerk-tech takes it along with a portable cart and laptop (requires WIFI) to an open clinic room and "flies" the blue and the green flag out into the hallway, designating the two professionals using that room are the clerk-tech and the Imms RN. The clerk-tech calls the client into the room and provides all the lab and anthro work, while the Imms RN assesses the immunization status. Once the client is called into the clinic room, they remain in the room where all professional staff service them, returning the routing slip to the service board after each visit so the next professional can pick it up and access the clinic room appropriately. Once all the flags on the door have been moved from the door opening to the wall side (denoting all professional staff have been in and out of the room), the client is ready for discharge. The last professional to see the client brings the paperwork back to the clerical office where a WIC clerk then loads the benefits, prints the discharge paperwork, and walks to the clinic room to discharge the client.



The people who make a difference are not the ones with the credentials, but the ones with the concern. –Max Lucado

CCS Logo Contest



It's time for Michigan WIC to design a logo that captures the hard work, daily effort, and strong commitment of our staff when providing clients with the best service possible. We follow several other states who have a logo uniting their efforts around providing client centered care to their clients, all including some version of connecting, caring, listening, and placing the client at the center of it all. Now, it's our turn to create a fun, engaging, and inspiring logo to sum up our efforts.

We welcome creative ideas from any WIC staff statewide!

Key Dates:

- Initial Design Due Date: October 16, 2017. Send to Tara Fischer at fischert@michigan.gov
- Vote #1: WIC Coordinator Summit (October)
- Vote #2: All Staff (November)
- Final Reveal: January 2018

Current CCS Logo



Other States CCS Logos



What will you win?

A whole set of Garden Heroes!



Oregon WIC Listens

Breastfeeding Update

WIC E-Notice #2017-110: 2012 Certified Lactation Specialist (CLS) Recertification Options

Lactation Education Consultants (LEC) now offers Certified Lactation Specialist recertification options for those who earned the CLS credential starting with 2012. The CLS certification is good for five (5) years. For those who took the course in 2012, the credential will expire as of 12/31/17. However, you can recertify via a variety of options. Please share this information with your WIC staff (CPAs and R.D.s)

2012 Recertification Options:

- Certify as an IBCLC
- Acquire 25 CERPS (Lactation - L and/or Ethics – E)
- Retake the CLS Course
- Take the Home Recertification Exam

Please go to the LEC website for details: <http://lactationeducationconsultants.com/cls-recert.shtml>

This link will also give you access to the full LEC website.

CLS Training 2018

The Certified Lactation Specialist (CLS) Course will be offered (April 16-20, 2018 in Lansing), pending a USDA grant. More information will be available in January. This intensive breastfeeding management course is limited to WIC CPA staff who do not already have the CLS, CLC or IBCLC credential. Those who took UCLA's CLE course (1999, 2000) are eligible to attend.

LA Update

District Health Department No. 4 Initiates Local Breastfeeding Coalition

District Health Department No. 4 (DHD#4) joined forces with the MidMichigan Medical Center of Alpena and the Alpena Breastfeeds Facebook group to create the Sunrise Side Breastfeeding Coalition (SSBFC). Two years of work came to fruition when a meeting with the Michigan Breastfeeding Network (MIBFN) was held at the MidMichigan Medical Center. This provided an opportunity for the local breastfeeding leaders to receive guidance from MIBFN's, Shannon McKinney and Millie Pruchnic. It solidified the local's vision and marked the birth of the SSBFC.

Sunrise Side Breastfeeding Coalition is not limited to Alpena County; the coalition serves the surrounding counties as well. SSBFC believes "It is important for breastmilk feeding families outside of Alpena County to know there is support in their area and we are here to support and advocate for them." SSBFC's goal is to normalize breastfeeding in public and within the workplace through advocacy and collaboration with health care facilities and employers.

DHD#4, the MidMichigan Medical Center of Alpena and the Alpena Breastfeeds Facebook Group is looking forward to the continued growth and change that the SSBFC will bring to breastmilk feeding families. Though early in its development, the coalition has exciting plans for the future of Northeastern Michigan's families.



From left to right: Mary Donakowski RN, CLS, Jessica Donakowski Breastfeeding Peer Counselor, and Karen Nowicki-Compeau RN, BSN, CLS, Personal Health Director.

If you, or someone you know, is interested in contacting Sunrise Side Breastfeeding Coalition, please call (989) 356-7388 or email sunriseside.bfc@gmail.com.

The WIC Program of DHD#4 has a breastfeeding Peer Counselor, Jessica Donakowski, who works individually with each mom to create a breastfeeding plan unique to mom's lifestyle. Jessica's passion for breastfeeding normalization is seen in her advocacy for working mothers. Upon request, Jessica will call the client's employer to educate him or her about the Federal breastfeeding law, which includes providing a clean, private place and time for breastfeeding moms to pump. With Jessica's help, and that of Karen Nowicki-Campeau, RN, CLS and Mary Donakowski, RN, CLS, DHD#4's WIC Program has increased its breastfeeding initiation rate ten percent (10%) in the past year.

The future is bright for breastmilk feeding families in Alpena and the surrounding counties!

Michigan Department of Health and
Human Services, WIC Division
Lewis Cass Building
320 S. Walnut St.
Lansing, MI 48913

Questions/Comments
E-mail: lavertys1@michigan.gov



PLEASE
PLACE
STAMP
HERE

UPCOMING EVENTS/TRAININGS/WORK GROUPS

September

12-13 Breastfeeding Basics-Ann Arbor
19 Lab- Port Huron
20 Anthro-Port Huron
21 Nutrition Education Work Group- Okemos
21 Income Webcast
22 Promotion and Retention Work Group- Marquette
26 Lab-Lansing
27 Anthro-Lansing
28 Adv CPA- Mackinaw City

October

4-5 Clerical- Battle Creek
10-11 Breastfeeding Basics- Lansing
18 Anthro-Big Rapids
18 Breastfeeding Work Group
23 Record Review-Thompsonville
24-25 Coordinator Summit- Thompsonville

November

7 Anthro- Battle Creek
8 Lab- Battle Creek
9 Webast- Topic TBD
14-15 CPA- Mount Clemens
17 Promotion and Retention Work Group- Midland

Visit MPHI's website at
events.mphi.org
to sign up for
trainings!

EMPLOYEE RECOGNITION NOMINATIONS

Have someone in your office that really needs some recognition? A coworker that goes above and beyond to make the office better for everyone, including clients? Want to nominate them to be featured in the WIC News, receive a letter from WIC's Director, Stan Bien, and a letter to your WIC Coordinator? Email Stacey @ lavertys1@michigan.gov for more information.