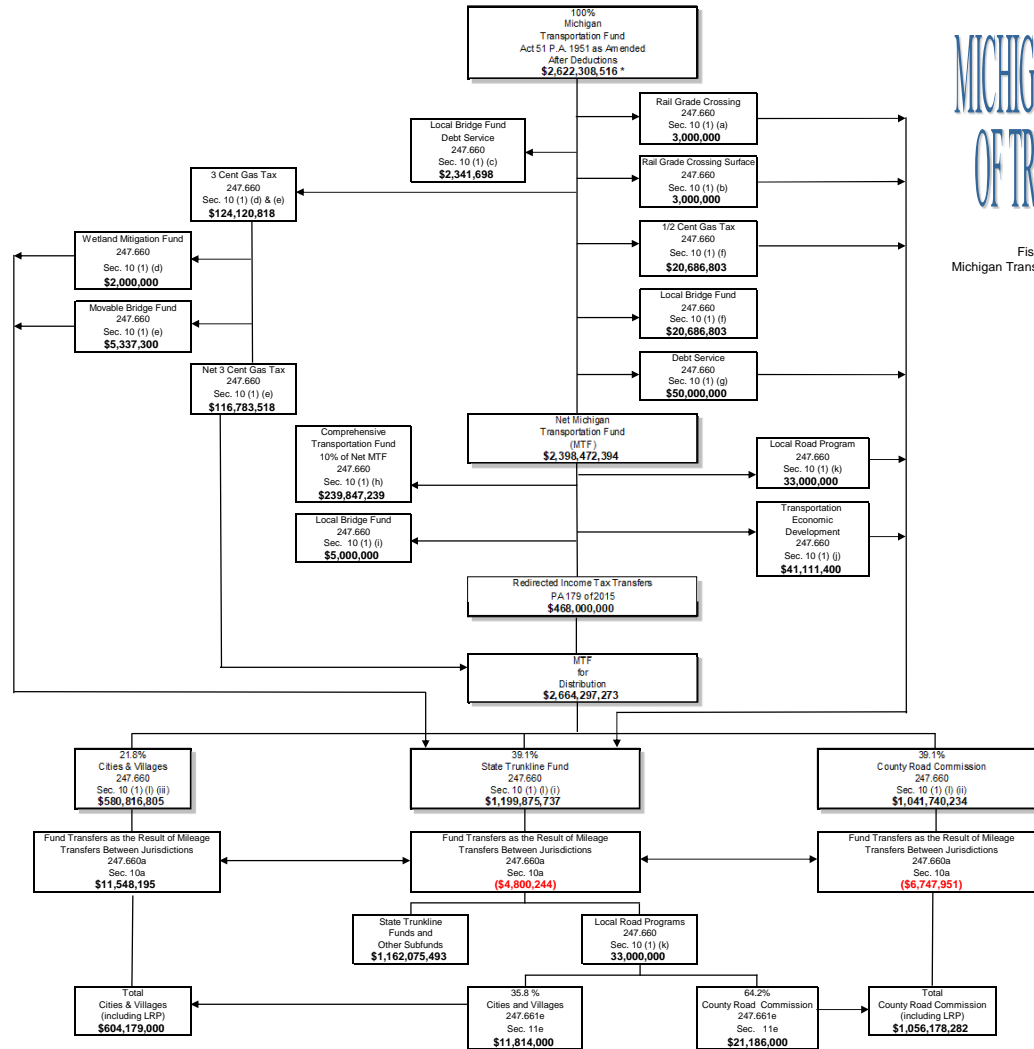
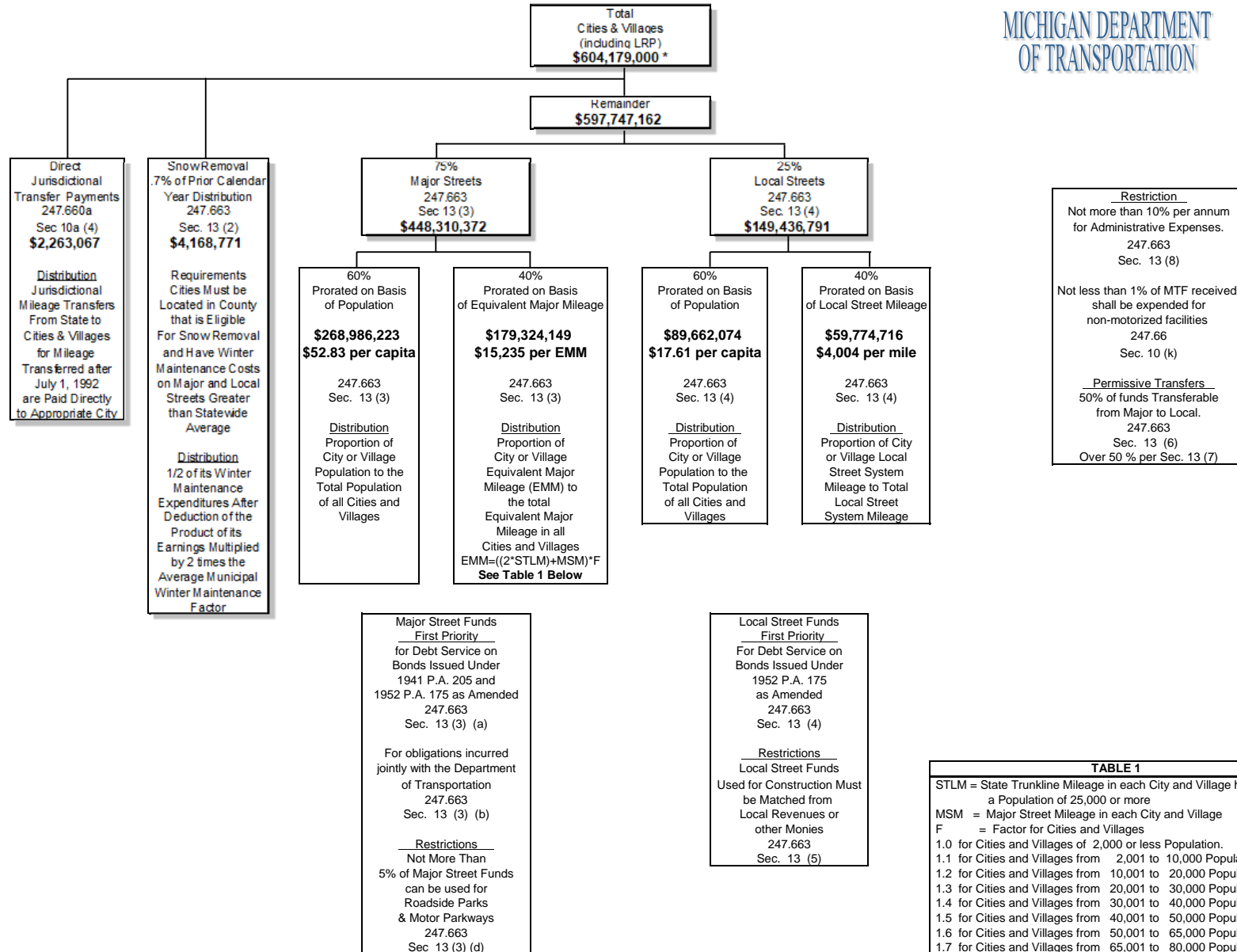


MICHIGAN DEPARTMENT OF TRANSPORTATION

Fiscal Year 2020 Actual
Michigan Transportation Fund Distribution Data



* All dollar amounts based on actual cash basis distribution, including Local Road Program for the fiscal year of October 1, 2019 through September 30, 2020.

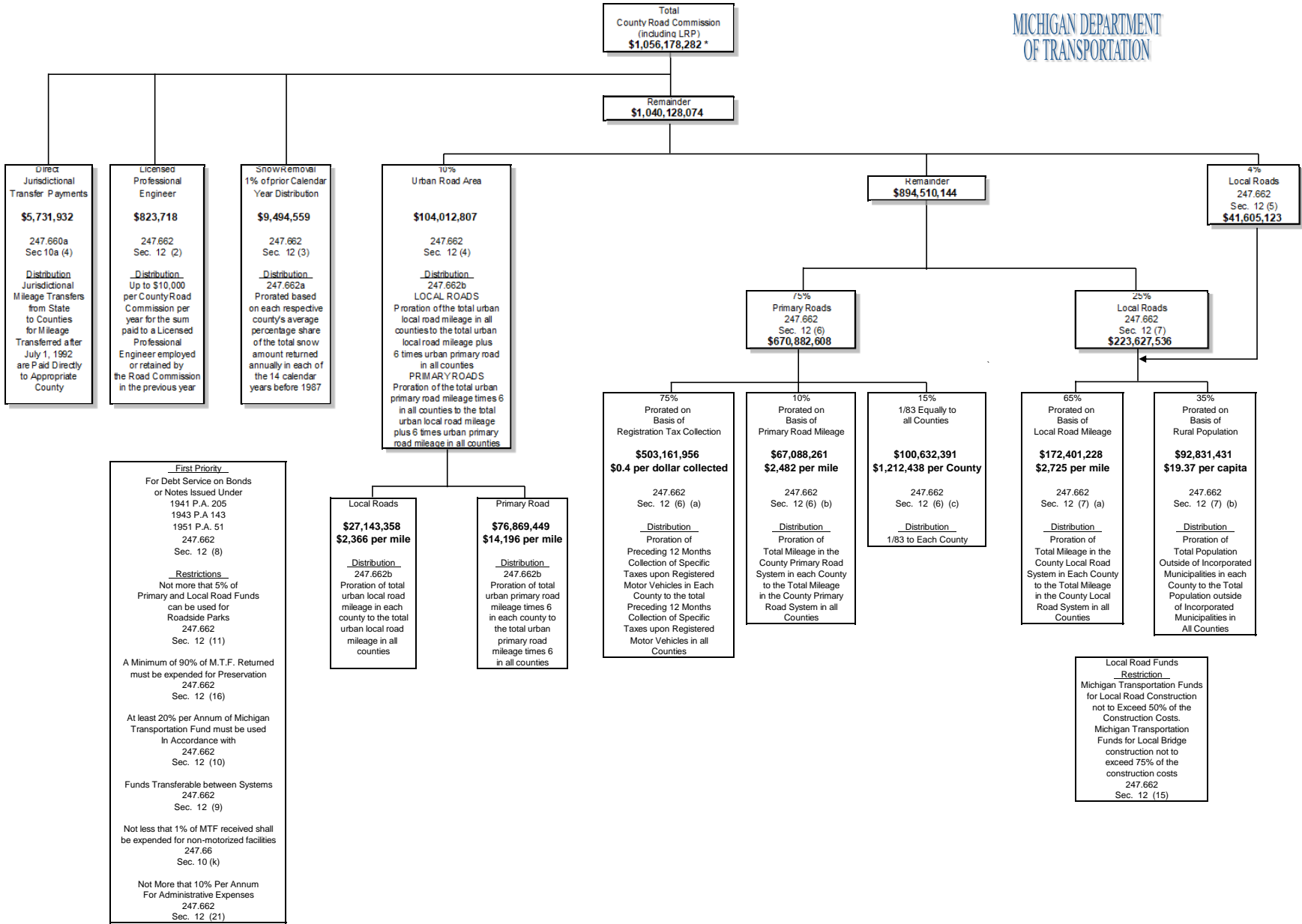


* All dollar amounts based on actual cash basis distribution, including Local Road Program for the fiscal year of October 1, 2019 through September 30, 2020.

TABLE 1

STLM = State Trunkline Mileage in each City and Village having a Population of 25,000 or more
MSM = Major Street Mileage in each City and Village
F = Factor for Cities and Villages

- 1.0 for Cities and Villages of 2,000 or less Population.
- 1.1 for Cities and Villages from 2,001 to 10,000 Population.
- 1.2 for Cities and Villages from 10,001 to 20,000 Population.
- 1.3 for Cities and Villages from 20,001 to 30,000 Population.
- 1.4 for Cities and Villages from 30,001 to 40,000 Population.
- 1.5 for Cities and Villages from 40,001 to 50,000 Population.
- 1.6 for Cities and Villages from 50,001 to 65,000 Population.
- 1.7 for Cities and Villages from 65,001 to 80,000 Population.
- 1.8 for Cities and Villages from 80,001 to 95,000 Population.
- 1.9 for Cities and Villages from 95,001 to 160,000 Population.
- 2.0 for Cities and Villages from 160,001 to 320,000 Population. and for Cities over 320,000 Population by a factor of 2.1 increased successively by 0.1 for each 160,000 Population increment over 320,000.



* All dollar amounts based on actual cash basis distribution, including Local Road Program for the fiscal year of October 1, 2019 through September 30, 2020.