



I-94 @ M-40 PEL STUDY

LOCAL ADVISORY COMMITTEE - MEETING 1

March 5, 2020

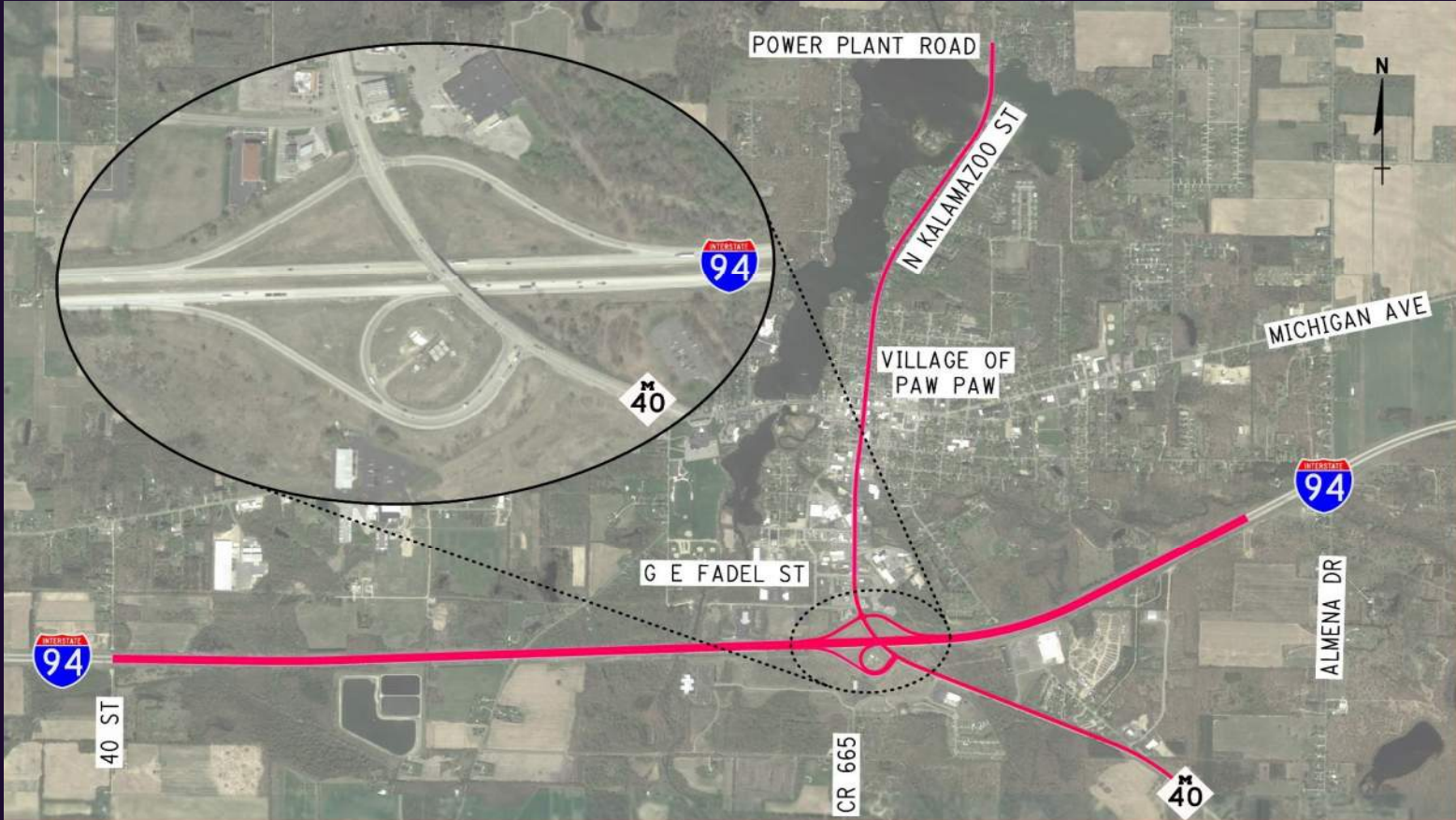
Agenda

Meeting Topics:

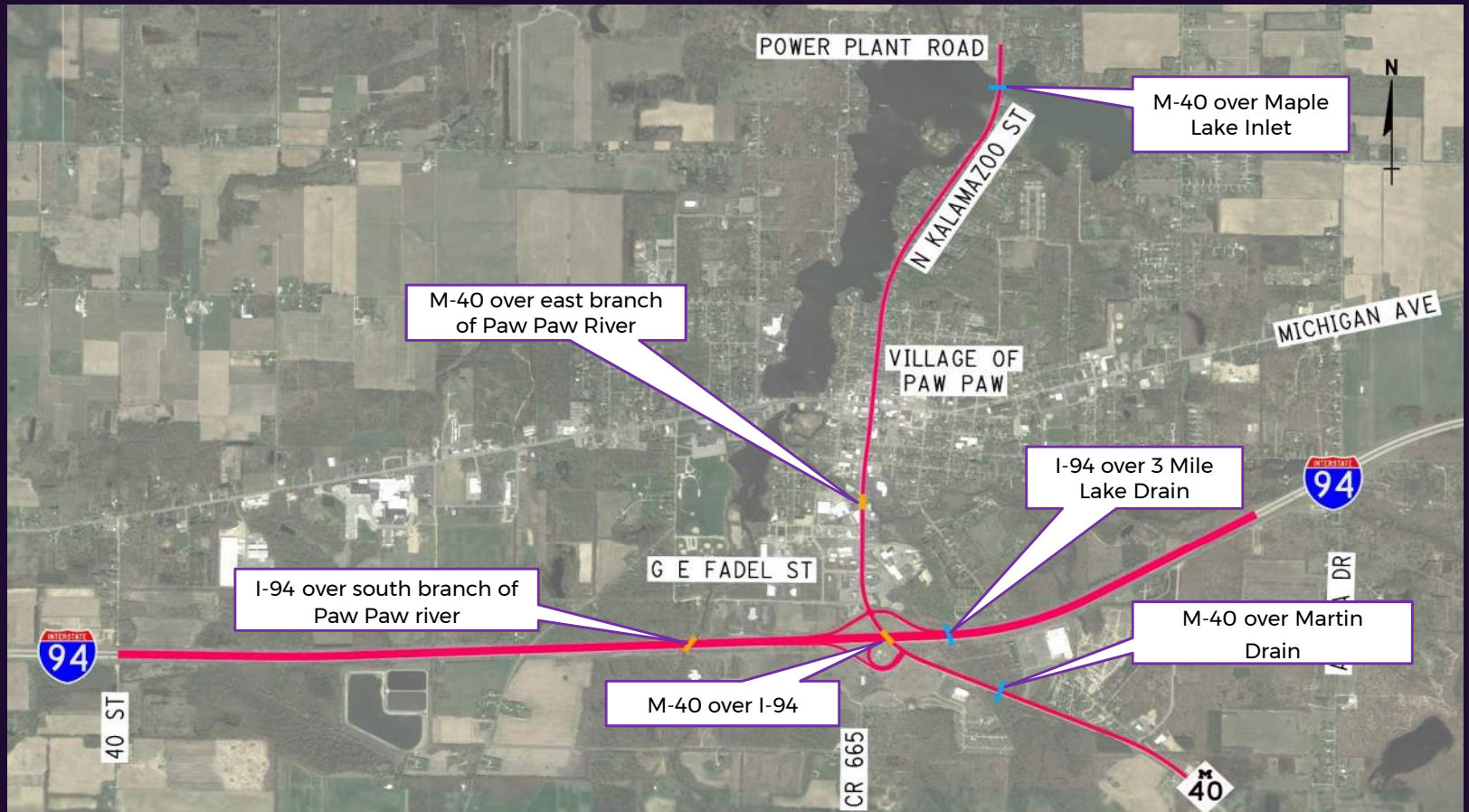
- Project introduction and overview of study process
- Discuss existing conditions and data
- Collaboration on draft purpose and need statement
- Communication plan moving forward



Project overview



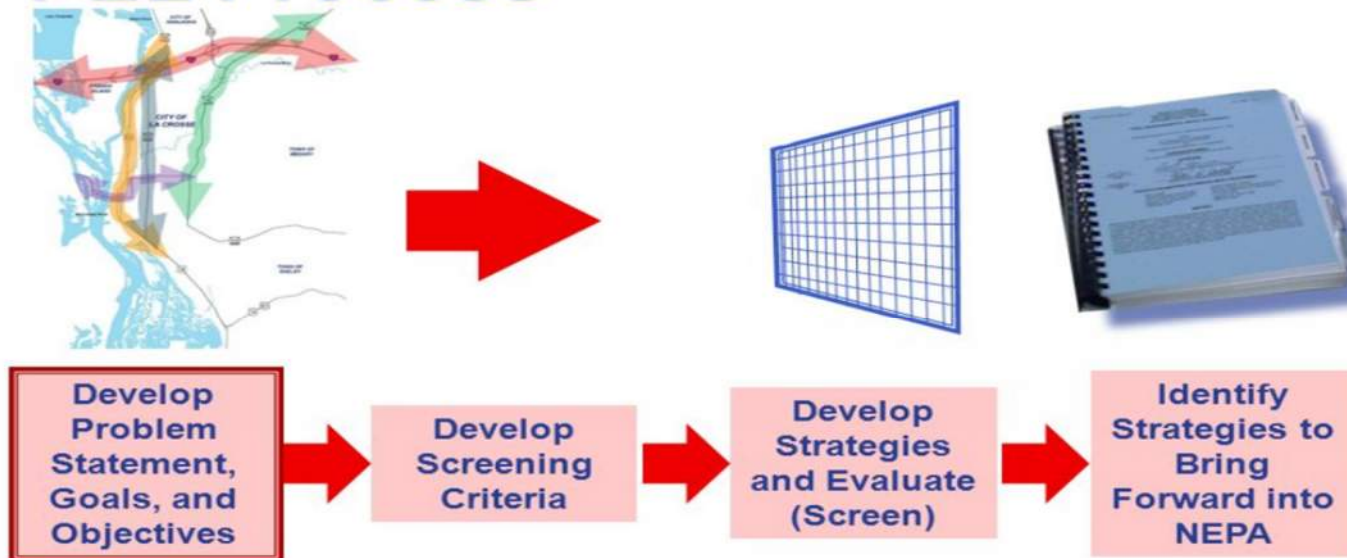
Bridges/Culverts being evaluated



What is PEL?

Planning and Environmental Linkages

PEL Process



I-94 @ M-40 Study Process



- Community engagement
- Develop project purpose and need (P&N)
- Develop alternatives and screening criteria matrix based on P&N
- Refine alternatives
- Arrive at recommended alternative



Existing Conditions (M-40 Bridge)



Existing Conditions (M-40 Bridge)



Existing Conditions (M-40 Bridge)



Existing Conditions (traffic)



Existing Conditions (traffic)

	Traffic lights	Stop signs /roundabout
Level of service	Delay (s/veh)	Delay (s/veh)
A	0-10	0-10
B	10-20	10-15
C	21-35	16-25
D	36-55	26-35
E	56-80	36-50
F	>80	>50

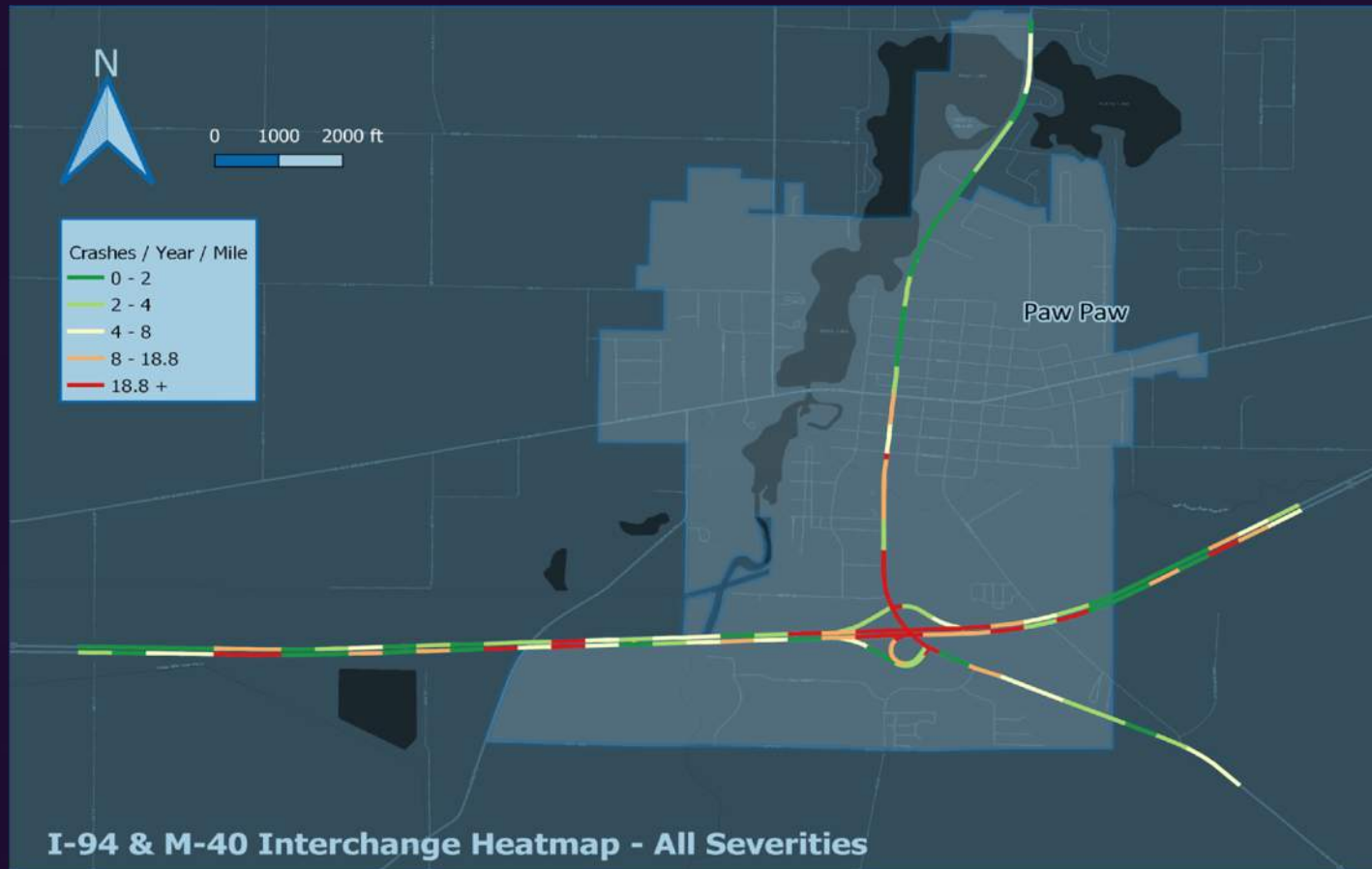
Peak	Intersection	Northbound				Southbound				Eastbound				Westbound				Total
		LT	TH	RT	Approach	LT	TH	RT	Approach	LT	TH	RT	Approach	LT	TH	RT	Approach	
AM	M-40 and Walmart Driveway*	NA	A	A	A	A	A	NA	A	NA	NA	NA	NA	C	NA	B	B	A
	M-40 and CR 665*	A	A	A	A	A	A	A	A	C	NA	A	C	B	NA	B	B	A
	I-94 EB and M-40	NA	A	NA	A	NA	A	NA	A	C	NA	A	B	NA	NA	NA	NA	A
	I-94 WB and M-40*	A	A	NA	A	NA	A	A	A	NA	NA	NA	NA	E	NA	B	B	A
	M-40 and Ampey Rd*	A	A	A	A	A	A	A	A	B	NA	B	B	C	NA	C	C	A
	M-40 and G E Fadel St	A	A	NA	A	A	A	NA	A	C	B	NA	B	C	B	NA	C	A
PM	M-40 and Walmart Driveway*	NA	A	A	A	A	A	NA	A	NA	NA	NA	NA	D	NA	B	C	A
	M-40 and CR 665*	A	A	A	A	A	A	A	A	F	NA	B	F	B	NA	B	B	C
	I-94 EB and M-40	NA	A	NA	A	NA	A	NA	A	C	NA	A	B	NA	NA	NA	NA	A
	I-94 WB and M-40*	B	A	NA	A	NA	A	A	A	NA	NA	NA	NA	F	NA	C	E	A
	M-40 and Ampey Rd*	A	A	A	A	B	A	A	A	B	B	B	B	E	NA	E	E	A
	M-40 and G E Fadel St	A	B	NA	B	A	A	NA	A	C	B	NA	B	C	B	NA	C	B

*=Unsignalized Intersection



Existing Conditions (safety)

Most recent 5 yrs of crash data



Existing Conditions (safety)

Most recent 5 yrs of crash data



Project Specific Purpose & Need



What is a Purpose and Need?

Articulates transportation needs that should be addressed and provides the basis to evaluate how well alternatives meet needs, in context of their environmental impacts and other costs and benefits.

- What is scope of the study?
- What is the vision for the project and transportation goals and objectives to realize that vision?





Why do we need a Purpose and Need Statement?

- Provides the basis for the alternatives evaluation
- Required for environmental clearance and Federal approval

How will we use the Purpose and Need Statement?

- Helps keep the alternatives from growing beyond project intent
- Helps stakeholders and public understand issues and why decisions are made

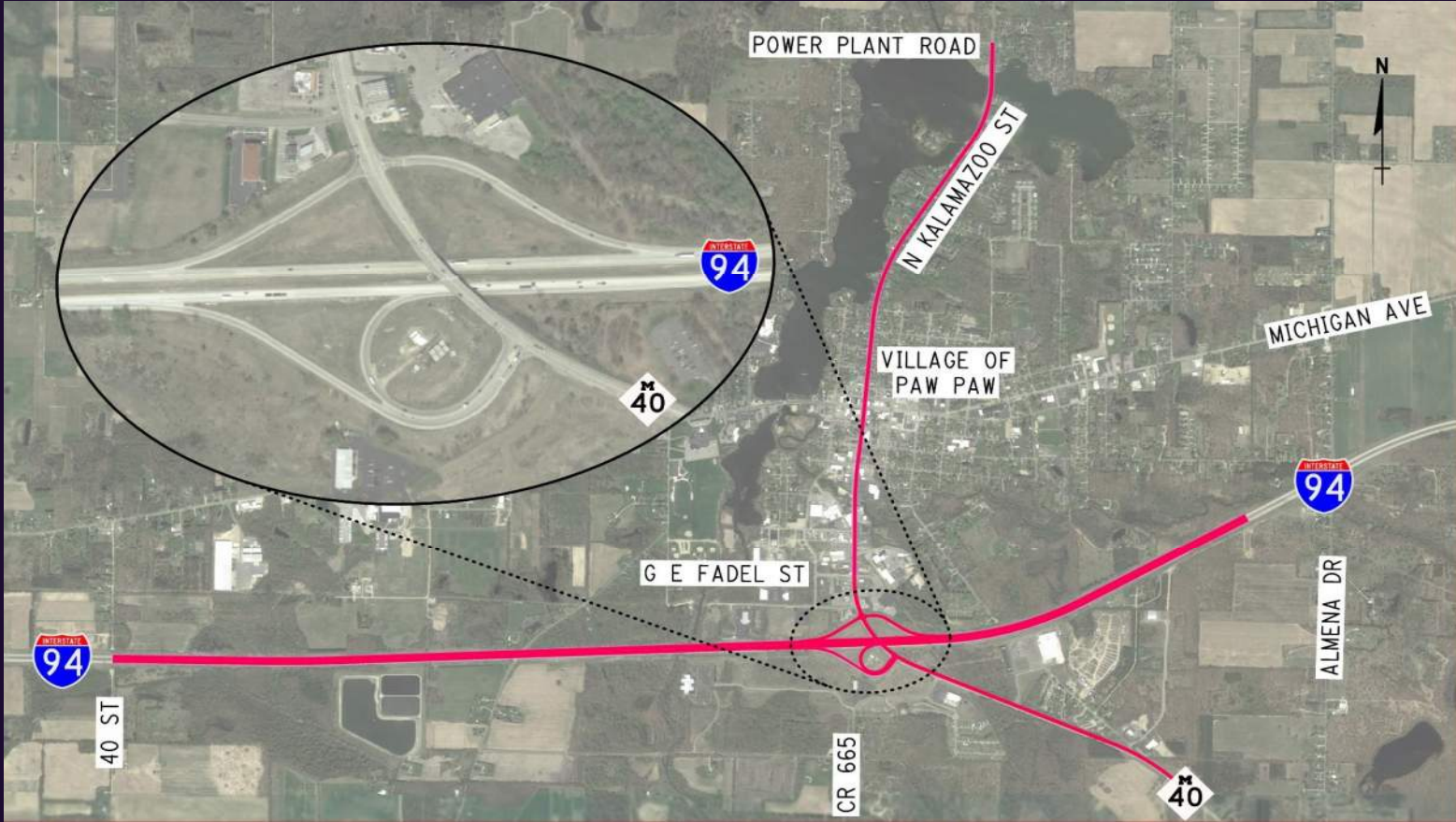


I-94/M-40 Project Objectives

(Initial basis for Purpose and Need)

1. Identify an Interchange Alternative that efficiently and safely improves mobility and addresses Purpose and Need
2. Roadway scoping for EB I-94 and M-40 to identify the best fix type with available funding
3. Bridge and Culvert scoping to identify the best fix type with available funding

Local Concerns/Priorities

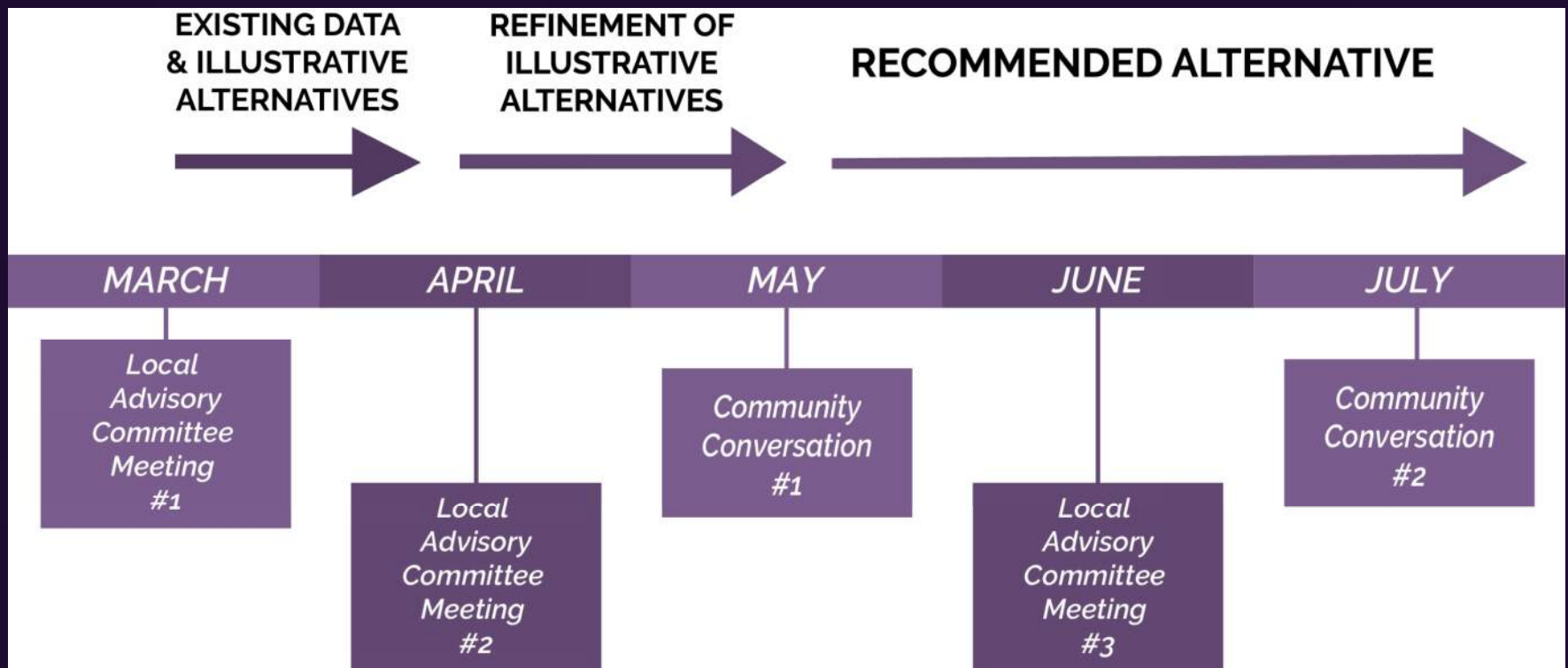




What is the Purpose for the project?

What is the Need for the project?

Communication moving forward





Questions?

Contact

Kyle Rudlaff, P.E.

MDOT Project Manager

RudlaffK@Michigan.gov



Example Purpose and Need

Purpose:

The purpose of the US-31/M-37 (Division Street) Planning and Environmental Linkages (PEL) is to improve safety and operations for all users of this designated National Highway System route while minimizing negative impacts to the natural environment and adjoining properties and enhancing positive benefits to the neighborhoods, parks, businesses, and all users of the corridor.

This Planning and Environmental Linkages process addresses Division Street between Fourteenth Street/Silver Lake Road and Grandview Parkway and will:

- Create a plan that accommodates the many interests of its users (drivers, pedestrians, bicyclists, commuters, commercial traffic, trucks, businesses, residents)
- Provide improved operations along Division Street
- Provide for traffic calming, context sensitive solutions, and complete streets design elements where possible
- Improve non-motorized mobility within the corridor
- Minimize impacts on the natural environment

Need:

- Improve opportunities for pedestrians, assisted device users, and bicyclists to cross Division Street
- Improve traffic mobility and operations
- Decrease crashes along the corridor