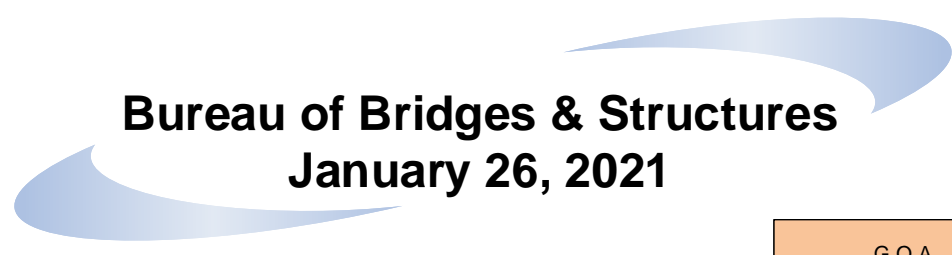


Bureau of Bridges & Structures

January 26, 2021



Bureau Director
Matt Chynoweth
Unit 3410 / Activity 3012

S.E.M.A
Jana Grover
Unit 3410 / Activity 3012

Blue Water Bridge
State Office Administrator 17
Amy Winn-VanHoeck
Unit 5520

G.O.A.
Kayla McClean
Unit 3410 / Activity 3012

Personnel Liaison
DA 12
Allecia Ridge
Unit 3410 / Activity 3012

Financial Analyst
FA 12
Joel Doty
Unit 3410 / Activity 3012

Student Assistant
VACANT
Unit 3410 / Activity 3012

Transportation Tech
TT 10
Michelle Billington
Unit 5030 / Activity 3012

SAM 15
Sutapa Datta
Unit 3410 / Activity 3012

BOBS FTE Cap = 180
 Vacancies = 12
 Bureau Staff = 168
 FTE Section Cap Values:
 BOBS Executive = 7
 Structure Design Section = 43
 Geotechnical Services Section = 15
 Structure Construction Section = 16
 Structure Preservation and Management = 59
 *Bridge Management Section = 20
 *Bridge Preservation Section = 39
 Blue Water Bridge = 43
 No one in dotted boxes counts toward headcount.
 LTA vacancies not included in above vacancy count.

Structure Design Section
SAM 15
Brad Wagner
Unit 3870 / Activity 3015

Secretary 9
Melissa Banghart
Unit 3870 / Activity 3012

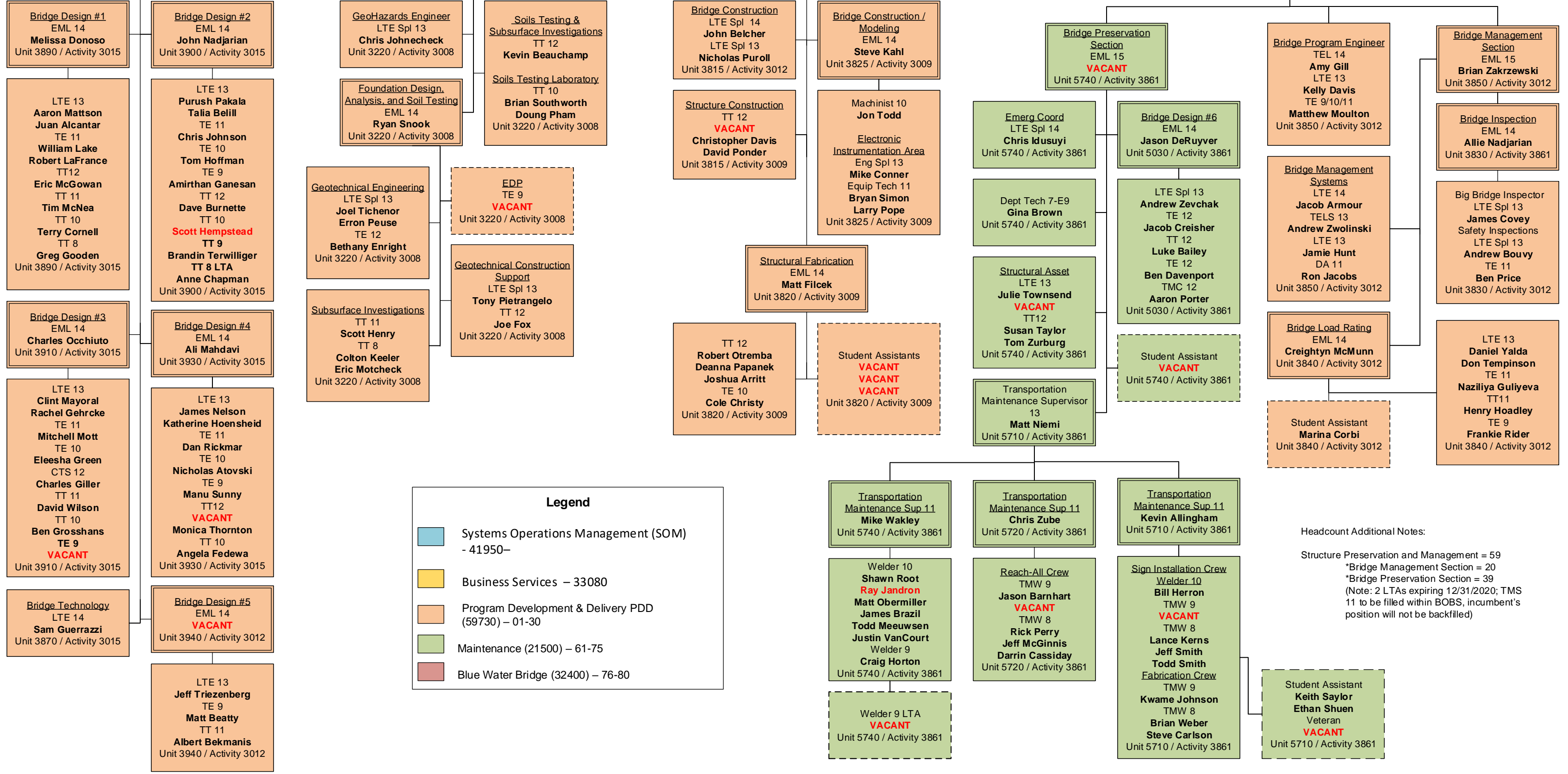
Geotechnical Svcs Section
SAM 15
Richard Endres
Unit 3220 / Activity 3008

Secretary 9
Carol Casteel
Unit 3220 / Activity 3008

Structure Construction Section
SAM 15
Rick Liptak
Unit 3815 / Activity 3009

Structure Preservation & Mgmt
State Office Administrator 17
Rebecca Curtis
Unit 3850 / Activity 3012

Executive Secretary E10
Sarah Wedley
Unit 3850 / Activity 3012



Legend

- Systems Operations Management (SOM) - 41950-
- Business Services - 33080
- Program Development & Delivery PDD (59730) - 01-30
- Maintenance (21500) - 61-75
- Blue Water Bridge (32400) - 76-80

Headcount Additional Notes:
 Structure Preservation and Management = 59
 *Bridge Management Section = 20
 *Bridge Preservation Section = 39
 (Note: 2 LTAs expiring 12/31/2020; TMS 11 to be filled within BOBS, incumbent's position will not be backfilled)