

# **FACT SHEET**

## **I-275 and M-153 (Ford Road) Area**

### **Traffic and Environmental Study and Evaluation**

Public Information Meeting – March 27, 2013

Summit on the Park, Canton, MI

#### **Purpose**

The Michigan Department of Transportation (MDOT) is investigating improvements to existing traffic and roadway features while recognizing the needs of local municipalities and commercial businesses in the study area. Today, MDOT will share new data that has been gathered, recap the second public meeting, and present the Practical Alternatives.

#### **Study Area**

The study area for the project is bordered by Sheldon Road, Warren Road, Lotz Road, and Cherry Hill Road as indicated on the map located on the back side of this fact sheet.

#### **Practical Alternative Quick Facts**

1. *No-Build*: Assumes no changes from current conditions.
2. *Operational Improvements\**: Addition of a westbound through-lane on Ford Road from I-275 to Sheldon Road and eastbound through-lane from Lilley Road to I-275. Numerous right-turn lanes added to Ford Road and side roads.
3. *Boulevard\**: Provides a two-lane boulevard along Ford and Haggerty roads in each direction, with restricted left turns at intersections, numerous passenger vehicle turnarounds, and truck turnarounds where necessary.

#### **\*Additional Improvements:**

- Pave Lotz Road
- Provide alternative truck route for southbound Haggerty Road to I-275

#### **Next Steps**

- Determine the Preferred Alternative
- Finalize Traffic and Environmental Study
- Present the Preferred Alternative at the next public meeting in summer 2013

#### **MDOT Project Manager**

Gorette Yung, P.E.

MDOT Taylor TSC

6510 Telegraph Road, Taylor, MI 48180

Phone: 313-375-2400

E-mail questions to: [yungg@michigan.gov](mailto:yungg@michigan.gov)

E-mail comments to: [MDOT-ford275@michigan.gov](mailto:MDOT-ford275@michigan.gov)

More information can be found at: [www.michigan.gov/mdotstudies](http://www.michigan.gov/mdotstudies)



# FACT SHEET

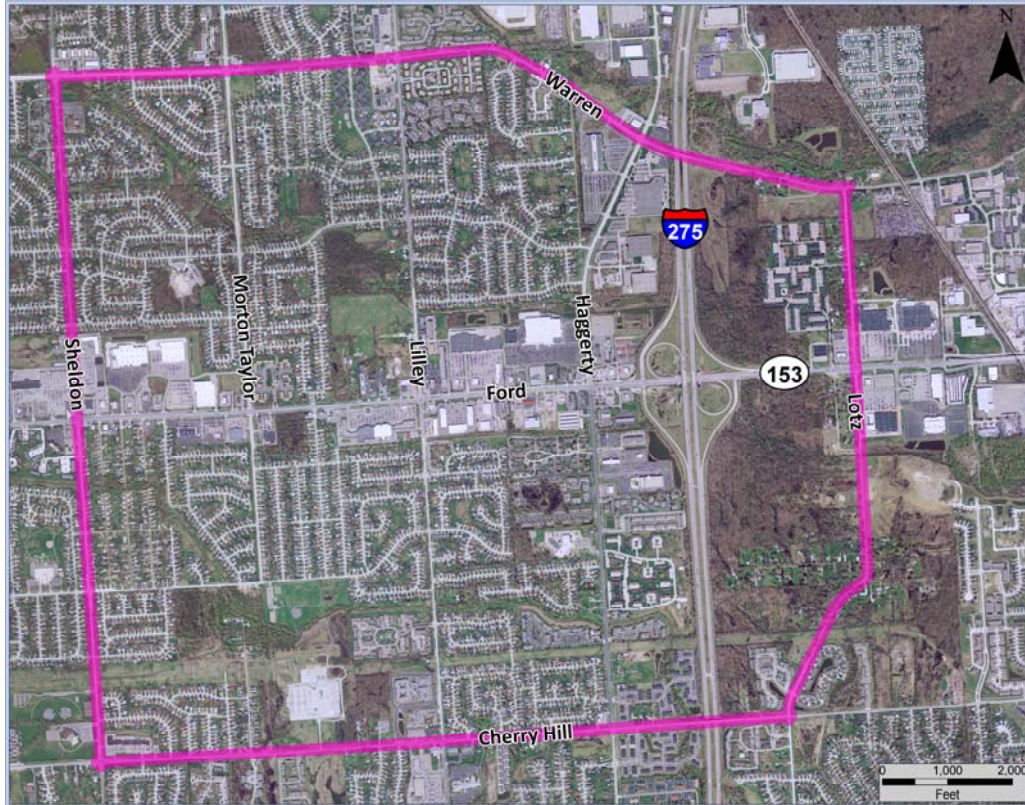
## I-275 and M-153 (Ford Road) Area

### Traffic and Environmental Study and Evaluation

Public Information Meeting – March 27, 2013

Summit on the Park, Canton, MI

#### Study Area Map



#### Schedule

