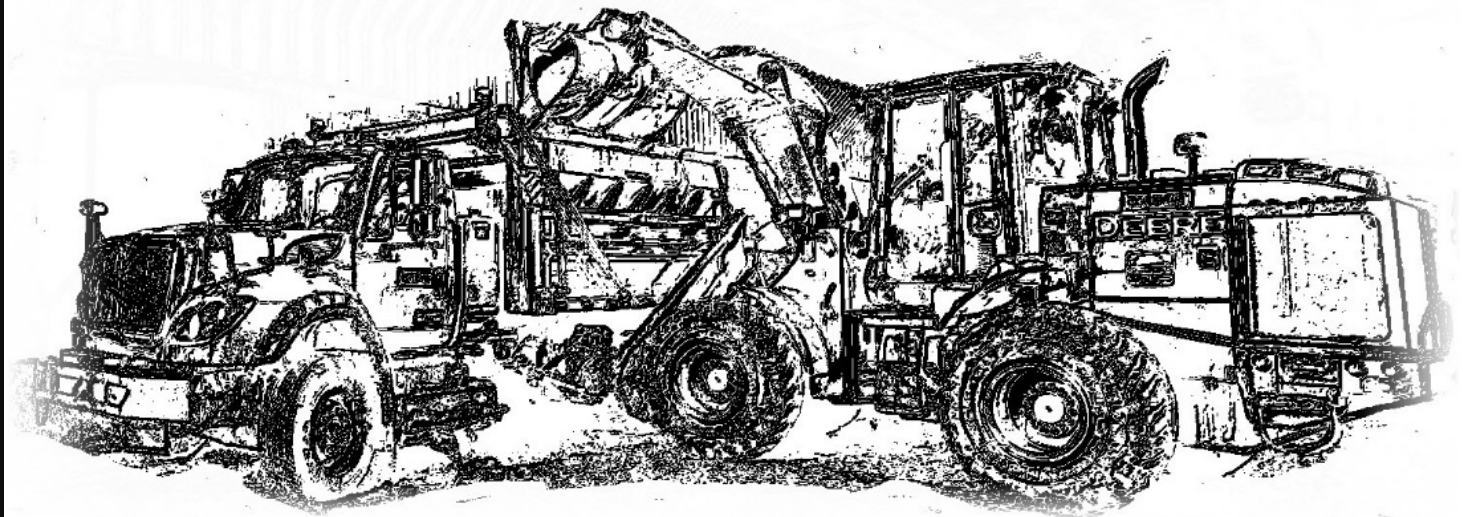


# Equipment Rental Rates

## *Schedule C*



## **REPORT 375**

*Effective January 1 through December 31, 2018*



**Equipment Rental Rates (Schedule C)  
Report 375**

**EFFECTIVE JANUARY 1, 2018**

**THROUGH**

**DECEMBER 31, 2018**

Hourly equipment rental rates are based on the following data reported by County Road Commissions on the county equipment questionnaires:

1. Expenses: Direct repair, indirect repair and storage, operating and depreciation.
2. Hours of equipment operation.

These rates were computed by using 2016 actual expenses of County Road Commissions, plus a factor for estimated increased costs between 2016 and 2018.

Counties possessing a State Trunk Line Maintenance Contract will be reimbursed at these rates. However a county may elect to use a modified rate for reimbursement, in accordance with subsection 15(F) of the contract.

## Table for Computing Equipment Depreciation

### 5 Year Depreciation

10.100, 10.200, 12.300, 12.301, 12.302, 12.303, 12.304, 12.305, 12.306, 12.307, 12.400, 12.501, 12.502, 12.503, 12.504, 31.100, 31.400, 62.500, 63.420, 63.430, 63.500, 63.510, 63.550, 63.554, 63.560, 63.565, 63.570, 63.575, 63.600, 63.700, 63.701, 63.702, 63.801, 63.802, 81.110, 81.120, 81.130, 81.251, 81, 252, 81.253, 81.254, 81.255, 81.256, 81.257, 81.258, 81.261, 81.262, 82.110, 82.119, 82.120, 82.121, 82.122, 82.128, 82.130, 82.140, 95.350

Calendar Year Month	Fiscal Year 10/1 – 9/30 Month	Month	Year of Purchase	Depreciation Years				
				2 <sup>nd</sup> Year	3 <sup>rd</sup> Year	4 <sup>th</sup> Year	5 <sup>th</sup> Year	6 <sup>th</sup> Year
January	October	1	33.00%	27.00%	20.00%	13.00%	7.00%	0.00%
February	November	2	30.25%	27.50%	20.58%	13.59%	7.50%	0.58%
March	December	3	27.50%	28.00%	21.17%	14.16%	8.00%	1.17%
April	January	4	24.75%	28.50%	21.75%	14.75%	8.50%	1.75%
May	February	5	22.00%	29.00%	22.33%	15.34%	9.00%	2.33%
June	March	6	19.25%	29.50%	22.92%	15.91%	9.50%	2.92%
July	April	7	16.50%	30.00%	23.50%	16.50%	10.00%	3.50%
August	May	8	13.75%	30.50%	24.08%	17.09%	10.50%	4.08%
September	June	9	11.00%	31.00%	24.67%	17.66%	11.00%	4.67%
October	July	10	8.25%	31.50%	25.25%	18.25%	11.50%	5.25%
November	August	11	5.50%	32.00%	25.83%	18.84%	12.00%	5.83%
December	September	12	2.75%	32.50%	26.42%	19.41%	12.50%	6.42%

### 8 Year Depreciation

All other equipment not listed in 5 year depreciation schedule.

Calendar Year Month	Fiscal Year 10/1 – 9/30 Month	Month	Year of Purchase	Depreciation Years							
				2 <sup>nd</sup> Year	3 <sup>rd</sup> Year	4 <sup>th</sup> Year	5 <sup>th</sup> Year	6 <sup>th</sup> Year	7 <sup>th</sup> Year	8 <sup>th</sup> Year	9 <sup>th</sup> Year
January	October	1	22.00%	19.00%	17.00%	14.00%	11.00%	8.00%	6.00%	3.00%	0.00%
February	November	2	20.17%	19.25%	17.16%	14.25%	11.25%	8.25%	6.17%	3.25%	0.25%
March	December	3	18.33%	19.50%	17.34%	14.50%	11.50%	8.50%	6.33%	3.50%	0.50%
April	January	4	16.50%	19.75%	17.50%	14.75%	11.75%	8.75%	6.50%	3.75%	0.75%
May	February	5	14.67%	20.00%	17.66%	15.00%	12.00%	9.00%	6.67%	4.00%	1.00%
June	March	6	12.83%	20.25%	17.84%	15.25%	12.25%	9.25%	6.83%	4.25%	1.25%
July	April	7	11.00%	20.50%	18.00%	15.50%	12.50%	9.50%	7.00%	4.50%	1.50%
August	May	8	9.17%	20.75%	18.16%	15.75%	12.75%	9.75%	7.17%	4.75%	1.75%
September	June	9	7.33%	21.00%	18.34%	16.00%	13.00%	10.00%	7.33%	5.00%	2.00%
October	July	10	5.50%	21.25%	18.50%	16.25%	13.25%	10.25%	7.50%	5.25%	2.25%
November	August	11	3.67%	21.50%	18.66%	16.50%	13.50%	10.50%	7.67%	5.50%	2.50%
December	September	12	1.83%	21.75%	18.84%	16.75%	13.75%	10.75%	7.83%	5.75%	2.75%

<i>MDOT Equipment Code</i>	<i>Equipment Description</i>	<i>Rate per Hour</i>
<b>10.000</b>	<b>AUTOMOTIVE</b>	
10.100	Car or station wagon (passenger type)	\$11.75
10.200	Bus – 5,400 G.V.W. Minimum	\$14.55
<b>11.000</b>	<b>TRAILERS (Flat Bottom Type)</b>	
11.100	Under 2 tons	\$7.60
11.101	2 tons minimum	\$8.84
11.102	6 tons minimum	\$10.47
11.103	10 tons minimum	\$18.25
11.104	15 tons minimum	\$21.22
11.105	25 tons minimum	\$23.72
<b>12.000</b>	<b>TRUCKS</b>	
	<i>Conventional only. Gas or diesel powered without optional accessories or attachments. Classified by G.V.W.R. (Gross Vehicle Weight Rating), assigned &amp; printed by the manufacturer on the Vehicle Certification.</i>	
12.300	Under 10,500	\$9.09
12.301	10,500 minimum	\$14.32
12.302	16,000 minimum	\$17.25
12.303	19,500 minimum	\$19.31
12.304	23,000 minimum	\$22.62
12.305	26,000 minimum	\$32.14
12.306	33,000 minimum	\$51.68
12.307	41,000 minimum	\$53.87
	<i>All-Wheel Drive Only. Gas or Diesel powered without optional accessories or attachments. Classified by G.V.W.R. (Gross Vehicle Weight Rating), assigned by the manufacturer on the Vehicle Certification Label.</i>	
12.400	Under 20,000	\$11.73
12.401	20,000 minimum	\$22.09
12.402	35,000 minimum	\$46.83
12.403	40,000 minimum	\$49.62
12.404	43,000 minimum	\$53.73
12.405	51,000 minimum	\$69.67
12.410	Multipurpose 4 WD truck/tractor	\$28.61

<b>MDOT Equipment Code</b>	<b>Equipment Description</b>	<b>Rate per Hour</b>
	<i>Tandem only. Gas or diesel powered without optional accessories or attachments. Classified by G.V.W.R. (Gross Vehicle Weight Rating), assigned and printed by the manufacturer on the Vehicle Certification Label.</i>	
12.501	Under 41,000	\$48.99
12.502	41,000 minimum	\$54.94
12.503	49,000 minimum	\$55.30
12.504	57,000 minimum	\$57.87
12.507	Tri-Axle gas or diesel without optional accessories	\$82.33
12.508	Quad-Axle gas or diesel without optional accessories	\$52.29
13.100	Camper body, pickup mounted	\$0.37
13.200	Portable hydraulic dump box (for pickup trucks)	\$0.97
13.400	Enclosed van trailer	\$4.15
14.100	Super haul body	\$2.56
14.125	Dump box liner	\$1.58
14.200	Hydraulic hook loader	\$4.28
<b>20.000</b>	<b>BITUMINOUS DISTRIBUTORS AND KETTLES</b>	
	<i>Distributor tank with motorized pump, heater, distributor bar (not including truck or tractor)</i>	
20.201	400 gallon minimum capacity	\$15.78
20.202	1,000 gallon minimum capacity	\$25.83
20.203	2,500 gallon minimum capacity	\$49.32
	<i>Bituminous Kettles - Hand Operated, Spray Assembly for Joint and Crack Filling, (trailer mounted)</i>	
20.401	Under 80 gallon capacity	\$7.71
20.402	80 gallon minimum capacity	\$9.29
20.403	165 gallon minimum capacity	\$11.79
20.404	225 gallon minimum capacity	\$15.18
20.405	300 gallon minimum capacity	\$15.73
20.406	500 gallon minimum capacity	\$16.05
20.520	Blower-starter (including compressor)	\$3.76
20.601	Hot rubber kettle	\$16.13
20.700	Lance (for blowing clean and heating crack prior to filling)	\$3.32
<b>21.000</b>	<b>HEATERS</b>	

<i>MDOT Equipment Code</i>	<i>Equipment Description</i>	<i>Rate per Hour</i>
	<b><i>Tank Car (fuel included)</i></b>	
21.101	1 car	\$21.28
21.102	2 cars	\$30.46
21.103	3 cars	\$32.51
21.200	Bituminous tool Heater (trailer mounted)	\$3.68
21.250	Heater for Bituminous Materials	\$4.62
21.260	Bituminous Materials Heater - Hopper box trailer mounted, with gas tank storage	\$9.80
21.265	Heated Bituminous Material Hopper Box with Hydraulic Shoveling Platform	\$26.99
21.300	Surface heater - for spot repairing of bituminous surface	\$4.08
21.301	Infrared surface heater - spot heating repairing of bituminous surfaces	\$62.64
21.350	Radiant heater - luminous wall	\$71.19
21.400	Heated asphalt roller (for spot repairing)	\$4.85
<b>23.000</b>	<b>BITUMINOUS MIXING &amp; PAVING EQUIPMENT</b>	
23.101	Asphalt recycling machine - portable	\$44.85
23.103	Hot mix patcher with heating and mixing system	\$44.69
23.120	Patching machine, cold mix w/rotor gun appl. (trailer mounted)	\$45.67
23.150	Self-contained patching machine (truck mounted, complete unit)	\$26.53
23.201	Bituminous paver - complete unit, self-propelled, loads, mixes, spreaders, and finishes	\$72.65
23.202	Bituminous paving finisher only, self-propelled	\$108.53
23.203	Bituminous spreader only, tailgate type	\$48.00
23.204	Multi-blade mixer - (including blades) used for mixing bituminous materials	\$14.39
23.205	Bituminous patching aid, shelf type	\$0.38
23.206	Asphalt Trailer, flowboy type (not including trailer)	\$48.46
23.207	Electronic screed control system	\$23.04
23.210	Self-propelled asphalt maintainer	\$47.41
23.300	Bituminous curb laying machine	\$15.02
23.310	Utility trench paver (attach. to bucket lip)	\$5.57
23.400	Complete asphalt plant	\$647.31
24.000	Portable Truck Scales - Platform type	\$0.31

<i>MDOT Equipment Code</i>	<i>Equipment Description</i>	<i>Rate per Hour</i>
	<b>BITUMINOUS SUPPLY TANK (portable with heater and pump)</b>	
25.300	Under 4,000 gallons minimum capacity	\$15.75
25.700	4,000 minimum capacity and greater (no pump)	\$98.64
26.100	Hydraulic powered planer (attachment only)	\$38.16
<b>30.000</b>	<b>CONCRETE MIXING AND PAVING EQUIPMENT</b>	
30.100	Curb and gutter paver	\$7.71
30.105	Curb and gutters forms	\$5.54
30.107	Bridge abutment forms	\$13.33
30.120	Concrete repair application gun (pneumatic)	\$11.17
	<b>CEMENT MIXERS</b>	
30.511	Under 2 ¼ cu. ft.	\$7.73
30.512	2 ¼ cu. ft. minimum	\$10.25
30.513	4 ½ cu. ft. minimum	\$15.17
30.514	9 cu. ft. minimum	\$15.97
30.520	Transit mixer without truck	\$34.39
30.700	Concrete vibrator	\$2.81
30.750	Vibrating screed, Motorized trowel	\$12.09
	<b>CONCRETE PAVEMENT SAW WITHOUT BLADES (charge blades to road materials)</b>	
31.100	Under 40 h.p.	\$28.52
31.400	40 h.p. minimum	\$53.02
31.410	Pneumatic pavement saw	\$5.73
32.000	Concrete grooving machine	\$22.38
32.100	Concrete plane	\$54.27
32.120	Concrete milling machine, 15" minimum width	\$57.11
32.130	Concrete milling machine, 35" minimum width	\$92.21
32.140	Concrete router	\$28.61
32.145	Pavement scarifier	\$38.47
<b>43.000</b>	<b>DITCHER - TRENCHERS - COMPLETE UNITS</b>	
43.110	Under 13" width	\$24.24
43.111	13" minimum width	\$37.13
43.112	24" minimum width	\$44.58

<i>MDOT Equipment Code</i>	<i>Equipment Description</i>	<i>Rate per Hour</i>
43.200	Under 13" width - attachment only - P.T.O. type	\$36.63
<b>44.000</b>	<b>ROCK RIPPERS, BRUSH RAKES, AND BULLDOZER BLADES (attachment only)</b>	
44.100	Rock ripper – each	\$7.07
44.150	Blade rake with brush guard (attachment to bulldozer blade)	\$10.49
	<b><i>Bulldozer blades - (cutting edge included)</i></b>	
44.200	Under 10' width	\$0.69
44.300	10' minimum width	\$1.53
44.400	12' minimum width	\$3.26
44.500	14' minimum width	\$6.76
<b>45.000</b>	<b>MOTOR GRADERS - Gas or diesel, including blades without optional accessories or attachments except roll over protection. Classified by standard machine weight.</b>	
45.101	Under 13,000 lbs.	\$36.41
45.102	13,000 lbs. minimum	\$43.29
45.103	16,000 lbs. minimum	\$43.79
45.104	21,000 lbs. minimum	\$48.50
45.105	24,000 lbs. minimum	\$49.38
45.106	27,000 lbs. minimum	\$50.16
45.107	30,000 lbs. minimum	\$66.44
	<b>MOTOR GRADER ATTACHMENTS</b>	
45.200	Scarifier - attachment (including teeth and controls)	\$1.95
45.225	Scarifier blade with rotating tips - attachment to moldboard	\$9.08
45.250	Automatic hydraulic blade control - attachment to motor grader	\$2.15
45.252	Automatic blade control electronic - attachment to motor grader	\$7.04
45.255	Ice/gravel scarifier attachment to grader blade	\$6.63
45.260	Highway (brush) cutter, hydraulic - attachment to motor grader	\$33.55
45.262	Snow wing attachment - (attaches to top of mold board)	\$2.22
45.264	Asphalt cutter - attachment to moldboard	\$34.89
45.265	Packer/roller hydraulic operated	\$12.25
45.270	Grade-slope-shoulder cutter (16" moldboard hydraulic attachment to motor grader)	\$34.70
45.280	Blade shock absorber – attachment to motor grader	\$0.63



<i>MDOT Equipment Code</i>	<i>Equipment Description</i>	<i>Rate per Hour</i>
45.290	Compaction crusher - attachment to motor grader	\$20.02
	<b>DRAWN GRADERS</b>	
45.305	Mechanical controls	\$5.47
45.310	Powered operated controls	\$6.10
<b>46.000</b>	<b>MAINTAINERS</b>	
46.100	Drawn - (including blades)	\$7.97
46.200	Hydraulic maintainer blade attachment to tractor	\$9.22
46.300	Self-powered berm cutter (tow type)	\$32.23
46.400	Windrow eliminator, attach. to tractor/grader	\$9.72
46.500	Tractor - type maintainer, min 40 h.p. 6,000 lbs., including power sliding moldboard without optional accessories. (Including powered)	\$12.08
<b>47.000</b>	<b>EXCAVATORS - SHOVEL, DRAGLINE, HOE, CLAMSHELL, AND CRANE. (CLASSIFIED BY CAPACITY OF BUCKET)</b>	
	<i>Crawler Mounted</i>	
47.201	Under ½ cubic yard bucket	\$14.24
47.202	½ cubic yard bucket minimum	\$30.45
47.203	¾ cubic yard bucket minimum	\$35.46
47.204	1 cubic yard bucket minimum	\$44.45
47.205	1 ½ cubic yard bucket minimum	\$51.36
47.206	2 cubic yard bucket minimum	\$65.18
	<i>Rubber tire mounted</i>	
47.301	Under ½ cubic yard bucket minimum	\$40.36
47.302	½ cubic yard bucket minimum	\$45.45
47.303	¾ cubic yard bucket minimum	\$55.07
47.304	1 cubic yard bucket minimum	\$58.63
	<i>Tractor shovel or loader - manufactured as a complete unit (classified by pounds of operating capacity or operating load. The operating capacity or load is based on 50% of the tipping load SAE rated with standard equipment; including roll over protection and in a full turn position if applicable).</i>	
47.401	Under 3,000 lbs. operating capacity or load	\$36.77
47.402	3,000 lbs. minimum operating capacity or load	\$38.40
47.403	4,500 lbs. minimum operating capacity or load	\$45.93
47.404	6,600 lbs. minimum operating capacity or load	\$47.15

<b>MDOT Equipment Code</b>	<b>Equipment Description</b>	<b>Rate per Hour</b>
47.405	7,500 lbs. minimum operating capacity or load	\$59.81
47.406	9,000 lbs. minimum operating capacity or load	\$62.77
47.407	10,500 lbs. minimum operating capacity or load	\$65.06
47.408	12,000 lbs. minimum operating capacity or load	\$65.36
47.450	Extendable Boom (non-hydraulic), Material handling arm - extends to 20'	\$35.15
47.460	Asphalt planer attachment (cutting width 24" and under)	\$13.53
47.465	Skid Steer Soil Conditioner, Harley Rake	\$16.51
47.470	Pallet Lifter	\$5.13
	<b><i>Hydraulic excavator - crawler or rubber tire mounted with telescoping boom (classified by standard machine weight, including roll over protection)</i></b>	
47.601	Without remote control (all)	\$46.15
47.602	With remote control - under 45,000 lbs.	\$49.65
47.603	With remote control - 45,000 lbs. minimum	\$53.75
47.700	Hydraulic wrist, allows bucket or attachment to swing up to 90 degrees from center	\$10.83
<b>48.000</b>	<b>UNDERBODY OR REAR MOUNTED SCRAPERS - (INCLUDING BLADES)</b>	
48.100	Mechanical	\$4.86
48.200	Air or hydraulic powered pressure on the moldboard	\$2.49
48.201	Air or hydraulic powered pressure on the moldboard and power reversing of the moldboard	\$8.41
48.202	Air or hydraulic powered pressure on the moldboard and power reversing and tilting of the moldboard	\$9.75
<b>48.400</b>	<b>EARTH HAULERS</b>	
	<b><i>Scraper only - including blades, (classified by rated capacity of scraper)</i></b>	
48.404	Under 5 cubic yards	\$10.82
48.406	5 cubic yards minimum	\$13.82
	<b><i>Scraper and rubber tired tractor - (including blades). Classified by rated capacity of scraper</i></b>	
48.501	Under 5 cubic yards minimum	\$27.01
48.502	5 cubic yards minimum	\$29.03
48.503	7 cubic yards minimum	\$38.96
48.504	9 cubic yards minimum	\$64.25
48.505	11 cubic yards minimum	\$84.79

<b>MDOT Equipment Code</b>	<b>Equipment Description</b>	<b>Rate per Hour</b>
48.506	13 cubic yards minimum	\$112.44
48.507	17 cubic yards minimum	\$113.36
48.508	21 cubic yards minimum	\$118.69
48.540	Single engine self-loading 16 cubic yard minimum	\$145.77
<b>50.000</b>	<b>EDUCTORS</b>	
50.200	1,000 - 2,000 gallon self-contained unit without truck	\$39.96
<b>51.000</b>	<b>SEWER CLEANING EQUIPMENT</b>	
	<b><i>Rods</i></b>	
51.100	Without power	\$6.13
51.150	1.3 h.p. electric motor minimum	\$6.42
	<b><i>Bucket machines or rodders</i></b>	
51.200	2 h.p. engine minimum	\$14.83
51.202	9 h.p. minimum	\$25.90
51.204	15 h.p. engine minimum	\$37.03
51.400	Attachment to fire hose	\$6.84
51.500	Hydraulic sewer cleaner (water type) with 1,000 PSI working pressure	\$18.55
51.510	Hydraulic sewer cleaner extension: self-propelled with trailer	\$11.05
51.515	Turbine Chain Cutter	\$10.15
51.520	Hydraulic pipe cutter, 18" to 48" adjustable	\$8.49
52.000	Steam thawing equipment - used exclusively for thawing drainage structures	\$35.28
<b>53.000</b>	<b>CATCH BASIN CLEANERS</b>	
53.100	Orange peel type bucket, without truck	\$25.51
53.300	Vacuum pump type without truck, or conveyor with bucket	\$27.33
<b>61.000</b>	<b>BRINE MAKING EQUIPMENT</b>	
61.100	Automated brine maker	\$37.55
<b>62.000</b>	<b>SNOW PLOWS</b>	
	<b><i>Rotary or auger, attachment only, including power unit (not including truck, grader, or tractor)</i></b>	
62.101	10 h.p. engine minimum	\$51.37
62.102	76 h.p. engine minimum	\$61.32
62.103	151 h.p. engine minimum	\$119.88

<i>MDOT Equipment Code</i>	<i>Equipment Description</i>	<i>Rate per Hour</i>
62.104	Power take-off	\$17.85
	<b><i>Rotary or auger - manufactured or assembled as a complete integral unit (self-propelled)</i></b>	
62.111	63 h.p. engine minimum	\$87.78
62.112	151 h.p. engine minimum	\$186.41
62.200	Vee plows - (all sizes -blades included)	\$11.39
62.300	One-way plows (all sizes - blades included)	\$11.99
62.320	Reversible plows, all sizes, manually operated	\$15.50
62.350	Reversible plows, all sizes, reverse hydraulically operated, blade included	\$12.93
	<b><i>Snow plow wings - (not including truck, grader, or tractor)</i></b>	
62.401	Manually operated	\$8.87
62.402	Power operated	\$11.79
62.403	Roto-wing (not including truck, grader, or tractor)	\$9.13
62.404	Guidance laser	\$3.03
62.490	Sidewalk - snow thrower, not self-propelled	\$3.44
62.500	Sidewalk - rotary, hand guided, self-propelled	\$15.35
62.501	Snow blower - attachment for tractor less than 6,000 lbs.	\$17.83
62.600	Extra-large vee plow (over 8 tons)	\$14.29
<b>63.000</b>	<b>SPREADERS - (not including truck)</b>	
	<b><i>Towed type</i></b>	
63.100	Traction driven spinner	\$10.32
63.125	Traction driven (without spinner)	\$11.69
	<b><i>Tailgate type</i></b>	
63.200	Roller or auger (without spinner) hydraulic, chain, motor, traction or truck tire friction drive without cab controls	\$6.28
63.250	Roller or auger (without spinner) hydraulic, chain, motor, traction or truck tire friction drive with hydraulic cab controls	\$5.78
63.300	With spinner, hydraulic, chain, motor, or truck tire friction drive without cab controls	\$6.87
63.350	With spinner, hydraulic, chain, motor, or truck tire friction drive with hydraulic cab controls	\$4.69
63.352	Hydraulic tailgate spreader with conveyor for right or left hand discharge	\$6.14
63.355	Hydraulic tailgate spreader ground sensing control system	\$1.53

<b>MDOT Equipment Code</b>	<b>Equipment Description</b>	<b>Rate per Hour</b>
63.360	Tailgate spreader same as 63.250 & 63.350 with a ground speed control system.	\$4.39
63.370	With spinner and auger, cab controlled; electric motor drive	\$18.97
63.390	Liquid spray system (pre-wetting of salt)	\$2.14
63.395	Anti-icing, dust control spray system (slide in type)	\$20.10
63.410	Gravity fed	\$2.16
	<b><i>Hopper box type</i></b>	
63.420	Gravity fed (hopper only) 3 cubic yard minimum	\$6.32
63.430	Truck or trailer mounted with conveyor and/or auger and spinner, 1 ¼ cubic yard minimum	\$10.84
63.500	Truck mounted with conveyor and/or spinner (including piggy-back type) 4 cubic yard minimum	\$11.38
63.510	Same as .500 plus ground speed sensors	\$10.34
63.550	Truck mounted with (hydraulic) cab controlled conveyor and/or spinner (including piggy-back types) 4 cubic yard minimum	\$9.35
63.554	Same as .550 plus ground speed sensors	\$9.46
63.560	Truck mounted with (hydraulic) cab controlled conveyor and/or spinner (including piggy-back types) 10 cubic yard minimum	\$8.55
63.565	Same as .560 plus ground speed sensors	\$10.77
63.570	Truck mounted, cab controlled with side delivery system mounted on rear of box for centerline discharge and ground speed sensors	\$5.27
63.575	Truck mounted, cab controlled with side delivery system on rear of box for center line discharge	\$11.09
63.600	Same as 63.550 & 63.560, but with automatic-electronically operated hydraulic valve/control system and with electronic ground speed sensors	\$10.04
63.625	EPOKE combination spreader	\$42.77
	<b><i>Trailer, v-bottom type - including spreader with conveyor and/or spinner</i></b>	
63.700	8 cubic yard minimum capacity	\$8.88
63.701	11 ½ cubic yard minimum capacity	\$14.76
63.702	14 cubic yard minimum capacity	\$31.82
	<b><i>Two-way spreader</i></b>	
63.801	Dump tilts forward as spreader with auger and spinner, and tilts back as tailgate dump. 6 cubic yard	\$27.11
63.802	Same as 63.801 but 12 cubic yard minimum	\$37.16

<i>MDOT Equipment Code</i>	<i>Equipment Description</i>	<i>Rate per Hour</i>
<b>70.000</b>	<b>TRACTORS - Wheel or crawler - gas or diesel powered, without optional accessories or attachments. Classified by standard machine weight including roll over protection.</b>	
70.100	Under 1,000 lbs.	\$21.63
70.101	1,000 lbs. minimum	\$34.55
70.102	6,000 lbs. minimum	\$39.12
70.103	10,000 lbs. minimum	\$41.09
70.104	16,000 lbs. minimum	\$50.31
70.105	21,000 lbs. minimum	\$57.77
70.106	35,000 lbs. minimum	\$71.29
70.500	Backhoe attachment to tractor, 12" minimum, without tractor	\$3.74
70.600	Concrete breaker (attaches to backhoe)	\$10.12
<b>80.000</b>	<b>FARM EQUIPMENT</b>	
	<i>Drag or harrow</i>	
80.201	Spring tooth - under 20' width	\$2.51
80.203	Spike tooth	\$6.63
80.204	Double disk	\$8.32
80.205	Klod buster	\$6.38
80.209	Disc shoulder conditioner	\$15.64
80.300	Drill and chemical fertilizer spreader	\$6.22
80.301	Mulch spreader - trailer or truck mounted (not including truck)	\$20.23
80.302	Hydro seeder - trailer or truck mounted (not including truck)	\$31.45
80.310	Hydro seeder - under 500 gallon capacity	\$10.60
80.312	Over seeder	\$33.63
80.500	Fence or sign post driver - power driver, (not pneumatic attachment), trailer mounted or tractor attachment	\$1.37
80.510	Fence or sign driver - pneumatic	\$0.63
80.540	Fence or sign drive - hydraulic	\$0.48
80.550	Fence or sign post puller - hydraulic attachment to truck	\$0.90
80.700	Post-hole digger or earth auger - power "takeoff" attach. or power propelled, hand operated	\$5.12
80.701	Power earth auger - trailer or truck mounted - not including truck	\$10.05
80.702	Concrete core drill unit without truck	\$12.47

<b>MDOT Equipment Code</b>	<b>Equipment Description</b>	<b>Rate per Hour</b>
80.703	Concrete core drill unit without truck, including diamond bits	\$14.21
80.704	Power rock or earth drill - vehicle mounted without compressor	\$18.21
80.705	Boring unit, hydraulic powered, PTO, not including truck or tractor	\$5.96
80.706	Hydraulic guardrail post pounder, puller, and hole auger, engine driven, (truck mounted not including truck)	\$53.48
80.707	Hydraulic platform for post (digging-driving-pulling) truck mounted; not including truck	\$9.16
80.708	Directional boring unit, self-contained	\$57.70
80.709	Digger derrick with accessories (truck mounted, not including truck)	\$25.21
80.710	Rock drill and breaker bar - gas, driver, self-contained	\$7.49
80.714	Earth drill, without compressor	\$15.56
80.750	Hydraulic doweling drill, with trailer	\$15.09
80.801	Stone Rake	\$10.47
80.802	Hay Rake	\$3.54
80.900	Sod Cutter - Drawn (attachment only)	\$8.73
80.901	Sod Cutter - Self-propelled (complete unit)	\$10.13
<b>81.000</b>	<b>MOWING EQUIPMENT</b>	
	<i>Highway mowers</i>	
81.110	Sickle-bar type, attachment only, tractor not included	\$22.41
81.120	Rotary, hammer, knife, or flail type, PTO, attachment only, tractor not included	\$14.35
81.130	Rotary, 15' minimum - attachment only, tractor not included	\$19.79
81.135	Rotary, 4' minimum - blade is hydraulic driven, brush cutter, tractor not included	\$18.17
81.140	Rotary, 5' minimum - weed and brush, blade is hydraulic driven, and with or without hydraulic arm, attachment only tractor not included	\$12.73
81.160	Rotary, self-leveling slope mower	\$13.02
	<i>Lawn mowers (reel, rotating or flail type)</i>	
81.251	Under 20"	\$4.79
81.252	20" minimum	\$11.27
81.253	24" minimum	\$12.11
81.254	30" minimum	\$14.02
81.255	36" minimum	\$17.36
81.256	49" minimum	\$23.08

<i>MDOT Equipment Code</i>	<i>Equipment Description</i>	<i>Rate per Hour</i>
81.257	61" minimum	\$24.00
81.258	Edger-trimmer / weed whacker	\$3.34
	<i>Sickle-bar type</i>	
81.261	Under 30" cutting width, hand guided	\$7.01
81.262	30" minimum cutting width, hand guided	\$7.37
	<i>Gang mowers - 24" to 30" reels - attachment or drawn, without tractor</i>	
81.276	3 reel type	\$5.46
81.300	Grass collecting system (tractor mounted)	\$4.56
<b>82.000</b>	<b>TREE EQUIPMENT</b>	
82.110	Buzz saw	\$5.56
	<i>Chain saws (gas or electric)</i>	
82.119	Under 18" bar	\$3.51
82.120	18" bar minimum	\$4.00
82.121	30" bar minimum	\$11.37
82.122	51" bar minimum	\$25.19
82.125	Gas powered multi-purpose cutoff saw (on concrete sawing, charge blade to project)	\$16.44
82.128	Reciprocating saw (tree trimming)	\$6.68
82.130	Brush (2 wheel mounted) powered circular saw	\$13.82
82.140	Brush (small) shoulder carried; chain, circular, or monofilament type	\$2.42
82.200	Brush or tree chipper for material under 9"	\$22.99
82.210	Brush or tree chipper for material 9" minimum	\$26.57
82.235	Hydraulic boom tree shearer	\$97.61
82.250	Total timber harvester - with hydraulic boom attached and conveyor feed (trees to 20" diameter.)	\$89.73
82.260	Log splitter - engine powered	\$7.47
82.290	Gas powered pruner with telescoping drive shaft	\$4.15
82.300	Hydraulic pole chain saw	\$3.29
82.305	Hydraulic pruner	\$4.73
82.405	Stump cutter	\$45.24
82.500	Tree spade, trailer mounted	\$14.86
82.501	Tree spade, truck mounted without truck	\$9.97
82.502	Grapple tree sheared	\$52.99



<b>MDOT Equipment Code</b>	<b>Equipment Description</b>	<b>Rate per Hour</b>
82.505	Timber fork	\$9.98
<b>83.000</b>	<b>STREET CLEANING EQUIPMENT</b>	
	<b><i>Brooms</i></b>	
83.110	Towed - traction or power take off type (attachment only)	\$17.35
83.120	Towed - engine powered - (attachment only)	\$33.44
83.130	Tractor or loader - engine powered, hydraulic or power take off drive (attachment only)	\$24.02
83.140	Self-propelled power broom	\$47.46
83.150	Hand-held power broom	\$5.88
	<b><i>Street sweepers - self-propelled with curb brushes and pickup attachment - classified by capacity of hopper</i></b>	
83.205	Under 1/3 cubic yard	\$24.95
83.210	1/3 cubic yard minimum	\$43.38
83.215	1 1/4 cubic yard minimum	\$44.28
83.220	2 cubic yard minimum	\$46.31
83.230	3 cubic yard minimum	\$86.59
83.240	4 cubic yard minimum	\$97.56
	<b><i>Leaf cleaners</i></b>	
83.300	Vacuum cleaner, trailer mounted (attachment only) without truck	\$30.94
83.301	Complete unit for catch basins and leaf pickup, including vacuum cleaner and storage box, truck not included	\$50.19
83.302	Sweeper - hand propelled and guided	\$3.52
83.303	Sweeper - self-propelled, hand guided	\$12.14
83.304	Sweeper - attachment to tractor with mechanical pickup	\$34.81
83.305	Leaf loader, brush pickup type, with 95 power unit minimum, truck not included	\$39.69
83.310	Vacuum type litter picker, self-propelled, riding, self-contained, vacuum, min. 8 h.p.; base unit minimum 8 h.p.	\$16.61
83.350	Mini-Vac system, skid mounted for truck or trailer	\$2.42
	<b><i>Flusher - complete (not including truck)</i></b>	
83.411	Under 1,400 gallons	\$5.45
83.412	1,400 gallons minimum and greater	\$6.84
83.500	Refuse collector, truck mounted, power operating (not including truck)	\$5.89

<b>MDOT Equipment Code</b>	<b>Equipment Description</b>	<b>Rate per Hour</b>
	<i>One man refuse collection vehicle - dual driving and compaction controls from either side of walk in cab: self-propelled and self-contained compactor</i>	
83.510	10 cubic yard minimum	\$26.04
83.520	25 cubic yard minimum	\$48.05
83.600	Compost turner (tractor not included)	\$25.12
83.700	Road magnet	\$1.70
83.720	Electromagnetic sweeper	\$24.65
<b>84.000</b>	<b>SPRAYING EQUIPMENT</b>	
84.200	Ultra-low volume aerosol generator, for insecticide	\$10.73
	<i>Hydraulic pressure type sprayer - for applying liquid insecticide or weed killer through nozzles (not including truck)</i>	
84.301	Under 60 gallon tank capacity	\$5.02
84.302	60 gallon minimum tank capacity	\$9.52
84.303	200 gallon minimum tank capacity	\$17.87
84.400	Spray boom attachment (not including truck, or trailer)	\$6.86
84.500	Meter, mix and flow or spray type sprayer - for applying epoxy and polyester resins and polyurethane foams	\$15.31
<b>85.000</b>	<b>LOADERS - CONVEYOR TYPE</b>	
	<i>Engine driven</i>	
85.100	Not self-propelled or feeding	\$37.98
85.101	Not self-propelled or feeding, with hopper box bin (minimum 10 cubic yard capacity)	\$34.09
	<i>Self-feeding</i>	
85.102	Not self-propelled	\$25.73
	<i>Self-feeding and self-propelled</i>	
85.104	2 cubic yard per minute minimum	\$20.33
85.105	6 cubic yard Per minute minimum	\$100.61
	<i>Front End Loaders: Bucket loader - attachment only - used with tractor code 70.000 series - tractor rate not included; or truck code series 12.000 - truck rate not included. Classified by rated capacity of bucket.</i>	
85.301	Under 1/3 cubic yard bucket	\$3.93
85.302	1/3 cubic yard bucket minimum	\$4.95
85.303	1/2 cubic yard bucket minimum	\$3.05

<b>MDOT Equipment Code</b>	<b>Equipment Description</b>	<b>Rate per Hour</b>
85.304	1 cubic yard bucket minimum	\$4.74
85.305	1 <sup>5</sup> / <sub>8</sub> cubic yard bucket minimum	\$8.95
85.306	2 <sup>1</sup> / <sub>4</sub> cubic yard bucket minimum	\$9.21
85.307	3 cubic yard bucket minimum	\$10.64
85.400	Snow bucket (used for snow removal only)	\$5.82
85.450	Guardrail Scuffer (hydraulic)	\$5.50
85.500	Pincher bucket	\$5.46
<b>86.000</b>	<b>PAINT EQUIPMENT</b>	
	<i>Pavement markers</i>	
86.200	Push type striper - using power, activated by compressed air and L.P. gas (without compressor)	\$7.75
86.201	Push type - felt roller or brush	\$9.75
	<i>Hand guided - engine powered</i>	
86.202	Not self-propelled	\$20.04
86.203	Self-propelled	\$33.49
	<i>Truck mounted without truck</i>	
86.205	Multiple line application	\$65.81
	<i>Integral unit, self-propelled, multiple line application</i>	
86.206	Under 30 gallon capacity	\$53.87
86.207	30 gallon minimum capacity	\$81.85
86.210	Traffic line remover - with 6 h.p. engine - self propelled	\$36.18
86.212	Traffic line remover - hand propelled	\$7.09
86.220	Roll type stripper machine, manual, portable double line 4" width	\$2.04
86.225	Airless paint sprayer	\$6.16
<b>87.000</b>	<b>COMPRESSORS - (including tools and attachments)</b>	
87.100	Under 60 c.f.m.	\$1.42
87.200	60 c.f.m. minimum	\$2.70
87.300	120 c.f.m. minimum	\$6.30
87.400	180 c.f.m. minimum	\$12.72
87.500	240 c.f.m. minimum	\$16.45
<b>88.000</b>	<b>PUMPS</b>	
	<i>Centrifugal - water or brine only (classified by outlet size)</i>	

<i>MDOT Equipment Code</i>	<i>Equipment Description</i>	<i>Rate per Hour</i>
88.101	Under 3"	\$5.40
88.102	3" minimum	\$5.58
88.103	4" minimum	\$13.43
88.104	6" minimum	\$14.52
88.105	Quarry - (10 inch minimum outlet)	\$7.75
88.120	Piston pump	\$14.64
88.200	Diaphragm	\$18.70
88.300	Rotary	\$7.81
88.400	Pneumatic	\$6.86
88.521	High pressure pumps - under 50 gal. p/minute	\$6.89
88.550	Fuel tank transfer pump, with meter & pump	\$0.33
88.600	Well point system - complete with pumps, well points, etc.	\$54.07
<b>89.000</b>	<b>ROLLERS</b>	
	<i>Towed type - cylinder (steel rollers)</i>	
89.101	1 ton	\$4.37
89.102	2 tons	\$6.30
89.103	Sheepsfoot	\$5.18
89.104	Compactor (concrete core, rubber-tire covered)	\$5.08
89.105	Aerifier - (rubber-tired or with 3 point hitch)	\$5.36
89.110	Patch roller (attachment to truck, hydraulic operated)	\$10.99
	<i>Rubber-tired (rated with full ballast) towed type</i>	
89.151	Under 11 tons	\$9.42
89.152	11 tons minimum	\$13.85
89.153	13 tons minimum	\$17.93
89.154	15 tons minimum	\$18.38
	<i>Self-propelled - steel rollers</i>	
89.201	Under 6 tons	\$28.50
89.202	6 tons minimum	\$34.27
89.203	9 tons minimum	\$44.72
	<i>Self-propelled - rubber rollers</i>	
89.301	Under 6 tons	\$28.05
89.302	6 tons minimum	\$34.33

<i>MDOT Equipment Code</i>	<i>Equipment Description</i>	<i>Rate per Hour</i>
89.303	9 tons minimum	\$51.27
89.400	Vibratory compactor, power driven, hand guided, 12" minimum width	\$10.10
89.401	Vibratory compactor, power driven, tractor attachment - 36" minimum width	\$15.66
89.402	Vibratory compactor, self-propelled (manufactured as a complete integral unit), 8' minimum width	\$55.30
89.404	Vibratory compactor, self-propelled (manufactured as a complete integral unit), 3' minimum width	\$35.85
<b>90.000</b>	<b>MIXERS – SOILS</b>	
90.050	With power takeoff, 10" maximum mixing depth	\$12.83
90.100	With power take off over 11" mixing depth (not including tractor)	\$29.13
90.200	Motorized pull type (not including tractor)	\$46.58
90.300	Integral unit for bituminous mix with spray bar, pump, etc. (self-propelled)	\$103.32
90.400	Small hand guided for gardening with motor	\$8.11
<b>91.000</b>	<b>TANKS</b>	
	<i>Tanks - water, brine, or emulsion only</i>	
91.100	Under 500 gals.	\$4.25
91.101	500 gals. minimum	\$9.20
91.102	1,250 gals. minimum	\$14.24
91.103	2,200 gals. minimum	\$16.33
91.104	4,000 gals. minimum	\$16.80
91.105	6,000 gals. minimum	\$25.54
	<i>Tanks with integrated running gear - water, brine or emulsion only</i>	
91.200	Under 500 gals.	\$6.77
91.201	500 gals. minimum	\$10.76
91.202	1,250 gals. minimum	\$16.67
91.203	2,250 gals. minimum	\$17.12
91.204	4,000 gals. minimum	\$18.58
91.205	6,000 gals. minimum	\$20.72
<b>92.000</b>	<b>AGGREGATE EQUIPMENT</b>	
	<i>Crushing plant- manufactured weight of rolls and/or jaws</i>	
92.101	Under 6,750 lbs.	\$104.11

<i>MDOT Equipment Code</i>	<i>Equipment Description</i>	<i>Rate per Hour</i>
92.103	13,500 lbs. minimum	\$121.31
92.104	27,000 lbs. minimum	\$152.53
92.180	Screening plant (roller cone type)	\$29.03
92.200	Screening plant	\$57.25
92.300	Screen - attachment to loader, 2' x 6'	\$15.72
	<b><i>Spreaders – Aggregate</i></b>	
92.401	Self-propelled	\$138.82
92.402	Towed type for shoulder surfacing with engine driven conveyer (not including truck)	\$64.28
92.403	Towed type, roller or auger (without spinner), hydraulic, chain motor, traction or truck tire friction drive	\$63.70
92.404	Pushed type for shoulder surfacing with engine driven conveyor (not including motor grader)	\$90.40
92.405	Push type for shoulder surfacing, hydraulic driven by grader (not including grader)	\$39.09
92.500	Measuring box	\$12.29
	<b><i>Trailers - V-bottom type and/or semi-dump</i></b>	
92.601	Under 11 ½ cubic yard capacity	\$13.72
92.602	11 ½ cubic yard capacity	\$16.16
92.603	14 cubic yard capacity	\$16.69
92.604	17 ½ cubic yard capacity	\$21.64
92.605	25 cubic yard capacity	\$25.03
<b>93.000</b>	<b>AERIAL EQUIPMENT - (not including truck)</b>	
93.100	Ladder and attachment	\$1.74
	<b><i>Tower and/or platform (hydraulic)</i></b>	
93.200	Under 34' height (ground to platform)	\$4.16
93.300	34' minimum height (ground to platform)	\$5.44
93.400	50' minimum height (ground to platform)	\$5.86
93.600	Platform, lift (self-propelled at job site)	\$73.93
<b>94.000</b>	<b>MUD JACKS</b>	
94.200	Pavement - (without truck)	\$58.76
<b>95.000</b>	<b>LIFTS</b>	
95.200	Winch	\$4.10

<i>MDOT Equipment Code</i>	<i>Equipment Description</i>	<i>Rate per Hour</i>
95.300	Industrial fork lift truck	\$96.06
95.350	Hydraulic or electric tailgate lift (minimum lift – 1,000 lbs.)	\$2.12
95.370	Electric crane - 360 degree rotation	\$14.40
95.400	Lifting equipment (hydraulic) truck mounted - not including truck - boom raises and lowers and swings 360 degrees	\$11.58
95.500	Monorail and electric hoist (truck mounted - not including truck)	\$20.65
95.550	Sign trailer	\$20.34
<b>96.000</b>	<b>MISCELLANEOUS EQUIPMENT</b>	
96.001	Cellular phone	\$0.72
96.002	Skull cracker (iron ball)	\$4.63
96.003	Hammer (gasoline)	\$8.59
96.004	"loadometer" - each	\$5.19
96.005	Portable electric sander - disc or belt type	\$2.74
96.006	Radio - two way system each mobile unit	\$0.34
96.007	Wheel loader weighing system	\$2.48
96.008	Distance measuring instrument	\$0.06
96.009	Traffic system analyzer	\$0.29
96.010	Traffic counter	\$0.20
96.011	Ventilator, remote gas monitor, & winch with full body harness	\$0.77
96.012	Welder, electric or gas	\$4.56
96.013	Back pack blower	\$1.63
96.014	Air-broom (powered)	\$5.71
96.015	Portable electric drill or hammer	\$2.37
96.016	Portable electric saw	\$6.69
96.017	Density kit (complete unit)	\$6.88
96.018	Sign washer, port. (brush type) engine driven	\$25.11
96.019	Flasher panel, portable (minimum 2' x 4') truck mounted	\$0.48
96.020	Flasher panel with sequential flashing lights that produce a traveling arrow effect - electrically powered (minimum size 4'x 8')	\$3.39
	<b><i>Electric generators - portable</i></b>	
96.021	AC rating 999 watts of less	\$5.75
96.022	AC rating 1,000 watts minimum	\$6.67
96.023	AC rating 2,500 watts minimum	\$1.53

<i>MDOT Equipment Code</i>	<i>Equipment Description</i>	<i>Rate per Hour</i>
96.024	AC rating 10,000 watts minimum	\$10.90
96.025	AC rating 30,000 watts minimum	\$18.09
96.026	AC rating 70,000 watts minimum	\$15.33
96.030	Ultrasonic globe washer	\$2.38
96.040	Changeable message sign, portable	\$21.15
96.041	Rear observation camera system	\$0.38
96.042	Portable torque wrench, with computer controller (battery powered)	\$2.69
96.043	Signal conflict monitor tester	\$5.33
96.045	Portable light tower	\$2.97
96.046	Portable traffic signal	\$6.17
96.050	Vehicle mounted impact attenuator	\$3.19
96.051	Trailer mounted impact attenuator (including trailer)	\$19.90
96.060	Mats - for crane or tractor	\$0.91
96.070	Cold water pressure washer	\$2.44
96.071	Hot water pressure washer	\$23.16
96.100	Outboard motor	\$1.83
96.102	Pole trailer	\$6.16
96.105	Landscape trailer (includes tool boxes)	\$2.54
96.106	Traffic Cone Setter, Platform, (hitch mounted)	\$2.48
96.107	GPS Locator – truck mounted, each mobile unit	\$0.86
96.108	Radar unit hand held	\$1.53
96.109	GPS handheld unit	\$3.80
96.110	TV sewer inspection unit (truck mounted, including truck)	\$72.98
96.111	TV sewer inspection unit (portable)	\$12.97
96.112	Portable sign retro-reflectometer	\$7.28
96.115	Nuclear moisture-density gauges	\$6.49
96.118	Utility locator	\$2.88
96.120	Floor scrubber and waxer	\$0.85
96.130	Slope & geometric data acquisition system	\$3.11
96.145	Bridge scaffolding hangers	\$9.23
96.150	Trench box	\$5.85
96.151	Manhole box	\$6.21



<b>MDOT Equipment Code</b>	<b>Equipment Description</b>	<b>Rate per Hour</b>
96.160	Portable space heater	\$4.28
96.170	Emergency Traffic Control Trailer (includes dedicated generator, halogen lights and traffic control barricades)	\$103.96
96.171	Manhole/CB Restoration Trailer	\$158.23
96.180	Speed Monitoring Trailer	\$2.17
	<b><i>Hydraulic power unit (portable) including tools &amp; attach.</i></b>	
96.200	Under 2,000 P.S.I.	\$2.50
96.201	2,000 P.S.I. minimum	\$5.26
96.202	Hydraulic post straightener	\$0.74
96.205	Hydraulic or pneumatic pole tamper	\$6.74
96.206	Hydraulic concrete breaker	\$7.35
96.210	Hydraulic cutoff saw - abrasive wheel	\$9.66
96.250	Mobile hydraulic hammer - complete integral unit	\$69.10
96.270	Hydraulic drop hammer attachment to tractor – 1,000 lbs. minimum striker weight	\$13.69
96.280	Hydraulic impact wrench with hoses	\$5.57
96.290	Fastening tool for stud anchors and nails	\$4.32
	<b><i>Sandblast machines without compressors</i></b>	
96.300	Under 150 lbs.	\$7.66
96.301	150 lbs. minimum capacity	\$10.45
96.302	300 lbs. minimum capacity	\$16.89
96.303	600 lbs. minimum capacity	\$23.64
96.401	Pontoon boat	\$5.99
96.405	Row boat 7' minimum	\$4.56
96.408	Snow mobile	\$11.88
96.409	Track setter	\$13.87
96.415	All terrain utility vehicle w/pickup bed	\$12.97
	<b><i>Axle dollies - to convert semi-trailer to full trailer</i></b>	
96.420	Single axle	\$3.19
96.421	Tandem axle	\$3.04
	<b><i>Flasher - barricades - complete unit with lights and generator, trailer mounted (classified by rated capacity of generators)</i></b>	
96.501	AC rating 999 watts or less	\$8.91

<i>MDOT Equipment Code</i>	<i>Equipment Description</i>	<i>Rate per Hour</i>
96.502	AC rating 1,000 watts minimum	\$9.81
96.503	AC rating 2,500 watts minimum	\$15.95
96.504	AC rating 10,000 watts minimum	\$16.67
96.601	Pile hammer (diesel) complete with leads, guides drive, cap, etc.	\$47.36
96.610	Hydraulic vibratory pile driver/extractor	\$43.65
96.650	Air or hydraulic demolition impact hammer attach. (including tool)	\$32.83
96.701	Drop hammer - 2,000 lbs. minimum weight	\$4.74
96.750	Halogen arrow bar (roof mounted)	\$0.06
96.755	Temperature sensor, truck mounted, relates road temperature to air temperature	\$0.12
96.800	Barricade, flashing arrow, trailer mounted-DC	\$6.18
96.900	Barricade, flashing arrow, truck mounted-DC	\$1.06

AERIAL EQUIPMENT - (not including truck)	20
.....	20
Aerifier .....	18
AGGREGATE EQUIPMENT .....	19
Air-broom (powered) .....	21
Axle dollies .....	23
Barricades, Flasher .....	23
Bituminous curb laying machine.....	3
BITUMINOUS DISTRIBUTORS .....	2
Bituminous Kettles.....	2
Bituminous Mixers.....	3
Bituminous spreader.....	3
Bituminous supply tank.....	4
Bituminous tool Heater .....	3
Blade control (automatic) attachment .....	5
Blade rake with brush guard (attachment to bulldozer blade) .....	5
Blade shock absorber.....	6
Boat, Pontoon & Row .....	23
Boring unit.....	12
Bridge abutment forms.....	4
Bridge scaffolding hangers.....	22
Broom, Self-propelled power .....	14
Broom, Tractor or loader attachment .....	14
Brooms, Towed .....	14
Brush or tree chipper .....	14
Brush saw .....	13
Bulldozer blades.....	5
Bus.....	1
Buzz saw .....	13
Camper Body.....	2
Car .....	1
Catch Basin Cleaners.....	8
Cellular phone .....	20
CEMENT MIXERS .....	4
Chain saws.....	13
Chipper, Brush .....	14
Chipper, brush or tree.....	14
Compactor, Vibratory.....	18
Compost turner .....	15
COMPRESSORS .....	17
Concrete core drill unit.....	12
Concrete Grooving Machine .....	4
Concrete Pavement Saw .....	4
Crushing plant .....	19
Cutter, Stump .....	14
Density kit .....	21
Distance measuring instrument .....	21
Ditcher - Trenchers.....	5
Drawn Graders .....	6
Driver, Fence or sign post .....	12
Drop hammer.....	24
Earth Haulers.....	7
Eductors.....	8

Electric generators - portable .....	21
Excavators.....	6
Extendable Boom (non-hydraulic).....	7
FARM EQUIPMENT .....	11
Flasher - barricades .....	23
Flasher panel .....	21
Generators, Electric - portable .....	21
Grade-slope-shoulder cutter .....	6
Hammer (gasoline).....	20
Heater, Bituminous Materials .....	3
Heater, Bituminous tool.....	3
Heater, Surface.....	3
Heaters, Tank Car .....	3
Hydraulic impact wrench .....	23
Hydraulic platform for post(digging-driving- pulling).....	12
Hydraulic post straightener .....	23
Hydraulic power unit .....	22
Hydraulic wrist.....	7
Hydro seeder .....	11
Landscape trailer.....	22
Lawn mowers.....	13
LIFTS .....	20
<i>Loader, Tractor shovel</i> .....	7
LOADERS - conveyor type .....	16
Maintainers .....	6
Manhole box .....	22
MISCELLANEOUS EQUIPMENT .....	20
Mixer, Transit .....	4
MIXERS - SOILS .....	18
Motor Graders .....	5
MOWING EQUIPMENT .....	12
MUD JACKS .....	20
PAINT EQUIPMENT.....	16
Pallet Lifter .....	7
Pavement markers .....	16
Phone, Cellular.....	20
Pole trailer .....	22
Pontoon boat .....	23
PORTABLE TRUCK SCALES.....	4
Post hole digger.....	12
Power earth auger.....	12
Power rock or earth drill - vehicle mounted.....	12
Puller, Fence or sign post.....	12
PUMPS .....	17
Radio - two way system each mobile unit .....	21
Rakes, Hay .....	12
Rakes, Stone.....	12
Refuse collector .....	15
Reversible snow plows.....	9
Road magnet .....	15
Rock ripper.....	5
Roller, Heated asphalt.....	3
ROLLERS.....	17

Roto-wing..... 9  
Sandblast machines without compressors ..... 23  
Saw, Brush ..... 13  
Saw, Reciprocating..... 13  
Saws, Chain ..... 13  
Scarifier ..... 5  
Scraper, Underbody..... 7  
Screed Vibrating..... 4  
Screening plant ..... 19  
Sewer Cleaning Equipment ..... 8  
Sign washer, port. .... 21  
Snow bucket ..... 16  
Snow mobile..... 23  
Snow plow wings ..... 9  
Snow Plows ..... 9  
Snow wing attachment ..... 6  
Spade, Tree..... 14  
Spray boom attachment ..... 15  
SPRAYING EQUIPMENT ..... 15  
Spreader, Mulch ..... 11  
Spreaders - Aggregate ..... 19  
Spreaders, Tailgate type ..... 9

Spreaders, Towed type .....9  
Steam Thawing Equipment .....8  
STREET CLEANING EQUIPMENT.....14  
Stump cutter .....14  
Sweepers, Street.....14  
Tanks - water, brine, or emulsion only .....19  
TRACTORS - Wheel or crawler.....11  
Traffic counter.....21  
TRAILERS .....1  
TRAILERS (Flat Bottom Type) .....1  
Trailers - V-bottom type and/or semi-dump ....20  
TREE EQUIPMENT.....13  
Tree spade .....14  
Trench box .....22  
TRUCK SCALES, Portable.....4  
Trucks .....1  
Underbody Scraper .....7  
Utility locator .....22  
Vacuum type litter picker.....15  
Vibrator, Concrete.....4  
Welder, electric or gas .....21  
Windrow eliminator .....6