

2020 MIHP Coordinator Webinar



MIHP Team

Dan Thompson

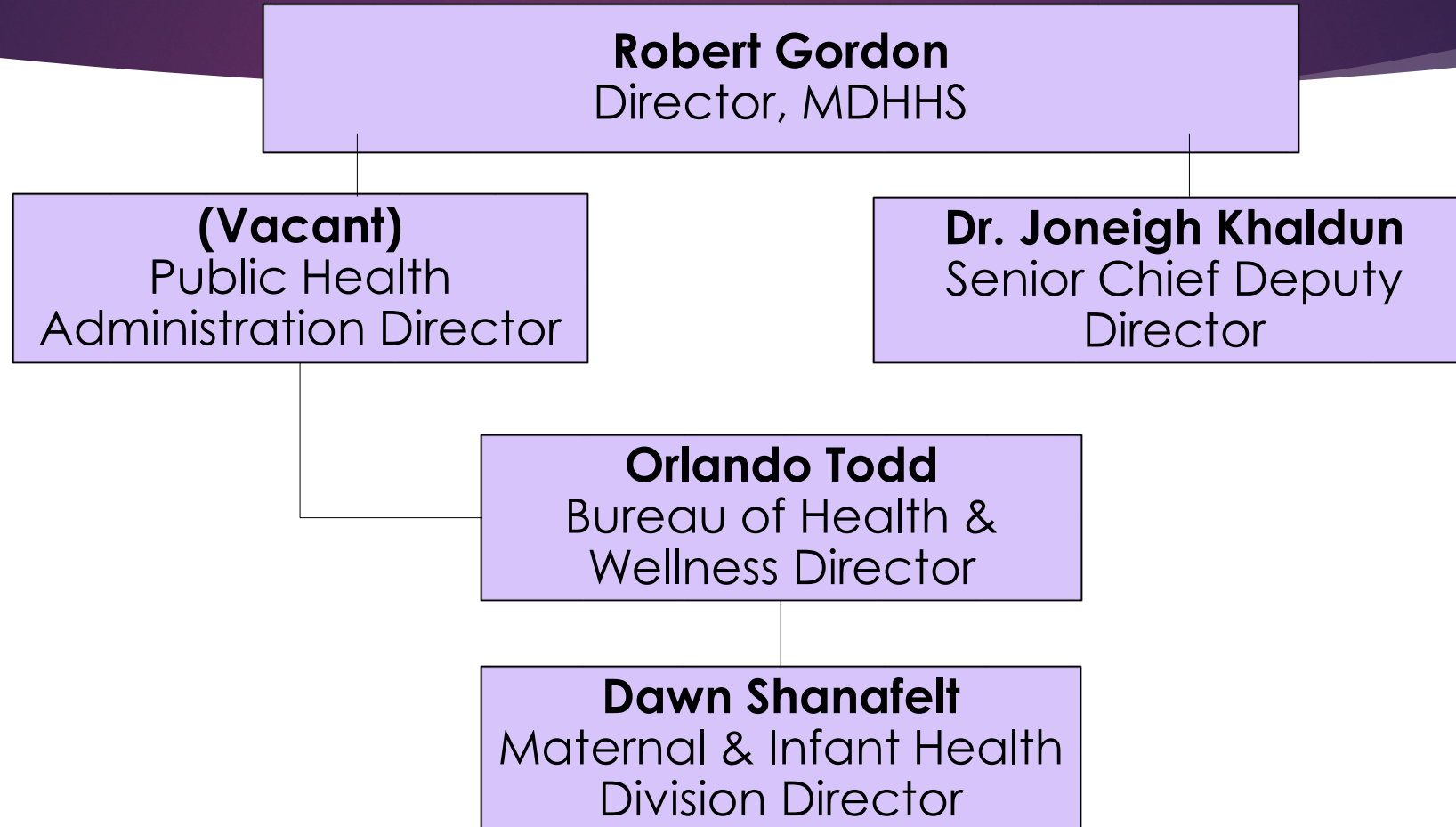
Manager, Maternal Infant Health Unit

- Suzette Burkitt-Wesolek, QI Specialist
- Joni Detwiler, Public Health Consultant
- Connie Frantz, Department Analyst
- Maria Garcia, Technician
- Chelsea Low, Public Health Consultant
- Jenn Music, Section Secretary
- Sarah Ostyn, Data & Policy Fellow
- Cherie Ross, Public Health Consultant

MIHP Reviewers

- Pat Fralick
- Deanna Kelly
- Kathy Schoenberger
- Sherry Zietz

MDHHS Organizational Chart



Topics for Discussion

- COVID-19
- Home Visiting Advisory Committee
- MIHP Ongoing Initiatives

COVID-19

- State of Michigan staff furloughs
- MIHP staff volunteer duties
- Agency challenges
- What the future holds

Home Visiting Advisory Committee

- MIHP representatives
 - Melissa Hahn, NW Mich.
 - Joanne Hoganson, Kent Co.
 - Suzanne Kalchik, Sparrow
 - Darcy Lokers, DHD 10
- Vision and goals
- Progress to date

MIHP Ongoing Initiatives

- Care Connect 360
- Continuing website enhancements
- Mich. Community Collaboration Project (Collective)
- SE Michigan participant survey

SE Michigan Participant Survey

- MDHHS and the UM Youth Policy Lab partnered to survey MIHP-eligible women in Region 10
 - Macomb, Oakland, Wayne counties
- Fielded August 2019-February 2020
 - \$10 incentives for completed surveys

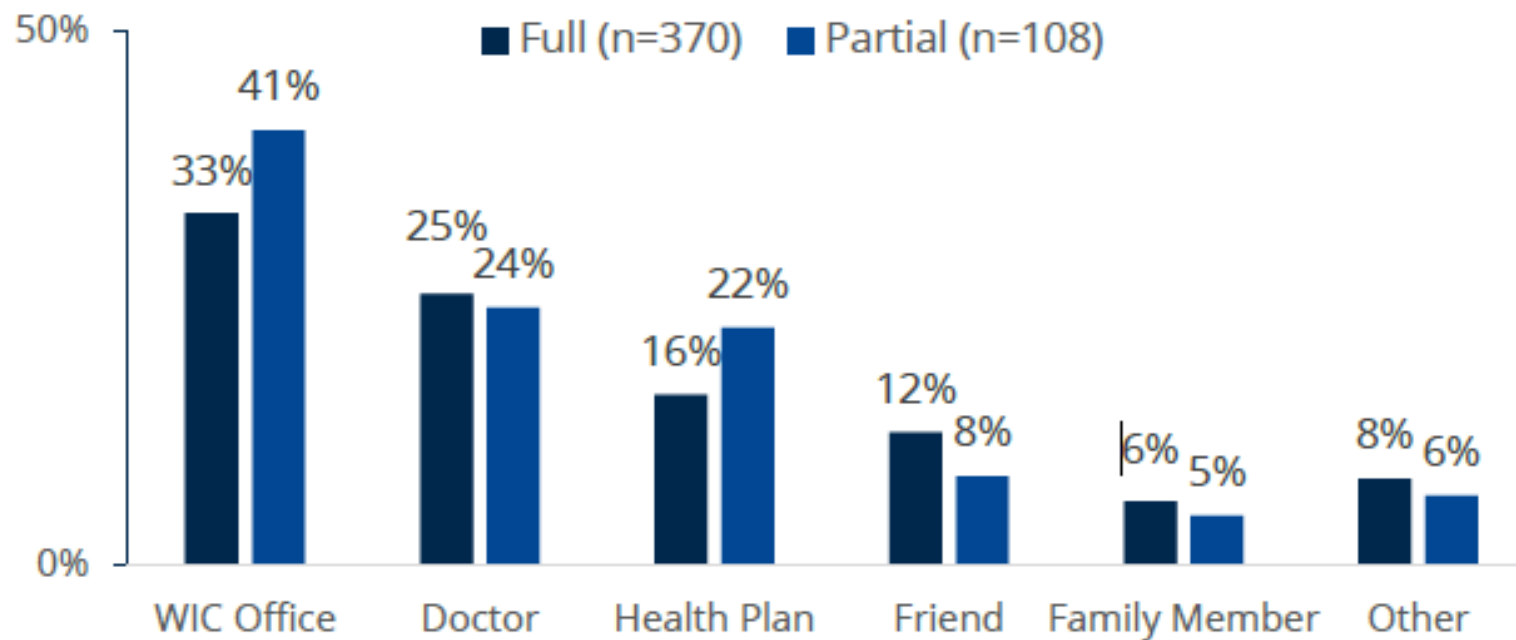
SE Michigan Participant Survey

3 targeted groups:

- MIHP full participants: Enrolled during pregnancy, 3+ home visits
- MIHP Partial participants: Fewer than 3 home visits
- Non-participants: eligible for MIHP but unenrolled

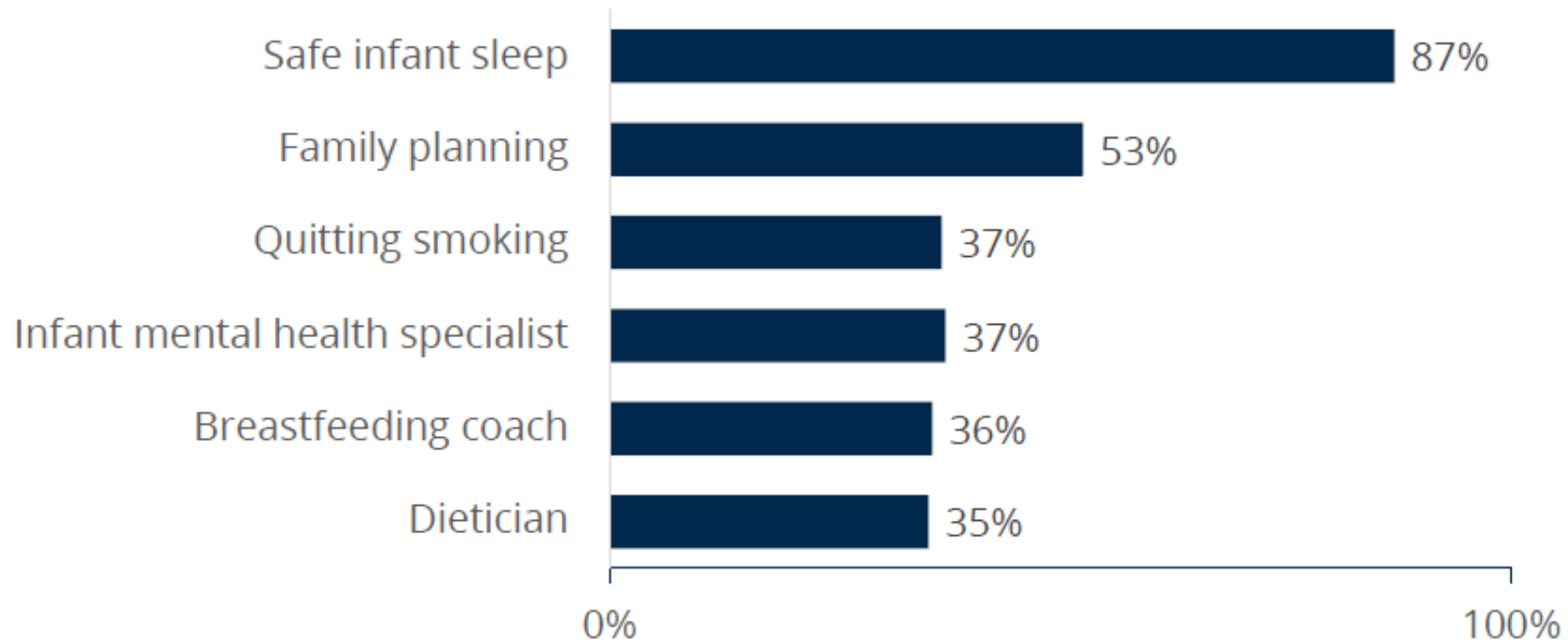
SE Michigan Participant Survey

HOW DID YOU FIRST HEAR ABOUT MIHP?

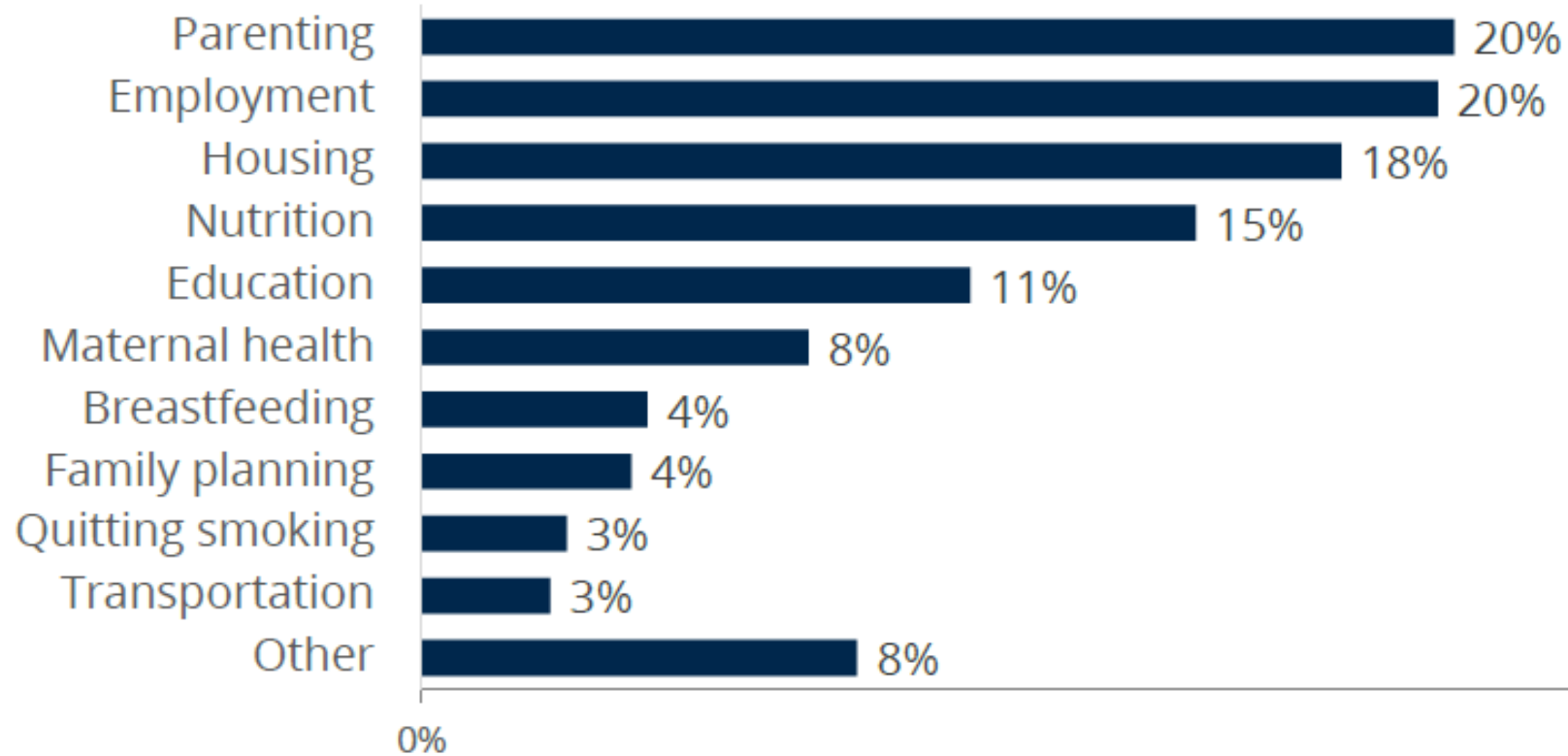


SE Michigan Participant Survey

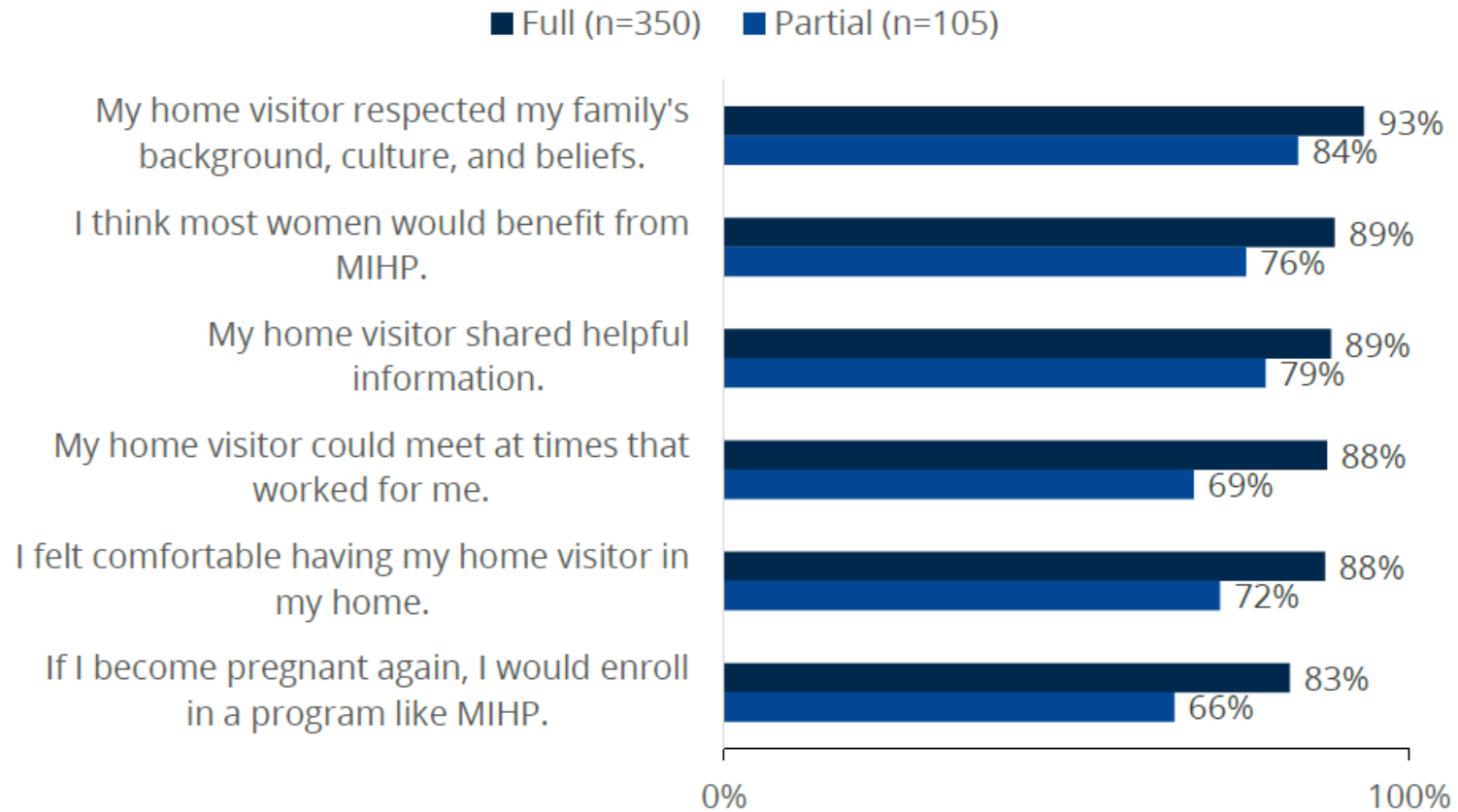
CHECK ALL THAT APPLY: DID YOUR HOME VISITOR PROVIDE THE FOLLOWING INFORMATION OR CONNECT YOU TO THE FOLLOWING SUPPORTS? (N=478)



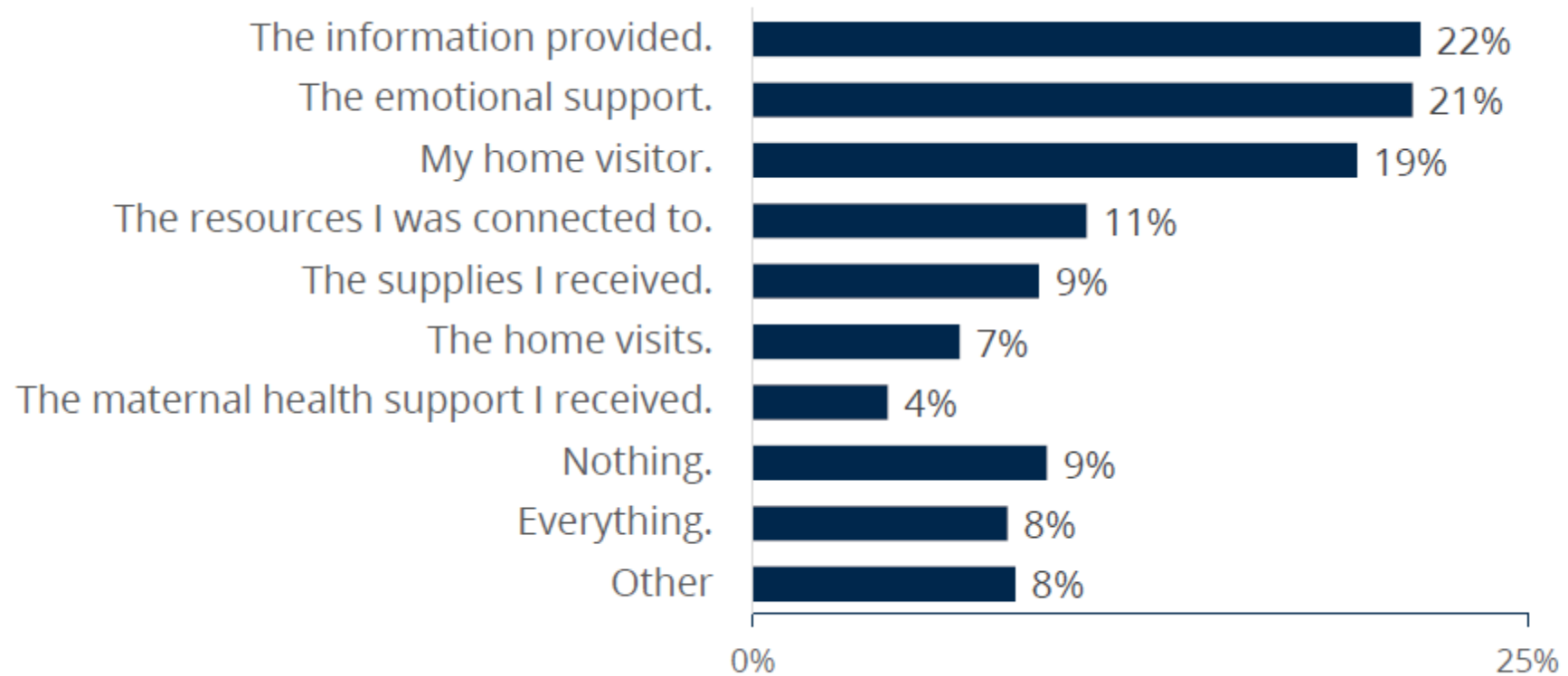
SE Michigan Participant Survey



SE Michigan Participant Survey

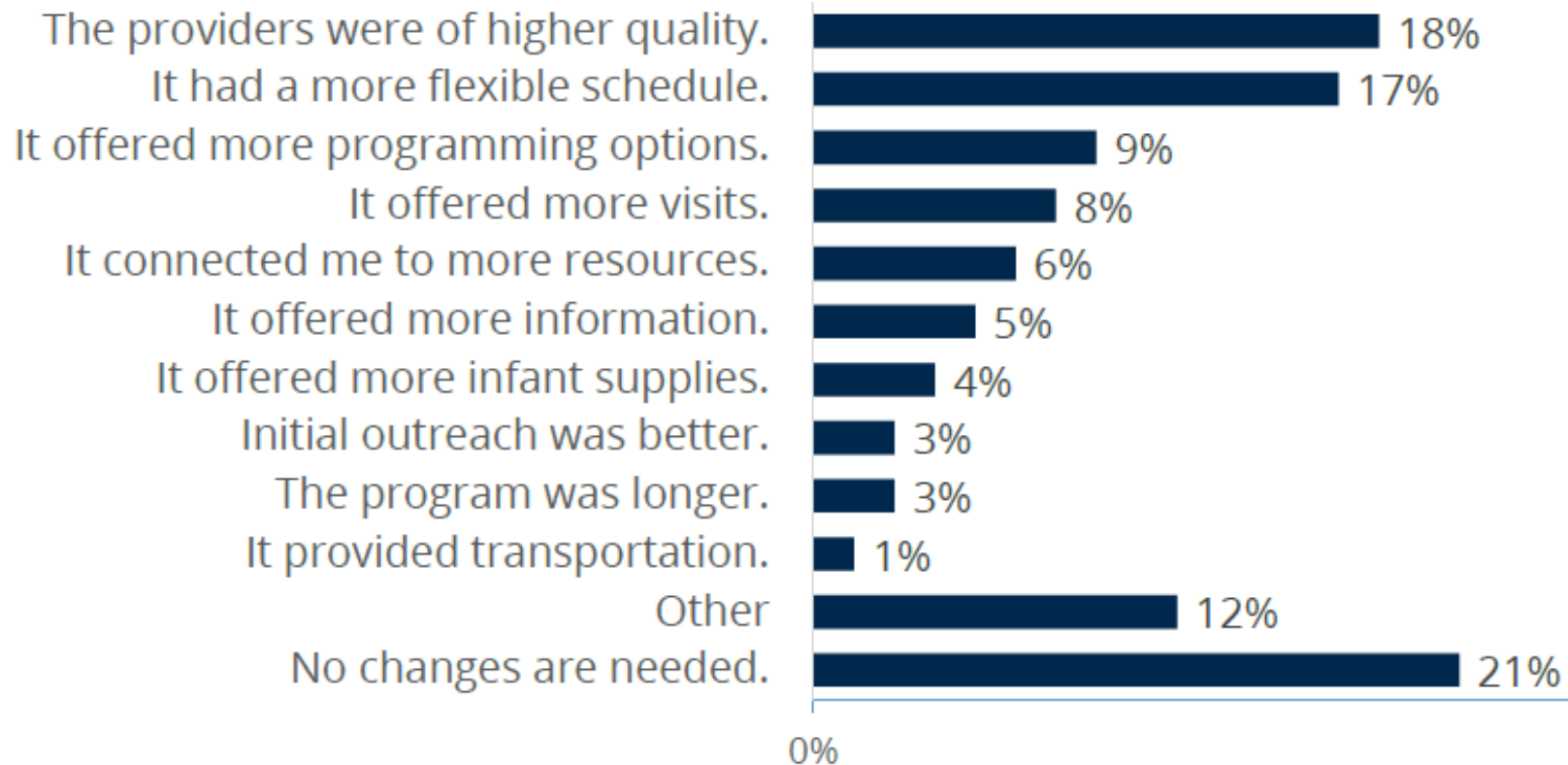


SE Michigan Participant Survey



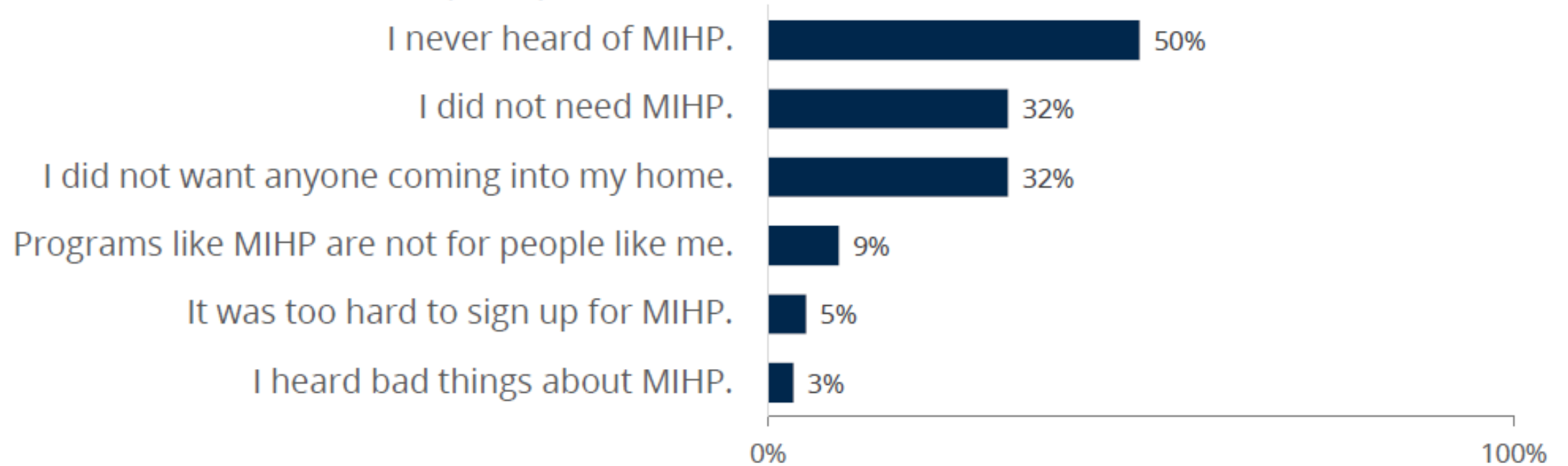
SE Michigan Participant Survey

MIHP WOULD BE BETTER IF... (n=78)



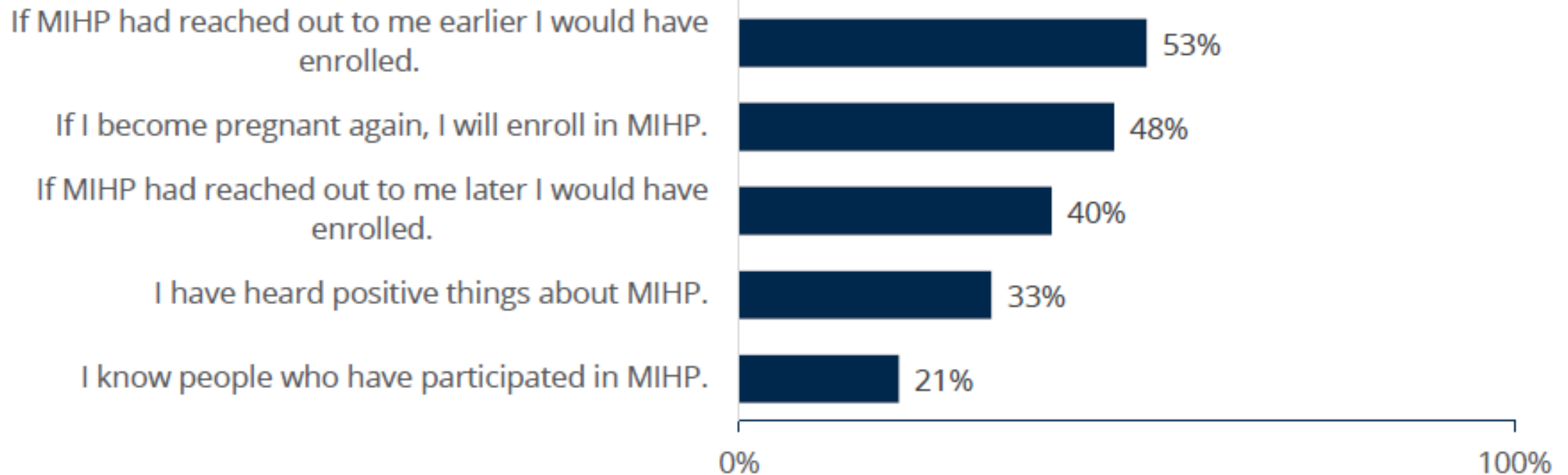
SE Michigan Participant Survey

REASONS FOR NOT ENROLLING (n=295):



SE Michigan Participant Survey

NON-PARTICIPANT VIEWS OF MIHP (n=310)



At the University of Michigan Youth Policy Lab, we are surrounded by some of the nation's leading experts on nearly every social challenge and, as a public institution, we are committed to applying that knowledge to the public good.

We are always looking for new opportunities to increase measurable impact. For more information, or to discuss a new project idea, contact us: www.youthpolicylab.umich.edu

Robin Jacob | rjacob@umich.edu

Megan Foster Friedman | mfosterf@umich.edu

*Thank you for
all you do for
moms, babies,
and their
families!*

