

# 2019 MIHP Coordinator Training



# MIHP Team

## Dan Thompson

**Acting Manager, Perinatal & Infant Health Section**

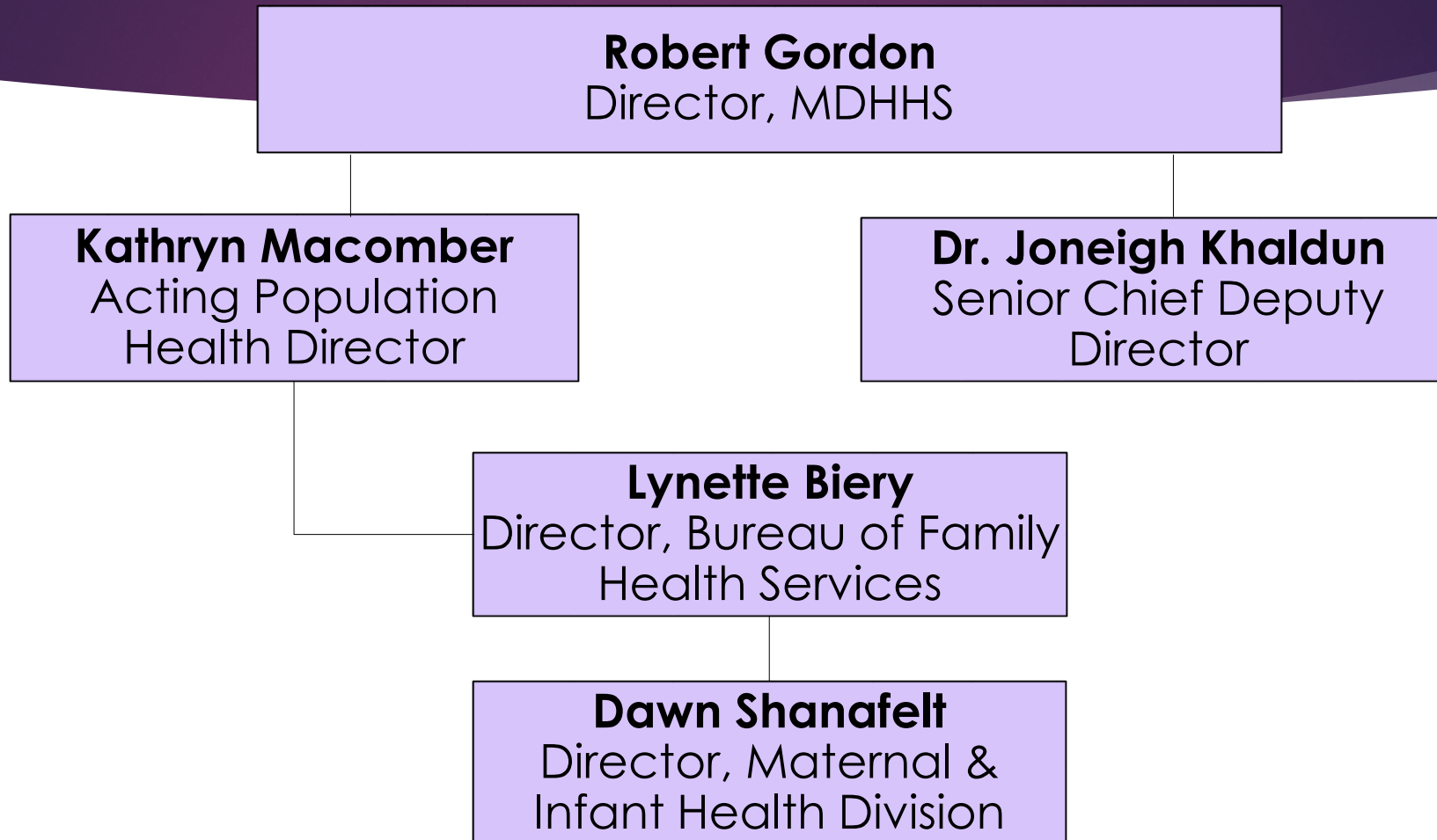
**Manager, Maternal Infant Health Unit**

- Ingrid Davis, Public Health Consultant
- Joni Detwiler, Public Health Consultant
- Chelsea Low, Public Health Consultant
- Cherie Ross, Public Health Consultant
- Connie Frantz, Department Analyst
- Suzette Burkitt-Wesolek, QI Specialist
- Maria Garcia, Technician
- Deb Marciniak, Quality Assurance Specialist
- Christy Livingston, Unit Secretary

# MIHP Reviewers

- Dena Austin
- Pat Fralick
- Sharifa Harvey
- Deanna Kelly
- Kathy Schoenberger
- Sherry Zietz
- Jennifer Murray

# MDHHS Organizational Chart

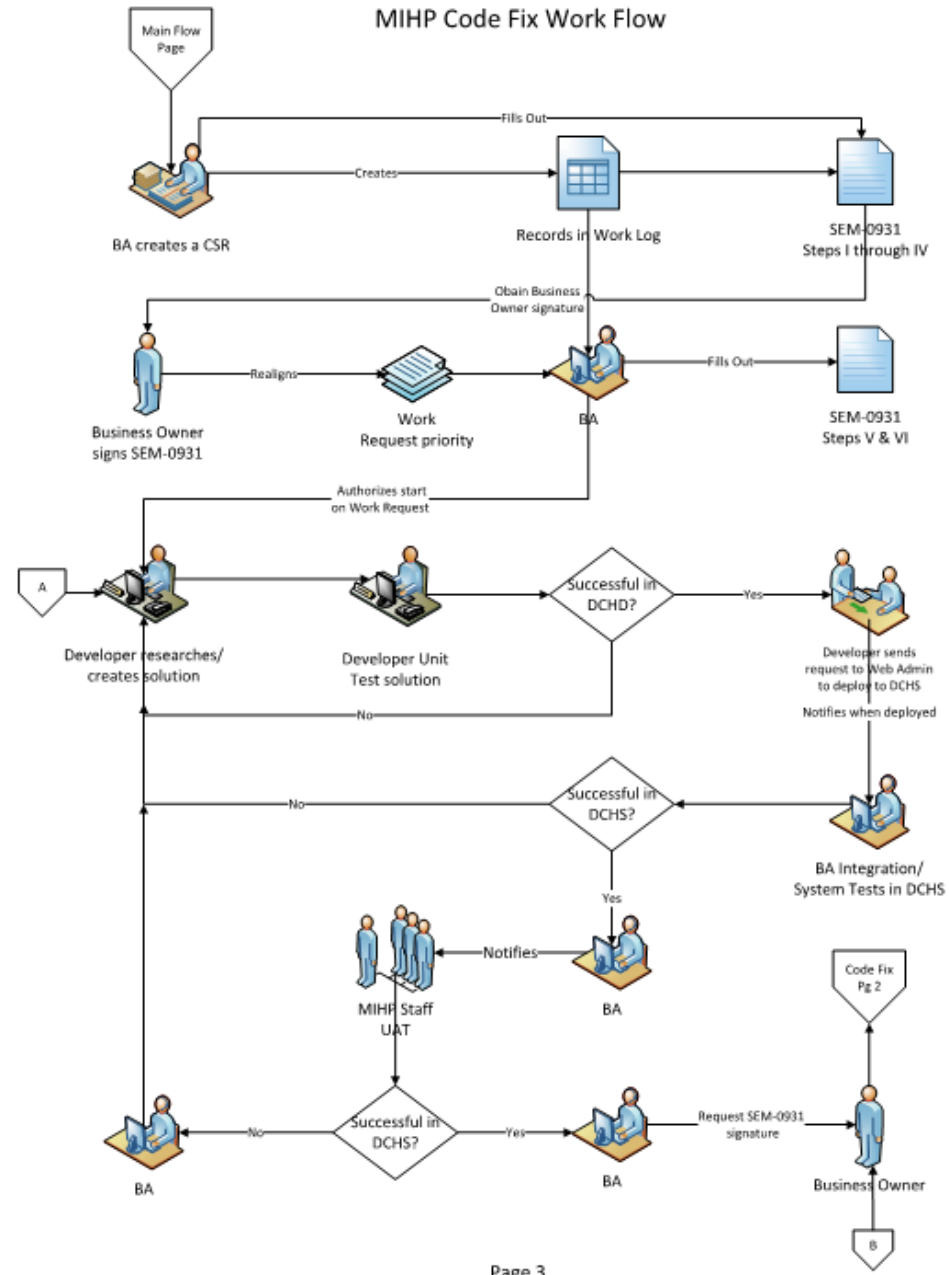


# MIHP Application Revision Process

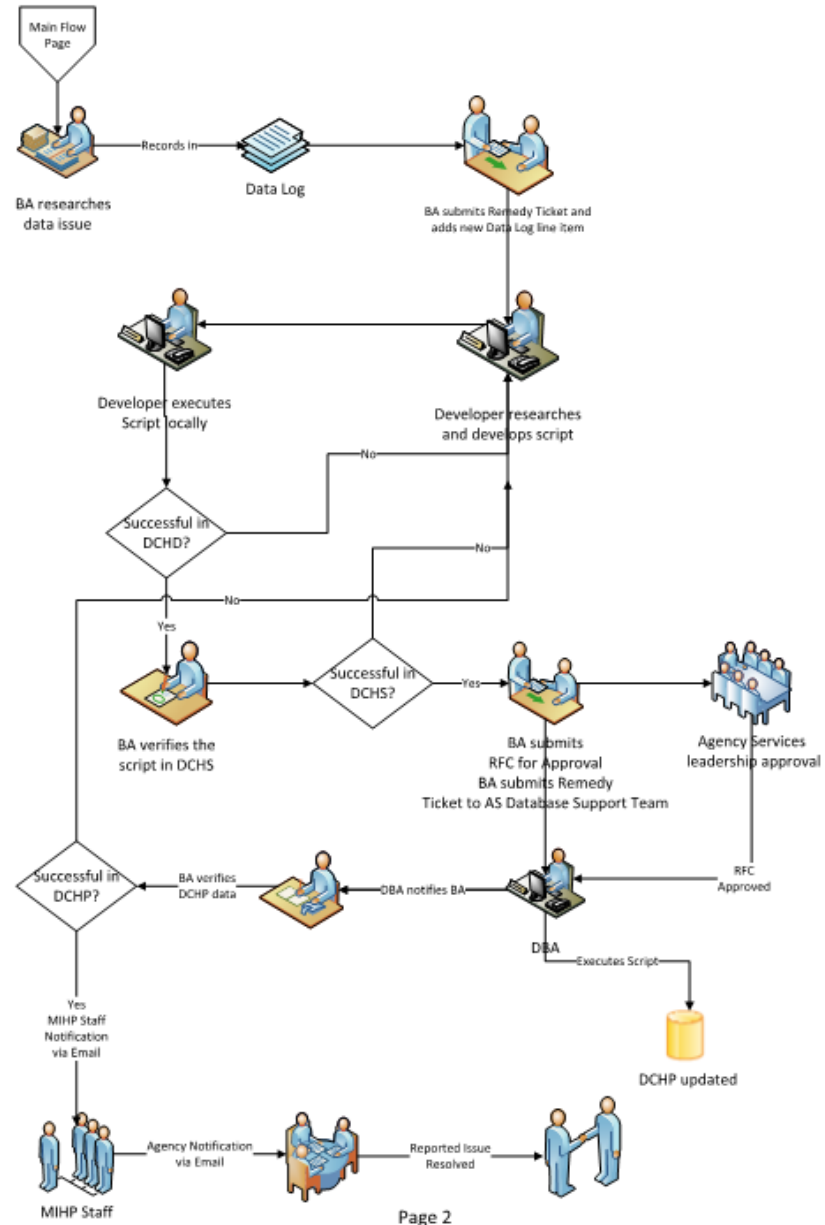
## **Strategic Integration Administration** **(formerly Business Integration Center)**

*The Strategic Integration Administration is the entry point where business and technology meet to coordinate and align projects across MDHHS.*

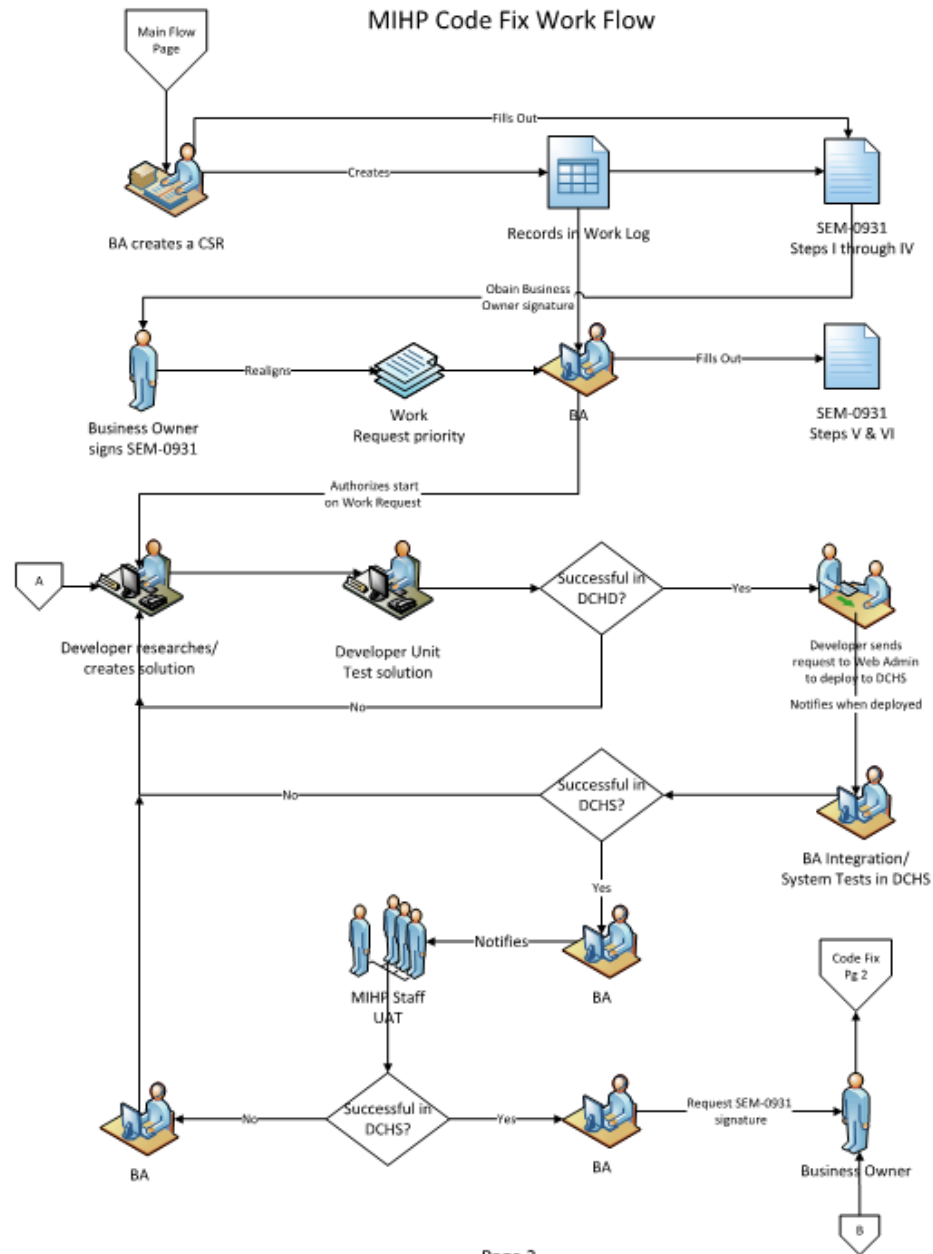
### MIHP Code Fix Work Flow



# MIHP Data Fix Work Flow

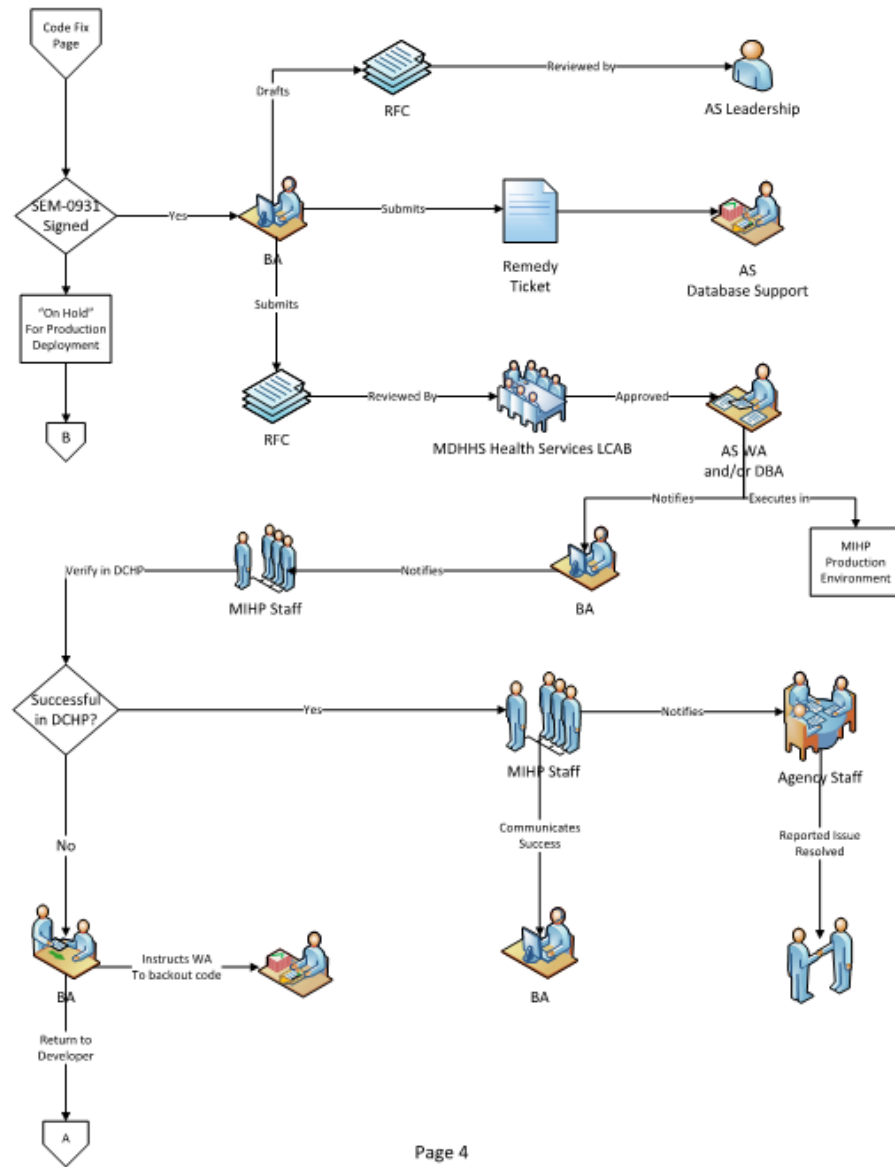


### MIHP Code Fix Work Flow

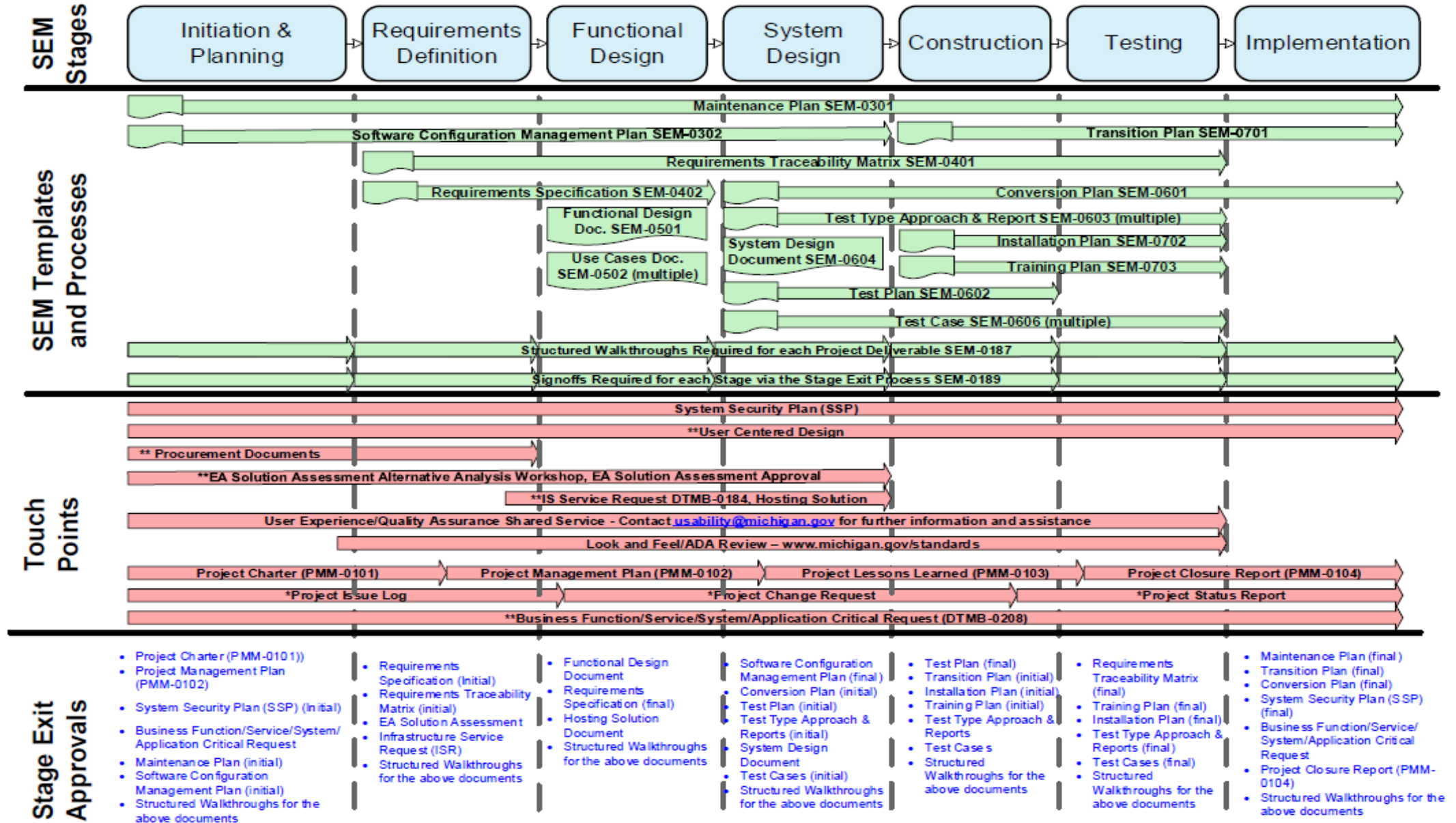




## MIHP Code Fix Work Flow (Continued)



# Systems Engineering Methodology (SEM) Overview



## MIHP Application Revision Process, cont'd

- Maternal Discharge Summary
- Infant Discharge Summary
- Maternal Risk Identifier
- Infant Risk Identifier

# Form and Document Process

- January 1 – Revisions or Updates\*
- June 1 – Revisions or Updates\*

\*Unless critical information arises

## Significant Form/Process Upgrades: 2018-2019

- Universal MIHP Support and Consultation
- Personnel Roster
- Plans of Care
- Professional Visit Progress notes (PVPNs)
- **MIHP Operations Guide**

## Significant Form/Process Upgrades: 2018-2019, cont'd

- Triple Lock Requirement
- Childbirth Education and Parenting Education Companion Guide
- Field Confidentiality Guidelines
- ASQ Companion Guide

# Certification Updates



## Pre-Review Documents

- Before emailing pre-review documents, make sure everything matches the MHP Cycle 7 Required Pre-Review Documents
- Email in advance of the 14-day time requirement
- Have 1-2 staff members double check that correct documents are included in the email
- Send entire LARA verification including actions



# Certification Information

- Updated Certification tool for Cycle 7 includes mostly reference changes and language to match the Operation Guide, or language clarifications.
- MIHP Companion Guides are referenced throughout the updated Certification tool.

# Certification Information and Changes

## Indicator # 6 – Roster

- MDHHS records indicate that provider submitted updated rosters to MDHHS within 10 business days of becoming a new MIHP provider or when a staffing change has occurred.

## Certification Information and Changes, cont'd

### Indicator #7 – Trainings

- Infant Safe Sleep for Professionals Working with Families (formerly Infant Safe Sleep for Health Care Providers)
- Infant Safe Sleep: Helping Families Practice Safe Sleep Training (as of 3.1.19)

## Certification Information and Changes, cont'd

### Indicator #9 – Professional Documentation Clarification

- All MIHP staff conducting professional visits meet all MIHP professional requirements as outlined in the Medicaid Provider Manual per:
  - Review of license, registration and/or certification;
  - LARA verification of the status of license, registration, and/or certification;
  - Resumes reflecting experience for staff hired after the last review.

## Certification Information and Changes, cont'd

### Indicator #12 – PHI Updated Protocol

(Updated protocol will be required immediately but not cited until 6-1-19)

- ▶ A triple-locking system (three locked mechanisms between records and people who have not signed the staff confidentiality agreement) is used in office to secure MIHP records.

## Certification Information and Changes, cont'd

### Indicator #12 – PHI Updated Protocol, cont'd

- ▶ Transporting of hard copy and electronic beneficiary records meet requirements documented in the PHI Companion Guide and include:

## Certification Information and Changes, cont'd

- Records with PHI are never left in a vehicle unattended, unless secured in a locking container within the locked vehicle.
- Records with PHI are secured in a locking container, in the trunk or an inconspicuous location of a locked vehicle.

## Certification Information and Changes, cont'd

- Requirement is to return records to the agency's main office by close of business on the day of travel.
  - When not practical or possible to return records to the agency office, records are maintained securely in a locking container in a hotel room or a personal residence with locked exterior doors and windows until they can be safely returned to the agency.



## Certification Information and Changes, cont'd

- A triple-locking system is used in staff homes to assure there is no inadvertent access to PHI by unauthorized persons.
- All staff must have a current copy of field guidelines immediately but not cited until 6-1-19

## Certification Information and Changes, cont'd

### **Indicator #34 – Monthly MHP Communication Updated Protocol**

(Updated protocol will be required immediately but not cited until 6-1-19)

▶ Protocol describes:

## Certification Information and Changes, cont'd

- Procedure for informing MHPs when:
  - Their members enroll in MIHP
  - Outcome of every referral received by the MHP
  - Implementation of a physician order
  - MIHP team exception approval

## Certification Information and Changes, cont'd

### Indicator #34 – Monthly MHP Communication Updated Protocol, cont'd

- The frequency of notice and the form to be used.
- How information is confidentially shared with the MHP.

## Certification Information and Changes, cont'd

### Indicator #43 – Plan of Care 1 Updated Protocol

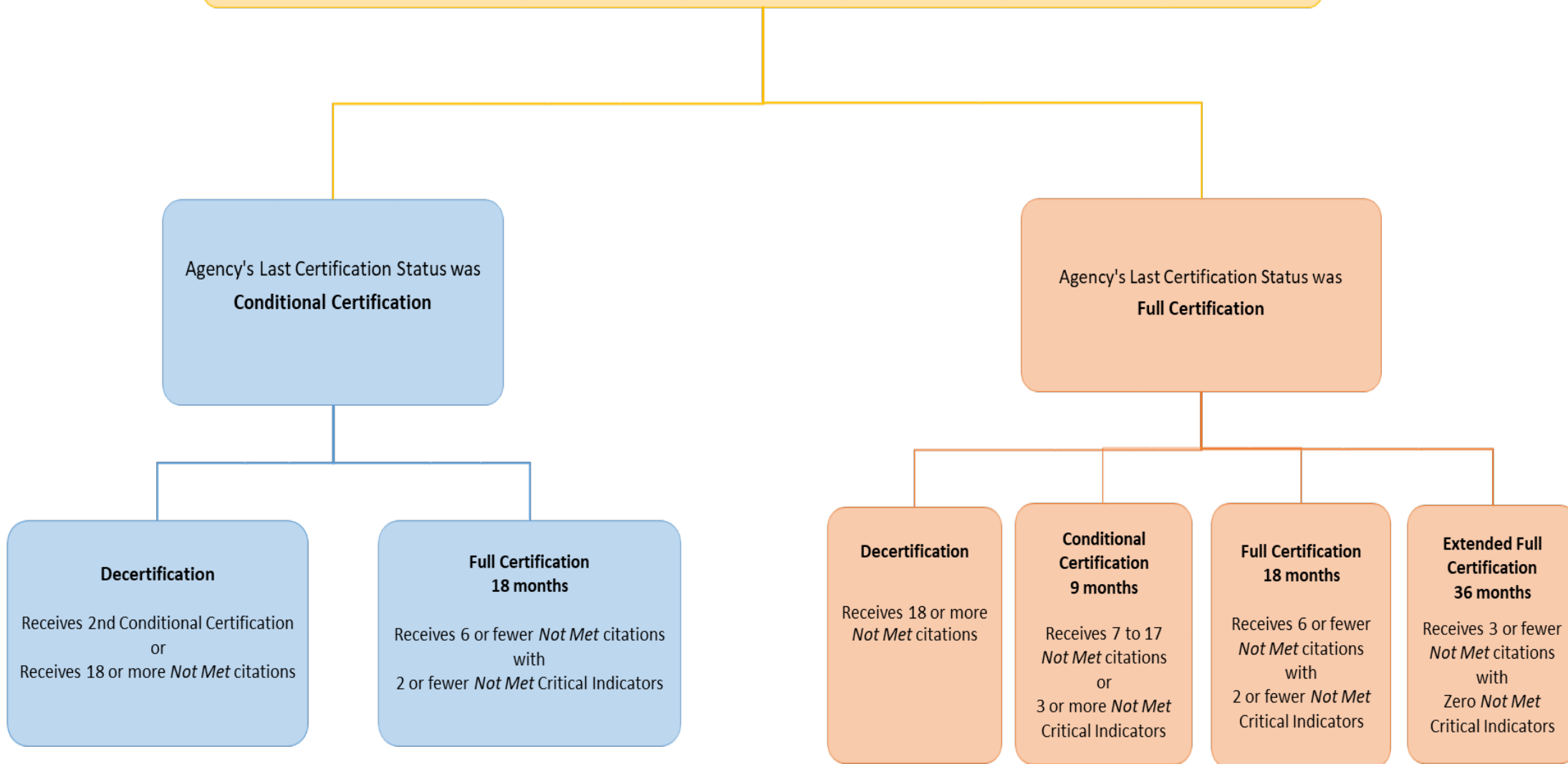
(Updated protocols will be required immediately but not cited until 6-1-19)

► Protocol describes:

- The requirement to discuss lead exposure prevention in pregnancy and provide the CDC fact sheet to beneficiary.

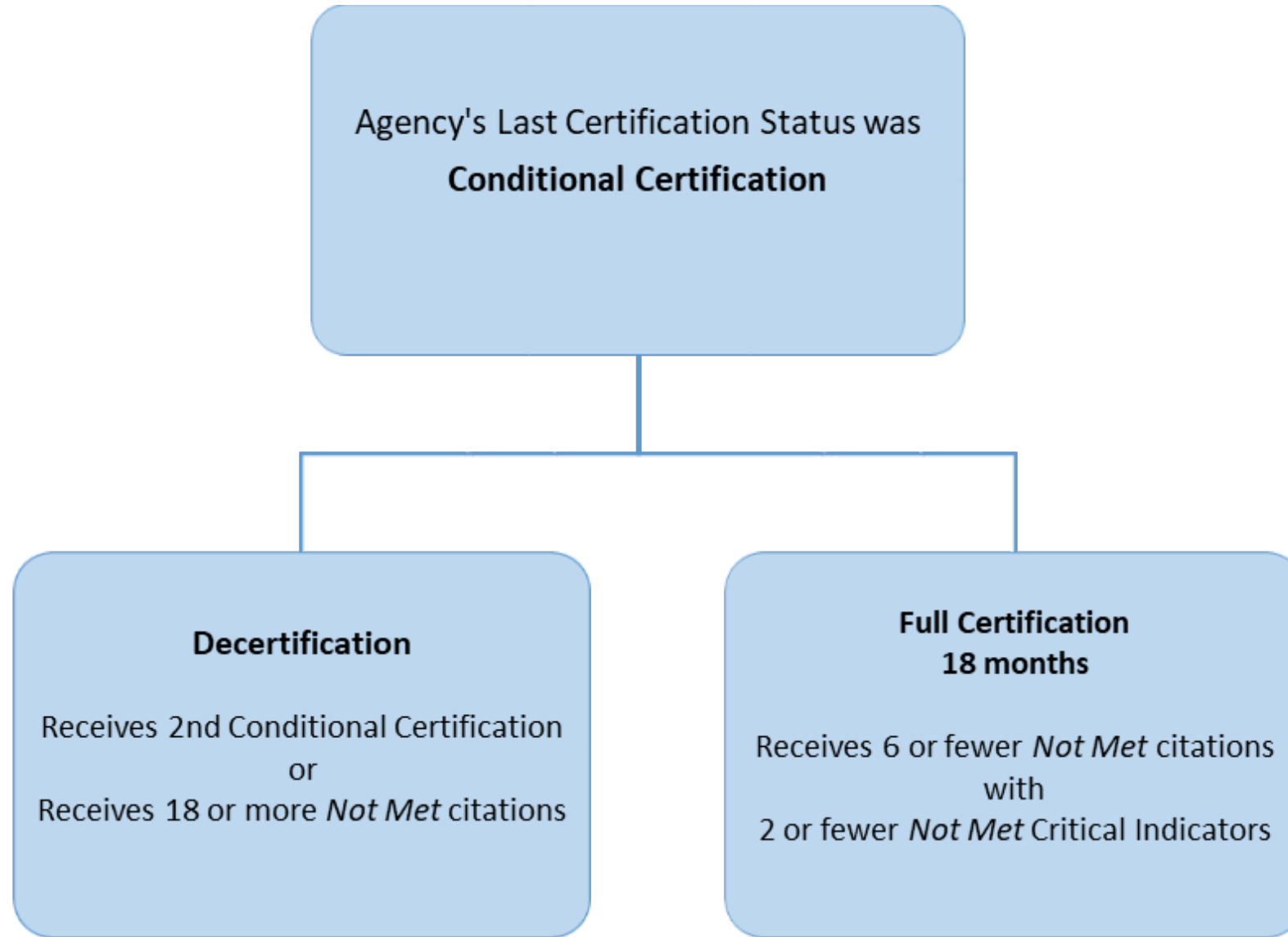
## MIHP - Existing Agency - Certification Process

To receive a certification review, an agency must have had 40 open/closed cases that were active in the previous 12 months.  
If it appears that the agency may not meet the threshold of 40 cases by the time of the review, the agency should contact the MIHP Reviewer.

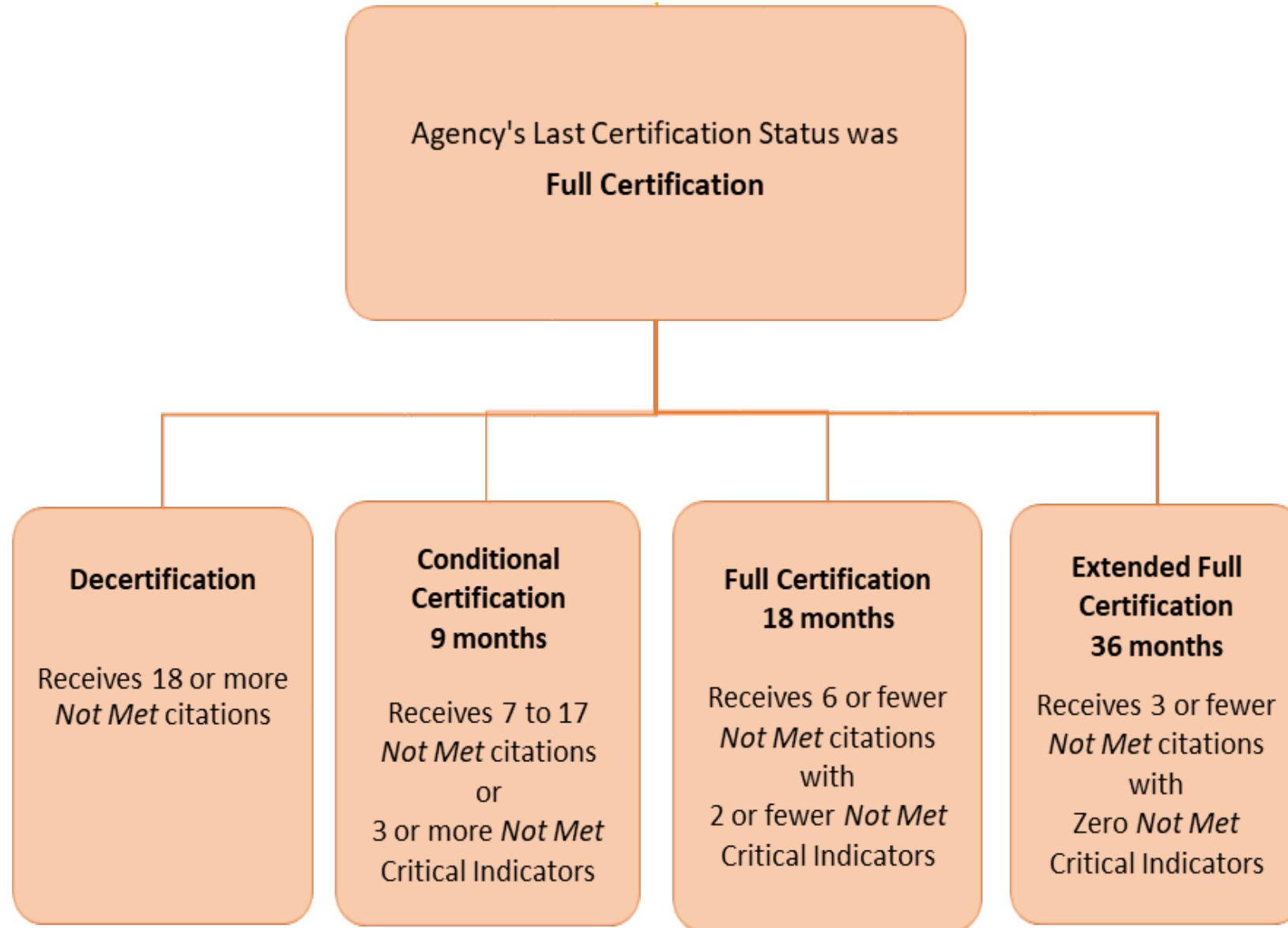


### **MIHP - Existing Agency - Certification Process**

To receive a certification review, an agency must have had 40 open/closed cases that were active in the previous 12 months. If it appears that the agency may not meet the threshold of 40 cases by the time of the review, the agency should contact the MIHP Reviewer.



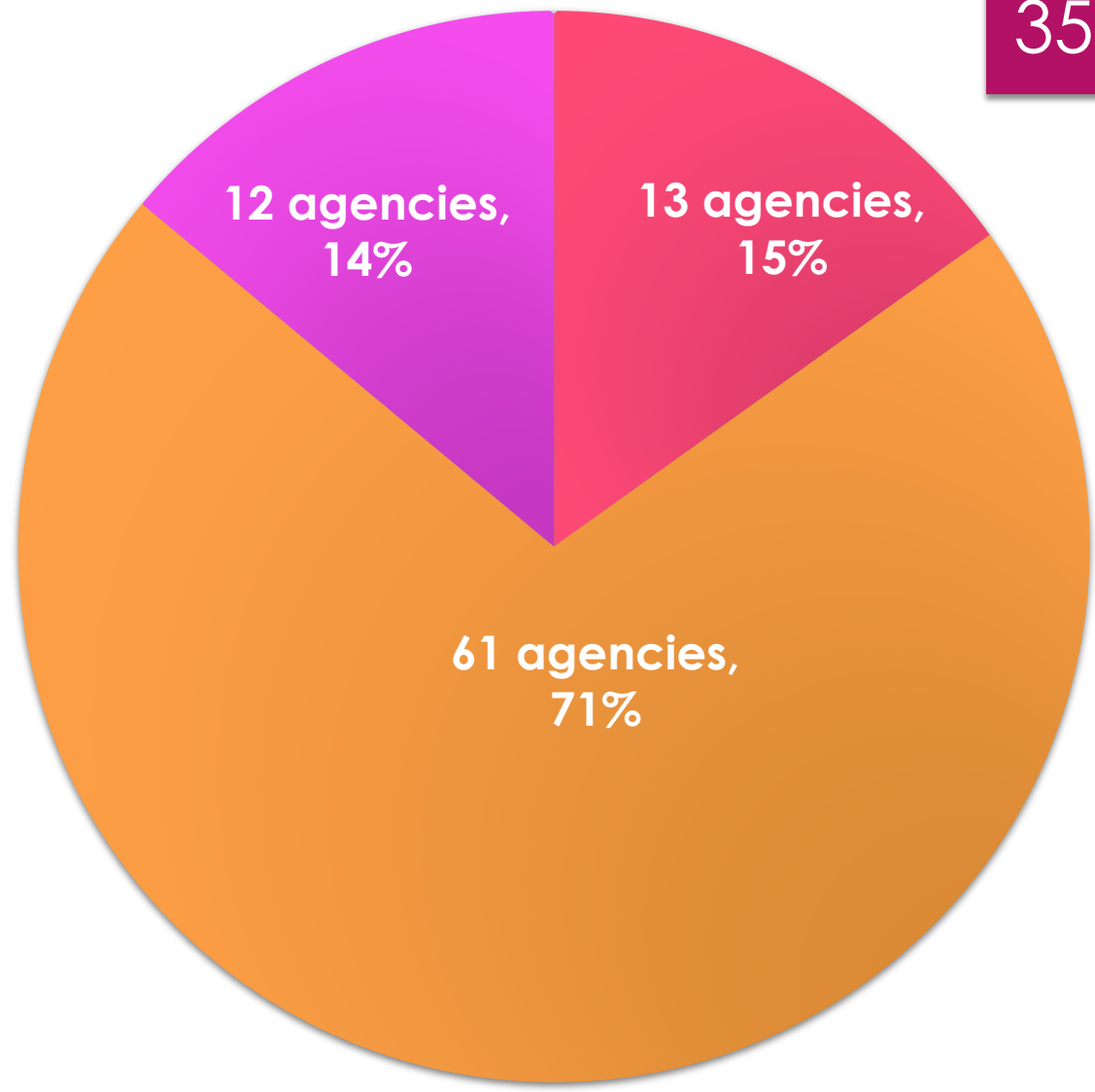




# Aggregate Certification Results

Number of Agencies	Agency Status	Certification Status	Number of Agencies per Category
<b>86</b>	Existing agencies	Extended Full	13
		Full	61
		Conditional	12
<b>5</b>	New Agencies	Conditional	5
<b>7</b>	Voluntary Closures		7
<b>6</b>	Decertification	2 <sup>nd</sup> Conditional	4
		More than 17 not mets	2

# Aggregate Certification Results



■ Extended Full ■ Full ■ Conditional

## Cycle 8

- Revision Process May 2019 until August 2019
- Final shared with MIHP agencies September 3, 2019
- Implementation Date January 1, 2020



# MIHP Administration and Program Enhancements



# Website Upgrades

- Ease of navigation
- Archiving material
- Separate sections for families and providers
- Coordination with MDHHS Home Visiting Initiative

For Families

For Providers

[MIHP Agency Directory](#)

## Welcome to the Maternal Infant Health Program

Michigan's largest, evidence-based home visitation program  
for Medicaid eligible pregnant moms and infants



- For Families
- For Providers
- Prospective Providers
- Current MIHP Providers**

- Communications**
- Forms
- Policy and Operations
- Provider Training
- Domains & Provider Education
- Parent/Family Resources
- New Staff and Certification

MATERNAL INFANT HEALTH PROGRAM / FOR PROVIDERS / CURRENT MIHP PROVIDERS / COMMUNICATIONS

## Communications

Maternal Infant Health Program (MIHP) Weekly Updates are designed to provide MIHP agencies with targeted, timely information about MIHP operations, news and events.

[MIHP Weekly Updates](#)

[Back](#)

[Michigan.gov Home](#) |

[Policies](#) | [Michigan News](#) | [ADA](#)



- For Families
- For Providers
- Prospective Providers
- Current MIHP Providers**

- Communications
- Forms
- Policy and Operations
- Provider Training
- Domains & Provider Education
- Parent/Family Resources
- New Staff and Certification

MATERNAL INFANT HEALTH PROGRAM / FOR PROVIDERS / CURRENT MIHP PROVIDERS

## MIHP Weekly Updates

### 2019 MIHP Weekly Updates

#### April 2019

##### [April 26, 2019](#)

###### INSIDE THIS ISSUE

- Field Confidentiality Guidelines
- Triple Lock Requirement
- MIHP Coordinator Directory
- Michigan Licensing and Regulatory Affairs Verification of Licensure
- Infant Risk Identifier (IRI) Update

Operations Guide Clarification: When a Beneficiary Refuses Enrollment

##### [April 19, 2019](#)

###### INSIDE THIS ISSUE

- Pre-Review documents
- May 2019 Coordinator Meetings
- Infant Product in the News
- Infant Safe Sleep Training Opportunity
- Measles Outbreak Continues

##### [April 12, 2019](#)

###### INSIDE THIS ISSUE

- Dental Visits During Pregnancy
- CDC Traveler's Health Update
- March for Babies Walks
- May 2019 Coordinator Meetings
- Measles Outbreak Continues
- National Minority Health Month--Social Media Graphic

## MIHP Administration and Program Enhancements, cont'd

- Structured partnerships with other MDHHS programs:
  - Cardiovascular Health/Diabetes Care
  - Tobacco
  - Safe Sleep
  - Breastfeeding
  - HIV
  - Additional partnerships to follow

## MIHP Administration and Program Enhancements, cont'd

- Marketing Materials
- Education Packets
- Training modules

**MIHP Training  
Module  
Enhancements**

**National Family  
Support  
Competency  
Framework for  
Family Support  
Professionals**

# The Competency Framework

- ▶ Domain 1: Infant and Early Childhood Development
- ▶ Domain 2: Child Health, Safety, and Nutrition
- ▶ Domain 3: Parent-Child Interactions
- ▶ Domain 4: Dynamics of Family Relationships
- ▶ Domain 5: Family Health, Safety, and Nutrition

## The Competency Framework

- ▶ Domain 6: Community Resources and Support
- ▶ Domain 7: Relationship-Based Family Partnerships
- ▶ Domain 8: Cultural and Linguistic Responsiveness
- ▶ Domain 9: Effective Home Visits
- ▶ Domain 10: Professional Practice

## Additional Training Enhancements



**ACHIEVE**  
**OnDemand™**

## ACHIEVE OnDemand

- Self-paced courses covering trauma-informed practice, infant mental health, domestic violence, substance abuse, foundational practices
- Opportunity extended to MIHP providers from the Michigan Home Visiting Initiative



## ACHIEVE OnDemand Available Courses:

- ▶ Basic Home Visiting
- ▶ ASQ-3
- ▶ Domestic Violence
- ▶ Family Engagement
- ▶ Infant Mental Health
- ▶ Pregnancy
- ▶ Supervising Home Visitors
- ▶ Substance Abuse
- ▶ Trauma for Supervisors
- ▶ Trauma Informed Home Visiting

[https://theounce.csod.com/default.aspx?c=aod mi custom](https://theounce.csod.com/default.aspx?c=aod_mi_custom)

## Michigan Home Visiting Initiative

### Vision:

*An Integrated home visiting system that provides Michigan's families with the right model, at the right time, in the right place.*

# Michigan Home Visiting Initiative

## The details...

- ▶ Representatives from all home visiting programs in Michigan
- ▶ Goal is integration of HV programs and processes
  - ▶ Referral
  - ▶ Billing/Reimbursement
  - ▶ Dual enrollment coordination
- ▶ Currently meeting quarterly

## Additional Information and Resources

- Research projects
  - SE Michigan Survey (UM & MSU)
  - Strong Beginnings
  - Other Surveys
- Perinatal Mood and Anxiety Disorder (PMAD) Awareness Month
- EHDI lost to follow up initiative

## Additional Information and Resources, cont'd

- Maternal Infant Health and Equity Collaborative (MIHEC)
  - Quarterly meetings:
    - **May 30<sup>th</sup>, 2019**  
Detroit, MI
    - **August 15<sup>th</sup>, 2019**  
Saginaw, MI
    - **November 14<sup>th</sup>, 2019**  
Ann Arbor, MI

## Additional Information and Resources, cont'd

### Available resources:

- MI-AIMH
- Lead-free Michigan
- PMAD Books
- Infant Safe Sleep Materials
- Text4Baby Cards