

Consumers Energy Key Points - Section 3

Theresa Martinez, Director, Distribution Agreements & Attachments

February 19, 2019

The logo for Consumers Energy, featuring the company name in a bold, blue, sans-serif font. A green swoosh underline is positioned beneath the text, starting under 'Consumers' and ending under 'Energy'.

Consumers Energy

Count on Us®

Key Points

Consumers has identified three key points:

1. Eligibility
2. Expectations
3. Efficiencies

Disclaimer

- Consumers Energy's review of the MN DIP does not mean:
 - We have necessarily reviewed other referenced documents, or that we do or do not agree with those referenced documents.
 - Our comments on the assigned sections do not necessarily address those cross-references, which we will address at a later time.
- The fact that we comment or do not comment on particular provisions does not mean we will not have further input on those sections at a later time. We have used best efforts to incorporate as much feedback as possible, but it is difficult to do as only partial/ individual sections of the MN DIP are reviewed.

Eligibility

- Eligibility for the Fast Track should be limited:
 - Potential connection less than 25 kV
 - Project less than or equal to 550 kW
- Without this limit:
 - A study would be required
 - Example – 3.2.1.4
 - Large projects likely will not pass
 - Example – 3.2.1.2

Expectations

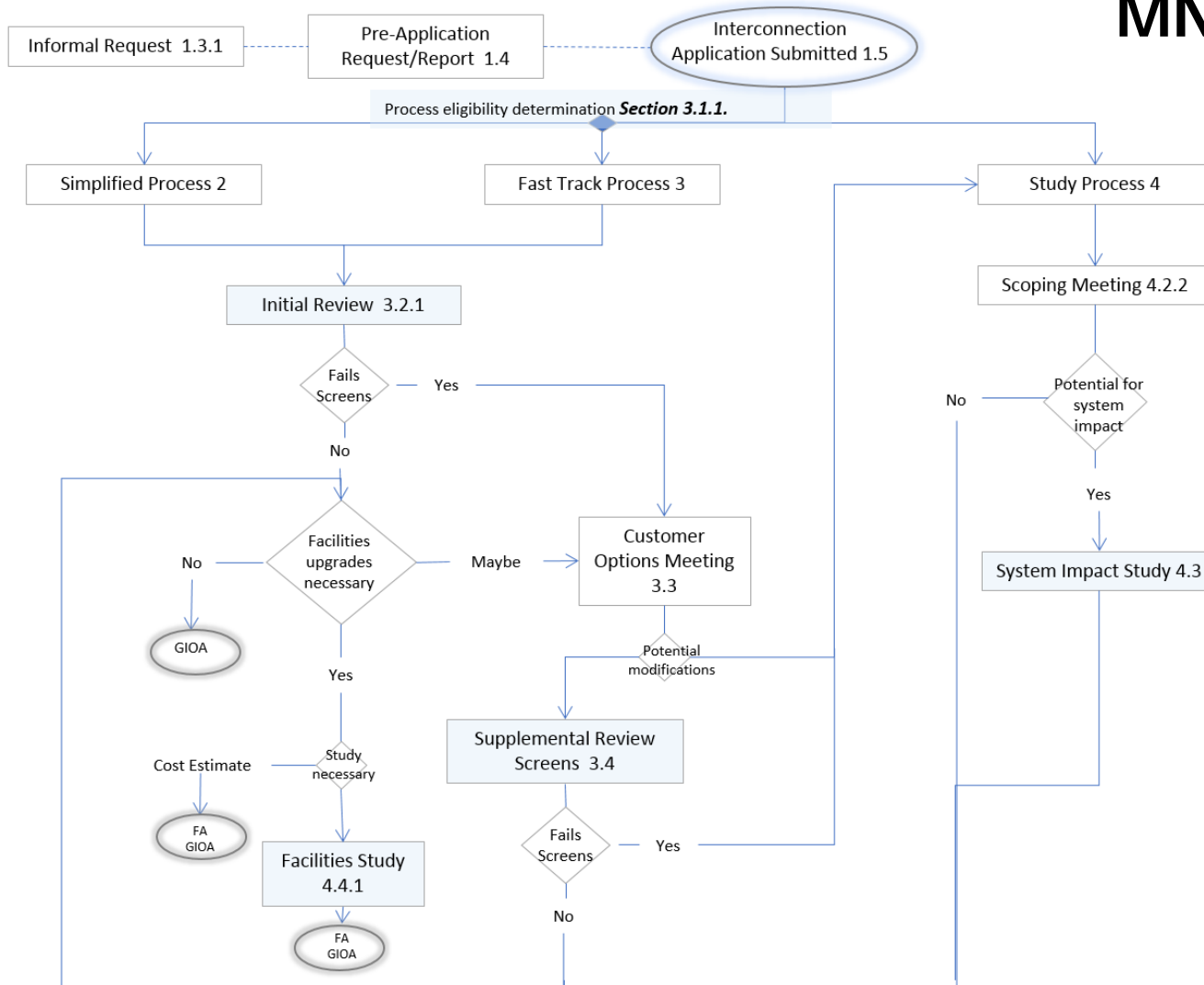
- Add terms that increase flexibility, timeliness and conciseness
 - Flexibility
 - Incorporate utility judgement for situations where screens are passed but issues arise
 - Timeliness
 - At each milestone
 - Reasonable consistent timeframes
 - Withdraw trigger for lack of movement
 - Conciseness
 - There are subtle differences in the use of terms that need to be reviewed and used more concisely
 - Nameplate Rating, DER Capacity, Capacity of DER, maximum capacity, aggregate generation capacity, etc. . .

Efficiencies

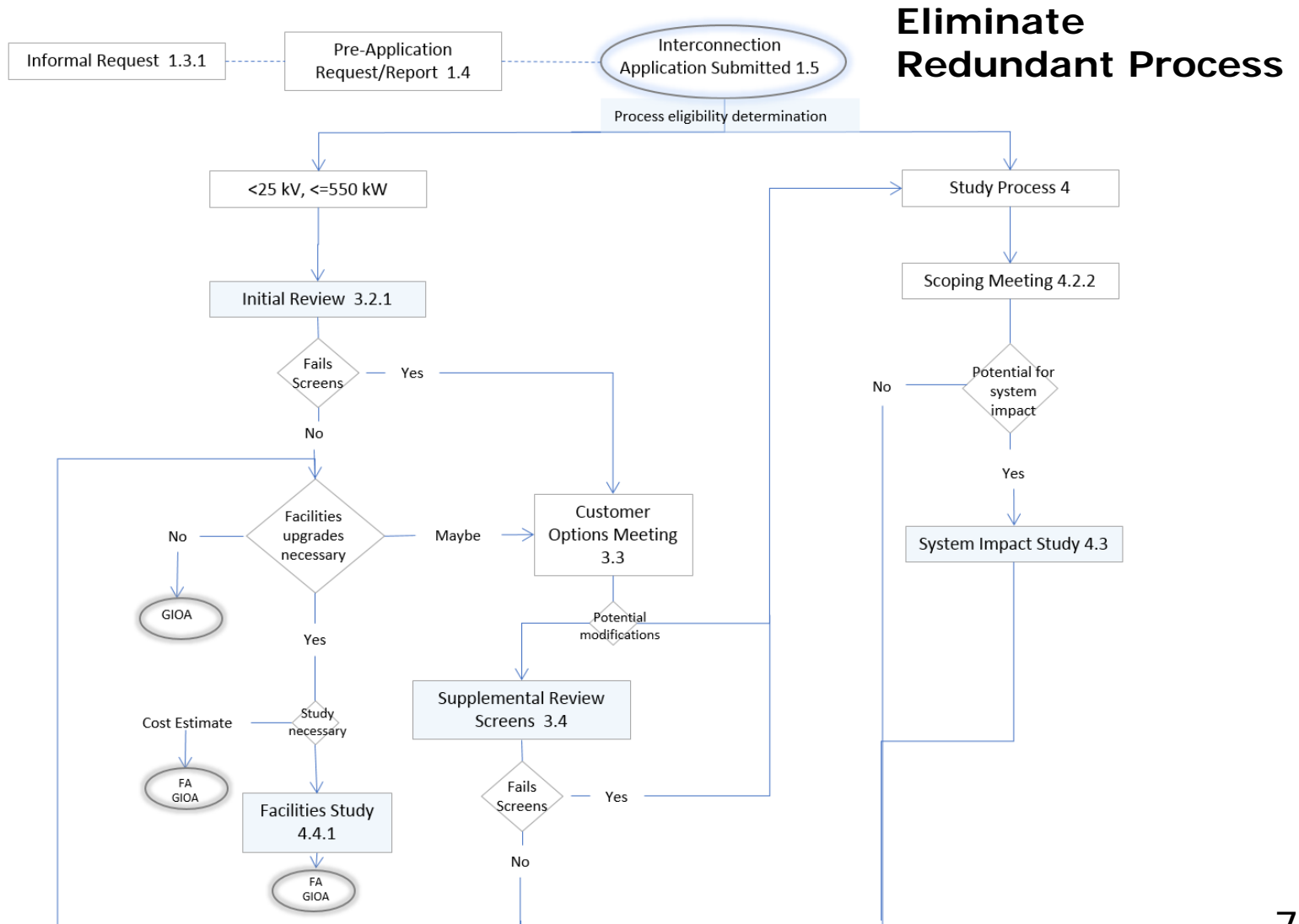
- Make Simplified and Fast Track processes a single expedited process
 - They have identical structures
 - Combining reduces redundancy and complication
 - Additional benefits
 - Decreases the administrative burden
 - Reduces the potential for confusion and disputes
 - Potential benefit to queueing

Efficiencies (continued)

MN DIP

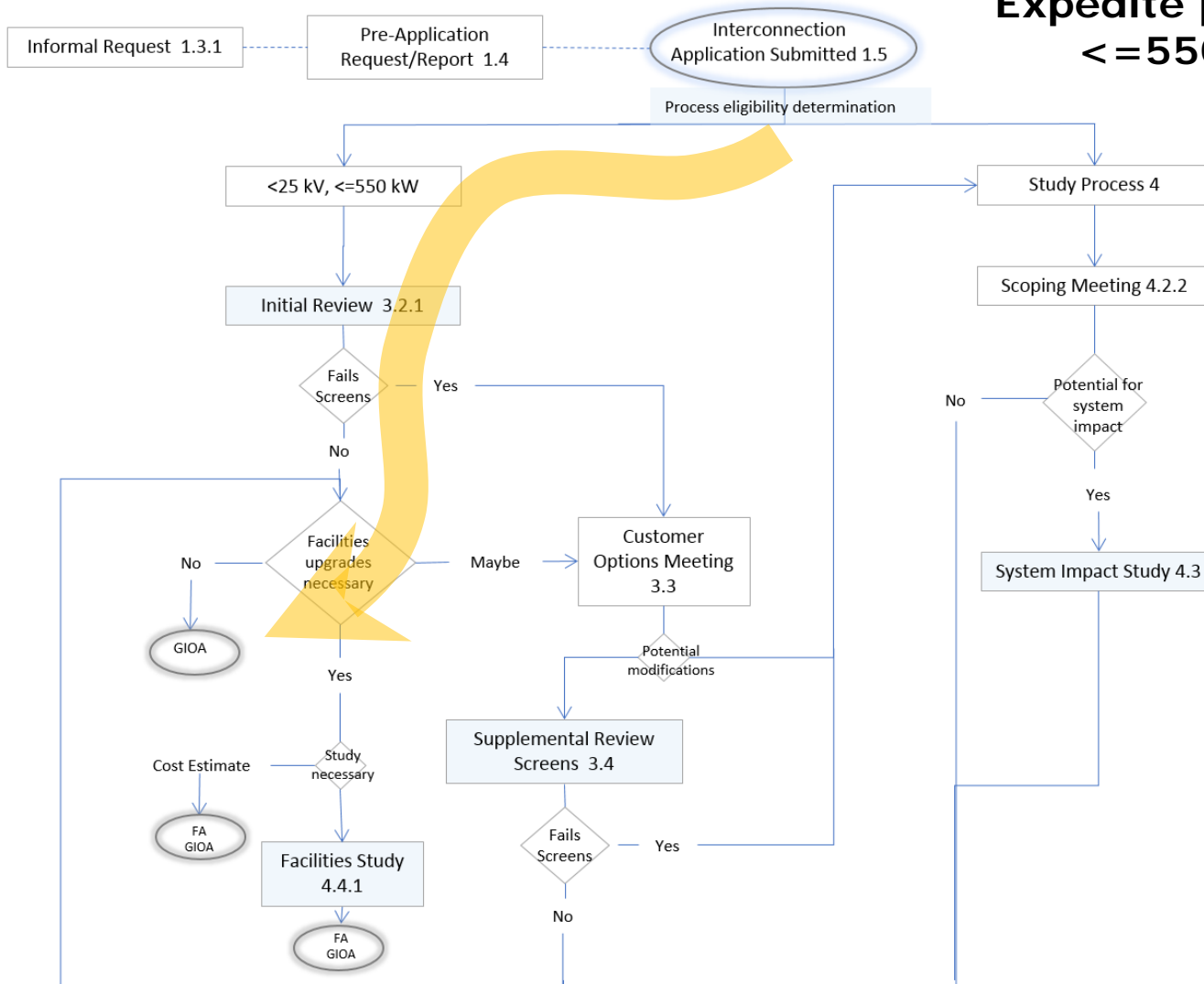


Efficiencies (continued)



Efficiencies (continued)

**Expedite potential
≤ 550 kW**



Thank you