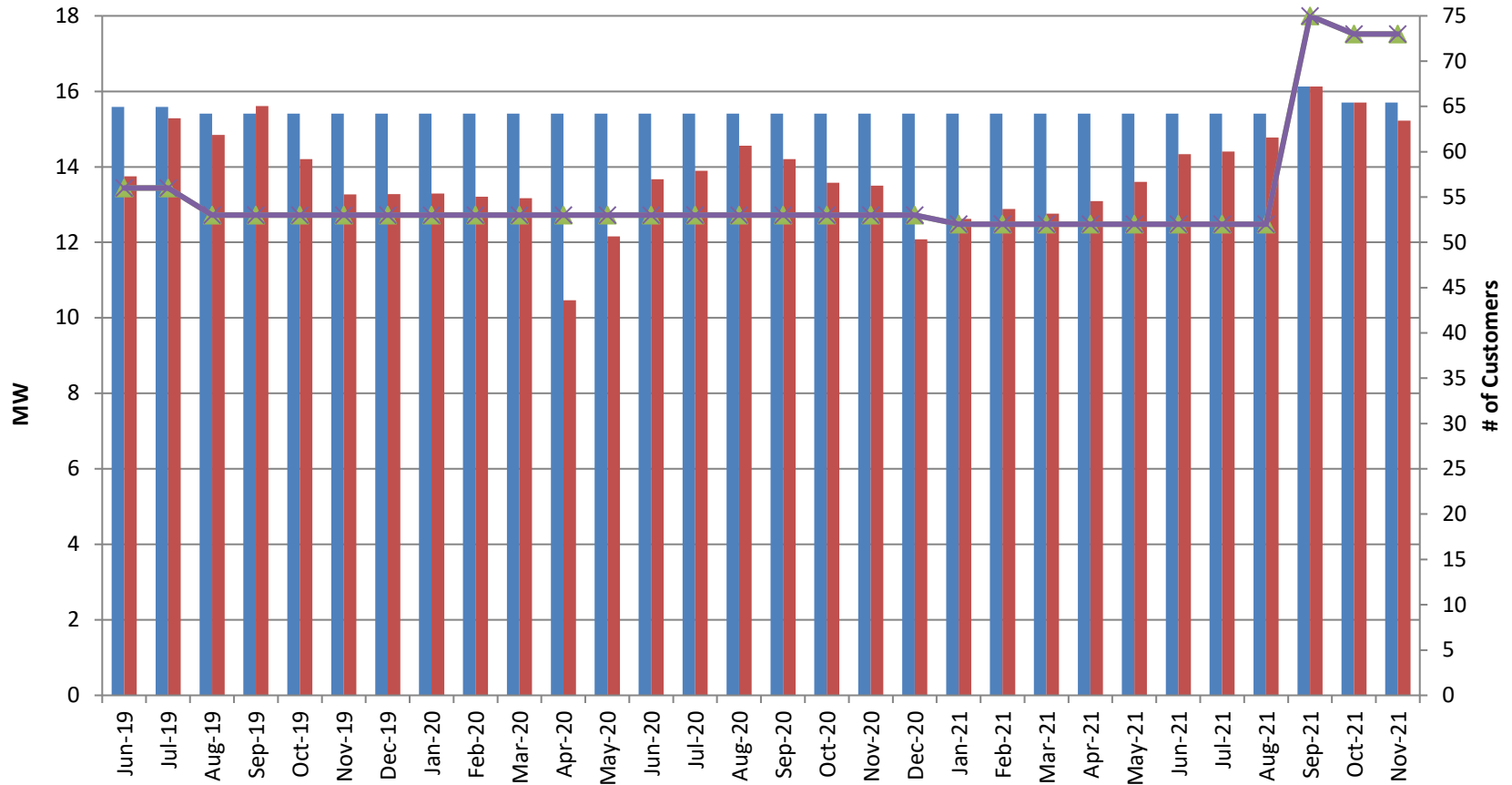


Upper Peninsula Power Company Customer Choice Program Activity (Cumulative Numbers of Customers & MW, Enrolled and In-Service, by Month)



	Jun-19	Jul-19	Aug-19	Sep-19	Oct-19	Nov-19	Dec-19	Jan-20	Feb-20	Mar-20	Apr-20	May-20	Jun-20	Jul-20	Aug-20	Sep-20	Oct-20	Nov-20	Dec-20	Jan-21	Feb-21	Mar-21	Apr-21	May-21	Jun-21	Jul-21	Aug-21	Sep-21	Oct-21	Nov-21	
MW Enrolled	15.6	15.6	15.4	15.4	15.4	15.4	15.4	15.4	15.4	15.4	15.4	15.4	15.4	15.4	15.4	15.4	15.4	15.4	15.4	15.4	15.4	15.4	15.4	15.4	15.4	15.4	15.4	15.4	16.1	15.7	15.7
MW In-Service	13.7	15.3	14.8	15.6	14.2	13.3	13.3	13.3	13.2	13.2	10.5	12.2	13.7	13.9	14.6	14.2	13.6	13.5	12.1	12.6	12.8	12.7	13.0	13.6	14.3	14.4	14.7	16.1	15.7	15.2	
Customers Enrolled	56	56	53	53	53	53	53	53	53	53	53	53	53	53	53	53	53	53	53	53	52	52	52	52	52	52	52	52	75	73	73
Customers In-Service	56	56	53	53	53	53	53	53	53	53	53	53	53	53	53	53	53	53	53	53	52	52	52	52	52	52	52	52	75	73	73

■ MW Enrolled
 ■ MW In-Service
 ▲ Customers Enrolled
 ✕ Customers In-Service