

**DEFINITION**

Robbery is the taking or attempting to take anything of value under confrontational circumstances from the care, custody, or control of a person or persons by force, threat of force, or violence and/or by putting the victim in fear of immediate harm.

**ANALYSIS**

**VOLUME**

The number of offenses for Robbery in Michigan for 2015 was 7,821. This is a reported decrease of five percent from 2014 and a 25 percent decrease from 2011.

The largest number of offenses occurred in the month of August, the least amount were committed in February.

**RATE**

The crime rate for this offense in 2015 was 79 for every 100,000 persons, which is a five percent decrease from 2014.

**CLEARANCES**

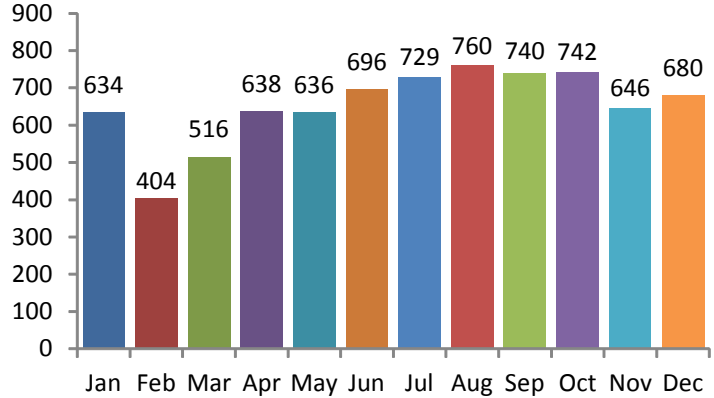
Law enforcement agencies cleared 1,332 incidents by an arrest or exceptional clearance of the 7,775 incidents reported. This is a reported 17 percent clearance rate.

**NATURE**

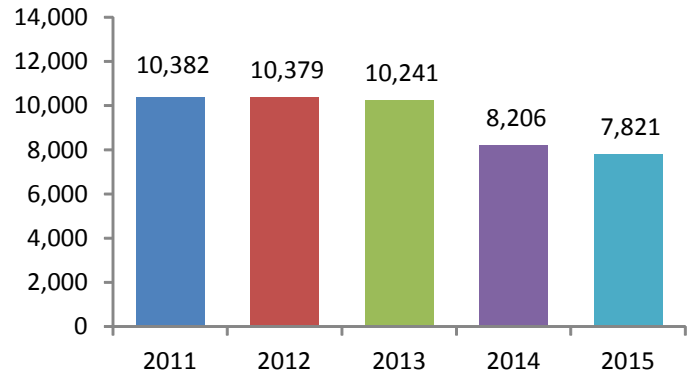
In 2015, Robberies that occurred on a Highway/Road/Alley accounted for 45 percent of the offenses. Residence/Home accounted for 16 percent of the offenses.

The weapon most used in the commission of these Robberies was a Handgun at 39 percent, which includes Automatic Handguns. Personal Weapons were used in 25 percent of the offenses.

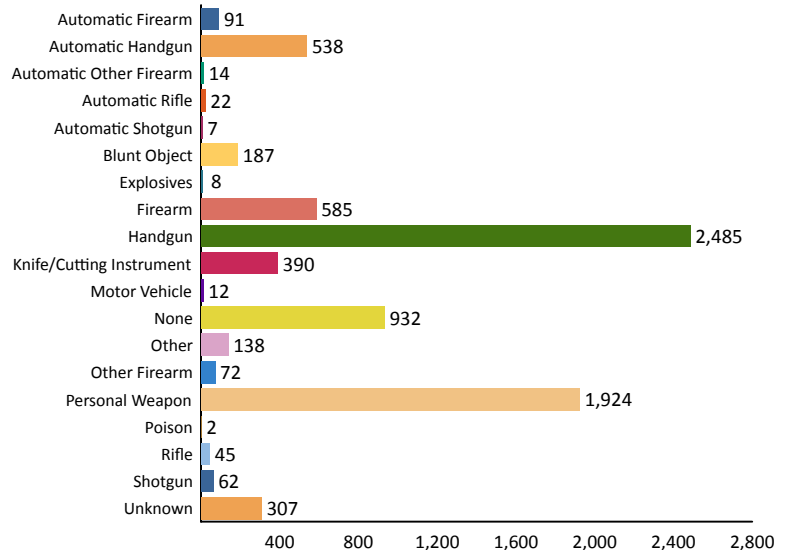
**Offenses by Month**



**5-Year Trend**  
**Number of Offenses**



**Weapons Used**





Age Group		Arrests By Age, Sex, and Race												Total
		FEMALE						MALE						
		American Indian/Alaskan Native	Asian/Pacific Islander	Black	Unknown	White	Total	American Indian/Alaskan Native	Asian/Pacific Islander	Black	Unknown	White	Total	
TOTAL JUVENILES	11-12	0	0	0	0	0	0	0	0	5	1	1	7	7
	13-14	0	0	3	0	0	3	0	0	35	0	7	42	45
	15	0	0	3	0	3	6	0	0	43	2	6	51	57
	16	0	0	5	0	1	6	0	0	59	3	8	70	76
	<b>Total</b>	<b>0</b>	<b>0</b>	<b>11</b>	<b>0</b>	<b>4</b>	<b>15</b>	<b>0</b>	<b>0</b>	<b>142</b>	<b>6</b>	<b>22</b>	<b>170</b>	<b>185</b>
TOTAL ADULTS	17	0	0	5	0	2	7	1	0	93	4	11	109	116
	18	0	0	11	0	7	18	0	0	91	5	28	124	142
	19	0	0	14	0	2	16	0	0	101	1	25	127	143
	20	0	0	10	0	8	18	0	0	72	1	26	99	117
	21	0	0	8	1	6	15	0	0	61	3	28	92	107
	22	0	0	4	0	5	9	0	0	63	2	13	78	87
	23	0	0	2	0	3	5	0	0	50	3	17	70	75
	24	0	0	6	0	1	7	0	1	46	1	9	57	64
	25-29	1	0	18	1	12	32	1	0	86	4	68	159	191
	30-34	0	1	6	0	27	34	0	0	44	3	44	91	125
	35-39	0	1	7	0	7	15	0	0	33	1	39	73	88
	40-44	0	0	6	0	4	10	1	0	29	0	16	46	56
	45-49	1	0	3	0	1	5	0	0	35	0	19	54	59
	50-54	0	0	3	0	2	5	0	0	22	0	9	31	36
	55-59	0	0	1	0	0	1	0	0	9	2	6	17	18
	60-64	0	0	0	0	0	0	0	0	7	0	0	7	7
65 & Above	0	0	0	0	0	0	0	0	0	1	2	3	3	
<b>Total</b>	<b>2</b>	<b>2</b>	<b>104</b>	<b>2</b>	<b>87</b>	<b>197</b>	<b>3</b>	<b>1</b>	<b>842</b>	<b>31</b>	<b>360</b>	<b>1,237</b>	<b>1,434</b>	
<b>Grand Total:</b>		<b>2</b>	<b>2</b>	<b>115</b>	<b>2</b>	<b>91</b>	<b>212</b>	<b>3</b>	<b>1</b>	<b>984</b>	<b>37</b>	<b>382</b>	<b>1,407</b>	<b>1,619</b>