



MICHIGAN STATE POLICE



A PROUD tradition of SERVICE through EXCELLENCE, INTEGRITY, and COURTESY.



MICHIGAN STATE POLICE DISTRICT TWO

District Two reported **89,965** crashes in 2020

Compared to 2019, 29,644 less crashes were reported in District Two.



The City of **DETROIT** had the most reported crashes in 2020

TOTAL NUMBER OF CRASHES REPORTED AT EACH POST

METRO NORTH

45,101

METRO SOUTH

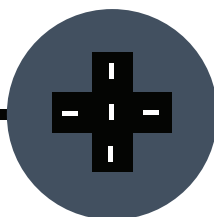
44,864

338 crashes within District Two resulted in a fatality. **19,666** resulted in injury.

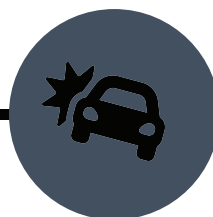
TOP 4 CRASH REPORTS TAKEN IN 2020



Young Driver Involved



Intersection Involved



Hit and Run Involved



Elderly Involved