



**DEFINITION**

Arson is to unlawfully and intentionally damage, or attempt to damage, any real or personal property by fire or incendiary devices.

**ANALYSIS**

**VOLUME**

The number of arson offenses reported in Michigan for 2013 was 1,977. This is a reported decrease of 16 percent from 2012 and a 26 percent decrease since 2009.

The largest number of offenses occurred in the month of May and the least amount were committed in February.

**RATE**

The crime rate for this offense was 20 for every 100,000 persons. In 2012, the crime rate was 24 per 100,000 persons.

**CLEARANCES**

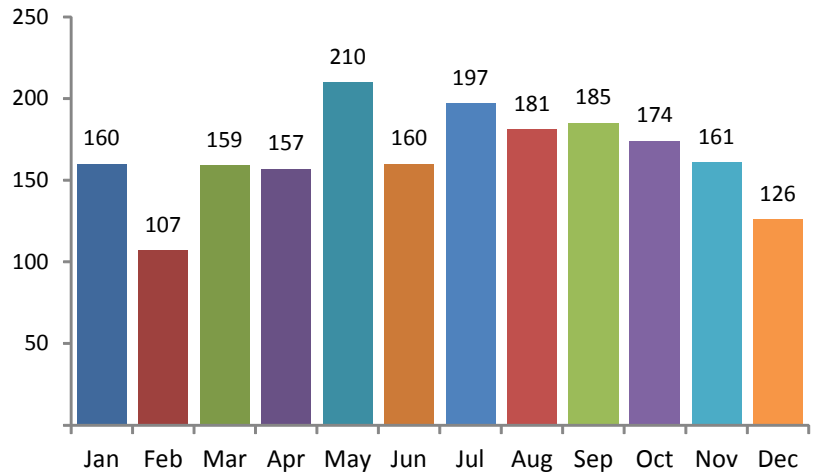
Law enforcement agencies cleared 234 incidents by an arrest or exceptional clearance out of the 1,873 incidents reported. This calculates to a 12 percent clearance rate. In 2012, the clearance rate was 11 percent.

**NATURE**

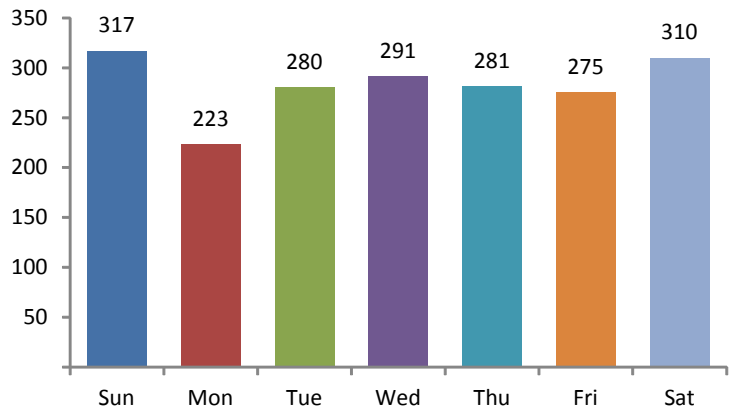
In 2013, arson victims suffered losses totaling \$15,636,444. Structures, as a whole, experienced a loss of \$13,379,021. Single occupancy structures suffered the most loss at \$7,035,296, which was 45 percent of the total value lost in arsons. Structures-Other Commercial/Business suffered losses totaling \$2,485,950, which is 16 percent of the total value lost. Other Dwelling structures suffered losses totaling \$1,546,922, which was 10 percent of the total value lost. Other structures suffered losses totaling \$1,535,524, which was 10 percent of the total value lost.

Sixteen (16) percent of the arsons were committed on Sundays in 2013, while Mondays reported the least amount of arsons at 11 percent.

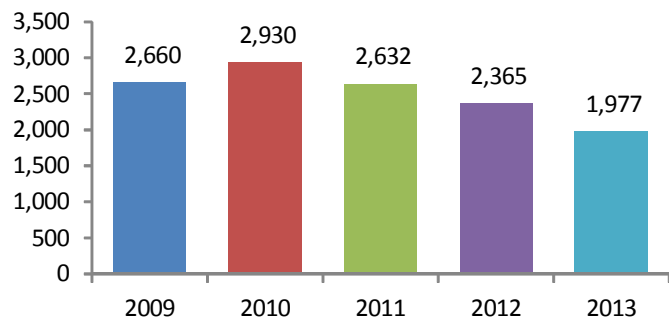
**Offenses by Month**



**Offenses by Day**



**5-Year Trend  
 Number of Offenses**



**2013 ARSON ARRESTS**



		Arrests By Age, Sex, and Race								Total
		FEMALE				MALE				
		Black	Unknown	White	Total	Black	Unknown	White	Total	
Age Group	Black	Unknown	White	Total	Black	Unknown	White	Total	Total	
TOTAL JUVENILES	10 & Under	0	0	1	1	0	0	2	2	3
	11-12	2	0	0	2	2	0	6	8	10
	13-14	1	0	3	4	6	0	18	24	28
	15	0	0	2	2	3	0	10	13	15
	16	0	0	0	0	3	0	5	8	8
	<b>Total</b>	<b>3</b>	<b>0</b>	<b>6</b>	<b>9</b>	<b>14</b>	<b>0</b>	<b>41</b>	<b>55</b>	<b>64</b>
TOTAL ADULTS	17	2	0	1	3	5	1	8	14	17
	18	0	0	0	0	2	0	4	6	6
	19	1	0	0	1	1	0	11	12	13
	20	0	0	0	0	4	1	3	8	8
	21	0	0	1	1	4	0	7	11	12
	22	0	0	1	1	2	0	3	5	6
	23	1	0	0	1	1	0	3	4	5
	24	3	0	0	3	0	0	2	2	5
	25-29	4	0	2	6	7	0	11	18	24
	30-34	4	0	4	8	4	0	16	20	28
	35-39	3	1	2	6	4	0	8	12	18
	40-44	0	0	0	0	8	0	3	11	11
	45-49	3	0	3	6	2	0	2	4	10
	50-54	2	0	3	5	5	0	6	11	16
	55-59	2	0	2	4	1	0	1	2	6
	60-64	0	0	0	0	0	0	5	5	5
65 & Above	0	0	1	1	0	0	0	0	1	
<b>Total</b>	<b>25</b>	<b>1</b>	<b>20</b>	<b>46</b>	<b>50</b>	<b>2</b>	<b>93</b>	<b>145</b>	<b>191</b>	
<b>Grand Total:</b>	<b>28</b>	<b>1</b>	<b>26</b>	<b>55</b>	<b>64</b>	<b>2</b>	<b>134</b>	<b>200</b>	<b>255</b>	