

**DEFINITION**

Burglary Forced Entry is the unlawful forcible entry of a building or other structure with the intent to commit a theft or felony. This does not apply to motor vehicles or coin boxes.

**ANALYSIS**

**VOLUME**

The number of forced entry burglaries committed in Michigan in 2013 was 45,710. This is a reported decrease of 16 percent from 2012 and a 29 percent decrease since 2009.

The largest number of offenses occurred in the month of July. The least amount occurred in February.

**RATE**

The crime rate for this offense was 462 for every 100,000 persons. In 2012, the crime rate was 549 per 100,000 persons.

**CLEARANCES**

Law enforcement agencies cleared 4,067 incidents by an arrest or exceptional clearance out of the 45,363 incidents reported. This calculates to a 9 percent clearance rate.

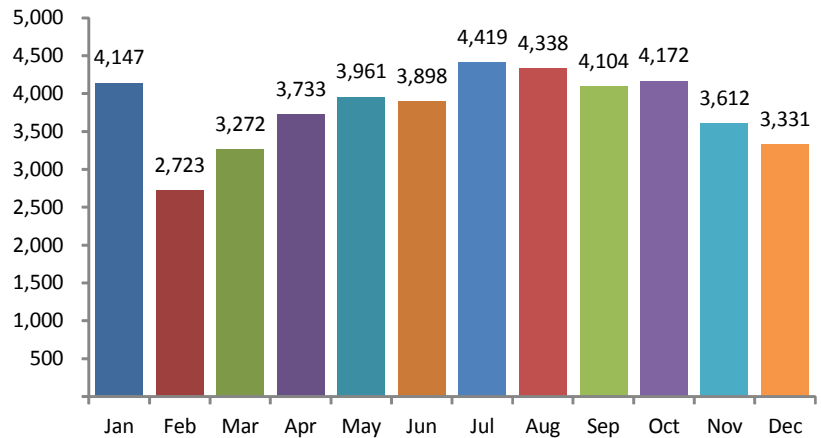
**NATURE**

In 2013, property data received from law enforcement agencies reported that property loss values during the commission of the forced entry burglaries totaled \$71,226,198. Total property loss values for all property crimes was \$671,467,809. For forced entry burglaries, this equates to 11 percent of this value.

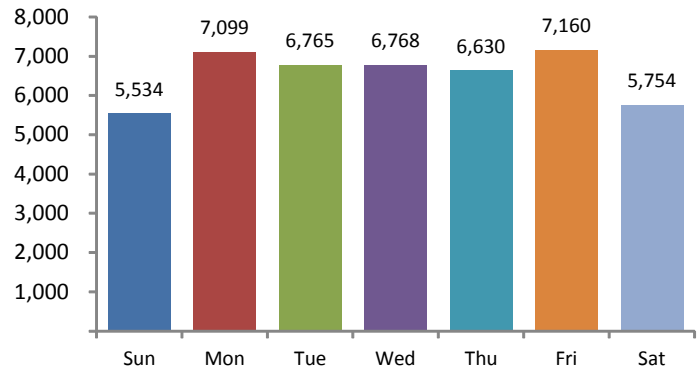
These crimes occurred most often (77 percent) at a Residence/Home. Commercial/Office Buildings were burglarized 4 percent of the time.

The most forced entry burglaries in Michigan for 2013 occurred on Fridays. The least amount of incidents occurred on Sundays.

**Offenses by Month**

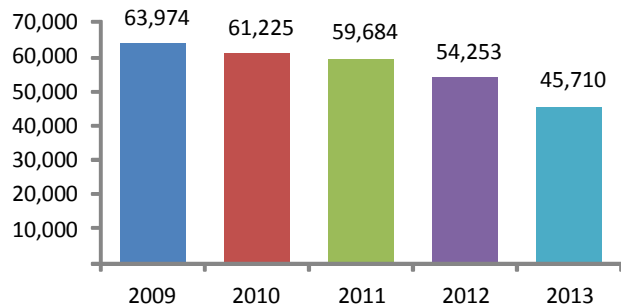


**Offenses by Day**



**5-Year Trend**

**Number of Offenses**



**2013 BURGLARY  
FORCED ENTRY ARRESTS**



		Arrests By Age, Sex, and Race										Total
		FEMALE				MALE						
		Black	Unknown	White	Total	American Indian/Alaskan Native	Asian/Pacific Islander	Black	Unknown	White	Total	
Age Group	Black	Unknown	White	Total	American Indian/Alaskan Native	Asian/Pacific Islander	Black	Unknown	White	Total	Total	
TOTAL JUVENILES	10 & Under	0	0	1	1	0	0	3	0	2	5	6
	11-12	0	0	3	3	0	0	16	2	17	35	38
	13-14	3	0	16	19	0	0	65	6	76	147	166
	15	4	0	3	7	0	0	73	3	42	118	125
	16	2	0	3	5	0	0	101	6	73	180	185
	<b>Total</b>	<b>9</b>	<b>0</b>	<b>26</b>	<b>35</b>	<b>0</b>	<b>0</b>	<b>258</b>	<b>17</b>	<b>210</b>	<b>485</b>	<b>520</b>
TOTAL ADULTS	17	9	1	12	22	0	0	147	5	151	303	325
	18	7	0	10	17	0	1	167	8	153	329	346
	19	7	0	10	17	0	1	137	7	126	271	288
	20	9	1	12	22	1	0	105	3	109	218	240
	21	4	1	9	14	1	1	92	1	107	202	216
	22	5	0	16	21	1	0	84	7	75	167	188
	23	2	0	14	16	0	0	84	3	79	166	182
	24	1	0	6	7	1	2	62	6	76	147	154
	25-29	13	1	55	69	0	2	188	5	296	491	560
	30-34	15	0	32	47	0	0	135	3	230	368	415
	35-39	8	1	14	23	0	0	107	2	138	247	270
	40-44	5	1	21	27	1	1	96	3	103	204	231
	45-49	4	0	10	14	1	1	90	2	74	168	182
	50-54	0	0	5	5	0	0	69	1	44	114	119
	55-59	1	0	7	8	0	0	37	1	22	60	68
60-64	4	0	0	4	0	0	15	0	13	28	32	
65 & Above	0	0	0	0	0	0	2	0	3	5	5	
<b>Total</b>	<b>94</b>	<b>6</b>	<b>233</b>	<b>333</b>	<b>6</b>	<b>9</b>	<b>1,617</b>	<b>57</b>	<b>1,799</b>	<b>3,488</b>	<b>3,821</b>	
<b>Grand Total:</b>	<b>103</b>	<b>6</b>	<b>259</b>	<b>368</b>	<b>6</b>	<b>9</b>	<b>1,875</b>	<b>74</b>	<b>2,009</b>	<b>3,973</b>	<b>4,341</b>	



**DEFINITION**

Burglary Entry Without Force is the unlawful entry, without force, with the intent to commit a theft or other felony. This does not apply to motor vehicles or coin boxes.

**ANALYSIS**

**VOLUME**

The number of entry without force burglaries committed in Michigan in 2013 was 8,552. This is a reported decrease of 9 percent from 2012 and a 23 percent decrease since 2009.

The largest number of offenses occurred in the month of August and the least amount were committed in February.

**RATE**

The crime rate for this offense was 86 for every 100,000 persons. In 2012, the crime rate was 95 per 100,000 persons.

**CLEARANCES**

Law enforcement agencies cleared 835 incidents by an arrest or exceptional clearance out of the 8,466 incidents reported. This calculates to a 10 percent clearance rate. In 2012, the clearance rate was 9 percent.

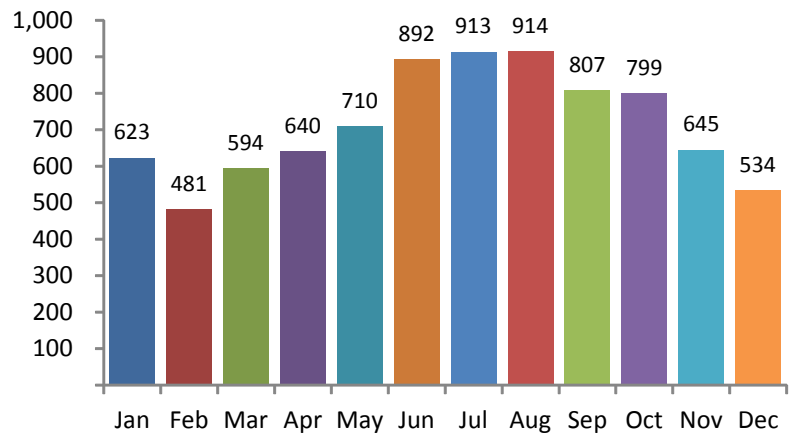
**NATURE**

In 2013, property data received from law enforcement agencies reported that property loss during the commission of the entry without force burglaries totaled \$131,687,300. Total property loss values for all property crimes was \$671,467,809. For entry without force burglaries, this equates to 20 percent of this value.

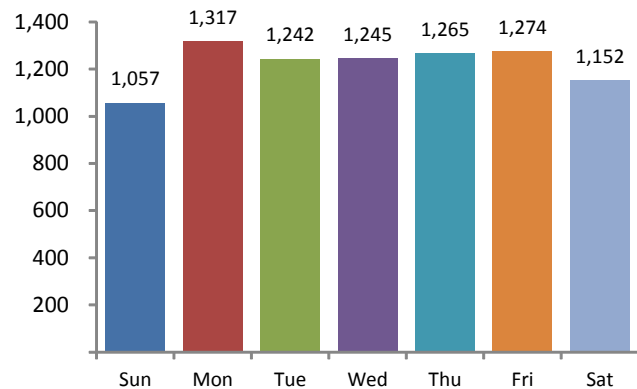
These crimes occurred most often (84 percent) at a Residence/Home. Parking Lot/Garage was the location for 4 percent of the offenses.

In 2013, burglaries without force occurred most often on Mondays while the least number occurred on Sundays.

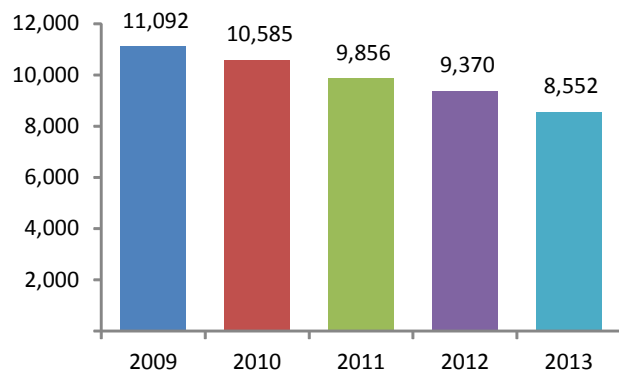
**Offenses by Month**



**Offenses by Day**



**5-Year Trend  
Number of Offenses**



Age Group		Arrests By Age, Sex, and Race											Total
		FEMALE					MALE						
		American Indian/Alaskan Native	Black	Unknown	White	Total	American Indian/Alaskan Native	Asian/Pacific Islander	Black	Unknown	White	Total	
TOTAL JUVENILES	10 & Under	0	0	0	0	0	0	0	0	0	2	2	2
	11-12	0	0	1	1	2	0	0	3	0	12	15	17
	13-14	0	1	0	3	4	0	0	13	0	19	32	36
	15	0	0	1	2	3	0	0	15	1	12	28	31
	16	0	3	0	3	6	1	0	10	2	17	30	36
	<b>Total</b>	<b>0</b>	<b>4</b>	<b>2</b>	<b>9</b>	<b>15</b>	<b>1</b>	<b>0</b>	<b>41</b>	<b>3</b>	<b>62</b>	<b>107</b>	<b>122</b>
TOTAL ADULTS	17	0	0	1	2	3	0	0	17	0	21	38	41
	18	0	1	0	2	3	0	0	11	2	32	45	48
	19	0	1	0	6	7	1	0	18	0	21	40	47
	20	0	1	0	6	7	1	0	12	0	25	38	45
	21	0	1	0	3	4	0	0	6	1	24	31	35
	22	0	0	0	2	2	0	0	7	0	27	34	36
	23	0	0	0	6	6	0	0	7	0	27	34	40
	24	0	1	0	4	5	0	0	8	0	13	21	26
	25-29	0	3	0	18	21	0	1	19	1	68	89	110
	30-34	1	1	0	14	16	2	0	14	0	38	54	70
	35-39	0	0	0	5	5	0	0	6	0	24	30	35
	40-44	0	1	0	7	8	0	0	10	1	22	33	41
	45-49	0	2	1	5	8	0	0	5	0	29	34	42
	50-54	0	1	0	1	2	1	0	6	0	16	23	25
	55-59	0	0	0	1	1	0	0	2	0	8	10	11
	60-64	0	0	0	1	1	0	0	1	0	3	4	5
65 & Above	0	1	0	0	1	0	0	0	0	3	3	4	
<b>Total</b>	<b>1</b>	<b>14</b>	<b>2</b>	<b>83</b>	<b>100</b>	<b>5</b>	<b>1</b>	<b>149</b>	<b>5</b>	<b>401</b>	<b>561</b>	<b>661</b>	
<b>Grand Total:</b>	<b>1</b>	<b>18</b>	<b>4</b>	<b>92</b>	<b>115</b>	<b>6</b>	<b>1</b>	<b>190</b>	<b>8</b>	<b>463</b>	<b>668</b>	<b>783</b>	