

DEFINITION

Robbery is the taking or attempting to take anything of value under confrontational circumstances from the care, custody, or control of a person or persons by force, threat of force, or violence and/or by putting the victim in fear of immediate harm.

ANALYSIS

VOLUME

The number of offenses for Robbery in Michigan for 2014 was 8,206. This is a reported decrease of 20 percent from 2013 and a 28 percent decrease from 2010.

The largest number of offenses occurred in the month of August, the least amount were committed in February.

RATE

The crime rate for this offense in 2014 was 83 for every 100,000 persons, which is a 20 percent decrease from 2013.

CLEARANCES

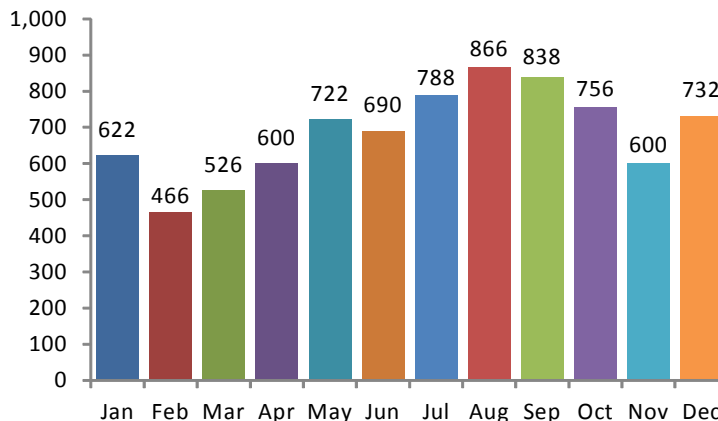
Law enforcement agencies cleared 1,455 incidents by an arrest or exceptional clearance of the 8,171 incidents reported. This is a reported 18 percent clearance rate.

NATURE

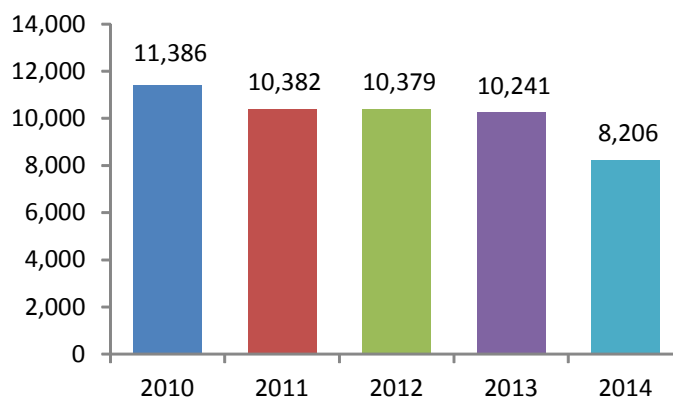
In 2014, Robberies that occurred on a Highway/Road/Alley accounted for 47 percent of the offenses. Residence/Home accounted for 14 percent of the offenses.

The weapon most used in the commission of these Robberies was a Handgun at 38 percent, which includes Automated Handguns. Personal Weapons were used in 25 percent of the offenses.

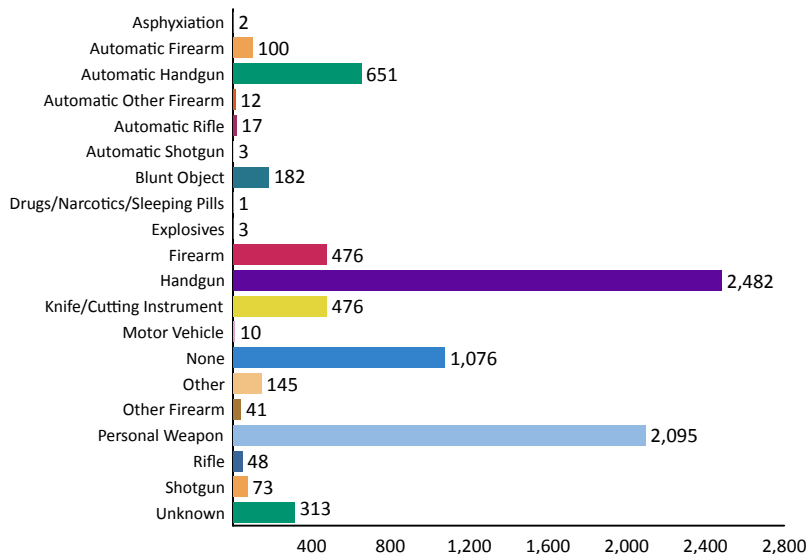
Offenses by Month



5-Year Trend
Number of Offenses



Weapons Used



2014 Robbery Arrests



		Arrests By Age, Sex, and Race										Total
		FEMALE				MALE						
		Black	Unknown	White	Total	American Indian/Alaskan Native	Asian/Pacific Islander	Black	Unknown	White	Total	
Age Group		Black	Unknown	White	Total	American Indian/Alaskan Native	Asian/Pacific Islander	Black	Unknown	White	Total	Total
TOTAL JUVENILES	11-12	0	0	0	0	0	0	8	1	1	10	10
	13-14	0	0	0	0	0	0	36	0	5	41	41
	15	1	0	1	2	0	0	45	3	10	58	60
	16	6	2	1	9	0	0	83	2	10	95	104
	Total	7	2	2	11	0	0	172	6	26	204	215
TOTAL ADULTS	17	4	0	3	7	1	0	135	2	30	168	175
	18	8	0	5	13	0	0	102	2	30	134	147
	19	15	0	4	19	1	1	104	3	17	126	145
	20	8	0	5	13	0	0	102	3	32	137	150
	21	7	2	1	10	0	0	79	1	19	99	109
	22	7	1	2	10	0	0	74	4	16	94	104
	23	7	0	6	13	0	0	46	2	17	65	78
	24	5	1	1	7	0	0	53	2	12	67	74
	25-29	15	0	16	31	0	0	135	5	68	208	239
	30-34	9	1	23	33	0	1	60	3	44	108	141
	35-39	6	1	5	12	0	0	39	0	31	70	82
	40-44	5	1	2	8	0	0	31	2	24	57	65
	45-49	8	0	2	10	0	0	36	0	17	53	63
	50-54	3	0	2	5	0	0	19	1	14	34	39
	55-59	1	0	0	1	0	0	21	0	9	30	31
	60-64	0	0	0	0	0	0	5	0	0	5	5
	65 & Above	0	0	0	0	0	0	1	0	4	5	5
Total	108	7	77	192	2	2	1,042	30	384	1,460	1,652	
Grand Total:		115	9	79	203	2	2	1,214	36	410	1,664	1,867