

DEFINITION

Robbery is the taking or attempting to take anything of value under confrontational circumstances from the care, custody, or control of a person or persons by force, threat of force, or violence and/or by putting the victim in fear of immediate harm.

ANALYSIS

VOLUME

The number of offenses for Robbery in Michigan for 2017 was 6,486. This is a reported decrease of nine percent from 2016 and a thirty-seven percent decrease from 2013.

The largest number of offenses occurred in the month of July; the least amount were committed in February.

RATE

The crime rate for this offense in 2017 was 65 for every 100,000 persons, which is a ten percent decrease from 2016.

CLEARANCES

Law enforcement agencies cleared 1,174 incidents by an arrest or exceptional clearance of the 6,466 incidents reported. This is a reported eighteen percent clearance rate.

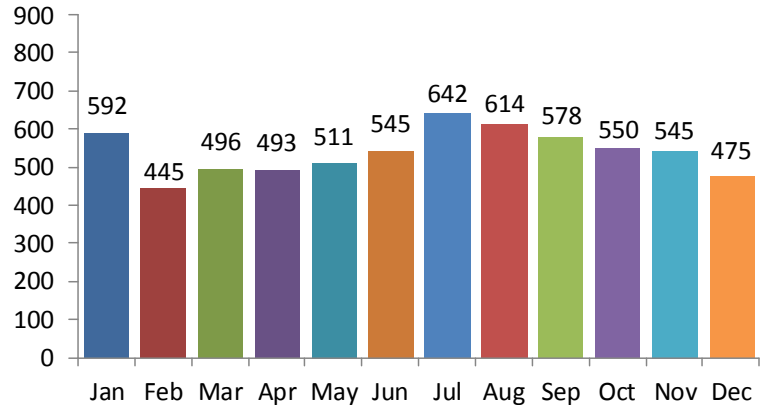
NATURE

In 2017, Robberies that occurred on a Highway/Road/Alley accounted for forty percent of the offenses. Residence/Home accounted for nineteen percent of the offenses.

The weapon most used in the commission of these Robberies was a Handgun at thirty-eight percent, which includes Automatic Handguns. Personal Weapons were used in twenty-five percent of the offenses.

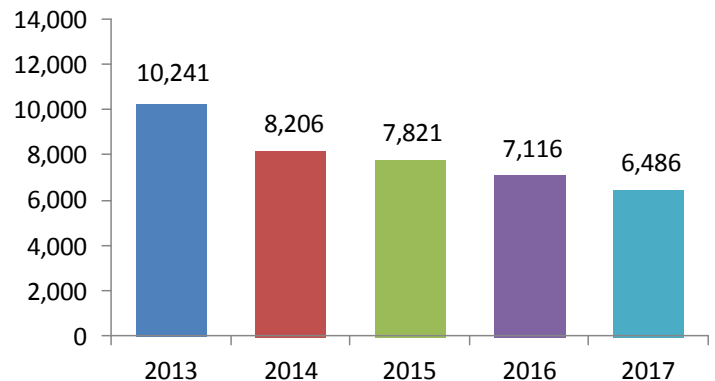
Carjackings are classified as a Robbery with a motor vehicle marked stolen. In 2017, there were 509 offenses of Carjacking. There were 472 that occurred in 2016, which is an eight percent increase.

Offenses by Month

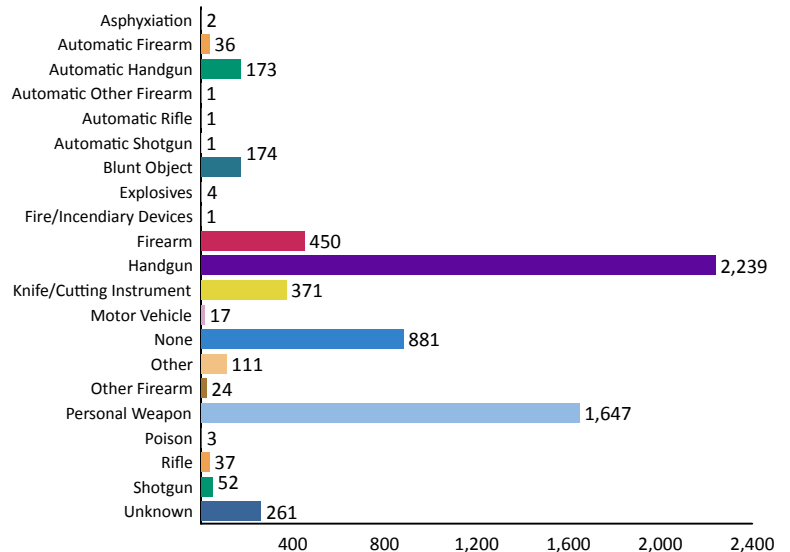


5-Year Trend

Number of Offenses



Weapons Used



2017 Robbery Arrests

Age Group		Arrests By Age, Sex, and Race										Grand Total
		FEMALE					MALE					
		Asian/Pacific Islander	Black	Unknown	White	Total	Asian/Pacific Islander	Black	Unknown	White	Total	
Total Juveniles	11-12	0	1	0	0	1	0	5	1	1	7	8
	13-14	0	6	0	2	8	0	28	0	6	34	42
	15	0	0	0	2	2	0	32	1	14	47	49
	16	0	2	0	0	2	0	50	0	11	61	63
	Total	0	9	0	4	13	0	115	2	32	149	162
Total Adults	17	0	6	1	3	10	0	92	1	19	112	122
	18	0	6	0	4	10	0	60	4	22	86	96
	19	0	4	0	2	6	0	61	2	17	80	86
	20	0	6	0	0	6	1	43	4	10	58	64
	21	0	3	0	3	6	0	29	1	11	41	47
	22	0	6	0	2	8	0	32	0	11	43	51
	23	0	6	0	3	9	0	44	1	10	55	64
	24	0	6	0	3	9	0	22	0	9	31	40
	25-29	0	24	0	13	37	0	117	2	67	186	223
	30-34	1	7	1	19	28	0	50	3	43	96	124
	35-39	0	11	0	8	19	0	34	3	20	57	76
	40-44	0	4	0	4	8	0	29	0	21	50	58
	45-49	0	4	0	3	7	0	28	1	13	42	49
	50-54	0	5	0	1	6	0	22	2	5	29	35
	55-59	0	1	0	1	2	0	9	0	6	15	17
60-64	0	1	0	0	1	0	5	0	2	7	8	
65 & Above	0	1	0	0	1	0	5	1	0	6	7	
Total	1	101	2	69	173	1	682	25	286	994	1,167	
Grand Total:		1	110	2	73	186	1	797	27	318	1,143	1,329