

DEFINITION

The Federal Bureau of Investigation, Uniform Crime Reporting program has defined Murder as *the willful killing of one human being by another.*

The classification of this offense is based solely on police investigation as opposed to the determination of a court, medical examiner, coroner, jury, or other judicial body. Deaths caused by negligence, suicide, accident, or justifiable homicide are not included in this offense category.

ANALYSIS

VOLUME

The reported number of murders committed in Michigan in 2019 was 549. This was a less than one percent decrease in murders from 2018 and a four percent decrease from 2015. The highest number of murders occurred in the month of July and the lowest occurred in the month of February. Murders occurred most often on Saturdays and least often on Wednesdays.

CRIME RATE

The murder rate in 2019 was five murders for every 100,000 persons. The murder rate in 2018 was six murders for every 100,000 persons.

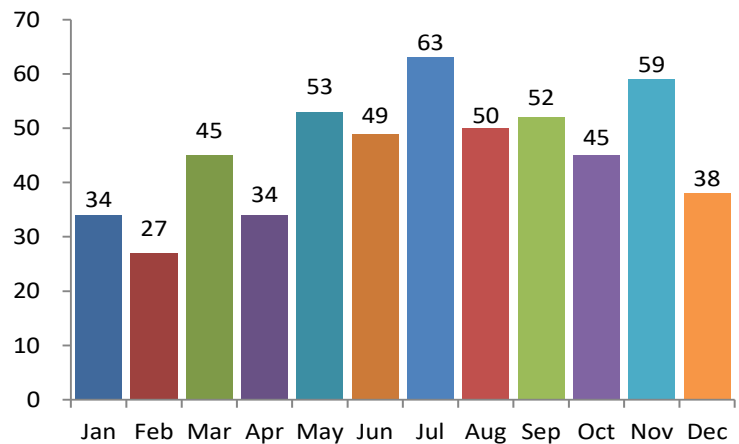
CLEARANCES

In 2019, 53 percent of all murders were cleared by an arrest or exceptional means. Exceptional clearances can be reported when one of the following circumstances has occurred: Death of Offender, Prosecution Declined, In Custody of Other Jurisdiction, Victim Refused to Cooperate, or Juvenile/No Custody.

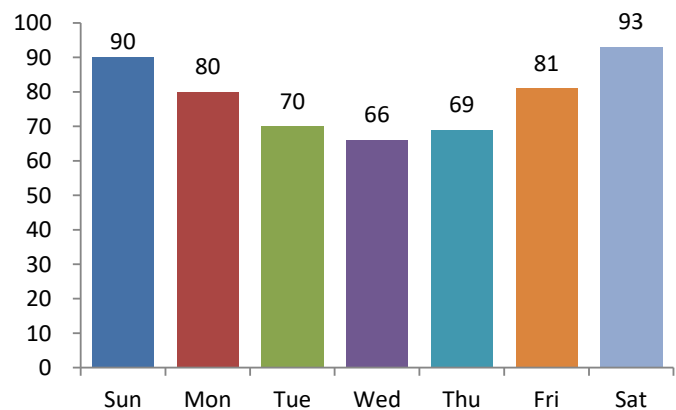
NATURE

Of the 549 murders, 69 percent were committed by the use of a firearm (e.g., firearm, handgun, rifle, shotgun, and other firearm including automatics of these categories). Knife/Cutting Instrument was the weapon of choice in eight percent of the reported cases and Personal Weapons (e.g., hands, fists, feet, etc.) in four percent of the cases.

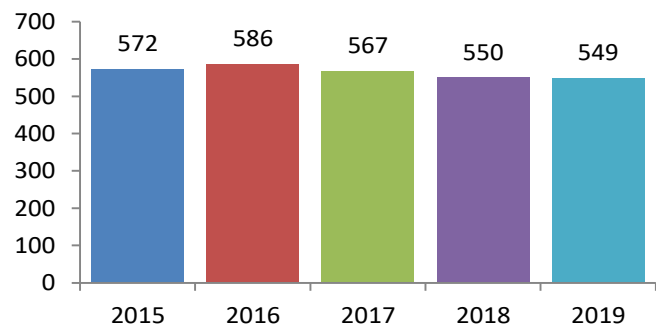
Victims by Month



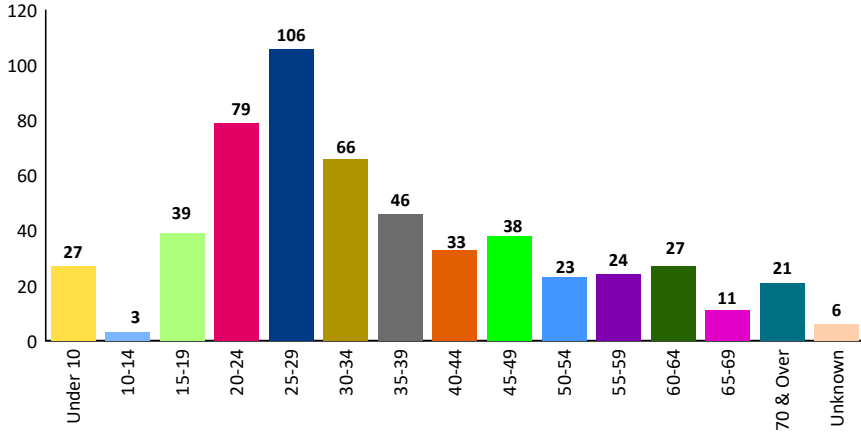
Victims by Day



5-Year Trend Number of Victims



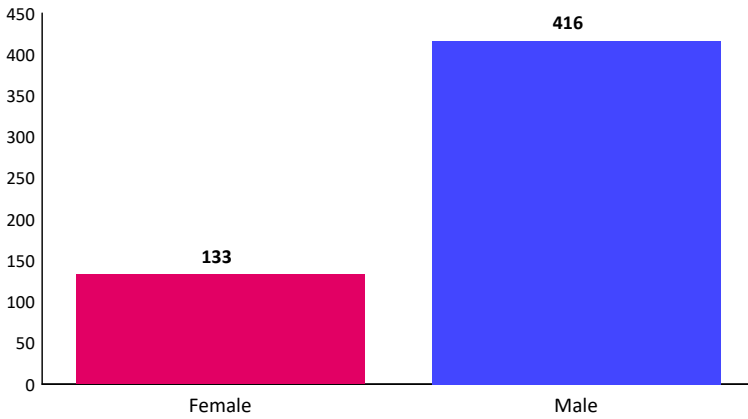
Age of Victims



Age Analysis

Nineteen percent of the victims were between the ages of 25 and 29. In 2018, this age group reported 18 percent of the victims.

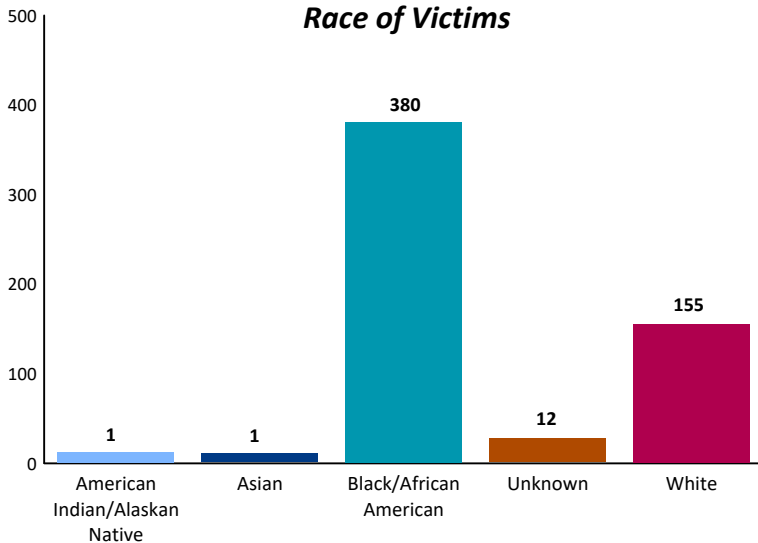
Gender of Victims



Gender Analysis

Fifty percent of the Female victims were Black/African American and 46 percent were White. Within the 416 Male victims, 75 percent were Black/African American and 23 percent were White.

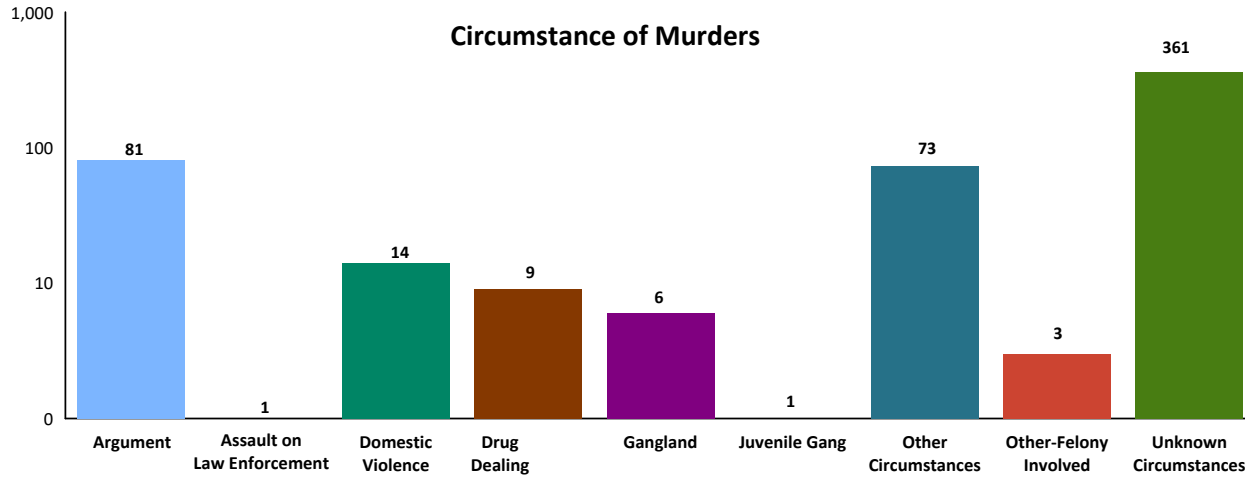
Race of Victims



Race Analysis

Sixty-nine percent of the victims were Black/African American. Twenty-eight percent of the victims were White.

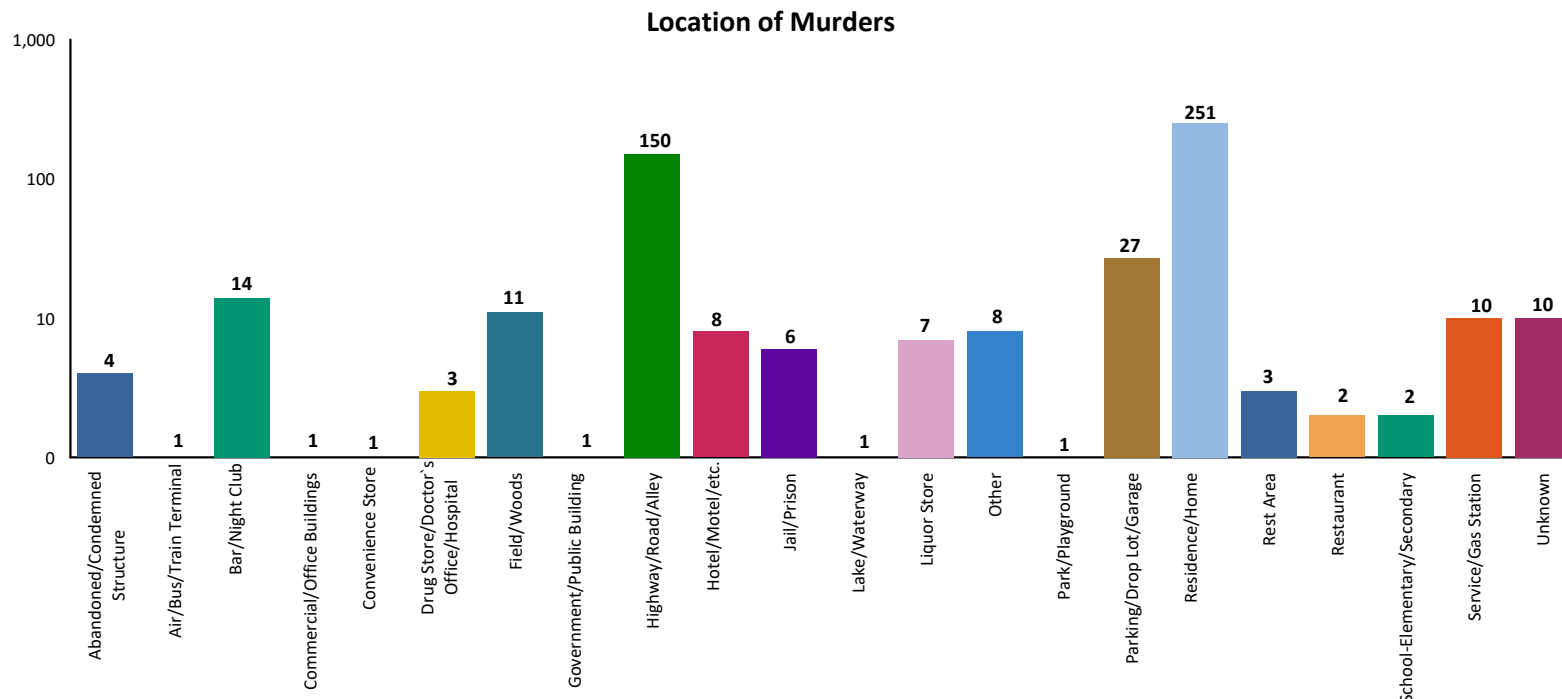
2019 Murder Non-Negligent Manslaughter



Murder Circumstances

Victim circumstance is defined as *someone who suffers ill consequences because of factors that were out of their control.*

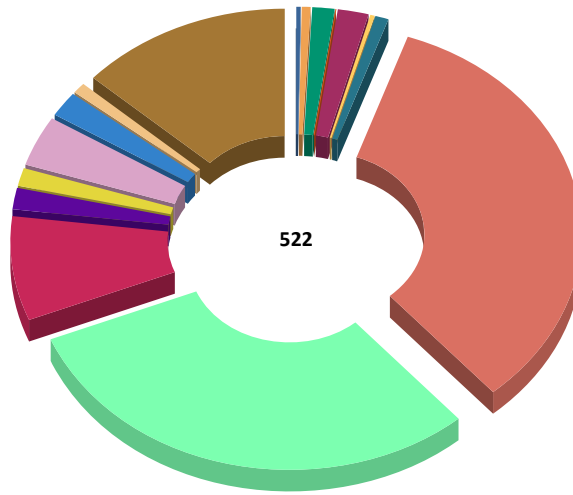
In 2019, 66 percent of the murders involved victim circumstances that could not be determined. Fifteen percent of the murders were preceded by an argument. "Other Circumstances" were reported in 13 percent of the murders.



Location of Murders

Forty-eight percent of these incidents occurred in a Residence/Home. Twenty-nine percent were reported to occur on a Highway/Road/Alley/Street/Sidewalk. Five percent of the murders occurred in a Parking/Drop Lot/Garage.

2019 Murder Non-Negligent Manslaughter

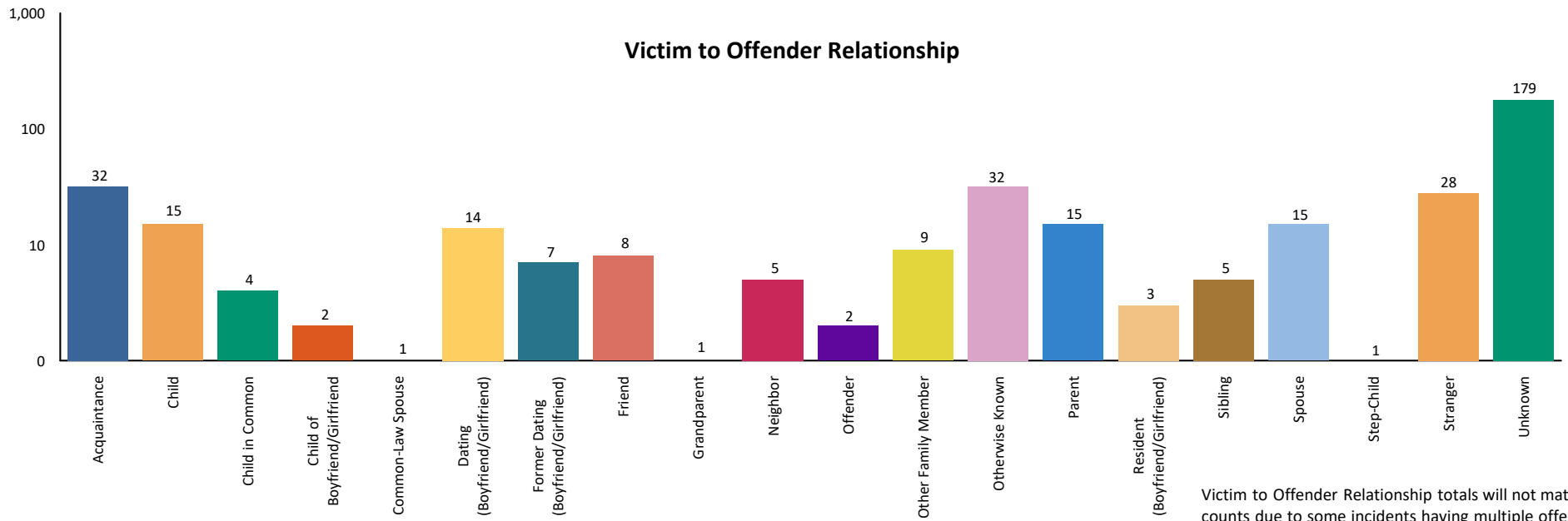


Weapon Used

Asphyxiation	1	0.2%
Automatic Firearm	4	0.8%
Automatic Handgun	6	1.1%
Automatic Rifle	1	0.2%
Blunt Object	10	1.9%
Drugs/Narcotics/Sleeping Pills	1	0.2%
Fire/Incendiary Devices	4	0.8%
Firearm	175	33.5%
Handgun	158	30.3%
Knife/Cutting Instrument	42	8.0%
Motor Vehicle	8	1.5%
Other	7	1.3%
Personal Weapon	21	4.0%
Rifle	10	1.9%
Shotgun	5	1.0%
Unknown	69	13.2%
Total:	522	100.0%

Weapon totals will not match the victim totals. The weapon is tied to the offense and not the victim.

Victim to Offender Relationship



Victim to Offender Relationship totals will not match the victim counts due to some incidents having multiple offenders but only one victim.

2019 Murder Non-Negligent Manslaughter Arrests

		Arrests By Age, Sex, and Race									Grand Total
		FEMALE				MALE					
		Black/African American	Unknown	White	Total	American Indian/Alaskan Native	Black/African American	Unknown	White	Total	
Age Group	Black/African American	Unknown	White	Total	American Indian/Alaskan Native	Black/African American	Unknown	White	Total	Grand Total	
Total Juveniles	13-14	0	0	0	0	0	1	1	0	2	2
	15	0	0	0	0	0	0	0	1	1	1
	16	0	0	0	0	0	1	0	0	1	1
	17	1	0	1	2	0	9	2	3	14	16
	Total	1	0	1	2	0	11	3	4	18	20
Total Adults	18	0	0	1	1	0	5	0	3	8	9
	19	0	0	0	0	0	10	0	1	11	11
	20	3	0	0	3	0	8	0	1	9	12
	21	3	0	0	3	0	10	0	3	13	16
	22	5	0	0	5	0	9	0	1	10	15
	23	2	1	0	3	0	11	0	3	14	17
	24	2	0	0	2	0	19	1	1	21	23
	25-29	8	0	6	14	0	55	0	14	69	83
	30-34	6	0	0	6	0	22	1	16	39	45
	35-39	5	0	3	8	1	27	0	10	38	46
	40-44	0	0	1	1	0	10	0	6	16	17
	45-49	1	0	0	1	0	7	0	3	10	11
	50-54	1	0	2	3	0	5	1	2	8	11
	55-59	1	0	0	1	0	3	0	2	5	6
	60-64	0	0	0	0	0	4	0	0	4	4
65 & Above	0	0	0	0	0	1	0	2	3	3	
Total	37	1	13	51	1	206	3	68	278	329	
Grand Total:	38	1	14	53	1	217	6	72	296	349	