

DEFINITION

Aggravated/Felonious Assault is an unlawful attack by one person upon another wherein the offender uses a weapon or displays it in a threatening manner, or the victim suffers obvious severe or aggravated bodily injury involving apparent broken bones, loss of teeth, possible internal injury, severe laceration, or loss of consciousness.

The use or attempted use of a dangerous weapon in an assault or the serious injury inflicted upon the victim is what separates this offense from assaults categorized as simple assaults.

ANALYSIS

VOLUME

The reported number of victims of Aggravated Assault in Michigan for 2016 was 29,976. This represents an increase of sixteen percent when compared to 2015. More persons were assaulted during the month of July. Fewer assaults occurred in the month of February. Seventeen percent of the victims were assaulted on Sundays.

CRIME RATE

The crime rate for this offense in 2016 was 302 assaults for every 100,000 persons, which is an increase of fifteen percent from 2015.

CLEARANCES

In 2016, 10,516 incidents were cleared by an arrest or exceptional clearance out of the 25,389 incidents reported. This equates to a forty-one percent clearance rate.

NATURE

Of the 29,976 victims, twenty percent of the assaults had a Personal Weapon, which includes, hands, fists, feet, etc., used against them. Eighteen percent involved a Knife/Cutting Instrument, seventeen percent of the assaults had a Handgun used, and fourteen percent involved a Blunt Object.

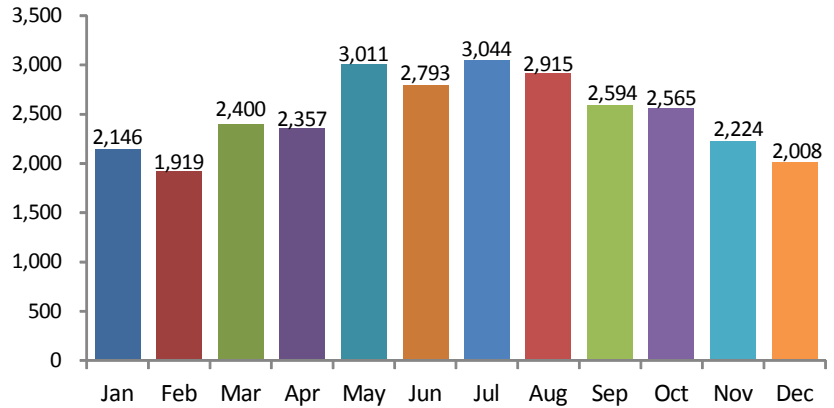
CIRCUMSTANCES

The Victim Circumstance that occurred most frequently was an Argument at fifty-eight percent. Unknown Circumstances happened in eighteen percent of the assaults, sixteen percent were Other Circumstances, five percent involved a Lover's Quarrel, and two percent were Assaults on a Law Enforcement Officer.

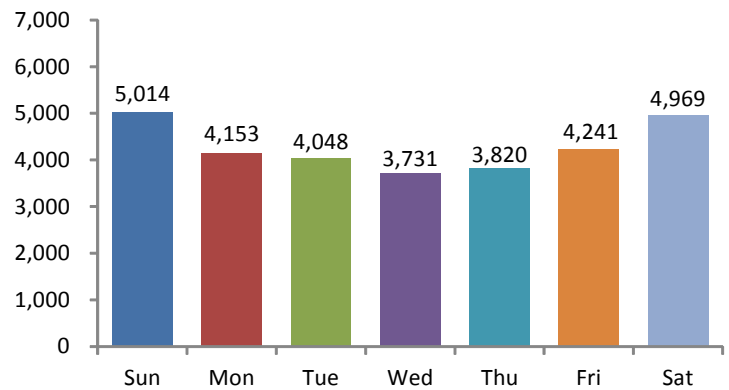
VICTIM INJURY

Forty-seven percent of the victims reported no injuries. Minor injuries were sustained by thirty-five percent of the victims, and seven percent of the victims received Other Major injuries.

Victims by Month

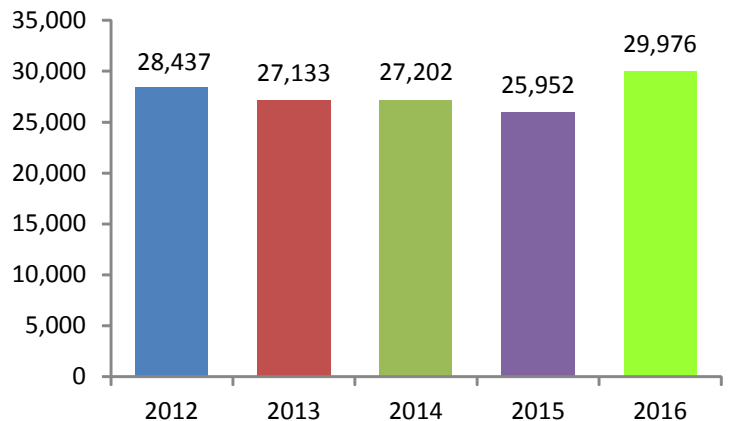


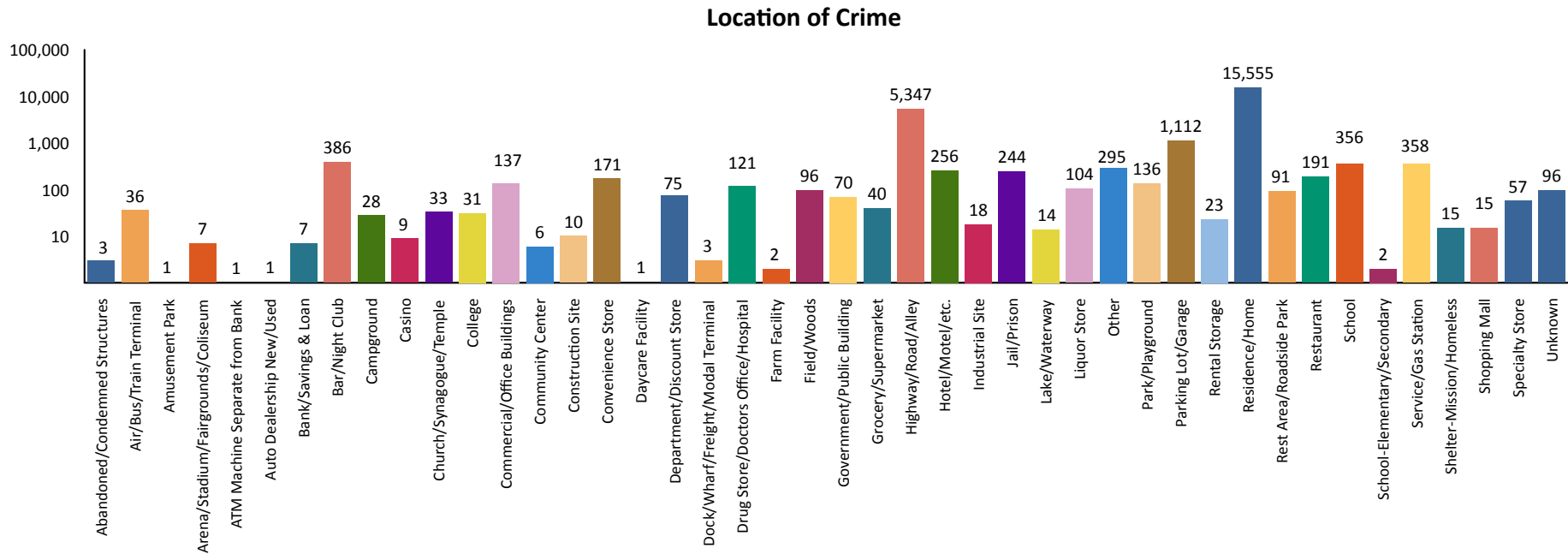
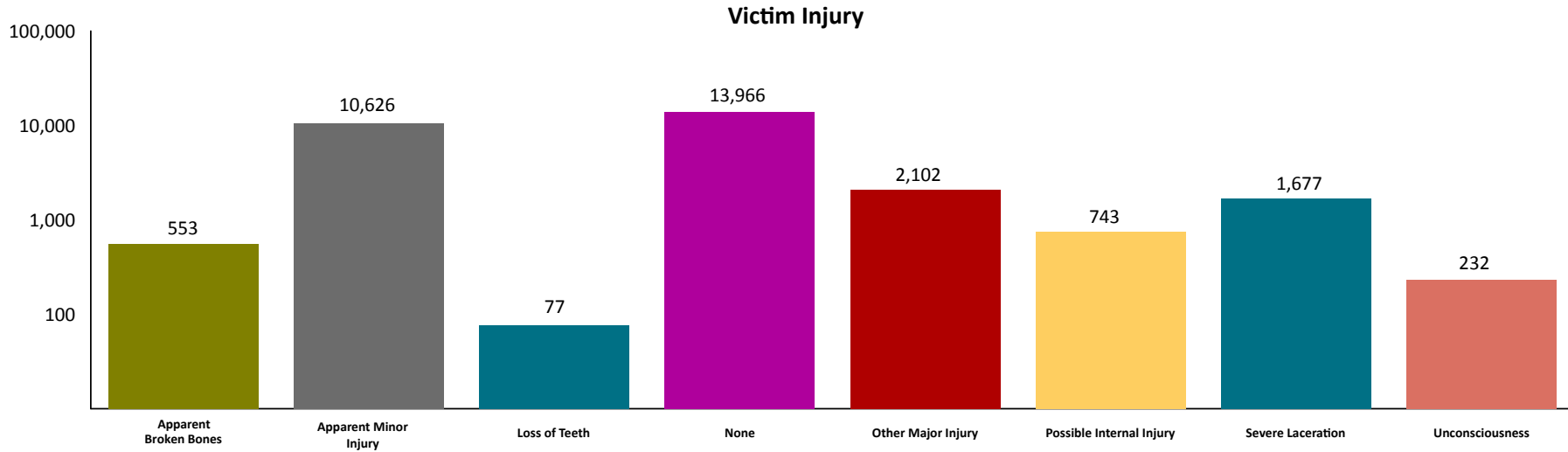
Victims by Day



5-Year Trend

Number of Victims

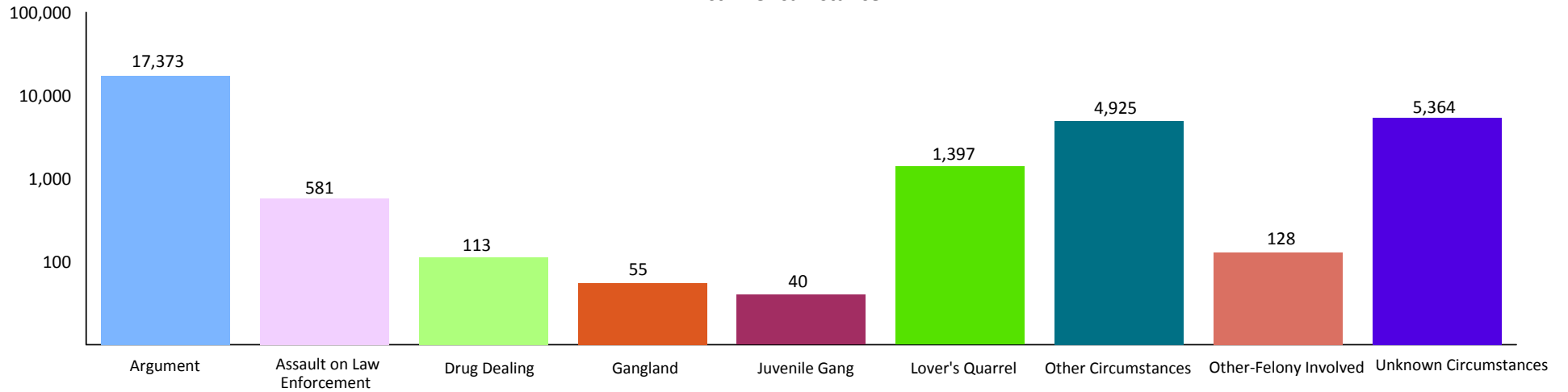




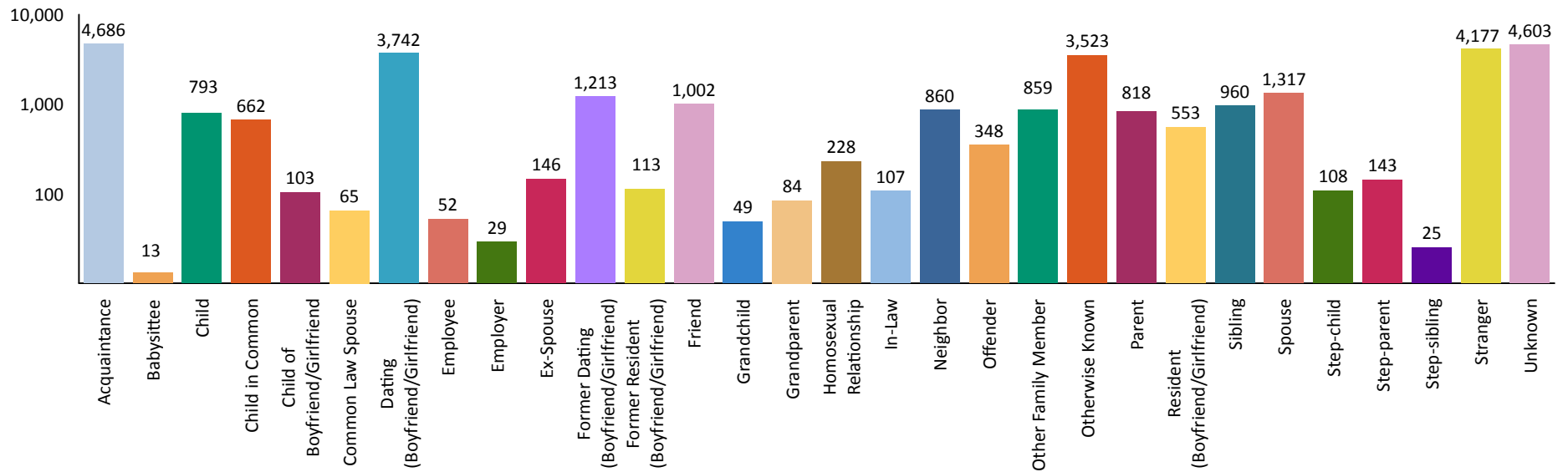
2016
Aggravated/Felonious
Assaults



Victim Circumstance

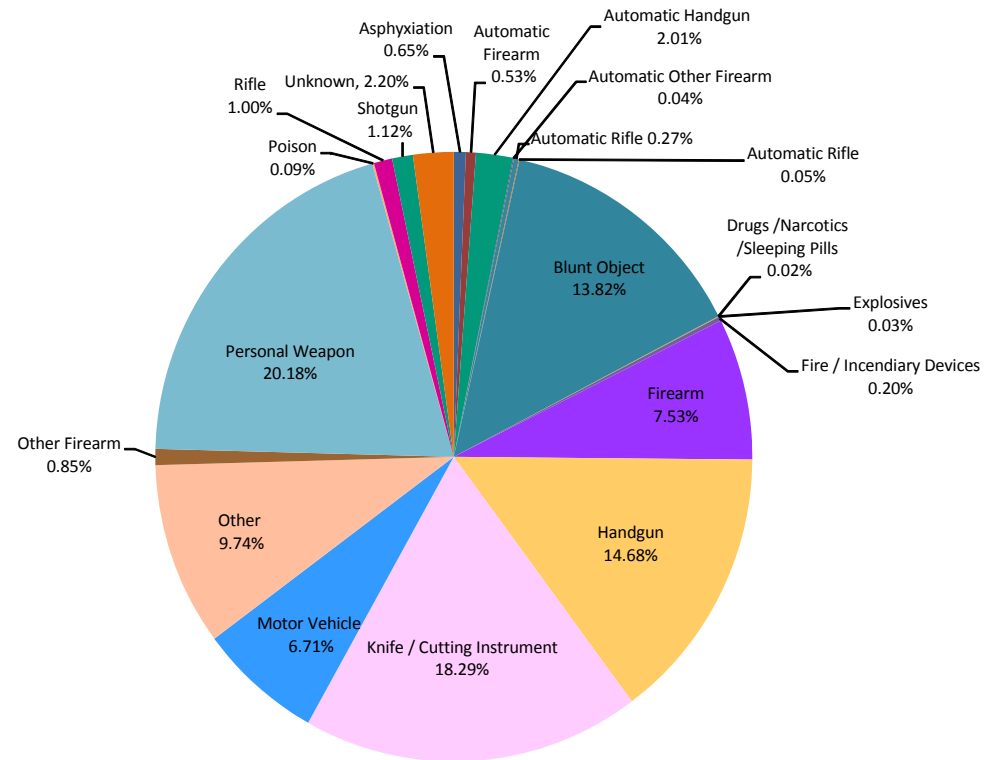
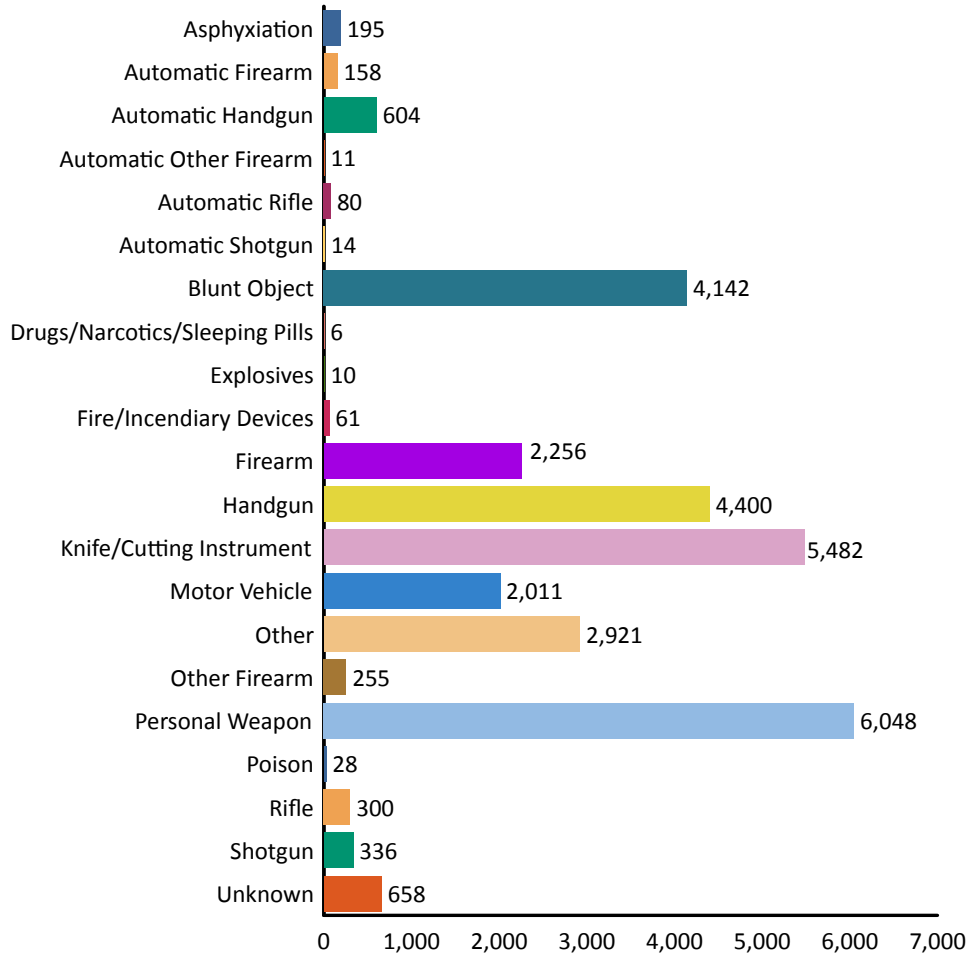


Victim to Offender Relationship



VOR totals will not match the victim totals due to some incidents having multiple offenders but only one victim.

Weapons Used



Age Group		Arrests By Age, Sex, and Race												Total
		FEMALE						MALE						
		American Indian/Alaskan	Asian/Pacific Islander	Black	Unknown	White	Total	American Indian/Alaskan	Asian/Pacific Islander	Black	Unknown	White	Total	
TOTAL JUVENILES	10 & Under	0	0	1	0	1	2	0	0	9	1	9	19	21
	11-12	1	0	7	0	4	12	0	1	21	0	25	47	59
	13-14	1	0	22	3	25	51	1	0	53	5	67	126	177
	15	0	0	33	1	15	49	0	0	36	2	37	75	124
	16	0	0	26	1	21	48	1	0	32	3	64	100	148
	Total	2	0	89	5	66	162	2	1	151	11	202	367	529
TOTAL ADULTS	17	0	0	34	3	18	55	0	0	63	2	83	148	203
	18	0	0	48	1	14	63	0	1	94	6	88	189	252
	19	0	0	43	2	33	78	0	1	88	4	116	209	287
	20	0	0	52	3	24	79	0	0	114	3	92	209	288
	21	0	0	70	2	34	106	0	2	112	5	96	215	321
	22	0	0	65	2	30	97	0	2	106	4	91	203	300
	23	0	0	67	2	36	105	1	0	137	6	116	260	365
	24	1	0	69	3	44	117	2	2	125	8	101	238	355
	25-29	0	4	265	9	194	472	6	6	553	24	584	1,173	1,645
	30-34	1	2	175	5	148	331	2	4	346	19	525	896	1,227
	35-39	0	0	116	4	99	219	8	0	321	13	430	772	991
	40-44	2	1	133	3	95	234	1	0	258	18	303	580	814
	45-49	1	2	108	3	75	189	1	4	237	11	288	541	730
	50-54	1	2	80	0	69	152	4	2	219	6	229	460	612
	55-59	2	0	54	3	36	95	1	0	176	6	154	337	432
	60-64	0	1	16	0	20	37	0	0	73	2	93	168	205
	65 & Above	0	2	14	0	15	31	2	1	73	4	82	162	193
Total	8	14	1,409	45	984	2,460	28	25	3,095	141	3,471	6,760	9,220	
Grand Total:	10	14	1,498	50	1,050	2,622	30	26	3,246	152	3,673	7,127	9,749	