



**DEFINITION**

Robbery is the taking or attempting to take anything of value under confrontational circumstances from the care, custody, or control of a person or persons by force, threat of force, or violence and/or by putting the victim in fear of immediate harm.

**ANALYSIS**

**VOLUME**

The number of robberies committed in Michigan in 2011 was 10,382. This is a reported decrease of 8.8 percent from 2010 and a 22.2 percent decrease since 2007.

The largest number of offenses occurred in the month of August and the least amount were committed in February.

**RATE**

The crime rate for this offense was 105 for every 100,000 persons. In 2010, the crime rate was 115, a decrease of 8.7 percent.

**CLEARANCES**

Law enforcement agencies cleared 1,681 incidents by an arrest or exceptional clearance of the 10,354 incidents reported. This calculates to a 16.2 percent clearance rate. This is the same percentage for 2010.

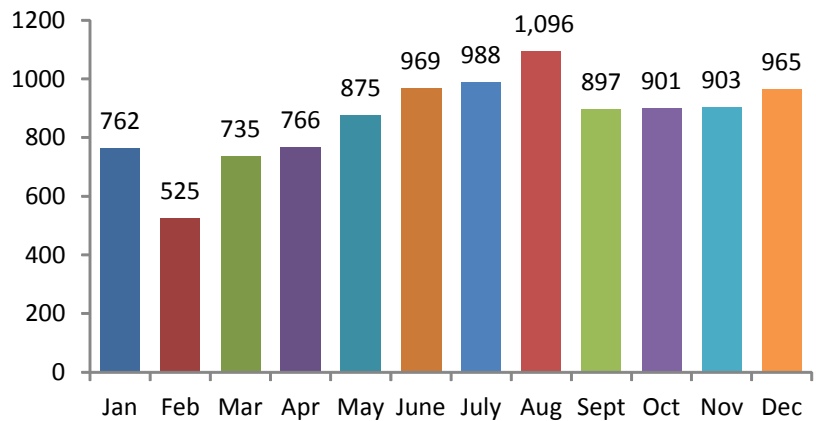
**NATURE**

In 2011, property loss during the commission of the robberies totaled \$14,454,967. Total property loss values for all property crimes was \$403,838,695. For robberies, this equates to 3.6 percent of this value.

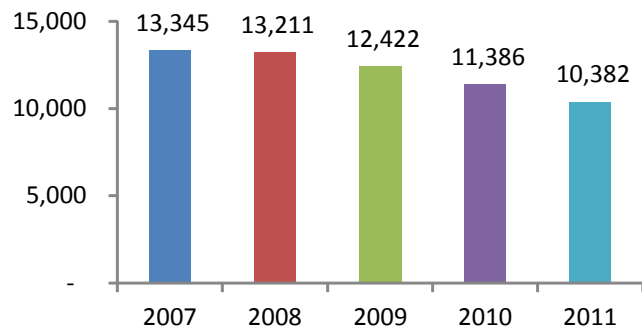
Robberies that occurred on Highway/Road/Alley accounted for 46.4 percent of the offenses. Residence/Home reported 14.9 percent of the offenses.

The weapon most used in the commission of these robberies was a handgun at 41.3 percent; this includes automated handguns. Personal weapons were used in 27 percent of the offenses.

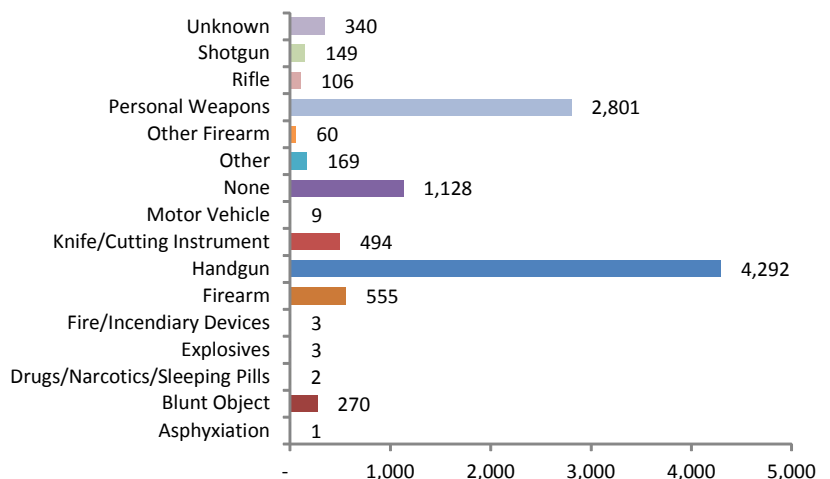
**Robberies by Month**



**5 Year Trends**



**Weapons Used**



**2011 ROBBERY ARRESTS**



		Arrests By Age, Sex, and Race									Total
		FEMALE			MALE						
		Black	White	Total	American Indian/Alaskan Native	Asian/Pacific Islander	Black	Unknown	White	Total	
Age Group	Black	White	Total	American Indian/Alaskan Native	Asian/Pacific Islander	Black	Unknown	White	Total	Total	
TOTAL JUVENILES	10 & Under	0	0	0	0	0	2	0	0	2	2
	11-12	0	1	1	0	0	6	0	0	6	7
	13-14	2	2	4	0	0	58	0	7	65	69
	15	2	3	5	0	0	86	1	9	96	101
	16	10	1	11	0	0	119	0	11	130	141
	<b>Total</b>	<b>14</b>	<b>7</b>	<b>21</b>	<b>0</b>	<b>0</b>	<b>271</b>	<b>1</b>	<b>27</b>	<b>299</b>	<b>320</b>
TOTAL ADULTS	17	7	5	12	0	0	165	3	27	195	207
	18	22	8	30	1	0	168	1	43	213	243
	19	14	3	17	0	0	156	2	34	192	209
	20	12	5	17	0	0	106	2	28	136	153
	21	10	4	14	0	0	89	1	21	111	125
	22	5	7	12	0	0	65	1	22	88	100
	23	10	1	11	0	0	34	0	21	55	66
	24	6	1	7	2	0	35	0	23	60	67
	25-29	11	18	29	0	1	106	5	81	193	222
	30-34	14	17	31	0	0	70	0	62	132	163
	35-39	10	10	20	0	0	57	0	32	89	109
	40-44	4	6	10	1	0	54	0	43	98	108
	45-49	5	3	8	0	0	42	0	21	63	71
	50-54	4	4	8	0	0	45	0	18	63	71
	55-59	1	0	1	0	0	11	0	5	16	17
	60-64	0	0	0	0	0	6	0	1	7	7
65 & Above	0	0	0	0	0	1	0	2	3	3	
<b>Total</b>	<b>135</b>	<b>92</b>	<b>227</b>	<b>4</b>	<b>1</b>	<b>1,210</b>	<b>15</b>	<b>484</b>	<b>1,714</b>	<b>1,941</b>	
<b>Grand Total:</b>	<b>149</b>	<b>99</b>	<b>248</b>	<b>4</b>	<b>1</b>	<b>1,481</b>	<b>16</b>	<b>511</b>	<b>2,013</b>	<b>2,261</b>	