

DEFINITION

Burglary-Forced Entry is the unlawful forcible entry of a building or other structure with the intent to commit a theft or felony. This does not apply to motor vehicles or coin boxes.

ANALYSIS

VOLUME

The number of burglaries with forced entry committed in 2018 was 25,510. This is a reported decrease of twelve percent from 2017 and a twenty-eight percent decrease since 2014.

The largest number of offenses occurred in the month of July. The least amount occurred in February.

RATE

The crime rate for this offense was 256 for every 100,000 persons. In 2017, the crime rate was 291 per 100,000 persons. This is a reported twelve percent decrease in the crime rate.

CLEARANCES

Law enforcement agencies cleared 3,005 incidents by an arrest or exceptional clearance out of the 25,071 incidents reported. This calculates to a twelve percent clearance rate.

NATURE

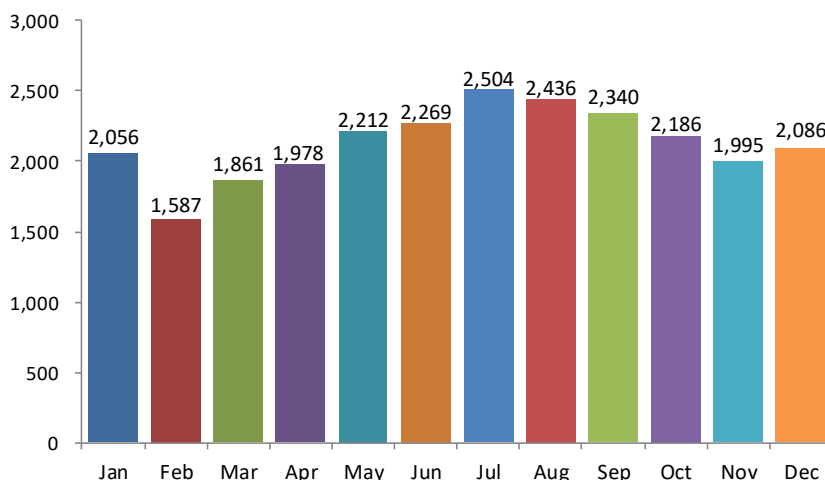
In 2018, seventy-five percent of these offenses occurred most often at a Residence/Home. Commercial/Office Buildings were burglarized four percent of the time. The majority of forced entry burglaries in 2018 occurred on Mondays. The least amount of offenses occurred on Saturdays.

OFFENDERS

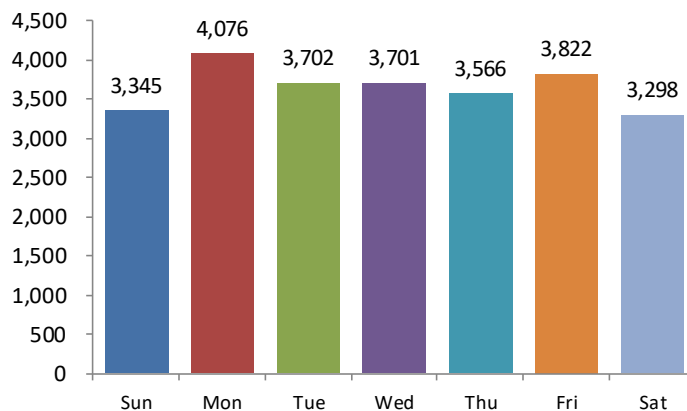
In sixty percent of the offenses reported to law enforcement agencies the suspect or offender was Unknown. Among the known offender information, eighty-two percent of the offenders were reported as Males and seventeen percent were Females.

Forty percent of the offenses were committed by White Males while ten percent were committed by White Females. Black/African American Males were involved in thirty-six percent of these offenses and Black/African American Females were involved in six percent of these offenses.

Offenses by Month

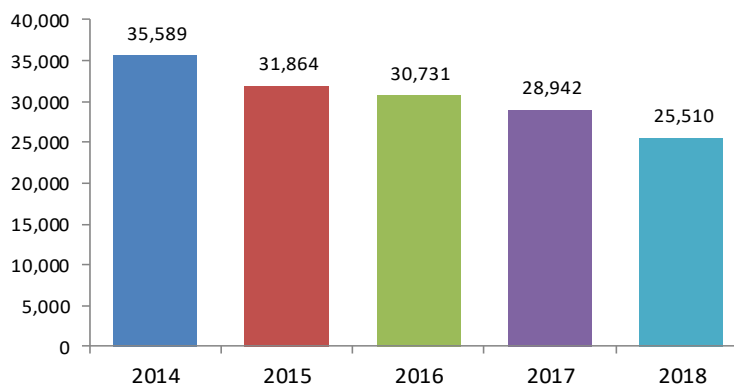


Offenses by Day



5-Year Trend

Number of Offenses





2018 Burglary-Forced Entry Arrests



		Arrests by Age, Sex, and Race												Total
		FEMALE						MALE						
		American Indian/Alaskan Native	Asian	Black/African American	Unknown	White	Total	American Indian/Alaskan Native	Asian	Black/African American	Unknown	White	Total	
Age Group														
Total Juveniles	10 & Under	0	0	0	0	0	0	0	0	1	0	5	6	6
	11-12	0	0	2	0	2	4	0	0	10	2	13	25	29
	13-14	0	0	1	0	2	3	0	0	35	2	40	77	80
	15	0	0	3	0	2	5	0	0	41	3	27	71	76
	16	0	0	1	0	2	3	0	0	24	0	48	72	75
	Total	0	0	7	0	8	15	0	0	111	7	133	251	266
Total Adults	17	0	0	9	0	7	16	1	0	57	6	83	147	163
	18	0	0	4	0	3	7	1	1	57	9	49	117	124
	19	0	0	7	0	8	15	0	0	42	1	59	102	117
	20	0	0	5	0	8	13	0	0	44	3	31	78	91
	21	0	0	4	0	7	11	0	0	33	2	32	67	78
	22	0	0	2	0	7	9	0	0	28	3	35	66	75
	23	1	0	5	0	4	10	1	0	28	4	29	62	72
	24	0	0	6	1	6	13	0	1	31	3	31	66	79
	25-29	0	1	29	2	37	69	1	1	162	11	200	375	444
	30-34	0	0	11	2	37	50	1	0	104	4	196	305	355
	35-39	0	0	9	2	40	51	1	1	68	6	156	232	283
	40-44	0	0	6	0	12	18	0	0	42	2	73	117	135
	45-49	0	0	2	0	13	15	1	0	43	3	60	107	122
	50-54	0	0	3	1	6	10	0	0	56	5	45	106	116
	55-59	0	0	2	0	6	8	1	0	23	0	41	65	73
	60-64	0	0	1	0	2	3	0	0	15	1	5	21	24
65 & Above	0	0	2	0	3	5	1	0	4	0	1	6	11	
Total	1	1	107	8	206	323	9	4	837	63	1,126	2,039	2,362	
Grand Total:	1	1	114	8	214	338	9	4	948	70	1,259	2,290	2,628	

DEFINITION

Burglary-Entry Without Force is the unlawful entry, without force, with the intent to commit a theft or other felony. This does not apply to motor vehicles or coin boxes.

ANALYSIS

VOLUME

The number of burglaries without forced entry committed in 2018 was 5,677. This is a reported decrease of eleven percent from 2017 and a twenty-four percent decrease since 2014.

The largest number of offenses occurred in the month of July and the least amount were committed in February.

RATE

The crime rate for this offense was 57 for every 100,000 persons. The crime rate was 64 for every 100,000 persons in 2017. This is a decrease of eleven percent.

CLEARANCES

Law enforcement agencies cleared 625 incidents by an arrest or exceptional clearance out of the 5,573 incidents reported. This calculates to an eleven percent clearance rate.

NATURE

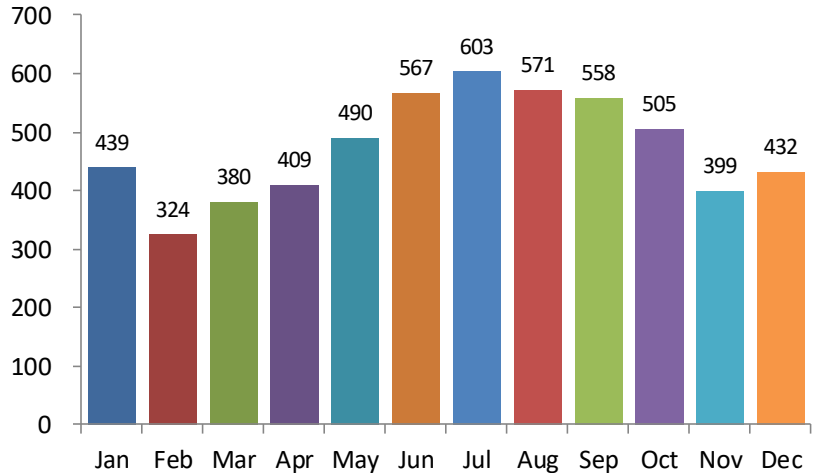
In 2018, eighty-four percent of these crimes occurred at a Residence/Home. Parking Lot/Garage was the location for three percent of the offenses. Burglaries without forced entry occurred most often on Mondays. The least number occurred on Sundays.

OFFENDERS

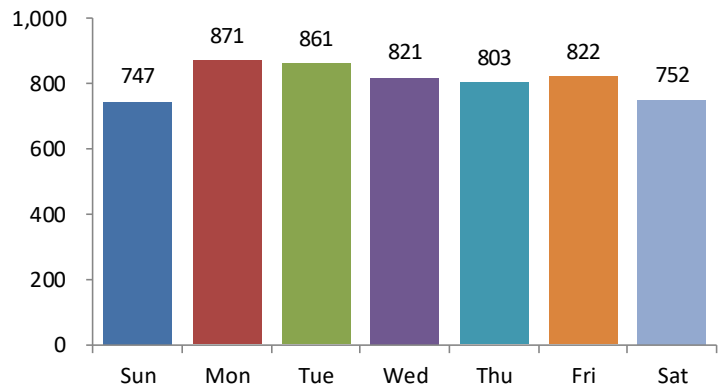
In fifty-five percent of the offenses reported to law enforcement agencies, the suspect or offender was Unknown. Among the offenses where offender information was known (2,818), Males were involved in seventy-six percent of these offenses and twenty-three percent involved Females.

Forty-four percent of the offenses were committed by White Males and fifteen percent were White Females. Black/African American Males were involved in twenty-six percent of these offenses and Black/African American Females were involved in seven percent of these offenses.

Offenses by Month

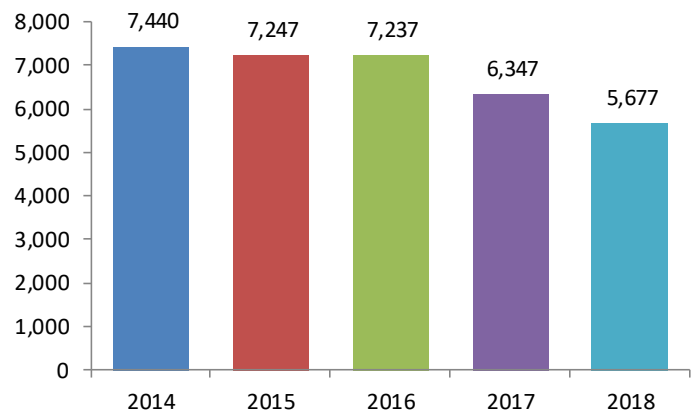


Offenses by Day



5-Year Trend

Number of Offenses





2018 Burglary- Entry Without Force Arrests



		Arrests by Age, Sex, and Race										Total
		FEMALE					MALE					
		American Indian/Alaskan Native	Black/African American	Unknown	White	Total	Asian	Black/African American	Unknown	White	Total	
Age Group												
Total Juveniles	10 & Under	0	0	0	1	1	0	1	0	0	1	2
	11-12	0	0	0	0	0	0	1	0	6	7	7
	13-14	0	0	1	1	2	0	3	1	12	16	18
	15	0	1	1	2	4	0	2	1	6	9	13
	16	0	1	0	3	4	0	4	0	5	9	13
	Total	0	2	2	7	11	0	11	2	29	42	53
Total Adults	17	0	0	0	0	0	0	4	0	14	18	18
	18	0	1	0	3	4	0	5	0	11	16	20
	19	0	0	0	3	3	0	6	0	8	14	17
	20	0	2	0	2	4	0	5	1	7	13	17
	21	0	2	0	4	6	0	1	1	4	6	12
	22	1	0	0	2	3	0	6	2	4	12	15
	23	0	1	0	1	2	0	6	1	5	12	14
	24	1	2	0	1	4	0	9	0	7	16	20
	25-29	0	0	0	8	8	1	25	1	31	58	66
	30-34	0	1	0	8	9	0	7	0	43	50	59
	35-39	0	0	0	8	8	0	8	1	24	33	41
	40-44	0	1	0	5	6	0	4	0	15	19	25
	45-49	0	1	0	8	9	0	4	0	13	17	26
	50-54	0	0	0	3	3	0	8	1	7	16	19
	55-59	0	1	0	0	1	0	4	0	7	11	12
	60-64	0	0	0	0	0	0	0	0	1	1	1
	65 & Above	0	1	0	0	1	0	0	0	2	2	3
Total	2	13	0	56	71	1	102	8	203	314	385	
Grand Total:	2	15	2	63	82	1	113	10	232	356	438	