



DEFINITION

Motor Vehicle Theft is the theft or attempted theft of a self-propelled vehicle that runs on land and not on rails. "Joy Riding" is included in this classification. Carjacking is not included, it is classified as a Robbery.

ANALYSIS

VOLUME

The number of motor vehicle theft offenses committed in Michigan for 2011 was 25,048. This is a reported decrease of 6.8 percent from 2010 and a 39.6 percent decrease since 2007.

The largest number of offenses occurred in the month of July and the least amount were committed in February.

RATE

The crime rate for this offense was 253 for every 100,000 persons. In 2010, the crime rate was 272 per 100,000 persons.

CLEARANCES

Law enforcement agencies cleared 1,822 incidents by an arrest or exceptional clearance out of the 24,618 incidents reported. This calculates to a 7.4 percent clearance rate. In 2010, the clearance rate was 7.1 percent.

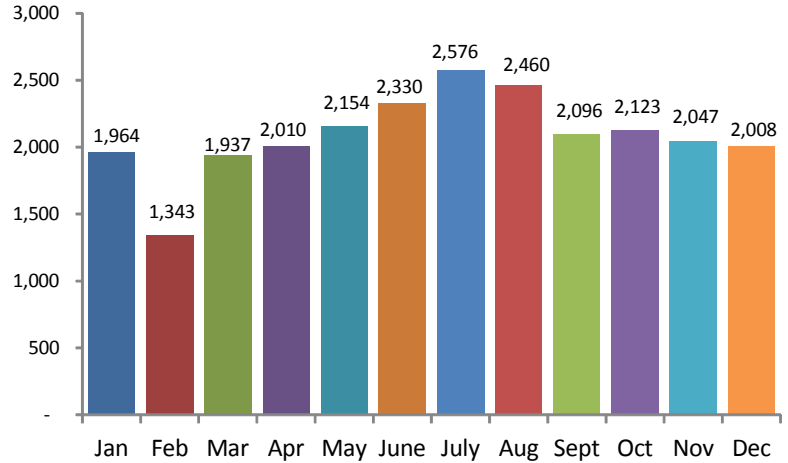
NATURE

In 2011, 24,048 actual vehicles were stolen. There were 1,482 attempted offenses. The FBI determines the total number of vehicles stolen by combining these two figures. That would mean that 25,530 Motor Vehicle Thefts occurred in 2011. Total property loss values for all motor vehicles was \$101,230,097.

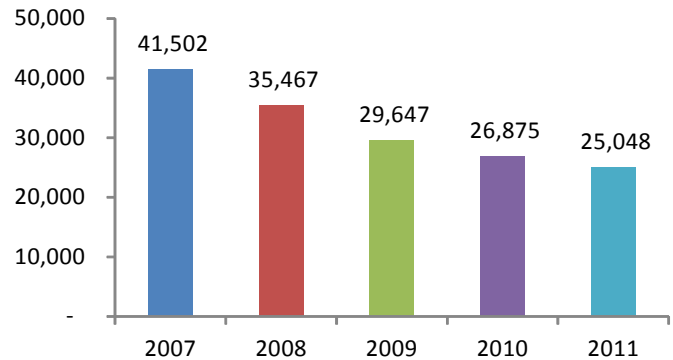
More vehicles are stolen on Mondays than any other day of the week.

Vehicle Type	# Stolen	# Recovered	Recovery Rate
Automobiles	19,948	9,660	48.4%
Buses	5	5	100.0%
Other Motor Vehicles	1,504	340	22.6%
Trucks	2,239	75	3.3%
Recreational Vehicles	352	1,190	338.1%
Grand Totals	24,048	11,270	46.9%

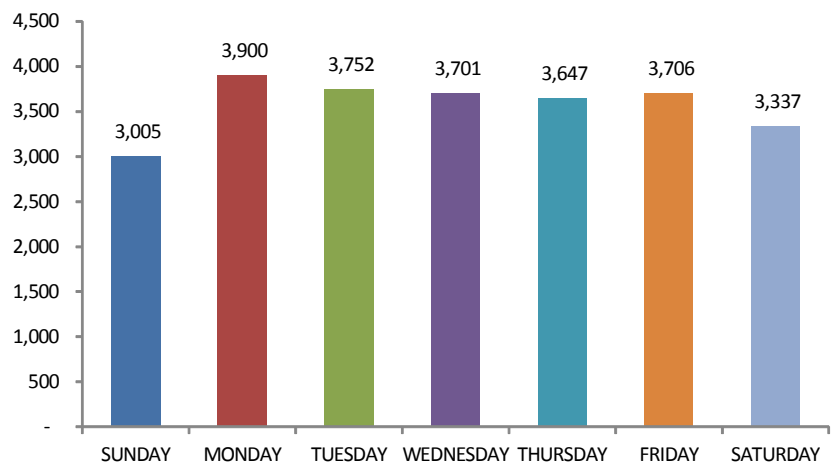
Offenses by Month



5 Year Trends



Day of the Week



**2011 MOTOR VEHICLE THEFT
ARRESTS**



Age Group		Arrests By Age, Sex, and Race										Total
		FEMALE				MALE						
		Black	Unknown	White	Total	American Indian/Alaskan Native	Asian/Pacific Islander	Black	Unknown	White	Total	
TOTAL JUVENILES	10 & Under	0	0	0	0	0	0	0	0	1	1	1
	11-12	0	0	0	0	0	1	0	0	4	5	5
	13-14	4	0	9	13	0	0	36	0	22	58	71
	15	6	0	4	10	0	0	53	2	26	81	91
	16	11	0	6	17	0	0	64	1	25	90	107
	Total	21	0	19	40	0	1	153	3	78	235	275
TOTAL ADULTS	17	5	0	9	14	0	0	137	1	46	184	198
	18	10	0	5	15	0	1	102	1	34	138	153
	19	8	1	12	21	0	0	95	3	44	142	163
	20	12	0	4	16	0	0	61	0	28	89	105
	21	7	0	5	12	0	0	55	1	30	86	98
	22	4	0	5	9	1	0	36	2	32	71	80
	23	8	0	4	12	0	0	37	1	28	66	78
	24	3	0	2	5	0	0	27	1	18	46	51
	25-29	19	1	9	29	2	0	101	0	73	176	205
	30-34	11	3	20	34	0	1	50	5	59	115	149
	35-39	14	1	9	24	1	0	46	3	32	82	106
	40-44	9	0	9	18	0	0	52	0	42	94	112
	45-49	2	0	9	11	1	0	55	1	30	87	98
	50-54	1	0	3	4	0	0	18	1	18	37	41
	55-59	1	0	2	3	0	0	13	1	6	20	23
	60-64	0	0	0	0	0	0	4	0	0	4	4
65 & Above	0	0	0	0	0	0	3	0	2	5	5	
Total	114	6	107	227	5	2	892	21	522	1,442	1,669	
Grand Total:	135	6	126	267	5	3	1,045	24	600	1,677	1,944	