



DEFINITION

In Michigan, Arson is defined as to unlawfully and intentionally damage, or attempt to damage, any real or personal property by fire or incendiary devices.

ANALYSIS

VOLUME

The number of arson offenses reported in Michigan for 2011 was 2,632. This is a reported decrease of 10 percent from 2010 and a 11.6 percent decrease since 2007.

The largest number of offenses occurred in the month of July and the least amount were committed in February.

RATE

The crime rate for this offense was 27 for every 100,000 persons. In 2010, the crime rate was 30 per 100,000 persons.

CLEARANCES

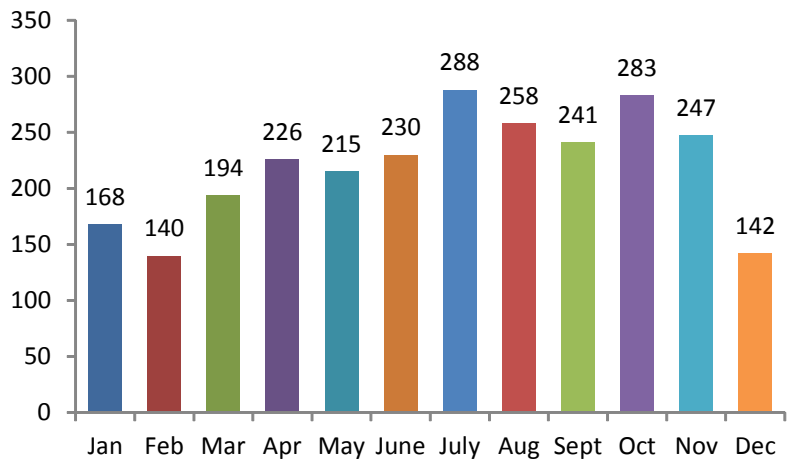
Law enforcement agencies cleared 260 incidents by an arrest or exceptional clearance out of the 2,529 incidents reported. This calculates to a 10.3 percent clearance rate. In 2010, the clearance rate was 8.3 percent.

NATURE

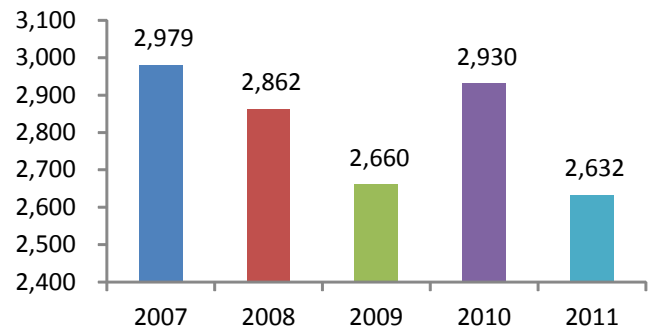
In 2011, arson victims suffered losses totaling \$20,501,815. Structures as a whole experienced a loss of \$16,681,854. Single occupancy structures suffered the most loss at \$10,451,647. This equates to 51 percent of the total value lost. Other dwelling structures reported 12.9 percent of the value at \$2,642,580. Other Commerical/Business structures suffered losses totaling \$2,067,675, 10 percent of the total value.

Seventeen (17) percent of the arsons were committed on Sundays in 2011. While Thursdays reported the least amount of arsons, 12 percent.

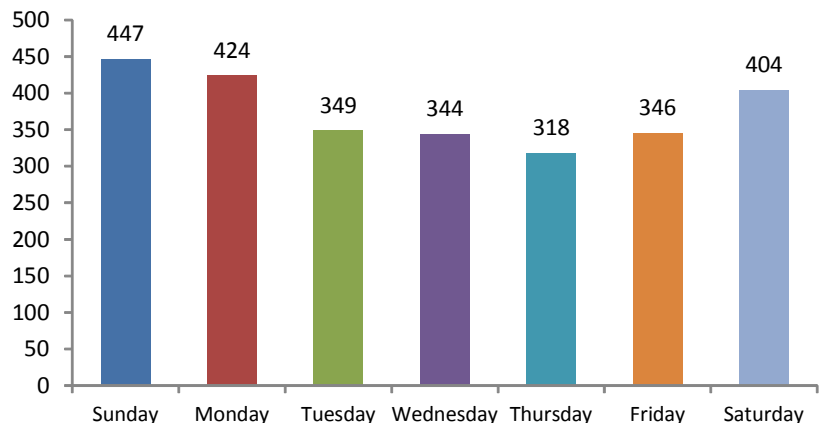
Offenses by Month



5 Year Trends



Day of the Week





Age Group		Arrests By Age, Sex, and Race									Grand Total
		FEMALE			MALE						
		Black	White	Total	American Indian/Alaskan Native	Asian/Pacific Islander	Black	Unknown	White	Total	
TOTAL JUVENILES	10 & Under	0	1	1	1	0	0	0	4	5	6
	11-12	1	4	5	0	0	4	0	4	8	13
	13-14	1	2	3	0	0	5	0	15	20	23
	15	0	1	1	0	0	2	0	10	12	13
	16	1	1	2	0	0	2	0	7	9	11
	Total	3	9	12	1	0	13	0	40	54	66
TOTAL ADULTS	17	3	0	3	0	0	2	1	14	17	20
	18	0	2	2	0	0	5	1	7	13	15
	19	0	1	1	0	0	5	1	4	10	11
	20	1	1	2	0	0	3	0	8	11	13
	21	0	0	0	0	0	2	1	5	8	8
	22	1	0	1	0	0	1	0	5	6	7
	23	0	0	0	0	0	2	0	4	6	6
	24	4	0	4	0	0	2	0	3	5	9
	25-29	7	2	9	0	1	10	1	11	23	32
	30-34	2	1	3	0	0	7	0	10	17	20
	35-39	3	1	4	0	0	1	0	5	6	10
	40-44	1	2	3	0	0	2	0	16	18	21
	45-49	3	2	5	0	0	4	0	8	12	17
	50-54	0	1	1	0	0	5	0	5	10	11
	55-59	0	1	1	0	0	1	0	4	5	6
	60-64	0	1	1	0	0	1	0	2	3	4
65 & Above	0	0	0	0	0	0	0	1	1	1	
Total	25	15	40	0	1	53	5	112	171	211	
Grand Total:	28	24	52	1	1	66	5	152	225	277	