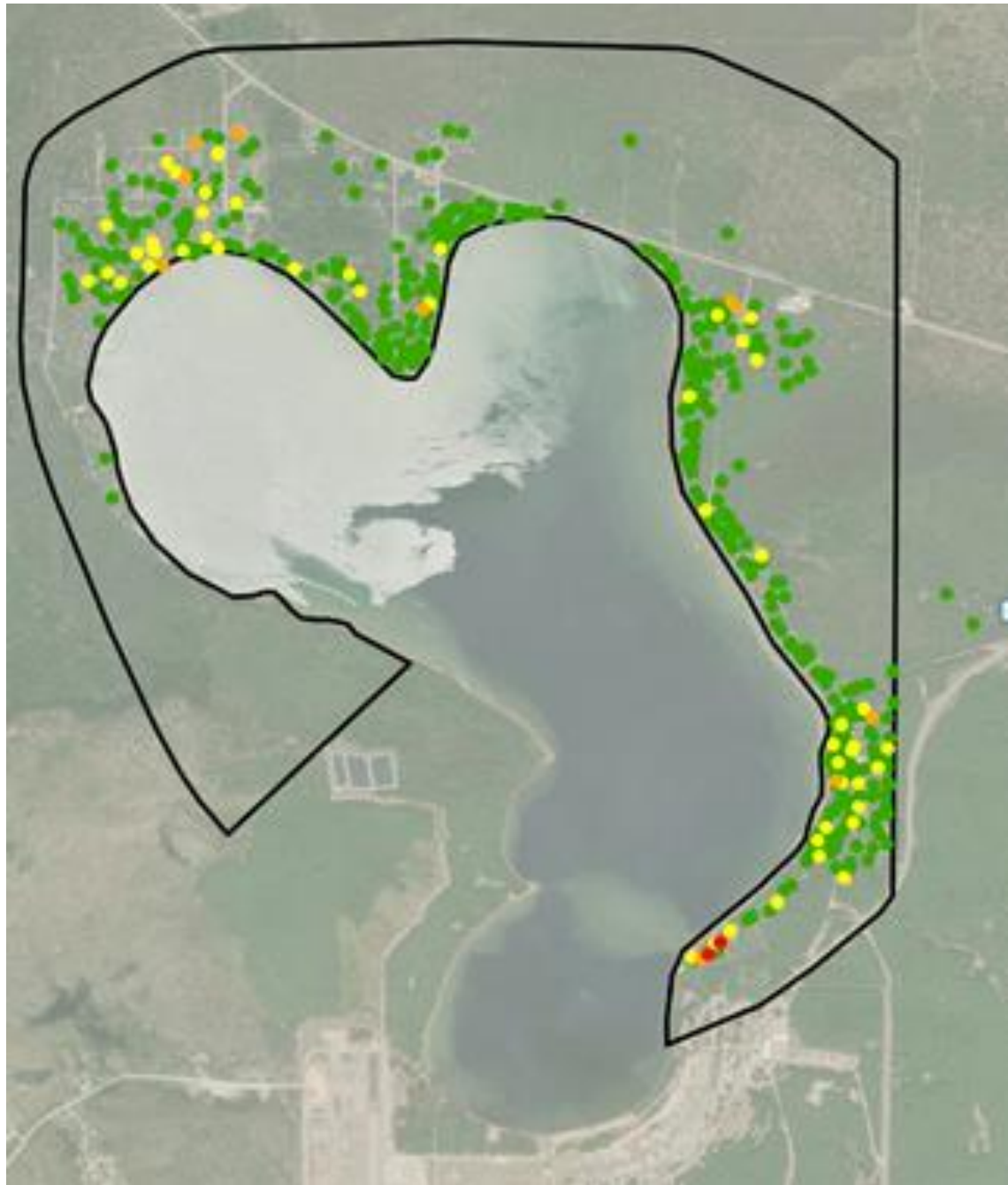


CAMP GRAYLING – LAKE MARGRETHE PFAS INVESTIGATION

Type of Sample	Criteria	Total Number of Samples	Number of Non-Detects	Number of Detections Below Criteria	Number of Detections Above Criteria
Drinking Water Well	PFOA + PFOS > 70 ppt	447	384	61	2

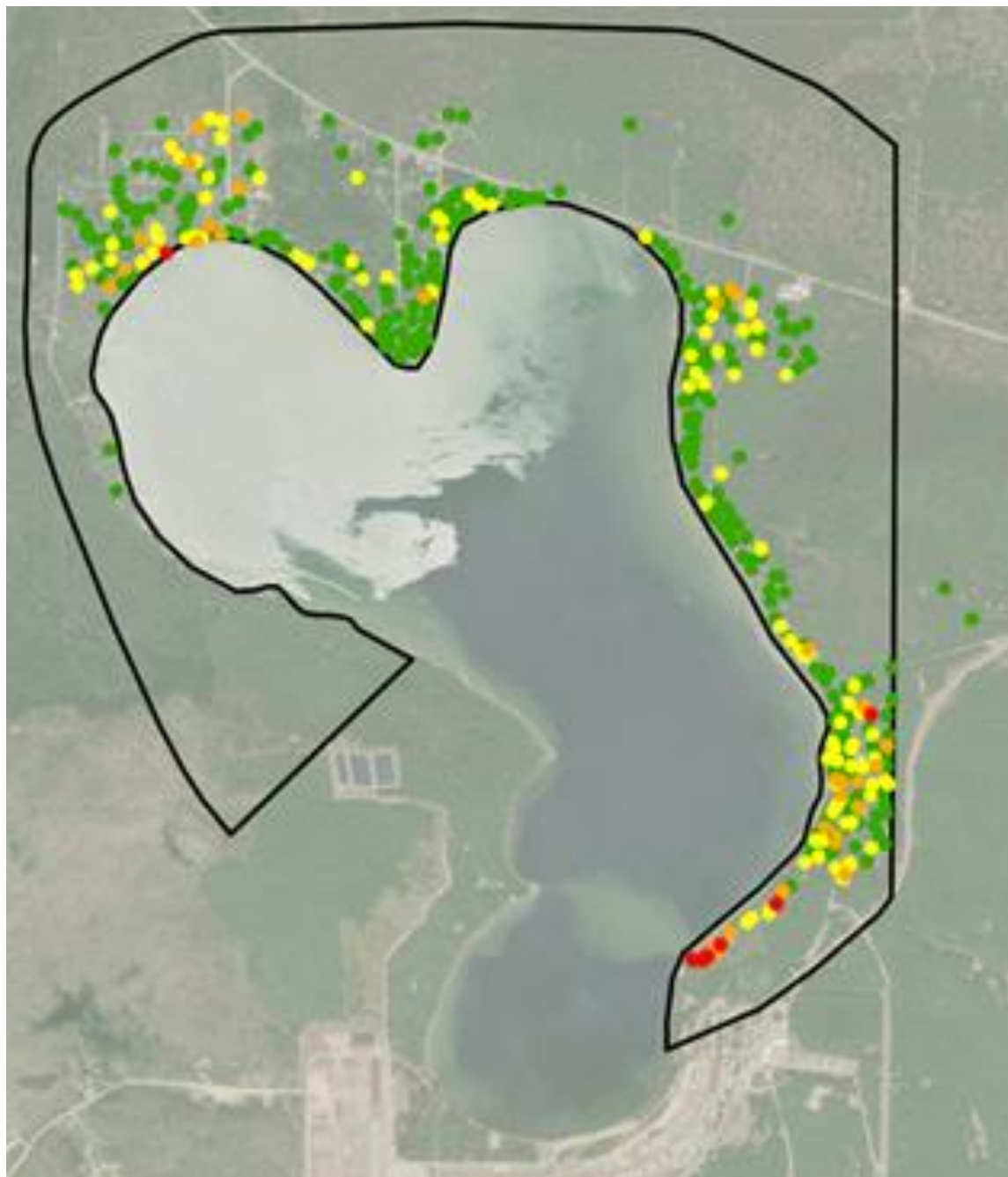


Legend

**Drinking Water Sample Locations
PFOA + PFOS (447 Samples)**

- Non-Detect (384)
- >0 to 10 ppt (50)
- >10 to 70 ppt (11)
- >70 ppt (2)

□ **Lake Margrethe Sampling Area**



Legend

**Drinking Water Sample Locations
Total PFAS (447 Samples)**

- Non-Detect (307)
- >0 to 10 ppt (99)
- >10 to 70 ppt (31)
- >70 ppt (10)

□ **Lake Margrethe Sampling Area**

Type of Sample	Criteria	Total Number of Samples	Number of Non-Detects	Number of Detections Below Criteria	Number of Detections Above Criteria
Groundwater Monitoring Well	PFOA + PFOS > 70 ppt	14	4	7	3

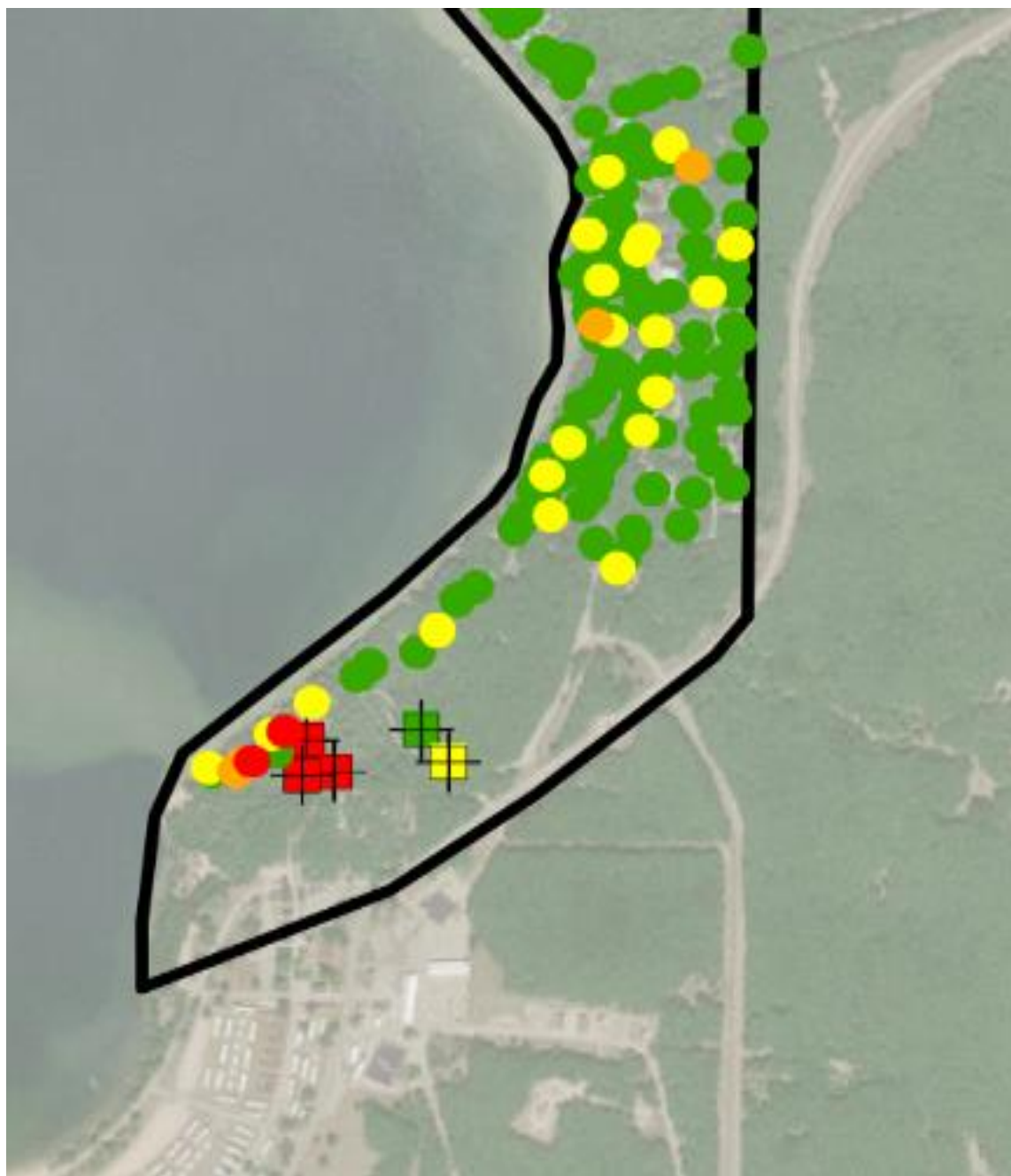


➤ Phase I Fieldwork

- 5 locations
- 14 permanent monitoring wells
- 1 Staff Gauge
- Groundwater samples collected September 2018.

Legend

- ⊠ Phase I Monitoring Well Locations
- Staff Gauge
- ⌚ Lake Margrethe Sampling Area



Legend

Permanent Monitoring Well Locations

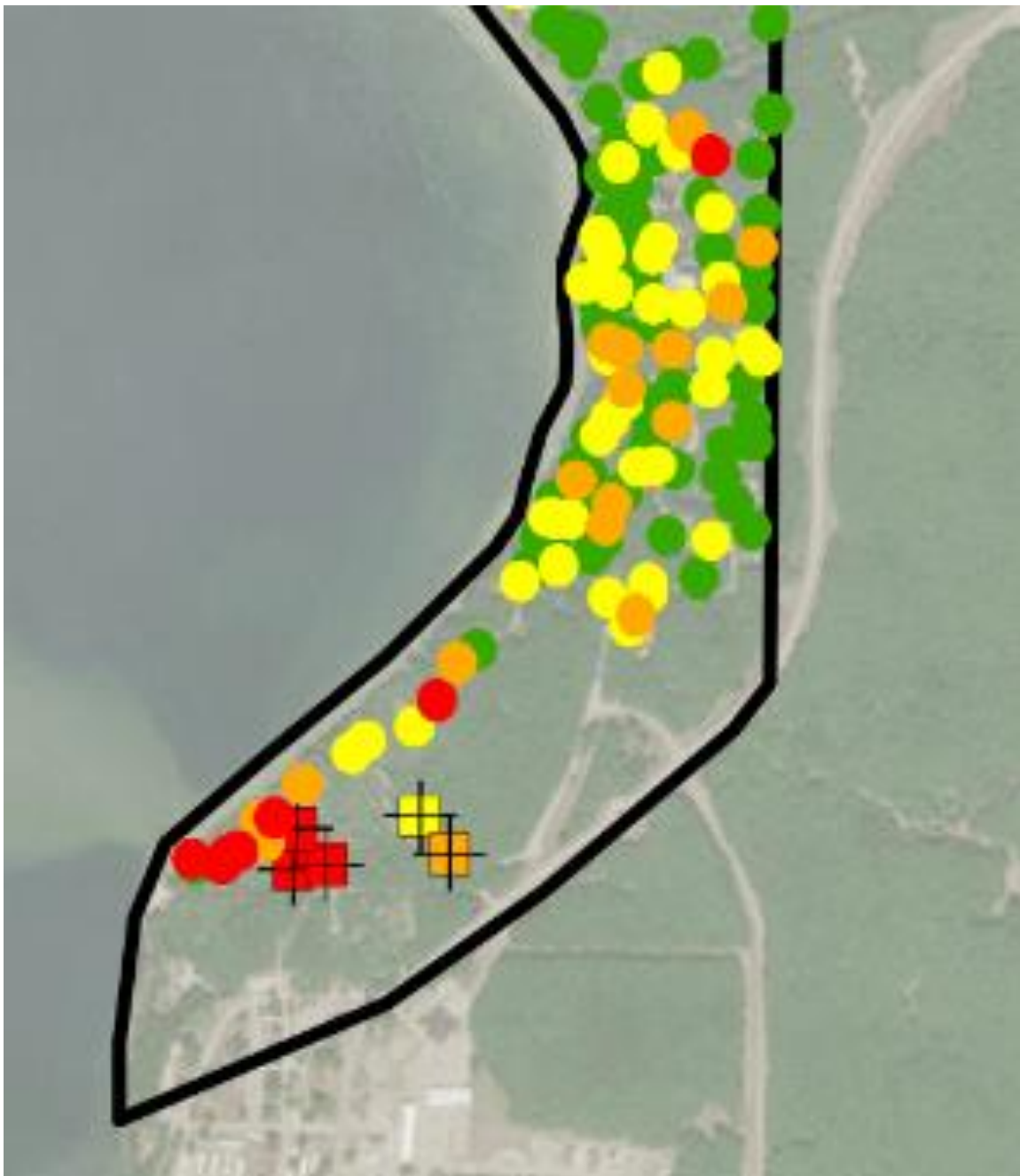
PFOA+PFOS

- Non-Detect
- >0 to 10 ppt
- >10 to 70 ppt
- >70 ppt

Drinking Water Sample Locations

- Non-Detect
- >0 to 10 ppt
- >10 to 70 ppt
- >70 ppt

□ Lake Margrethe Sampling Area



Legend

Permanent Monitoring Well Locations

Total PFAS

- Non-Detect
- >0 to 10 ppt
- >10 to 70 ppt
- >70 ppt

Drinking Water Sample Locations

- Non-Detect
- >0 to 10 ppt
- >10 to 70 ppt
- >70 ppt

□ Lake Margrethe Sampling Area

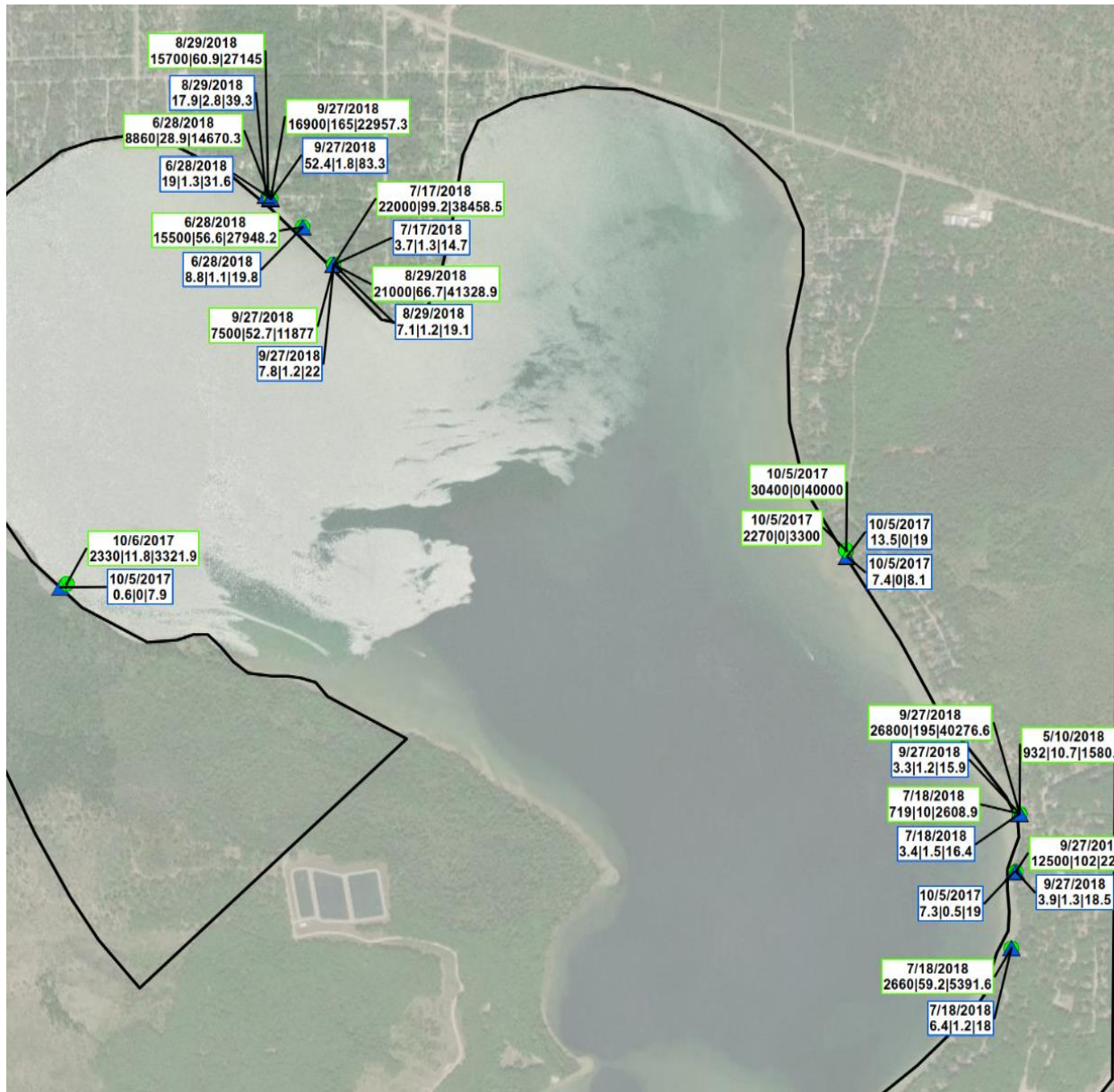
Legend

- ⊕ Phase I Monitoring Well Locations
- Groundwater Contour (2-ft interval)
- Lake Margrethe Sampling Area



Type of Sample	Criteria	Total Number of Samples	Number of Non-Detects	Number of Detections Below Criteria	Number of Detections Above Criteria
Surface Water	PFOS > 12 ppt	15	0	11	4
Foam	N/A*	15	0	N/A	N/A

*The MDEQ has not developed foam criteria.



➤ Foam

- PFOS: 719 – 30,400 ppt
- Total PFAS: 1,580 – 41,328 ppt

➤ Surface Water

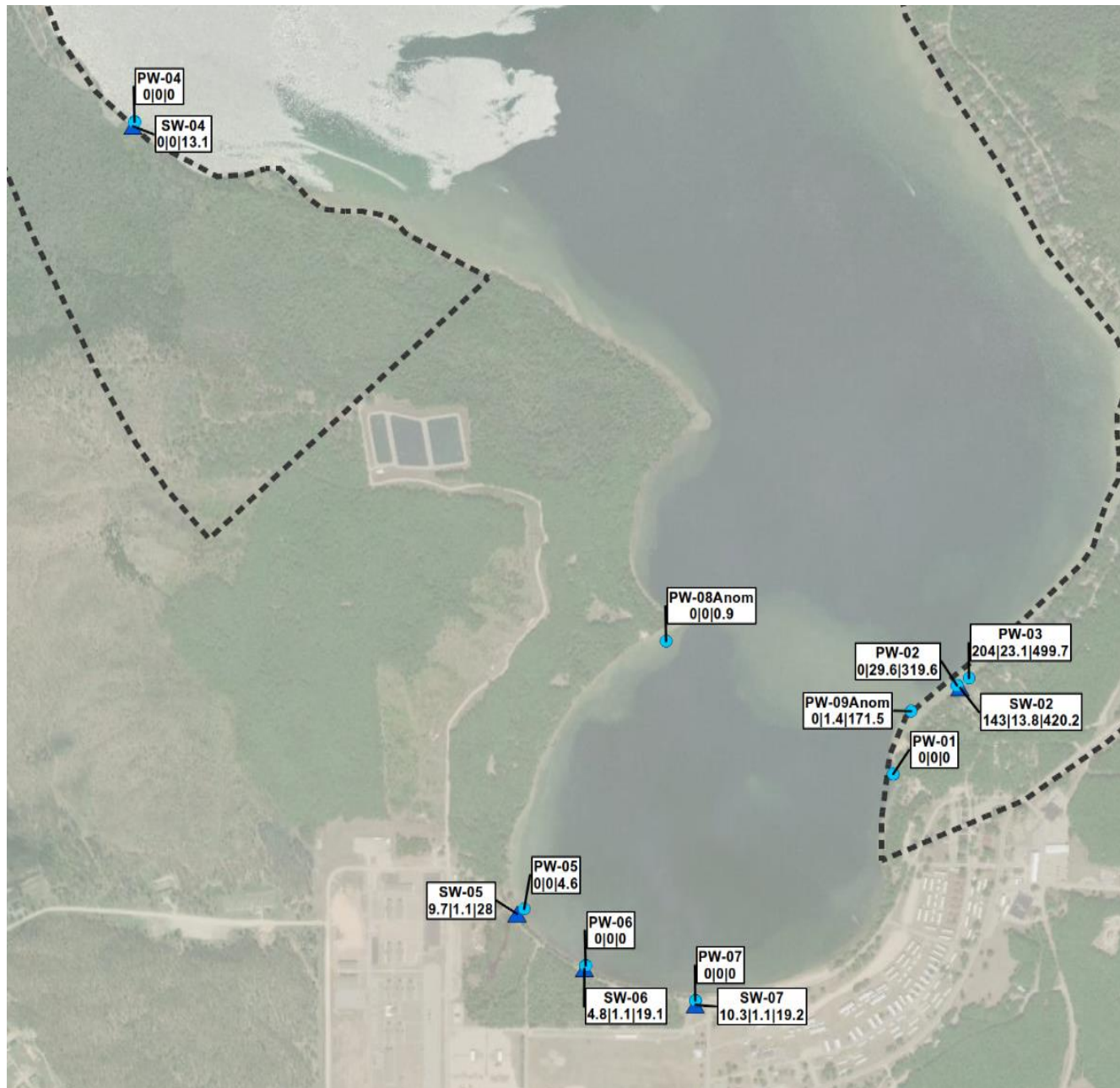
- PFOS: 0.6 – 52.4 ppt
- Total PFAS: 7.9 – 83.3 ppt

Legend

- Foam Sample Location
- ▲ Surface Water Sample Location
- Lake Margrethe Sampling Area

Sample Date
PFOS PFOA Total PFAS

Type of Sample	Criteria	Total Number of Samples	Number of Non-Detects	Number of Detections Below Criteria	Number of Detections Above Criteria
Pore Water	PFOS > 12 ppt	9	8	0	1
Surface Water	PFOS > 12 ppt	5	1	3	1



➤ Pore Water

- PFOS: 0 – 204 ppt
- Total PFAS: 0 – 499.7 ppt

➤ Surface Water

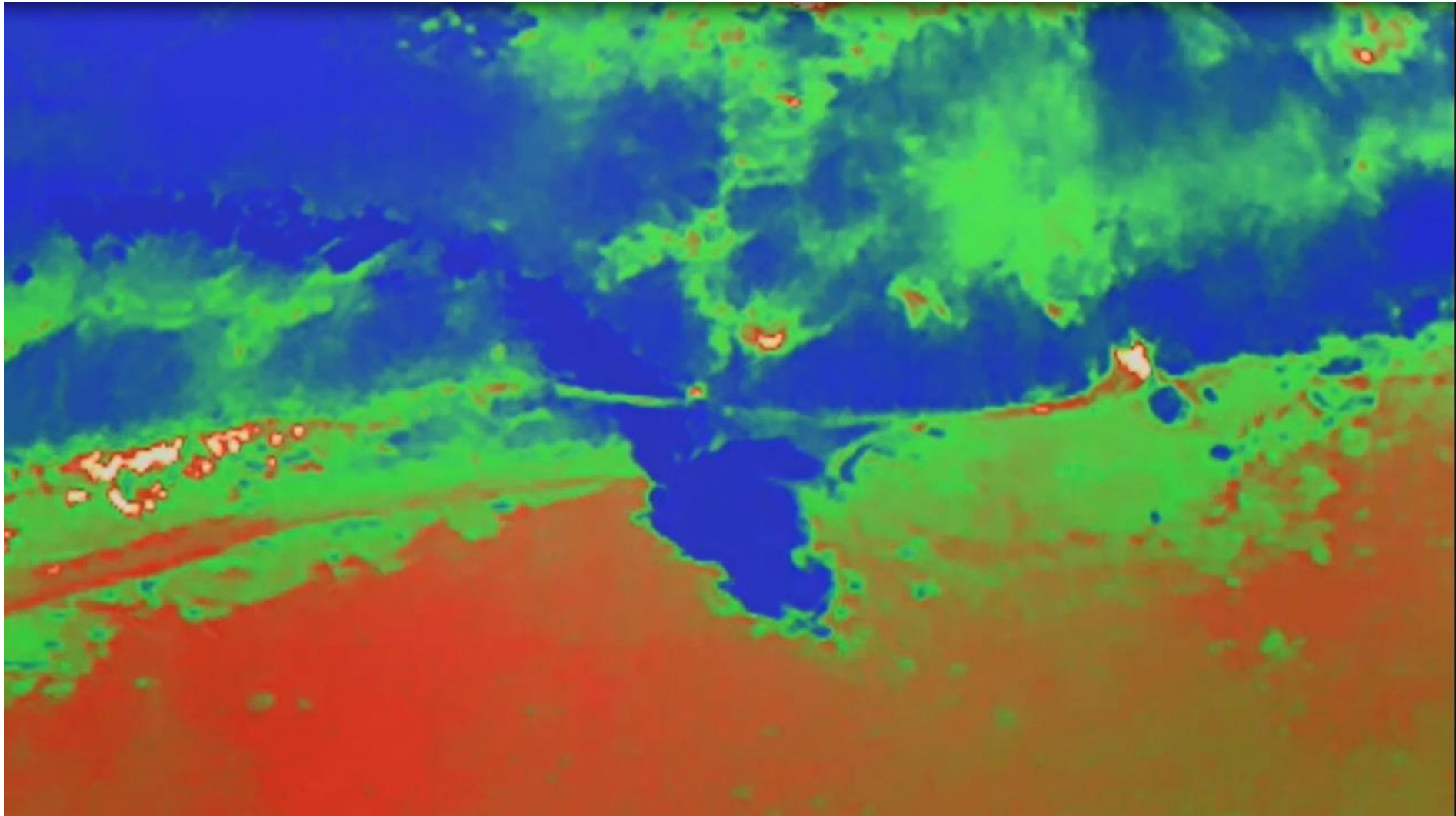
- PFOS: 0 – 143 ppt
- Total PFAS: 0 – 420.2 ppt

Legend

- Pore Water Sample Location
- ▲ Surface Water Sample Location
- ⌚ Lake Margrethe Sampling Area

Sample Date
PFOS PFOA Total PFAS





➤ Residential Drinking Water Sampling

- Continuing to schedule residents that request sampling in **Sample Area**.
- Continue to collect foam samples from Lake Margrethe in **new areas**.

➤ Remedial Investigation

- Quarterly Groundwater sampling of monitoring wells.
- Remedial Investigation Report, Spring 2019.
- Evaluating additional groundwater investigation.

Randy Rothe
District Supervisor
D: (989) 705-3416
Email: ROTHER@michigan.gov

Leah MacDonald
District Secretary & FOIA Liaison
D: (989) 705-3445
Email: MacDonaldL1@michigan.gov

David Lindsay
Project Manager
D: (989) 705-3447
Email: LINDSAYD@michigan.gov