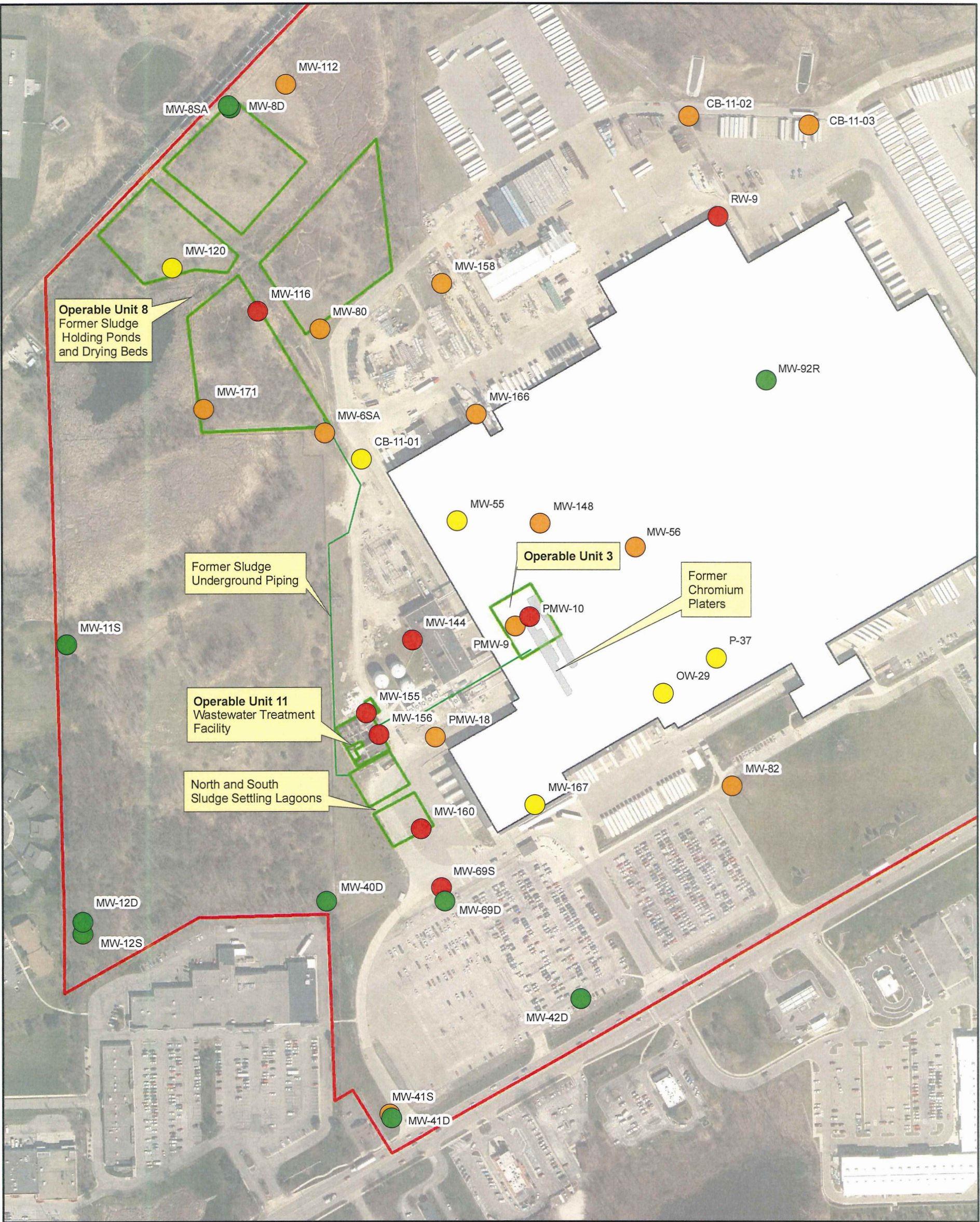


P:\Projects-ECA\Projects\Saline\Documents - In progress\PFAS GW Summary\3. Figures\Executables\PFAS Sampling - Results_rev_sampling.mxd



BASE MAP SOURCE: ESRI, DIGITALGLOBE, GEOEYE, EARTHSTAR GEOGRAPHICS, CNES/AIRBUS DS, USDA, USGS, AEROGRIID, IGN, AND THE GIS USER COMMUNITY

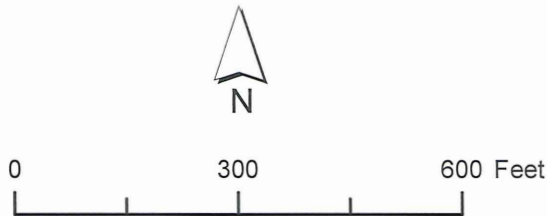
October 2018 - 2019 Sample Results - PFOA plus PFOS

- ND at the RL (2 ng/L)
- > RL - 10 ng/L
- 10 ng/L - 70 ng/L
- > 70 ng/L
- Saline Plant

Property Boundary

Acronyms

ND = Not detected
RL = Reporting Limit
PFOA = Perfluorooctanoic acid
PFOS = Perfluorooctane sulfonate
PFAS = Per- and polyfluoroalkyl substances



ORIGINAL BY: M. CAPODIVACCA
DATE: 02/09/2011
REVISED BY: MC
DATE: 11/22/2019

UPDATED PFAS GROUNDWATER MONITORING REPORT
SALINE PLANT
SALINE, MICHIGAN
PFAS SAMPLING ANALYTICAL RESULTS