



Rose & Westra  
A Division of GZA

GEOTECHNICAL  
ENVIRONMENTAL  
ECOLOGICAL  
WATER  
CONSTRUCTION  
MANAGEMENT

The Widdicomb Building  
601 Fifth Street NW  
Suite 102  
Grand Rapids, MI 49504  
T: 616.956.6123  
F: 616.288.3327  
www.rosewestra.com  
www.gza.com



## MEMORANDUM

To: Abby Hendershott, EGLE

From: Leslie Nelson, Rose & Westra, a Division of GZA GeoEnvironmental, Inc.

Date: January 6, 2020

File No.: 16.0062335.02 Task 002

Re: Wolverine World Wide, Inc. (Wolverine) – Former Tannery  
Monthly Progress Report

---

This Monthly Progress Report (MPR) is being provided at the request of EGLE to support the June 18, 2018 Source Investigation Task Summary (SITS) in response EGLE's request for regular progress updates.

This MPR summarizes the progress for the period November 23, 2019 through December 27, 2019. This includes actions performed, problems encountered, analytical data received during the reporting period, and anticipated developments during the next reporting period.

## ACTIONS PERFORMED

During this period, November 23, 2019 through December 27, 2019, GZA has done the following:

- 1) Surveyed TA-MW-314 well series (see Figure 1 for well locations).
- 2) Continued pump and treat system design.
- 3) Commenced the 4<sup>th</sup> quarter 2019 groundwater sampling event.
- 4) Conducted activities in response to the October 28, 2019 U.S. EPA Region 5 Administrative Settlement Agreement and Order on Consent for Removal Actions<sup>1</sup> (AOC).

## ANALYTICAL DATA RECEIVED

No analytical data was received in this reporting period.

## ANTICIPATED ACTIONS AND SCHEDULE FOR NEXT REPORTING PERIOD

During the next reporting period December 28, 2019 through January 24, 2020, R&W/GZA anticipates completing and/or continuing to conduct the following tasks.

- 1) Complete the 4<sup>th</sup> quarter groundwater sampling event.

---

<sup>1</sup> CERCLA Docket No. V-W-20-C-002.



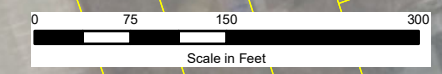
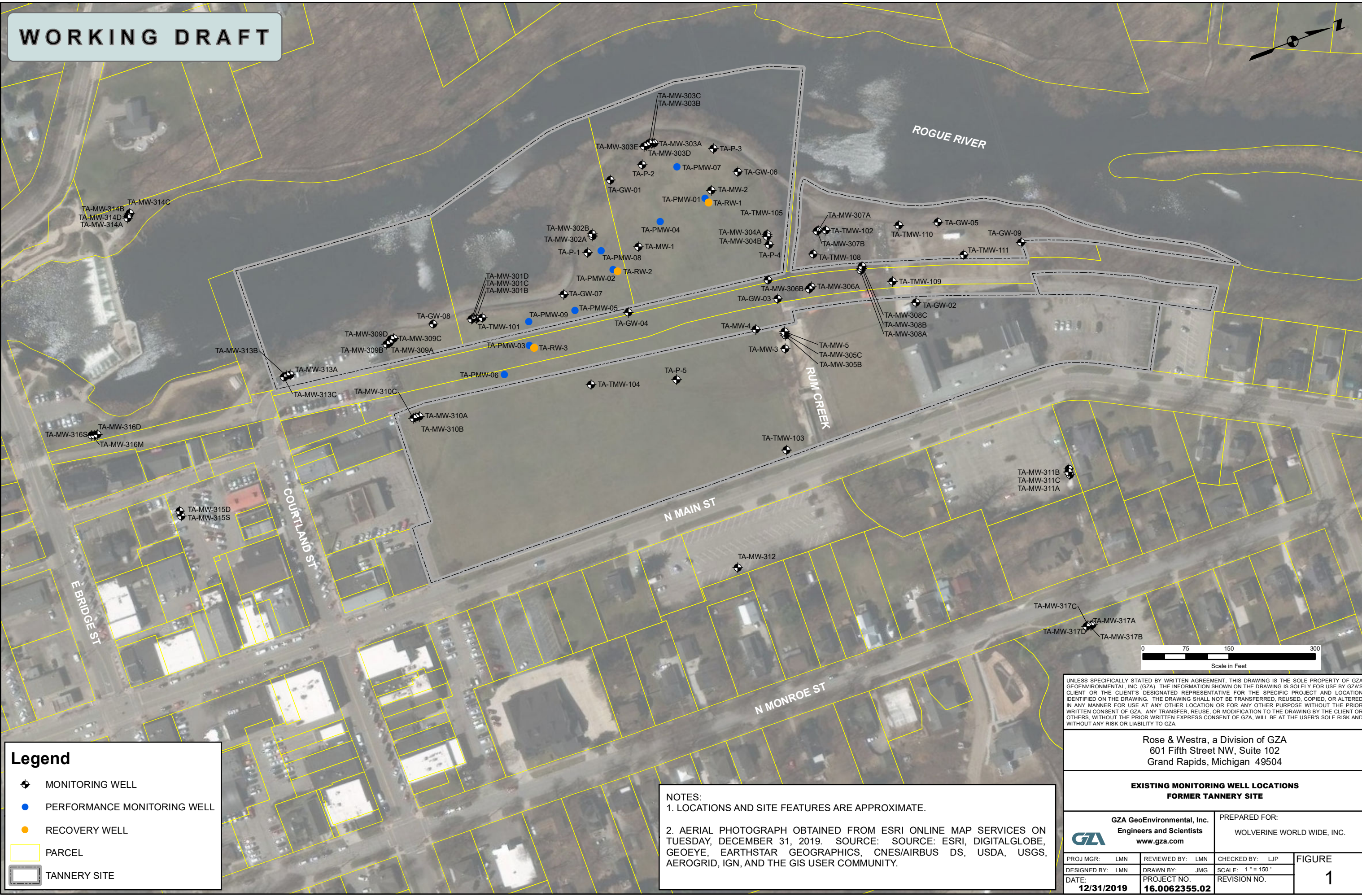
- 2) Continue to respond to the October 28, 2019 AOC regarding CERCLA actions at the former Wolverine Tannery site.
- 3) Continue the pump and treat system design.

J:\62000\62335\62335.02 - WWW Tannery 2017\_2018 Work\002 - Implementation of 2018 Work Plan\MDEQ Monthly Progress Reports\December 31, 2019 Report\Tannery-EGLE-MonthlyUpdate-010320.docx

**WORKING DRAFT**



© 2019 - GZA GeoEnvironmental, Inc. J:\16-xx-Grand Rapids\16.0062355\16.0062355-5x-WNJ\WWW\16.0062355-52\Data\_GIS\GIS\_CAD\Tanner\_MW.mxd, 12/31/2019, 9:09:33 AM, julie.greentier



**Legend**

- MONITORING WELL
- PERFORMANCE MONITORING WELL
- RECOVERY WELL
- PARCEL
- TANNERY SITE

**NOTES:**  
 1. LOCATIONS AND SITE FEATURES ARE APPROXIMATE.  
 2. AERIAL PHOTOGRAPH OBTAINED FROM ESRI ONLINE MAP SERVICES ON TUESDAY, DECEMBER 31, 2019. SOURCE: SOURCE: ESRI, DIGITALGLOBE, GEOEYE, EARTHSTAR GEOGRAPHICS, CNESAIRBUS DS, USDA, USGS, AEROGRIID, IGN, AND THE GIS USER COMMUNITY.

UNLESS SPECIFICALLY STATED BY WRITTEN AGREEMENT, THIS DRAWING IS THE SOLE PROPERTY OF GZA GEOENVIRONMENTAL, INC. (GZA). THE INFORMATION SHOWN ON THE DRAWING IS SOLELY FOR USE BY GZA'S CLIENT OR THE CLIENT'S DESIGNATED REPRESENTATIVE FOR THE SPECIFIC PROJECT AND LOCATION IDENTIFIED ON THE DRAWING. THE DRAWING SHALL NOT BE TRANSFERRED, REUSED, COPIED, OR ALTERED IN ANY MANNER FOR USE AT ANY OTHER LOCATION OR FOR ANY OTHER PURPOSE WITHOUT THE PRIOR WRITTEN CONSENT OF GZA. ANY TRANSFER, REUSE, OR MODIFICATION TO THE DRAWING BY THE CLIENT OR OTHERS, WITHOUT THE PRIOR WRITTEN EXPRESS CONSENT OF GZA, WILL BE AT THE USER'S SOLE RISK AND WITHOUT ANY RISK OR LIABILITY TO GZA.

Rose & Westra, a Division of GZA  
 601 Fifth Street NW, Suite 102  
 Grand Rapids, Michigan 49504

**EXISTING MONITORING WELL LOCATIONS  
 FORMER TANNERY SITE**

GZA GeoEnvironmental, Inc.  
 Engineers and Scientists  
 www.gza.com

PREPARED FOR:  
 WOLVERINE WORLD WIDE, INC.

PROJ MGR: LMN	REVIEWED BY: LMN	CHECKED BY: LJP	FIGURE <b>1</b>
DESIGNED BY: LMN	DRAWN BY: JMG	SCALE: 1" = 150'	
DATE: 12/31/2019	PROJECT NO. 16.0062355.02	REVISION NO.	