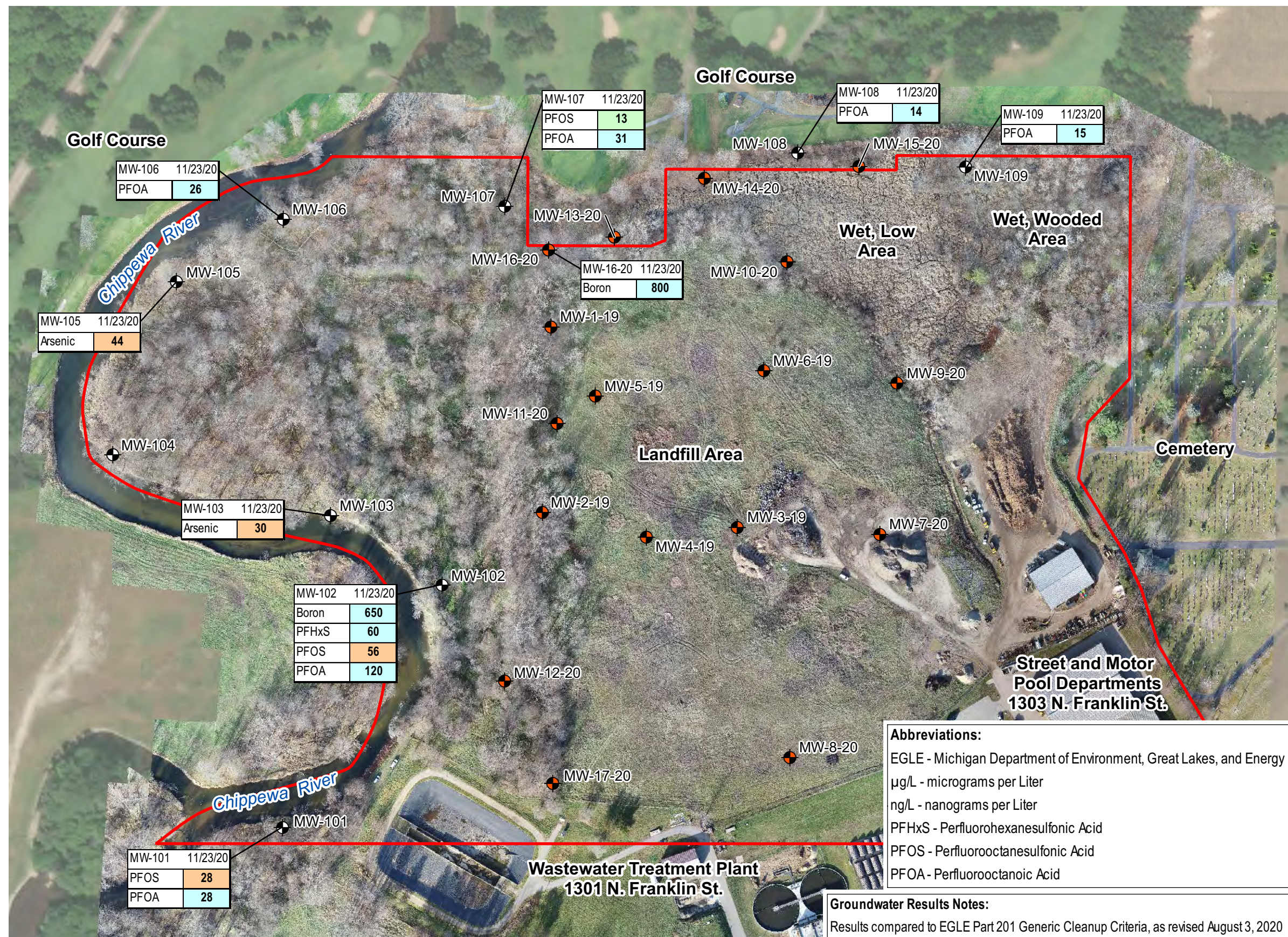
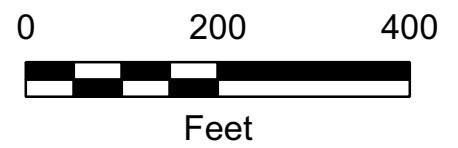


Date Saved: 12/22/2020 11:48:02 AM
 Path: C:\Users\ZRogers\Desktop\GIS M3460001\Map Files\Fig5_GWAnalyticalSummaryMap.mxd



Legend

- Monitoring Well**
- Installed November 2020
 - Previously Installed
 - Site Boundary



General Notes:

1. Previously installed monitoring well locations were adapted from an AKTPeerless "Site Map," dated July 26, 2020 provided to MSG by the City of Mt. Pleasant.
2. Site boundary adapted from parcel boundaries provided on the Isabella County website and AKTPeerless "Site Map," dated July 26, 2020.
3. Aerial imagery collected on November 18, 2020.

Abbreviations:

EGLE - Michigan Department of Environment, Great Lakes, and Energy
 µg/L - micrograms per Liter
 ng/L - nanograms per Liter
 PFHxS - Perfluorohexanesulfonic Acid
 PFOS - Perfluorooctanesulfonic Acid
 PFOA - Perfluorooctanoic Acid

Groundwater Results Notes:

Results compared to EGLE Part 201 Generic Cleanup Criteria, as revised August 3, 2020
 Only results that exceed generic criteria are shown

- Exceeds Generic Residential and Nonresidential Drinking Water Criteria (DWC)
- Exceeds Groundwater Surface Water Interface Criteria (GSIC)
- Exceeds Generic Residential and Nonresidential DWC and GSIC

Arsenic and Boron results expressed in µg/L
 PFHxS, PFOS and PFOA results expressed in ng/L



FIGURE 5
 Groundwater Analytical Exceedance Summary Map

1301-1303 North Franklin Street
 Mount Pleasant, Isabella County, MI

DATE 12/22/2020	DRAWN BY ZTR	DESIGNED BY ZTR	PROJECT NO. M3460001
--------------------	-----------------	--------------------	-------------------------

Source: Esri, Maxar, GeoEye, Earthstar, CNES, Airbus, GeoCommunity