

Kent Co. Investigations & Thornapple River

Abigail Hendershott, District Supervisor
Remediation & Redevelopment Division
Michigan Department of Environmental Quality
hendershotta@Michigan.gov



DEQ Overview

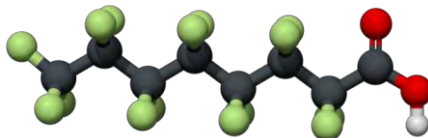
- PFAS Basics and MPART
- Kent Co. Investigations
- River Overviews
 - Surface water, fish, etc.

What are PFAS?

Per and Poly-fluoroalkyl substances

- Generic family of chemicals = over 3000
- Man-made and do not occur naturally
- Developed in 1940's
- Used to make products that resist heat, oils, grease, stains and water

Most Prevalent and researched: PFOS & PFOA



PFAS Uses



Aerospace



Apparel



**Building and
Construction**



**Chemicals and
Pharmaceuticals**



Electronics



Oil & Gas



Energy



**Healthcare and
Hospitals**



**Aqueous Film
Forming Foam**



Semiconductors

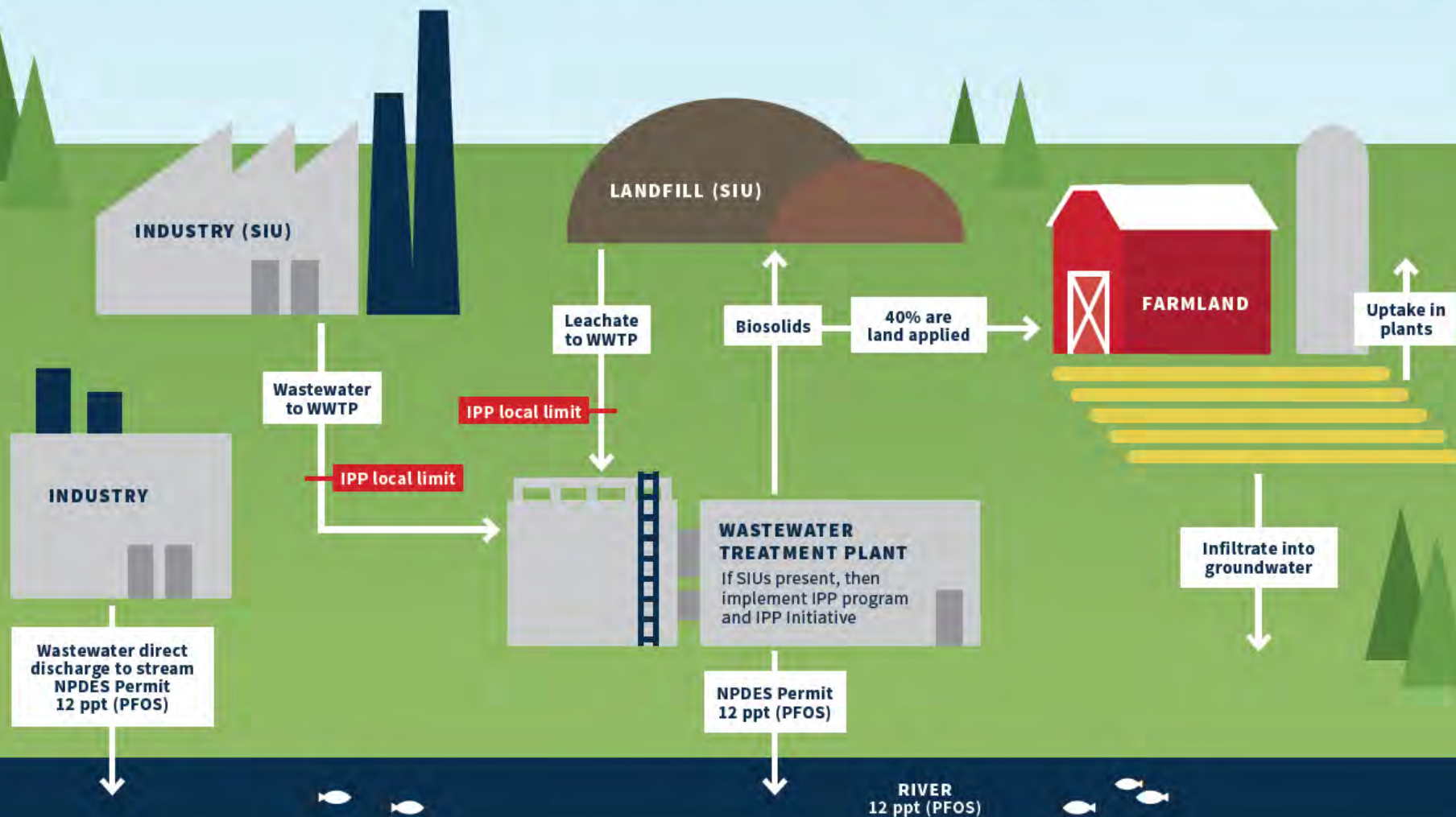
What Types of Sites Can Be Sources of PFAS?

- Fire training facilities
- Fire stations
- Refineries
- DoD sites/Military bases
- Commercial and Private Airports
- Landfills
- Biosolids land application
- Rail Yards
- Chemical facilities
- Plating facilities
- Textile/Carpet Manufactures
- Residential areas with septic systems



PFAS Water Cycle

IPP = Industrial Pretreatment Program
SIU = Significant Industrial User
NPDES = National Pollution Discharge Elimination System
PPT = Parts Per Trillion
WWTP = Wastewater Treatment Plant

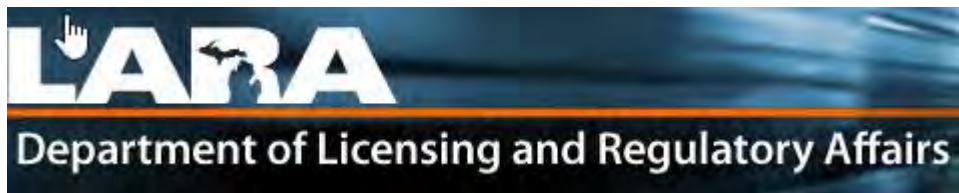


MPART

Michigan PFAS Action Response Team

- Governor Snyder signed ED 2017-4 on November 13, 2017
- Statewide cooperation and collaboration to strategically and proactively address this emerging contaminant.

Who is MPART?....



Statewide cooperation and collaboration to strategically and proactively address this emerging contaminant.

Regular Monitoring Plus

- Site-specific monitoring of known PFAS sites
- Monitoring of PFAS in rivers, lakes and streams, and fish
- Monitor point sources (Direct Discharges)
- Industrial Pretreatment Program Initiative (Indirect Discharges)
- Biosolids program
- Superfund program
- Coordinate with other Divisions (AQD, WMRPD and DHHS, others)

Other Potential Sources of PFOS & PFOA for WWTPs

- Platers using fume suppressants/demisters/wetting agents
- Leather and fabric treaters, tanneries
- Paper and packaging manufacturers
- Manufacturers of parts w/PTFE coatings
- Centralized Waste Treaters
- Landfills (leachate)
- AFFF fire fighting foam



Aqueous Film Forming Foam (AFFF)



Photo Credit: U.S. Air Force

AFFF meets Military Specification

Community Water Supplies and Schools

1,380 community water supplies

461 schools

12 systems from 8 Tribes

> 700 supplies sampled so far

Represents 75% of MI residents

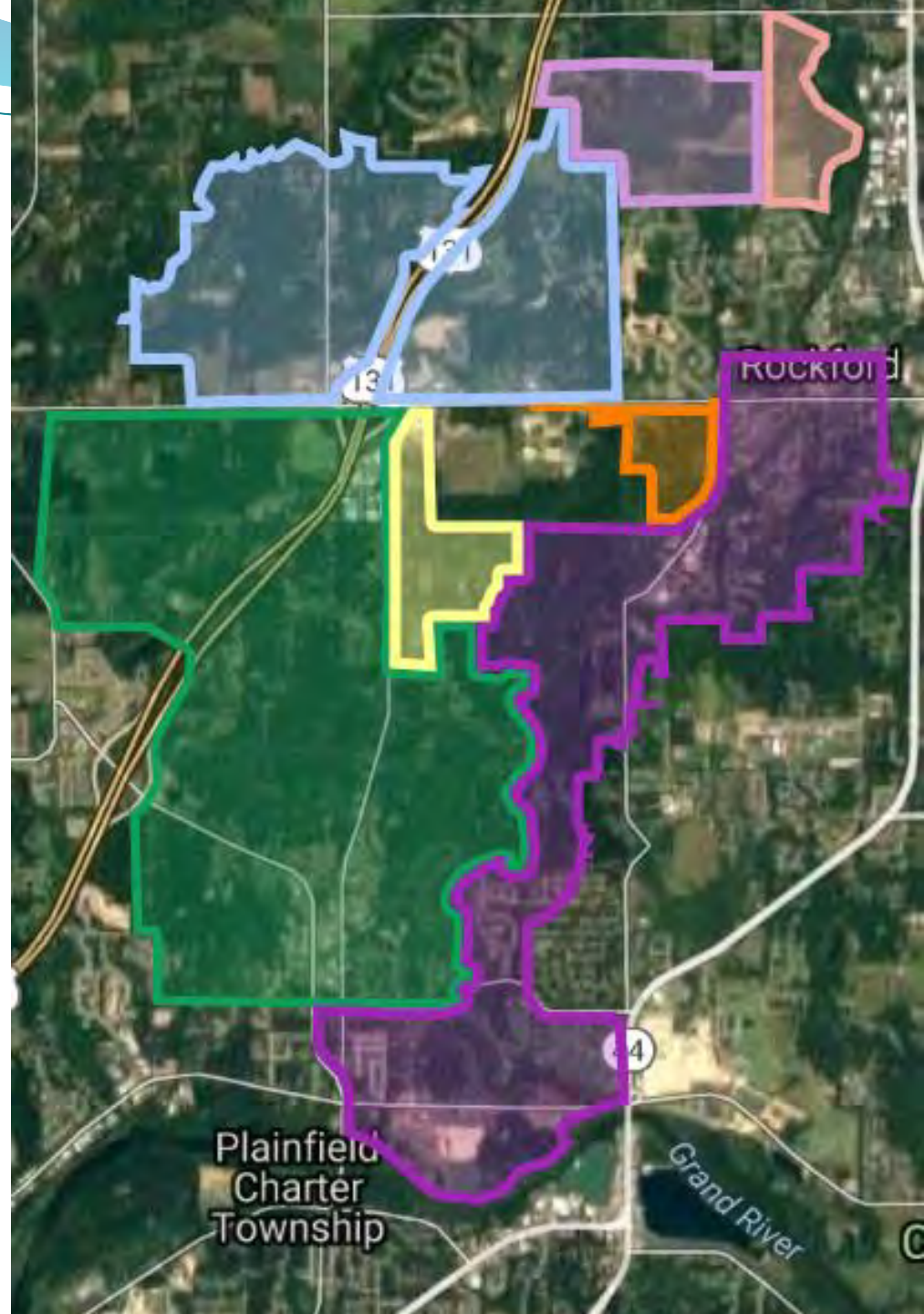
To be completed December 2018



Kent County Investigations

July 2018 North Kent Sampling Areas

- ✓ PFAS Investigation Areas
- House Street
- North Childsdale/10 Mile
- Rogue River
- 12 Mile - White Pine Trail Area
- Wolven - Jewell Sampling Area
- Wolven Northeast
- North Kent Landfill Area



PFOS / PFOA Results

Legend

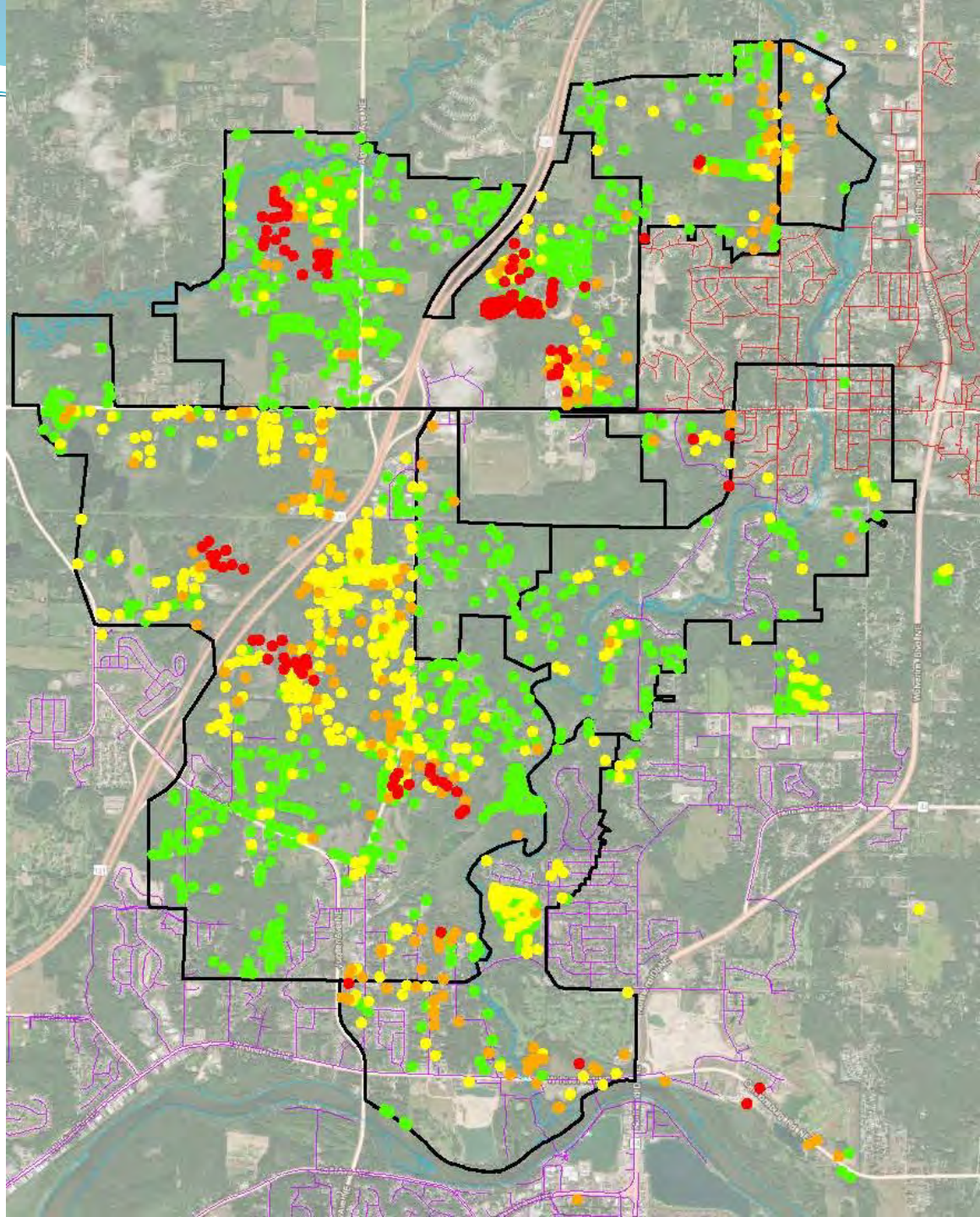
PFOS + PFOA, ppt (1,701)

- Non-Detect (922)
- >0 to 10 (463)
- >10 to 70 (196)
- > 70 (120)

DRAFT

MAXIMUM DETECTED
PFOS + PFOA CONCENTRATIONS
AS OF 8/23/2018

NORTH KENT DISPOSAL AREA
KENT COUNTY, MI





Thornapple River and Others

Thornapple River:

DEQ has conducted:

- Surface Water sampling for PFAS
- Foam sampling at Cascade Dam
- Responded to citizen concerns about foam
- Fish Studies underway



Ada Dam

Cascade Dam

Rogue and Thornapple River Foam Health Advisories

Foam and Surface Water

Thornapple River Sampling:

Collected just below Cascade Dam

Foam (ppt)

PFOA + PFOS	Total PFAS
199	317

Surface Water (ppt)

PFOA + PFOS	Total PFAS
9.6	18

Rogue River Sampling:

Various Rockford collection locations

Foam (ppt)

PFOA + PFOS	Total PFAS
261,255	296,585
42,149	44,812
43,176	46,497

Surface Water (ppt)

PFOA + PFOS	Total PFAS
61.4	76.6
9.93	15.01
9.1	12.5

Fish and Surface Water Sampling: Thornapple River

Wild Fish Tissue Collection Sites

- Middleville
 - Cascade
 - Ada
- } Impoundments / dams

Caged Fish and Surface Water Sampling

- Mouth of Thornapple River (Thornapple River Drive)

Sites on Grand, Rogue and selected inland lakes included in study

Fish study in collaboration with MDHHS

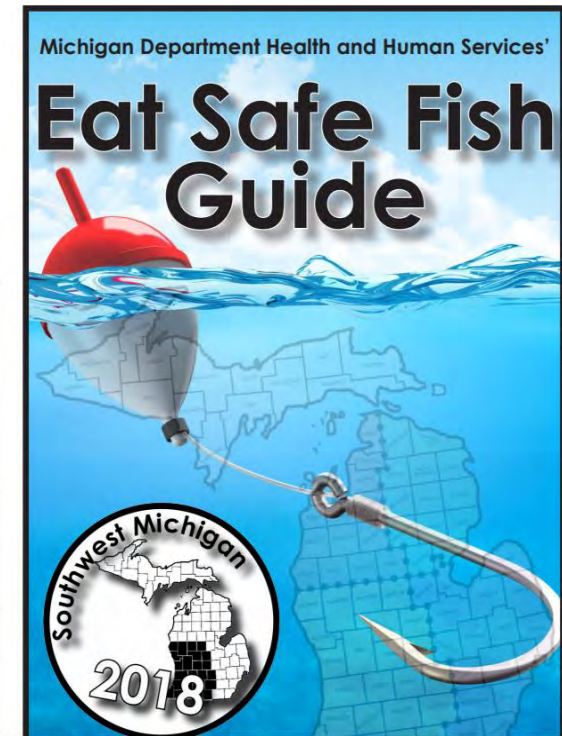
State Fish Advisories

Kent County (continued)

Thornapple River

(downstream of Middleville Dam in Barry County; includes the Ada Impoundment, the Cascade Impoundment, and the LaBarge Impoundments)

Type of Fish	Chemicals of Concern	Size of Fish (length in inches)	MI Servings per Month*
Carp	PCBs & Mercury	Any	2
Largemouth Bass	Mercury	Under 18" Over 18"	1 6 Per Year
Smallmouth Bass	Mercury	Under 18" Over 18"	1 6 Per Year



DEQ- Next Steps

Continue to monitor...

- Known PFAS Sites
- PFAS in rivers, lakes, streams, and fish
- Point sources

Prioritize new sites based on findings from:

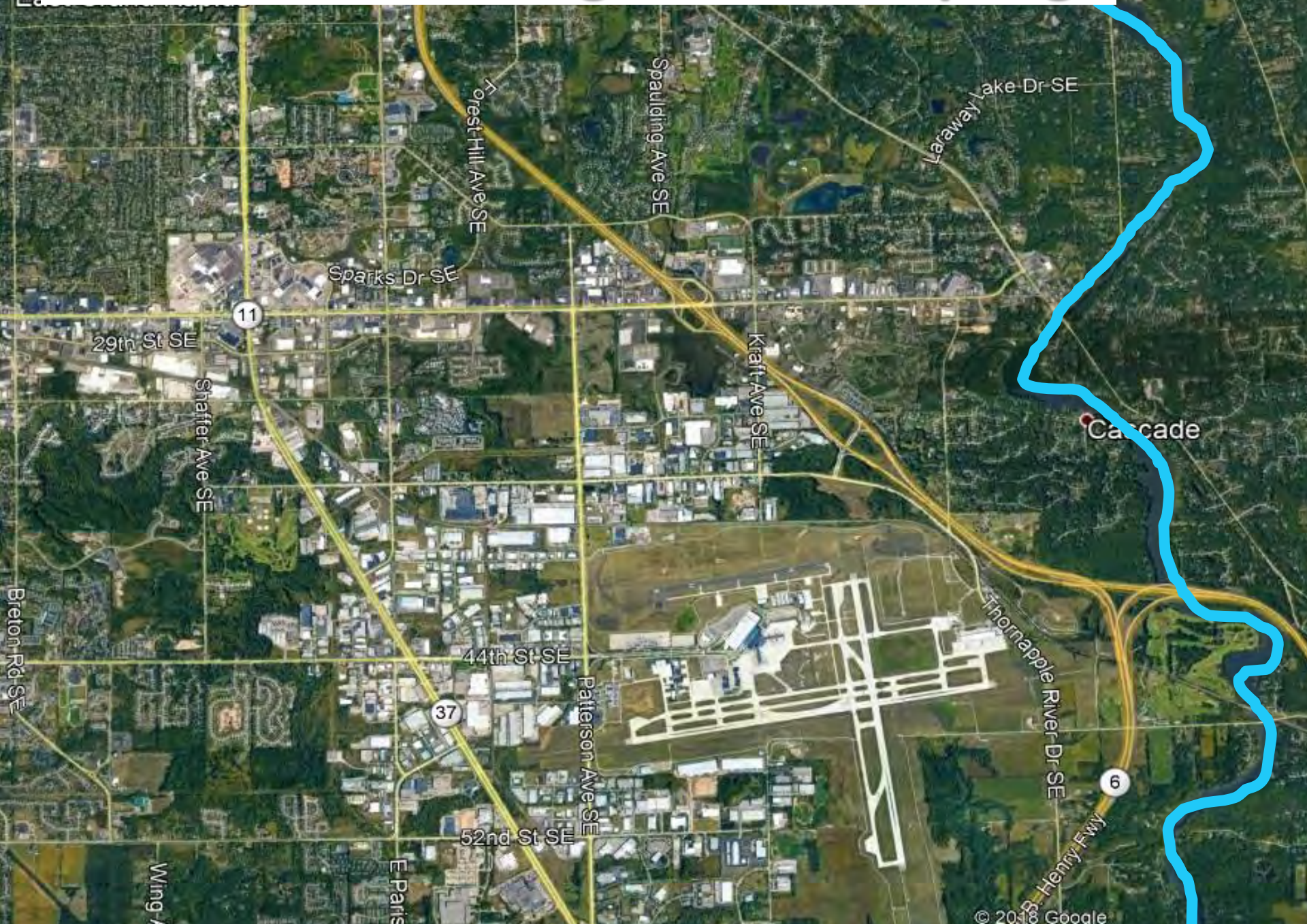
- IPP initiative; community and school water supply testing, etc.

Continue to coordinate with MPART, other Divisions and community stakeholders

Next Steps Continued...

- Continue to oversee the investigation at GFIA (offsite-residential drinking water sampling)
- Continue to review onsite groundwater and soil data at GFIA
- Continue to evaluate AFFF use at GFIA
- Continue to work with community: Cascade Twp, Kent County, etc.
- Evaluating other potential PFAS sources in the area
- Reviewing all PFAS sampling in the area (point source, municipal sampling etc.)

Residential Drinking Water Sampling



Additional Information

www.Michigan.gov/pfasresponse

<https://www.accesskent.com/Health/PFAS/default.htm>

<http://www.cascadetwp.com/Community/What-s-Happening/Well-Water-Resources.aspx>

Michigan Department of Environmental Quality

800-662-9278

www.michigan.gov/deq

Aaron Assmann

616-430-5275

AssmannA@Michigan.gov



Sign up for email updates



Follow us on Twitter @MichiganDEQ



Per and Polyfluorinated Alkyl Substances (PFAS)

Bill Farrell

Toxicologist

Michigan Department of Health and Human Services

(517) 284-0018

The Role of MDHHS

- Determine if chemicals in the environment may cause harm to health
- Provide recommendations
- Provide technical support to your local health department
- Outreach to residents, healthcare providers, others
- Be proactive/respond immediately to protect health of people

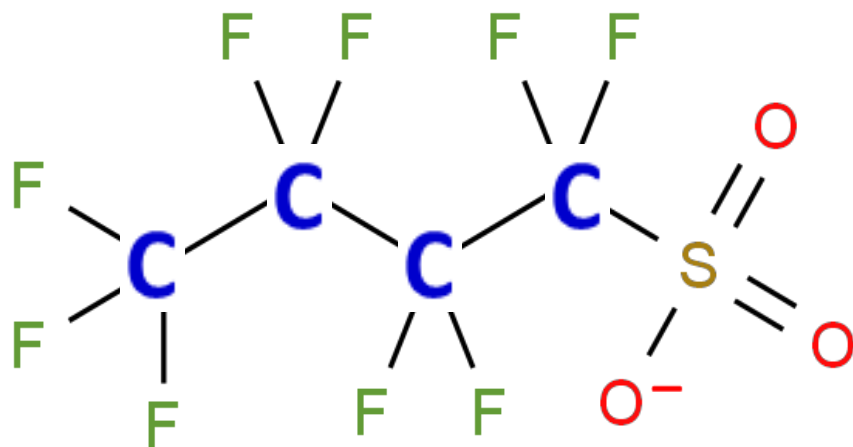


Chain Lengths

Short-chain

PFBS $n = 4$

PFPeS $n = 5$



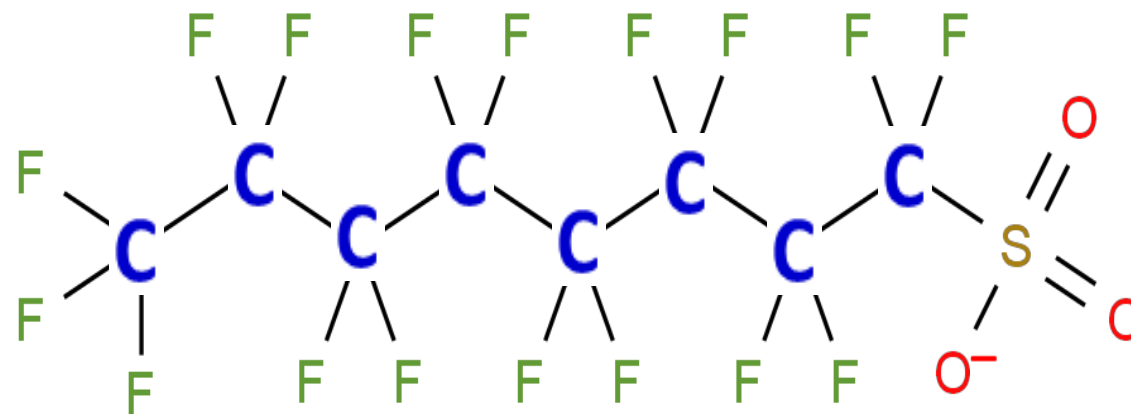
PFBS

Long-chain

PFHxS $n = 6$

PFHpS $n = 7$

PFOS $n = 8$

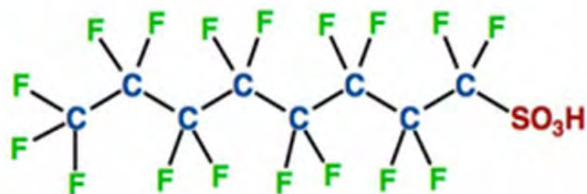


PFOS

Characteristics



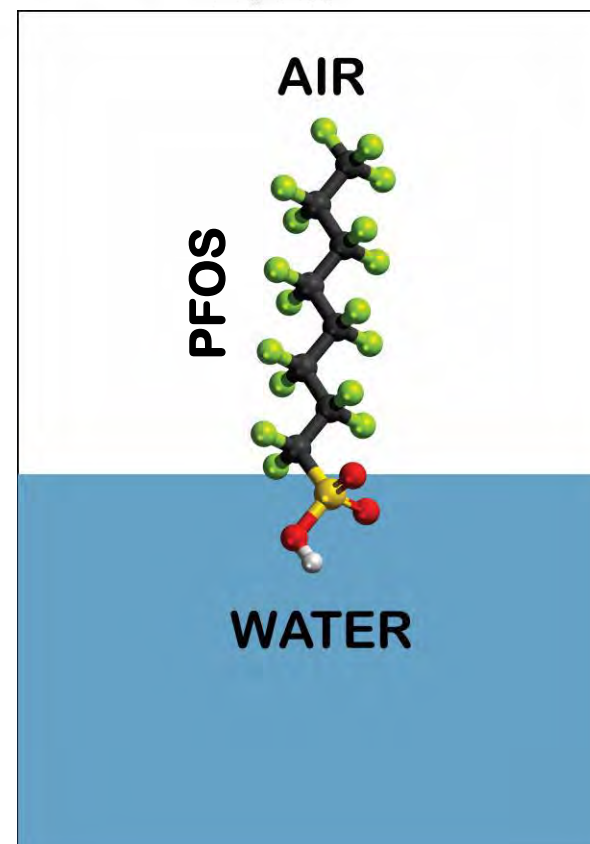
PFOA - perfluorooctanoic acid



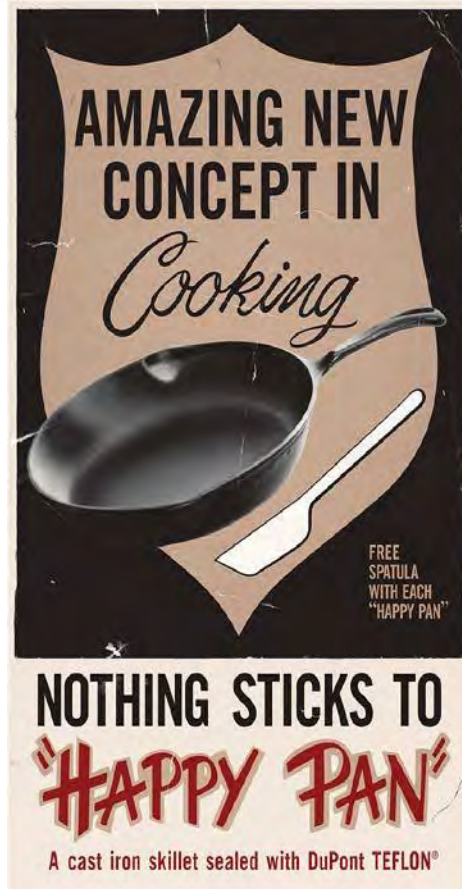
PFOS - perfluorooctanesulfonic acid

- Incredibly Stable
- Highly soluble and mobile
- Grease, soil and water-repellant properties
- Bioaccumulate in Biota

INTERFACE DWELLERS



Sources



PFAS Chemicals

Health problems are
not immediate



If you drink high levels
of PFAS chemicals
over time you could
be more likely than
the average person to
develop some health
problems in the future

Health Outcomes

C8 Health project

70,000 residents with drinking water exposure linked to serum-PFOA concentrations and variety of health outcomes.

Epidemiological studies showed health associations for both PFOA and PFOS

High
cholesterol

Ulcerative
colitis

Thyroid
disease

Pregnancy-
induced
hypertension

Cancer
(testicular,
kidney)

Environmental Protection Agency's “Lifetime Health Advisory” Level



**Based on reference doses (RfD)
calculated from developmental toxicity
study in rats**

Lifetime Health Advisory

- PFOA + PFOS = 70 ppt (ng/L)
- Short-term and long-term exposure



**Protective of unborn baby against
developmental effects**



**Protective of all against cancer and
noncancer health effects**

6,000,000* ppt
(1,000,000 ng/kg/day)



Rodent to human
conversion



98,000 ppt
(5,300 ng/kg/day)



Human
protections



350 ppt
(20 ng/kg/day)



Accounting for
other exposures
in the
environment



70 ppt
(ng/L)

Lowest dose that causes
an effect in rat pups

Human equivalent
dose

Dose that is safe in the most vulnerable
people (like developing babies)

Lifetime Health Advisory
for PFOA in drinking water

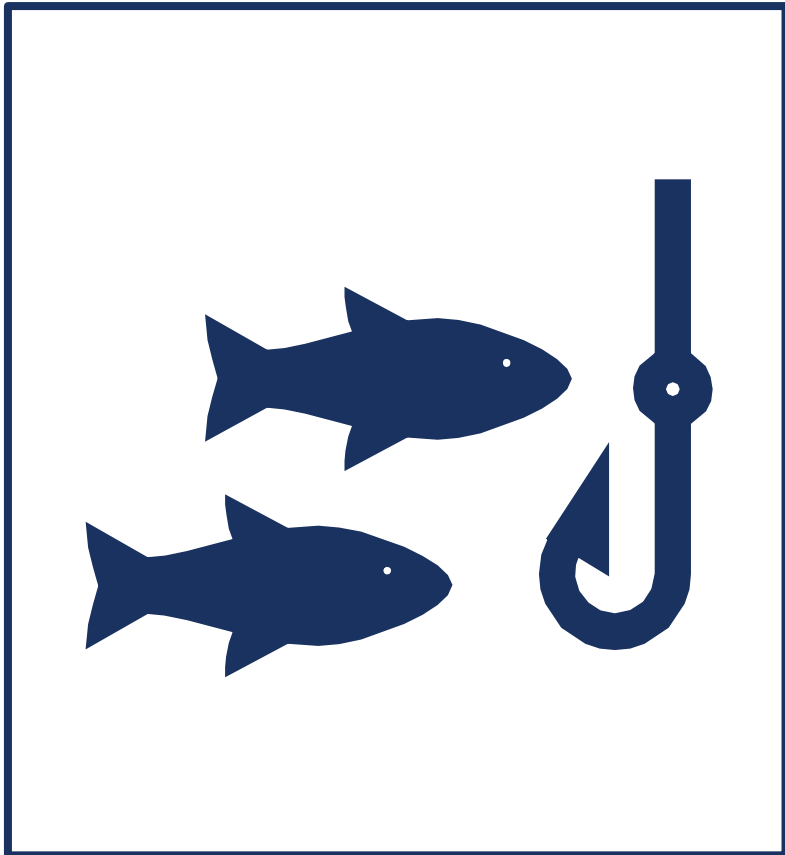
Illustrating the concept behind a Lifetime Health Advisory: Perfluorooctanoic acid (PFOA)

* Exact numbers have been generalized for illustration
ppt = Parts per trillion

Various State Standards

State	PFOA ppt	PFOS ppt	Comments	Source
Alabama	70	70		EPA
Alaska	400	400		ADEC
California	Prop 65	Prop 65	Proposed	OEHHA
Connecticut	70	70	PFNA, PFHxA, PFPeA, PFHpA	DPH
Colorado	70	70	PFHpA	
Delaware	70	70		DNR
Georgia	70	70	Proposed	DPH
Illinois	400	200		
Iowa	70	70		DNR
Kentucky	400	200		NKWD
Maine	70	70		ME DEP
Maryland	70	70		
Michigan	70	70	HB 5373 proposed 5	MI DEQ
Minnesota	35	27		MDH
New Hampshire	70	70		DES
New Jersey*	14	13		NJDEP
New York	70	70		
North Carolina	2000	NA		DENR
Ohio	400	200		EPA
Oregon	24000	300000	PFHpA, PFNA, PFOSA	
Pennsylvania	70 (May lower to 6)	70		PA DEP
Rhode Island	70	70		
Texas	290	560	PCLs for 16 PFCs	CEQ
Vermont	20	20		VT DOH
West Virginia	400	200		

Thornapple River



- Recreational Uses

- Swimming
- Fishing

Thornapple River - Recreational Use Surface Water

- MDHHS Toxicologists evaluated recreational-use risks associated with surface water PFAS results for various surface water bodies across the state
 - Rogue River
 - Lake St. Clair

Conclusion:

MDHHS has concluded that incidental swallowing or dermal contact with PFAS-containing surface water via recreational activities (swimming, water sports, etc.) in these areas are not expected to cause harm to human health.

PFAS concentrations in Thornapple well below PFAS concentrations at these other sites.

Recreational activities on Thornapple River are not expected to cause harm to human health.

Thornapple River - Recreational Use Foam

- MDHHS Toxicologists evaluated incidental exposures (ingestion and skin contact) to PFAS-containing foam during recreational activities
 - Rogue River

Conclusion:

MDHHS has concluded that swallowing PFAS-containing foam may pose a human health risk.

Skin contact with foam is not expected to cause harm to human health.

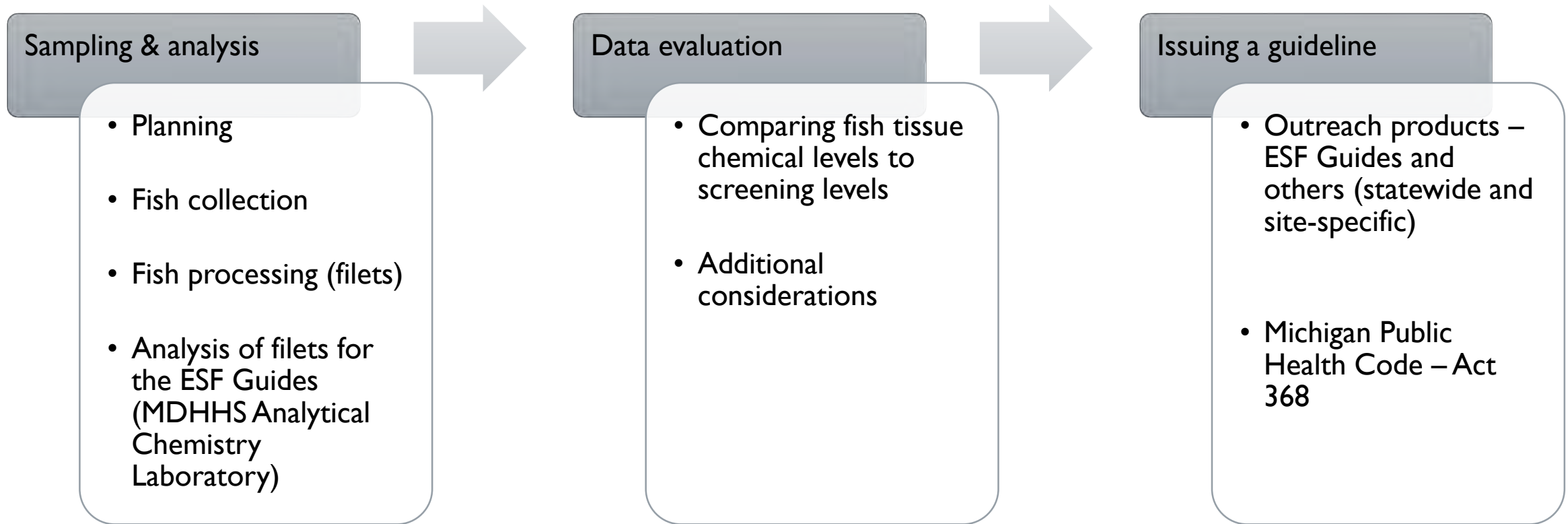
Kent County Health Department issued a Health Advisory to avoid swallowing foam during recreational activities on Thornapple River (June 2018).



The Michigan Fish Consumption Advisory Program

Michigan Department of Health and Human Services

GENERAL PROCESS FOR CONSUMPTION GUIDELINE DEVELOPMENT



STATEWIDE SAFE FISH GUIDELINES

- These general guidelines are based on the typical amount of chemicals found in fish filets tested from around the state. Some fish may be higher or lower.
- These general guidelines can be used for lakes, rivers, and fish species not included in the Eat Safe Fish Guide.

Type of Fish	Chemical of Concern	Size of Fish (length in inches)	MI Servings per Month*
Black Crappie	Mercury	Any Size	4
Bluegill	Mercury	Any Size	8
Carp	PCBs	Any Size	2
Catfish	PCBs & Mercury	Any Size	4
Largemouth Bass	Mercury	Under 18"	2
		Over 18"	1
Muskellunge (Muskie)	Mercury	Any Size	1
Northern Pike	Mercury	Under 30"	2
		Over 30"	1
Rock Bass	Mercury	Any Size	4
Smallmouth Bass	Mercury	Under 18"	2
		Over 18"	1
Suckers	Mercury	Any Size	8
Sunfish	Mercury	Any Size	8
Walleye	Mercury	Under 20"	2
		Over 20"	1
White Crappie	Mercury	Any Size	4
Yellow Perch	Mercury	Any Size	4

2018 Eat Safe Fish Guide Thornapple River

Thornapple River

(downstream of Middleville Dam in Barry County; includes the Ada Impoundment, the Cascade Impoundment, and the LaBarge Impoundments)

Type of Fish	Chemicals of Concern	Size of Fish (length in inches)	MI Servings per Month*
Carp	PCBs & Mercury	Any	2
Largemouth Bass	Mercury	Under 18" Over 18"	1 6 Per Year
Smallmouth Bass	Mercury	Under 18" Over 18"	1 6 Per Year

Fish collections are planned in 2018 for the Thornapple River to assess PFAS concentrations in surface water and fish

"MI SERVING"

My Michigan, MI Serving Size

- ✓ 8 ounces of fish = size of an adult's hand (large oval)
- ✓ 4 ounces of fish = size of the palm of an adult's hand (small circle)
- ✓ 2 ounces of fish = size of half a palm of an adult's hand (rectangle)



How much is *MI Serving*?

Weight of Person	<i>MI Serving Size</i>
45 pounds	2 ounces
90 pounds	4 ounces
180 pounds	8 ounces

What you can do

Reduce your exposure to PFAS from other sources:

- Use a filter if it is recommended
 - Point-of-Use (POU) – NSF Certified
 - Point-of-Entry (POET)
- Follow MI's Eat Safe Fish guidelines
- Read consumer product labels and avoid using those with PFAS

- outdoor clothing
- carpets
- cleaning products
- cosmetics
- leather goods
- ski waxes

“perfluoro...” “polyfluoro...”
“polyperfluoro...”



Thank you

Contact information:

Bill Farrell

Michigan Department of Health and Human Services

(517) 284-0018

farrellw@michigan.gov





PFAS are in many
products commonly used

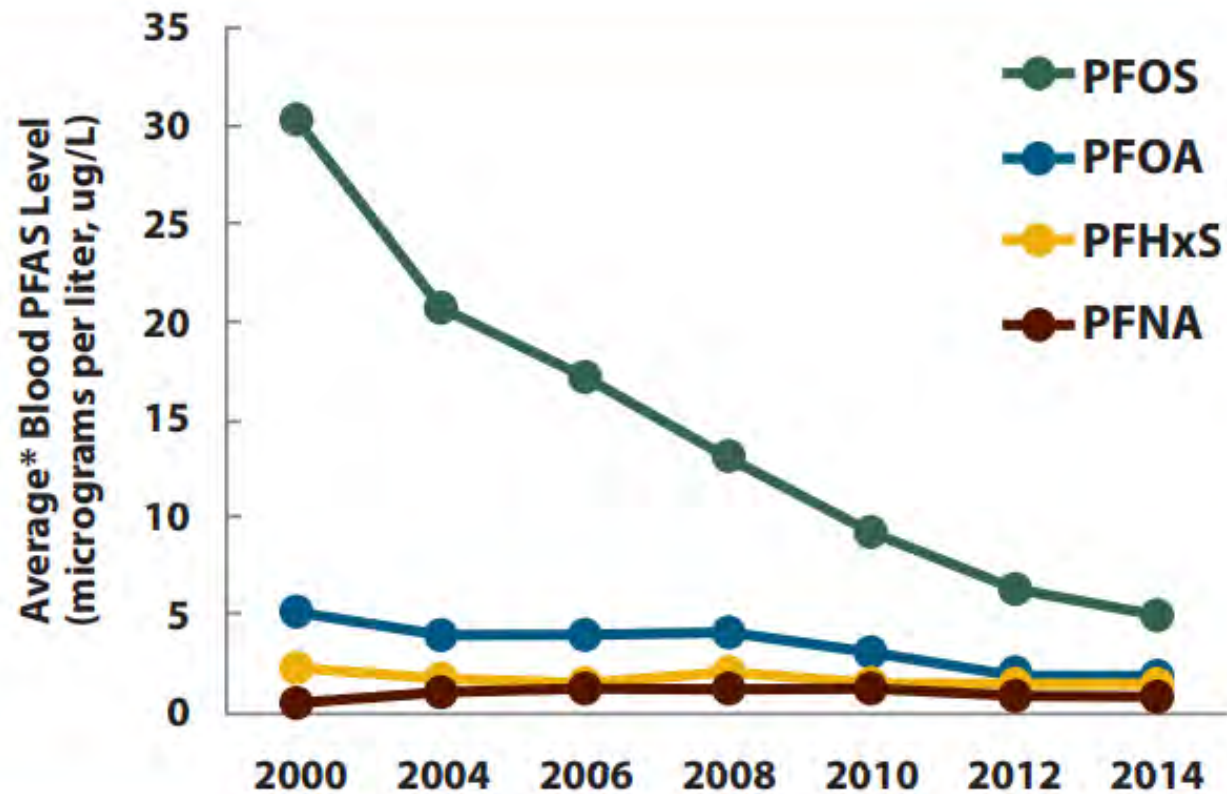
People are expected to
have some level of PFAS
in their blood

Blood testing:

CAN tell you the
concentration in your blood at
time of test

CANNOT tell you if current or
future health conditions are
due to PFAS or how you were
exposed (where the PFAS came
from)

Blood Testing



* Average = geometric mean

Data Source: Centers for Disease Control and Prevention. Fourth Report on Human Exposure to Environmental Chemicals, Updated Tables, (January 2017). Atlanta, GA: U.S. Department of Health and Human Services, Centers for Disease Control and Prevention.

BLOOD LEVELS OF
THE MOST COMMON
PFAS IN PEOPLE IN
THE UNITED STATES
FROM 2000-2014

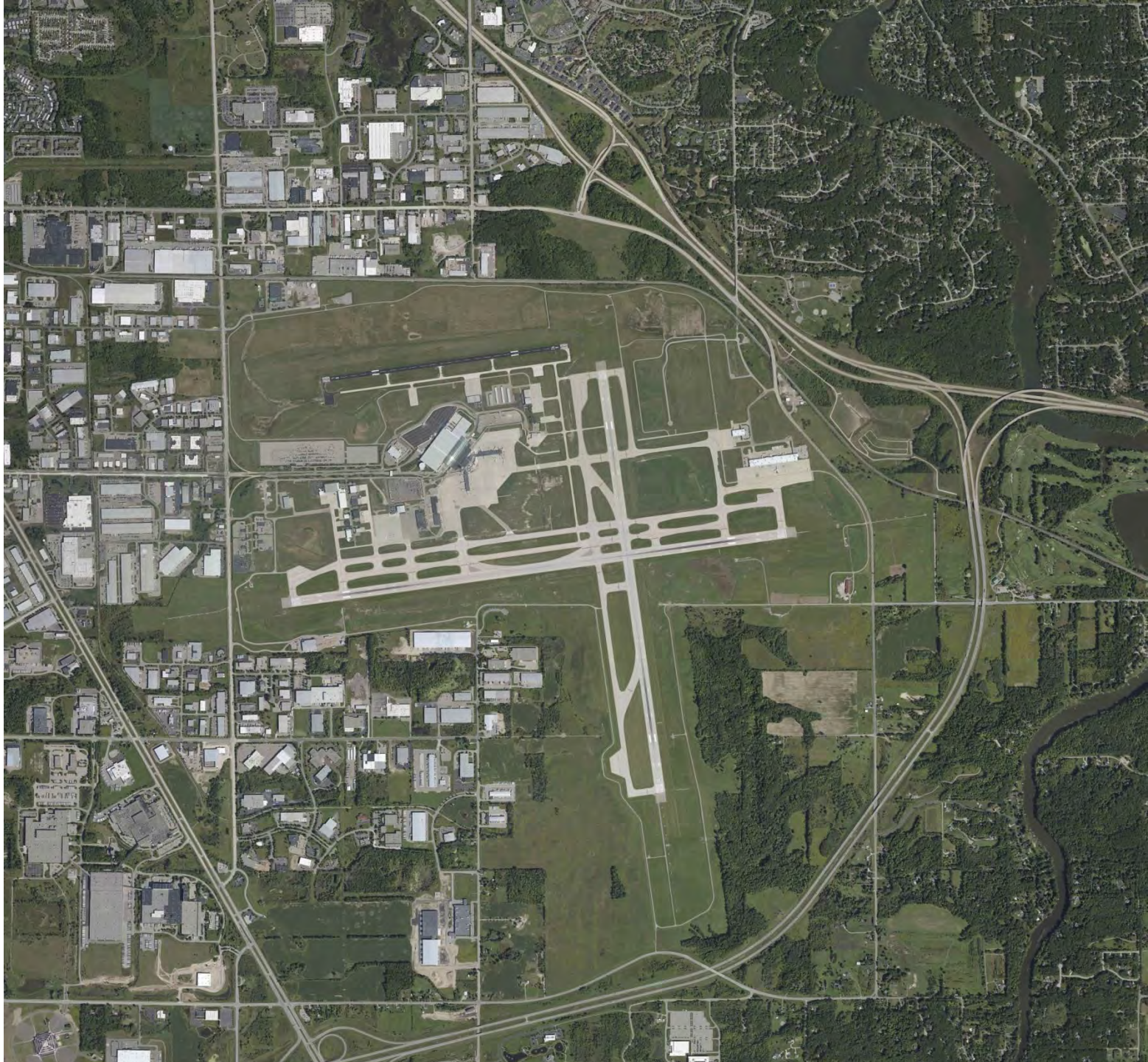




Figure 3-3. Groundwater PFOS and PFOA Sample Results (ng/L).

