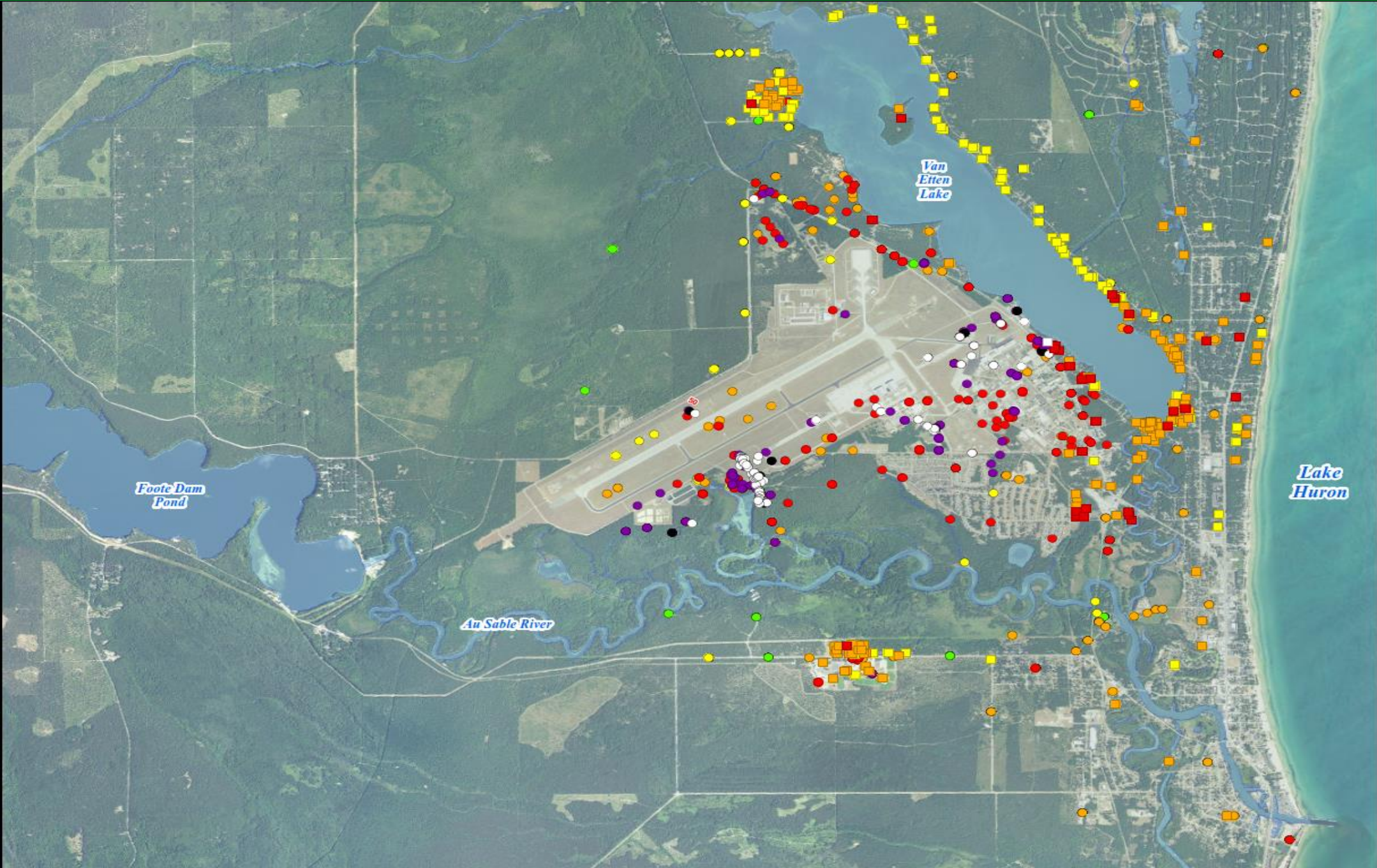


FORMER WURTSMITH AIR FORCE BASE – RAB MEETING

GROUNDWATER AND RESIDENTIAL HEAT MAPS



DRAFT

11/29/2018

Total PFAS (ppt)

Residential Wells

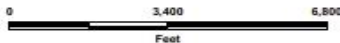
- Non-Detect
- <10
- 10 - <70
- 70 - <1,000
- 1,000 - <5,000
- 5,000 - <10,000
- >10,000

Groundwater Samples

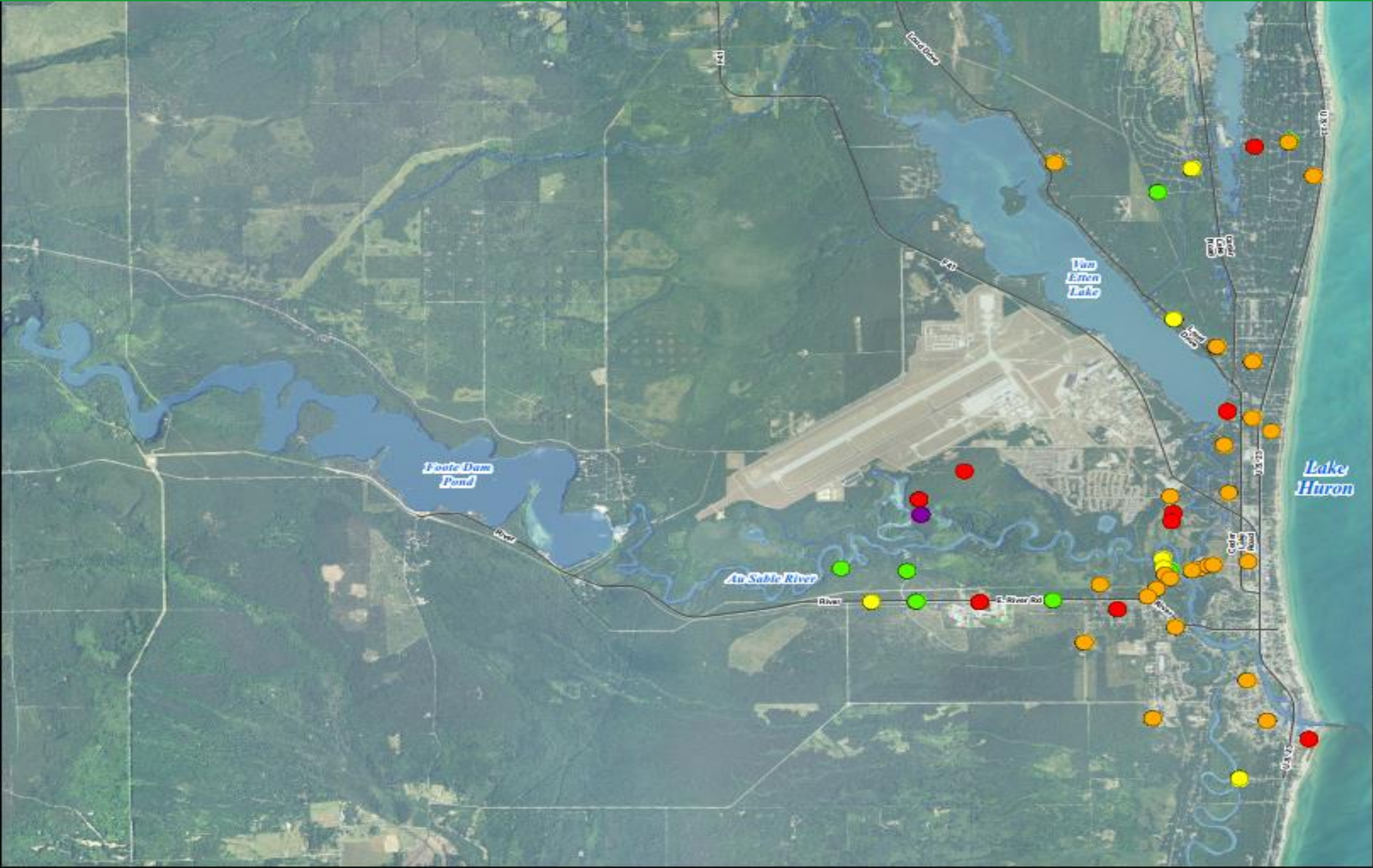
- Non-Detect
- <10
- 10 - <70
- 70 - <1,000
- 1,000 - <5,000
- 5,000 - <10,000
- >10,000

GROUNDWATER AND
RESIDENTIAL SAMPLING
RESULTS TOTAL PFAS

FORMER WURTSMITH
AIR FORCE BASE
IOSCO COUNTY,
MICHIGAN



MDEQ REMEDIAL INVESTIGATION HEAT MAPS



DRAFT

11/29/2018

**Total PFAS (ppt)
2017-2018 RI Borings**

- Non-Detect
- <10
- 10 - <70
- 70 - <1,000
- 1,000 - <5,000
- 5,000 - <10,000
- >10,000

2017-2018 RI BORINGS
RESULTS TOTAL PFAS

FORMER WURTSMITH
AIR FORCE BASE
IOSCO COUNTY,
MICHIGAN

0 4,500 9,000
Feet



MDEQ PORE WATER SAMPLE RESULTS, VAN ETTEN LAKE MAP



Lake
Huron

Van
Etten
Lake



DRAFT 11/30/2018

Legend

Pore Water Sample

PFOS (ppt)

- ▲ Non-Detect
- ▲ >0 to 12 (Below Surface Water Criterion)
- ▲ >12 (Above Surface Water Criterion)

ID
PFOS | PFOA | TOTAL PFAS

*Pore water samples collected between 1.5-3 ft below ground surface

2018 PORE WATER SAMPLING RESULTS - VAN ETTEN LAKE

**FORMER WURTSMITH AIR FORCE BASE
IOSCO COUNTY,
MICHIGAN**

0 1,600 3,200
Feet



Van Etten PW 10
0 | 0 | 0

Van Etten PW 07
0 | 0 | 8

Van Etten PW 12
6 | 0 | 27

Van Etten PW 04
10 | 0 | 50

Van Etten PW 02
0 | 0 | 29

Van Etten PW 11
0 | 6 | 75

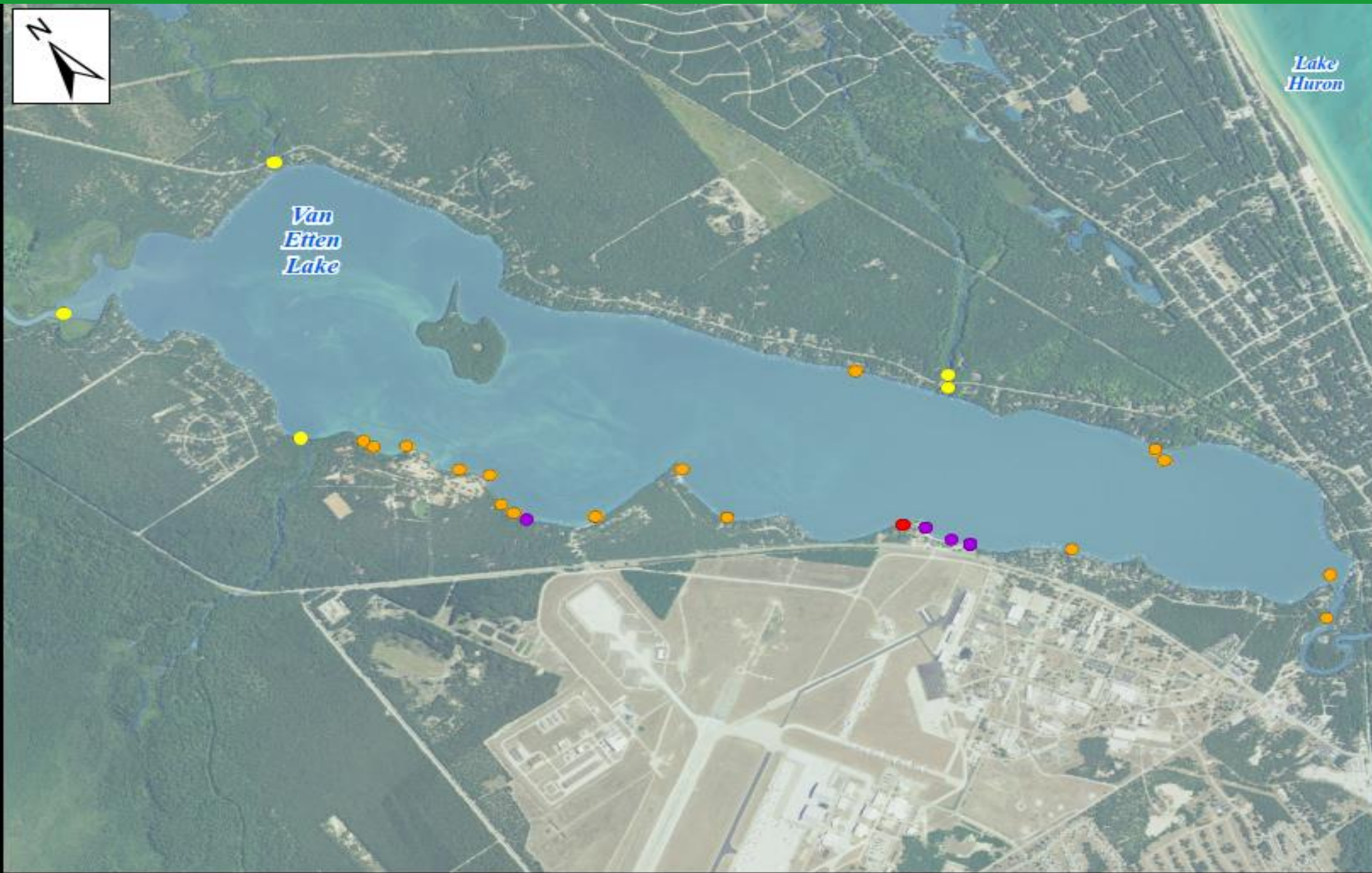
Van Etten PW 15
39 | 0 | 47


Van Etten PW 13
0 | 1 | 20

Van Etten PW 03
3 | 5 | 59

Van Etten PW 14
0 | 4 | 13

VAN ETTEN LAKE SURFACE WATER RESULTS





DRAFT11/30/2018

Legend

Surface Water Sample
Total PFAS (ppt)

- Non-Detect
- <12
- 12 - <50
- 50 - <100
- 100 - <1,000
- 1,000 - <2,500
- >2,500


*Samples collected between 2012-2018,
Highest concentration shown

VAN ETTEN LAKE
SURFACE WATER
TOTAL PFAS
SAMPLING RESULTS

FORMER WURTSMITH
AIR FORCE BASE
IOSCO COUNTY,
MICHIGAN

01,0003,200

Feet





Lake
Huron

Van
Etten
Lake



DRAFT 11/30/2018

Legend

Surface Water Sample
PFOS Concentration (ppt)

- Non-Detect
- >0 - 12
(Below Surface Water Criterion)
- >12
(Above Surface Water Criterion)

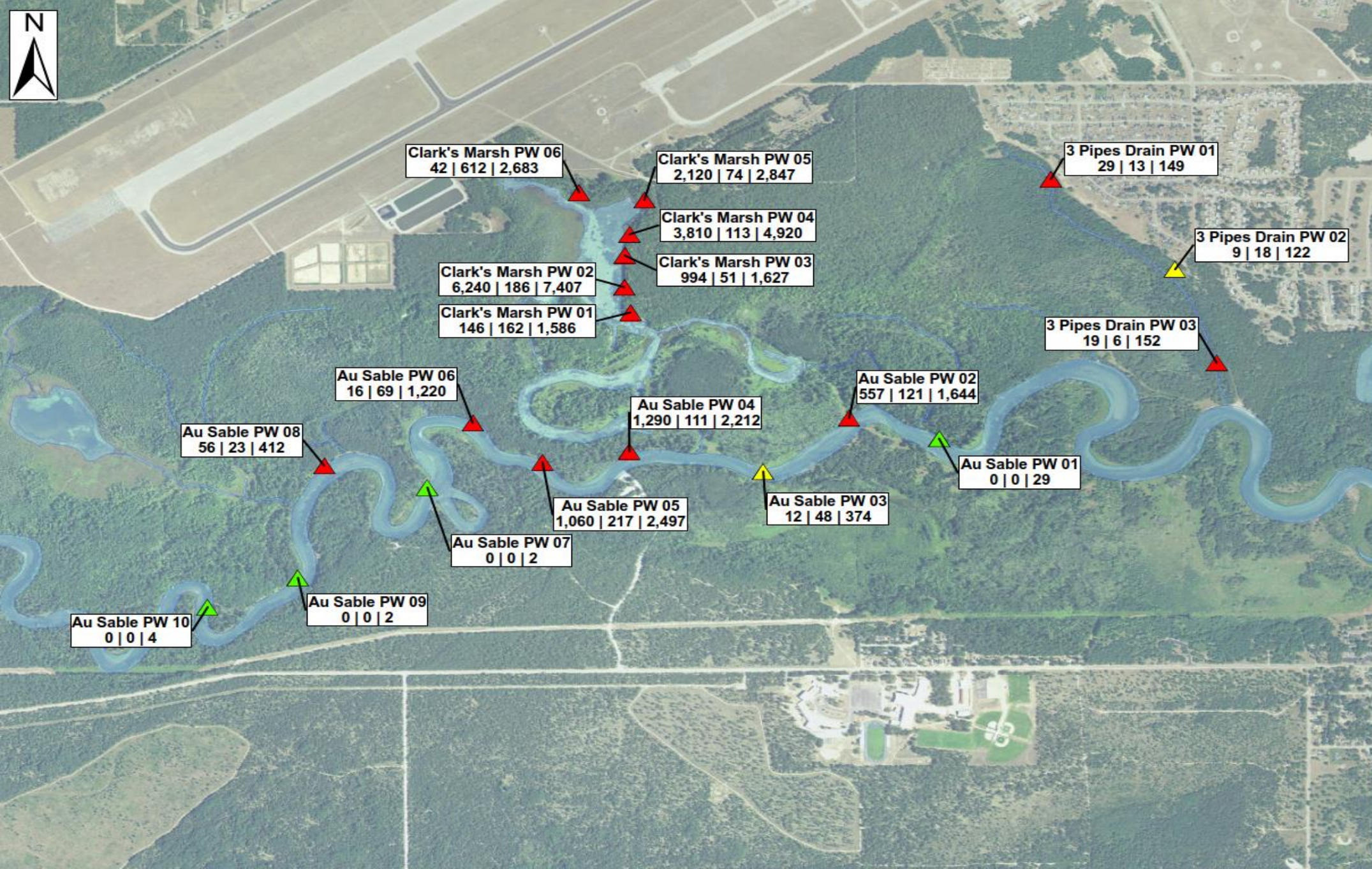
*Samples collected between 2012-2018,
Highest concentration shown

VAN ETTEN LAKE
SURFACE WATER
PFOS
SAMPLING RESULTS

FORMER WURTSMITH
AIR FORCE BASE
IOSCO COUNTY,
MICHIGAN



MDEQ PORE WATER SAMPLE RESULTS, AU SABLE AND CLARKS MARSH MAP



DRAFT 11/30/2018

Legend

Pore Water Sample

PFOS (ppt)

- Non-Detect
- >0 to 12 (Below Surface Water Criterion)
- >12 (Above Surface Water Criterion)

ID

PFOS | PFOA | TOTAL PFAS

*Pore water samples collected between 1.5-3 ft below ground surface

2018 PORE WATER SAMPLING RESULTS - AU SABLE RIVER AND CLARK'S MARSH

FORMER WURTSMITH AIR FORCE BASE
IOSCO COUNTY, MICHIGAN

0 1,200 2,400
Feet

AU SABLE RIVER & CLARK'S MARSH SURFACE WATER RESULTS

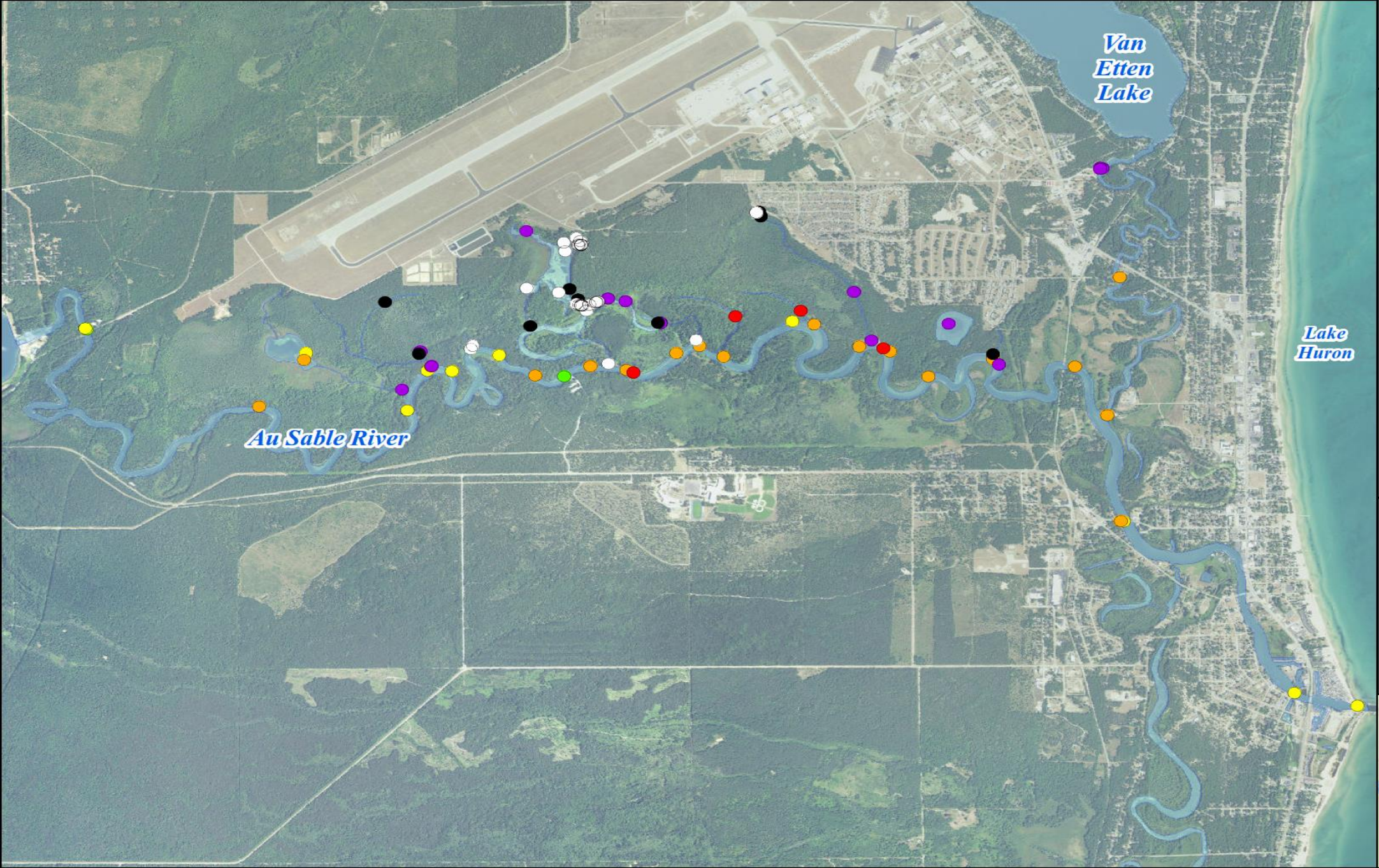


DRAFT 11/30/2018

Legend
Surface Water Sample
Total PFAS (ppt)

- Non-Detect
- <12
- 12 - <50
- 50 - <100
- 100 - <1,000
- 1,000 - <2,500
- >2,500

*Samples collected between 2012-2018,
Highest concentration shown



**AU SABLE RIVER,
CLARK'S MARSH
& VAN ETTEN CREEK
SURFACE WATER
TOTAL PFAS
SAMPLING RESULTS**

**FORMER WURTSMITH
AIR FORCE BASE
IOSCO COUNTY,
MICHIGAN**

0 2,400 4,800
Feet

North arrow pointing up.

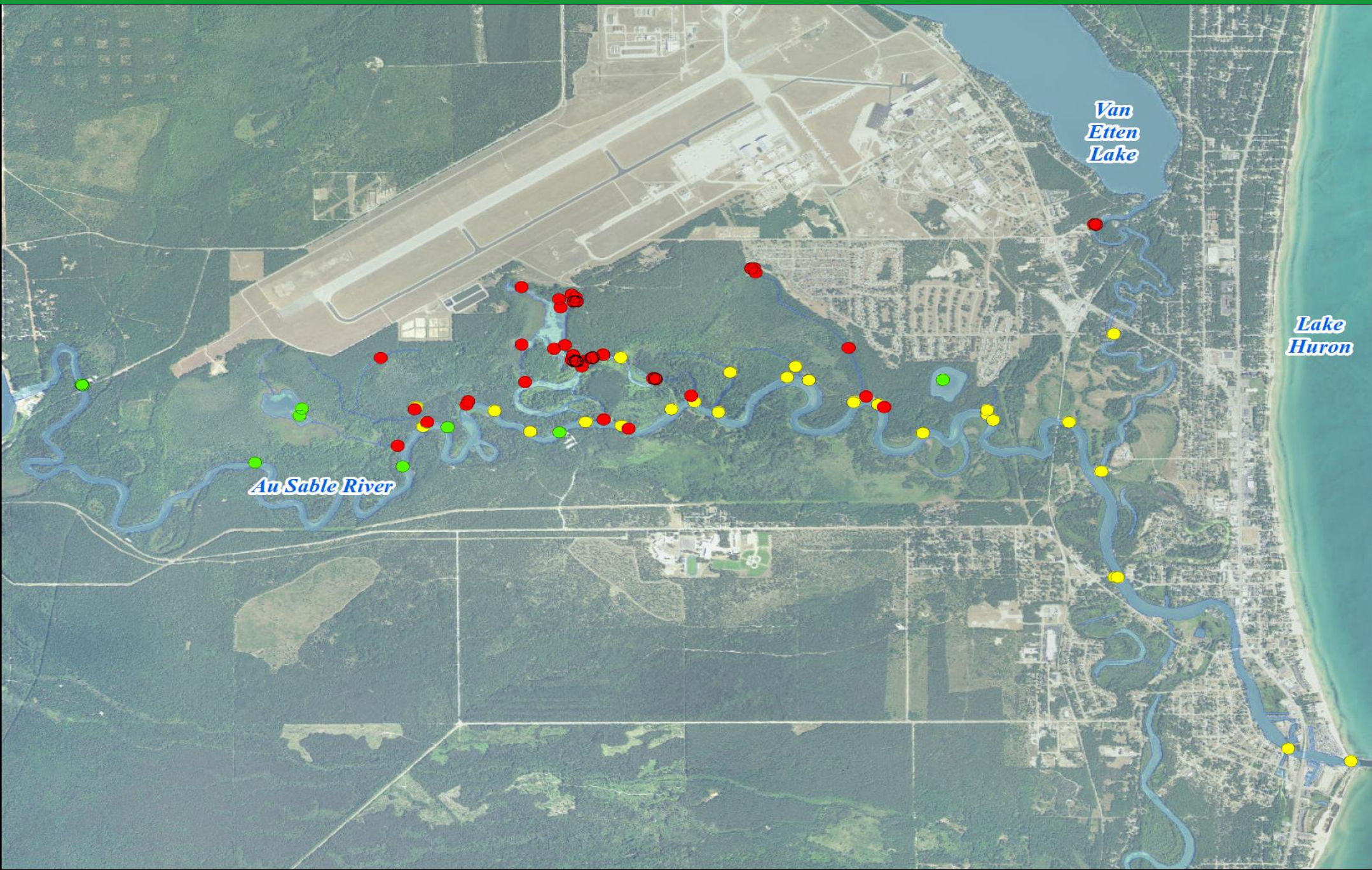




DRAFT 11/30/2018

- Legend**
Surface Water Sample
PFOS Concentration (ppt)
- Non-Detect
 - >0 - 12
(Below Surface Water Criterion)
 - >12
(Above Surface Water Criterion)

*Samples collected between 2012-2018,
Highest concentration shown



AU SABLE RIVER,
CLARK'S MARSH
& VAN ETTEN CREEK
SURFACE WATER
PFOS
SAMPLING RESULTS

FORMER WURTSMITH
AIR FORCE BASE
IOSCO COUNTY,
MICHIGAN

