

CAMP GRAYLING / LAKE MARGRETHE MDEQ UPDATE

Randall L. Rothe

Remediation and Redevelopment Division (MDEQ)

June 5, 2018



Residential Sampling Area

Legend

 Investigation Area



Residential Sampling Summary (DEQ)

Sample Type	Samples Collected	Analytical Results Received	Non-Detections	Detections Below Criteria	Detections Above Criteria
Drinking Water	308	238	197	41	1¹
Surface Water	4	4	0	3	1²
Foam	4	3	0	NA	NA
Cumulative	316	245	197	44	2







¹ USEPA Lifetime Health Advisory and Michigan Criteria of PFOA + PFOS > 70 ppt

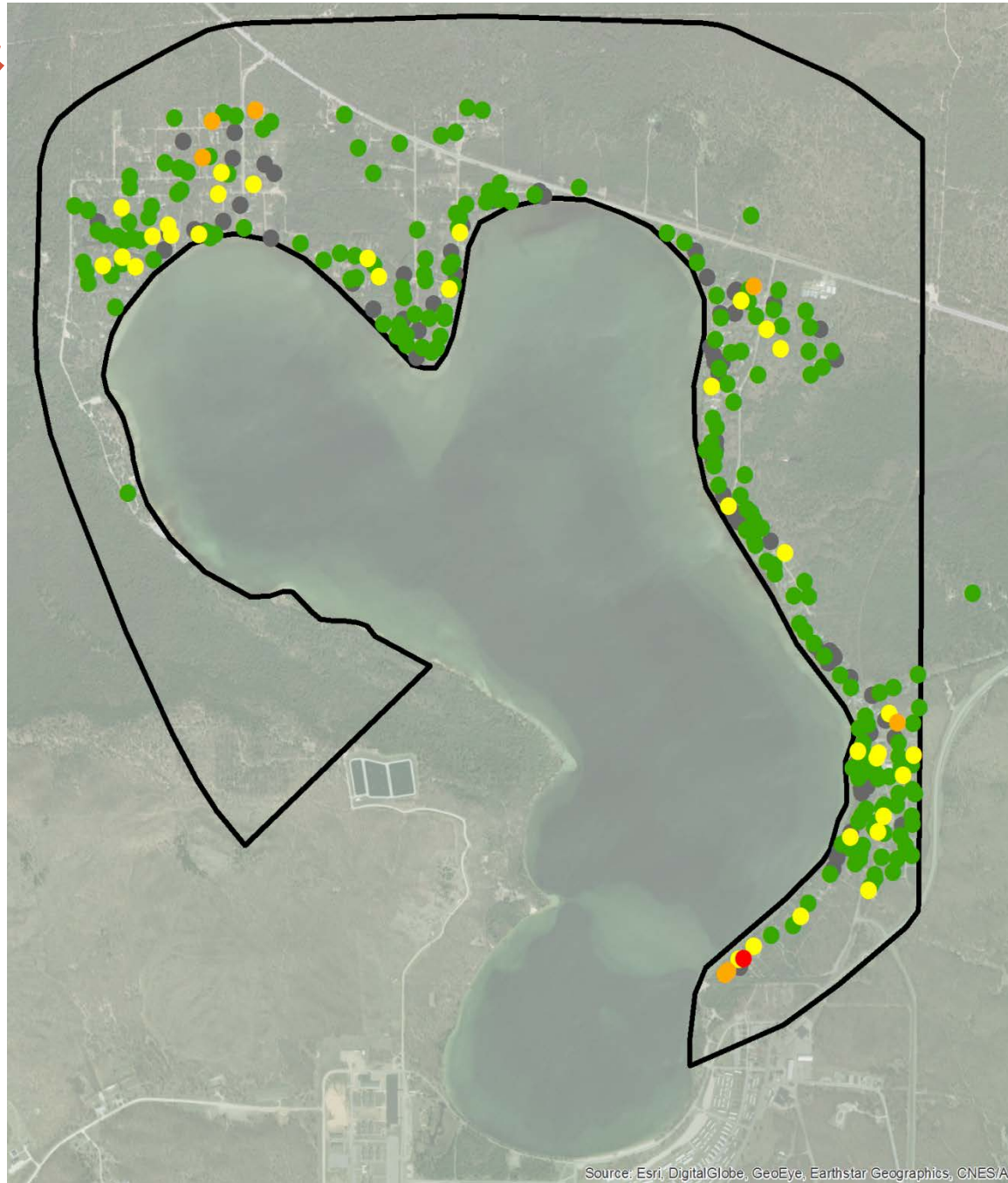
² MDEQ Groundwater Surface Water Interface Criteria of PFOS >12 ppt

Residential PFOA & PFOS Heat Map

Legend

PFOA + PFOS, ppt (308 total samples)

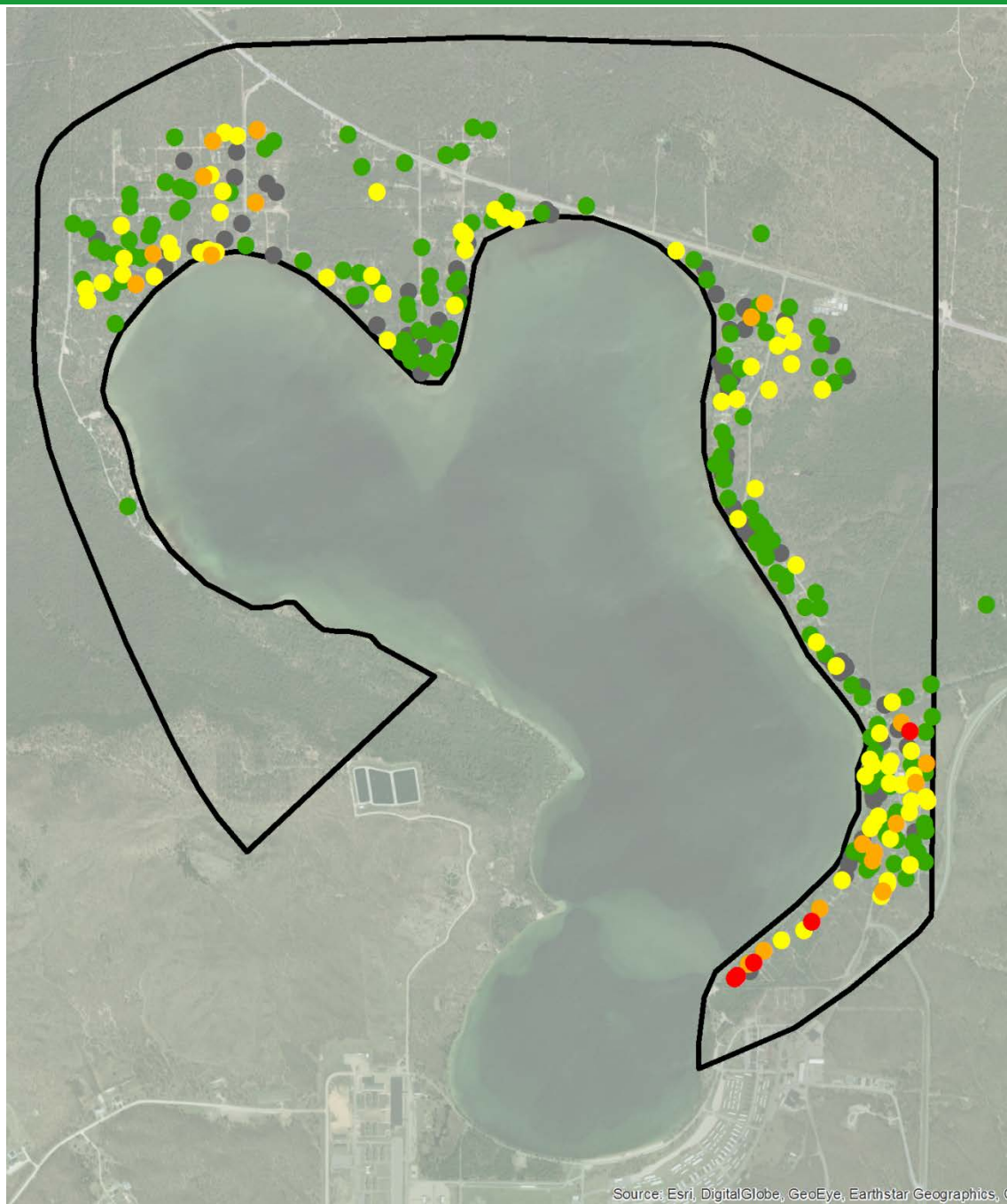
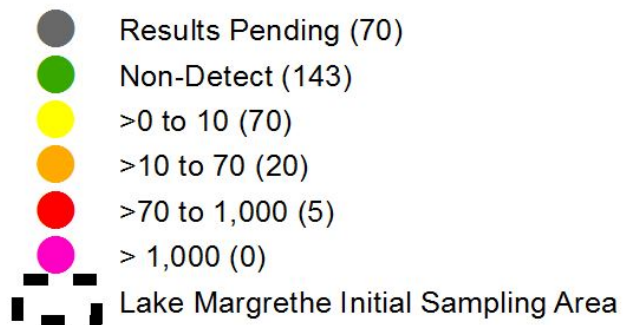
-  Results Pending (70)
-  Non-Detect (196)
-  >0 to 10 (34)
-  >10 to 70 (7)
-  > 70 (1)
-  Lake Margrethe Initial Sampling Area



Residential Total PFAS Heat Map

Legend

Total PFAS, ppt (308 total samples)



Surface Water/Foam Samples

- Four surface water locations sampled.
- Four foam sample locations.
- Continue foam/surface water at various locations around Lake Margrethe.

Legend

- Foam Collection
- Surface Water Sample

Location: Sample Type
Total PFAS (PFOA/PFOS/PFHxS)



Proposed Phase 1 Remedial Investigation (RI)

- Five groundwater monitoring locations.
 - Up to 3 monitoring wells per location.
 - Monitor PFAS concentrations in groundwater over time.
 - Determine direction of groundwater flow.
- Locations based on residential samples.

Legend

Proposed Sample Locations

◆ Monitoring Well



Randall L. Rothe

MDEQ - RRD

989-705-3416

rother@michigan.gov