



# MICHIGAN ECONOMIC UPDATE

Office of Revenue and Tax Analysis  
Michigan Department of Treasury

<http://www.michigan.gov/treasury>

## April 2016 Summary

**U.S. Economy:** Estimated real GDP growth in the first quarter of 2015 was revised up from a 0.5 percent annual rate increase to a 0.8 percent annual increase. New durable goods orders rose 1.9 percent from last April. Retail sales increased 3.0 percent from last April. The Institute for Supply Management (ISM) reported the current expansion has now lasted 83 months, but the ISM Production Management Index (PMI) dropped 4.3 points from last April and fell 1.0 point from a month ago. However, at 50.8, the April 2016 PMI did signal an expanding manufacturing sector for the second straight month. The ISM non-manufacturing index (NMI) signaled service sector expansion for the 75<sup>th</sup> straight month, but was down 0.8 of a point from last April. In April 2016, industrial production declined 1.1 percent from the year-ago level. This marked the eighth straight month industrial production fell below the year-ago level and the first time it has declined for eight consecutive months since December 2009. The capacity utilization rate fell 1.6 points from April 2015. The April 2015-April 2016 decline in the utilization rate marked the 14<sup>th</sup> consecutive y-o-y rate drop. Consumer sentiment fell 4.6 percentage points from April 2015. Housing starts were down 1.7 percent from last April but existing home sales increased 6.0 percent.

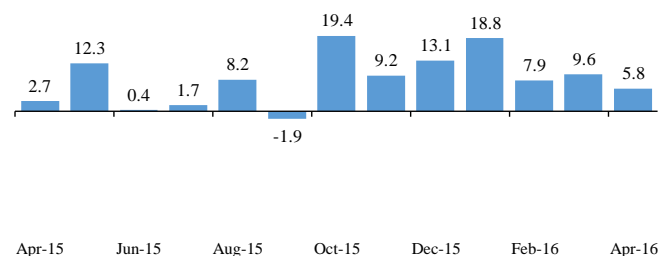
**Employment:** In April 2016, the Michigan unemployment rate remained unchanged from March at 4.8 percent and was down 0.8 of a percentage point from April 2015. The U.S. rate remained unchanged at 5.0 percent in April. As a result, April 2016 marked the third straight month that Michigan's unemployment rate was lower than the U.S. rate. Between April 2015 and April 2016, Michigan payroll employment gained a net 104,500 jobs (2.5 percent). Michigan payroll employment in April 2016 was up 5,800 jobs compared to April 2015. U.S. payroll employment was up 2.7 million jobs (1.9 percent) in April 2016 compared to a year ago.

**Auto Industry:** In April 2016, U.S. light vehicle sales rose 3.7 percent from last April to an annualized 17.3 million units. Between April 2015 and April 2016, the three-month average of Michigan vehicle production fell 2.6 percent while the three-month U.S. average was up 2.2 percent. Between April 2015 and April 2016, Michigan's share of U.S. vehicle production rose 0.5 of a percentage point to 19.6 percent.

**Inflation:** In April 2016, both the overall U.S. consumer price index (CPI) and the overall Detroit CPI rose 1.1 percent from a year ago. The core U.S. CPI (excluding food and energy) was up 2.1 percent from last April. The U.S. producer price index was unchanged from last year. The price of oil per barrel fell \$13.70 from last April to \$40.75.

**Michigan Metro Areas:** Compared to a year ago, April 2016 unemployment rates fell in all of Michigan's 17 major labor markets and in 80 of the State's 83 counties. Household employment rose in 16 of Michigan's 17 major labor market areas.

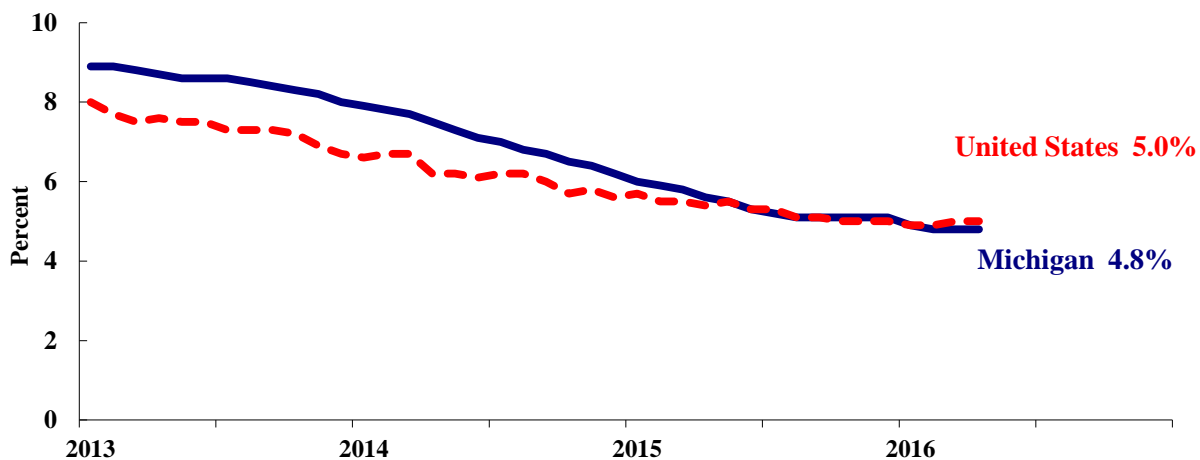
**Michigan Payroll Employment**  
**Posts Seventh Straight Monthly Increase**  
(change from previous month, thousands of jobs) <sup>(a)</sup>



### Labor Market Statistics

- In April 2016, the Michigan unemployment rate remained unchanged at 4.8 percent. The national unemployment rate also remained unchanged from March to April at 5.0 percent. As a result, April 2016 marked the third straight month that Michigan’s rate was below the U.S. rate. In addition, April 2016 marked the second month in a row in which the Michigan unemployment rate was 0.2 of a percentage point (or more) below the U.S. unemployment rate.
- In April 2016, Michigan’s unemployment rate was down 0.8 of a percentage point from a year ago. The April U.S. unemployment rate decreased 0.4 of a percentage point from a year ago. Monthly unemployment rates fluctuate in part due to statistical sampling errors and data revisions.

**Michigan and U.S. Monthly Unemployment Rates  
January 2013 to April 2016**



Source: Michigan Dept. of Technology, Management & Budget and Bureau of Labor Statistics, U.S. Dept. of Labor

- In April, the total number of people employed in Michigan rose 17,000 to 4,642,000 persons while the labor force rose 18,000. The statewide total number of unemployed workers rose 1,000 to 233,000.
- United States employment totaled 151.0 million persons in April. The labor force totaled 158.9 million and there were 7.9 million unemployed in April 2016.

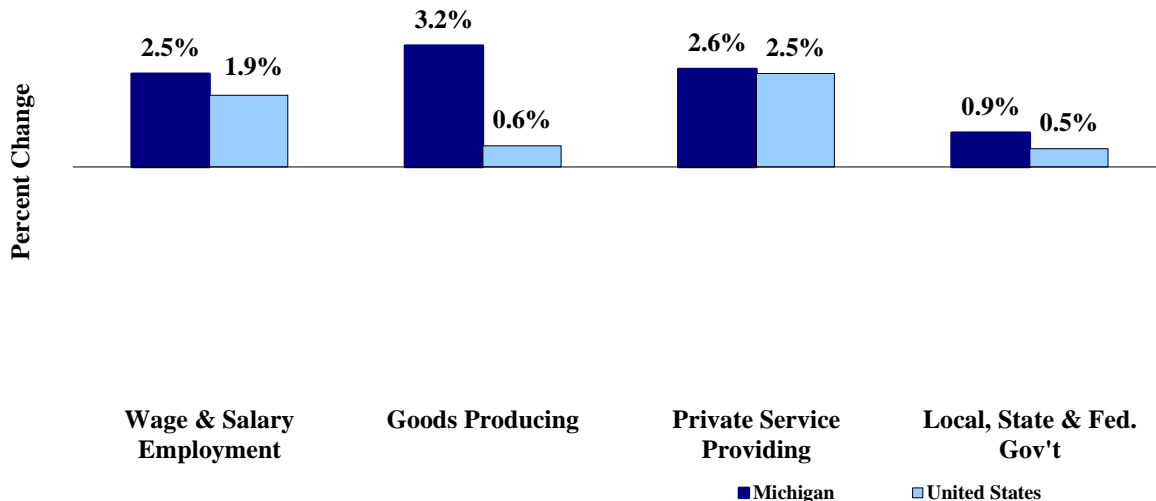
#### Employment by Place of Residence (in thousands)<sup>(a)</sup>

|                      | 2015<br>Average | Feb<br>2016 | Mar<br>2016 | Apr<br>2016 | Change From          |          |                    |           |
|----------------------|-----------------|-------------|-------------|-------------|----------------------|----------|--------------------|-----------|
|                      |                 |             |             |             | Prior Month<br>Level | %        | Last Year<br>Level | %         |
| <b>Michigan</b>      |                 |             |             |             |                      |          |                    |           |
| Labor Force          | 4,751           | 4,830       | 4,857       | 4,875       | 18                   | 0.4%     | 138                | 2.9%      |
| Employed             | 4,493           | 4,597       | 4,625       | 4,642       | 17                   | 0.4%     | 170                | 3.8%      |
| Unemployed           | 258             | 233         | 232         | 233         | 1                    | 0.4%     | -33                | -12.4%    |
| Unemployment Rate    | 5.4%            | 4.8%        | 4.8%        | 4.8%        | n.a.                 | 0.0% pts | n.a.               | -0.8% pts |
| <b>United States</b> |                 |             |             |             |                      |          |                    |           |
| Labor Force          | 157,130         | 158,890     | 159,286     | 158,924     | -362                 | -0.2%    | 1,892              | 1.2%      |
| Employed             | 148,834         | 151,074     | 151,320     | 151,004     | -316                 | -0.2%    | 2,495              | 1.7%      |
| Unemployed           | 8,296           | 7,815       | 7,966       | 7,920       | -46                  | -0.6%    | -603               | -7.1%     |
| Unemployment Rate    | 5.3%            | 4.9%        | 5.0%        | 5.0%        | n.a.                 | 0.0% pts | n.a.               | -0.4% pts |

## Employment by Place of Work (Payroll)

- From April 2015 to April 2016, Michigan payroll employment increased 104,500 jobs (2.5 percent). State payroll employment rose by 5,800 jobs in April from March. Nationally, April 2016 payroll employment rose 2,692,000 (1.9 percent) from a year ago and was up 160,000 from March.

### Payroll Employment Growth April 2015 to April 2016



Source: Bureau of Labor Statistics, Michigan Department of Technology, Management & Budget

- In the goods-producing sector, Michigan payroll employment increased 3.2 percent in April from a year ago while employment in the private service-providing sector increased 2.6 percent. From a year ago, April national payroll employment rose 0.6 percent in the goods-producing sector and increased 2.5 percent in the private service-providing sector. Government employment was up 0.9 percent from a year ago in Michigan. Nationwide, government employment was up 0.5 percent.
- Manufacturing weekly hours in Michigan were down 1.6 hours in April compared to last year.

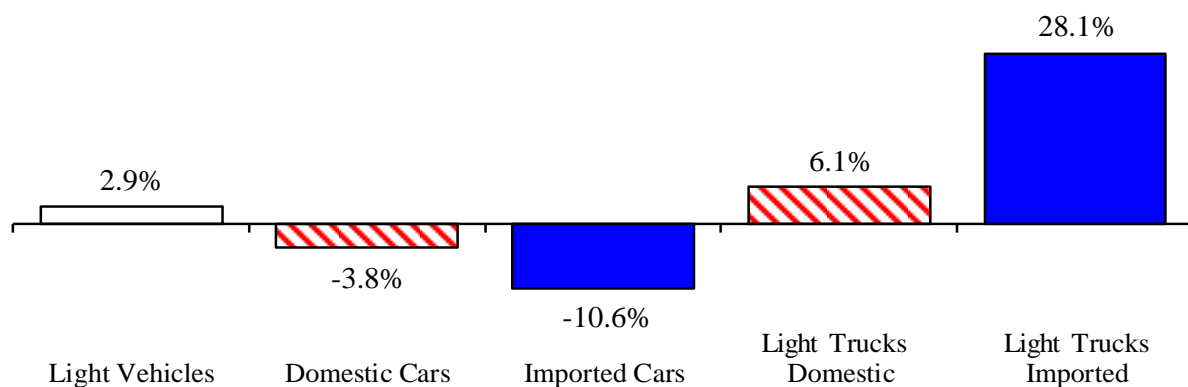
### Wage and Salary (Payroll) Employment (in thousands)<sup>(b)</sup>

|                            | Michigan        |             |             |                   | United States   |             |             |                   |
|----------------------------|-----------------|-------------|-------------|-------------------|-----------------|-------------|-------------|-------------------|
|                            | 2015<br>Average | Apr<br>2015 | Apr<br>2016 | Percent<br>Change | 2015<br>Average | Apr<br>2015 | Apr<br>2016 | Percent<br>Change |
| Wage & Salary Employment   | 4,243.7         | 4,226.2     | 4,330.7     | 2.5%              | 141,865         | 141,223     | 143,915     | 1.9%              |
| Goods Producing            | 742.9           | 739.2       | 763.0       | 3.2%              | 19,584          | 19,569      | 19,679      | 0.6%              |
| Manufacturing              | 587.3           | 582.9       | 602.7       | 3.4%              | 12,318          | 12,316      | 12,297      | -0.2%             |
| Private Service Providing  | 2,906.5         | 2,892.9     | 2,968.2     | 2.6%              | 100,275         | 99,683      | 102,159     | 2.5%              |
| Trade, Trans. & Utilities  | 770.7           | 769.8       | 778.5       | 1.1%              | 26,920          | 26,815      | 27,290      | 1.8%              |
| Services                   | 1,872.0         | 1,861.4     | 1,918.2     | 3.1%              | 62,480          | 62,034      | 63,840      | 2.9%              |
| Local, State & Fed. Gov't  | 594.3           | 594.1       | 599.5       | 0.9%              | 22,007          | 21,971      | 22,077      | 0.5%              |
| Manufacturing Weekly Hours | 44.2            | 44.3        | 42.7        | -1.6 hrs          | 41.8            | 41.8        | 41.7        | -0.1 hrs          |

## Motor Vehicle Industry Sales

- April 2016 U.S. light vehicle sales were up 5.2 percent from March and were up 3.7 percent from April 2015. At 17.3 million units, April 2016 marks the 26<sup>th</sup> straight month that the light vehicle annualized sales rate exceeded 16.0 million units and the ninth out of the most recent 10 months that the sales rate exceeded 17.0 million units.
- U.S. sales of domestic light vehicles increased 2.6 percent between April 2015 and April 2016. Foreign sales were up 8.0 percent over the same period. As a result, the foreign share of U.S. light vehicle sales rose 0.9 of a percentage point to 22.2 percent in April 2016.
- Auto sales decreased 6.9 percent compared to last April, while light truck sales were up 12.0 percent from April 2015. Heavy truck sales rose 5.7 percent to an annual rate of 448,000 units.

### Year-to-Date Light Truck Sales (Jan-Apr 2016) Up Substantially from Year Ago (Jan-Apr 2015) (percent change)



### Motor Vehicle Sales Statistics

(Millions, unless otherwise specified)

| Motor Vehicle Sales <sup>(c)</sup> | 2015<br>Total | Feb<br>2016 | Mar<br>2016 | Apr<br>2016 | 3 Month<br>Average | Change from<br>Year Ago |       |
|------------------------------------|---------------|-------------|-------------|-------------|--------------------|-------------------------|-------|
|                                    |               |             |             |             |                    | Level                   | %     |
| Autos                              | 7.5           | 7.2         | 6.7         | 6.8         | 6.9                | (0.5)                   | -6.9% |
| Domestics                          | 5.6           | 5.4         | 5.1         | 5.0         | 5.2                | (0.4)                   | -7.4% |
| Imports                            | 1.9           | 1.7         | 1.7         | 1.8         | 1.7                | (0.1)                   | -5.3% |
| Import Share                       | 25.4%         | 24.3%       | 24.7%       | 26.7%       | 25.2%              | 0.4% pts                |       |
| Light Trucks                       | 9.9           | 10.3        | 9.8         | 10.5        | 10.2               | 1.1                     | 12.0% |
| Domestics                          | 8.1           | 8.3         | 7.9         | 8.5         | 8.2                | 0.7                     | 9.5%  |
| Imports                            | 1.8           | 1.9         | 1.8         | 2.0         | 1.9                | 0.4                     | 23.8% |
| Import Share                       | 18.1%         | 19.0%       | 18.7%       | 19.2%       | 19.0%              | 1.8% pts                |       |
| Total Light Vehicles               | 17.4          | 17.4        | 16.5        | 17.3        | 17.1               | 0.6                     | 3.7%  |
| Heavy Trucks                       | 0.4           | 0.4         | 0.4         | 0.4         | 0.4                | 0.0                     | 5.7%  |
| Total Vehicles                     | 17.8          | 17.9        | 16.9        | 17.8        | 17.5               | 0.6                     | 3.8%  |

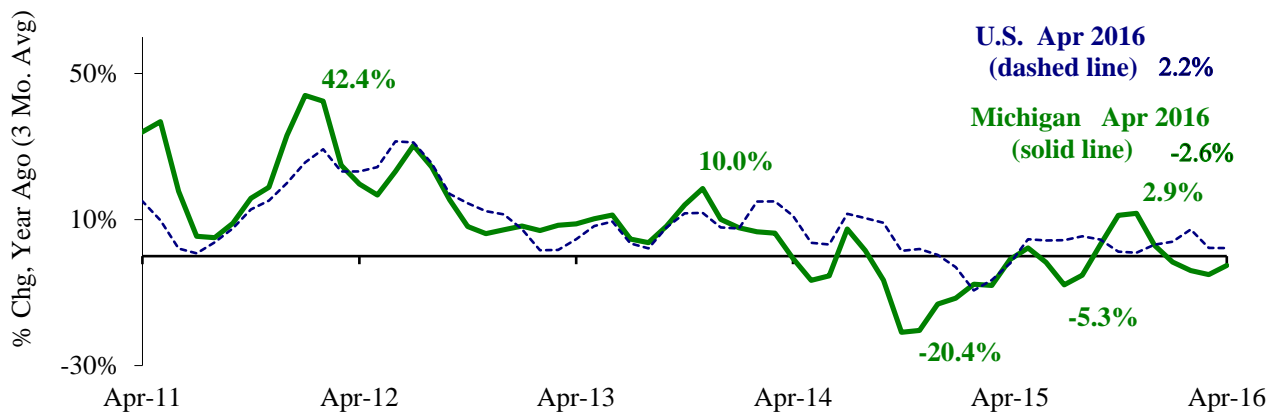
### Retail Inventories, Motor Vehicle and Parts Dealers<sup>(d)</sup> (billions of dollars)

|                       | 2015<br>Average | Dec-15  | Jan-16  | Feb-16  | 3 Month<br>Average | Change from<br>Year Ago |      |
|-----------------------|-----------------|---------|---------|---------|--------------------|-------------------------|------|
|                       |                 |         |         |         |                    | Level                   | %    |
| Inventories           | \$191.6         | \$198.1 | \$199.6 | \$202.2 | \$200.0            | \$17.2                  | 9.3% |
| Inventory/Sales Ratio | 2.08            | 2.09    | 2.12    | 2.14    | 2.12               | 0.05                    |      |

### Motor Vehicle Industry Production

- At 206,743 units, April 2016 Michigan motor vehicle production was up 1.3 percent from April 2015. National production decreased 1.5 percent from last April. The three-month average of vehicle production (February 2016-April 2016) was down 2.6 percent in Michigan and up 2.2 percent nationally, compared to a year ago.
- In April 2016, Michigan car production was up 1.1 percent from a year ago while State truck production rose 1.4 percent. Nationally, car production decreased 8.7 percent while U.S. truck production increased 2.7 percent.
- Michigan’s share of national vehicle production rose 0.5 percentage point to 19.6 percent in April 2016 from the year-ago level. Michigan’s share of U.S. car production was up 2.0 percentage points to 20.3 percent. Michigan’s share of U.S truck production decreased 0.2 of a percentage point to 19.2 percent.

### Michigan Motor Vehicle Production Down in April <sup>(e,f)</sup>



### Motor Vehicle Production Statistics

(Thousands, unless otherwise specified)

|   | 2015            |          |          |          |                 | Change from Year Ago |       |
|---|-----------------|----------|----------|----------|-----------------|----------------------|-------|
|   | Monthly Average | Feb 2016 | Mar 2016 | Apr 2016 | 3 Month Average | Level                | %     |
| <b>U.S. Production <sup>(e)</sup></b>     |                 |          |          |          |                 |                      |       |
| Autos                                     | 355.8           | 363.0    | 358.8    | 357.6    | 359.8           | (34.1)               | -8.7% |
| Trucks                                    | 644.1           | 693.7    | 717.3    | 699.8    | 703.6           | 18.4                 | 2.7%  |
| Total                                     | 1,000.0         | 1,056.7  | 1,076.1  | 1,057.4  | 1,063.4         | (15.7)               | -1.5% |
| <b>Michigan Production <sup>(f)</sup></b> |                 |          |          |          |                 |                      |       |
| Autos                                     | 68.3            | 68.6     | 63.2     | 72.7     | 68.1            | 0.8                  | 1.1%  |
| Trucks                                    | 125.6           | 134.5    | 138.0    | 134.1    | 135.5           | 1.9                  | 1.4%  |
| Total                                     | 193.9           | 203.1    | 201.1    | 206.7    | 203.6           | 2.7                  | 1.3%  |
| Michigan as % of U.S.                     | 19.4%           | 19.2%    | 18.7%    | 19.6%    | 19.2%           | 0.5% pts             |       |

## Local Area Unemployment Rates Decline in All of Michigan’s 17 Local Areas (Not Seasonally Adjusted)

In April 2016, the unemployment rates in Michigan’s 17 labor market areas ranged from a low of 2.7 percent in the Ann Arbor Metropolitan Statistical Area (MSA) to a high of 7.5 percent in the Northeast Lower Michigan region. The April 2016 median unemployment rate was 4.4 percent, which is down 0.5 of a percentage point from last April’s 4.9 percent median rate.

Compared to a year ago, the April 2016 unemployment rate fell in all of Michigan’s 17 labor market areas. The median rate decline was 0.6 of a percentage point. The Detroit-Warren-Dearborn MSA reported the largest rate decrease of 1.0 percentage point, followed by five labor market areas with a 0.8 of a percentage point rate decline. The Northeast Lower Michigan region recorded the smallest rate decline of 0.4 of a percentage point.

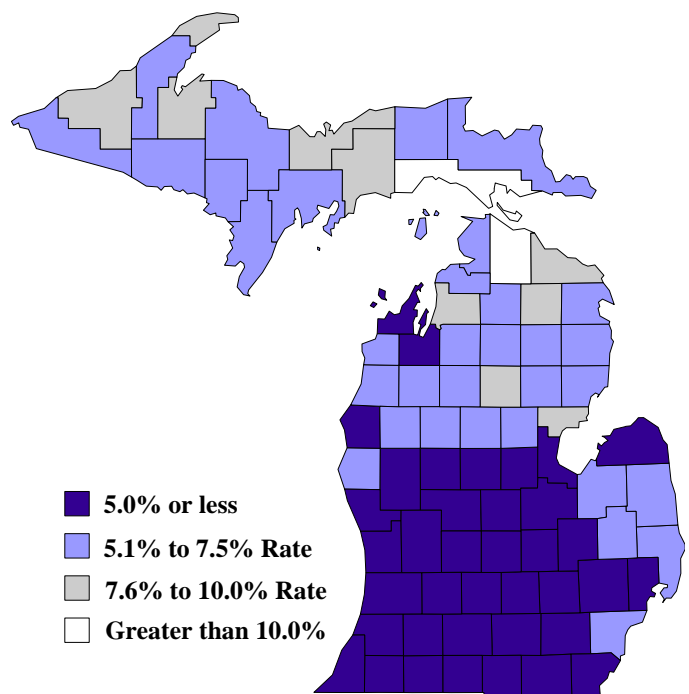
Between April 2015 and April 2016, household employment rose in 16 of Michigan’s 17 labor market areas. The median employment increase was 2.7 percent. The Ann Arbor MSA reported the largest year-over-year employment increase at 5.2 percent, followed by the Detroit-Warren-Dearborn MSA with a 4.1 percent increase. The Jackson MSA reported a slight year-over-year employment decrease of 0.1 percent. The labor force rose in 16 labor market areas and fell in one area. The Ann Arbor MSA reported the largest percent increase in labor force at 4.6 percent, followed by the Detroit-Warren-Dearborn MSA with a 3.1 percent increase. The Jackson MSA recorded a 0.7 percent labor force decline compared to a year ago.

Between April 2015 and April 2016, the unemployment rate fell in 80 of Michigan’s 83 counties. The median April 2016 rate decline was 0.7 of a percentage point. Schoolcraft County reported the largest unemployment rate decline at 2.4 percentage points, followed by Lake County with a 2.2 percentage points decline. In April 2016, the unemployment rate was below 7.0 percent in 61 of Michigan’s 83 counties. In April 2015, 55 Michigan counties had an unemployment rate below 7.0 percent. In April 2016, two Michigan counties had an unemployment rate above 10.0 percent compared with April 2015 when seven Michigan counties had an unemployment rate over 10.0 percent.

### Local Area Unemployment Rates<sup>(g)</sup>

| <u>Local Area</u>       | <u>Apr<br/>2015<br/>Rate</u> | <u>Mar<br/>2016<br/>Rate</u> | <u>Apr<br/>2016<br/>Rate</u> |
|-------------------------|------------------------------|------------------------------|------------------------------|
| Michigan                | 5.1%                         | 5.1%                         | 4.3%                         |
| Ann Arbor               | 3.3%                         | 3.0%                         | 2.7%                         |
| Battle Creek            | 4.7%                         | 4.6%                         | 4.1%                         |
| Bay City                | 5.6%                         | 5.6%                         | 4.9%                         |
| Detroit-Warren-Dearborn | 5.5%                         | 5.6%                         | 4.5%                         |
| Flint                   | 5.7%                         | 5.5%                         | 4.9%                         |
| Grand Rapids-Wyoming    | 3.5%                         | 3.4%                         | 2.9%                         |
| Jackson                 | 4.9%                         | 4.8%                         | 4.4%                         |
| Kalamazoo-Portage       | 4.3%                         | 4.2%                         | 3.7%                         |
| Lansing-East Lansing    | 4.1%                         | 3.8%                         | 3.3%                         |
| Midland                 | 4.6%                         | 4.8%                         | 4.0%                         |
| Monroe                  | 4.2%                         | 4.0%                         | 3.6%                         |
| Muskegon                | 5.4%                         | 5.3%                         | 4.6%                         |
| Niles-Benton Harbor     | 4.8%                         | 4.8%                         | 4.1%                         |
| Saginaw                 | 5.4%                         | 5.3%                         | 4.6%                         |
| Upper Peninsula         | 7.1%                         | 7.2%                         | 6.5%                         |
| Northeast Lower Mich    | 7.9%                         | 9.4%                         | 7.5%                         |
| Northwest Lower Mich.   | 6.3%                         | 6.7%                         | 5.5%                         |

### County Unemployment Rates April 2016 <sup>(g)</sup>



## Consensus Economic Forecast Continued Recovery

On May 17, 2016, the Administration, House Fiscal Agency and Senate Fiscal Agency met and agreed to a consensus economic forecast for 2016, 2017 and 2018. Below are highlights of that agreement:

- Real GDP is forecast to increase 1.9 percent in 2016. Real GDP is then expected to grow 2.6 percent in 2017 and 2.4 percent in 2018. The May 2016 Conference’s projected growth rate for 2016 is down 0.6 of a percentage point from January 2016 Conference projections. May projected growth in 2017 is up 0.1 of a percentage point from January projections and the May growth forecast for 2018 is unchanged from January.
- The U.S. unemployment rate is forecast to fall over the next three years from 5.3 percent rate in 2015. The rate is forecast to fall to 4.9 percent for 2016 and then decline to 4.8 percent in 2017 and 4.6 percent in 2018. Compared with the January 2016 Conference forecast, the May 2016 Consensus forecast of the U.S. unemployment rate is unchanged for 2016, up 0.1 point for 2017 and unchanged for 2018.
- The May 2016 Consensus forecasts light vehicle sales to total 17.6 million units in 2016 and a record high 17.7 million units in both 2017 and 2018. Compared with the January Consensus, the May vehicle sales projections are down for all three years. The May sales projection is down 0.4 million units for 2016, off 0.3 million units for 2017 and down 0.2 million units for 2018.
- The May 2016 Consensus projects that Michigan wage and salary employment will rise 1.8 percent in 2016 which is 0.6 percentage point faster than the January forecast. The May Consensus forecasts a 1.0 percent employment increase in 2017 which is 0.3 percentage point slower than the January forecast. The May 2016 Consensus projects a 1.2 percent employment increase in 2018, which is 0.2 percentage point faster than in January.
- According to the May 2016 Consensus, the Michigan unemployment rate will fall to 5.0 percent in 2016, 4.9 percent in 2017 and 4.7 percent in 2018. Compared to the January 2016 Consensus forecast, the May Consensus Michigan jobless rate forecast is down 0.1 percentage point for 2016, unchanged for 2017 and down 0.1 point for 2018.
- Michigan personal income is projected to rise 3.7 percent in 2016, increase 3.9 percent in 2017 and rise 4.5 percent in 2018. Wages and salaries are expected to increase 3.5 percent in 2016, rise 3.3 percent in 2017 and increase 3.9 percent in 2018.

### U.S. Economic Forecast Modest Growth

### Michigan Economic Forecast Growing Labor Market



## U.S. Economic Conditions

|   | <u>Jan-16</u> | <u>Feb-16</u> | <u>Mar-16</u> | <u>Apr-16</u> | <u>Change from<br/>Year Ago</u>           |
|---|---------------|---------------|---------------|---------------|---|
| <b>KEY ECONOMIC INDICATORS</b>                    |               |               |               |               |   |
| Consumer Sentiment <sup>(h)</sup>                 | 92.0          | 91.7          | 91.0          | 89.0          | -4.6 points                               |
| ISM Manufacturing Index <sup>(i)</sup>            | 48.2          | 49.5          | 51.8          | 50.8          | -4.3 points                               |
| ISM Non Manufacturing Index <sup>(i)</sup>        | 53.5          | 53.4          | 54.5          | 55.7          | -0.8 points                               |
|   | <u>2015.2</u> | <u>2015.3</u> | <u>2015.4</u> | <u>2016.1</u> |   |
| Business Executives' Confidence <sup>(j)</sup>    | 58.0          | 48.0          | 45.0          | 47.0          | -10.0 points                              |
| <b>INFLATION <sup>(k)</sup></b>                   |               |               |               |               |   |
| <b>1982-84 = 100 (CPI)</b>                        | <u>Jan-16</u> | <u>Feb-16</u> | <u>Mar-16</u> | <u>Apr-16</u> | <u>Change from<br/>Year Ago</u>           |
| <b>Nov 2009 = 100 (PPI)</b>                       |               |               |               |               |   |
| U.S. Consumer Price Index                         | 236.9         | 237.1         | 238.1         | 239.3         | 1.1%                                      |
| Detroit CPI                                       | NA            | 218.4         | NA            | 221.4         | 1.1%                                      |
| U.S. Producer Price Index                         | 109.5         | 109.5         | 109.7         | 109.8         | 0.0%                                      |
| <b>INTEREST RATES</b>                             |               |               |               |               |   |
| 90 Day T-Bill <sup>(l)</sup>                      | 0.26%         | 0.31%         | 0.29%         | 0.23%         | 0.21% points                              |
| Aaa Corporate Bonds <sup>(l)</sup>                | 4.00%         | 3.96%         | 3.82%         | 3.62%         | 0.10% points                              |
| <b>INDUSTRIAL PRODUCTION <sup>(l)</sup></b>       |               |               |               |               |   |
|   | 104.6         | 104.4         | 103.5         | 104.1         | -1.1%                                     |
| <b>CAPACITY UTILIZATION <sup>(l)</sup></b>        |               |               |               |               |   |
|   | 75.7%         | 75.6%         | 74.9%         | 75.4%         | -1.6% points                              |
| <b>RETAIL SALES <sup>(d)</sup></b>                |               |               |               |               |   |
|   | \$448.0       | \$449.3       | \$447.8       | \$453.4       | 3.0%                                      |
| <b>HOUSING STARTS and SALES</b>                   |               |               |               |               |   |
| (Millions Annual Rate)                            | <u>Jan-16</u> | <u>Feb-16</u> | <u>Mar-16</u> | <u>Apr-16</u> | <u>% Change From<br/>Year Ago</u>         |
| Housing Starts <sup>(d)</sup>                     | 1.128         | 1.213         | 1.099         | 1.172         | -1.7%                                     |
| Existing Home Sales <sup>(m)</sup>                | 5.470         | 5.070         | 5.360         | 5.450         | 6.0%                                      |
| <b>DURABLE GOODS ORDERS <sup>(p)</sup></b>        |               |               |               |               |   |
|   | \$231.8       | \$224.1       | \$228.3       | \$235.9       | 1.9%                                      |
| <b>PERSONAL INCOME <sup>(c)</sup></b>             |               |               |               |               |   |
| (Billions of Dollars)                             | <u>2015.1</u> | <u>2015.2</u> | <u>2015.3</u> | <u>2015.4</u> | <u>% Change From<br/>Year Ago</u>         |
| Michigan  | \$413.5       | \$418.5       | \$423.5       | \$428.8       | 4.6%                                      |
| U.S.  | \$15,064.4    | \$15,264.6    | \$15,422.4    | \$15,544.9    | 4.0%                                      |
| <b>GROSS DOMESTIC PRODUCT</b>                     |               |               |               |               |   |
| (Billions of Chained 2009 Dollars) <sup>(c)</sup> | <u>2015.2</u> | <u>2015.3</u> | <u>2015.4</u> | <u>2016.1</u> | <u>Annualized % Chg<br/>From Last Qtr</u> |
|   | \$16,333.6    | \$16,414.0    | \$16,470.6    | \$16,505.1    | 0.8%                                      |



**SOURCES AND NOTES:**

- <sup>(a)</sup> Seasonally adjusted. Sources: Bureau of Labor Statistics, U.S. Department of Labor and Michigan Department of Technology, Management and Budget.
- <sup>(b)</sup> Bureau of Labor Statistics, U.S. Department of Labor (BLS 790).
- <sup>(c)</sup> Seasonally adjusted annual rates. Source: Bureau of Economic Analysis, U.S. Department of Commerce.
- <sup>(d)</sup> Bureau of the Census, U.S. Department of Commerce
- <sup>(e)</sup> Automotive News.
- <sup>(f)</sup> Michigan Department of Treasury.
- <sup>(g)</sup> Michigan Department of Technology, Management and Budget.
- <sup>(h)</sup> University of Michigan Survey of Consumers.
- <sup>(i)</sup> Institute for Supply Management (ISM), formerly NAPM.
- <sup>(j)</sup> The Conference Board.
- <sup>(k)</sup> Bureau of Labor Statistics, U.S. Department of Labor.
- <sup>(l)</sup> Seasonally adjusted rates (except interest rates). Federal Reserve System Board of Governors. 2007 equals 100. Treasury bill rate (secondary market).
- <sup>(m)</sup> National Association of Realtors.