

WARREN

DUMP BODIES

&

SPREADERS

Table of Contents

WARREN DUMP BODIES

FL Series.....	4
FLS Series.....	6
MSF Series.....	8
U/F-451.....	10
WAR Series.....	12
WS-700.....	14
WXL Series.....	16

WARREN SPREADERS

AC-620A.....	18
AC-1820.....	20
AC-2420A.....	22
E/AC-2420A.....	24
LF-2420A.....	26
LF-3020A.....	28
LS-3420.....	30
LST-3420.....	32
WFT-2010 Series.....	34



WARREN, INC.

Warren Inc. located in Collins, Mississippi continues to offer a complete line of diversified equipment for all your truck equipment needs. Betty Sampley has over 30 years experience in the truck equipment industry serving our Northeastern states. We would appreciate the opportunity to quote you on dump bodies, AG & Ice control spreaders, dump walking floor & transfer trailers, tarp systems, ez rider suspensions, 5th wheels, hoists, hydraulic cylinders, as well as a vast product line offering of parts. Let Warren Inc. be your future one stop shop, we look forward to hearing from you.



WXL crossmemberless available in AR-450, 201 & 304 Stainless Steel and Hi-Tensile Steel. Sizes available in 8' thru 22' body lengths .



GS gravity feed spreader for surface treatment paving. Available in 84" & 87" widths with tailgate heights up to 50".



WAR Demolition Hardox AR450 body with high lift tailgate. Available in 12' thru 20' body lengths.



C-Series Contractor bodies available in 10' thru 18 lengths. Optional fold down sides. Shown with split barn center opening tailgate.



Hi-tensile Steel, AR450 and aluminum trailers, Ejector & Walking floor trailers and dump bodies to meet all your equipment needs.



We have a complete line of ice and snow control spreaders as well as Ag spreaders for lime, fertilizer and litter.



EZ RIDE, Tag or pusher axles both rigid and steerable are available with or without tires and wheels.



Ejector on a steel trailer. Available in 96" and 102" wide steel, stainless or aluminum construction. Many lengths, heights and cubic capacity are available.



Warren 5th Wheels are available in both single cylinder 30 ton as well as twin cylinder 45 ton. Our 5th wheels let you better utilize your tractor as a spotter at night and road tractor during the day. Low 8-1/2" mounting height approved for on and off road use.

As a premier dump body manufacturer, our unibody design is offered in light weight, AR450 and stainless steel. We pride ourselves on producing quality products that will last. With our wide variety of models and commitment to meeting customer specifications, we feel certain we have the right dump body for you. Whether you are a municipality looking for the next addition to your fleet or looking for a demolition unit for a big job, a Warren dump body is right for you!

The Warren LST-3420 spreader incorporates a heavy duty hydraulic system with a large capacity high tensile steel hopper body to provide extended product life.





Heavy Duty Dump Body

Warren's FL Series dump bodies are designed for mounting on heavy duty tandem and tri-axle truck chassis.



Figure: Change Image and put info here

Features & Benefits of Warren FL Series

- ASTM A1011 A-45 High Tensile Steel
- Body & NTEA rated hoist manufactured by Warren
- Continuous welding throughout body for additional strength
- Available in 12'-18' lengths
- Full depth rear corner post with full depth rear crossmember
- "Stacked Type" understructure





Heavy Duty Dump Body

Body

Construction:	<ul style="list-style-type: none"> • ASTM A1011 A-45 High Tensile Steel • Dimensions: <ul style="list-style-type: none"> - Length - 12ft to 18ft - Outside width - 8ft - Inside width - 7ft 3 In
Understructure:	<ul style="list-style-type: none"> • 4" - 5.4#/ft. channel crossmembers • 7" - 9.8#/ft. channel longitudinals (12'-14') • 7" - 12.25#/ft. channel longitudinals (15'-18')
Floor:	3/16" high tensile steel w/ 2" side to floor radius
Sides:	<ul style="list-style-type: none"> • 10 GA steel w/4" x 4" x 1/8" boxed tubing top rail • 6" wide boxed vertical side braces • 8" high front & rear board pockets • 10" full depth rear corner posts w/ skirt • 10" wrap around front corner posts
Front Bulkhead:	<ul style="list-style-type: none"> • 10 GA steel w/ die-formed horizontal braces • Dog house w/ access door
Tailgate:	<ul style="list-style-type: none"> • 10 GA steel - 8" higher than sides • 9-panel braced • Offset flame cut steel plate upper hinge; Double lower sockets w/ overhooks • Air operated gate latch



Additional Options

Cabshield:	1/4 - 19", 3/4 - 36", 1/2 - 24" or full - 43"
Special Tailgate:	<ul style="list-style-type: none"> • High Lift gate • Material gate (Coal doors)
Spreader Apron:	8" Weld-on
Paint:	Custom Paint
TARP:	Installable

Hoists

Type	Telescope frameless Head or Trunnions
Model	VTLW - 63/74
Pivot Pin	2 7/16" dia.
Mounting height	11 1/2"
Pivot	12"

Cylinder

Barrel O.D.	5 7/8" (VTLW - 63) 6 11/16" (VTLW - 74)
Stage	3 or 4 stages
Stroke	101", 110", 124", 135", 170"



Heavy Duty Package Dump Body

Warren's FLS Series dump bodies are designed for mounting on heavy duty tandem and tri-axle truck chassis. They have strong "Stacked Type" under-structure for extended life. These bodies are engineered for contractors and governmental agencies for hauling sand, gravel, asphalt mix, and other materials.



Figure: Change the image and update the description.

Features & Benefits of Warren FLS Series

- ASTM A1011 A-45 High Tensile Steel
- Body & NTEA rated hoist manufactured by Warren
- Continuous welding throughout body for additional strength
- Available in 13'-16' lengths
- Full depth rear corner post with full depth rear crossmember
- "Stacked Type" understructure





Heavy Duty Package Dump Body

Body

Construction:	<ul style="list-style-type: none"> • ASTM A1011 A-45 High Tensile Steel • Dimensions: <ul style="list-style-type: none"> - Length - 13ft to 16ft - Outside width - 8ft - Inside width - 7ft 3 In
Understructure:	<ul style="list-style-type: none"> • 4" - 5.4#/ft. channel crossmembers • 7" - 12.25#/ft. channel longitudinals
Floor:	3/16" high tensile steel w/ 2" side to floor radius
Sides:	<ul style="list-style-type: none"> • 10 GA steel w/4" x 4" x 1/8" boxed tube top rail • 6" wide boxed vertical and horizontal side braces • 1/4" x 2" Tarp rails • 6" high front & rear board pockets • 10" full depth rear corner posts w/ skirt • 10" wrap around front corner posts
Front Bulkhead:	<ul style="list-style-type: none"> • 10 GA steel w/ die-formed horizontal braces • Dog house w/ access door
Tailgate:	<ul style="list-style-type: none"> • 10 GA steel - 6" higher than sides • 9-panel braced w/ 6" slope • Offset flame cut steel plate upper hinge; Double lower sockets w/ overhooks • Air operated gate latch



Figure: Change the image and update the description.

Hoists

Type	Telescope sub-frame head
Model	VTLW - 63 series
Pivot Pin	1 15/16" dia.
Mounting height	11 1/2"
Pivot	12"

Cylinder

Barrel O.D.	5 7/8" (VTLW - 63)
Stages	3 stage
Stroke	110", 124"

Package Sizes

Body Length	Hoist Model	Side Height	Front Height	Rear Height	Capacity (Cu. Yd.)
13	VTLW - 63110	42	48	48	11/13
13.5	VTLW - 63110	42	48	48	12/14
14	VTLW - 63110	42	48	48	12/14
15	VTLW - 63124	42	48	48	13/15
16	VTLW - 63124	42	48	48	14/16

Additional Options

Cabshield:	1/4 - 19", 3/4 - 36", 1/2 - 24" or full - 43"
Spreader Apron:	8" Weld-on
Paint:	Custom Paint
TARP	Installable



Heavy Duty Package Dump Body

Warren's MSF Series dump bodies are designed for mounting on heavy duty tandem and tri-axle truck chassis. They have strong "Stacked Type" under-structure for extended life. These bodies are engineered for contractors and governmental agencies for hauling sand, gravel, asphalt mix, and other materials.



Figure: Change the image and update the description.

Features & Benefits of Warren MSF Series

- ASTM A1011 A-45 High Tensile Steel
- Body & NTEA rated hoist manufactured by Warren
- Continuous welding throughout body for additional strength
- Available in 13'-16' lengths
- Full depth rear corner post with full depth rear crossmember
- "Stacked Type" understructure





Heavy Duty Package Dump Body

Body

Construction:	<ul style="list-style-type: none"> • ASTM A1011 A-45 High Tensile Steel • Dimensions: <ul style="list-style-type: none"> - Length - 13ft to 16ft - Outside width - 8ft - Inside width - 7ft 3 In
Understructure:	<ul style="list-style-type: none"> • 4" - 5.4#/ft. channel crossmembers • 5" - 9.0#/ft. channel longitudinals
Floor:	3/16" high tensile steel w/ 2" side to floor radius
Sides:	<ul style="list-style-type: none"> • 10 GA steel w/4" x 4" x 1/8" boxed tube top rail • 6" wide boxed vertical and horizontal side braces • 1/4" x 2" Tarp rails • 6" high front, center & rear board pockets • Sloped full depth rear corner posts w/ skirt • 10" wrap around front corner posts
Front Bulkhead:	<ul style="list-style-type: none"> • 10 GA steel w/ die-formed horizontal braces • Dog house w/ access door
Tailgate:	<ul style="list-style-type: none"> • 10 GA steel - 6" higher than sides • 9-panel braced w/ 6" slope • Offset flame cut steel plate upper hinge; Double lower sockets w/ overhooks • Air operated gate latch



Hoist

Type	Telescope sub-frame head
Model	VTW - 63/74 series
Sub-frame	8" - 11.5#/ft. channel
Pivot Pin	1 15/16" dia.
Mounting height	12 1/4"
Pivot	12"

Cylinder

Barrel O.D.	5 7/8" (63 series) 6 11/16" (74 series)
Stages	3 or 4 stage
Stroke	110", 124", 135"

Package Sizes

Body Length	Hoist Model	Side Height	Front Height	Rear Height	Capacity (Cu. Yd.)
13	VTW - 63110	42	48	48	11/13
13.5	VTW - 63110	42	48	48	12/14
14	VTW - 63110	42	48	48	12/14
15	VTW - 63124	42	48	48	13/15
16	VTW - 74135	42	48	48	14/16
16	VTW - 74135	48	56	56	16/19

Additional Options

Cabshield:	1/4 - 19", 3/4 - 36", 1/2 - 24" or full - 43"
Boards:	2' x 6" wood, Structural tubing
Spreader Apron:	8" Weld-on
Paint:	Custom Paint



Heavy Duty Package Dump Body

Warren 451 Series dump bodies are designed for mounting on medium duty single axle truck chassis. They have strong “Stacked Type” understructure for extended life. Engineered for contractors and governmental agencies for hauling sand, gravel, asphalt mix and other materials. Double acting, air operated tailgate with underbody arm or telescopic hoist.



Figure: U-10 with underbody hoist and optional Cabshield, TARP system & Custom Paint.

Features & Benefits of Warren 451 Series

- ASTM A1011 A-45 High Tensile Steel
- Body & NTEA rated hoist manufactured by Warren
- Continuous welding throughout body for additional strength
- Available in 10ft length
- Full depth rear corner post with full depth rear crossmember
- “Stacked Type” understructure





Series 451 Specifications

Body

<i>Construction:</i>	<ul style="list-style-type: none"> • ASTM A1011-45 High Tensile Steel • <i>Dimensions:</i> <ul style="list-style-type: none"> - Length - 10 ft - Outside width - 8 ft - Inside width- 7ft 3 In • <i>Capacity:</i> <ul style="list-style-type: none"> F10-451 - 6/7cu. & 7/8 cu. U10-451 - 5/6cu.
<i>Understructure:</i>	<ul style="list-style-type: none"> • 3"- 4.1#/ft. channel crossmembers • 5"- 9.0#/ft. channel longitudinals for U10-451 • 5"- 6.7#/ft. channel longitudinals for F10-451
<i>Floor:</i>	3/16" high tensile steel w/ 2" side to floor radius
<i>Sides:</i>	<ul style="list-style-type: none"> • 10 GA steel w/4" x 4" x 1/8" boxed tube top rail • 6" wide boxed vertical side braces (3 per side) • 6" high front & rear board pockets • 8" full depth rear corner posts & skirt • 8" wrap around front corner post • Full depth dirt shedding rub rails
<i>Front Bulkhead:</i>	<ul style="list-style-type: none"> • 10 GA steel w/ die-formed horizontal braces • Dog house w/ access door
<i>Tailgate:</i>	<ul style="list-style-type: none"> • 10 GA vertical type - 6" higher than sides • Boxed perimeter w/vertical braces • Offset flame cut steel plate upper hinge; Double lower sockets w/ overhooks • Air operated gate latch • Double Acting Standard



Additional Options

<i>Cabshield:</i>	¼ - 19", ¾ - 36", ½ - 24" or full - 43"
<i>Spreader Apron:</i>	8" weld-on, 12" weld-on or 8" Push Apron
<i>Double Acting Hoist:</i>	U10-451
<i>Special gate:</i>	Material gate (Coal door)

Hoist

<i>Body Model</i>	U10-451	F10-451
<i>Type</i>	Underbody Lift Arm	Telescope Head
<i>Model</i>	U50-723	T10-5383
<i>Pivot Pin</i>	1 ¼" dia.	1 ¼" dia.
<i>Mounting height</i>	13"	13"
<i>Pivot</i>	12"	12"

Cylinder

<i>Barrel O.D.</i>	7 1/2"	5 1/8"
<i>Stage</i>	1 stage	3 stage
<i>Stroke</i>	23"	85"



WAR (Demolition) Dump Body

Warren's WAR Series demolition dump bodies are engineered to perform well in severe environments due to their rugged design, durability and varied applications. The Hardox® 450 construction allows this body to survive in the toughest of conditions. They are extreme duty dump bodies designed to haul C&D (construction and demolition waste), rip rap, or other products that are tough and abrasive. Warren WAR-Series dump bodies are verified by SSAB's Hardox® In My Body program.



Figure: Shown with optional High lift Tailgate, aluminum fender covers & TARP system.



Features & Benefits of Warren WAR Series

- Hardox® 450 construction to hold up in demolition environments
- Body & NTEA rated hoist manufactured by Warren
- Continuous welding for additional strength
- Available in 14'-20' lengths
- Full depth rear corner post with full depth rear crossmember



WAR Series Specifications



Figure: Shown with optional High lift Tailgate, aluminum fender covers, TARP system & D/S WAR Steps .

Body

Construction:	Continuously welded unibody design
Understructure:	<ul style="list-style-type: none"> 8" I-beam @ 13.0 #/ft. long rails No crossmembers
Floor:	<ul style="list-style-type: none"> 1/4" AR450 24" side to floor radius 45 degree brace around doghouse
Sides:	<ul style="list-style-type: none"> 1/4" AR450 4" x 4" x 1/4" structural tubing top rails 10" full depth rear corner post and rear skirt
Front Bulkhead:	1/4" AR450
Tailgate:	<ul style="list-style-type: none"> 1/4" AR450 One panel [picture frame style] Flush mounted steel tailgate hardware with 1-1/4" hinges & pins
Lights:	1 ea. stop, tail & turn light in each corner post

Additional Options

- High lift Tailgate - Yields 26" of clearance b/w top of side rails & tailgate
- 3/16" AR450 body/floor/ tailgate
- 1/4; 1/2; Full Cab Shield
- Material door in tailgate
- Spreader Apron
- Top rails rotated 45 degrees for dirt shedding

Hoists

<i>Model</i>	<i>Class</i>	<i>Capacity (Tons)</i>	<i>Recommended Truck CT</i>
VTLW-63110	100	13' – 41.1 ; 14' – 37.8	13' – 96" ; 14' – 108"
VTLW-63124	110	15' – 37.9 ; 16' – 34.5	15' – 120" ; 16' – 132"
VTLW-74135	120	17' – 36.4 ; 18' – 36.4	17' – 144" ; 18' – 156"



Light Weight Steel Dump Body

Warren's WS-700 is a lightweight steel dump body designed for hauling aggregate, sand, or asphalt. This body is constructed for the contractor who wants to carry the maximum legal payload. The WS-700 utilizes ASTM A1011 A-45 high tensile steel in a unibody design to provide a clean, tough, lightweight body. The crossmember-less design eliminates material buildup and makes for easy cleanup and maintenance.



Figure: Shown with optional metal boards w/ aluminum covers, aluminum fender covers, and TARP.



Features & Benefits of Warren WS-700 Series

- 10 GA high tensile steel sides, front, & gate w/ AR450 floor
- Body & NTEA rated hoist manufactured by Warren
- Continuous welding throughout body for additional strength
- Crossmemberless – no dirt buildup in crossmembers
- Full depth rear corner post and rear skirt



WS-700 Specifications



Figure: Shown with optional metal boards, tarp system, lights in rear crossmember, and tow package.

Body

Construction:	Continuously welded unibody design
Understructure:	<ul style="list-style-type: none"> • 8" I-beam @ 13.0 #/ft. long rails • No crossmembers
Floor:	<ul style="list-style-type: none"> • 3/16" AR450 • 20" side to floor radius • 45 degree brace around doghouse
Sides:	<ul style="list-style-type: none"> • 10 GA High Tensile Steel • 4" x 4" x 1/8" structural tubing top rails • 10" full depth rear corner post and rear skirt
Front Bulkhead:	<ul style="list-style-type: none"> • 10 GA steel w/ die-formed horizontal braces • Dog house w/ access door
Tailgate:	<ul style="list-style-type: none"> • 10 GA High Tensile Steel • Boxed Perimeter w/ horizontal braces • Offset flame cut steel plate upper hinge; Double lower sockets w/ overhooks • Air operated gate latch

Additional Options

- TARP System
- High Lift Gate
- ¼; ½; Full Cab Shield
- 12" Sloped end
- Spreader Apron
- Custom Paint
- LED Lights

Hoists

<i>Model</i>	<i>Class</i>	<i>Capacity (Tons)</i>	<i>Recommended Truck CT</i>
VTLW-63101	100	12' - 41.1	84" - 96"
VTLW-63110	100	13' - 41.1 ; 14' - 37.8	13' - 96" ; 14' - 108"
VTLW-63124	110	15' - 37.9 ; 16' - 34.5	15' - 120" ; 16' - 132"
VTLW-74135	120	17' - 36.4 ; 18' - 36.4	17' - 144" ; 18' - 156"



Crossmemberless Severe Heavy Duty Body

The Warren WXL series dump bodies are designed for mounting on single and heavy-duty tandem axle chassis. These units are engineered for both users as well as governmental agencies that require a strong unit that will hold up under extreme conditions.



Figure: Shown with vertical side braces, optional high lift tailgate, and upgraded metallic paint

Features & Benefits of Warren WXL Bodies

- 304 stainless steel or AR-450 construction
- Body & NTEA rated hoist manufactured by Warren
- Continuous welding throughout body for additional strength
- Crossmemberless – no dirt buildup in crossmembers
- Full depth rear corner post and rear skirt





WXL Series Specifications

Body

Construction:	<ul style="list-style-type: none"> Continuously welded unibody design Dimensions: <ul style="list-style-type: none"> Length - 10ft to 20ft Outside width - 8ft Inside width - 7ft 3 In
Understructure:	<ul style="list-style-type: none"> No Crossmembers 8" I-beam @13.0#/ft longitudinals (VTLW hoist) 10" I-beam @15.0#/ft longitudinals (U60-823 hoist) 10" Steel tubing longitudinals (U110-8824 hoist)
Floor:	3/16" AR-450 (one piece floor)
Sides:	<ul style="list-style-type: none"> 10 GA steel w/4" x 4" x 1/8" boxed tube top rail 45 degree knee brace floor/side & dirt shedder lower outer rail 10" wrap around front corner post 10" full depth rear corner post & rear skirt
Front Bulkhead:	10 gauge ASTM A1011 A-45
Tailgate:	<ul style="list-style-type: none"> 10 gauge ASTM A1011 - 45 2 panel horizontal braced



Figure: 14' WXL body and E/AC Spreader in 304 SS

Additional Options

- Upgrade entire body to AR-450
- Upgrade entire body to 304 Stainless Steel

Body Length	Hoist Model	Side Height	Front Height	Rear Height	Capacity Cu. Yds.
10'	U50-723 / T10-5383	24"/32"	38"	38"	6.7/8.5 - 7.4/9.4
14'	VTLW-63110 / U110-8824	42"	52"	50"	13.1/15.7
15'	VTLW-63124/74135	42"	52"	50"	14.1/16.8
16'	VTLW-63124/74135	48"	56"	56"	17.2/20.1
17'	VTLW-74135	48"	56"	56"	18.3/21.3
18'	VTLW-74135	48"	56"	56"	19.3/22.6

Hoist Model	Capacity (Tons)	Class	Recommended truck CT / CA
U60-823 / T10-5383	10' - 20.6 ; 11' - 18.3	60	10' - 84" ; 11' - 96"
U110-8824	14' - 39.6	110	14' - 108"
VTLW-63110	14' - 37.8	100	14' - 108"
VTLW-63124	15' - 37.9 ; 16' - 34.5	120	15' - 120" ; 16' - 132"
VTLW-74135	17' - 36.4 ; 18' - 34.6	120	17' - 144" ; 18' - 156"

Hydraulic Tailgate Spreader

Hydraulic tailgate spreader for use with abrasives and/or chemicals for ice and dust control.



Model AC-620A-SS
Shown with polyurethane
spinner disc.

The Warren Model AC-620A-SS Spreader is designed for mounting on a standard dump body in such a manner that when not in use material may be dumped over or under the tailgate.

304 stainless steel
twin polyurethane
disc construction.



AC-620A Design Features

General:

The unit is of the under tailgate type. The unit consist of a 304 stainless steel 7 gauge 304 stainless steel hopper trough, 1/4" 304 stainless steel endplates and all bolts, pins and fasteners to be high quality 304 stainless steel. Is capable of spreading uniformly sand, salt, cinders, calcium chloride or mixtures up to a width of 30 feet. The spreader shall not interfere in any manner with the normal operation and usage of the dump body tailgate or pintle hook.

Body Construction:

7 gauge 304 stainless steel formed auger trough continuously welded to 1/4" thick 304 stainless end panels. The rear side trough hinges down for cleaning and removal of foreign material. The door is full length of the auger with 5-hinge points and dual over center latches at each end of door, a 7 gauge 304 stainless steel hinged cover plate to be provided so that material may be dumped over spreader when plate is down. When plate is up it will permit dumping of material in auger trough. An easily removable cover plate located at discharge end of trough to restrict material free flow through opening. The mounting is of the "Quick Mount" type utilizing channel body brackets with slide bars and lock pins. "Quick Mount" stabilizer braces are provided. Body corner fill plates to control material flow from dump body to spreader and eliminate spillage out corners when dump body tailgate is open are provided; 96" OVERALL LENGTH.

Conveyor:

Conveyor is 6" diameter bi-directional auger, full pitch with a minimum of 3/8" helicoid flighting welded to 2" pipe. Discharge end has reverse flighting for at least 18" from left end, to provide a more even and controlled flow of material to spinner. Auger shafts 1 1/4" diameter and mounted in sealed ball bearings by a two bolt flange to be at each end. Auger is direct driven by an orbital type low speed high torque hydraulic motor located at right curb end of auger, directly coupled to auger pipe. Discharge opening is 18" from end of auger trough.

Distributor Spinner Assembly:

Distributor disc is 18" in diameter and equipped with 6 replaceable formed fins. Disc is Polyurethane with integral steel hub and mounted directly to hydraulic motor shaft. The hydraulic motor is of the orbital type and mounted to a laterally adjustable bracket which permits an infinite positioning of the spinner to adjust material spread pattern. Spinner shall rotate clockwise and a curved baffle is located forward of spinner to protect truck from material being spread. An adjustable stabilizer bar with mounting bracket is provided to maintain spinner in a level position at all dump body dumping angles.

Power Drive & Controls:

To be dual hydraulics having separate hydraulic motors to power auger conveyor and spinner. All hydraulic hose and fittings to make installation is provided and is of adequate rated capacity to meet system requirements.

Paint Color:

Body is properly cleaned with hi-pressure hot phosphate cleaner, 2 coats of primer sealer with finish lead freed enamel black on non stainless steel parts.



OPTIONS:

- Twin Spinners on AC-620A-2 model with polyurethane spinner disc
- Steel Construction on AC-620A

Hydraulic Under Tailgate Cross Conveyor Spreader



AC-1820

The Warren model AC-1820 Cross Conveyor is a hydraulic tailgate conveyor and is mounted to the rear of the dump body, below the floor level and beneath the tailgate. During the maintenance operations it permits the dumping of materials to the left or right without interfering with the operation of the tailgate. The conveyor is capable of being controlled by the truck hydraulic system to vary the amount of material being conveyed to the roadway surface.



AC-1820 Design Features



Body:	ASTM-A570 hi-tensile 7 gauge front & rear panels integral with the sills 1/4" ASTM-A572 Endplates
Capacity:	200 T.P.H. minimum
Overall Width:	103"
Length:	43"
Height:	27"
Discharge:	Right or left
Belt Conveyor:	18" belt over chain D667X , 96" wide riveted, with 3/8"x1-1/4"crossbars, H. D. hot asphalt type to withstand heat of 350 degrees fahrenheit. Reversible with hydraulic hoses, discharge gates are rack & pinion; left and right sides. Feedgate openings 16-1/4"x13" minimum. 6 tooth drive and idler sprockets flame cut steel plate, keyed and timed with 1-1/2" shafts. 1/4" wiper belting seals off front and rear end panels to conveyor.
Mounting:	Pin mount type using four pins for quick disconnect.
Paint:	Body is cleaned with hi-pressure hot phosphate cleaner, one coat of prime and finish with lead free Safety Orange.
Optional Attachments:	Spinner attachment for spreading Hydraulic Components <ul style="list-style-type: none">- Hydraulic Reservoir & Filter- Hydraulic Quick Couplers- Hydraulic Hoses & Fittings On Truck & Spreader- Hydraulic Control Valve- Hydraulic Pump Direct Mount Type



WARREN

AC-2420A

Heavy Duty Hydraulic “Custom” Spreader

Heavy duty all hydraulically powered abrasive and/or chemical spreader for ice control, dust control, and seal coating.



Stainless Steel w/ optional splash guard & rubber skirting.



Tubular Storage Leg System

The Warren Model AC-2420A can be either dump body or truck chassis mounted with a choice of either truck or auxiliary engine power. Heavy duty hydraulic components are mated to a heavy gauge ASTM-A1011-A45 high tensile steel hopper body (standard) for longer equipment life. {Picture shown is optional 304 Stainless Steel}

Features & Benefits

- ASTM A1011 A-45 High Tensile Steel
- Heavy duty 6:1 reduction spur type gearbox
- Eight tooth sprocket mounted to 2" drive shaft
- Tilt-up spinner assembly for convenient storage
- 22" spinner with six replaceable fins mounted directly to motor
- Standard vertically adjustable spinner assembly to fit different vehicles
- Replaceable bolt-in chain shields in corrosion susceptible area
- Heavy 3/16" x 1-1/2" x 3" tube cross sills



Series AC-2420A Specifications

The Warren Model AC-2420A is a heavy duty hydraulically powered spreader designed to spread abrasives, chemicals, or mixtures of both for ice control, dust control, and abrasives for seal coating. Ideal for the operator looking for a long life economical unit rather than initial cost.

Body Construction: All electrically welded in jigs and fixtures for accurate fit and alignment. 10 Gauge ASTM-A1011-A45 high tensile steel sides continuously welded to 3/16" high tensile steel sills which have integrally formed full length conveyor chain shields supports. Sides and 10 Gauge. Steel end gates have inverted "J" formed top edge for extra strength and stiffness without corrosion pockets. 10 Gauge High tensile steel side supports sloped at 45 degree angle tied to each 3/16" x 1-1/2" x 3" tubular cross sills. "Tapered-in" front and rear end gates for better material seal and reduced power requirement. 3/16" steel conveyor bottom panel with rear belt wiper. Four corner brace lifting eyes.

Conveyor: Overall width 24" -- conveying width 18" with a 12" x 18" maximum feedgate opening. All steel heat treated pintle type conveyor chain with 7/16" hardened pins and 2 1/4" pitch. 3/8" x 1-1/4" cross bars are welded to every other link. Eight tooth steel sprockets mounted to 1- 1/2" diameter idler shaft and 2" diameter drive shaft. 4" chain idler adjustment with anti-friction bearings. Rear belt type sprocket sealers and "bolt-in" conveyor chain shields. Hand crank type feedgate control.

Conveyor Drive: Heavy duty 6:1 reduction spur gearbox with 2" diameter drive shaft mounted in two four bolt flange type sealed ball bearings. Gearbox housing of aluminum alloy with single "bolt" torque bracket mount for easy cleaning and maintenance. Low speed high torque hydraulic motor is integrally mounted to conveyor gearbox.

Distributor Spinner Assembly: A single 22" diameter spinner with six formed replaceable fins is mounted to 1-1/4" diameter spinner shaft in exterior mounted sealed ball bearing and driven by overhead mounted high torque low speed hydraulic motor. 10 Gauge ASTM-A1011-A45 steel enclosed vertically adjustable hopper assembly with four rod adjustable external baffles and two adjustable internal chute baffles. The tilt up spinner assembly is standard.

OPTIONAL ATTACHMENTS:

Screens Over Hopper	Chain Oiler	22" Polyurethane Spinner
Inverted 'V' Shield Over Conveyor	Spring Loaded Idler Assy	201 & 304 Stainless Steel Tailgate
"Fold Up" Ladder	Stop Tail Turn, 7" Diameter Red	Latch Bar
Cast Iron Keyed Conveyor Sprockets	Warning & Backup Lights	Rear Conveyor Adjuster
Tubular Storage Leg System	Light Box	Extended Idler Grease Fittings
Catwalks for Chassis Mount	Dump Body Mounting Kit	Rubber Shields for Sides, Front & Rear
		Splash Guards Front & Rear

Specifications:

Inside Hopper Length	8'	9'	10'	11'	12'	13'	14'	15'	16'
Capacity (struck cu. Yds.)	5.0	5.6	6.2	6.8	7.5	8.1	8.7	9.3	10.0
Capacity (rounded cu. Yds.)	6.0	6.6	7.3	8.0	8.7	9.4	10.2	10.8	11.6
Weight (lbs.)	1900	2040	2150	2290	2535	2695	2845	3095	3295



Heavy Duty Hydraulic Spreader

All hydraulic powered hopper type abrasive and/or chemical spreader for seal coating, ice and dust control.



Tubular Storage Leg System



Tilt up spinner assembly



6:1 reduction gearbox



The Warren Model E/AC-2420A Spreader is designed to meet all Heavy Duty Spreader requirements. It can be chassis or dump body mounted with a selection of hydraulic pump power sources. Its unique uni-hopper construction eliminates many corrosion pockets for longer spreader life. Heavy duty hydraulic components are mated to a heavy gauge ASTM-A1011-A45 High Tensile Steel hopper body for longer equipment life. {Shown is the E/AC-2420A-Stainless Steel}

Features & Benefits of Warren E/AC-2420A Package Spreaders

- ASTM-A1011-A45 High Tensile steel hopper body for longer equipment life.
- Heavy duty 6:1 reduction spur type gearbox. Low speed, high torque hydraulic motor directly coupled to gearbox.
- Eight tooth sprocket mounted to 2" drive shaft.
- One piece side/sill that resists corrosion pockets.
- 18" spinner with six replaceable fins mounted directly to motor.
- Three externally adjustable and two internally adjustable baffles.
- Tilt up spinner assembly for convenient storage.
- Integral chain shields formed into side sheet.



E/AC-2420A Design Features

The Warren Model E/AC-2420A is a hopper type spreader designed for hard use at a modest investment. It will spread abrasives and/or chemicals for ice or dust control and abrasives for seal coating.

Body Construction: All electric welded uni-hopper—10 ga. ASTM-A1011-A45 high tensile steel sides/sills formed from one steel sheet so there are no seams in spreader sides to cause corrosion pockets. Chain shields are formed into side/sill providing additional longitudinal rigidity and protects chain from material in hopper. Top edge of sides and ends are inverted "J" formed for improved hopper strength and ease of maintenance. Full slope 10 gauge ASTM-A1011-A45 high tensile steel side supports are located at each 12" x 2" steel bar cross sill and hold sides at a 45° angle. Both ends are tapered-in for better material seal and reduced conveyor load. 3/16" ASTM-A1011-A45 high tensile bolt in steel conveyor bottom of flanged edge design has rear belt type bar wiper.

Conveyor: Overall width 24"—conveying width 18" with a 12" x 18" maximum feedgate opening. All steel heat treated pintle type conveyor chain with 3/8" x 1-1/4" cross bars welded to every other link. Eight tooth steel sprockets mounted to 1-1/2" dia. idler and 2" dia. drive shaft. 4" chain idler adjustment with anti-friction bearings. Belt type sprocket sealers, hand crank type feedgate control.

Conveyor Drive: Heavy duty 6:1 reduction worm type gearbox with 2" dia. drive shaft, mounted in two 4 bolt flange type sealed ball bearings. Gearbox housing of aluminum alloy with single "bolt" torque bracket mount for easy cleaning and maintenance. All bearings anti-friction type sealed running in oil. Flange type four bolt mounting. Low speed high torque hydraulic motor directly coupled to gear box.

Distributor Spinner Assembly: A single 18" dia. spinner with 6 replaceable formed fins is directly mounted to the low speed high torque hydraulic motor mounted beneath disc. Enclosed hopper designed for either dump body or chassis mount. All 10 ga. steel with one fixed and 3 rod adjustable external baffles and 2 adjustable internal baffles.

Power Drive: Dual hydraulics having two (2) hydraulic motors - one to power the spinner and one the conveyor. Hydraulic motors to be of the low speed hi-torque roller stator type having minimum manufacturer's torque ratings of 787-inch pounds for spinner and 2880-inch pounds for the conveyor. the spinner hydraulic motor to be mounted below the spinner disc. Conveyor motor is integrally mounted to conveyor gear box.

Paint: Hi pressure hot phosphate cleaner, 2 coats lead free primer, finish coat safety orange.

OPTIONAL ATTACHMENTS:

Screens Over Hopper	Chain Oiler	18" Polyurethane Spinner
Inverted 'V' Shield Over Conveyor	Spring Loaded Idler Assy	Rear Conveyor Adjuster
"Fold Up" Ladder	Stop Tail Turn, Backup Lights &	201 & 304 Stainless Steel
Cast Iron Keyed Conveyor Sprockets	7" Diameter Red Warning	Tailgate Latch Bar
Tubular Storage Leg system	Light Box	Extended Idler Grease Fittings
Catwalks for Chassis Mount	Dump Body & Chasis Mounting Kit	Rubber Shields for Side, Front & Rear
		Splash Guards Front & Rear

Specifications:

Inside Hopper Length	8'	9'	10'	11'	12'	13'	14'	15'
Cap. - Struck - Cu. Yds.	5.0	5.6	6.3	6.9	7.6	8.2	8.9	9.6
Cap. - Rounded- Cu. Yds.	6.0	6.7	7.4	8.0	8.8	9.5	10.3	11.1
Spreader Weight - lb. Basic Unit	1726	1866	1966	2106	2206	2346	2450	2590

Spreader height above mounting surface—52"

Spreader inside width—82"



WARREN

LF-2420A

All Hydraulic Heavy Duty Spreader

Hydraulically powered spreader for distributing granulated fertilizer, AG lime, and other free flowing material.



The Warren LF-2420A is available in stainless steel or high tensile steel.





LF-2420A Design Features

Body Construction:

Electrically welded & available in 201 stainless, 304 stainless, or high tensile steel. Tapered front & rear panels for better material seal. Bolt on catwalks.

Conveyor:

Conveyor width 24". Gate opening 18", with a 12"x18" maximum gate opening. Options include a chain #3 pintle bar every link, stainless steel mesh, or belt over chain.

Conveyor Drive:

Heavy duty hydraulic dual drive gearbox. Bolt on flange type, greasable ball bearings. 35 gallon hydraulic reservoir.

Spinner Assembly:

Two 24" diameter spinners are driven by hydraulic motors, adjustable spinner speed. Adjustable material flow divider for spread pattern adjustments. Replaceable fins on each spinner.

Options:

- Inverted V
- Tarp
- Variable Rate Control
- Light Kit
- Available in 10' to 16' lengths

Distributed by:

WARREN

LF-3020A High Capacity Heavy Duty Spreader

Hydraulically powered spreader for distributing AG lime, granulated fertilizer, & other free flowing material.



The Warren LF-3020A is available in stainless steel or high tensile steel.



LF-3020A Design Features

Body Construction:

Electrically welded & available in 201 stainless, 304 stainless or high tensile steel. Tapered front & rear panels for better material seal. Bolt on catwalks.

Conveyor:

Conveyor width 30". Gate opening 24" with a 12"x24" maximum gate opening. Options include a chain #3 pintle bar every link, stainless steel mesh, or belt over chain.

Conveyor Drive:

Heavy duty hydraulic dual drive gearbox. Bolt on flange type, greasable ball bearing. 35 gallon hydraulic reservoir.

Spinner Assembly:

Two 24" diameter spinners are driven by hydraulic motors, adjustable spinner speed. Adjustable material flow divider for spread pattern adjustment. Replaceable fins on each spinner.

Options:

- Inverted V
- Tarp
- Variable Rate Control
- Light Kit
- Available in 10' to 16' lengths

Distributed by:

WARREN

LS-3420 Hydraulic Litter/Lime Spreader Body

Hydraulically powered spreader for distributing bulky material such as chicken litter, sawdust, rice hulls & lime.



The Warren LS-3420 spreader incorporates a simple hydraulic system with a large capacity steel hopper body.





LS-3420 Design Features

Body Construction:

Electrically welded 10 gauge steel sides and sills form the hopper side in one piece with no horizontal seam. Tapered front and rear panels for better material seal and reduced start up torque. 3/16" steel conveyor bottom with polymer liner. 12 gauge skid resistant catwalks serve as fenders with mud flaps.

Conveyor Drive:

Heavy duty hydraulic dual motor drive gearbox. Bolt on flange type, greasable ball bearings. 35 gallon hydraulic reservoir.

Conveyor:

Conveying width 34". 12"x34" gate with a hand crank. 667 XH Pintle conveyor chain standard. 1 3/8" bar on every fourth link. 2" drive shaft. 4" chain idler adjustment with anti-friction bearing. Hydraulic Spinners on-off Control. Variable Conveyor Speed Control.

Distributor Spinner Assembly:

Two 30" diameter spinners. Four specially formed adjustable and replaceable fins on each spinner disk.

Spreader Length	14'	16'	18'	20'	22'	24'
Cab to Axle	102"	115"	120"	132"	156"	180"
Capacity (cu. Yds.)	11.3	12.9	14.6	16.2	17.8	19.4
Weight (lbs.)	2850	3155	3460	3765	4070	4375

Options:

- Shaving Broadcaster
- Inverted V
- Electric Tarp
- Hydraulic Gate
- Variable Rate Control
- 88K Pintle chain with a bar every other link
- Light Kit

Distributed by:

WARREN

LST-3420 Heavy Duty Hydraulic Pull Type Spreader

Hydraulically powered spreader for distributing bulky material such as chicken litter, sawdust, rice hulls & lime.



The Warren LST-3420 spreader incorporates a heavy duty hydraulic system with a large capacity high tensile steel hopper body to provide extended product life.



LST-3420 Design Features

Body Construction:

Electrically welded 10 gauge steel sides and sills form the hopper side in one piece with no horizontal seam. Tapered front and rear panels for better material seal and reduced start up torque. 3/16" steel conveyor bottom with polymer liner. 12 gauge skid resistant catwalks serve as fenders with mud flaps.

Conveyor:

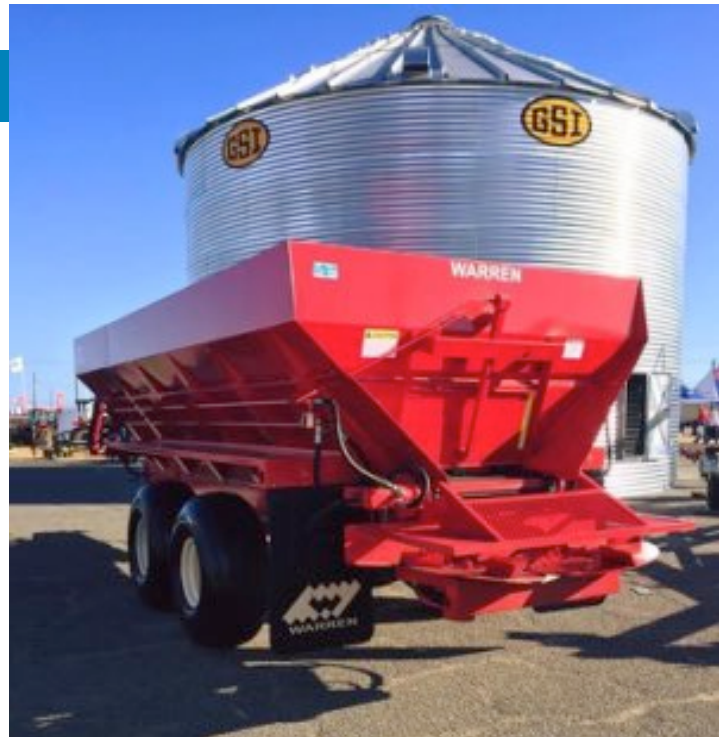
Conveying width 34". 12"x34" gate with a hand crank. 667 XH Pintle conveyor chain standard. 1 3/8" bar on every fourth link. 2" drive shaft. 4" chain idler adjustment with anti-friction bearing.

Conveyor Drive:

Heavy duty hydraulic dual motor drive gearbox. Bolt on flange type, greasable ball bearings. 35 gallon hydraulic reservoir.

Distributor Spinner Assembly:

Two 30" diameter spinners. Four specially formed adjustable and replaceable fins on each spinner disk. Spinners on-off control valve. Variable Rate Controller



Running Gear:

Walking beam suspension. 16.5Lx16.1 Floatation Tires on 14' - 18' spreaders and 21.5Lx16.1 Floatation Tires on 20' - 24' spreaders. 8" Structural Channel frame rails. Primed and painted with PPG automotive paint.

Spreader Length	14'	16'	18'	20'	22'	24'
Capacity (cu. Yds.)	11.3	12.9	14.6	16.2	17.8	19.4



Pictured is all Stainless Steel LST Spreader

Options:

- Hydraulic Gate Opener
- All Stainless Steel Construction
- Inverted V
- Tarp
- Shaving Broadcaster
- Light Kit

Distributed by:

WARREN

WFT-2010 Series

AccuMaxx Pull Type Lime & Fertilizer Spreaders

Maximize your spread pattern with a Warren AccuMaxx spreader. Uniquely shaped spinner discs and deflectors work together to provide an accurate and controlled even spread. Uniform fertilizer placement up to 90' and lime up to 75'.



The Warren WFT AccuMaxx line comes standard with a 3 speed ground wheel drive gearbox and hydraulic spinners. 6-Ton AccuMaxx pictured above.



WFT-2010 Series Specifications



6 Ton AccuMaxx with Optional Stainless Steel Mesh Chain

Construction:

- 12 Gauge Stainless Steel Construction
- Welded in bed type jigs and fixtures for accurate fit & alignment
- Standard Duty Chassis: 5" x 2" Tubing

3 Ton:

- Single 6 ton axle design with 16.5L x 16.1 flotation tires
- 96" length x 72 3/4" wide x 36" tall
- Ground to Side Height: 74 1/2"
- Ground to Peak Height: 79"
- 97.5 Cubic Feet

6 Ton:

- Single axle design with 19L x 16.1 flotation tires
- 120" length x 84" wide x 45" tall
- Ground to Side Height: 84 1/2"
- Ground to Peak Height: 90"
- 180 Cubic Feet

Conveyor:

- Width: 20"
- #3 Pintle (Bar Every Link)
- Conveyor trough lined with UHMW
- Ground wheel driven by 3 speed gear box

Spinner Assembly

- 22.5" dished stainless steel spinners
- Dual hydraulic spinner motors
- Spinner speed controlled by hydraulic valve
- Tractor requires a hydraulic pump with 15GPM minimum @ 2,200 PSI

Options:

- Full Hydraulic Controls
- High Crop Model
- Various Tire Options Available
- Raven or TeeJet Controllers
- Tarps
- Lights
- Stainless Steel Mesh Chain



Distributed by:



ATTACHMENT C - PRICING

DEFINITIONS:
Equipment: includes the component(s) the bidder provides to install on chassis (provided by others).
Equipped Truck (Turn-key): includes the component(s) and chassis provided by the bidder as a fully functional operating unit for the task(s) it is intended to achieve.
Body: Relates to any item being purchased such as a dump box, plow, running boards, trailer, etc.

ADMINISTRATIVE FEES: Please refer to **Attachment A -NASPO ValuePoint Master Agreement Terms and Conditions section 6**, and **Attachment D section 2**.

ROADWAY EQUIPMENT			PRICING											
CATEGORY	EQUIPMENT	Equipment SPEC	Equipment Cost				Installation		Delivery Cost		MFG TOTAL COST	Warranty Duration	Warranty Notes	Description
			Chassis	Body/part MSRP	% Discount	Discounted Cost	MFG Cost	Hourly Rate	Point of Origin	Cost per mile				NOTES
Bodies - Dump and Service	5 yard Dump Body mounted to Truck - STEEL	Base no options	NA	\$ 14,580	12%	\$ 12,830.40	\$ 4,060	\$ 125.00	COLLINS, MS	\$ 3.50	\$ 16,890	12 MONTHS	Warranty details will be provided with all orders	U-10 SERIES
	5 yard Dump Body mounted to Truck - ALUMINUM	Base no options	NA	\$ 24,000	12%	\$ 21,120.00	\$ 4,060	\$ 125.00	COLLINS, MS	\$ 3.50	\$ 25,180	12MONTHS	Warranty details will be provided with all orders	WTA-10
	5 yard Dump Body mounted to Truck - STAINLESS STEEL	Base no options	NA	\$ 23,500	12%	\$ 20,680.00	\$ 4,060	\$ 125.00	COLLINS, MS	\$ 3.50	\$ 24,740	12MONTHS	Warranty details will be provided with all orders	U-10 SERIES Stainless Steel
OTHER	13 yard Dump Body mounted to Truck	Base no options	NA	\$ 16,850	12%	\$ 14,828.00	\$ 4,610	\$ 125.00	COLLINS, MS	\$ 3.50	\$ 19,438	12 MONTHS	Warranty details will be provided with all orders	F- SERIES
		Base no options	NA	\$ 28,100	12%	\$ 24,728.00	\$ 4,610	\$ 125.00	COLLINS, MS	\$ 3.50	\$ 29,338	12MONTHS	Warranty details will be provided with all orders	F- SERIES Stainless Steel
	16/19 yard Dump Body mounted to Truck	Base no options	NA	\$ 23,500	12%	\$ 20,680.00	\$ 6,575	\$ 125.00	COLLINS, MS	\$ 3.50	\$ 27,255	12MONTHS	Warranty details will be provided with all orders	WAR/WXL SERIES AR-500
SNOW & ICE EQUIPMENT			PRICING											
CATEGORY	EQUIPMENT	Equipment SPEC	Equipment Cost				Installation		Delivery Cost		MFG TOTAL COST	Warranty Duration	Warranty Notes	Description
			Chassis	Body/part MSRP	% Discount	Discounted Cost	MFG Cost	Hourly Rate	Point of Origin	Cost per mile				NOTES
Spreaders - Deicing	Salt/Sand spreader mounted to pickup truck with 8' bed	Base no options	NA	\$ 12,450	12%	\$ 10,956.00	\$ 1,000.00	\$ 125.00	COLLINS, MS	\$ 3.50	\$ 11,956	12 MONTHS	Warranty details will be provided with all orders	Pickup Spreader
Spreaders - Deicing	Slide-in salt/sand spreader for 3 yard municipal dump body	Base no options	NA	\$ 13,750	12%	\$ 12,100.00	\$ 1,000.00	\$ 125.00	COLLINS, MS	\$ 3.50	\$ 13,100	12 MONTHS	Warranty details will be provided with all orders	AC/EAC Spreader 8'
	Slide-in salt/sand spreader for 5 yard municipal dump body	Base no options	NA	\$ 21,500	12%	\$ 18,920.00	\$ 1,250.00	\$ 125.00	COLLINS, MS	\$ 3.50	\$ 20,170	12 MONTHS	Warranty details will be provided with all orders	AC/EAC Spreader 10'
	Slide-in salt/sand spreader for 10 yard municipal dump body	Base no options	NA	\$ 24,600	12%	\$ 21,648.00	\$ 1,250.00	\$ 125.00	COLLINS, MS	\$ 3.50	\$ 22,898	12MONTHS	Warranty details will be provided with all orders	AC/EAC Spreader 12'
OTHER	Tailgate Salt/Sand Spreader	Base no options	NA	\$ 4,950	12%	\$ 4,356.00		\$ 125.00	COLLINS, MS	\$ 3.50	\$ 4,356	12 MONTHS	Warranty details will be provided with all orders	AC-620-SS Spreader
	Tailgate Salt/Sand Spreader	Base no options	NA	\$ 7,425	12%	\$ 6,534.00		\$ 125.00	COLLINS, MS	\$ 3.50	\$ 6,534	12MONTHS	Warranty details will be provided with all orders	AC-1820 Spreader
	Tailgate Salt/Sand Spreader	Base no options	NA	\$ 9,550	12%	\$ 8,404.00		\$ 125.00	COLLINS, MS	\$ 3.50	\$ 8,404	12MONTHS	Warranty details will be provided with all orders	AC-1820-SS Spreader
	Tailgate Salt/Sand Spreader - GRAVITY SPREADER	Base no options	NA	\$ 6,750	12%	\$ 5,940.00		\$ 125.00	COLLINS, MS	\$ 3.50	\$ 5,940	12MONTHS	Warranty details will be provided with all orders	GS-84/87 Spreader