

# State of Michigan

FLOORING STANDARDS



# TABLE OF CONTENTS

## SOFT SURFACE

4	Alight Edit
5	Connect Edit
6	Edge Edit
7	Electric Edit
8	Flame Edit
9	Assertive Action
11	Assertive Stria
12	Assertive Rib
13	Applause
15	Colormap
16	Texturemap
17	Geoknit
18	Interchange
19	Maelstrom
20	Plexus Color
23	Substance
24	Tailored Madras
25	Acadia
26	Augustine
27	Dalvay
28	Stratford
29	Thoroughfare
30	Zona III

## RESILIENT

### LVT

31	Arterra
32	Artifice
33	Asphalt
34	Carrera
35	Carrera Accent
36	Concrete
38	Fossil Stone
39	Legacy Stone
41	Metamorphic
42	Modern Stone
43	Parisian
44	Passageway
45	Rocheux
46	Rust Rings
47	Solstice
48	Terrazzo
49	Vestige

50	Antique Wood
56	Exotic Wood
66	Grand Ash
67	Modern Wood
74	NuGrain
75	Spalted
76	Townhall
77	Wildwood
78	Abstracts
80	Stones
82	Woods
85	Wood
86	Stone
87	Abstract

## STAIRWELL MANAGEMENT

88	Anglefit Rubber Stair Treads
93	Vinyl Stair Treads

## WALL BASE

94	Baseworks Thermoset Rubber Wall Base
95	Traditional Wall Base
96	Color Guide
100	Supporting Adhesives
101	Sustainability

**Elyse BERTLING**  
State of Michigan Account Executive

Elyse.bertling@tarkett.com  
248.346.8733

CONTRACT NO. 230000001067





## ALIGHT EDIT 11613

DYNAMIC EDIT



22411 WIND TURBINE



22401  
WAVEFORM



22402  
ARMOR



22403  
POLARITY



22404  
COMMON GROUND



22405  
DIRECT CURRENT



22406  
EARTHING



22407  
LIGHTNING



22408  
DIODE



22409  
HYDROELECTRIC



22410  
HOT CONDUCTOR



22411  
WIND TURBINE



22412  
BALLAST

### Available Size / Installation Method:

24x24: Vertical Ashlar

9x36 & 18x36: Vertical Ashlar, Herringbone

**Sample size:** 24x24

**Yarn type:** Dynex SD

**Dye method:** 100% Solution Dyed

**Pattern match:** Not Applicable

**Modular construction options:** ethos Modular with Omnicat Technology, Flex-Aire Modular Cushion

**Surface texture:** Stratatec Patterned Loop

**Coordinate group:** 4

**\$**





## CONNECT EDIT 11614

DYNAMIC EDIT



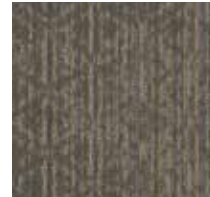
22404 COMMON GROUND



22401  
WAVEFORM



22402  
ARMOR



22403  
POLARITY



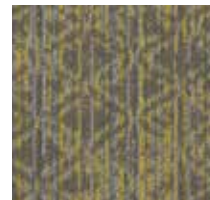
22404  
COMMON GROUND



22405  
DIRECT CURRENT



22406  
EARTHING



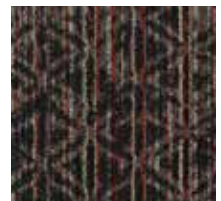
22407  
LIGHTNING



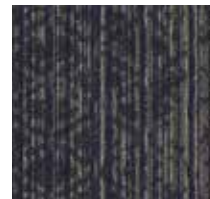
22408  
DIODE



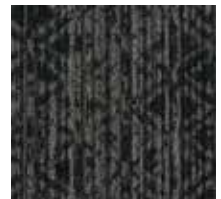
22409  
HYDROELECTRIC



22410  
HOT CONDUCTOR



22411  
WIND TURBINE



22412  
BALLAST

### Available Size / Installation Method:

24x24: Vertical Ashlar

9x36 & 18x36: Herringbone, Vertical Ashlar

**Sample size:** 24x24

**Yarn type:** Dynex SD Nylon

**Dye method:** 100% Solution Dyed

**Pattern match:** Not Applicable

**Modular construction options:** ethos Modular with Omnicoat Technology, Flex-Aire Modular Cushion

**Surface texture:** Stratatec Patterned Loop

**Coordinate group:** 4

**\$**



## EDGE EDIT 11615

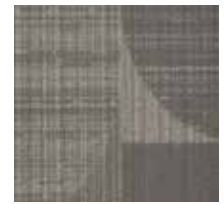
DYNAMIC EDIT



22403 POLARITY



22401  
WAVEFORM



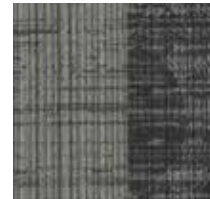
22402  
ARMOR



22403  
POLARITY



22404  
COMMON GROUND



22405  
DIRECT CURRENT



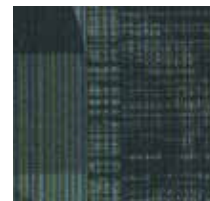
22406  
EARTHING



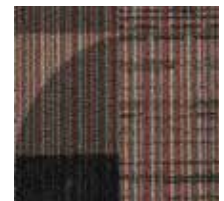
22407  
LIGHTNING



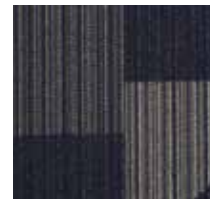
22408  
DIODE



22409  
HYDROELECTRIC



22410  
HOT CONDUCTOR



22411  
WIND TURBINE



22412  
BALLAST

### Available Size / Installation Method:

24x24: Vertical Ashlar

9x36 & 18x36: Herringbone, Vertical Ashlar

Sample size: 24x24

Yarn type: Dynex SD Nylon

Dye method: 100% Solution Dyed

Pattern match: Not Applicable

Modular construction options: ethos Modular with Omnicat Technology, Flex-Aire Modular Cushion

Surface texture: Stratatec Patterned Loop

Coordinate group: 4

\$\$





## ELECTRIC EDIT 11611

DYNAMIC EDIT



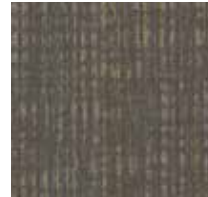
22409 HYDROELECTRIC



22401  
WAVEFORM



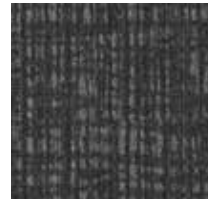
22402  
ARMOR



22403  
POLARITY



22404  
COMMON GROUND



22405  
DIRECT CURRENT



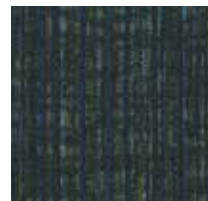
22406  
EARTHING



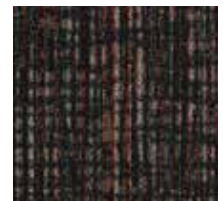
22407  
LIGHTNING



22408  
DIODE



22409  
HYDROELECTRIC



22410  
HOT CONDUCTOR



22411  
WIND TURBINE



22412  
BALLAST

### Available Size / Installation Method:

24x24: Vertical Ashlar

9x36 & 18x36: Herringbone, Vertical Ashlar

Sample size: 24x24

Yarn type: Dynex SD Nylon

Dye method: 100% Solution Dyed

Pattern match: Not Applicable

Modular construction options: ethos Modular with Omnicat Technology, Flex-Aire Modular Cushion

Surface texture: Stratatec Patterned Loop

Coordinate group: 4

\$\$





## FLAME EDIT 11612

DYNAMIC EDIT



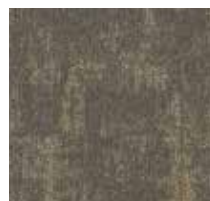
22407 LIGHTNING



22401  
WAVEFORM



22402  
ARMOR



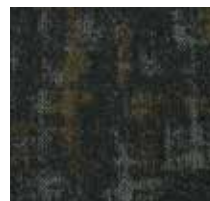
22403  
POLARITY



22404  
COMMON GROUND



22405  
DIRECT CURRENT



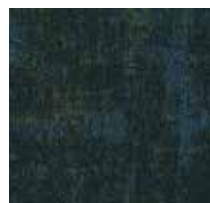
22406  
EARTHING



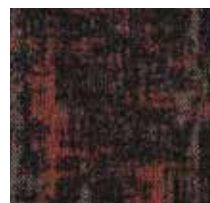
22407  
LIGHTNING



22408  
DIODE



22409  
HYDROELECTRIC



22410  
HOT CONDUCTOR



22411  
WIND TURBINE



22412  
BALLAST

### Available Size / Installation Method:

24x24: Vertical Ashlar

9x36 & 18x36: Herringbone, Vertical Ashlar

**Sample size:** 24x24

**Yarn type:** Dynex SD Nylon

**Dye method:** 100% Solution Dyed

**Pattern match:** Not Applicable

**Modular construction options:** ethos Modular with Omnicoat Technology, Flex-Aire Modular Cushion

**Surface texture:** Stratatec Patterned Loop

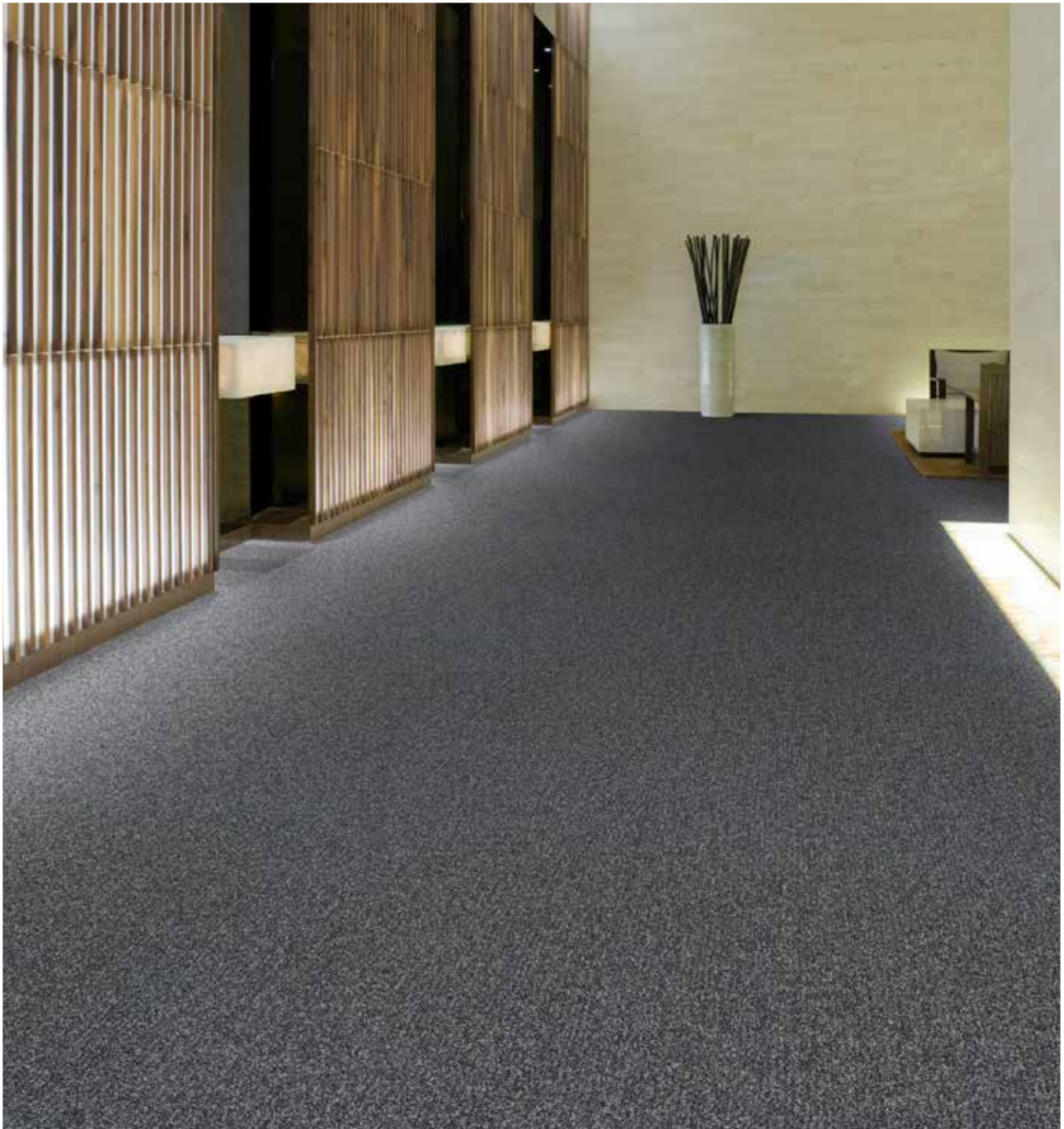
**Coordinate group:** 4

\$\$



## ASSERTIVE ACTION 04837

WALK OFF SYSTEM | ASSERTIVE SERIES



26201 CHROMIUM

**Available Size / Installation Method:**

24x24: Vertical Ashlar

9x36, 18x36: Herringbone, Vertical Ashlar

**Sample size:** 12x12

**Yarn type:** TDX Nylon

**Dye method:** 100% Solution Dyed

**Pattern Match:** Not Required

**Powerbond construction options:** Powerbond Cushion, Powerbond Medfloor

**Modular construction options:** ethos Modular with Omnicat Technology, Flex-Aire Modular Cushion

**Surface texture:** Symtex

**Coordinate group:** Textures

\$\$\$\$\$





## ASSERTIVE ACTION 04837

WALK OFF SYSTEM | ASSERTIVE SERIES



26201  
CHROMIUM



26202  
STEELWORK



26203  
BLACKSMITH



26204  
GOLD ORE



26205  
TUNGSTEN



26206  
METAL ART



26207  
LEAD SHOT



26208  
FLASHING



26209  
IRIDIUM



26210  
BLUE FLAME



26211  
SMELTER



26212  
BLAST FURNACE



26213  
FORGE



26214  
DIE CAST



26215  
TEMPER



26216  
WEATHERED PATINA



26217  
FUSION



26218  
ETCH



26219  
MOLTEN



26220  
RED OXIDE



## ASSERTIVE STRIA 04839

WALK OFF SYSTEM | ASSERTIVE SERIES



26202 STEELWORK



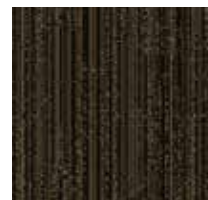
26201  
CHROMIUM



26202  
STEELWORK



26205  
TUNGSTEN



26207  
LEAD SHOT



26213  
FORGE



26215  
TEMPER

### Available Size / Installation Method:

24x24: Quarter Turn, Vertical Ashlar

9x36 & 18x36: Herringbone, Vertical Ashlar

**Sample size:** 12x12

**Yarn type:** TDX Nylon

**Dye method:** 100% Solution Dyed

**Pattern Match:** Not Required

**Powerbond construction options:** Powerbond Cushion, Powerbond Medfloor

**Modular construction options:** ethos Modular with Omnicoat Technology, Flex-Aire Modular Cushion

**Surface texture:** Stratatec Patterned Loop

**Coordinate group:** Textures

\$\$\$\$\$



## ASSERTIVE RIB 04838

WALK OFF SYSTEM | ASSERTIVE SERIES



26201 CHROMIUM



26201  
CHROMIUM



26202  
STEELWORK



26203  
BLACKSMITH

### Available Size / Installation Method:

24x24: Quarter Turn, Vertical Ashlar

9x36 & 18x36: Herringbone, Vertical Ashlar

**Sample size:** 12x12

**Yarn type:** TDX Nylon

**Dye method:** 100% Solution Dyed

**Pattern Match:** Not Applicable

**Modular construction options:** ethos Modular with Omnicoat Technology, Flex-Aire Modular Cushion

**Surface texture:** Textured Loop

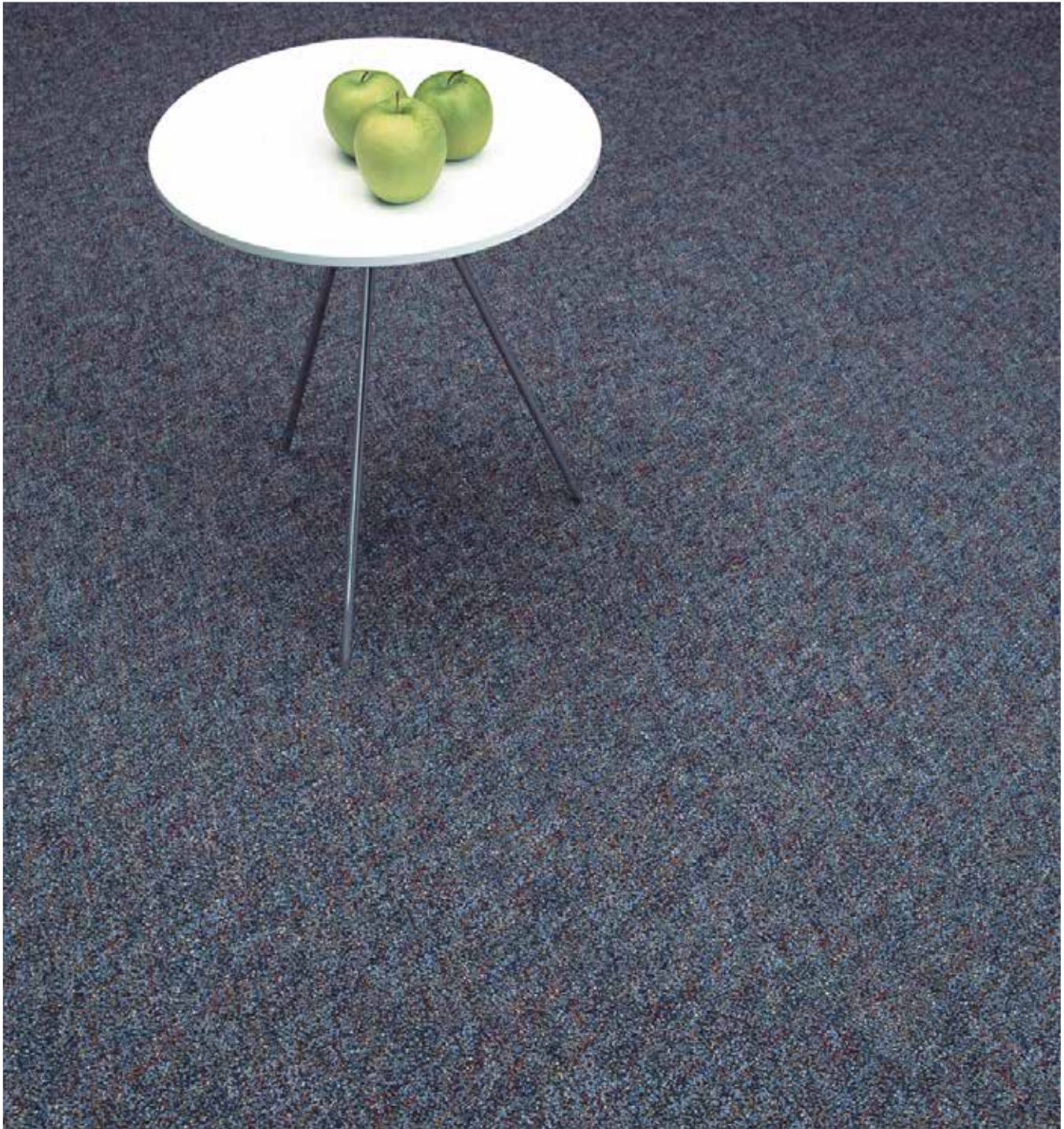
**Coordinate group:** Textures

\$\$\$\$\$





## APPLAUSE III 02803



28513 MEDITERRANEAN

**Available Size / Installation Method:**

24x24: Monolithic

18x36: Herringbone, Vertical Ashlar

**Sample size:** 24x24

**Yarn type:** Dynex Nylon

**Dye method:** Solution/Yarn Dyed

**Pattern Match:** Not Required

**Powerbond construction options:** Powerbond Cushion, Powerbond Medfloor

**Modular construction options:** ethos Modular with Omnicoat Technology, Flex-Aire Modular Cushion

**Surface texture:** Level Loop

**Coordinate group:** 3

\$\$\$\$





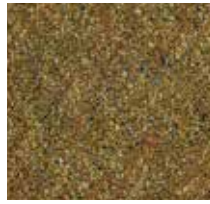
## APPLAUSE III 02803



28502  
MOSAIC



28503  
MINERAL



28504  
GOLDSTONE



28505  
TAPESTRY



28506  
JAMBALAYA



28507  
SEAWEED



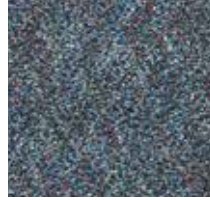
28508  
QUINCE



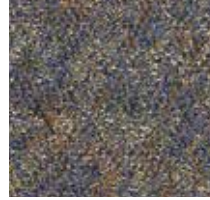
28509  
TORTOISE SHELL



28511  
WINTERGREEN



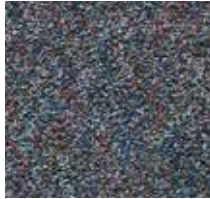
28513  
MEDITERRANEAN



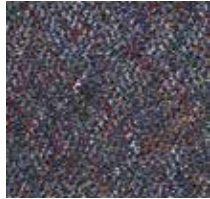
28514  
MENAGERIE



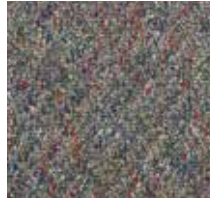
28515  
FIREWORKS



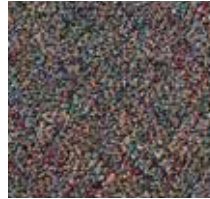
28517  
MARINE



28518  
LAPIS



28519  
WELLSPRING



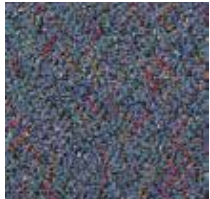
28520  
CARNIVAL



28521  
FOOTHILL



28523  
TIDE



28524  
MOODY BLUES



28525  
SKYSCRAPER



28526  
GOLDEN CITY



28529  
TENSILE



28531  
NIGHT LIGHT

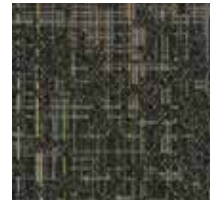


28532  
SEASHELL

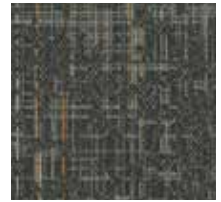
## COLORMAP 11130



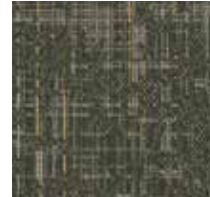
42807 NOCTURNAL



42801  
TOMORROWLAND



42802  
PICTOGRAM



42803  
DESERT PAVEMENT



42804  
MIMICRY



42805  
RURAL ROADS



42806  
MOUNTAIN SOIL



42807  
NOCTURNAL



42808  
LANDING ZONE



42809  
INDIAN INK



42810  
SPACE X

### Available Size / Installation Method:

24x24: Vertical Ashlar

**Sample size:** 24x24

**Yarn type:** Dynex SD Nylon

**Dye method:** 100% Solution Dyed

**Pattern Match:** Not Required

**Powerbond construction options:** Powerbond Cushion, Powerbond Medfloor

**Modular construction options:** ethos Modular with Omnicat Technology, Flex-Aire Modular Cushion

**Surface texture:** Stratatec Patterned Loop

**Coordinate group:** 16

\$\$\$

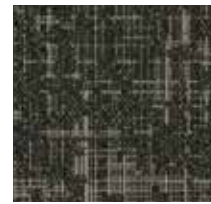




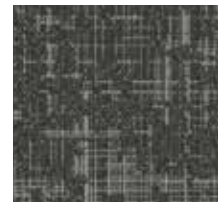
## TEXTUREMAP 11129



42809 INDIAN INK



42801  
TOMORROWLAND



42802  
PICTOGRAM



42803  
DESERT PAVEMENT



42804  
MIMICRY



42805  
RURAL ROADS



42806  
MOUNTAIN SOIL



42807  
NOCTURNAL



42808  
LANDING ZONE



42809  
INDIAN INK



42810  
SPACE X

JHANE BARNES

### Available Size / Installation Method:

24x24: Vertical Ashlar

9x36 & 18x36: Herringbone, Vertical Ashlar

**Sample size:** 24x24

**Yarn type:** Dynex SD Nylon

**Dye method:** 100% Solution Dyed

**Pattern Match:** Not Required

**Powerbond construction options:** Powerbond Cushion, Powerbond Medfloor

**Modular construction options:** ethos Modular with Omnicat Technology, Flex-Aire Modular Cushion

**Surface texture:** Stratatec Patterned Loop

**Coordinate group:** 16

\$\$\$





# GEOKNIT 10887

OPEN ARCHIVE COLLECTION



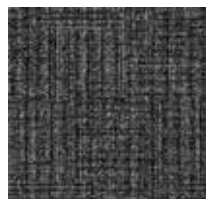
42703 SATURATED GREY



42702  
DATA CLOUD



42703  
SATURATED GREY



42704  
NOIR, NOIR



42710  
SHADOW GRIS



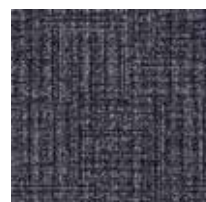
42713  
FELTED



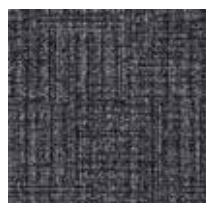
42714  
WOVEN CANE



42715  
SATEEN



42716  
PURPLE SAGE



42717  
DEEP INDIGO



42718  
OCEAN ISLE



42719  
IBIZA BREEZE



42720  
AFGHAN

## Available Size / Installation Method:

24x24: Vertical Ashlar

9x36 & 18x36: Herringbone, Vertical Ashlar

**Sample size:** 24x24, 9x36

**Yarn type:** TDX Nylon

**Dye method:** 100% Solution Dyed

**Pattern Match:** Not Required

**Powerbond construction options:** Powerbond Cushion, Powerbond Medfloor

**Modular construction options:** ethos Modular with Omnicat Technology, Flex-Aire Modular Cushion

**Surface texture:** Stratatec Patterned Loop

**Coordinate group:** 12

\$\$\$



## INTERCHANGE 04051

BIG CITY...BRIGHT LIGHTS COLLECTION | DEALER PROGRAM



36101 LIGHTS OUT



36101  
LIGHTS OUT



36102  
OPEN AIR



36103  
MASS TRANSIT



36105  
STEELHEAD



36108  
CURBSIDE/HIGH LINE



36112  
BROWN DERBY

### Available Size / Installation Method:

24x24: Vertical Ashlar

9x36 & 18x36: Herringbone, Vertical Ashlar

**Sample size:** 24x24

**Yarn type:** Dynex SD Nylon

**Dye method:** 100% Solution Dyed

**Pattern Match:** Not Applicable

**Modular construction options:** ethos Modular with Omnicat Technology, Flex-Aire Modular Cushion

**Surface texture:** Stratatec Patterned Loop

**Coordinate group:** 6

\$





## MAELSTROM 04849



33201 BLUE SPIRIT



33201  
BLUE SPIRIT



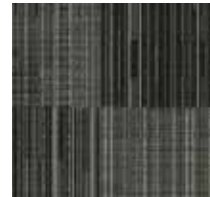
33202  
GREENWAY



33203  
ELECTRICITY



33204  
VARICOLOR



33205  
MERCURY RETROGRADE



33206  
STORMTROOPER



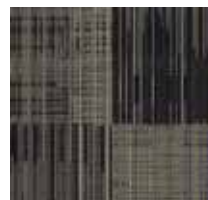
33207  
NEW AGE



33208  
STEEL STRUCTURE



33209  
NATURE CALLS



33210  
UNIVERSITY



33211  
SUNSET BEACH



33212  
TERRA FIRMA



33213  
CLAYMASTER

### Available Size / Installation Method:

24x24: Vertical Ashlar

18x36: Herringbone

**Sample size:** 24x24

**Yarn type:** Dynex SD Nylon

**Dye method:** 100% Solution Dyed

**Pattern Match:** Not Required

**Powerbond construction options:** Powerbond Cushion, Powerbond Medfloor

**Modular construction options:** ethos Modular with Omnicoat Technology, Flex-Aire Modular Cushion

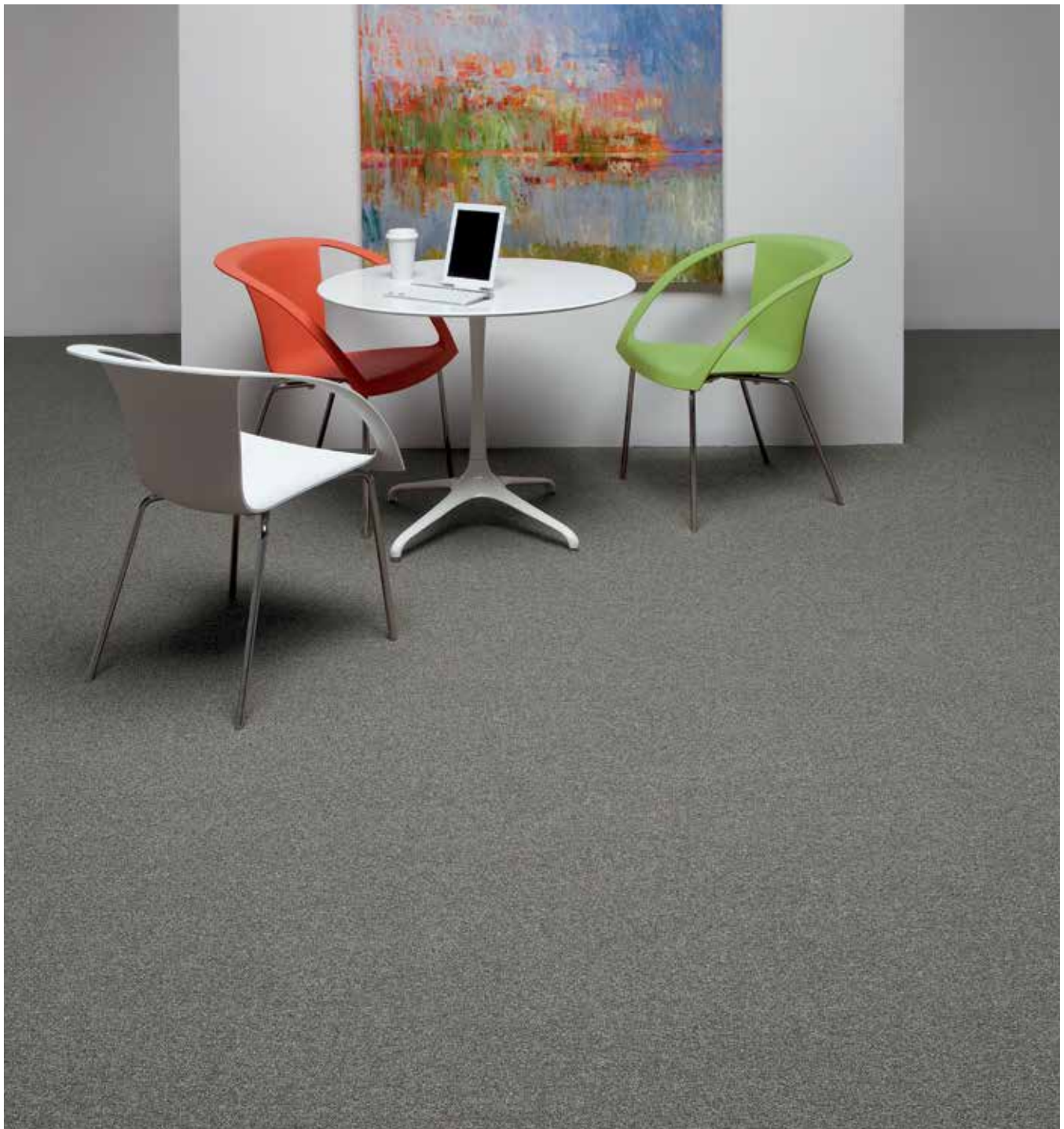
**Surface texture:** Stratatec Patterned Loop

**Coordinate group:** 16

\$\$\$



## PLEXUS COLOUR IV 02875



18575 FOG BEACON

**Available Size / Installation Method:**

24x24: Monolithic

9x36 & 18x36: Herringbone, Vertical Ashlar

**Sample size:** 12x12

**Yarn type:** Dynex SD Nylon

**Dye method:** 100% Solution Dyed

**Pattern Match:** Not Required

**Powerbond construction options:** Powerbond Cushion, Powerbond Medfloor

**Modular construction options:** ethos Modular with Omnicat Technology, Flex-Aire Modular Cushion

**Surface texture:** Symtex

**Coordinate group:** Solids

\$\$\$\$\$





## PLEXUS COLOUR IV 02875



**18501**  
MOON BEAM



**18502**  
BRUSHED SILVER



**18504**  
PEAT MOSS



**18505**  
FLINT STONE



**18507**  
SMOKE SCREEN



**18508**  
GROUND PEPPER



**18509**  
GUN POWDER



**18510**  
COFFEE BEAN



**18511**  
DEEP BROWN



**18512**  
BLACK BIRD



**18516**  
GINGER SNAP



**18519**  
SADDLE BACK



**18522**  
GOLD RUSH



**18524**  
RED WOOD



**18525**  
TEAL BLUE



**18531**  
KEY LIME



**18533**  
PINE BOWS



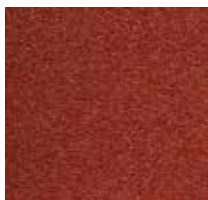
**18534**  
COASTAL SAGE



**18537**  
BING CHERRY



**18538**  
RED HOT



**18539**  
TERRA ROSA



**18540**  
CONCORD GRAPE



**18542**  
DUSTY LILAC



**18543**  
PURPLE HAZE



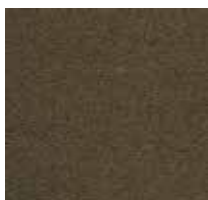
**18545**  
OCEAN STORM



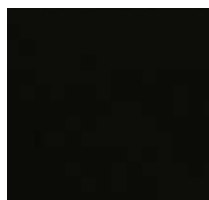
**18546**  
LAPIZ LAZULI



**18548**  
GREAT LAKES



**18550**  
SOFT TAUPE



**18552**  
DARK SHADOW



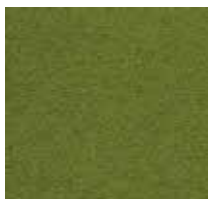
**18553**  
ORANGE JULIUS



**18554**  
BRIGHT CYAN



**18555**  
SALT RIVER



**18556**  
LIME ZEST



**18558**  
TICKLED PINK

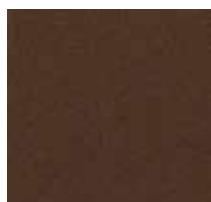


**18559**  
PASSION FLOWER

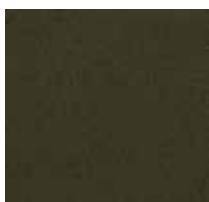


**18560**  
LEMON PEEL

## PLEXUS COLOUR IV 02875



**18561**  
NATURAL HENNA



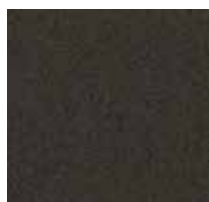
**18562**  
ALDER LEAF



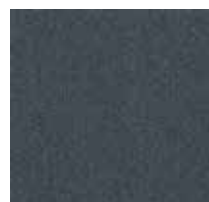
**18563**  
CLAY EARTH



**18564**  
LUNAR VALLEY



**18565**  
IRON AGE



**18566**  
WIND WAVE



**18567**  
MILKY OPAL



**18568**  
ASH GLAZE



**18569**  
STEEL WOOL



**18570**  
DARK OLIVINE



**18571**  
GLACIER BAY



**18572**  
PEACOCK CREST



**18573**  
ANTIQUE GARNET



**18574**  
BAJA DUNES



**18575**  
FOG BEACON



**18576**  
DOVE COTE



**18577**  
ANDALE ANDALE



**18578**  
BLUMEN OLIVA



**18579**  
FRENCH CITRONE



**18580**  
JAMAICAN LAKE



**18581**  
GREEN ANJOU



**18582**  
CANDY APPLE



**18583**  
LIBERTY BLUE



**18584**  
OVER SHADOW



## SUBSTANCE 11449

ESSENTIALIST COLLECTION



76208 INGRESS



76201  
QUINTESSENCE



76202  
CLERESTORY



76203  
SOVEREIGN



76204  
BLOCK OUT



76205  
TERRENE



76206  
NATURAL BLUSH



76207  
PURE PARCHMENT



76208  
INGRESS



76209  
CYPRESS GROVE



76210  
SEA ISLE



76211  
ROSEWOOD



76212  
SOFT TWILIGHT

### Available Size / Installation Method:

24x24: Vertical Ashlar

9x36 & 18x36: Herringbone, Vertical Ashlar

**Sample size:** 18x36

**Yarn type:** Dynex SD Nylon

**Dye method:** 100% Solution Dyed

**Pattern Match:** Not Applicable

**Modular construction options:** ethos Modular with Omnicot Technology, Flex-Aire Modular Cushion

**Surface texture:** Stratatec Patterned Loop

**Coordinate group:** 12

\$



## TAILORED MADRAS 11284



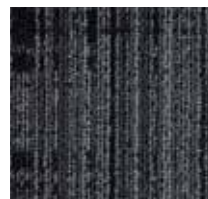
14709 SHAKER



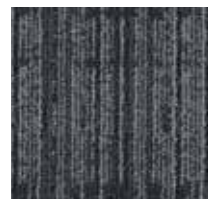
14701  
BASELINE



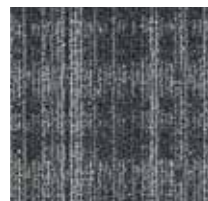
14702  
CANDLEWICK



14703  
DOMINO



14704  
CHAINLINK



14705  
RAINFALL



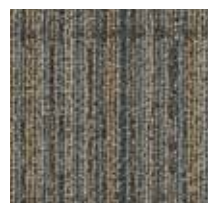
14706  
MALTED



14707  
CERAMIC



14708  
BRUNETTE



14709  
SHAKER

### Available Size / Installation Method:

24x24: Vertical Ashlar  
9x36: Herringbone, Vertical Ashlar  
18x36: Herringbone

**Sample size:** 9x36

**Yarn type:** Dynex SD Nylon

**Dye method:** 100% Solution Dyed

**Pattern match:** Not Applicable

**Modular construction options:** ethos Modular with Omnicat Technology, Flex-Aire Modular Cushion

**Surface texture:** Stratatec Patterned Loop

**Coordinate group:** 12

\$\$\$





## ACADIA 44069

ISLANDGATE COLLECTION



02980 KOALA GREY



02970  
HIGHLIGHT



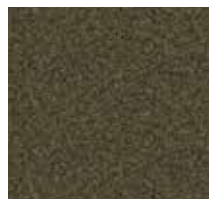
02971  
SAIL CLOTH



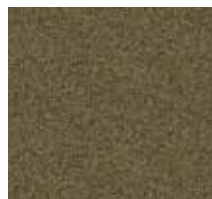
02972  
SHORE



02973  
SUNBRIGHT



02974  
COAST



02975  
CIDER



02976  
CEDAR PLANK



02977  
SNOW MOON



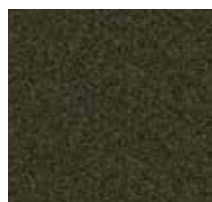
02978  
HARBOUR BREEZE



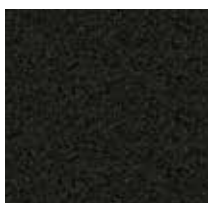
02979  
SALT STONE



02980  
KOALA GREY



02981  
DARK GRIEGE



02982  
RAVENWOOD



03073  
WASHED PINE



03074  
WHITE BIRCH



03075  
SAND POINT

**Sample Size:** 12x18  
**Yarn type:** Dynex SD Nylon  
**Dye method:** 100% Solution Dyed  
**Pattern match:** 12" W x 31.81" L  
**Tufted Broadloom construction options:** Super-Lok, LifeLong, ErgoStep  
**Surface texture:** Tufted Patterned Loop  
**Coordinate group:** Textures  
**\$\$**

## AUGUSTINE 44067

ISLANDGATE COLLECTION



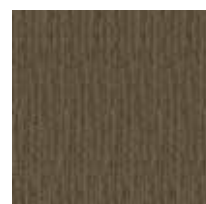
02976 CEDAR PLANK



02970  
HIGHLIGHT



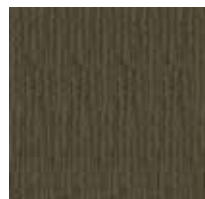
02971  
SAIL CLOTH



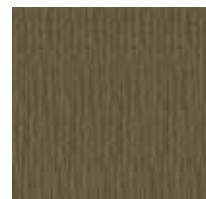
02972  
SHORE



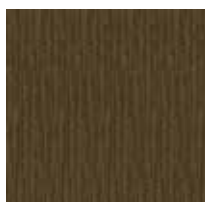
02973  
SUNBRIGHT



02974  
COAST



02975  
CIDER



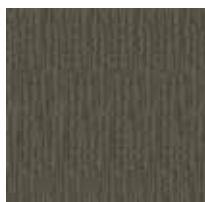
02976  
CEDAR PLANK



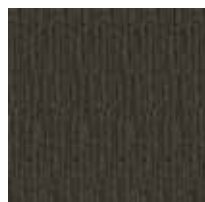
02977  
SNOW MOON



02978  
HARBOUR BREEZE



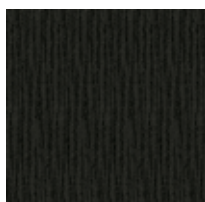
02979  
SALT STONE



02980  
KOALA GREY



02981  
DARK GREIGE



02982  
RAVENWOOD



03073  
WASHED PINE



03074  
WHITE BIRCH



03075  
SAND POINT

**Sample Size:** 12x18  
**Yarn type:** Dynex SD Nylon  
**Dye method:** 100% Solution Dyed  
**Pattern match:** 12" W x 52.94" L  
**Tufted Broadloom construction options:** Super-Lok, LifeLong, ErgoStep  
**Surface texture:** Tufted Patterned Tipshear  
**Coordinate group:** Textures  
**\$\$**



# DALVAY 44066

ISLANDGATE COLLECTION



02970 HIGHLIGHT



02970  
HIGHLIGHT



02971  
SAIL CLOTH



02972  
SHORE



02973  
SUNBRIGHT



02974  
COAST



02975  
CIDER



02976  
CEDAR PLANK



02977  
SNOW MOON



02978  
HARBOUR BREEZE



02979  
SALT STONE



02980  
KOALA GREY



02981  
DARK GREIGE



02982  
RAVENWOOD



03073  
WASHED PINE



03074  
WHITE BIRCH



03075  
SAND POINT

**Sample Size:** 12x18  
**Yarn type:** Dynex SD Nylon  
**Dye method:** 100% Solution Dyed  
**Pattern match:** 12" W x 14.12" L  
**Tufted Broadloom construction options:** Super-Lok, LifeLong, ErgoStep  
**Surface texture:** Tufted Patterned Loop  
**Coordinate group:** Textures  
**\$\$**

## STRATFORD 44068

ISLANDGATE COLLECTION



02981 DARK GREIGE



02970  
HIGHLIGHT



02971  
SAIL CLOTH



02972  
SHORE



02973  
SUNBRIGHT



02974  
COAST



02975  
CIDER



02976  
CEDAR PLANK



02977  
SNOW MOON



02978  
HARBOUR BREEZE



02979  
SALT STONE



02980  
KOALA GREY



02981  
DARK GREIGE



02982  
RAVENWOOD



03073  
WASHED PINE



03074  
WHITE BIRCH



03075  
SAND POINT

**Sample Size:** 12x18

**Yarn type:** Dynex SD Nylon

**Dye method:** 100% Solution Dyed

**Pattern match:** 12" W x 19.66" L

**Tufted Broadloom construction options:** Super-Lok, LifeLong, ErgoStep

**Surface texture:** Tufted Patterned Loop

**Coordinate group:** Textures

\$\$





## THOROUGHFARE 04042

BIG CITY...BRIGHT LIGHTS COLLECTION | DEALER PROGRAM



36101 LIGHTS OUT



36101  
LIGHTS OUT



36102  
OPEN AIR



36105  
STEELHEAD



36108  
CURBSIDE / HIGH LINE



36112  
BROWN DERBY



46103  
MASS TRANSIT

### Available Size / Installation Method:

24x24: Quarter Turn

**Sample size:** 24x24

**Yarn type:** Dynex SD Nylon

**Dye method:** 100% Solution Dyed

**Pattern Match:** Not Applicable

**Modular construction options:** ethos Modular with Omnicoat Technology, Flex-Aire Modular Cushion

**Surface texture:** Stratatec Patterned Loop

**Coordinate group:** 6

\$



**ZONA III 44031**  
ISLANDGATE COLLECTION



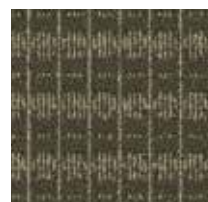
02980 KOALA GREY



02970  
HIGHLIGHT



02971  
SAIL CLOTH



02972  
SHORE



02973  
SUNBRIGHT



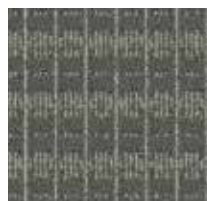
02974  
COAST



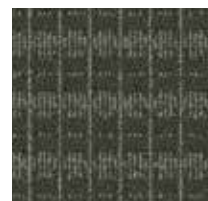
02975  
CIDER



02976  
CEDAR PLANK



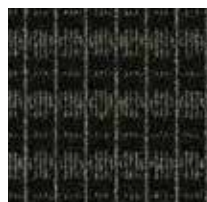
02977  
SNOW MOON



02978  
HARBOUR BREEZE



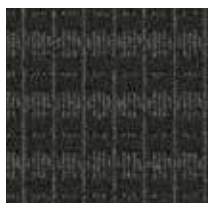
02979  
SALT STONE



02980  
KOALA GREY



02981  
DARK GRIEGE



02982  
RAVENWOOD

**Sample Size:** 12x18  
**Yarn type:** Dynex SD Nylon  
**Dye method:** 100% Solution Dyed  
**Pattern match:** 1.20" W x 2.42" L  
**Tufted Broadloom construction options:** Super-Lok, LifeLong, ErgoStep  
**Surface texture:** Tufted Patterned Tipshear  
**Coordinate group:** 4  
\$\$



**ARTERRA**  
CONTOUR DIGITAL LIBRARY



PCAT 10386 OBERON



PCAT 10385  
EUROPA



PCAT 10386  
OBERON



PCAT 10387  
TITANIA

**Sizes / Installation Method:**  
6x36: Herringbone, Unidirectional  
**Sample Size:** 6x6, 6x36  
**Construction:** Heterogeneous Vinyl Tile, Digitally Printed  
**Wear Layer Thickness:** 32 mil wear layer, 0.120" (3mm) overall thickness  
**Standard Emboss:** Quarry (QU)  
**Edge Treatment:** Square Edge (SE)  
**Protection:** Techtonic  
**Wear Warranty:** 25 year  
**See Adhesives** pg. 574

## ARTIFICE

CONTOUR DIGITAL LIBRARY



PCAR 10770 FORGED, PCAR 10773 PILLAR



PCAR 10770  
FORGED



PCAR 10771  
HONED METAL



PCAR 10772  
INTERLACE



PCAR 10773  
PILLAR

### Sizes / Installation Method:

18x18: Horizontal Ashlar, Quarter Turn, Vertical Ashlar

12x36: Vertical Ashlar

**Sample Size:** 6x6, 18x18

**Construction:** Heterogeneous Vinyl Tile, Digitally Printed

**Wear Layer Thickness:** 32 mil wear layer, 0.120" (3mm) overall thickness

**Standard Emboss:** Quarry (QU)

**Edge Treatment:** Square Edge (SE)

**Protection:** Techtonic

**Wear Warranty:** 25 year

**See Adhesives** pg. 574





## ASPHALT

CONTOUR SERIES - STONE



PCAS 0721 ASPHALT



PCAS 0721  
ASPHALT

**Sizes / Installation Method:**

18x18: Quarter Turn

**Sample Size:** 6x6, 18x18

**Construction:** Heterogeneous Vinyl Tile

**Wear Layer Thickness:** 32 mil wear layer, 0.120" (3mm) overall thickness

**Standard Emboss:** Pathway (PH)

**Edge Treatment:** Square Edge (SE)

**Protection:** Technonic

**Wear Warranty:** 25 year

**See Adhesives** pg. 574

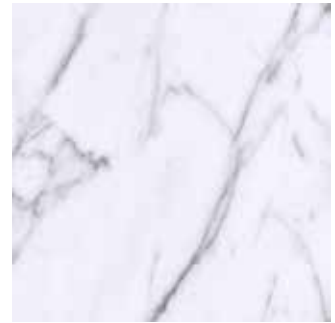


## CARRERA

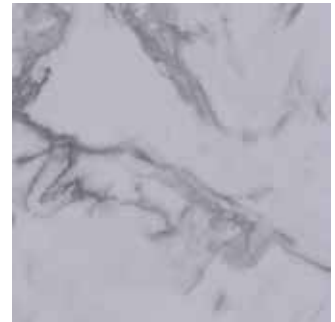
CONTOUR DIGITAL LIBRARY



PCRA 10061 VENETIAN GREY



PCRA 10060  
ITALIANA



PCRA 10061  
VENETIAN GREY

### Sizes / Installation Method:

18x18: Horizontal Ashlar, Quarter Turn, Vertical Ashlar

12x36: Vertical Ashlar

**Sample Size:** 6x6, 18x18

**Construction:** Heterogeneous Vinyl Tile, Digitally Printed

**Wear Layer Thickness:** 32 mil wear layer, 0.120" (3mm) overall thickness

**Standard Emboss:** Quarry (QU)

**Edge Treatment:** Square Edge (SE)

**Protection:** Technonic

**Wear Warranty:** 25 year

**See Adhesives** pg. 574





## CARRERA ACCENT

CONTOUR DIGITAL LIBRARY



PCRA 10413 LIGHT SHIMMER



PCRA 10411  
COPPERGATE



PCRA 10413  
LIGHT SHIMMER



PCRA 10414  
BRONZED

### Sizes / Installation Method:

18x18: Horizontal Ashlar, Quarter Turn, Vertical Ashlar

12x36: Vertical Ashlar

**Sample Size:** 6x6, 18x18

**Construction:** Heterogeneous Vinyl Tile, Digitally Printed

**Wear Layer Thickness:** 32 mil wear layer, 0.120" (3mm) overall thickness

**Standard Emboss:** Quarry (QU)

**Edge Treatment:** Square Edge (SE)

**Protection:** Techtonic

**Wear Warranty:** 25 year

**See Adhesives** pg. 574



## CONCRETE

CONTOUR SERIES - STONE



PCCN 0712 SOAPSTONE, PCCN 0710 PRUSSIAN  
(CUSTOM SIZE AND INSTALLATION)



PCCN 0710  
PRUSSIAN



PCCN 0712  
SOAPSTONE



PCCN 0718  
METRO

### Sizes / Installation Method:

18x18, 36x36: Horizontal Ashlar, Quarter Turn, Vertical Ashlar

12x24: Vertical Ashlar

**Sample Size:** 6x6, 18x18

**Construction:** Heterogeneous Vinyl Tile

**Wear Layer Thickness:** 32 mil wear layer, 0.120" (3mm) overall thickness

**Standard Emboss:** Quarry (QU)

**Edge Treatment:** Square Edge (SE)

**Protection:** Techtonic

**Wear Warranty:** 25 year

**See Adhesives** pg. 574



## CONCRETE

### CONTOUR SERIES - STONE



PCCN 7241 ATLANTIS BROWN



PCCN 7241  
ATLANTIS BROWN



PCCN 7243  
ATLANTIS GRAY

#### Sizes / Installation Method:

18x18, 36x36: Horizontal Ashlar, Quarter Turn, Vertical Ashlar

12x24: Vertical Ashlar

**Sample Size:** 6x6, 18x18

**Construction:** Heterogeneous Vinyl Tile

**Wear Layer Thickness:** 32 mil wear layer, 0.120" (3mm) overall thickness

**Standard Emboss:** Pathway (PH)

**Edge Treatment:** Square Edge (SE)

**Protection:** Techtonic

**Wear Warranty:** 25 year

**See Adhesives** pg. 574

## FOSSIL STONE

CONTOUR SERIES - STONE



PCFS 0830 JORY  
(CUSTOM BORDER)



PCFS 0830  
JORY



PCFS 0834  
ACORN

### Sizes / Installation Method:

18x18: Horizontal Ashlar, Quarter Turn, Vertical Ashlar  
12x24: Vertical Ashlar

**Sample Size:** 6x6, 18x18

**Construction:** Heterogeneous Vinyl Tile

**Wear Layer Thickness:** 32 mil wear layer, 0.120" (3mm) overall thickness

**Standard Emboss:** Quarry (QU)

**Edge Treatment:** Square Edge (SE)

**Protection:** Techtonic

**Wear Warranty:** 25 year

**See Adhesives** pg. 574



## LEGACY STONE

CONTOUR SERIES - STONE



PCLE 0541 ARCADIAN PILAR



PCLE 0541  
ARCADIAN PILAR

### Sizes / Installation Method:

18x18: Horizontal Ashlar, Quarter Turn, Vertical Ashlar

12x24: Vertical Ashlar

**Sample Size:** 6x6, 18x18

**Construction:** Heterogeneous Vinyl Tile

**Wear Layer Thickness:** 32 mil wear layer, 0.120" (3mm) overall thickness

**Standard Emboss:** Quarry (QU)

**Edge Treatment:** Square Edge (SE)

**Protection:** Technonic

**Wear Warranty:** 25 year

**See Adhesives** pg. 574



## LEGACY STONE

CONTOUR SERIES - STONE



PCLE 0553 SANTORINI TANDEM



PCLE 0553  
SANTORINI TANDEM



PCLE 0557  
SANTORINI ARGOS

### Sizes / Installation Method:

18x18: Horizontal Ashlar, Quarter Turn, Vertical Ashlar

12x24: Vertical Ashlar

**Sample Size:** 6x6, 18x18

**Construction:** Heterogeneous Vinyl Tile

**Wear Layer Thickness:** 32 mil wear layer, 0.120" (3mm) overall thickness

**Standard Emboss:** Pathway (PH)

**Edge Treatment:** Square Edge (SE)

**Protection:** Techtonic

**Wear Warranty:** 25 year

**See Adhesives** pg. 574



## METAMORPHIC

CONTOUR DIGITAL LIBRARY



PCMP 11079 MESA



PCMP 11078  
DUNES



PCMP 11079  
MESA

### Sizes / Installation Method:

9x36: Vertical Ashlar

**Sample Size:** 6x6, 9x36

**Construction:** Heterogeneous Vinyl Tile, Digitally Printed

**Wear Layer Thickness:** 32 mil wear layer, 0.120" (3mm) overall thickness

**Standard Emboss:** Quarry (QU)

**Edge Treatment:** Square Edge (SE)

**Protection:** Techtonic

**Wear Warranty:** 25 year

**See Adhesives** pg. 574



## MODERN STONE

CONTOUR DIGITAL LIBRARY



PCMS 0630 CANYON LAKE



PCMS 0630  
CANYON LAKE



PCMS 0631  
RIALTO



PCMS 0632  
UPPER EAST SIDE



PCMS 0633  
MONTEREY



### Sizes / Installation Method:

18x18: Quarter Turn, Vertical Ashlar, Horizontal Ashlar

12x24: Vertical Ashlar

**Sample Size:** 6x6, 18x18

**Construction:** Heterogeneous Vinyl Tile, Digitally Printed

**Wear Layer Thickness:** 32 mil wear layer, 0.120" (3mm) overall thickness

**Standard Emboss:** Quarry (QU)

**Edge Treatment:** Square Edge (SE)

**Protection:** Techtonic

**Wear Warranty:** 25 year

**See Adhesives** pg. 574





## PARISIAN

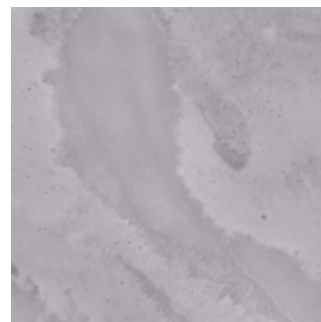
CONTOUR DIGITAL LIBRARY



PCPR 10070 GRIS



PCPR 10069  
POMPEII



PCPR 10070  
GRIS



PCPR 10071  
SABLE

### Sizes / Installation Method:

18x18: Horizontal Ashlar, Quarter Turn, Vertical Ashlar

12x36: Vertical Ashlar

**Sample Size:** 6x6, 18x18

**Construction:** Heterogeneous Vinyl Tile, Digitally Printed

**Wear Layer Thickness:** 32 mil wear layer, 0.120" (3mm) overall thickness

**Standard Emboss:** Quarry (QU)

**Edge Treatment:** Square Edge (SE)

**Protection:** Techtonic

**Wear Warranty:** 25 year

**See Adhesives** pg. 574

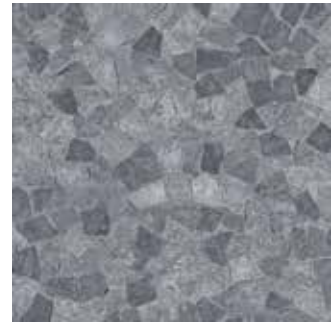


## PASSAGEWAY

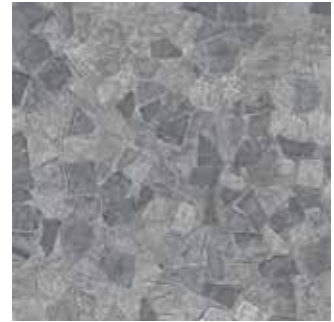
CONTOUR DIGITAL LIBRARY



PCPA 0842 CREEKSIDE



PCPA 0840  
SEASIDE



PCPA 0841  
RIVERSIDE



PCPA 0842  
CREEKSIDE

### Sizes / Installation Method:

18x18: Horizontal Ashlar, Quarter Turn, Vertical Ashlar

**Sample Size:** 6x6, 18x18

**Construction:** Heterogeneous Vinyl Tile, Digitally Printed

**Wear Layer Thickness:** 32 mil wear layer, 0.120" (3mm) overall thickness

**Standard Emboss:** Pathway (PH)

**Edge Treatment:** Square Edge (SE)

**Protection:** Techtonic

**Wear Warranty:** 25 year

**See Adhesives** pg. 574





**ROCHEUX by NOLAN BECK**  
GIRONDE COLLECTION/CONTOUR DIGITAL LIBRARY



**PCRO 10238**  
**CATHEDRAL**

**PCRO 10238 CATHEDRAL, GIRONDE II NB002-210**



Contact a Tarkett Hospitality representative to learn more about carpet product shown.

**Sizes / Installation Method:**

18x18: Horizontal Ashlar, Quarter Turn, Vertical Ashlar

9x36: Vertical Ashlar

**Sample Size:** 6x6, 18x18

**Construction:** Heterogeneous Vinyl Tile, Digitally Printed

**Wear Layer Thickness:** 32 mil wear layer, 0.120" (3mm) overall thickness

**Standard Emboss:** Quarry (QU)

**Edge Treatment:** Square Edge (SE)

**Protection:** Techtonic

**Wear Warranty:** 25 year

**See Adhesives** pg. 574



## RUST RINGS

INDIGENOUS EARTH COLLECTION | CONTOUR DIGITAL LIBRARY



PCRR 4325 CHROMIUM



PCRR 4321  
TRACE



PCRR 4323  
DAYBREAK



PCRR 4325  
CHROMIUM



PCRR 4327  
SEDIMENT

### Sizes / Installation Method:

18x18, 36x36: Horizontal Ashlar, Quarter Turn, Vertical Ashlar

6x36: Herringbone, Unidirectional

12x36, 18x36: Vertical Ashlar

**Sample Size:** 6x6, 18x18

**Construction:** Heterogeneous Vinyl Tile, Digitally Printed

**Wear Layer Thickness:** 32 mil wear layer, 0.120" (3mm) overall thickness

**Standard Emboss:** Pathway (PH)

**Edge Treatment:** Square Edge (SE)

**Protection:** Techtonic

**Wear Warranty:** 25 year

**See Adhesives** pg. 574





## SOLSTICE

INDIGENOUS EARTH COLLECTION | CONTOUR DIGITAL LIBRARY



PCSO 4434 TROPIC



PCSO 4422  
TRITON



PCSO 4424  
TEPHRA



PCSO 4426  
COMET

### Sizes / Installation Method:

18x18, 36x36: Horizontal Ashlar, Quarter Turn, Vertical Ashlar

6x36: Herringbone, Unidirectional

12x36, 18x36: Vertical Ashlar

**Sample Size:** 6x6, 18x18

**Construction:** Heterogeneous Vinyl Tile, Digitally Printed

**Wear Layer Thickness:** 32 mil wear layer, 0.120" (3mm) overall thickness

**Standard Emboss:** Pathway (PH)

**Edge Treatment:** Square Edge (SE)

**Protection:** Techtonic

**Wear Warranty:** 25 year

**See Adhesives** pg. 574

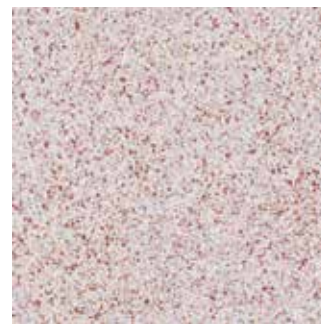


## TERRAZZO

NOWHAUS COLLECTION/CONTOUR DIGITAL LIBRARY



PCTZ 10241 ROSE GOLD



PCTZ 10241  
ROSE GOLD

Contact a Tarkett Hospitality representative to learn more about carpet product shown.



### Sizes / Installation Method:

18x18: Horizontal Ashlar, Quarter Turn, Vertical Ashlar

**Sample Size:** 6x6, 18x18

**Construction:** Heterogeneous Vinyl Tile, Digitally Printed

**Wear Layer Thickness:** 32 mil wear layer, 0.120" (3mm) overall thickness

**Standard Emboss:** Quarry (QU)

**Edge Treatment:** Square Edge (SE)

**Protection:** Techtonic

**Wear Warranty:** 25 year

**See Adhesives** pg. 574





## VESTIGE

CONTOUR SERIES - STONE



PCVE 1019 CRETE



PCVE 1018  
MOTH



PCVE 1019  
CRETE

### Sizes / Installation Method:

18x18: Horizontal Ashlar, Quarter Turn, Vertical Ashlar

12x24: Vertical Ashlar

**Sample Size:** 6x6, 18x18

**Construction:** Heterogeneous Vinyl Tile

**Wear Layer Thickness:** 32 mil wear layer, 0.120" (3mm) overall thickness

**Standard Emboss:** Quarry (QU)

**Edge Treatment:** Square Edge (SE)

**Protection:** Technonic

**Wear Warranty:** 25 year

**See Adhesives** pg. 574



## ANTIQUE WOOD

CONTOUR DIGITAL LIBRARY



PCAN 3810 DANBURY



PCAN 3810  
DANBURY



PCAN 3811  
FARMINGTON

### Sizes / Installation Method:

4x36, 6x36, 6x48: Herringbone, Unidirectional

**Sample Size:** 6x6, 6x36

**Construction:** Heterogeneous Vinyl Tile, Digitally Printed

**Wear Layer Thickness:** 32 mil wear layer, 0.120" (3mm) overall thickness

**Standard Emboss:** Sawn Wood (SW)

**Edge Treatment:** Square Edge (SE)

**Protection:** Techtonic

**Wear Warranty:** 25 year

**See Adhesives** pg. 574





## ANTIQUE WOOD

CONTOUR SERIES - WOOD



PCAN 0302 VINTAGE CABIN, PCAN 0301 VINTAGE LODGE, PCAN 0305 VINTAGE TOWER  
(CUSTOM SIZE AND INSTALLATION)



PCAN 0301  
VINTAGE LODGE



PCAN 0302  
VINTAGE CABIN



PCAN 0305  
VINTAGE TOWER



PCAN 0306  
VINTAGE INN

### Sizes / Installation Method:

4x36, 6x36 & 6x48: Herringbone, Unidirectional

**Sample Size:** 6x6, 6x36

**Construction:** Heterogeneous Vinyl Tile

**Wear Layer Thickness:** 32 mil wear layer, 0.120" (3mm) overall thickness

**Standard Emboss:** Sawn Wood (SW)

**Edge Treatment:** Square Edge (SE)

**Protection:** Techtonic

**Wear Warranty:** 25 year

**See Adhesives** pg. 574



## ANTIQUE WOOD

CONTOUR SERIES - WOOD



PCAN 0359 RUSTIC CEDAR  
(CUSTOM INSTALLATION)



PCAN 0359  
RUSTIC CEDAR



PCAN 0353  
PACIFIC SHOREHOUSE



PCAN 0357  
DRIFTWOOD



PCAN 0351  
PACIFIC BOATHOUSE



PCAN 3512  
METALLIC BLACK

### Sizes / Installation Method:

4x36, 6x36, 6x48: Herringbone, Unidirectional

**Sample Size:** 6x6, 6x36

**Construction:** Heterogeneous Vinyl Tile

**Wear Layer Thickness:** 32 mil wear layer, 0.120" (3mm) overall thickness

**Standard Emboss:** Rough Grain (RG)

**Edge Treatment:** Square Edge (SE)

**Protection:** Techtonic

**Wear Warranty:** 25 year

**See Adhesives** pg. 574



## ANTIQUE WOOD

CONTOUR SERIES - WOOD



PCAN 0383 WILD BOHEMIAN  
(CUSTOM INSTALLATION)



PCAN 0383  
WILD BOHEMIAN

### Sizes / Installation Method:

4x36, 6x36, 6x48: Herringbone, Unidirectional

**Sample Size:** 6x6, 6x36

**Construction:** Heterogeneous Vinyl Tile

**Wear Layer Thickness:** 32 mil wear layer, 0.120" (3mm) overall thickness

**Standard Emboss:** Natural Grain (NG)

**Edge Treatment:** Square Edge (SE)

**Protection:** Techtonic

**Wear Warranty:** 25 year

**See Adhesives** pg. 574



## ANTIQUE WOOD

CONTOUR SERIES - WOOD



PCAN 3720 CELLAR OAK  
(CUSTOM SIZE AND INSTALLATION)



PCAN 3720  
CELLAR OAK

**Sizes / Installation Method:**

4x36, 6x36, 6x48: Herringbone, Unidirectional

**Sample Size:** 6x6, 6x36

**Construction:** Heterogeneous Vinyl Tile

**Wear Layer Thickness:** 32 mil wear layer, 0.120" (3mm) overall thickness

**Standard Emboss:** Sawn Wood (SW)

**Edge Treatment:** Square Edge (SE)

**Protection:** Techtonic

**Wear Warranty:** 25 year

**See Adhesives** pg. 574



## ANTIQUE WOOD

CONTOUR DIGITAL LIBRARY



PCAN 3815 SANDALWOOD



PCAN 3815  
SANDLEWOOD



PCAN 3816  
HEMLOCK

### Sizes / Installation Method:

4x36, 6x36, 6x48: Herringbone, Unidirectional

**Sample Size:** 6x6, 6x36

**Construction:** Heterogeneous Vinyl Tile, Digitally Printed

**Wear Layer Thickness:** 32 mil wear layer, 0.120" (3mm) overall thickness

**Standard Emboss:** Quarry (QU)

**Edge Treatment:** Square Edge (SE)

**Protection:** Techtonic

**Wear Warranty:** 25 year

**See Adhesives** pg. 574



## EXOTIC WOOD

CONTOUR SERIES - WOOD



PCEX 3205 KINGWOOD



PCEX 3205  
KINGWOOD

**Sizes / Installation Method:**

4x36, 6x36, 6x48: Herringbone, Unidirectional

**Sample Size:** 6x6, 6x36

**Construction:** Heterogeneous Vinyl Tile

**Wear Layer Thickness:** 32 mil wear layer, 0.120" (3mm) overall thickness

**Standard Emboss:** Natural Grain (NG)

**Edge Treatment:** Square Edge (SE)

**Protection:** Techtonic

**Wear Warranty:** 25 year

**See Adhesives** pg. 574



## EXOTIC WOOD

CONTOUR SERIES - WOOD



PCEX 3213 TRIO WALNUT



PCEX 3213  
TRIO WALNUT

**Sizes / Installation Method:**

4x36, 6x36, 6x48: Herringbone, Unidirectional

**Sample Size:** 6x6, 6x36

**Construction:** Heterogeneous Vinyl Tile

**Wear Layer Thickness:** 32 mil wear layer, 0.120" (3mm) overall thickness

**Standard Emboss:** Tick (TK)

**Edge Treatment:** Square Edge (SE)

**Protection:** Technonic

**Wear Warranty:** 25 year

**See Adhesives** pg. 574



## EXOTIC WOOD

CONTOUR SERIES - WOOD



PCEX 3214 CAMPHOR WOOD



PCEX 3210  
BRAZILIAN CHERRY



PCEX 3214  
CAMPHOR WOOD

### Sizes / Installation Method:

4x36, 6x36, 6x48: Herringbone, Unidirectional

**Sample Size:** 6x6, 6x36

**Construction:** Heterogeneous Vinyl Tile

**Wear Layer Thickness:** 32 mil wear layer, 0.120" (3mm) overall thickness

**Standard Emboss:** Tick (TK)

**Edge Treatment:** Square Edge (SE)

**Protection:** Techtonic

**Wear Warranty:** 25 year

**See Adhesives** pg. 574



## EXOTIC WOOD

CONTOUR SERIES - WOOD



PCEX 3301  
ZEBRANO

PCEX 3301 ZEBRANO  
(CUSTOM INSTALLATION)

**Sizes / Installation Method:**

4x36, 6x36, 6x48: Herringbone, Unidirectional

**Sample Size:** 6x6, 6x36

**Construction:** Heterogeneous Vinyl Tile

**Wear Layer Thickness:** 32 mil wear layer, 0.120" (3mm) overall thickness

**Standard Emboss:** Tick (TK)

**Edge Treatment:** Square Edge (SE)

**Protection:** Techtonic

**Wear Warranty:** 25 year

**See Adhesives** pg. 574

## EXOTIC WOOD

CONTOUR SERIES - WOOD



PCEX 3302 FRUITWOOD



PCEX 3302  
FRUITWOOD

**Sizes / Installation Method:**

4x36, 6x36, 6x48: Herringbone, Unidirectional

**Sample Size:** 6x6, 6x36

**Construction:** Heterogeneous Vinyl Tile

**Wear Layer Thickness:** 32 mil wear layer, 0.120" (3mm) overall thickness

**Standard Emboss:** Tick (TK)

**Edge Treatment:** Square Edge (SE)

**Protection:** Techtonic

**Wear Warranty:** 25 year

**See Adhesives** pg. 574





## EXOTIC WOOD

CONTOUR SERIES - WOOD



PCEX 3310 QUEENSLAND WALNUT



PCEX 3310  
QUEENSLAND WALNUT

**Sizes / Installation Method:**

4x36, 6x36, 6x48: Herringbone, Unidirectional

**Sample Size:** 6x6, 6x36

**Construction:** Heterogeneous Vinyl Tile

**Wear Layer Thickness:** 32 mil wear layer, 0.120" (3mm) overall thickness

**Standard Emboss:** Tick (TK)

**Edge Treatment:** Square Edge (SE)

**Protection:** Technonic

**Wear Warranty:** 25 year

**See Adhesives** pg. 574



## EXOTIC WOOD

CONTOUR SERIES - WOOD



PCEX 3311 HAWAIIAN TEAK, PCEX 3324 WASHED TEAK  
(CUSTOM SIZE AND INSTALLATION)



PCEX 3311  
HAWAIIAN TEAK



PCEX 3324  
WASHED TEAK



PCEX 3312  
GOLDEN TEAK

### Sizes / Installation Method:

4x36, 6x36, 6x48: Herringbone, Unidirectional

**Sample Size:** 6x6, 6x36

**Construction:** Heterogeneous Vinyl Tile

**Wear Layer Thickness:** 32 mil wear layer, 0.120" (3mm) overall thickness

**Standard Emboss:** Tick (TK)

**Edge Treatment:** Square Edge (SE)

**Protection:** Techtonic

**Wear Warranty:** 25 year

**See Adhesives** pg. 574



## EXOTIC WOOD

CONTOUR SERIES - WOOD



PCEX 3314 BROWN STRATA



PCEX 3314  
BROWN STRATA

**Sizes / Installation Method:**

4x36, 6x36, 6x48: Herringbone, Unidirectional

**Sample Size:** 6x6, 6x36

**Construction:** Heterogeneous Vinyl Tile

**Wear Layer Thickness:** 32 mil wear layer, 0.120" (3mm) overall thickness

**Standard Emboss:** Rough Grain (RG)

**Edge Treatment:** Square Edge (SE)

**Protection:** Techtonic

**Wear Warranty:** 25 year

**See Adhesives** pg. 574



## EXOTIC WOOD

CONTOUR SERIES - WOOD



PCEX 3625 CRESTWOOD



PCEX 3625  
CRESTWOOD

**Sizes / Installation Method:**

4x36, 6x36, 6x48: Herringbone, Unidirectional

**Sample Size:** 6x6, 6x36

**Construction:** Heterogeneous Vinyl Tile

**Wear Layer Thickness:** 32 mil wear layer, 0.120" (3mm) overall thickness

**Standard Emboss:** Tick (TK)

**Edge Treatment:** Square Edge (SE)

**Protection:** Techtonic

**Wear Warranty:** 25 year

**See Adhesives** pg. 574



## EXOTIC WOOD

CONTOUR SERIES - WOOD



PCEX 3901 KOA



PCEX 3901  
KOA

**Sizes / Installation Method:**

4x36, 6x36, 6x48: Herringbone, Unidirectional

**Sample Size:** 6x6, 6x36

**Construction:** Heterogeneous Vinyl Tile

**Wear Layer Thickness:** 32 mil wear layer, 0.120" (3mm) overall thickness

**Standard Emboss:** Tick (TK)

**Edge Treatment:** Square Edge (SE)

**Protection:** Technic

**Wear Warranty:** 25 year

**See Adhesives** pg. 574

## GRAND ASH

CONTOUR SERIES - WOOD



PCGA 3634 BRISTOL  
(CUSTOM CUT AND CUSTOM INSTALLATION)



PCGA 3632  
NATCHEZ



PCGA 3634  
BRISTOL



PCGA 3635  
SAFFRON

### Sizes / Installation Method:

4x36, 6x36, 6x48: Herringbone, Unidirectional

**Sample Size:** 6x6, 6x36

**Construction:** Heterogeneous Vinyl Tile

**Wear Layer Thickness:** 32 mil wear layer, 0.120" (3mm) overall thickness

**Standard Emboss:** Rough Grain (RG)

**Edge Treatment:** Square Edge (SE)

**Protection:** Technonic

**Wear Warranty:** 25 year

**See Adhesives** pg. 574



## MODERN WOOD

CONTOUR SERIES - WOOD



PCMD 0361 NEWBORN



PCMD 0361  
NEWBORN

**Sizes / Installation Method:**

4x36, 6x36, 6x48: Herringbone, Unidirectional

**Sample Size:** 6x6, 6x36

**Construction:** Heterogeneous Vinyl Tile

**Wear Layer Thickness:** 32 mil wear layer, 0.120" (3mm) overall thickness

**Standard Emboss:** Natural Grain (NG)

**Edge Treatment:** Square Edge (SE)

**Protection:** Techtonic

**Wear Warranty:** 25 year

**See Adhesives** pg. 574



## MODERN WOOD

CONTOUR SERIES - WOOD



PCMD 3306  
CANADIAN MAPLE

PCMD 3306 CANADIAN MAPLE  
(CUSTOM CUT AND CUSTOM INSTALLATION)

**Sizes / Installation Method:**

4x36, 6x36, 6x48: Herringbone, Unidirectional

**Sample Size:** 6x6, 6x36

**Construction:** Heterogeneous Vinyl Tile

**Wear Layer Thickness:** 32 mil wear layer, 0.120" (3mm) overall thickness

**Standard Emboss:** Natural Grain (NG)

**Edge Treatment:** Square Edge (SE)

**Protection:** Techtonic

**Wear Warranty:** 25 year

**See Adhesives** pg. 574



## MODERN WOOD

CONTOUR SERIES - WOOD



PCMD 3104 ATLANTIC CHERRY



PCMD 3104  
ATLANTIC CHERRY

**Sizes / Installation Method:**

4x36, 6x36, 6x48: Herringbone, Unidirectional

**Sample Size:** 6x6, 6x36

**Construction:** Heterogeneous Vinyl Tile

**Wear Layer Thickness:** 32 mil wear layer, 0.120" (3mm) overall thickness

**Standard Emboss:** Tick (TK)

**Edge Treatment:** Square Edge (SE)

**Protection:** Techtonic

**Wear Warranty:** 25 year

**See Adhesives** pg. 574

## MODERN WOOD

CONTOUR SERIES - WOOD



**PCMD 3604 WHISPER**  
(CUSTOM CUT AND CUSTOM INSTALLATION)



**PCMD 3604**  
**WHISPER**



**PCMD 3606**  
**WILLOW**



**PCMD 3602**  
**THISTLE**



**PCMD 3610**  
**BRANCH**

### Sizes / Installation Method:

4x36, 6x36, 6x48: Herringbone, Unidirectional

**Sample Size:** 6x6, 6x36

**Construction:** Heterogeneous Vinyl Tile

**Wear Layer Thickness:** 32 mil wear layer, 0.120" (3mm) overall thickness

**Standard Emboss:** Tick (TK)

**Edge Treatment:** Square Edge (SE)

**Protection:** Techtonic

**Wear Warranty:** 25 year

**See Adhesives** pg. 574



## MODERN WOOD

CONTOUR SERIES - WOOD



PCMD 3732  
LOFT OAK

PCMD 3732 LOFT OAK  
(CUSTOM INSTALLATION)

**Sizes / Installation Method:**

4x36, 6x36, 6x48: Herringbone, Unidirectional

**Sample Size:** 6x6, 6x36

**Construction:** Heterogeneous Vinyl Tile

**Wear Layer Thickness:** 32 mil wear layer, 0.120" (3mm) overall thickness

**Standard Emboss:** Tick (TK)

**Edge Treatment:** Square Edge (SE)

**Protection:** Techtonic

**Wear Warranty:** 25 year

**See Adhesives** pg. 574



## MODERN WOOD

CONTOUR DIGITAL LIBRARY



PCMD 3821 MISSION BAY



PCMD 3820  
CRESCENT PARK



PCMD 3821  
MISSION BAY



PCMD 3822  
SEAHOLM

### Sizes / Installation Method:

4x36, 6x36, 6x48: Herringbone, Unidirectional

**Sample Size:** 6x6, 6x36

**Construction:** Heterogeneous Vinyl Tile, Digitally Printed

**Wear Layer Thickness:** 32 mil wear layer, 0.120" (3mm) overall thickness

**Standard Emboss:** Rough Grain (RG)

**Edge Treatment:** Square Edge (SE)

**Protection:** Techtonic

**Wear Warranty:** 25 year

**See Adhesives** pg. 574



## MODERN WOOD

CONTOUR DIGITAL LIBRARY



PCMD 3824 OAKHURST



PCMD 3824  
OAKHURST



PCMD 3825  
HIGHLAND OAK

### Sizes / Installation Method:

4x36, 6x36, 6x48: Herringbone, Unidirectional

**Sample Size:** 6x6, 6x36

**Construction:** Heterogeneous Vinyl Tile, Digitally Printed

**Wear Layer Thickness:** 32 mil wear layer, 0.120" (3mm) overall thickness

**Standard Emboss:** Rough Grain (RG)

**Edge Treatment:** Straight Edge (SE)

**Protection:** Techtonic

**Wear Warranty:** 25 year

**See Adhesives** pg. 574



## NUGRAIN

CONTOUR SERIES - WOOD



PCNU 3712 STERLING



PCNU 3710  
GUNMETAL



PCNU 3712  
STERLING



PCNU 3715  
STEEL



PCNU 3717  
PRIMA

### Sizes / Installation Method:

4x36, 6x36, 6x48: Herringbone, Unidirectional

**Sample Size:** 6x6, 6x36

**Construction:** Heterogeneous Vinyl Tile

**Wear Layer Thickness:** 32 mil wear layer, 0.120" (3mm) overall thickness

**Standard Emboss:** Tick (TK)

**Edge Treatment:** Square Edge (SE)

**Protection:** Techtonic

**Wear Warranty:** 25 year

**See Adhesives** pg. 574



## SPALTED

MORE THAN WOOD COLLECTION | CONTOUR DIGITAL LIBRARY



PCSP 4523 SUNBLEACHED



PCSP 4523  
SUNBLEACHED



PCSP 4524  
CANDLELIGHT



PCSP 4525  
MARFIL

### Sizes / Installation Method:

6x36, 6x48, 7.2x48: Herringbone, Unidirectional

9x36: Vertical Ashlar

**Sample Size:** 6x6, 6x36

**Construction:** Heterogeneous Vinyl Tile, Digitally Printed

**Wear Layer Thickness:** 32 mil wear layer, 0.120" (3mm) overall thickness

**Standard Emboss:** Natural Grain (NG)

**Edge Treatment:** Square Edge (SE)

**Protection:** Techtonic

**Wear Warranty:** 25 year

**See Adhesives** pg. 574



## TOWNHALL

MORE THAN WOOD COLLECTION | CONTOUR DIGITAL LIBRARY



PCTH 4507 LISBON HALL



PCTH 4506  
BRITON HALL



PCTH 4507  
LISBON HALL

### Sizes / Installation Method:

4x36, 6x36, 6x48, 7.2x48: Herringbone, Unidirectional

**Sample Size:** 6x6, 6x36

**Construction:** Heterogeneous Vinyl Tile, Digitally Printed

**Wear Layer Thickness:** 32 mil wear layer, 0.120" (3mm) overall thickness

**Standard Emboss:** Rough Grain (RG)

**Edge Treatment:** Square Edge (SE)

**Protection:** Techtonic

**Wear Warranty:** 25 year

**See Adhesives** pg. 574



## WILDWOOD

INDIGENOUS EARTH COLLECTION | CONTOUR DIGITAL LIBRARY



PCWD 4210 SYCAMORE



PCWD 4200  
CEDAR



PCWD 4206  
RAINWASHED



PCWD 4210  
SYCAMORE

### Sizes / Installation Method:

6x36, 7.2x48: Herringbone, Unidirectional

12x36: Vertical Ashlar

**Sample Size:** 6x6, 6x36

**Construction:** Heterogeneous Vinyl Tile, Digitally Printed

**Wear Layer Thickness:** 32 mil wear layer, 0.120" (3mm) overall thickness

**Standard Emboss:** Rough Grain (RG)

**Edge Treatment:** Square Edge (SE)

**Protection:** Techtonic

**Wear Warranty:** 25 year

**See Adhesives** pg. 574





## iD LATITUDE ABSTRACTS



PLSM 5102 NIMBUS



PLCZ 7569  
ZINNIA



PLCZ 7557  
AFTERGLOW



PLCZ 7556  
COASTLINE



PLCZ 7567  
GULFSTREAM



PLCZ 7558  
SUNSET



PLCZ 7568  
PARADISE

### Sizes / Installation Method:

6x36: Herringbone, Unidirectional

18x18: Horizontal Ashlar, Quarter Turn, Vertical Ashlar

**Sample Size:** 6x6, 6x36

**Construction:** Heterogeneous Vinyl Tile

**Wear Layer Thickness:** 20 mil wear layer, 0.120" (3mm) overall thickness

**Standard Emboss:** Linear Wood (LW)

**Edge Treatment:** Square Edge (SE)

**Protection:** Techtonic

**Wear Warranty:** 20 year



## iD LATITUDE ABSTRACTS



**PLCZ 7554**  
WATERMIST



**PLCZ 7553**  
ROYALE



**PLCZ 7559**  
STAR CROSSED



**PLCZ 7555**  
KINGSTON



**PLCZ 7551**  
PALACE



**PLCZ 7552**  
NIGHTFALL



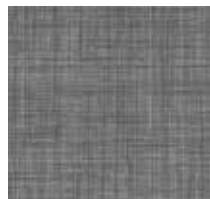
**PLCZ 7570**  
BLOSSOM



**PLCZ 7563**  
VILLA WHITE



**PLCZ 7565**  
LANDMARK



**PLCZ 7560**  
OVERCAST



**PLCZ 7562**  
WINDFRESH



**PLCZ 7564**  
BARLEY



**PLCZ 7566**  
HARBOR



**PLCZ 7561**  
VAPOR



**PLSM 5102**  
NIMBUS



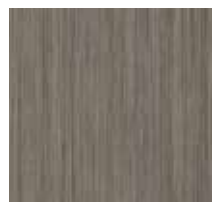
**PLFL 5101**  
BISQUE



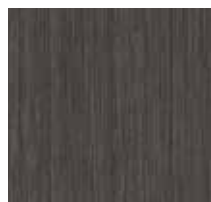
**PLFL 5103**  
GREIGE



**PLFL 5110**  
TAUPE



**PLTG 3542**  
COOL BEIGE



**PLTG 3545**  
CHARCOAL

## iD LATITUDE STONE



PLST 7545 ARCTIC SKY

**Sizes / Installation Method:**

18x18: Horizontal Ashlar, Quarter Turn, Vertical Ashlar

**Sample Size:** 6x6, 18x18

**Construction:** Heterogeneous Vinyl Tile

**Wear Layer Thickness:** 20 mil wear layer, 0.120" (3mm) overall thickness

**Standard Emboss:** Quarry (QU)

**Edge Treatment:** Square Edge (SE)

**Protection:** Techtonic

**Wear Warranty:** 20 year





## iD LATITUDE STONE



**PLST 7235**  
CRISTALLO



**PLCN 3515**  
ALUMIN



**PLST 7244**  
PRAIRIE



**PLST 7547**  
CHATEAU



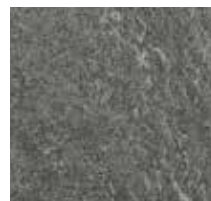
**PLST 7214**  
LUNA



**PLCN 3511**  
GYPSUM



**PLST 7549**  
WEATHERED GLAZE



**PLST 7546**  
EVENING SHADOW



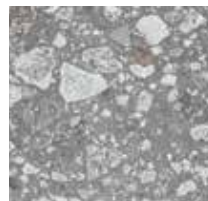
**PLST 7501**  
ELBRUS



**PLST 7544**  
LUNAR ROCK



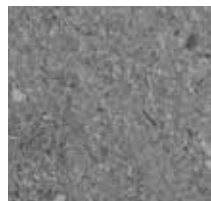
**PLST 7548**  
IRON PATINA



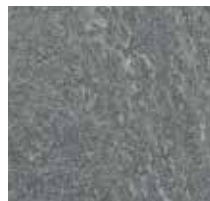
**PLST 7543**  
LAVA STONE



**PLST 7242**  
HEARTHSTONE



**PLST 7550**  
GEMSTONE



**PLST 7545**  
ARCTIC SKY



**PLCN 3519**  
CHARCOAL

## iD LATITUDE WOOD



PLWD 7533 NORDIC



PLWD 3523  
LAUREL OAK



PLWD 7539  
GOLDEN OAK



PLWD 7526  
PEARL MAPLE



PLWD 7533  
NORDIC



PLWD 3305  
AMERICAN CHERRY



PLWD 3308  
ASH

### Sizes / Installation Method:

6x48: Herringbone, Unidirectional

**Sample Size:** 6x6, 6x24

**Construction:** Heterogeneous Vinyl Tile

**Wear Layer Thickness:** 20 mil wear layer, 0.120" (3mm) overall thickness

**Standard Emboss:** Weathered Wood (WW)

**Edge Treatment:** Square Edge (SE)

**Protection:** Techtonic

**Wear Warranty:** 20 year



## iD LATITUDE WOOD



PLWD 3401  
BLACK WALNUT



PLWD 7534  
MOUNTAIN MAPLE



PLWD 7542  
HAZELWOOD



PLWD 7531  
CHANDLER OAK



PLWD 7537  
ENGLISH WALNUT



PLWD 7541  
PARABLE



PLWD 7524  
NATURAL TEAK



PLWD 3307  
EUROPEAN CHERRY



PLWD 3405  
HICKORY



PLWD 7538  
AUTUMN WALNUT



PLWD 3522  
CRÈME OAK



PLWD 7532  
LACEWOOD



PLWD 3606  
CHAMOIS OAK



PLWD 5134  
BLANCHED PINE



PLWD 7536  
BUTTERNUT



PLWD 5136  
ACADIA PINE



PLWD 7535  
SILVER MAPLE



PLWD 3605  
TAOS OAK



PLWD 3530  
VINTAGE OAK



PLWD 7530  
GENEVA



PLCG 7514  
GILBRALTER



PLWD 7523  
SUNTONED TEAK



PLWD 7540  
MILLENNIUM OAK



PLWD 3603  
URBAN OAK



## EVEN PLANE



EVEN PLANE PNA 8818 CEMENT CHEVRON MEDIUM GREY; THREADCRAFT 60807 WARM CASHMERE

## EVEN PLANE

### WOOD



**PNP 8705**  
ENGLISH OAK BEIGE



**PNP 8706**  
ENGLISH OAK BLACK



**PNP 8707**  
ENGLISH OAK DARK GREIGE



**PNP 8708**  
ENGLISH OAK WARM GREIGE



**PNP 8709**  
ENGLISH OAK MEDIUM GREY



**PNP 8710**  
WALNUT ALLOVER WALNUT



**PNP 8712**  
MINIMAL WOOD NATURAL



**PNP 8713**  
MINIMAL WOOD GREY



**PNP 8714**  
MINIMAL WOOD DARK GREY



**PNP 8715**  
CITIZEN OAK NATURAL

#### Sizes / Installation Method:

9.84x39.3: Herringbone, Unidirectional

**Sample Size:** 9.84x19.65

**Construction:** Heterogeneous Vinyl Tile

**Wear Layer Thickness:** 32 mil wear layer, 0.120" (4.5mm) overall thickness

**Standard Emboss:** Standard

**Edge Treatment:** Square Edge (SE)

**Protection:** Techtonic

**Wear Warranty:** 25 year

**See Adhesives** pg. 574

## EVEN PLANE

### STONE



**PNS 8700**  
MARBLE PULPIS GOLDEN BLACK



**PNS 8701**  
MARBLE PULPIS GREY



**PNS 8702**  
CEMENT DARK GREY



**PNS 8703**  
CEMENT LIGHT GREY



**PNS 8704**  
CEMENT MEDIUM GREY

#### Sizes / Installation Method:

26.2x26.2: Vertical Ashlar, Horizontal Ashlar, Quarter Turn

Cement: 19.6"x19.6": Vertical Ashlar, Horizontal Ashlar, Quarter Turn

**Sample Size:** Marble: 26.2x26.2, Cement: 19.6x19.6

**Construction:** Heterogeneous Vinyl Tile

**Wear Layer Thickness:** 32 mil wear layer, 0.120" (4.5mm) overall thickness

**Standard Emboss:** Standard

**Edge Treatment:** Square Edge (SE)

**Protection:** Techtonic

**Wear Warranty:** 25 year

**See Adhesives** pg. 574

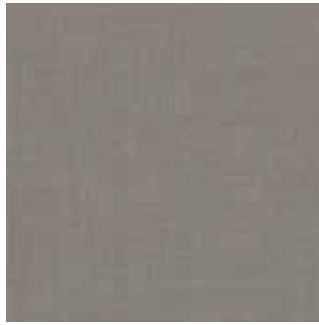


## EVEN PLANE

ABSTRACT



**PNA 8816**  
TISSE MEDIUM GREY



**PNA 8817**  
TISSE CHOCOLATE



**PNA 8818**  
CEMENT CHEVRON MEDIUM GREY

### Sizes / Installation Method:

Tisse: 19.6x19.6: Vertical Ashlar, Horizontal Ashlar, Quarter Turn

Cement: 9.84x39.3: Vertical Ashlar, Horizontal Ashlar

**Sample Size:** Tisse: 19.6x19.6, Cement: 9.84x19.65

**Construction:** Heterogeneous Vinyl Tile

**Wear Layer Thickness:** 32 mil wear layer, 0.120" (4.5mm) overall thickness

**Standard Emboss:** Standard

**Edge Treatment:** Square Edge (SE)

**Protection:** Techtonic

**Wear Warranty:** 25 year

**See Adhesives** pg. 574

## ANGLEFIT RUBBER STAIR TREADS



## ANGLEFIT RUBBER STAIR TREADS

True flooring solutions improve every aspect of the experience, from aesthetics to safety and installation to maintenance. So Tarkett has made significant improvements to the design of our rubber stair treads that will minimize the time and cost of installation. Our new AngleFit angled noses are available on all rubber treads—with or without risers—making every installation faster, easier and safer.

### One step at a time

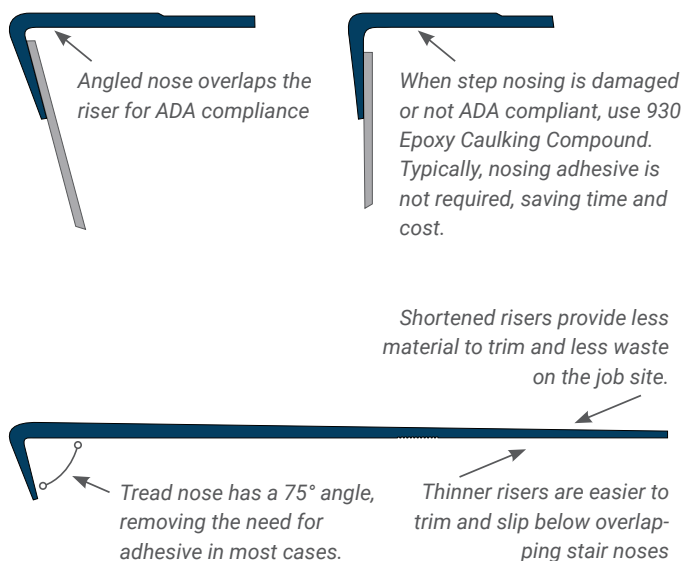
The right stairwell management system improves both the safety and appearance of these critical spaces, helping reduce risk and improve mobility from top to bottom. With thousands of possible combinations, Tarkett's comprehensive stairwell management system provides no shortage of options. Choose between rubber and vinyl constructions to balance the needs of every project.

**STAIR NOSE:** New angled stair nose returns to the step, allowing it to overlap the riser in most cases, and eliminate time-consuming cuts.

**NO CAULK:** If stair noses are in good condition and the nose edge does not exceed 1/2" radius, no nose caulk is required.

**EASY RISER:** The riser's thickness is reduced at the top, allowing it to slip easily below the stair nose.

**SAFETY:** Slip-resistant rubber treads are available in a variety of colors, textures and safety inserts for the visually impaired.





# ANGLEFIT RUBBER STAIR TREADS W/INTEGRATED RISER

## STAIRWELL MANAGEMENT

### RUBBER TREAD WITH INTEGRATED RISER



**RAISED ROUND TREAD/RISER**  
(RNSQTR)



**RAISED SQUARE TREAD/RISER**  
(RNRDTR)



**HAMMERED TREAD/RISER**  
(HNTR)



**BAMBOO TREAD/RISER**  
(BMNTR)



**CUBIS TREAD/RISER**  
(CUBTR)



**FAST LANE TREAD/RISER**  
(CFLNTR)



**DIAMOND TREAD/RISER**  
(CNNTR)



**RICE PAPER TREAD/RISER**  
(FRPANTR)



### RUBBER TREAD WITH INTEGRATED RISER FOR THE VISUALLY IMPAIRED



**RAISED ROUND TREAD/RISER VISUALLY IMPAIRED**  
(VIRNRDTR)



**RAISED SQUARE TREAD/RISER VISUALLY IMPAIRED**  
(VIRNSQTR)



**HAMMERED TREAD/RISER VISUALLY IMPAIRED**  
(VIHNTR)



**BAMBOO TREAD/RISER VISUALLY IMPAIRED**  
(VIBMNTR)



**CUBIS TREAD/RISER VISUALLY IMPAIRED**  
(VICUBTR)



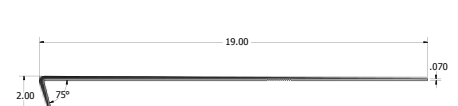
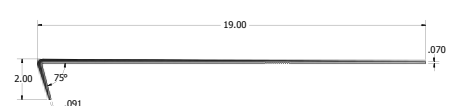
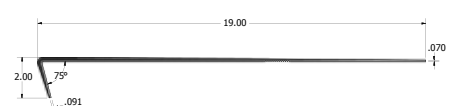
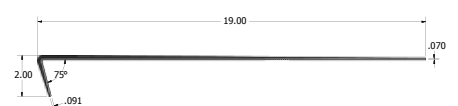
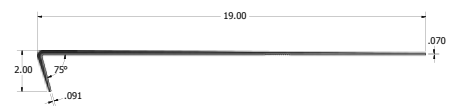
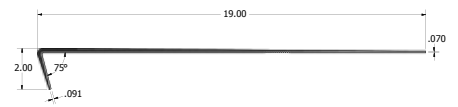
**FAST LANE TREAD/RISER VISUALLY IMPAIRED**  
(VICFLNTR)



**DIAMOND TREAD/RISER VISUALLY IMPAIRED**  
(VICNTR)



**Rice Paper Tread/Riser Visually Impaired**  
(VIFRPANTR)



## ANGLEFIT RUBBER STAIR TREADS

STAIRWELL MANAGEMENT

### AngleFit Stair Treads Textures



RAISED ROUND



RAISED SQUARE



HAMMERED



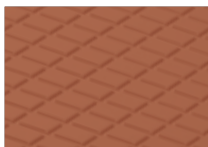
BAMBOO



CUBIS



FAST LANE



DIAMOND



RICE PAPER



SMOOTH

#### GRIT TAPE COLOR



Black



Brown



Grey



Tan



Yellow



White

**BLACK:** Grit tape contrasts with colors 01, 21, 23, 24, 27, 28, 29, 31, 32, 38, 48, 55, 58, 62, 71, 77, 84, 107, 121, 129, 150, 151, 163, 176, 178, 179, 197, 199, 262, 280, 281, 282, VE5, VE7, VF2, VF3, VF4, VF6, VF7, VF8, VG5, VG6, VH2, VH4, VH5, VH6, VH7, VJ5, VJ6, VJ7, VJ8, VK3, VK7, VK8, VL1, VL2, VL4, VM1, VM4, VM5, VM8, VN1, VN3, TA1, TA5, TA8, TG2, TG3, TG5, TG6, TG7, TG8, TH1

**BROWN:** 09, 11, 22, 34, 45, 49, 68, 79, 80, 130, 194, 461, 469, VE1, VE2, VE3, VE6, VE8, VE9, VF1, TA3

**GREY:** 08, 18, 20, 40, 50, 72, 85, 86, 92, 168, 460, VF5, VG1, VG2, VG3, VG4, VG7, VG8, VG9, VH1, VH3, VH8, VH9, VJ2, VJ3, VJ9, VK1, VK2, VK4, VK5, TB3, TB6, TG1, TG4, WGD

**TAN:** 44, 47, 63, 66, 76, 101, 132, 167, 264, 283, 284, VE4, VF9, VJ1, VJ4, TA2, TA7, TB2, TG9, TH2, TH3

**YELLOW:** TA4, TA6, TA9, TB1, TB4

**WHITE** Grit Tape available by special order

**PHOTOLUMINESCENT**  
Tape available

#### SOLID COLOR RUBBER INSERT



**40** Black



**47** Brown



**49** Beige



**55** Silver Grey



**85** Burgundy



**TG7** Canary

**40 BLACK:** Insert contrasts with colors 01, 21, 23, 24, 27, 28, 29, 31, 32, 38, 48, 55, 58, 62, 67, 69, 71, 77, 84, 107, 121, 129, 150, 151, 163, 176, 178, 179, 197, 199, 262, 280, 281, 282, VE5, VE7, VF2, VF3, VF4, VF6, VF7, VF8, VG5, VG6, VH2, VH4, VH5, VH6, VH7, VJ5, VJ6, VJ7, VJ8, VK3, VK7, VK8, VL1, VL2, VL4, VM1, VM4, VM5, VM8, VN1, VN3, TA1, TA5, TA8, TB3, TG2, TG3, TG5, TG6, TG7, TG8, TH1

**47 BROWN:** 09, 11, 22, 34, 45, 49, 68, 79, 80, 130, 194, 461, 469, VE1, VE2, VE3, VE6, VE8, VE9, VF1, TA3

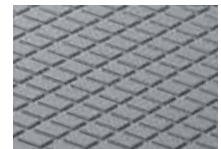
**55 Silver Grey:** 08, 18, 20, 40, 50, 72, 82, 85, 86, 92, 168, 460, VF5, VG1, VG2, VG3, VG4, VG7, VG8, VG9, VH1, VH3, VH8, VH9, VJ2, VJ3, VJ9, VK1, VK2, VK4, VK5, VL7, VL8, VL9, VM2, VM3, VN2, VN5, TB3, TB6, TG1, WGD

**49 Beige:** 44, 47, 63, 76, 101, 132, 167, 264, 283, 284, VE4, VF9, VJ1, VJ4, TA2, TA7, TB2, TG9, TH2, TH3

**TG7 Canary:** TA4, TA6, TA9, TB1, TB4



Smooth (C)



Diamond (CN)

#### LANDING TILE

All tiles available in 24" x 24". Smooth is also available in 12" x 12". All tile textures can be used as landing tile.

#### COLOR PALETTE AVAILABILITY

- = Available in Solid Color Palette
- = Color Splash colorways
- = Can be special ordered in Prima Marbleized and Prima Olio colorways. Visit [tarkett.com](http://tarkett.com). Minimums may apply
- = Can be special ordered in Speckled colorways.

#### Stair Tread Insert Color Combinations

- = See chart on the left for recommended contrasting color combinations.

#### Sizes/Available Lengths

- = 3'<sup>Δ</sup>, 3.5'<sup>Δ</sup>, 4', 4.5', 5', 6'
- = 3'<sup>Δ</sup>, 3.5'<sup>Δ</sup>, 4', 4.5', 5', 6', 7', 8'
- = 3'<sup>Δ</sup>, 3.5'<sup>Δ</sup>, 4', 4.5', 5', 6', 7', 8', 9'

<sup>Δ</sup> Denotes special order.

#### Indoor Air Quality

Low Emitting materials EQ 4.3  
FloorScore® certified and meets CA 01350



# ANGLEFIT RUBBER STAIR TREADS W/OUT INTEGRATED RISER

STAIRWELL MANAGEMENT

## STANDARD RUBBER TREADS



**BAMBOO TREAD**  
SQ. NOSE (BMNT),  
RD. NOSE (BMT)



**CUBIS TREAD**  
SQ. NOSE (CUBT),  
RD. NOSE (CUT)



**FAST LANE TREAD**  
SQ. NOSE (CFLNT),  
RD. NOSE (CFLT)



**RAISED ROUND TREAD**  
(RNRD)



**RAISED SQUARE TREAD**  
(RNSQ)



**HAMMERED TREAD**  
(HMNT) 12 1/4" DEEP (HMNTD), 14" DEEP



**Service Weight Smooth Tread**  
(SN)



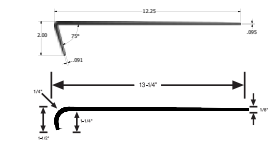
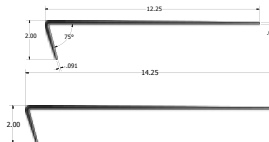
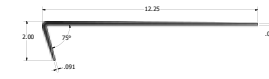
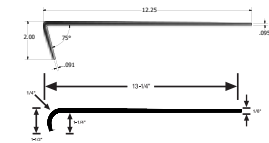
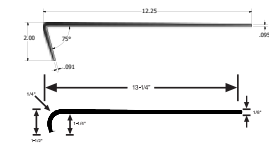
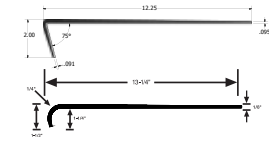
**Diamond Tread**  
(CNN)



**Rice Paper Tread**  
SQ. NOSE (FRPANT),  
RD. NOSE (FRPAT)



**Service Weight Safe-T-Grip Tread**  
(SAN)



## STANDARD RUBBER TREADS FOR THE VISUALLY IMPAIRED



**BAMBOO TREAD**  
VISUALLY IMPAIRED (VIBMNT)



**CUBIS TREAD**  
VISUALLY IMPAIRED (VICUBT)



**FAST LANE TREAD**  
VISUALLY IMPAIRED (VICFLNT)



**RAISED ROUND TREAD**  
WITHOUT RISER VISUALLY IMPAIRED (VIRNRD)



**RAISED SQUARE TREAD**  
WITHOUT RISER VISUALLY IMPAIRED (VIRSQ)



**HAMMERED TREAD WITHOUT RISER**  
VISUALLY IMPAIRED (VIHMNT) 12 1/4" DEEP  
(VIHMNTD) 14" DEEP



**Service Weight Smooth Tread**  
Visually Impaired (VISN)



**Diamond Tread**  
Visually Impaired (VICNN)



**Rice Paper Tread**  
Visually Impaired (VIFRPANT)



Color Palette Availability Key located on the previous page.



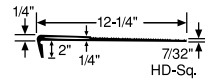
# VINYL STAIR TREADS

STAIRWELL MANAGEMENT

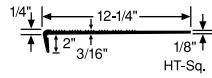
## VINYL TREADS



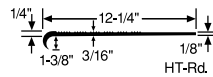
**HEAVY DUTY SQUARE NOSE**  
(HD)



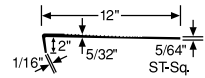
**SAFE-T-RIB® SQUARE NOSE**  
(HT)



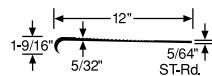
**SAFE-T-RIB ROUND NOSE**  
(HT)



**SERVICE WEIGHT SQUARE NOSE**  
(ST)



**SERVICE WEIGHT ROUND NOSE**  
(ST)



**HEAVY DUTY (HD)**



**SAFE-T-RIB® (HT)**



**SERVICE WEIGHT (ST)**

### GRIT TAPE COLOR +



Black



Brown



Grey



Tan



Yellow



White

**BLACK:** Grit Tape contrasts with colors 01, 21, 24, 28, 29, 31, 32, 38, 48, 55, 71, TA4, TA6, TB1

**BROWN:** Grit Tape contrasts with colors 09, 11, 22, 45, 49, 80, TA8

**GREY:** Grit Tape contrasts with colors 08, 18, 20, 40, 86

**TAN:** Grit Tape contrasts with colors 44, 47, 63, 76, 167, 283

**YELLOW:** Grit Tape available by special order

**WHITE:** Grit Tape available by special order

### CO-EXTRUDED VINYL INSERT X



**40 Black**



**47 Brown**



**49 Beige**



**55 Silver Grey**

**40 BLACK:** Insert contrasts with colors 01, 21, 24, 28, 29, 31, 32, 38, 48, 55, 71, TA4, TA6, TB1

**47 BROWN:** Insert contrasts with colors 09, 11, 22, 45, 49, 80, TA8

**49 Beige:** Insert contrasts with colors 44, 47, 63, 76, 167, 283

**55 Silver Grey:** Insert contrasts with colors 18, 20, 40, 86

### COLOR PALETTE AVAILABILITY

Stair Tread Insert Color Combinations

**+** = See chart on the left for recommended contrasting color combinations.

**X** = See chart on the left for recommended contrasting color combinations.

**C** = Johnsonite ColorMatch Color Offering

**▲** = Can be specially ordered in Prima Marbleized and Prima Olio colorways. Visit [tarkett.com](http://tarkett.com). Minimums may apply.

Sizes/Available Lengths

**W** = 3', 3.5', 4', 6', 8', 12'

## VINYL TREADS FOR THE VISUALLY IMPAIRED



**HEAVY DUTY SQUARE NOSE VISUALLY IMPAIRED**  
(VIHD)



**SAFE-T-RIB SQUARE NOSE VISUALLY IMPAIRED**  
(VIHT)



**SAFE-T-RIB ROUND NOSE VISUALLY IMPAIRED**  
(VIHT)



**SAFE-T-GRIP SQUARE NOSE VISUALLY IMPAIRED**  
(VIVG)



## SPECIALTY APPLICATIONS & ACCESSORIES



Smooth (C)



### RUBBER LANDING TILE

#### FOR USE WITH VINYL STAIR TREADS

All tiles available in 24" x 24". Smooth is also available in 12" x 12". All tile textures can be used as landing tile.



# BASEWORKS THERMOSET RUBBER WALL BASE

A natural fusion of aesthetics, performance and sustainability, BaseWorks rubber wall base delivers pure, uniform color and an attractive matte finish. Its flexibility makes installation quick, easy and inexpensive. Plus, it won't fade, crack or separate from the wall.

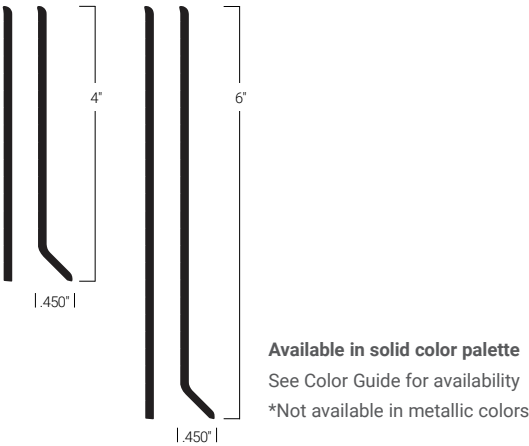


	TV Thermoplastic Vinyl*	TP Thermoplastic Rubber	TS Thermoset Rubber*
Ortho-phthalate free	✓	✓	✓
Bio-Based Content			✓
100% Recyclable	✓	✓	✓
10%+ Recycled Content	✓	✓	
Cradle to Cradle Certified® Silver			✓
ColorMatch	✓	✓	✓
No Dye Lots	✓	✓	✓

\*Not available in Metallics

## Tarkett Wall Bases. Tie it together.

The connecting space between wall and floor presents an opportunity to add color, pattern, clean lines, lasting protection – or all of the above. With the most comprehensive collection of wall borders in the country, we make it easy to unify your space with the perfect finishing touch.



Thermoset rubber (type TS) 1/8" (3.175 mm)  
Standard heights available in toe or toeless  
4' sections and coils available  
Manufactured inside and outside corners available

**3 Standard Heights:**  
2.5" (64 mm),  
4" (102 mm) or  
6"(153 mm)  
**Recycled Content:** Pre-consumer 14%  
**See Adhesives** pg. 574



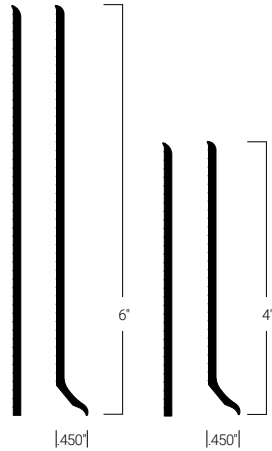
## TRADITIONAL WALL BASE SYSTEM

### Keep It Simple

We know there's a time and a place for straightforward, no-nonsense options. That's why our Traditional Wall Base is basic, but better. With durable construction and multiple options for height and color, our Traditional Wall Base has everything you need. And nothing you don't.



TRADITIONAL



Available in Dura-Cove Rubber (type TP)  
1/8" (3.175 mm) and vinyl (type TV)  
.080" (2 mm) or 1/8" (3.175 mm)

Standard heights available in toe or toeless

4' sections and coils available

Manufactured inside and outside corners available

4.5", 8", 9" and 10" heights are special order; contact your local Tarkett representative

4.5" in Dura-Cove only

#### 3 Standard Heights:

2.5" (64 mm),  
4" (102 mm) or  
6" (153 mm) or 4.5" (114 mm) in DC only

**Recycled Content:** Pre-consumer 14%

**See Adhesives** pg. 574





Johnsonite®

# Guide to Color

---

OUR SYSTEM MAKES IT EASY TO COORDINATE ACROSS  
FLOORING OPTIONS, FINISHING BORDERS AND ACCESSORIES.

The latest direction from the industry's color experts.

---

 **Tarkett**

# SOLID COLORS



08 Icicle W 24 Grey Haze WG 55 Silver Grey WG 32 Pebble WG



29 Moon Rock WG 48 Grey WG 20 Charcoal WG TA4 Gateway WG



21 Platinum CG 38 Pewter CG 28 Medium Grey CG 71 Storm Cloud CG



01 Snow White W 22 Pearl CB 31 Zephyr CB 80 Fawn CB



11 Canvas WB 49 Beige WB TA8 Welsh Castle CB 283 Toast



09 Clay WB 45 Sandalwood WB 76 Cinnamon 47 Brown



TB1 Peppercorn 167 Fudge 44 Dark Brown B 63 Burnt Umber B



86 Hunter Green 18 Navy Blue TA6 Bedrock CG 40 Black B



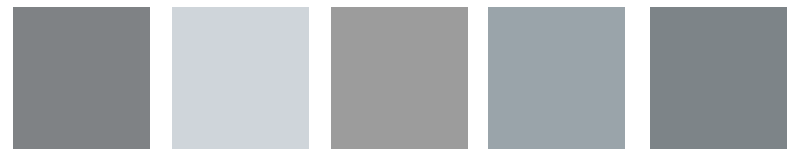
460 Cotton W 27 Mist WG TG5 Macadamia WG 150 Wetlands 50 White W



469 Mystify CG VN2 Stone Cottage WG 281 Grizzly CB VK7 Mt Rainier WG 199 Dockside WG



TG6 Mink WG 197 Shaded WG TB3 Dover CG 23 Vapor Grey CG TG2 Shark Fin CG



TG3 Iron Mountain CG VN1 White Slipper W TA5 Colonial Grey CG 262 Drizzle CG VL4 Cool Metal CG



TG1 Snowbound W VK8 Sandstorm CB VL2 Whispering Mist CB VL1 Harvest Time CB 121 Cement CB



TA3 Castaway CB 280 Shoreline 101 Seaweed 68 White Sand W 194 Antique White W



129 Silk WB 461 Wicker WB 79 Bone White W 34 Almond W TA1 Tannery



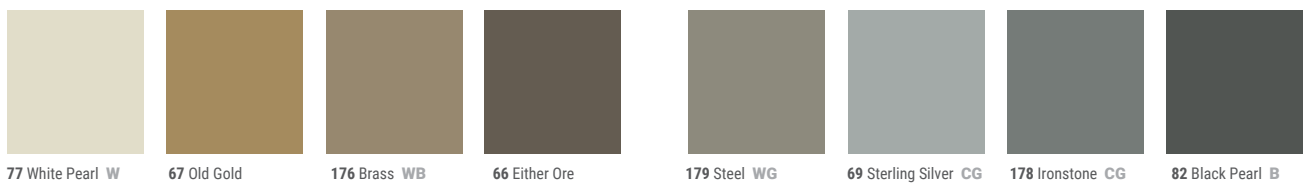
130 Sisal

COLORMATCH®

## SOLID COLORS



## METALLIC COLORS



Color plays a key role in interior design and the Tarkett Solution SPECTrum™. By coordinating all flooring and accessory solutions across a balanced, harmonized palette, we've combined simplicity with creative freedom to help you create beautiful, productive spaces.

The palette is organized with our Color Foundations system, which helps you coordinate colors across the entire Tarkett portfolio. There are hundreds of choices in six neutral palettes and one guarantee: you'll always have color coordinating options within each palette, now and into the future. Guaranteed.

Key: WB (Warm Beige), CB (Cool Beige), WG (Warm Grey), CG (Cool Grey), B (Black), W (White)

### Customization:

When you don't see the exact color you need, create it. We offer customized colors with quick lead times and low minimums. Contact your local Tarkett representative to get started.

### ColorMatch®:

This designer palette of leading colors is coordinated across multiple product categories with no dye lots... ever! Our rigorous manufacturing and quality standards enable you to confidently mix and match a color across all Johnsonite rubber flooring products, finishing borders and finishing accessories.



## COLOR AVAILABILITY CHART

Chart indicates standard availability across all traditional Johnsonite solutions.  
Don't see the color you want in the product you need? Just ask. Put our customization to the test.

COLOR PALETTES					
	JOHNSONITE SOLUTIONS	SOLID COLOR (Including ColorMatch®)	COLORMATCH ONLY	METALLICS	SPECIAL NOTES
WALL BASE SOLUTIONS	Duracove® and Rubber Wall Base	●		●	4" Traditional Toe standard in Masquerade®.
	Vinyl Wall Base	●			
	Baseworks® Thermoset Rubber Wall Base	●			
	Perceptions®	●		●	
	TightLock®	●		●	4.5" TightLock Carpet, 4.375" TightLock Resilient standard in Masquerade.
	Johnsonite Millwork® (including Corner Guard and Shoe Moulding)	●		●	
	Masquerade®				Standard in Millwork Profiles Oblique, Outline, Traditional, Silhouette, Reveal, Classic, Shoe Moulding and Quarter Round. Custom Digital Printing.
FLOOR FINISHING ACCESSORIES	Floor Finishing Accessories		●		
	Slim Line Transitions		●	●	
RUBBER FLOORING SOLUTIONS	Rubber Tile ( <i>All textures</i> )	●			Prima® Marbleized and Prima Olío® are special order.
	Color Splash Speckled Rubber Tile in 1/8" and 0.080" Tiles Triumph and Inertia® Rubber				Please refer to Tarkett Product Guide or <a href="http://tarkett.com">tarkett.com</a> for the standard Speckled colorway offerings. Or, expand your options by using the color guide to create your own unique speckled pattern.
	Mesto® Configurations Rubber Tile				Please refer to Tarkett Product Guide for the standard color offerings for Mesto Configurations rubber flooring. Custom colors by special request.
	Eco-Naturals® CorkTones® Rubber Tile		●		Custom colors with cork are available by special request.
	Defiant® Oil & Grease Resistant Rubber Tile				Please refer to Tarkett Product Guide for the standard color offerings for Defiant Oil & Grease Resistant rubber flooring.
STAIRWELL SOLUTIONS	Rubber Stair Treads	●			Some profiles available in Speckled tile colorways as standard. Custom colors, Prima Marbleized and Olío patterns and Mesto colorways by special request.
	Rubber Stringers and Risers	●			
	Vinyl Treads, Stringers, Risers & Nosings		●		
	Slim Line Nosings		●	●	
<b>How to order:</b> Specify Texture Code below Swatch-Color Number-Gauge. For example, to order Rice Paper in color 49 Beige in 1/8" gauge, specify: FRPA - 49 - 1/8".					

# ADHESIVES

FLOOR FINISHING

## RECOMMENDED ADHESIVE APPLICATION CHART

	CWL Cold Weld Liquid 100 Clear Thin Spread Adhesive RollSmart 901 SpraySmart Spray Adhesive 905 Releasable Adhesive 906 Conductive Adhesive 925 Resilient Flooring Adhesive 926 Vinyl Flooring Adhesive 930 Epoxy Caulking Compound 946 Premium Contact Adhesive 959 Vinyl Tile and Plank Adhesive 959 HM 960 Wall Base Adhesive 965 Flooring and Tread Adhesive 975 Two-Part Urethane Adhesive 986 Terra-Turf Adhesive 996 Two-Part Epoxy Adhesive C-EX Adhesives No Adhesives																			
Adhesives	Powertape	CWL	100	RollSmart	901	905	906	925	926	930	946	959	959HM	960	965	975	986	996	C-EX	No Adhesives
Contour				X								X	X			X		X		
Event				X								X	X			X		X		
iD Latitude				X								X	X			X		X		
Stair Treads - Rubber	X									X	X				X	X		X		
Stair Treads - Vinyl										X	X				X	X		X		
Vent-Cove Wall Base											X			X						
Wheeled Traffic Transition	X							X	X		X	X			X	X		X		



For years, Tarkett has raised the sustainability standards of our industry. We took the first steps and are determined to stay a step ahead.

And while inspirational words are great, we know impact is in the numbers — numbers subjected to intense third-party scrutiny. So, at Tarkett we don't just say it, **we prove it.**

These three values help us stay the course when it comes to sustainability.



## Setting New Transparency Standards

What you begin with affects everything that comes after it. That's why we subject our products to relentless scientific scrutiny and third-party testing and offer radical transparency about our materials and operations.



## Empowering the Next Step in the Value Chain

We make our business partners and customers more inherently sustainable with products and practices that consider every step in the value chain.



## Creating Healthier Futures

We base all our sustainability initiatives on our commitment to create healthier environments indoors and out, today and for generations to come.



# Sustainability Highlights

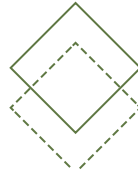
Feel confident in the numbers



A holistic approach you can count on...



...And certifications you can trust.



We're leaders in radical transparency.



Setting tomorrow's standards...



...For globally recognized excellence.

95%

of our raw materials are third-party assessed for their impact on human and environmental health based on Cradle to Cradle criteria.

70%

of raw materials are abundant, rapidly renewable or recycled.

14

zero-waste to landfill manufacturing plants.

2011

started working with EPEA to integrate Cradle to Cradle principles into every facet of our business.

2013

first commercial flooring **CERTIFIED asthma and allergy friendly®**.

2022

Powerbond RS is the first soft surface product in the industry to be **CERTIFIED asthma and allergy friendly®**.

100<sub>ppm</sub>

raw materials content revealed down to 100 parts per million.

When most manufacturers reveal raw materials content down to just 1,000 ppm, there's simply no contest.

We've been providing Material Health Statements since 2013 to give you peace of mind about the content of our products.

99%

of flooring solutions have low VOC emission levels — 10x lower than the most stringent world standards.

100%

ortho-phthalate-free vinyl production. First company to eliminate ortho-phthalates from all products.

2010

first flooring manufacturer to join the UN Global Compact.

2021

awarded the Gold medal by EcoVadis; now ranked among the top 2% of companies in our industry rated by EcoVadis.

2022

scored A-, the CDP management level, regarding the climate change performance assessment.

At Tarkett, social and environmental responsibility aren't add-ons. They're woven, stamped and sealed into everything we do. But more importantly, we don't just say this, **we prove it.**

---

**Tarkett North America**

30000 Aurora Rd  
Solon, OH 44139  
800.899.8916  
**tarkett.com**