

MSU is an affirmative-action, equal-opportunity employer. Michigan State University Extension programs and materials are open to all without regard to race, color, national origin, sex, gender, gender identity, religion, age, height, weight, disability, political beliefs, sexual orientation, marital status, family status or veteran status.

**“AND  
JUSTICE  
FOR ALL”**

In accordance with Federal law and U.S. Department of Agriculture (USDA) policy, this institution is prohibited from discriminating on the basis of race, color, national origin, sex, (in education and training programs and activities), age, disability, or retaliation. (Not all prohibited bases apply to all programs.) If you require the information on this poster in alternative format (Braille, large print, audiotape, etc.), contact the USDA National Center at (202) 720-2600 (voice or TDD).

If you require information about this program, activity, or facility in a language other than English, contact the USDA agency responsible for the program or activity, or any USDA office.

To file a complaint alleging discrimination, write USDA, Director, Office of Civil Rights, 1400 Independence Avenue, S.W., Washington, D.C. 20250-9410, or call toll free, (866) 632-9992 (voice). TDD users can contact USDA through local relay or the Federal relay at (800) 877-8339 (TDD) or (866) 377-8412 (relay voice users). USDA is an equal opportunity provider and employer.

De acuerdo con la ley federal y con la política del Departamento de Agricultura de los Estados Unidos (USDA) por sus reglas, en ningún caso, sostenidamente prohíbe la discriminación ya sea por la raza, color, nacionalidad, sexo (en programas y actividades de educación y entrenamiento), edad, incapacidad de las personas, o por represalias. (No todas las prohibiciones se aplican a todos los programas.)

Si usted necesita la información de este anuncio en un formato alternativo (Braille, letras grandes, o por medio de sonido, etc.), llame al Centro NACIO del Departamento de Agricultura al teléfono 202-720-2600 (voz o TDD).

Si usted necesita información sobre un programa, actividad o instalaciones en un idioma diferente del inglés, llame a la agencia del Departamento que maneja ese programa o actividad, o a cualquier oficina del Departamento de Agricultura.

Para presentar una queja de discriminación, escriba al USDA, Office of Civil Rights, 1400 Independence Avenue, SW, Washington, DC 20250-9410, o llame gratis al 1-866-632-9992 (voz). Para llamadas TDD, llame al USDA al número 1-800-877-8339 o al número 1-866-377-8412. Si Departamento de Agricultura ofrece oportunidades de programas y de empleo libres de discriminación.

USDA UNITED STATES DEPARTMENT OF AGRICULTURE

Form: All-456 (2-Rev. 01-2008)



# Michigan State University Extension



Farm to School  
Kaitlin Koch Wojciak



# Preview

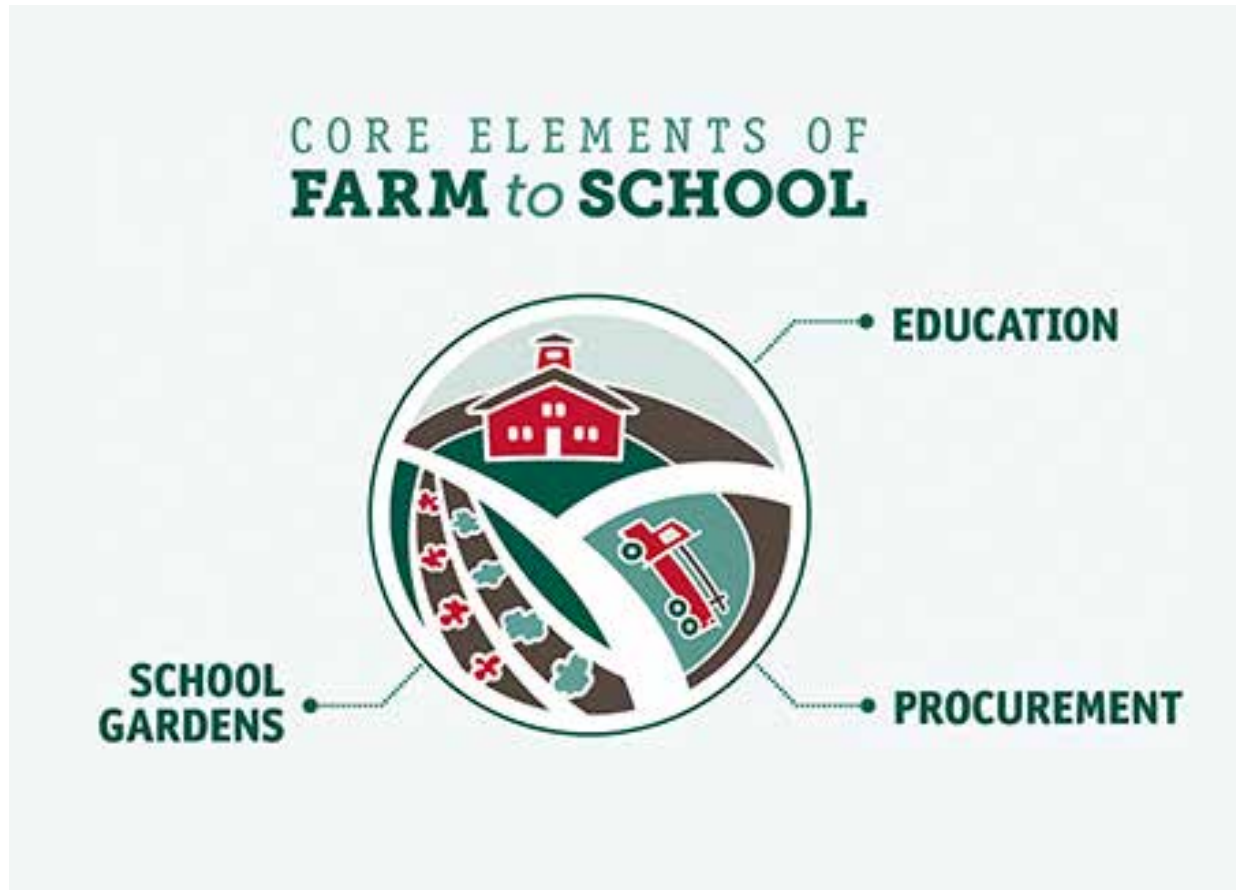
- Your connection to Farm to School
- What is Farm to School?
- Opportunities and benefits
- National and statewide resources



# Is your school doing Farm to School programming?



# What is Farm to School?



# Farm to School: By the numbers



**43% OF MICHIGAN SCHOOL DISTRICTS**  
surveyed by USDA say they participate in farm to school activities.



THAT'S  
**257**  
DISTRICTS



WITH  
**1,581**  
SCHOOLS



AND  
**702,896**  
STUDENTS

**Another 18% of districts surveyed plan to start farm to school activities in the future.**

*(Note: of the 869 school districts in Michigan, 68% completed the USDA Farm to School Census.)*



# Farm to School: By the numbers



**\$19,392,100**

**INVESTED IN LOCAL FOOD  
IN MICHIGAN**

WITH THE AVERAGE SCHOOL DISTRICT  
SPENDING **20%** OF THEIR BUDGET

ON LOCAL PRODUCTS.

SCHOOL DISTRICTS IN MICHIGAN ARE  
CURRENTLY BUYING THE FOLLOWING  
TYPES OF LOCAL FOODS:



**83%** FRUITS



**77%** VEGETABLES



**56%** MILK



**16%** MEAT OR POULTRY

**50%**

OF MICHIGAN DISTRICTS SURVEYED  
PLAN TO INCREASE LOCAL FOOD  
PURCHASES IN THE FUTURE.



# Opportunities at your school

- **In the classroom**
  - Learn about nutrition education, food systems, cultural importance of food and more
  - Experiential education and field trips
  - Host a producer to learn more about agriculture
  - Taste testing





# Opportunities at your school

- **In your food program**
  - Use more local products from farmers, distributors and other outlets. It all counts!
  - Hold taste testings and events
  - Nutrition education



Community dinner from Waterford Schools Food Service, featuring local ingredients



# Opportunities at your school

- **In the garden**
  - Learn about agriculture and growing food through hands-on experience
  - Using garden produce in school meals
  - Physical activity
  - Taste testing and garden cooking
  - Garden based lesson activities



# Opportunities in your community

Who could I involve?

Teachers

Students

Food  
service  
directors

Facilities  
staff

Parents

Resource  
providers

Food  
service staff

Producers

Community  
agencies



# Benefits of Farm to School

- Link from learning to plate (or tray)
- Community engagement
- Support of local farms and economy
- Fresher food choices
- Healthy options
- Increased variety
- Ability to communicate needs



See NFSN Fact Sheet



# Motivation



Picture: Growing Minds Farm to School



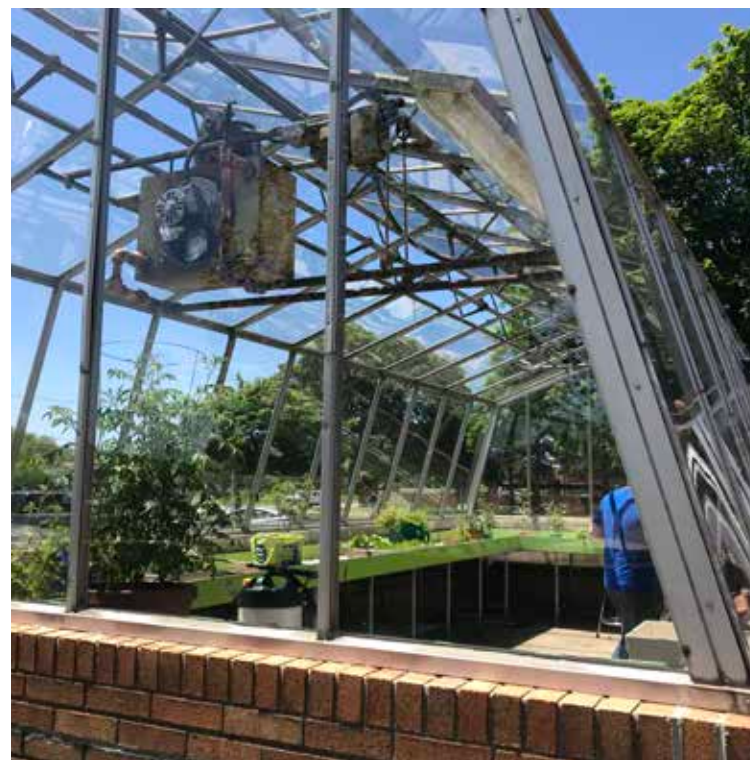
# Environmental Education Connections

- Recycling
  - Composting food
  - Participate in a local farm program or purchase locally grown produce



# Environmental Education Connections

- Environmental Protection
  - Offer a teaching unit on environmental issues facing the state
  - Establish or maintain a natural Michigan garden project with native plants or vegetables. Grown produce is used in teaching units or donated to a community organization
  - Establish or maintain an outdoor animal habitat project



# Getting Started

## *Michigan Resources*

- [Michigan Farm to School](#)
  - Guides
  - Farm to School list (monthly school garden newsletter)
  - Research and Reports
- [Michigan Farm to Institution Network](#)
  - Collaborative space for sharing, learning and working
  - Seasonal product guides
  - Hosted by the MSU Center for Regional Food Systems with support from MSU Extension





# Getting Started

## *National Resources*

- [National Farm to School Network](#)
  - National conference [2020 in Albuquerque, NM]
  - Compile resources
  - Communications hub, State Core + Supporting Partners
  - Policy and promotion
- [USDA Farm to School](#)
  - Farm to School grants
  - Fact sheets
  - Regional contacts





[www.mifarmtoschool.msu.edu](http://www.mifarmtoschool.msu.edu)



# Thank you!

Contact information:

Kaitlin Wojciak

MSU Extension Community  
Food Systems Educator

586.469.6088

[kaitwoj@msu.edu](mailto:kaitwoj@msu.edu)

