

Title VI & Draft Michigan Environmental Justice Screening Tool (MiEJScreen)

Air Advisory Council

April 20, 2022



Title VI of the Civil Rights Act of 1964

“No person in the United States shall, on the ground of race, color, or national origin (limited-English proficiency), be excluded from participation in, be denied the benefit of, or be subjected to discrimination under any program or activity receiving Federal financial assistance”

EPA's Implementing Regulations

- EPA's External Civil Rights Compliance Office
- Title 40 of the Code of Federal Regulation, Part 7
 - Notice of Non-Discrimination
 - Grievance Procedures
 - Non-Discrimination Compliance Coordinator
 - Public Participation
 - Meaningful Access for Persons with Limited English Proficiency
 - Meaningful Access for Persons with Disability



EGLE Policies

- Policy on Public Involvement in Department Decisions 09-007
- Nondiscrimination in EGLE Programs 09-024
 - Nondiscrimination Compliance Coordinator
 - Grievance Procedures
 - Notice of Nondiscrimination
 - Access for Persons with LEP
 - Access for Persons with Disabilities
- Limited English Proficiency Plan



Discrimination Complaints

- Discrimination complaints can be filed either through EGLE or EPA
- Requirements:
 - Complaint must be in writing
 - Filed within 180 days
 - Complaint must describe the actions or inactions that resulted in discrimination
 - Entity must have jurisdiction to resolve
- Formal investigation vs. informal resolution

Past Complaints

- Flint: Select Steel June 9, 1998
 - Case closed October 30, 1998
 - Allegations dismissed
- Flint: Genesee Power December 15, 1992
 - Case closed January 19, 2017
 - Finding of discrimination in public participation process
 - No finding of adverse disparate impact
- Flint: Water March 8, 2016
 - Informal Resolution Agreement December 4, 2019
 - Case closed January 5, 2021

Current Complaints

- Detroit: US Ecology North July 27, 2020
 - Informal resolution agreement negotiation ongoing
- Kalamazoo: Graphic Packaging September 1, 2021
 - Informal resolution agreement negotiation ongoing
- Flint: Ajax November 8, 2021 and December 31, 2021
 - Informal resolution agreement negotiation ongoing
- Detroit: Stellantis November 8, 2021
 - Informal resolution agreement negotiation ongoing

Acronyms:

EGLE –
Michigan Department
of Environment, Great
Lakes and Energy

OEJPA – Office of
Environmental Justice
Public Advocate

IEJRT – Interagency
Environmental Justice
Response Team

EGLE and Executive Order 2019-06

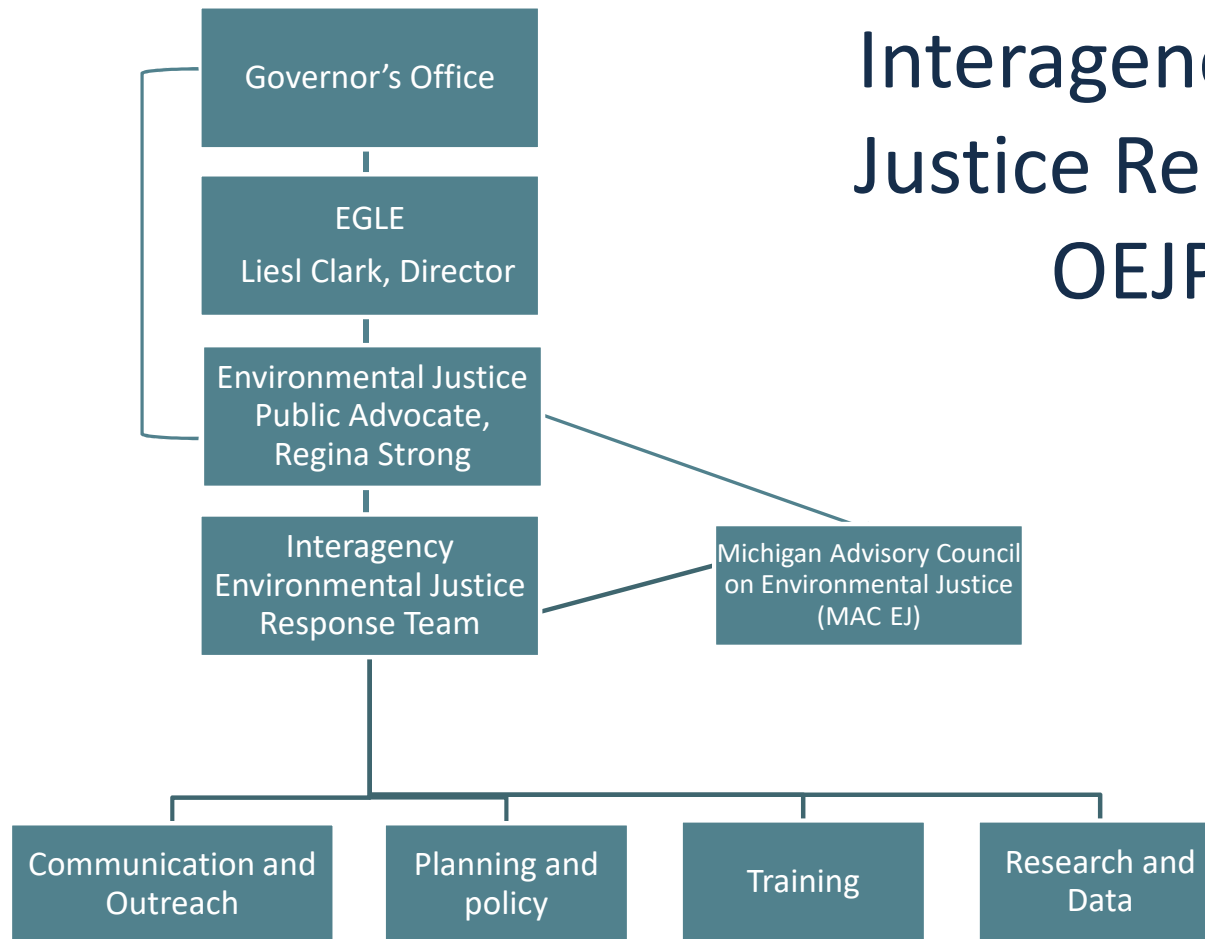
Governor Whitmer
created EGLE and the
OEJPA

OEJPA created as a Type I
agency within EGLE

Role of Environmental
Justice Public Advocate

Established IEJRT

Interagency Environmental Justice Response Team and OEJPA Structure





Michigan Advisory Council on Environmental Justice (MAC-EJ)

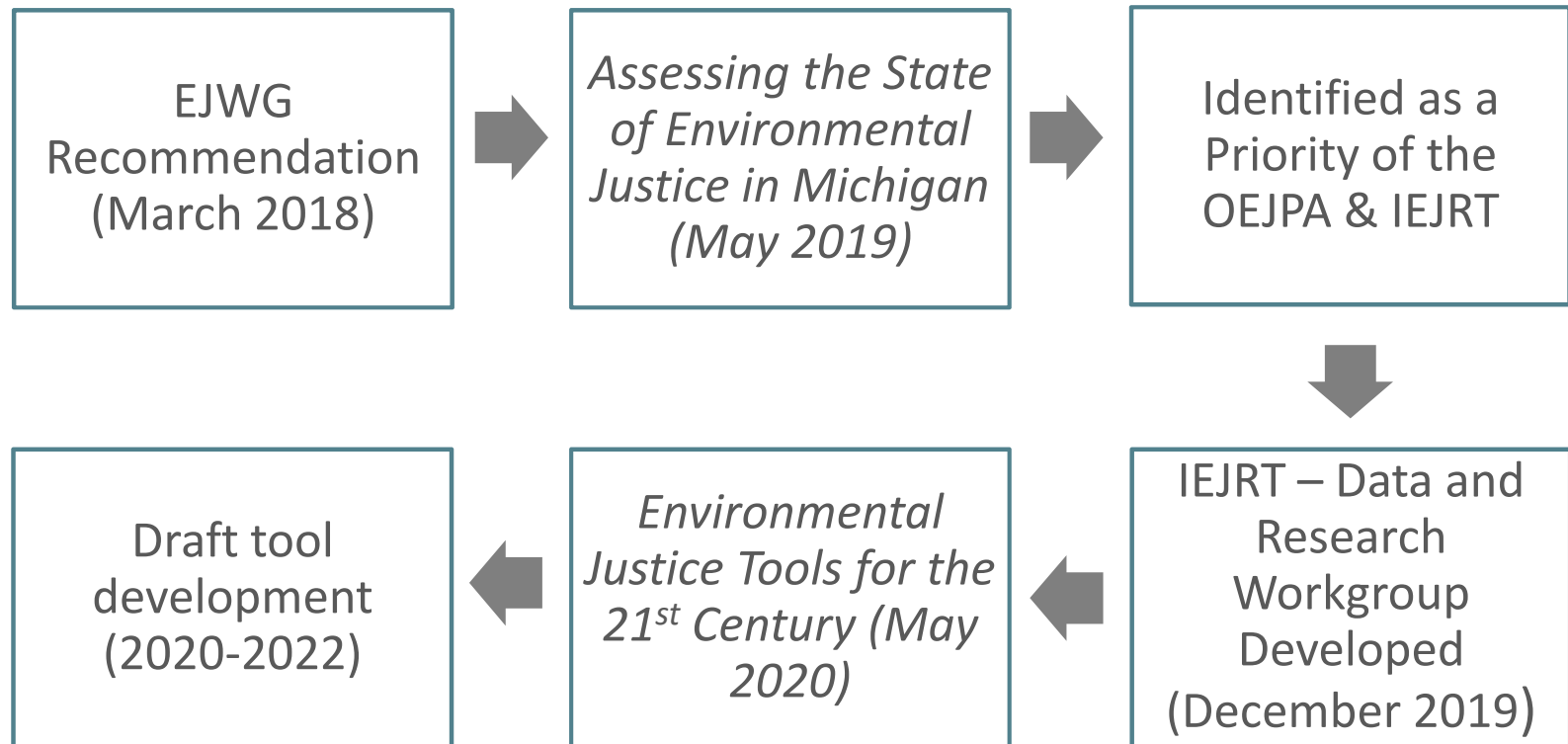
Acronyms:

EJWG –
Environmental Justice
Work Group

OEJPA – Office of
Environmental Justice
Public Advocate

IEJRT – Interagency
Environmental Justice
Response Team

Background MiEJScreen Development



Process



REVIEW EXISTING
TOOLS &
METHODOLOGY



COLLABORATION
FROM VARIOUS
STATE DEPARTMENTS



STAKEHOLDER
INVOLVEMENT

Purpose

- Develop a Michigan specific mapping tool
- Assess cumulative factors (environmental, socioeconomic, health) that communities in Michigan may face
- Help inform policy decisions, allocate resources, and address community specific issues/concerns
- Able to be used by multiple stakeholders



Acronyms & Definitions:

CalEnviroScreen -
California
Communities
Environmental Health
Screening Tool

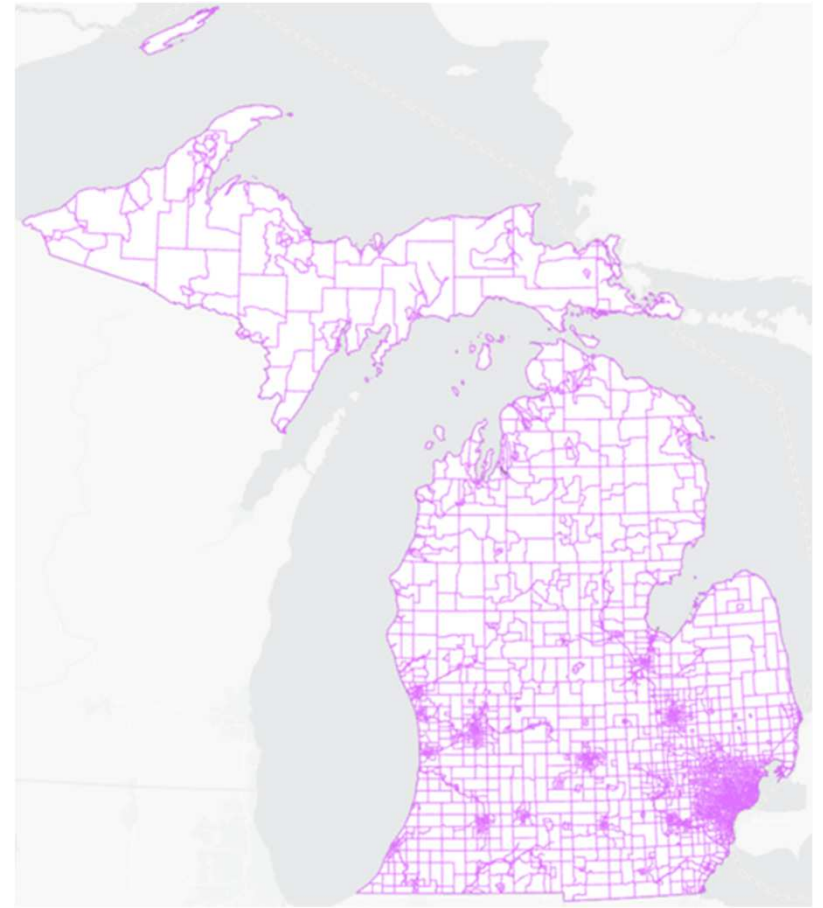
Methodology

- Based on California's CalEnviroScreen
- Uses environmental, health and socioeconomic data to produce scores for every census tract in the state
- Scores are mapped so that different communities can be compared.
- Uses both national and statewide data

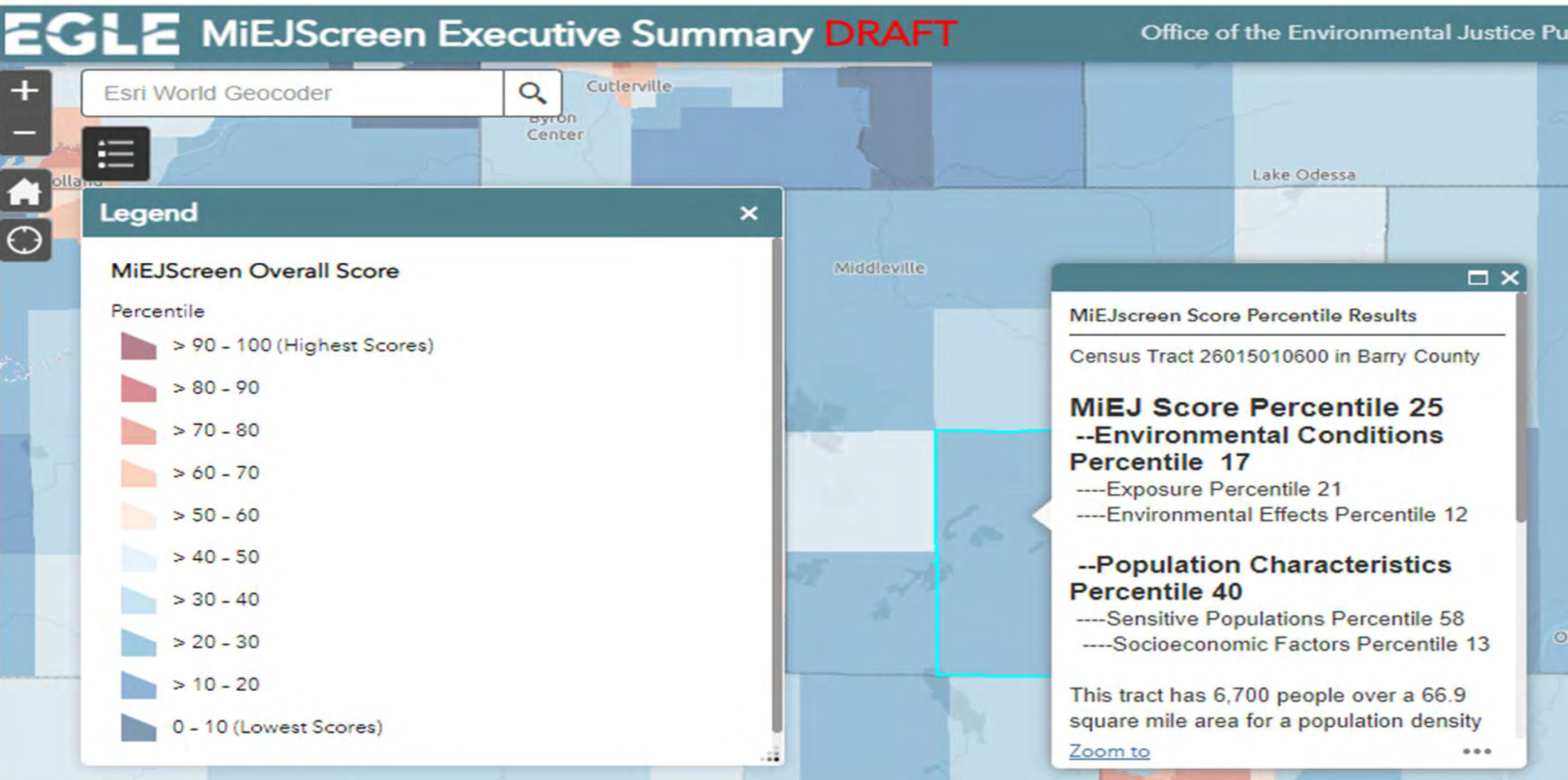


Why Census Tracts

- Census Tracts are small, relatively permanent subdivisions of a county designated by the U.S. Census Bureau
- Census tracts have an average population size of 4,000 people
- Michigan has 2,767 Census Tracts



How to Interpret Percentile Ranking



Categories	Environmental Exposure	Environmental Effects	Sensitive Populations	Socioeconomic Factors
Indicators	NATA Air Toxics Cancer Risk NATA Respiratory Hazard Index NATA Diesel Particulate Matter Particulate Matter (PM _{2.5}) Ozone Traffic Density	Proximity to Cleanup Sites Proximity to Hazardous Waste Facilities Impaired Water Bodies Proximity to Solid waste Sites and Facilities Lead Paint Indicator Proximity to RMP Sites Wastewater Discharge Indicator	Asthma Cardiovascular Disease Low Birth Weight Infants Blood Lead Level Life Expectancy	Low Income Population Black, Indigenous, People of Color Population Educational Attainment Linguistic Isolation Population Under Age 5 Population Over Age 64 Unemployment Housing Burden
Sub Scores	<p align="center">Environmental Conditions</p> <p align="center">(Average percentile of Environmental Exposure indicators + 0.5 x average percentile of Environmental Effects indicators)</p> <p align="center"><u>1.5</u></p>		<p align="center">Population Characteristics</p> <p align="center">(Average percentile of Sensitive Population indicators + average percentile of Socioeconomic Factor indicators)</p> <p align="center"><u>2</u></p>	
Score	<p align="center">Final Composite Score = Environmental Conditions score x Population Characteristics score</p> <p align="center">MiEJScreen Score</p>			

Acronyms:

NATA –
National-Scale Air
Toxics Assessment

PM_{2.5} – Particulate
Matter that is 2.5
microns or smaller in
size

EPA's EJSCREEN –
Environmental
Protection Agency's
Environmental Justice
Screening and
Mapping Tool

Environmental Exposure Indicators



NATA Air Toxics Cancer Risk



NATA Respiratory Hazard Index



NATA Diesel Particulate Matter



Particulate Matter (PM_{2.5})



Ozone



Traffic Density

Environmental Effects Indicators



Proximity to Cleanup Sites



Proximity to Hazardous Waste Facilities



Impaired Water Bodies



Proximity to Solid Waste Sites and Facilities



Lead Paint Indicator



Proximity to RMP Sites



Wastewater Discharge Indicator

Sensitive Populations Indicators



Asthma



Cardiovascular Disease



Low Birth Weight Infants



Blood Lead Level



Life Expectancy

Socioeconomic Factors Indicators



Low Income Population



Population Under Age 5



Black, Indigenous, People of Color Population



Population Over Age 64



Educational Attainment



Unemployment



Linguistic Isolation



Housing Burden

Context Layers

Additional EJ Layers

- *Sites of Environmental Contamination (Part 201)
- Home Owners' Loan Corporation Neighborhood Redlining Grade
- Urban Heat Islands
- Food Desert
- Ozone and Sulfur Dioxide Non Attainment

Geographic Feature Layers

- Tribal Areas
- Schools
- Places of Worship
- Hospitals
- Counties
- State Lands
- Population Density

Supporting Documents

EGLE MICHIGAN DEPARTMENT OF ENVIRONMENT, GREAT LAKES, AND ENERGY

MiEJScreen

FACTSHEET

INTRODUCTION

The state of Michigan defines environmental justice (EJ) as “the equitable treatment and meaningful involvement of all people, regardless of race, color, national origin, ability, or income and is critical to the development and application of laws, regulations, and policies that affect the environment, as well as the places people live, work, play, worship, and learn.”

The Michigan Department of Environment, Great Lakes, and Energy’s (EGLE) Office of the Environmental Justice Public Advocate, in cooperation with the Interagency Environmental Justice Response Team Data and Research Workgroup, has developed MiEJScreen, an interactive mapping tool, in response to the dedicated advocacy of community members and the 2018 recommendations from the Michigan Environmental Justice Workgroup. Best practices of EJ screening tools around the nation were used to create this resource.

WHAT IS MIEJSCREEN?

MiEJScreen is an interactive mapping tool that identifies Michigan communities that may be disproportionately impacted by environmental hazards. The map allows users to explore the environmental, health, and socioeconomic conditions within a specific community, region, or across the entire state. These data sets can be viewed individually or combined into a final MiEJScreen score that allows users to understand how communities experience environmental justice impacts relative to others. These results are depicted in the form of maps so that different communities can be compared to one another. A census tract with a high score is one that experiences higher pollution burden and vulnerability than census tracts with low scores. MiEJScreen ranks census tracts based on data that are available from state and federal government sources.

Fact Sheet

MiEJSCREEN USER GUIDE

WIDGET SUMMARY

Icon	Name	Function
	Search Address	The “Search Address” bar at the top left corner lets you search for a street address, place name, Census Tract ID, or latitude, longitude coordinate pair.
	Legend	The “Legend” button displays a key of the symbols and layers used on the map. Clicking the checkbox for a layer from the layer list or context layers will turn that layer on or off on the map and legend.
	Bookmarks	The “Bookmarks” button shows shortcuts to specific areas of interest in the map. This button also allows you to create new bookmarked locations.
	MiEJScreen Report	The “MiEJScreen Report” button lets users filter the map to show only what is near your current location. Once a location is entered, clicking “report” will generate a report of all indicator percentile values and some demographic data for the census tracts within the chosen buffer zone. The user can then download the report as a spreadsheet and print the report in a pdf format using the toolbar in the upper-right corner of the reports page.
	Side by Side Map Viewer	This button allows users to look at two layers side by side.
	Zoom In & Out	The “Zoom In & Out” buttons can be used to zoom in or out of the map. Alternately, your computer mouse wheel also lets you zoom in and out, while left clicking and dragging lets you pan around the map.
	Default Extent	The “Default Extent” button takes you back to the original extent (zoom) of the map.
	My Location	The “My Location” button brings up your current location on the map. For this widget to work, you may need to allow “egle.maps.arcgis.com” to use your current location.
	Previous & Next Extent	The “Previous & Next Extent” buttons allow you to toggle between the different extents (zoom) that you have used on the map.
	Layer List	The “Layer List” button displays a key of the symbols used on the map. It also lets you choose which information you want to see. Clicking the checkbox for a layer will turn that layer on or off on the

User Guide

MiEJScreen

Michigan Environmental Justice Mapping and Screening Tool

DRAFT TECHNICAL REPORT

March 2022

EGLE MICHIGAN DEPARTMENT OF ENVIRONMENT, GREAT LAKES, AND ENERGY

Office of the Environmental Justice Public Advocate
800-662-9278 | Michigan.gov/EGLE

Technical Report

Questions

Contact the Office of Environmental Justice
Public Advocate at:



EGLE-EnvironmentalJustice@Michigan.gov

OR

517-249-0906