



MICHIGAN DEPARTMENT OF  
ENVIRONMENT, GREAT LAKES, AND ENERGY

# Water Use Advisory Council

---

April 14, 2026

# Agenda

## **Water Use Advisory Council (WUAC) Meeting**

Hosted by the Department of Environment, Great Lakes, and Energy (EGLE)

**Tuesday, April 14, 2026**

**1:00 p.m.- 4:00 p.m.**

Debroah Stabenow Hall, (Formerly Constitution Hall)  
525 West Allegan, Lansing, MI 48933

Remote Option Available Via Teams

[Click here to join the meeting](#)

**Or call in (audio only)**

+1 248-509-0316,761098936# United States, Troy

**Phone Conference ID: 761 098 936#**

# Agenda (cont.)

## AGENDA

1. **Welcome - Laura**
2. **Roll Call**
3. **Approval of Minutes-Roll Call Vote Discussion**
4. **Approval of Agenda-Roll Call Vote Discussion**
5. **Public Comment (Three Minute Limit)**
6. **Committee Chairs Report - Bryan**
  - a. **Conservation and Efficiency Committee**
  - b. **Data Collection Committee**
    - **HEMI Update – Howard or Sydney**
  - c. **Models Committee**
  - d. **Implementation Committee**
7. **EGLE Update**
  - a. **WWAT Tool Final Phase Update – Megan**
  - b. **Water Use Assessment Unit Update – Jim**
  - c. **Great Lakes Compact Council Updates – Emily**
  - d. **Funding Updates – Sara/Adam**
8. **Open Discussion**
  - a. **Water User Groups – Lena/Emily**
  - b. **Follow-up on Water Districts Presentation - Laura**

# Agenda (cont.)

## 13. Future - Pat

### a. 2026 Meeting Dates

- June 9
- \*August 11
- \*September 8
- \*October 13
- \*November 10
- December 8 (tentative)

### b. Formats

### c. Quorum

## 14. Open Comments (Three Minute Limit)

## 15. Motion to Adjourn

# 1. Welcome



## **2. Roll Call**



## **3. Approval of Minutes –Roll Call Vote**



## **4. Approval of Agenda—Roll Call Vote**

# 5. Public Comment

---

3 Minute Limit

# 6. Committee Chairs Report

---

# Data Committee Update

1. Hydrologic Enhancement for MI (HEMI) Project
2. Long-Term Data Planning Project
3. ± Related projects
4. Synthesis of results and recommendations for 2026 report

# 1. HEMI Project

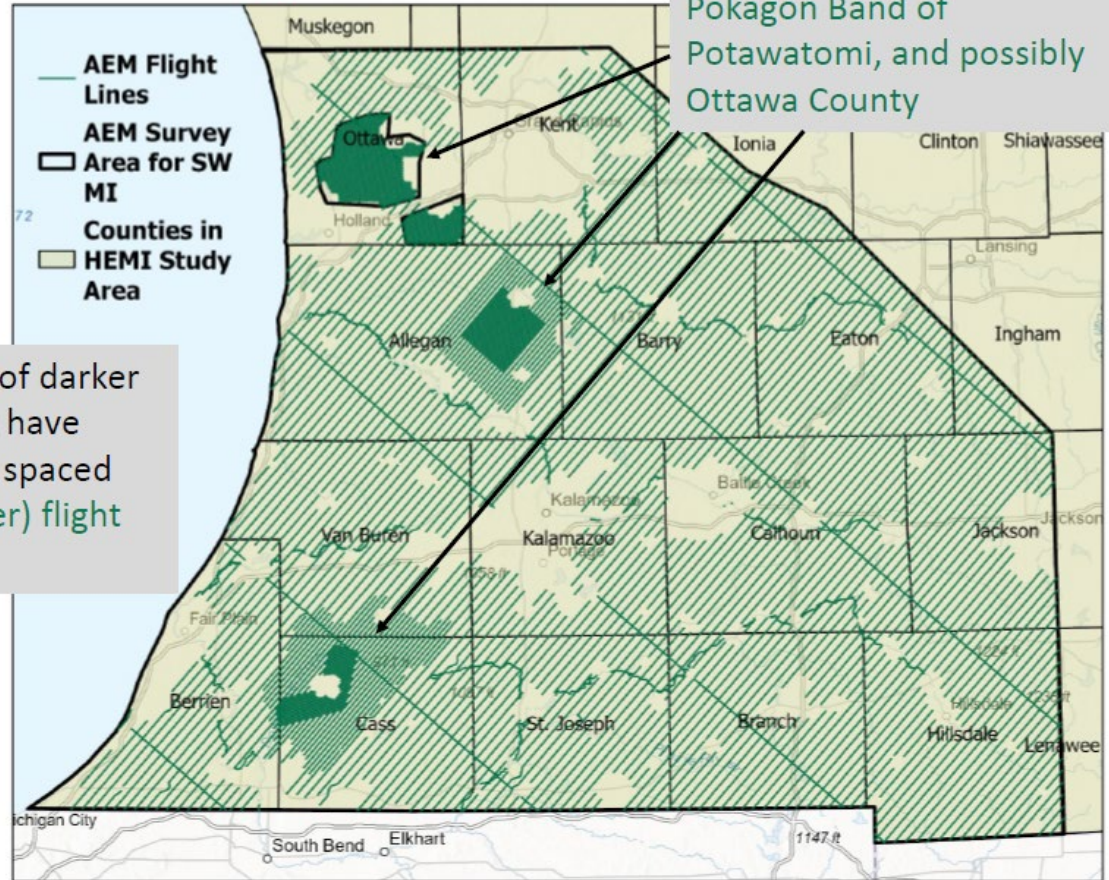
**Project investigators:** Sydney Ruhala, EGLE; Howard Reeves and Brent Heerspink, USGS

- New EGLE hydrologic database to combine streamflow, groundwater levels, and water-quality data (including temperature) collected by state agencies and USGS
- Network analysis of streamflow network at state scale
- Airborne electromagnetics (AEM) survey of SW Michigan
- Statewide groundwater monitoring network (EGLE and USGS)

# HEMI AEM Survey Update

- Flights expected to begin on or around April 20, continuing through June
- ~ 8,000 miles of flight lines (over 430,000 data points!)
- Includes river corridors for Kalamazoo, Thornapple, St. Joseph, Paw Paw, and Rocky
- Data analysis and integration with existing data to update geologic interpretations will follow into 2027

## Southwest Michigan AEM Flight Lines



Denser flight lines will provide higher resolution data Gun Lake Tribe and Pokagon Band of Potawatomi, and possibly Ottawa County

Areas of darker Green have closer spaced (denser) flight lines

# HEMI AEM Survey Outreach

- USGS and EGLE have developed project websites:
  - **EGLE HEMI Page:**  
<https://www.michigan.gov/egle/about/organization/geologic-resources-management/hydrologic-enhancement>
  - **USGS AEM Page:**  
<https://www.usgs.gov/centers/upper-midwest-water-science-center/science/airborne-electromagnetic-aem-surveys-southwest>
- USGS and EGLE are also working on a media event to be held at one of the airfields in early May.

# Additional HEMI Updates

- In March 2026, USGS presented initial work and/or preliminary findings to EGLE for the following tasks:
  - Streamgauge Network Analysis
  - Stream Temperature Analysis
  - Groundwater Monitoring Well Network Analysis
  - Groundwater Modeling
- EGLE and USGS will present the work completed for each task to the Data Committee and WUAC once the work has progressed further and more findings are available.

# 2. Long-Term Data Planning

## “Water Gap” project

**Project investigators:** Sara Pearson, Khalid Omar, MGS

- Examine existing hydrologic data sources and identify data gaps in Michigan
- Over 2,000 data sources summarized in spreadsheets and stored on MGS server, including
  - Locational information on coarse scale (county, region, etc.)
  - Links to published documents
  - Tiered evaluation of data quality (QA/QC, validation, peer review, etc.)
  - Also includes age relevance, limitations and (or) uncertainties

# 3. Also following some related projects...

- Wellogic updates (Pearson, MGS)
  - Location and data validation completed
  - An additional 1.2 million digital records were added
- Regional groundwater flow model of SW Michigan (Heerspink, USGS)
  - Objective is to build a regional model that EGLE can use for SSRs
  - Model domain covers the AEM flight area
- Catchment-scale accounting to improve understanding of downstream propagation of streamflow depletions for the WWAT
  - Synthetic modeling (Reeves and Heerspink, USGS)
  - Catchment-scale accounting (Infante, MSU IWR; Zorn, MDNR; and Van Dyke EGLE)

# Water Study Projects

I- Water Data Gap Analysis

II- Western Michigan Regional Study  
for Seven Counties

Michigan Geological Survey

# Project I

# Overview and Progress

## Water Data Gap Analysis

Develop a cost-efficient, data-driven framework to support better data collection practices

- Assessing existing data resources,
- Identifying data gaps,
- Prioritizing regions for additional collection,
- Establishing strategies for integration and management of data

- Phase 1: Quality Assurance Project Plan (QAPP) Development (done)
- Phase 2: Initial Data Compilation and Inventory (done)
- Phase 3: Data Gap Analysis (in-progress)
- Phase 4: Development of Data Collection Strategies
- Funded by EGLE: \$125000
- Project started: 1/1/2025
- Project span: 23 months
- Completion date: 11/30/2026

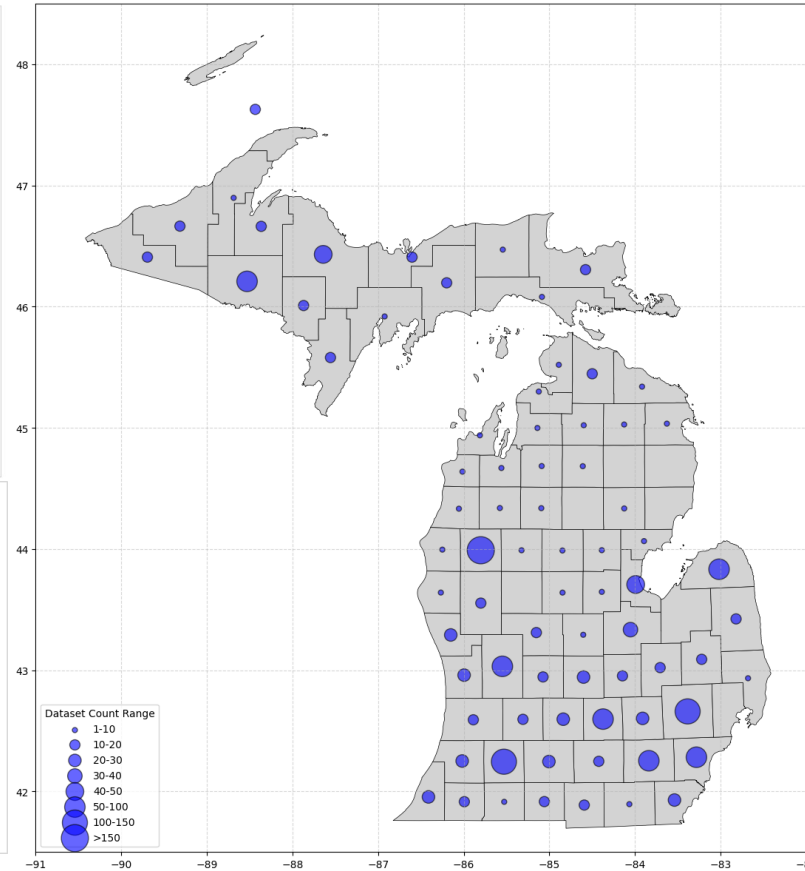
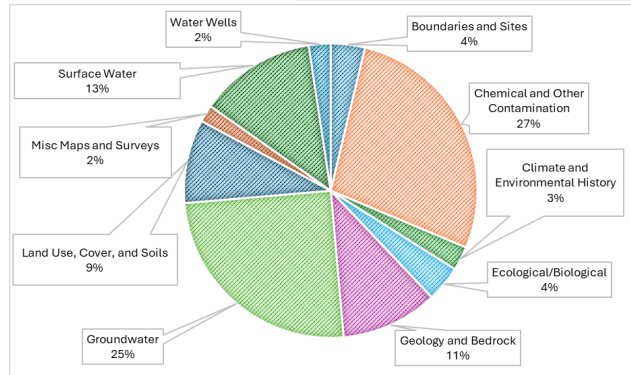
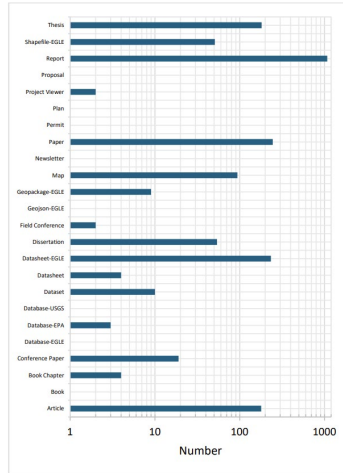


# Data Sources

2,100+ datasets from state, federal, academic, and internal sources using a standardized evaluate.. on and tiering process

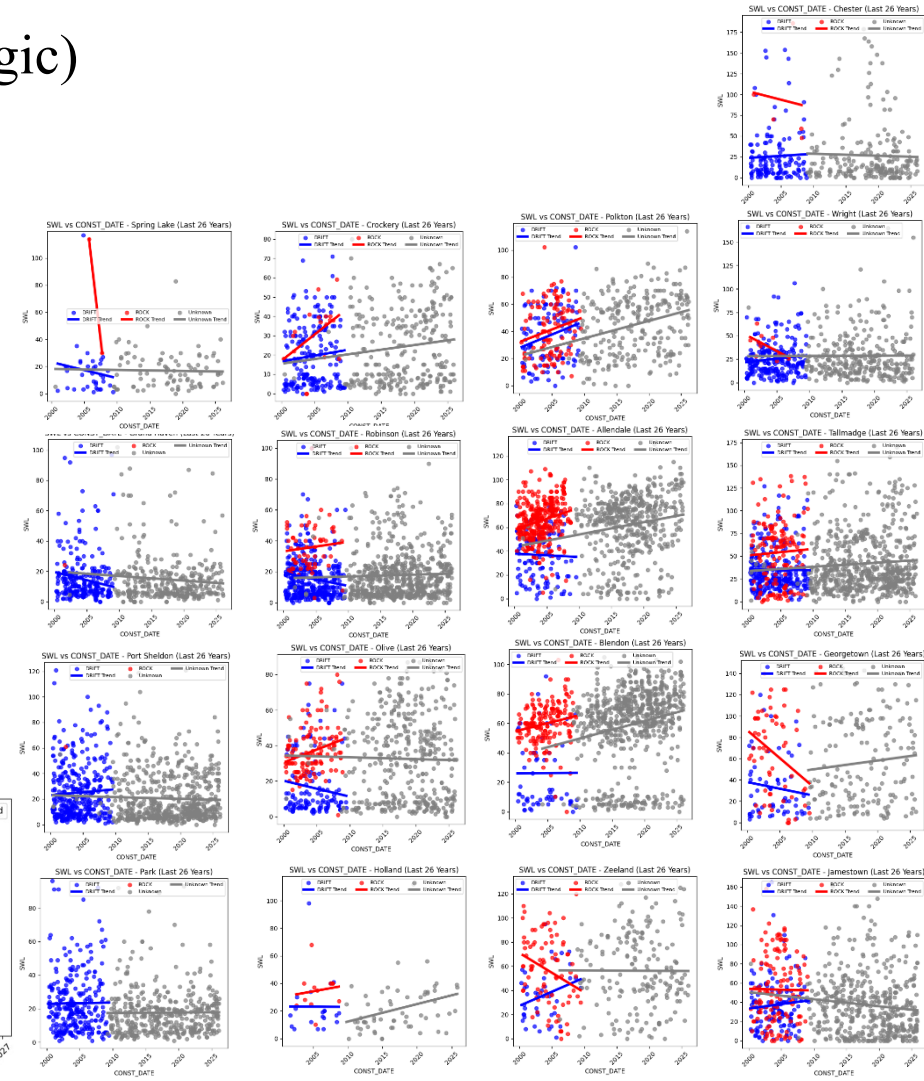
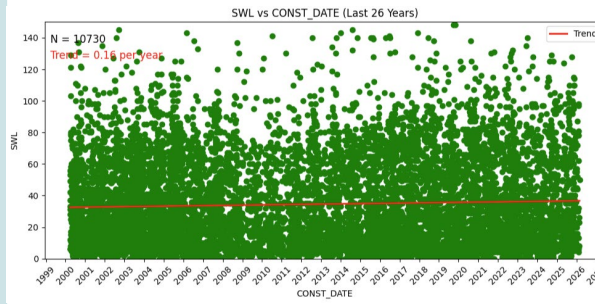
- MGS and WMU
- USGS
- EGLE
- USEPA

## Phase 3: Data Gap Analysis



# Ottawa Co GWD (Wellogic)

## Phase 3: Data Gap Analysis



# Western Michigan Regional Water Study - Seven Counties

## Project II

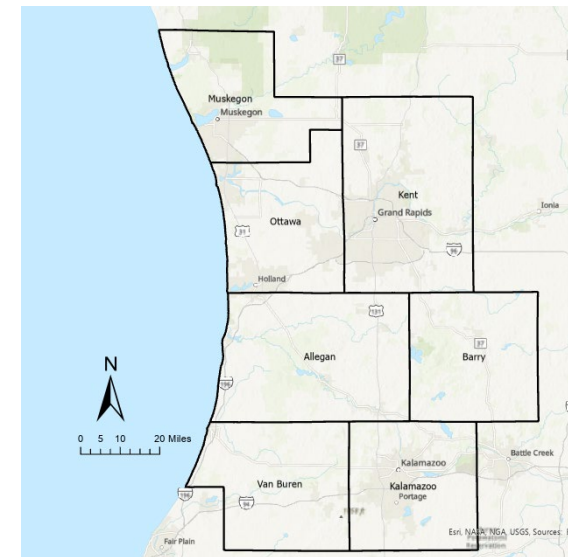
**Counties:** Muskegon, Ottawa, Allegan, Kent, Barry, Kalamazoo, and Van Buren

**Purpose:** Assess current and future water-related needs across the region and groundwater mapping

**Outcome:** Data-driven planning tools to guide sustainable water management for the next 25 years.

## Overview and Progress

- Phase 1: Scoping & Data Collation (in progress)
- Phase 2: Modeling & Scenario Development
- Phase 3: Gap Analysis & Strategy Options
- Phase 4: Dashboard Development & Engagement
- Phase 5: Reporting & Recommendations
- Funded by EGLE: \$1M
- Project started: 2/1/2026
- Project span: 28 months
- Completion date: 5/31/2028





# Data Committee Plans for 2026

- Anticipating MGS, USGS, and EGLE updates at monthly meetings
- Encourage sharing of data characteristics (metadata)
- Initiate content for 2026 report to synthesize results, deliverables, and recommendations



MICHIGAN DEPARTMENT OF  
ENVIRONMENT, GREAT LAKES, AND ENERGY

# 7. Program Update

---

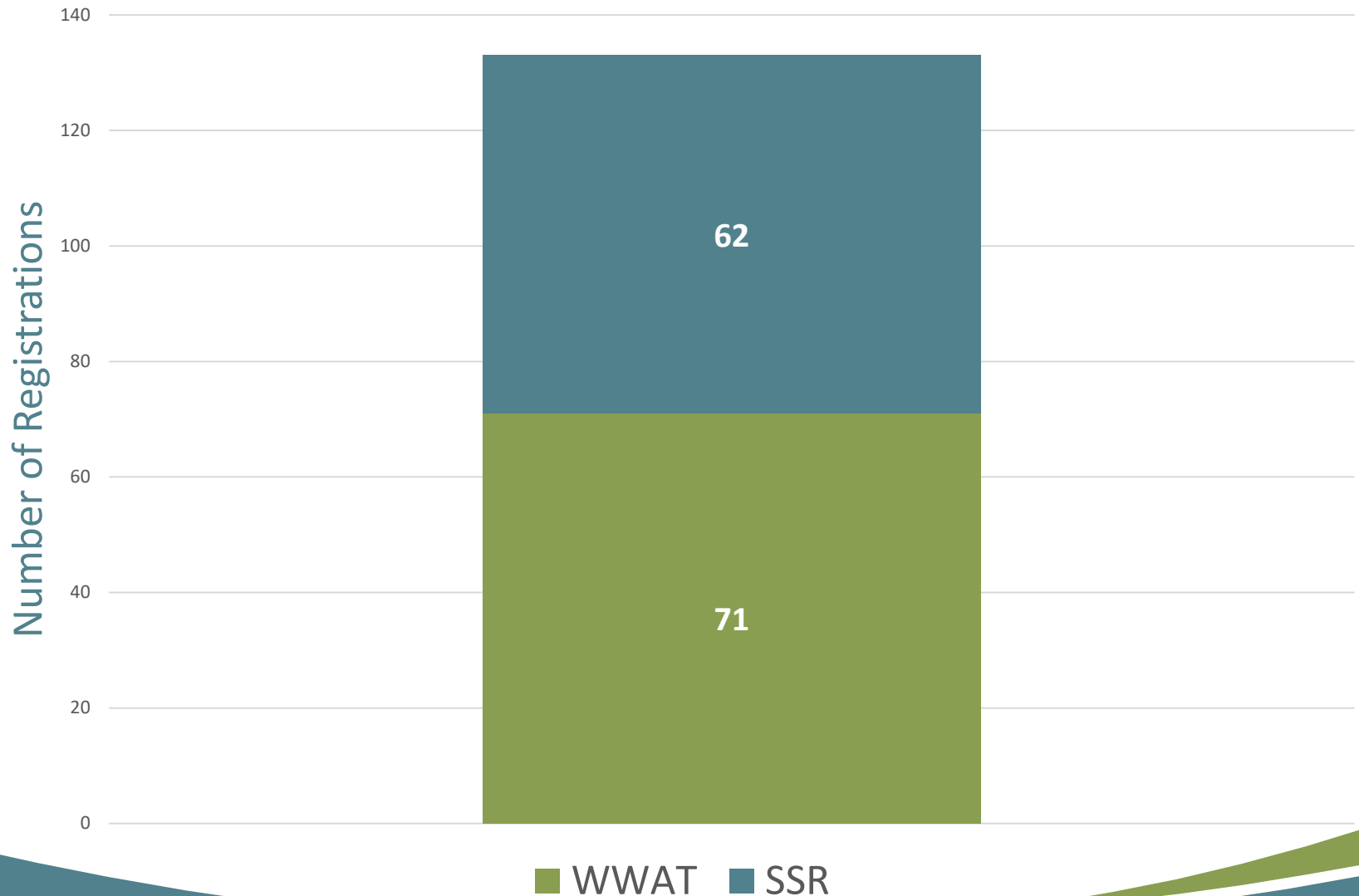
Water Use Advisory Council

April 14, 2026

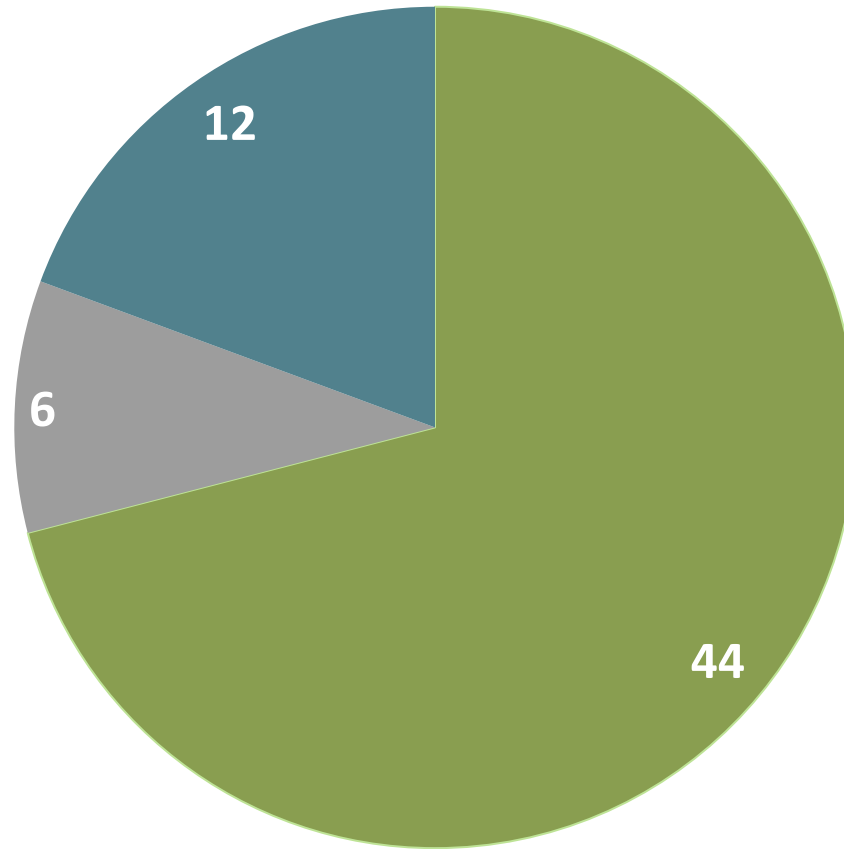
# Outline

- Part 327 Year-to-Date Metrics
  - WWAT & SSR Registrations
  - SSR Timeliness
  - Permits
  - Pre-screening Reviews
  - Compliance Numbers
- Updated Zone D WMA Map
- Damage to USGS Stream Gage

## 2026 SSRs Requested Vs. WWAT Registrations



## Total SSRs Determinations 2026



■ SSRs Authorized   ■ Denied   ■ Retracted   ■ Still Pending

# Part 327 Calendar Year-to-Date Metrics

- **January 2026 – April 2026**
  - 71 WWAT registrations
  - 62 SSR requests
    - Zone A - 0
    - Zone B - 11
    - Zone C - 23
    - Baseline Replacement – 1
    - Dewatering - 9
    - Pending - 12
    - Retracted – 6

# January - April 2026 Snapshot

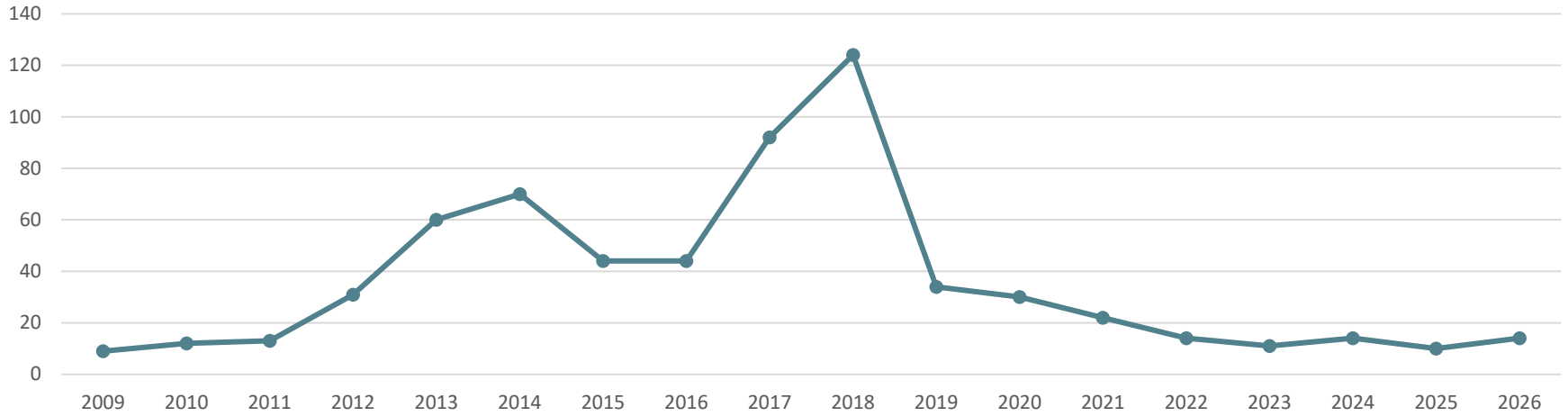
SSR Category	Total	Pending	Retracted	Late	% Done in 10 Days	% Done in 30 Days
Admin	9	2	1	5	17	100
Desktop	43	8	3	17	47	100
Technical	7	1	0	6	0	100
Uncategorized	1	1	2	0	0	0
Totals	62	12	6	28	-	-

Average Number of Business Days  
from Receipt of SSR Request:

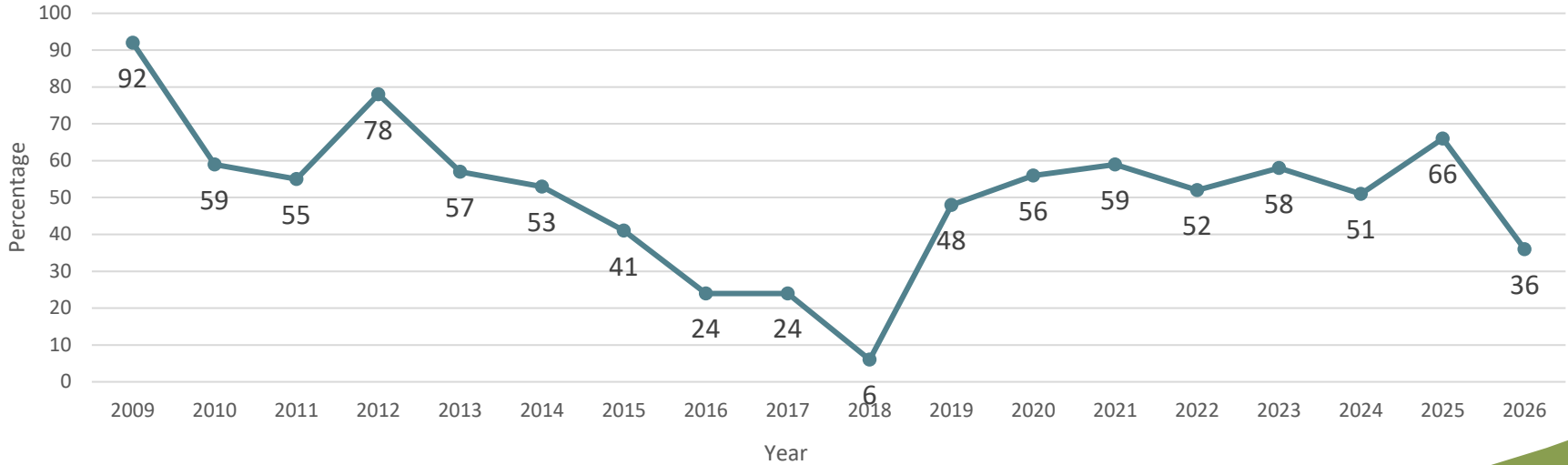
**13.84 Days**

Statutory Deadline: 10 Business Days

## Average Number of Business Days from Receipt of SSR Request



## Percentage of SSRs Completed within 10 Business Days

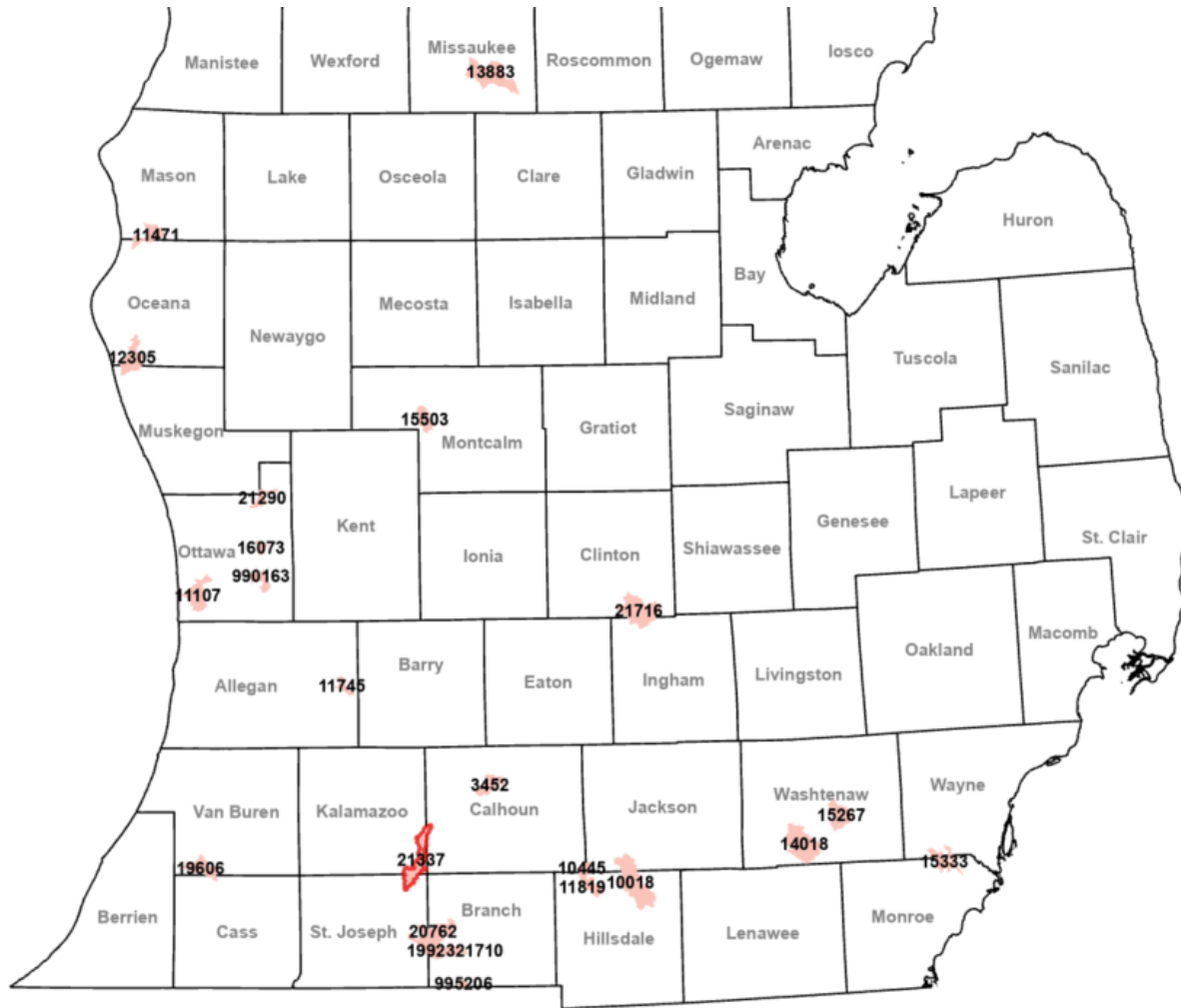


Statutory Deadline: 10 Business Days

# 2026 327 Metrics

- **327 Permits:**
  - 1 Requests
    - 1 Pending Review
- **Compliance:**
  - 43 Communications
    - 7 Revised Registrations
    - 28 Installation Verifications
    - 2 Water Use Reporting Issues
    - 3 After the Fact Registrations
    - 3 Missing Pump Information Requests
- **Pre-screening:**
  - 4 Requests
    - 1 Zone B
    - 1 Baseline Replacement
    - 2 Pending Review

# Updated Zone D WMA Map



# Damage to USGS Stream Gage

- USGS 04096970 Bear Creek at Lawrence Rd near Leonidas, St. Joseph County
- WMA 21337, Zone D
- Current Balance -233 gpm
- Installation costs \$25,000
- DNR Law Enforcement Division investigating

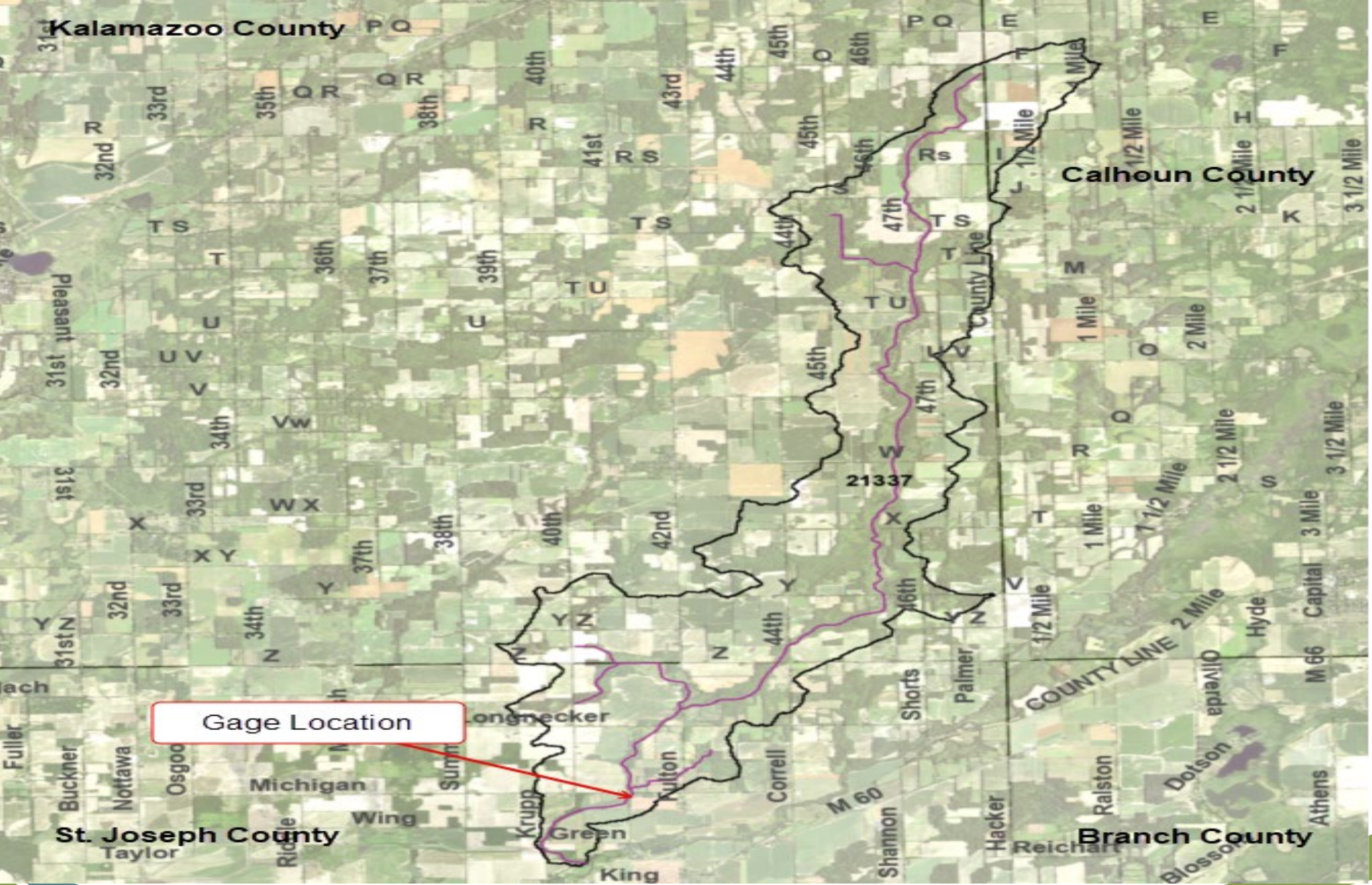
# Damage to USGS Stream Gage



Before



After



Gage Location

Michigan Department of  
**Environment, Great Lakes, and Energy**

800-662-9278

Michigan.gov/EGLE



Follow us at: [Michigan.gov/EGLEConnect](https://Michigan.gov/EGLEConnect)

# 8. Open Discussion

---

# 9. Future

- **2026 Meeting Dates**

- June 9
- \*August 11
- \*September 8
- \*October 13
- \*November 10
- December 8 (tentative)

a. Formats

b. Quorum

# 10. Open Comments

---

3 Minute Limit

# 11. Motion to Adjourn