



MICHIGAN DEPARTMENT OF
ENVIRONMENT, GREAT LAKES, AND ENERGY

Water Use Advisory Council

November 12, 2024

WUAC Chair Order

November 12, 2024

- Laura Campbell, Michigan Farm Bureau (1-5)
- Bryan Burroughs, Michigan Trout Unlimited (6-10)

Agenda

Water Use Advisory Council (WUAC) Meeting

Hosted by the Department of Environment, Great Lakes, and Energy (EGLE)

Tuesday, November 12, 2024

1:00 p.m. - 4:00 p.m.

**Lee Walker Conference Room, North Atrium, Constitution Hall
525 West Allegan, Lansing, MI 48933**

Remote Option Available Via Teams

[Click here to join the meeting](#)

Or call in (audio only)

[+1 248-509-0316, 979460526#](tel:+12485090316) United States, Pontiac

Phone Conference ID: 979 460 526#

AGENDA

Agenda (cont.)

- 1. Welcome**
- 2. Roll Call**
- 3. Approval of Minutes-Roll Call Vote Discussion**
- 4. Approval of Agenda-Roll Call Vote Discussion**
- 5. Public Comment (Three Minute Limit)**
- 6. Committee Chairs Report**
 - a. Models Committee**
 - **Presentation of Three (3) Recommendations**
 - b. Implementation Strategy Committee**
 - **Discussion of Draft Legislative Report**
 - c. Data Collection Committee**
 - d. Conservation and Efficiency Committee**

Agenda (cont.)

7. EGLE Update

8. Future

a. 2024 Meeting Dates (at Con Hall unless others offer to host) (*Quorum critical meetings)

- December 10, 2024

b. Formats

c. Quorum

9. Open Comments (Three Minute Limit)

10. Motion to Adjourn

1. Welcome



2. Roll Call



3. Approval of Minutes –Roll Call Vote



4. Approval of Agenda—Roll Call Vote

5. Public Comment

3 Minute Limit

6. Committee Chairs Reports

- A. Models Committee
 - Presentation of Three (3) Recommendations
- B. Implementation Committee
 - Discussion of the Draft Legislative Report
- C. Data Collection Committee
- D. Conservation and Efficiency Committee

Models Committee

Update

Models Committee Recommendations:

- 1) Fund a project to investigate streamflow depletion in an area with significant large quantity withdrawals using detailed data collection and modeling.
 - The proposal is fleshed out and budget added.
- 2) Revise timeline requirement for Site-Specific Reviews (SSRs)
 - The proposed language is provided.
- 3) Improve the streamflow depletion calculation in the WWAT.
 - The proposal doesn't need to go into this year's report, there are not funding requests. We will advance the proposal next year.

Implementation Committee

Update

Data Collection Committee

Update

Conservation and Efficiency Committee

Update

Water Conservation and Efficiency Committee

- Met in early November
 - Continued work to investigate strategies for overcoming barriers for electricity availability for irrigation pumps for pump retrofit funding programs
- Implementing existing projects funded by WUAC
 - Water Conservation BMP Project
 - Alliance for Water Efficiency (AWE) doing stakeholder engagement, good progress
 - AWE will present their work to WCEC early in 2025
 - Water Conservation and Efficiency Practices in Agriculture
 - Educators will present at many winter meetings
 - Developing guides for specialty crops and livestock
- Responded to request for updates for the for 2024 WUAC report to the legislature

Water Conservation and Efficiency Committee

- Climate Migration and Water Use Research Project Concept
 - Important to understand current and future patterns in population movement and land uses and the potential impacts on water resources and water use.
 - Gather and synthesize current research, data, and trends on climate migration, demographics, economic development, land uses, and water sectors and map different potential scenarios to provide information on how these potential changes may affect water resources, water use, and water demand in Michigan.
- Concept still in development
- Potential funding for research from the Michigan Great Lakes Protection Fund



MICHIGAN DEPARTMENT OF
ENVIRONMENT, GREAT LAKES, AND ENERGY

7. Program Update

Water Use Advisory Council

Outline

- GRMD hiring updates
- 2020 Recommendations
- Michindoh Aquifer drilling update
- Large quantity withdrawal trends
- Part 327 metrics (calendar year)
- Questions

GRMD Hiring Updates

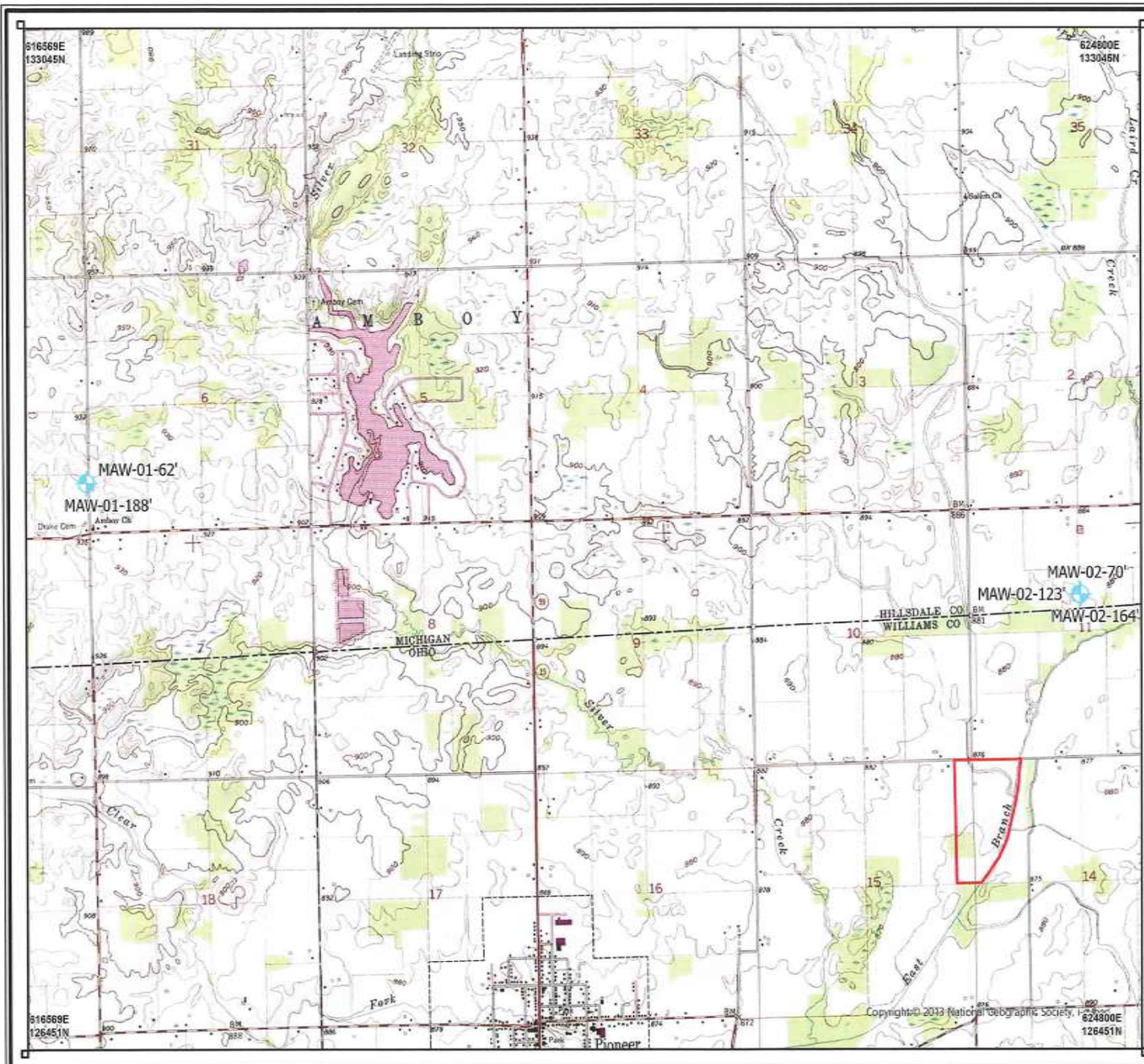
- Groundwater & Geological Services Section (GGSS) Manager
- Geologist 9-11 (GIS Support) in GDU
- Geologist 9-11 (SSR) in WUAU

2020 Recommendations

- New Joint Funding Agreement with USGS:
 - \$4.3M total
 - 15 New stream gages
 - Aerial magnetic survey
 - Drilling new monitoring wells
 - Groundwater modeling
- Data gaps analysis
- Updating WWAT aquifer properties

Michindoh Aquifer Drilling

- RRD Geological Services Section report
 - Maps
 - Geologist's field notes
 - Well construction & soil boring logs
 - Gamma ray logs
- 5 wells drilled:
 - 62' & 188' deep wells at Amboy Township Hall
 - 70', 123', & 164' deep wells near MI/OH border



LEGEND

-  Monitoring Well
-  Aquiboundary East Wellfield



DATUM - NAD83
 PROJECTION: MICHIGAN GEOREF
 NORTHING AND EASTING COORDINATES (IN METERS)
 ARE IN CORNERS OF MAP

AERIAL PHOTO SOURCE: MISAIL Imagery

0 145 290 580 Meters

0 5001,000 2,000 Feet

1:25,970



Michindoh Aquifer Investigation

WALDRON, HILLSDALE COUNTY

Monitoring Well Locations

GEOLOGIST
 Olivia Sly
 Geological Services
 Section



CREATION DATE
 October 2024

Remediation and
 Redevelopment
 Division

FIGURE 2

Real-Time Groundwater Elevation Data

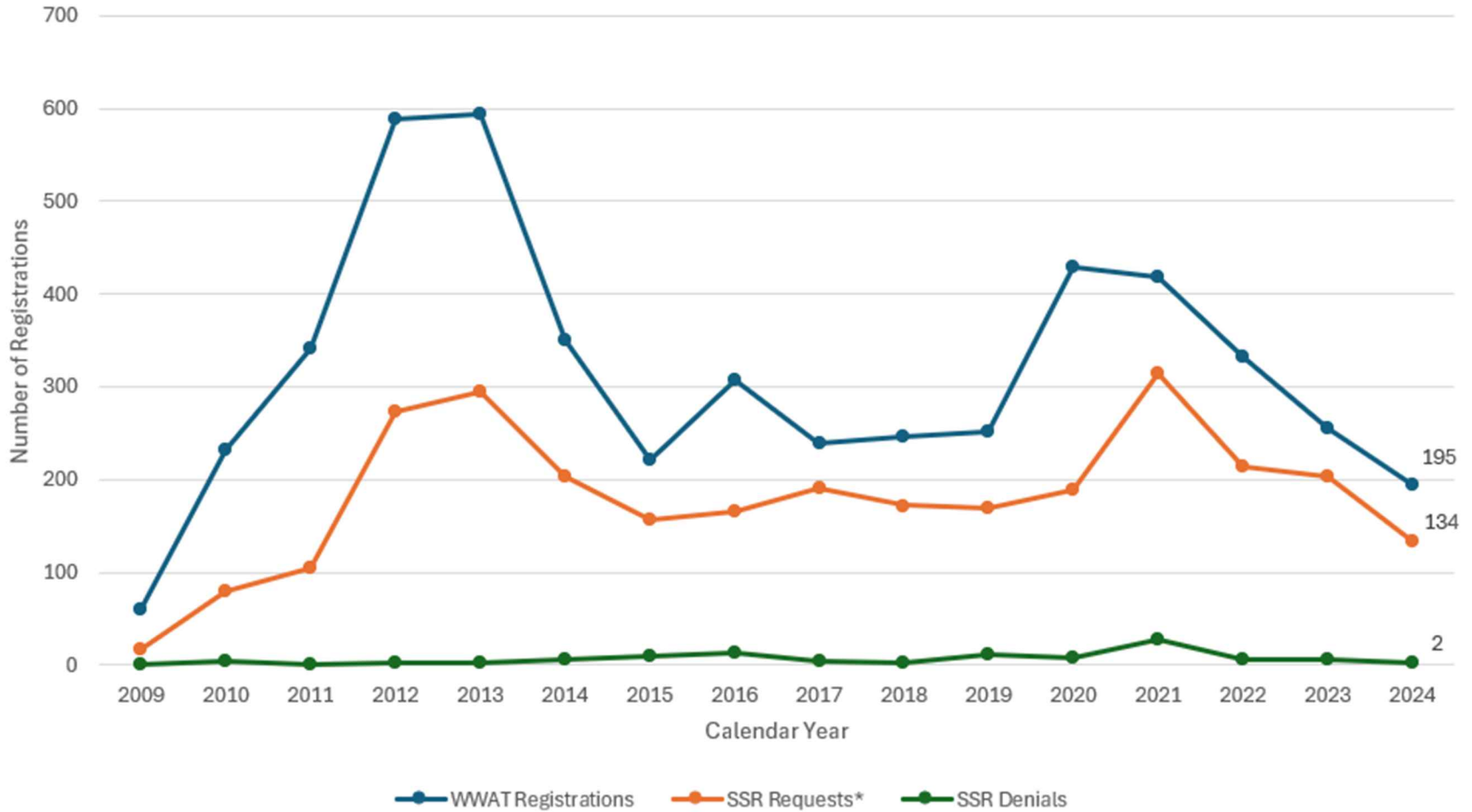
- MAW-01-62' (USGS label MAW-01-S)

<https://waterdata.usgs.gov/monitoring-location/414243084353301/#parameterCode=72019&period=P7D&showMedian=true>

- MAW-01-188' (USGS label MAW-01-D)

<https://waterdata.usgs.gov/monitoring-location/414243084353302/#parameterCode=72019&period=P7D&showMedian=true>

Large Quantity Withdrawal Trends



Pre-Screening Review Metrics

January 2, 2024, to November 7, 2024

- 21 Total Pre-Screening Reviews Completed
 - 6 Zone A
 - 2 Zone A/Geology Pass
 - 9 Zone B
 - 2 Zone C
 - 0 Zone D
 - 2 Baseline Capacity Replacements

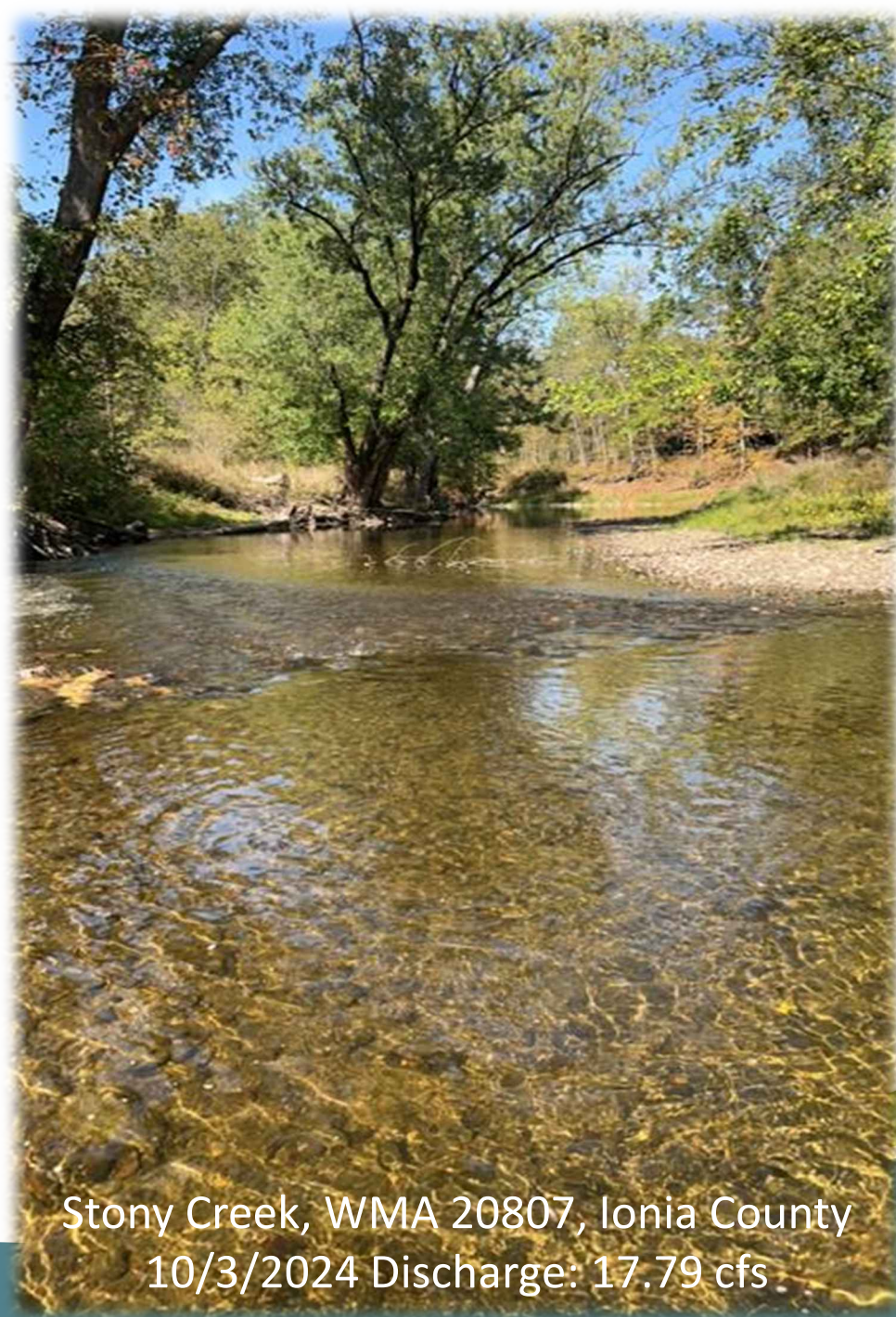
327 Permit Metrics

As of November 1, 2024:

- 1 permit issued
- 7 application reviews pending

Compliance Metrics January 2024 to November 1, 2024

- Compliance Communications 93
 - After the Fact Registration 4
 - Missing Pump Information Requests 1
 - Revised Registrations 62
 - Installation Verifications 26
- First Violation Notices 15



Stony Creek, WMA 20807, Ionia County
10/3/2024 Discharge: 17.79 cfs

Questions?

Jim Milne

Water Use Assessment Unit

EGLE Geologic Resources Management Division

517-285-3253

milnej@michigan.gov

Michigan Department of
Environment, Great Lakes, and Energy

800-662-9278

Michigan.gov/EGLE



Follow us at: Michigan.gov/EGLEConnect

8. Future

- a. **2024 Meeting Dates** (at Con Hall unless others offer to host)
(*Quorum critical meetings)
 - December 10, 2024
- b. **Formats**
- c. **Quorum**

9. Open Comments

3 Minute Limit

10. Motion to Adjourn