



MICHIGAN DEPARTMENT OF
ENVIRONMENT, GREAT LAKES, AND ENERGY

Water Use Advisory Council

June 10, 2025

WUAC Chair Order

June, 2025

- Laura Campbell, Michigan Farm Bureau (1-5)
- Bryan Burroughs, Michigan Trout Unlimited (6)
- Pat Staskiewicz, Michigan American Water Works Association (7-11)

Agenda

Water Use Advisory Council (WUAC) Meeting

Hosted by the Department of Environment, Great Lakes, and Energy (EGLE)

Tuesday, June 10, 2025

1:00 p.m.- 4:00 p.m.

Lee Walker Conference Room, North Atrium, Constitution Hall
525 West Allegan, Lansing, MI 48933

Remote Option Available Via Teams

[Click here to join the meeting](#)

Or call in (audio only)

+1 248-509-0316,,301489663# United States, Troy

Phone Conference ID: 301 489 663#

Agenda (cont.)

- 1. Welcome**
- 2. Roll Call**
- 3. Approval of Minutes-Roll Call Vote Discussion**
- 4. Approval of Agenda-Roll Call Vote Discussion**
- 5. Public Comment (Three Minute Limit)**
- 6. Committee Chairs Report**
 - a. Conservation and Efficiency Committee**
 - b. Data Collection Committee**
 - c. Models Committee**
 - d. Implementation Committee**

Agenda (cont.)

7. Legislative Report Recommendations Outreach Plan

8. EGLE Update

a. WWAT Update

9. Future

a. 2025 Meeting Dates (at Con Hall unless others offer to host) (*Quorum critical meetings)

- August 12
- October 14
- December 9

b. Formats

c. Quorum

10. Open Comments (Three Minute Limit)

11. Motion to Adjourn

1. Welcome



2. Roll Call



3. Approval of Minutes –Roll Call Vote



4. Approval of Agenda—Roll Call Vote

5. Public Comment

3 Minute Limit

6. Committee Chairs Reports

Conservation and Efficiency Committee

Update

Water Conservation and Efficiency Committee

- Committee met on June 5
- Water Conservation BMP Project (2020)
 - Alliance for Water Efficiency (AWE) Project Team presented draft findings to the Committee
 - AWE found different motivators and levels of engagement across each industry
 - Generally, 2008 water conservation BMPs are strong, but there are opportunities to innovate, esp. in emerging industries
 - Highlighted a need to increase education and outreach on this issue to increase general awareness of value of conserving water
 - AWE is preparing draft final report for committee review and comment in June
 - Final AWE presentation to WUAC at August 12th meeting

Water Conservation and Efficiency Committee

- Water Conservation & Efficiency Practices in Ag (2020)
 - Dr. Jeannine Schwehofer, MSU-Extension
- Ag Irrigation Water & Energy Efficiency Pilot Program (2022)
 - WCEC reviewed project, EGLE incorporating feedback
 - Grant in development
- State Climatologist, Dr. Jeff Andresen will be presenting on climate trends and their impacts on agriculture at August 7 committee meeting

Data Collection Committee

Update

Models Committee

Update

Implementation Committee

Update

7. Legislative Report Recommendations Outreach Plan



MICHIGAN DEPARTMENT OF
ENVIRONMENT, GREAT LAKES, AND ENERGY

8. Program Update

a. Including a WWAT Update

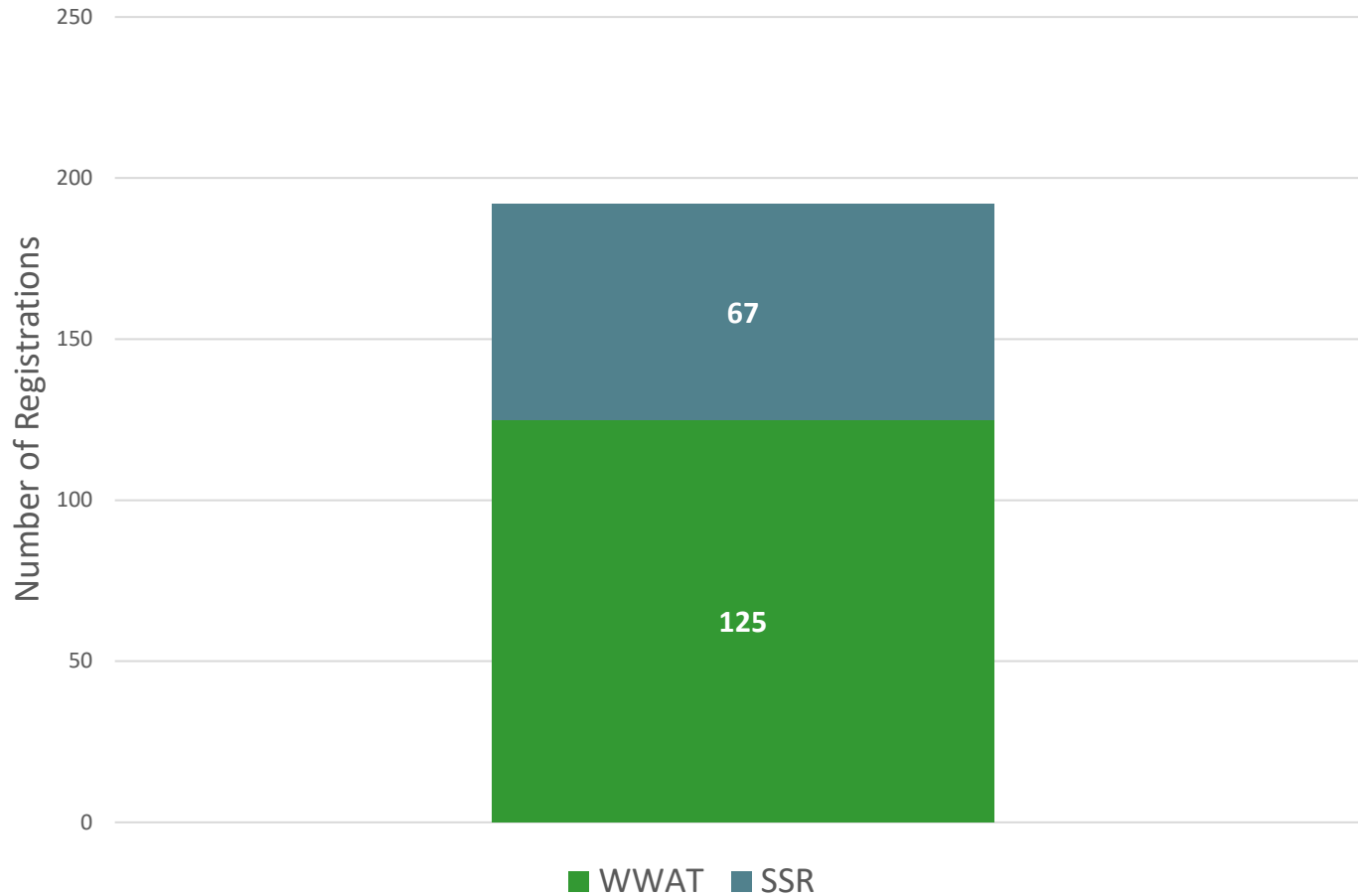
Outline

- Part 327 Metrics
 - Permits
 - Pre-screening Reviews
 - WWAT & SSR Registrations
 - SSR Timeliness
 - SSR Categories
- WMA Status Update
- Statewide/National Groundwater Monitoring Network Updates
- WWAT/Streamflow Depletion Tool Updates
- WUAU Personnel Notes

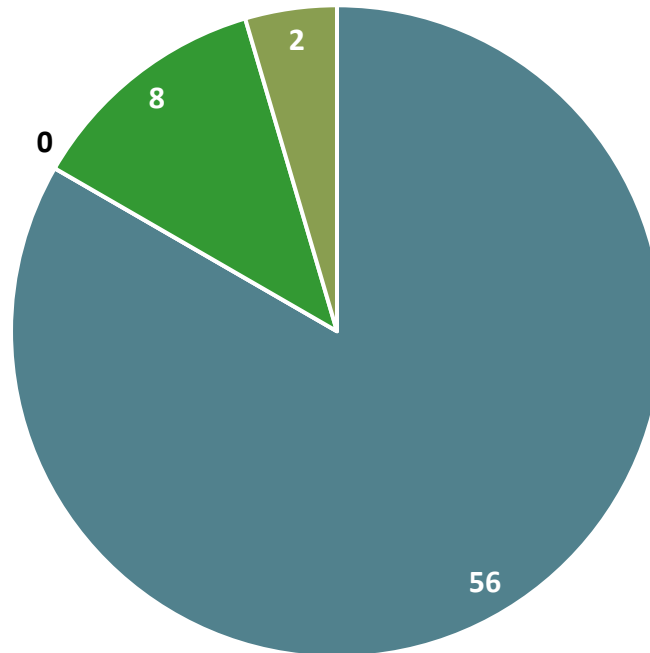
327 Metrics

- 327 Permits: 1 issued; 2 under review
- Pre-screening reviews:
 - 9 total
 - 4 Zone A, 2 Zone B, 1 Zone C, 1 Zone D
 - 1 pending
- Compliance Numbers: 18 Communications
 - 14 Revised Registrations
 - 4 Installation Verifications

Registrations Requested in 2025: WWAT & SSR

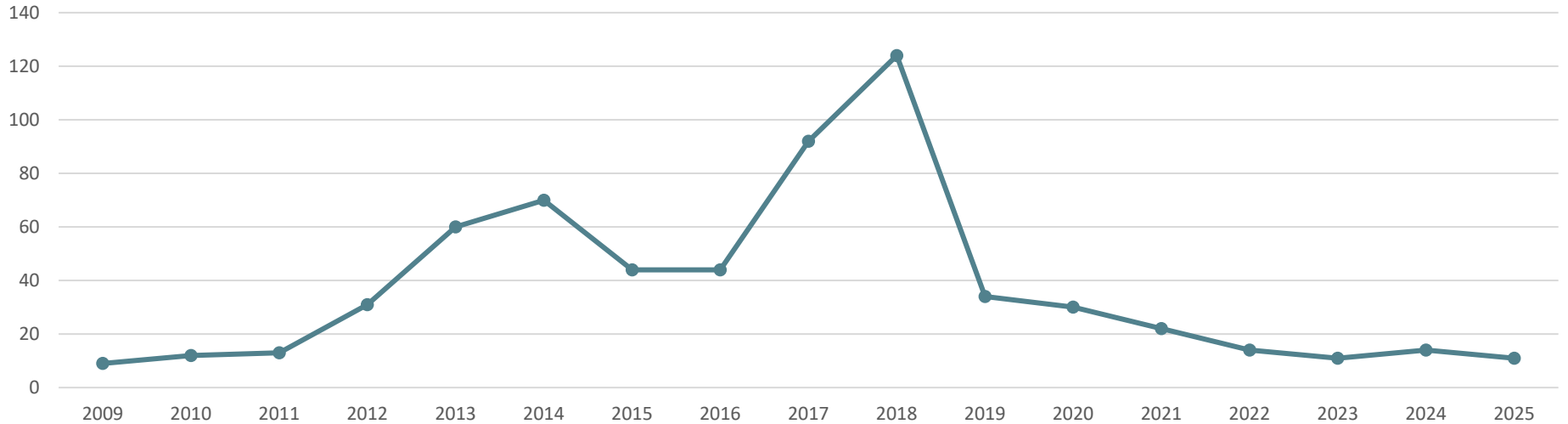


Total SSRs Received and Determinations Made During 2025

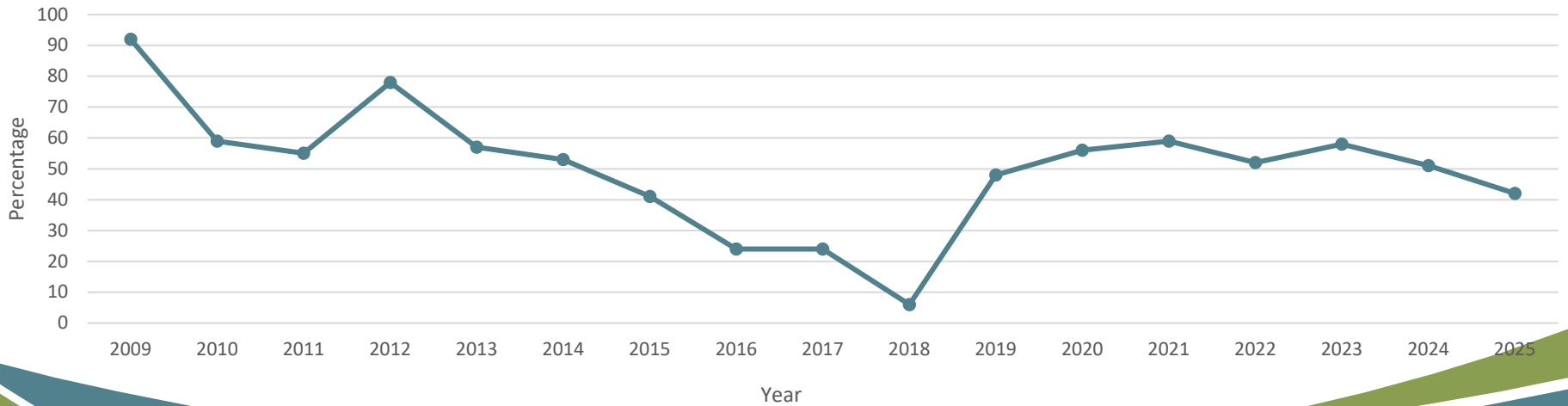


■ SSRs Authorized ■ Denied ■ Retracted ■ Still Pending

Average Number of Business Days from Receipt of SSR Request



Percentage of SSRs Completed within 10 Business Days



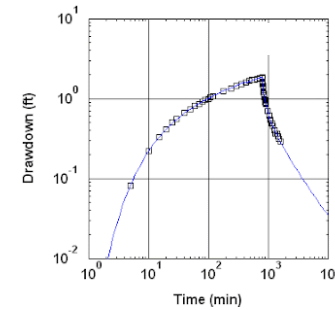
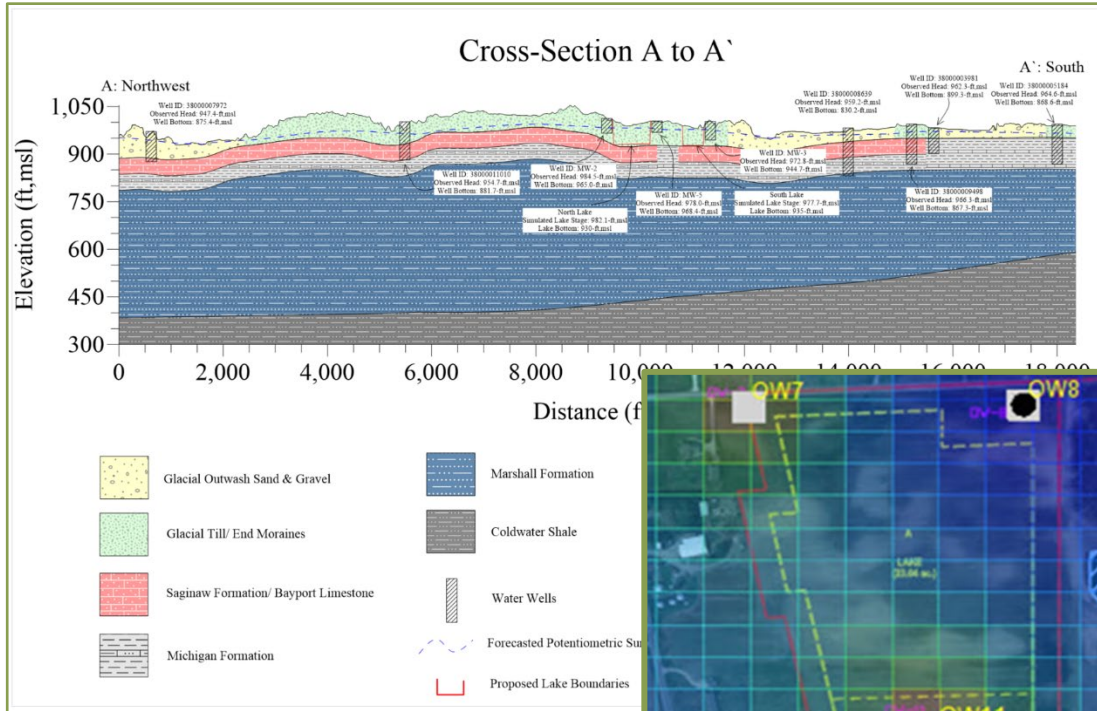
2025 SSR Categories

- 11 SSRs received as of 6/3/2025:
 - 8 Administrative
 - 3 Desktop
 - 2 baseline capacity replacements
 - 3 Zone A
 - 3 Zone B
 - 3 Zone C
- 9 of 11 completed within 10 days
- Other 2 completed within 12 days due to staff workloads

Pending (> 10 days) SSRs

- 10 SSRs past 10-day deadline:
 - 8 categorized as Technical
 - 2 debiting Skunk Creek/Wolf Creek WMAs GDU modeling
 - 4 debiting Prairie River, WMA 20781, pending DNR stream reclassification study
 - 1 in Dickinson Creek, WMA 3452
 - 1 in Osborn Drain, Cass & Van Buren Counties
 - 2 categorized as Desktop
 - Both involve replacing existing baseline &/or registered capacity

EGLE Data Review

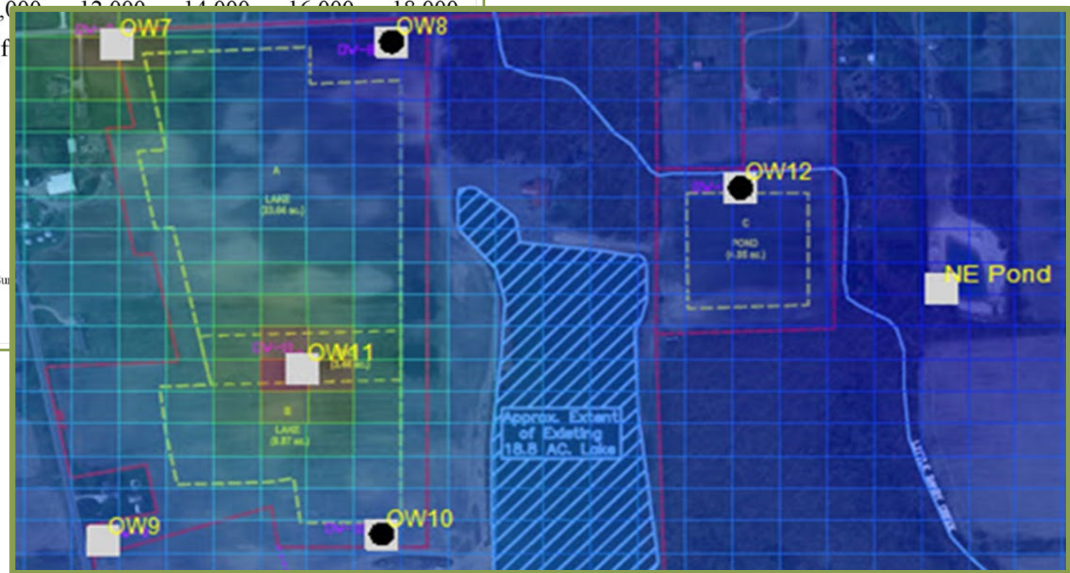


Obs. Wells
 □ r = 100 ft

Aquifer Model
 Confined

Solution
 Theis

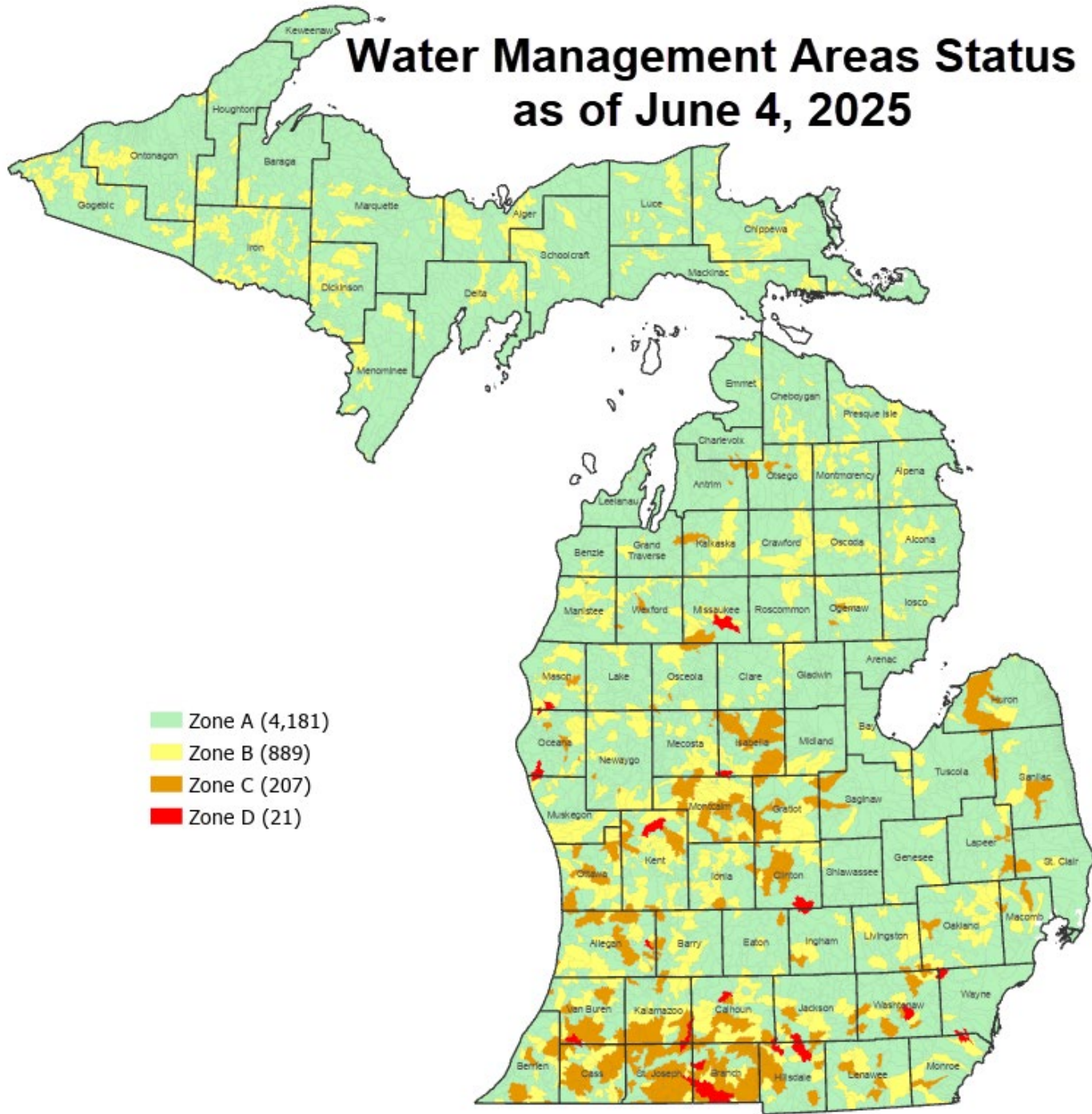
Parameters
 T = 30.96 ft²/min
 S = 0.06666
 Kz/Kr = 1.
 b = 100. ft



Sieve #	Size (mm)	Weight Retained	Percent Retained	Cum. % Retained	Cum. % Passing	Comments
30	0.595	0.7	0.70	0.7	99.3	Medium sand retained on #30
40	0.425	2.9	2.9	3.6	96.4	Medium sand retained on #40
50	0.3	12.3	12.3	15.9	84.1	Medium sand retained on #50
70	0.21	31.2	31.2	47.1	52.9	Medium sand retained on #70
100	0.15	27.4	27.4	74.6	25.4	Fine sand retained on #100
140	0.105	13.6	13.6	88.2	11.8	Fine sand retained on #140
200	0.075	6.4	6.4	94.6	5.5	Fine sand retained on #200
270	0.053	2.9	2.9	97.5	2.5	Fines retained #270
Pan	-	2.4	2.4	99.9	0.1	Fines passing #270 (silt &/or clay)

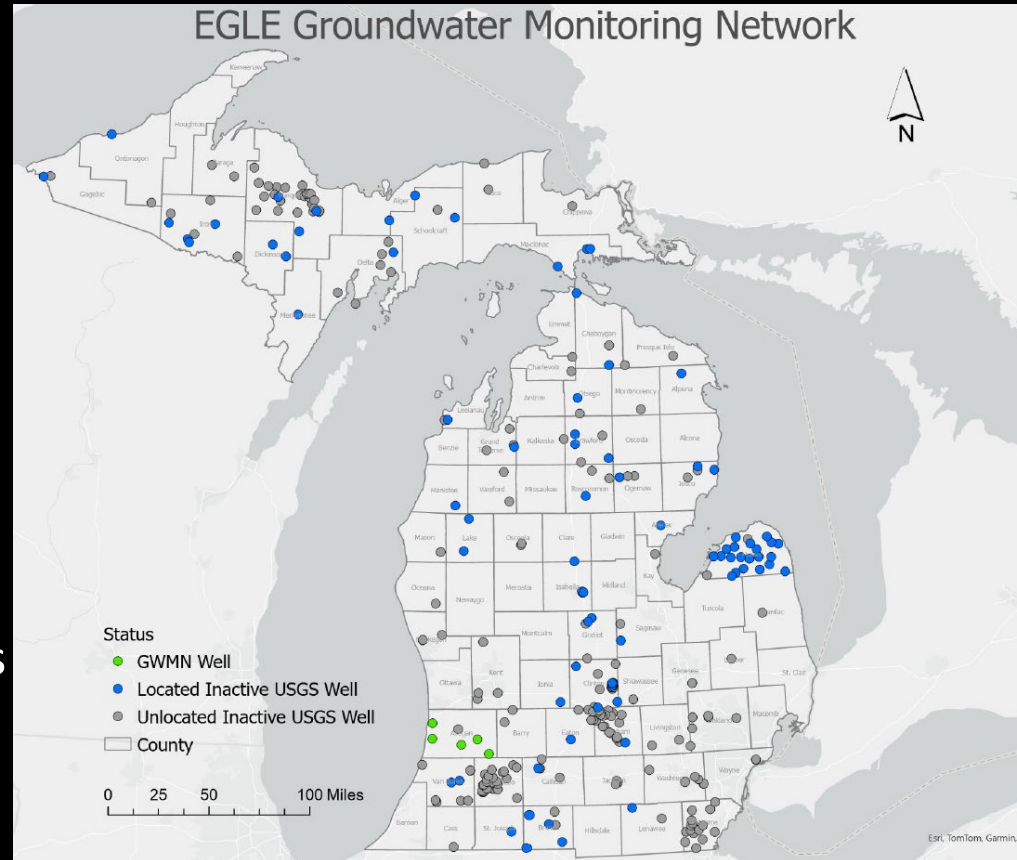
Recovered weight = 99.9 grams
 Breakdown by percent weight: Sand: 94.7% Fines: 5.3%
 Gravel: 0.0%
 Cu = D₁₀ / D₃₀ = 2.32
 Cc = (D₃₀)² / (D₁₀ x D₆₀) = 1.38

Water Management Areas Status as of June 4, 2025



Statewide Groundwater Monitoring Network

- Preexisting, inactive USGS wells:
 - 86 located in the field
 - 225 unlocated
- EGLE is working on an RFP to contract the well rehabilitation work:
 - Resurveying wells
 - Completing repairs
 - Redeveloping wells
 - Searching for unlocated wells
- Wells not be used in network will be properly abandoned/plugged.



Water Withdrawal Assessment Tool Modernization Update

Hannah Arnett

ArnettH2@Michigan.gov

517-599-9767

Megan Cameron

CameronM6@Michigan.gov

517-285-0126

WWAT HOME



Welcome to EGLE's Water Withdrawal Assessment Tool (WWAT), part of Michigan's fulfillment of the Great Lakes Compact obligations to conserve and manage our water resources.

- Michigan law prohibits water withdrawals from causing excessive depletion of stream and river flows, called an Adverse Resource Impact (ARI).
- The WWAT estimates the potential impact a water withdrawal may have on nearby streams and rivers relative to the ARI limit.
- Landowners planning a new or increased withdrawal using one or more pumps capable of at least 70 gallons per minute must obtain approval from EGLE prior to operation.
- Use of the WWAT is required for approval of wells or intakes directly from a stream, river, or pond less than 5 acres.
- Withdrawal approval is attained by a determination of no ARI.
- Approved withdrawals receive an EGLE Water Withdrawal Registration.
- Withdrawals must be operational within 18 months after approval or the Registration becomes void.

Important links

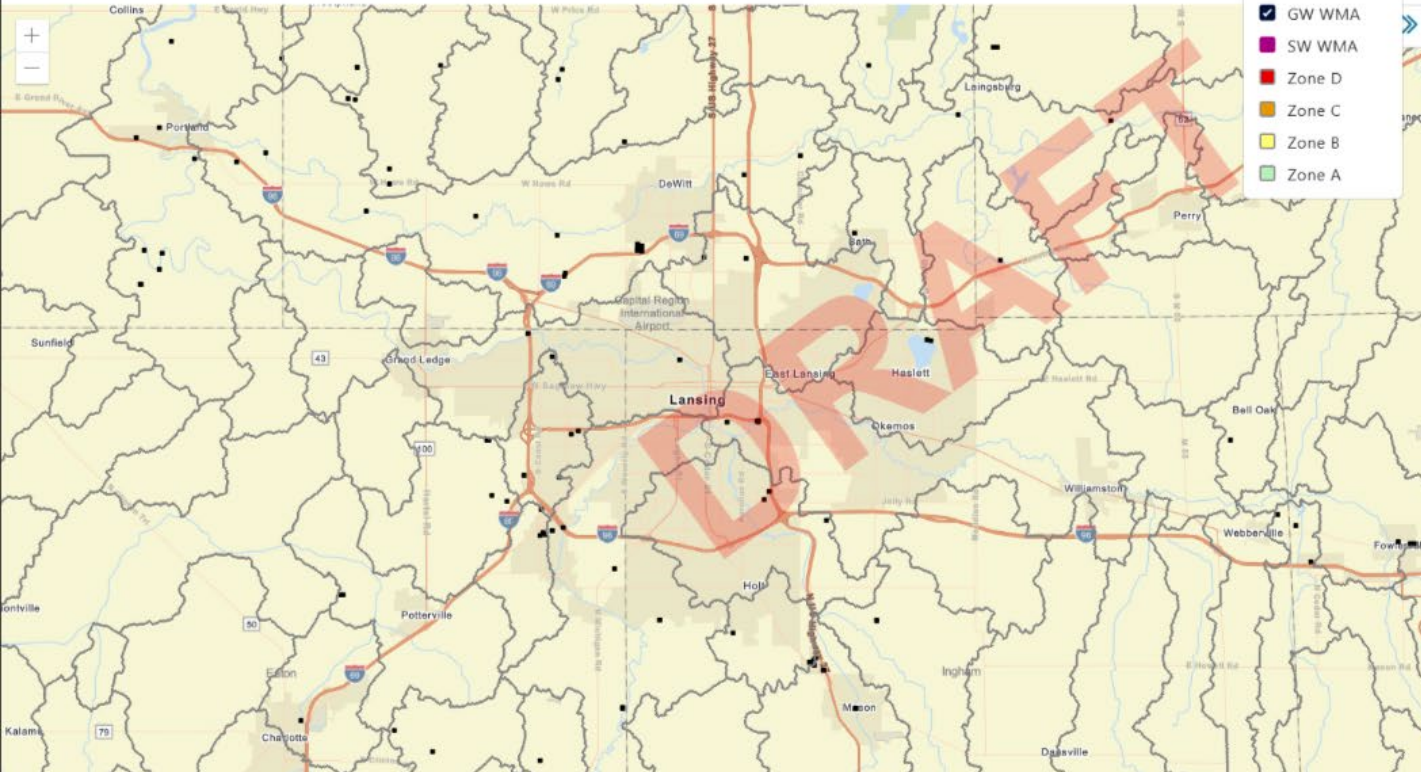
[Additional information about the WWAT](#)

[Additional information about the EGLE Water Use Program and the Great Lakes Compact](#)

[Contact the EGLE Water Use Program](#)

Mi Login

Map Layer



WMA Registrations Streams County Township Section

- GW WMA
- SW WMA
- Zone D
- Zone C
- Zone B
- Zone A

[Run the Tool](#)

To evaluate a proposed withdrawal, begin by identifying its location on the map. Then, select the 'New Withdrawal' button below and click on the map at the intended location.

[New Withdrawal](#)

[Find a Location](#)

[Data Exports](#)

- New Map Layout
- Release 1 expected Mid-September

Please Reach Out

Lena Pappas

PappasL4@Michigan.gov

517-245-8119

Jim Milne

MilneJ@Michigan.gov

517-285-3253

Adam Wygant

WygantA@Michigan.gov

517-897-4828

Hannah Arnett

ArnettH2@Michigan.gov

517-599-9767

Megan Cameron

CameronM6@Michigan.gov

517-285-0126

WUAU Personnel Notes

- Posting to fill Geologist 12 vacant SSR position closes 6/9/2025
- Marian Maier's leaving WUAU.

Michigan Department of
Environment, Great Lakes, and Energy

800-662-9278

Michigan.gov/EGLE



Follow us at: Michigan.gov/EGLEConnect

9. Future

- a. **2025 Meeting Dates** (at Con Hall unless others offer to host)
(*Quorum critical meetings) (Teams meetings to be scheduled)
 - August 12, 2025
 - October 14, 2025
 - December 9, 2025
- b. **Formats**
- c. **Quorum**

10. Open Comments

3 Minute Limit

11. Motion to Adjourn