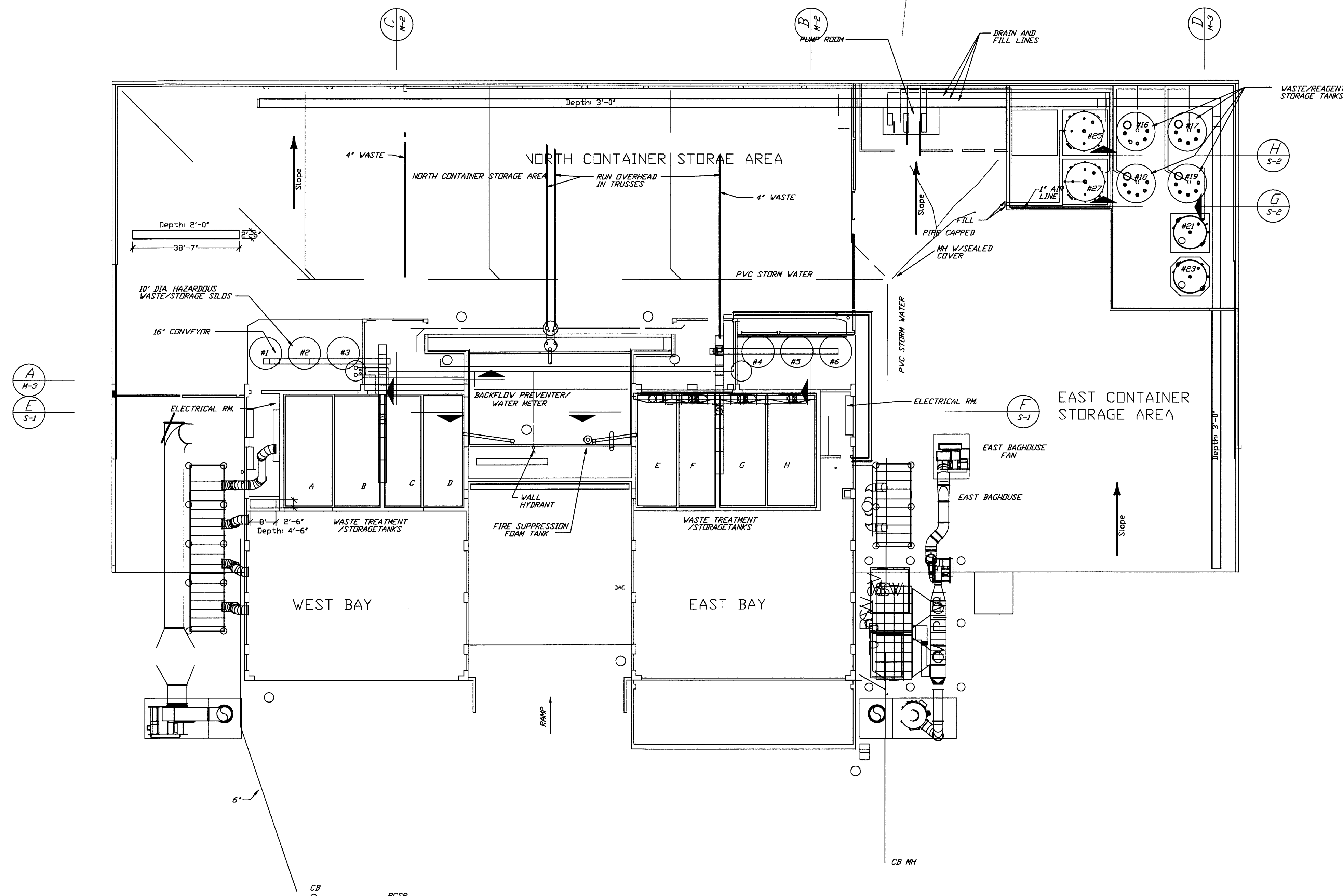


FILENAME:	Truck Dock Update
PROJ. FILE:	Remove/ proposed capacity from tank form
Lic	
DATE: 4/27/04	
SHEET	OF
SCALE: 1" = 35'-0"	
DRN BY: CAG	

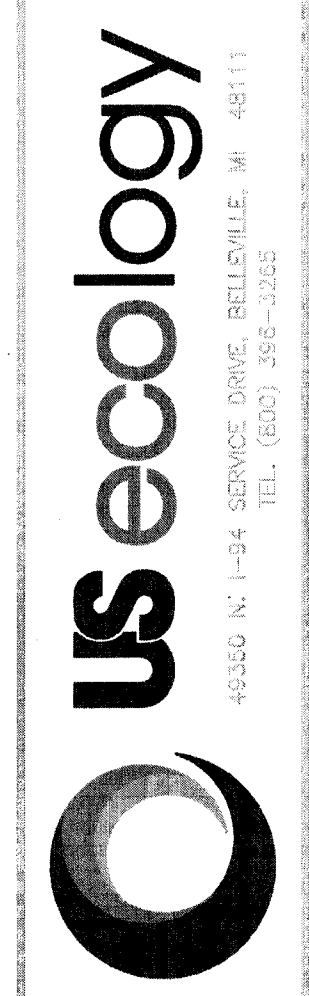
REVISIONS:	
A	11/17/04
B	4/22/05
C	1/8/18
D	
E	

MICHIGAN DISPOSAL WASTE TREATMENT PLANT
OVERALL MECHANICAL PLAN

60350 N. I-94 SERVICE DRIVE, BELLEVILLE, MI 48111
TEL. (800) 399-3225



LOCATION PLAN
 SCALE: 1/16" = 1'-0"
 LEGEND

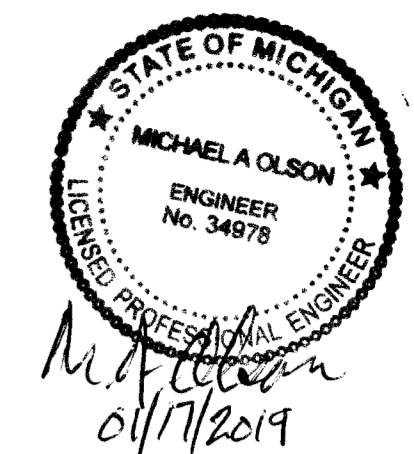


License Update	4/27/04
Removed contact from tank farm	8/22/06
NOISE	
A	
B	
C	
D	
E	

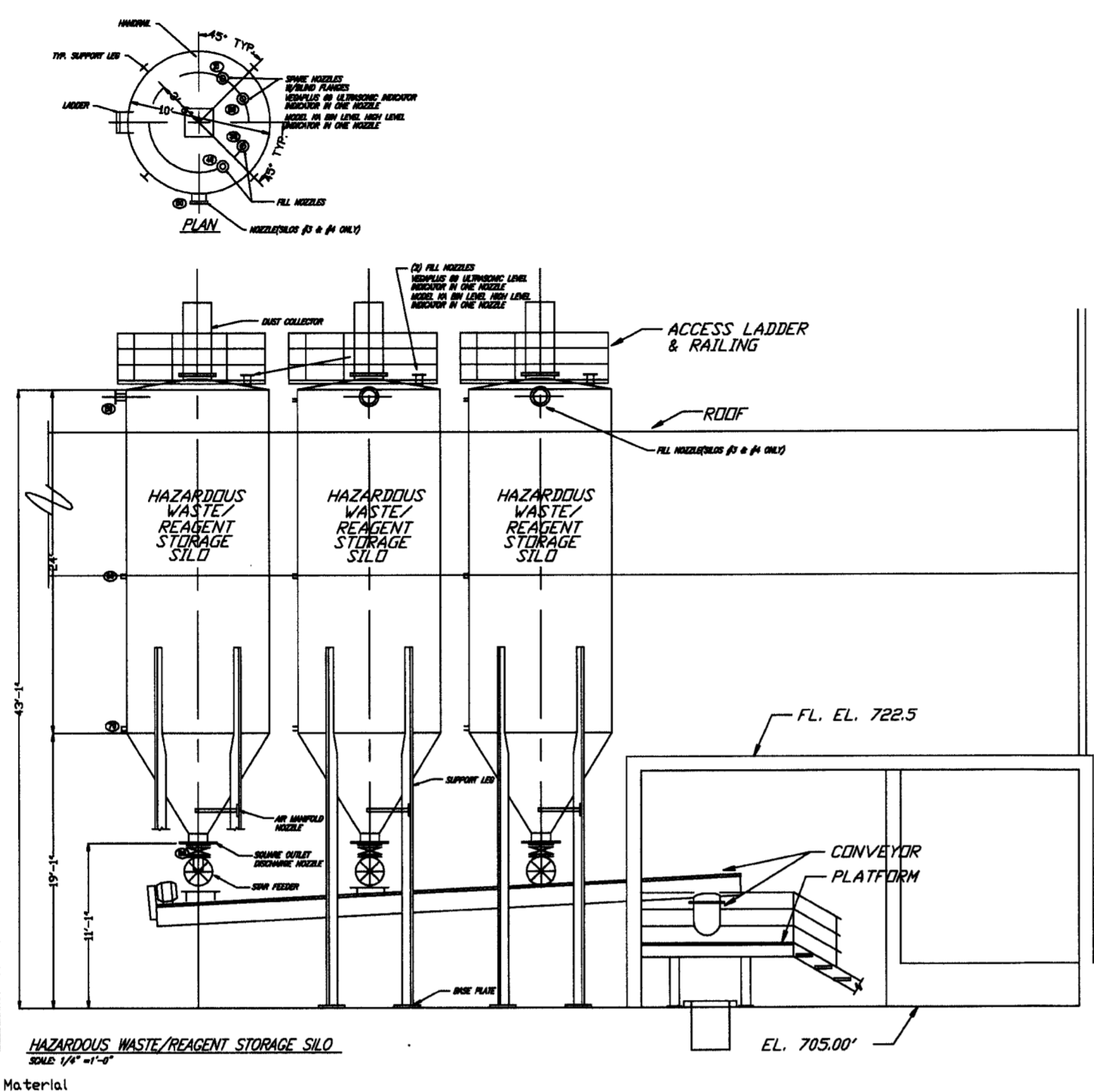
FILENAME:	
SCALE:	1"=20'-0"
DATE:	3/4/15
DRN:	BY: CAC
SHEET:	OF

PROJ. FILE: Lic
 MICHIGAN DISPOSAL WASTE TREATMENT PLANT
 OVERALL MECHANICAL PLAN

MICHIGAN DISPOSAL WASTE TREATMENT PLANT



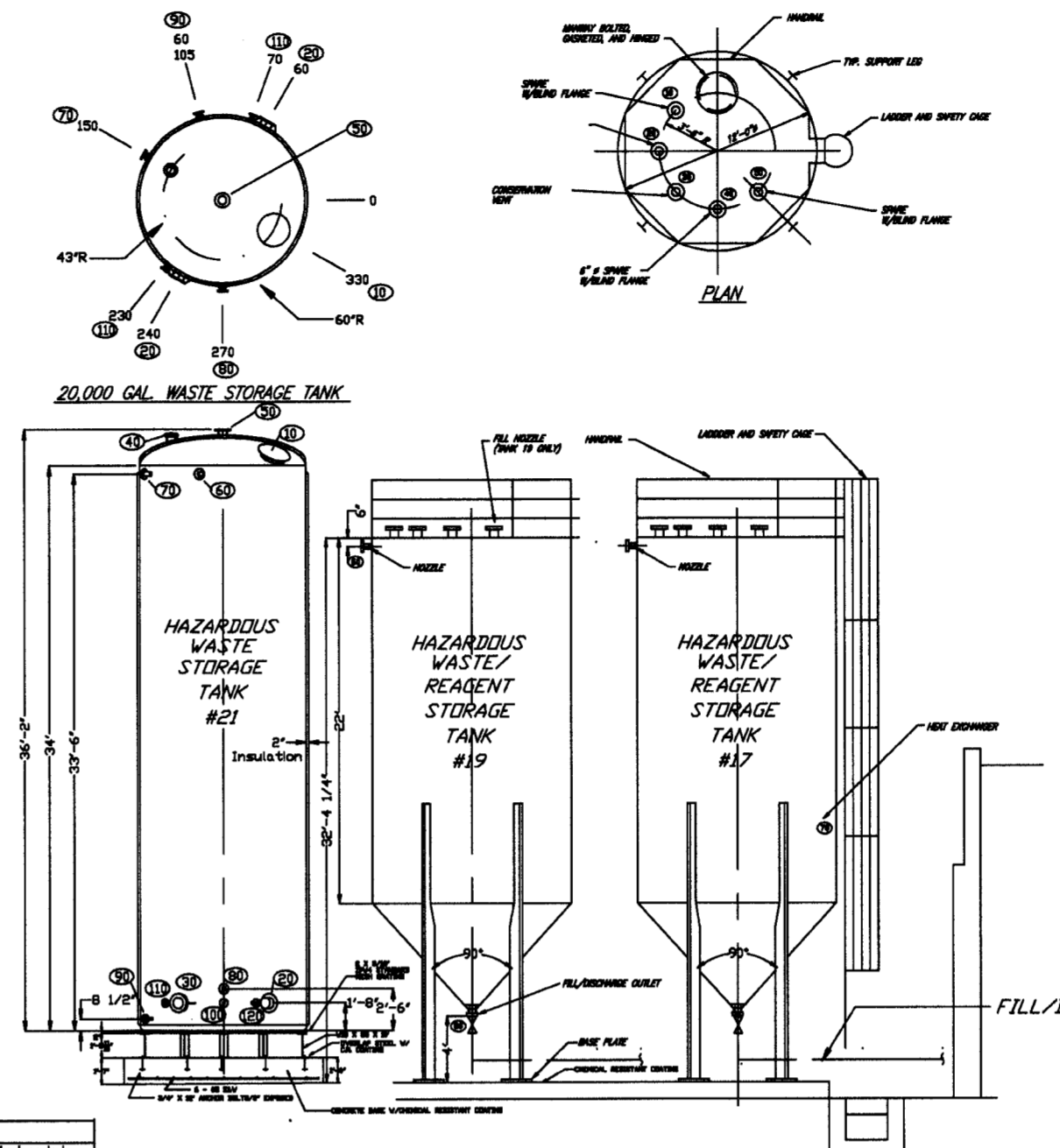
- SPECIFICATIONS**
- 1) Manufacturer: Imperial Calumet Industries
 - 2) Model: 66-115-10x43-1 High
 - 3) Maximum Material Density: 115 lb/cft
 - 4) Capacity: 2026 cft
 - 5) Maximum Tonnage: 116.5 tons
 - 6) Maximum Operating Pressure: 6 oz/sq in
 - 7) Maximum Operating Vacuum: 0.4 oz/sq in
- CONSTRUCTION**
- Roof
 0.25 inch steel
 Exterior Coating: Direct-To-Metal Paint
 Interior Coating: None
- Sides
 0.25 inch steel
 Exterior Coating: Direct-To-Metal Paint
 Interior Coating: None
- Cone
 0.25 inch steel
 Exterior Coating: Direct-To-Metal Paint
 Interior Coating: None



SILOS LOOKING NORTH
SECTION A
 SCALE: 1/8" = 1'-0"

Item	Qty	Size	Rating	Description/Service	Material
10	1	5	125	Flange - Level transmitter	Steel
20	1	5	125	Flange - High Level Switch	Steel
30	1	5	125	Flange - Spare	Steel
40	1	5	125	Flange - Spare	Steel
50	1	6	125	Flange - Fill	Steel
60	1	3	125	Nipple - Spare	Steel
70	1	3	125	Nipple - Spare	Steel
80	1	16	125	Flange - Discharge	Steel

- SPECIFICATIONS**
- 1) Capacity: 18,000 U.S. Gallons
 - 2) Specific Gravity: Design 1.54 maximum
- LAMINATE CONSTRUCTION**
- Resin System
 Premium Grade Co-Resyn VE-8300 Vinyl
 Ester Resin throughout
 Double Nexus Synthetic Vell In Corrosion Barrier
 Co/MeX Peroxide with post cure
 UV Absorber In Exterior Resin Layer
- Dome Top:
 0.388 inch Total
- Sidewall Top Section:
 0.384 inch Total
- Flat Bottom:
 0.265 inch Total



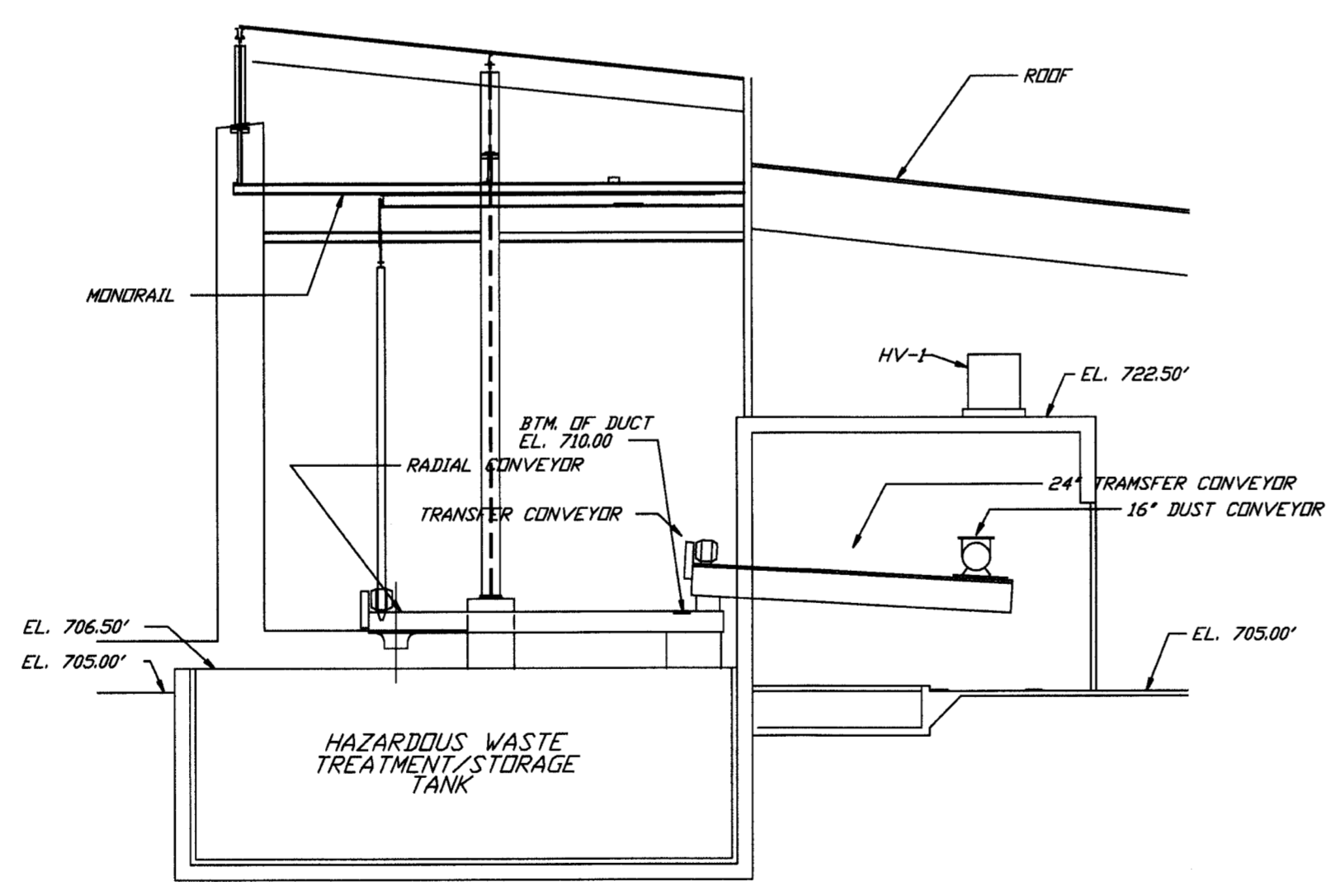
VERTICAL TANKS LOOKING WEST
SECTION D
 SCALE: 1/8" = 1'-0"

Item	Qty	Size	Rating	Description/Service	Material
10	1	24		Manway Assembly	FRP
20	1	8	50	HL Flange - w/Conical Gusset/Heater	FRP
30	1	8	50	HL Flange - w/Conical Gusset	FRP
40	1	6		Mushroom Vent	FRP
50	1	6	75	HL Flange - w/Conical Gusset/Level transmitter	FRP
60	1	3	125	HL Flange - w/Conical Gusset/Level switch	FRP
70	1	3	125	HL Flange - w/Conical Gusset/Fill	FRP
80	1	3	125	HL Flange - w/Conical Gusset/Discharge	FRP
90	1	2	125	HL Flange - w/Conical Gusset/Drain	FRP
100	1	2	125	HL Flange - w/Conical Gusset	FRP
110	1	2	125	HL Flange - w/Conical Gusset/Thermocouple	FRP
120	1	2	125	HL Flange - w/Conical Gusset	FRP

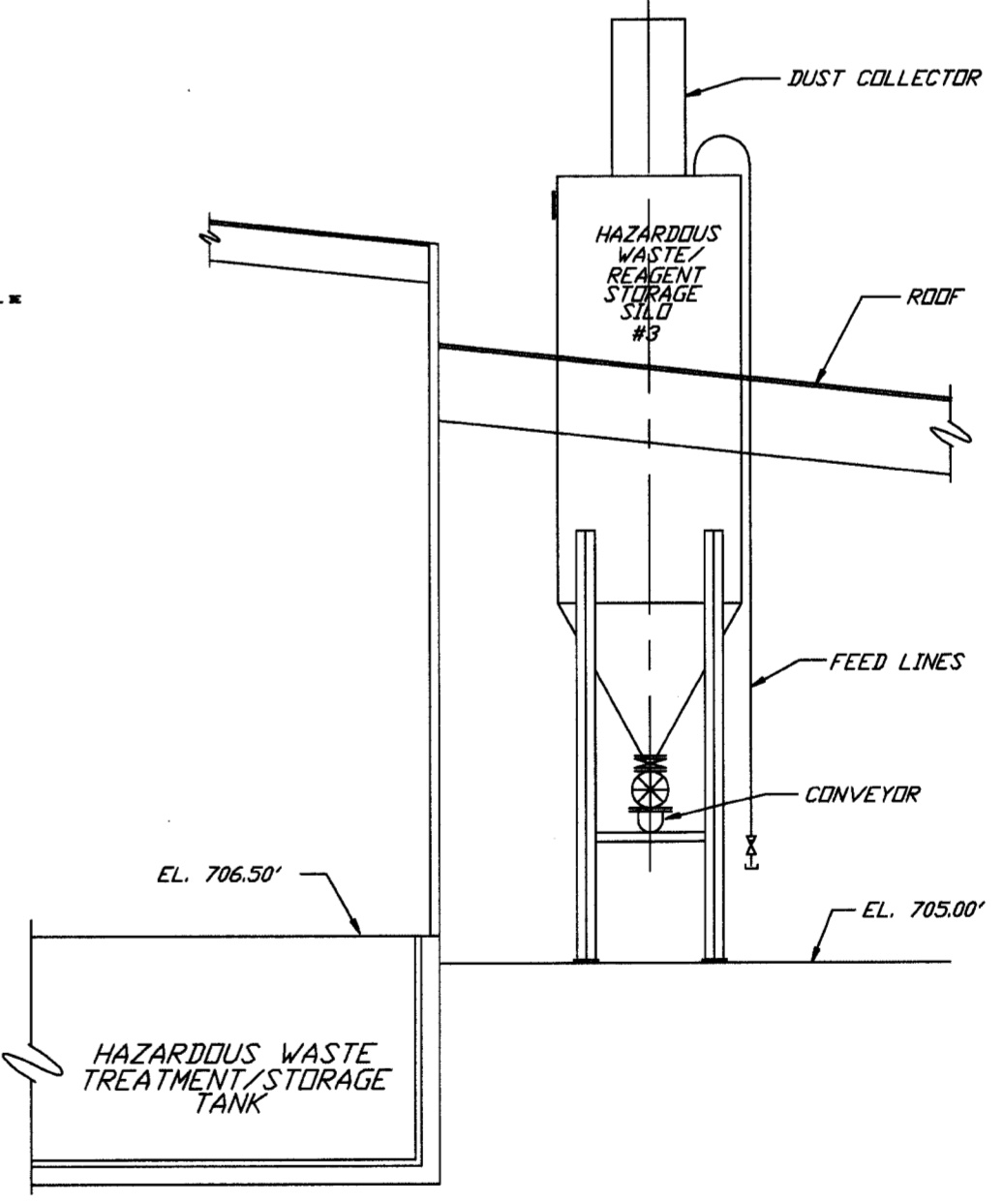
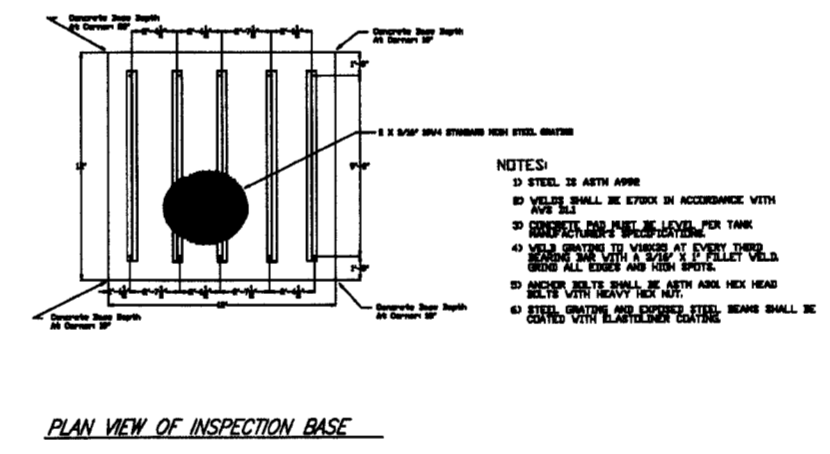
- SPECIFICATIONS**
- 1) Manufacturer: Imperial Calumet Industries
 - 2) Model: 15-65-12X35-4-2H4-C4
 - 3) Maximum Material Density: 63 lb/cft
 - 4) Capacity: 2770 cft
 - 5) Maximum Tonnage: 87.3 tons
 - 6) Maximum Operating Pressure: 6 oz/sq in
 - 7) Maximum Operating Vacuum: 0.4 oz/sq in
- CONSTRUCTION - TANKS 16 & 17**
- Roof
 0.25 inch steel
 Interior Coating: 40 mls Carboline 4300
 Exterior Coating: None
- Sides
 0.25 inch steel
 Interior Coating: 40 mls Carboline 4300
 Exterior Coating: None
- Cone
 0.25 inch steel
 Interior Coating: 40 mls Carboline 4300
 Exterior Coating: None

- CONSTRUCTION - TANKS 18 & 19**
- Roof
 0.25 inch steel
 Interior Coating: 25 mls Blone TL-45-S
 Exterior Coating: None
- Sides
 0.25 inch steel
 Interior Coating: 25 mls Blone TL-45-S
 Exterior Coating: None
- Cone
 0.25 inch steel
 Interior Coating: 25 mls Blone TL-45-S
 Exterior Coating: None

Item	Qty	Size	Rating	Description/Service	Material
10	1	6	125	Flange - Spare	Steel
20	1	6	125	Flange - Level Transmitter	Steel
30	1	6	125	Flange - Conservation Vent	Steel
40	1	6	125	Flange - Spare	Steel
50	1	6	125	Flange - Spare	Steel
60	1	6	125	Nipple - Spare	Steel
70	1	16	125	Flange - Heater	Steel
80	1	6	125	Flange - Fill/Discharge	Steel



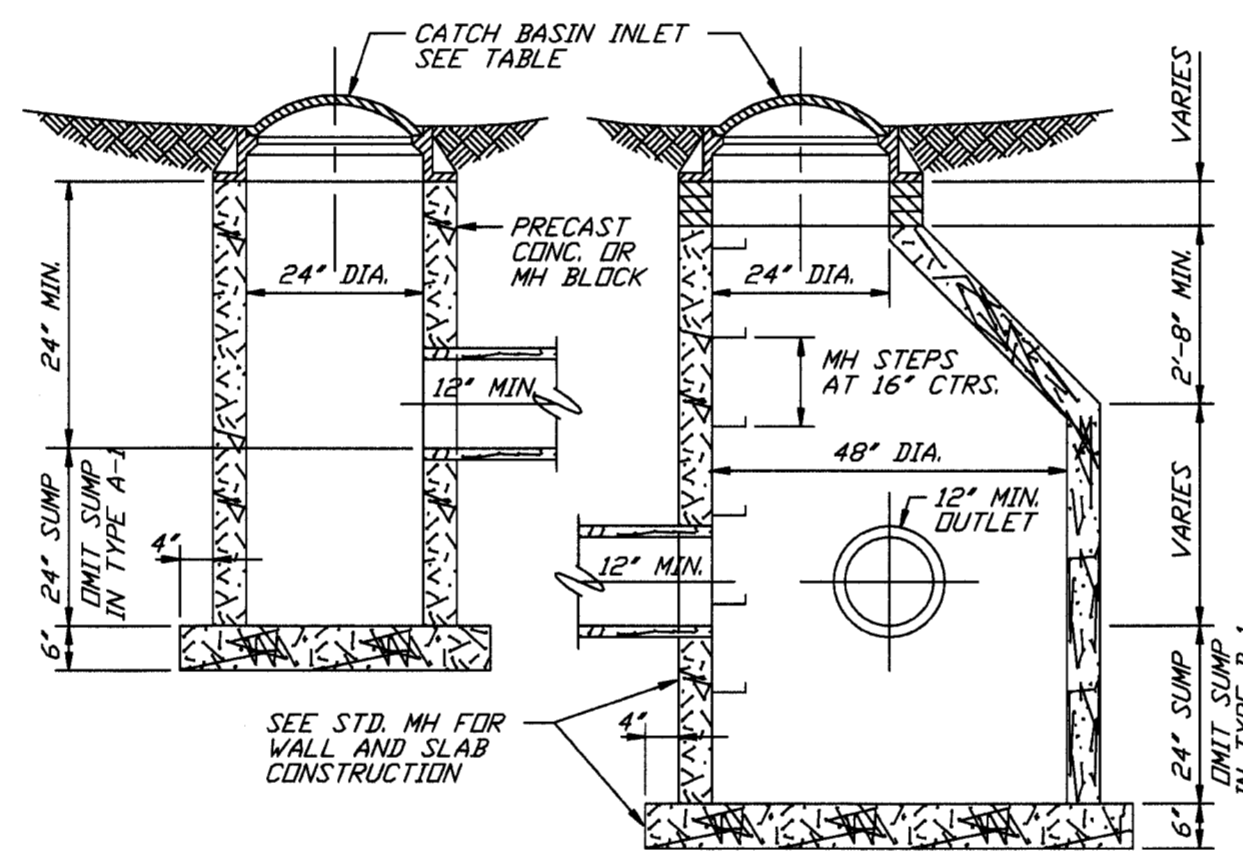
WASTE TREATMENT & STORAGE TANKS LOOKING WEST
SECTION C
 SCALE: 1/8" = 1'-0"



SILOS LOOKING WEST
SECTION B
 SCALE: 1/8" = 1'-0"



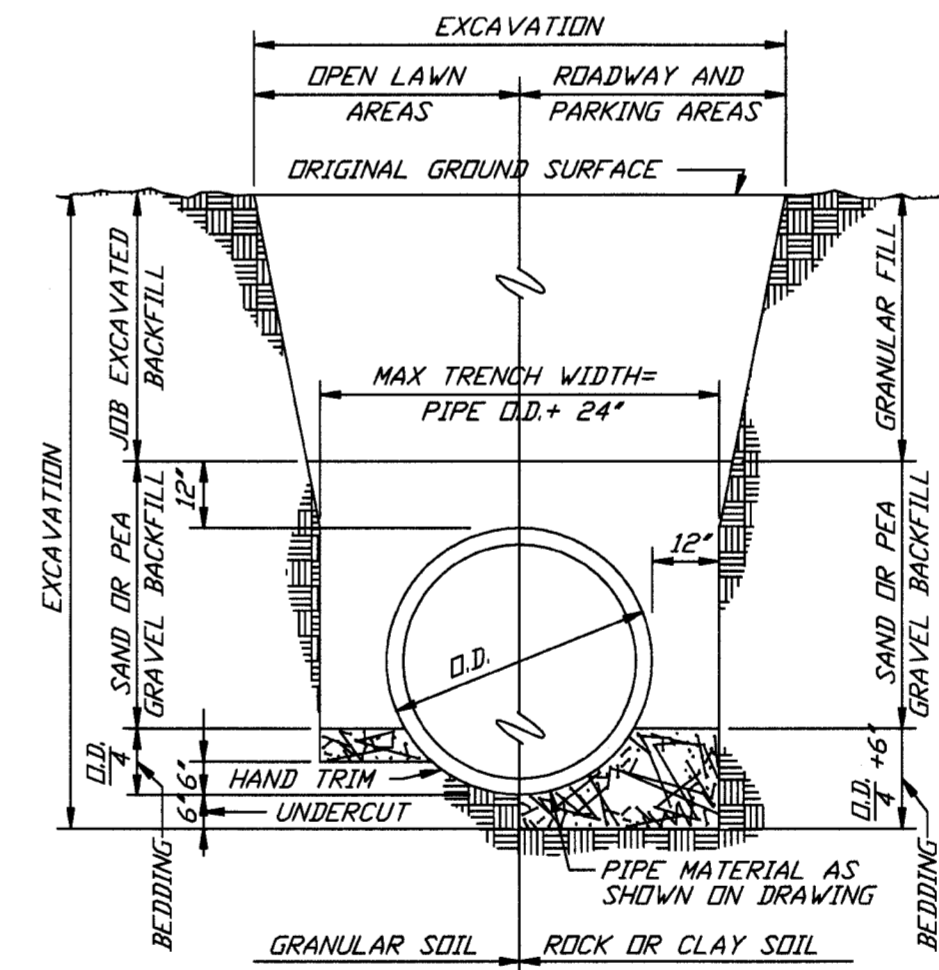
MANHOLE FRAME & COVER & CATCH BASIN INLETS				
TYPE		MANUFACTURER OR EQUAL		TYPE OF COVER OR INLET
		EAST JORDAN	NEENAH	
MH	ALL	1120	R-1764	SANITARY-SOLID SELF-SEALING STORM-VENTED
CB	TYPE A CURB	7000-TI-MI	R-3070	FLAT GRATE WITH VERT. OPEN BACK
CB	TYPE B CURB	7060	R-3034-B	FLAT GRATE WITH ROLL BACK
CB	PAVEMENT/ SHOULDER	1020-MI	R-2060-D	FLAT GRATE
CB	OPEN AREA	1020-OI	R-2360-D	BEEHIVE GRATE 4" HIGH
CB	GUTTER	5100	R-3238	CONCAVE INLET



TYPE "A"
 NOTE: TYPE A-1 EQUAL TO TYPE "A" EXCLUDING 24" SUMP BUT ADD IN BOTTOM CONC. FILLET.

TYPE "B"
 NOTE: TYPE B-1 EQUAL TO TYPE "B" EXCLUDING 24" SUMP BUT ADD IN BOTTOM CONC. FILLET.

CATCH BASINS



TRENCH EXCAVATION AND BACKFILL
 NO SCALE

REVISIONS				
NO.	DATE	DESCRIPTION	BY	CHKD.
A	4/27/04	License Update		
B				
C				
D				
E				

FILENAME: _____
 PROJ. FILE: Lic
 DATE: 3/26/04
 SCALE: 1"=1'-0"
 SHEET: 01 OF 01
 DRN: 34-CRG

MICHIGAN DISPOSAL WASTE TREATMENT PLANT
 STORM WATER SCHEDULES & DETAILS