



Michigan Department of Environment, Great Lakes, and Energy
Materials Management Division

SOLID WASTE DISPOSAL AREA OPERATING LICENSE

Effective April 22, 2019, the Michigan Department of Environmental Quality, by Executive Order Number 2019-06, became the Michigan Department of Environment, Great Lakes, and Energy (EGLE). Effective April 22, 2019, the Waste Management and Radiological Protection Division became the Materials Management Division (MMD).

This license is issued under the provisions of Part 115, Solid Waste Management, of the Natural Resources and Environmental Protection Act, 1994 PA 451, as amended, MCL 324.11501 et seq., and authorizes the operation of this solid waste disposal area (Facility) in the state of Michigan. This license does not obviate the need to obtain other authorizations as may be required by state law.

FACILITY NAME: Autumn Hills Recycling & Disposal Facility

LICENSEE/OPERATOR: Waste Management of Michigan, Inc.

FACILITY OWNER: Waste Management of Michigan, Inc.

PROPERTY OWNER: Waste Management of Michigan, Inc.

FACILITY TYPE(S): Municipal Solid Waste Landfill and Solid Waste Processing Plant

FACILITY ID NUMBER: 409032

COUNTY: Ottawa

LICENSE NUMBER: 9664

ISSUE DATE: December 14, 2021

EXPIRATION DATE: December 14, 2026

FACILITY DESCRIPTION: The Autumn Hills Recycling & Disposal Facility, a municipal solid waste landfill and solid waste processing plant, consists of 379.14 acres located in the W 1/2 of Section 36, T5N, R14W, Zeeland Township, Ottawa County, Michigan, as identified in Attachment A and fully described in this license.

AREA AUTHORIZED FOR DISPOSAL OF SOLID WASTE: Identified in item number 2.

RESPONSIBLE PARTY: Mr. Matt Rosser, District Manager
Waste Management of Michigan, Inc.
700 56th Avenue
Zeeland, Michigan 49464
616-836-8493

RENEWAL OPERATING LICENSE: This License Number 9664 supersedes and replaces Solid Waste Disposal Area Operating License Number 9515 issued to Waste Management of Michigan, Inc. on March 7, 2018.

This license is subject to revocation by the Director of the Michigan Department of Environment, Great Lakes, and Energy, if the Director finds that this Facility is not being constructed or operated in accordance with the approved plans, the conditions of a permit or license, Part 115, or the rules promulgated under Part 115. Failure to comply with the terms and provisions of this license may result in legal action leading to civil and/or criminal penalties pursuant to Part 115. This license shall be available through the licensee during its term and remains the property of the Director.

THIS LICENSE IS NOT TRANSFERABLE.

Rhonda S. Oyer, Manager, Solid Waste Section
Materials Management Division

Licensee: Waste Management of Michigan, Inc.
Facility Name: Autumn Hills Recycling & Disposal Facility
Operating License Number: 9664
Issue Date: December 14, 2021

The licensee shall comply with all terms of this license and the provisions of Part 115 and the administrative rules implementing Part 115 (Part 115 Rules). This license includes the license application and any attachments to this license.

1. The licensee shall operate the Facility in a manner that will prevent violations of any state or federal law.
2. The following portions of the Facility are authorized to receive solid waste by this license:
 - a. **ACTIVE PORTIONS NOT AT FINAL GRADE:** The area(s) identified as Cells 1, 2, 5, 6, 9, 10, 11, 12, 13, 14, and 15 were authorized to receive waste by the previous license. This area's total acreage is 81.3 acres.
 - b. **OTHER DISPOSAL AREAS:** The Solidification Processing Facility.
3. The following portions of the Facility **WILL BE** authorized to receive solid waste by this license following approval by EGLE of construction certification:

UNCONSTRUCTED AREA(S) WITH FINANCIAL ASSURANCE: The area(s) identified as Cell 16, totaling 8.3 acres, are included in the calculation of financial assurance as required by Section 11523 of Part 115. This portion(s) of the Facility shall be authorized to receive waste, as part of this license, when acceptable certification is submitted to EGLE, as required by Section 11516(5) of Part 115, and determined by EGLE to be consistent with Part 115 and the Part 115 Rules. The certification shall verify that construction of this area(s) was in accordance with the Construction Permit(s) listed in Item 8 of this license, Part 115, and the Part 115 Rules.
4. The following portions of the Facility are **NOT** authorized to receive solid waste by this license:

UNCONSTRUCTED AREA(S) WITHOUT FINANCIAL ASSURANCE: The area(s) identified as Cells 17, 18, 19, 20, 21, and 22 are not constructed and are not included in the calculation of financial assurance as required by Section 11523 of Part 115. This area's total acreage is 62.6 acres.
5. The attached map (Attachment A) shows the Facility, the area permitted for construction, monitoring points, leachate storage units, site roads, other disposal areas, and related appurtenances.
6. Issuance of this license is conditioned on the accuracy of the information submitted by the Applicant in the Application for License to Operate a Solid Waste Disposal Area (Application) received by EGLE on September 8, 2021, and any subsequent amendments. Any material or intentional inaccuracies found in that information is grounds for the revocation or modification of this license and may be grounds for enforcement action. The licensee shall inform EGLE's MMD Grand Rapids District Supervisor, of any inaccuracies in the information in the Application upon discovery.
7. This license is issued based on EGLE's review of the Application, submitted by Waste Management of Michigan, Inc., for the Autumn Hills Recycling & Disposal Facility, dated September 2, 2021, and revised November 4, 2021, November 19, 2021, and November 30, 2021. The Application consists of the following:
 - a. Application Form EQP 5507.
 - b. Application fee in the amount of \$3,000.00.
 - c. Certification of construction by: N/A.
 - d. Waste Characterization: N/A.
 - e. Restrictive Covenant:

The November 28, 2012, restrictive covenant on 156.18 acres is on file at the Ottawa County Register of Deeds recorded on January 31, 2013, as Liber 2013-0005372. A copy is on file with EGLE.

Licensee: Waste Management of Michigan, Inc.
Facility Name: Autumn Hills Recycling & Disposal Facility
Operating License Number: 9664
Issue Date: December 14, 2021

f. Perpetual Care Fund Agreement, established as a standby trust account, signed by Ms. Diana Seng, Authorized Representative, on January 13, 2015, was executed by EGLE on January 22, 2015.

g. Financial Assurance.

i. Financial Assurance Required:

The amount of financial assurance required for this Facility was calculated based on the calculation worksheet form EQP 5507A entitled, "Form A, Financial Assurance Required," and is \$15,250,243.00.

The Facility has provided financial assurance totaling \$15,250,243.00, based on the requirements of Section 11523 of Part 115, consisting of a combination of the Perpetual Care Fund established under Section 11525 of Part 115, bonds, and the financial capability of the Applicant as evidenced by a financial test. The financial assurance mechanisms used by the Facility are summarized below in Items ii, iii, and iv, respectively.

ii. Financial Assurance Provided Via a Perpetual Care Fund:

The Perpetual Care Fund Agreement statement showed a balance of \$2,510,000.00 in the Facility's Perpetual Care Fund as of September 3, 2021. Of this amount, EGLE has granted the request to use \$2,510,000.00 toward the total amount of financial assurance required.

iii. Financial Assurance Provided Via Bond:

The following financial assurance has been received from the Applicant to meet the amount of financial assurance required:

Surety Bond	\$12,740,243.00
Total Amount Received:	\$12,740,243.00

iv. Financial Assurance Provided Via a Financial Test for a Type II Landfill: N/A.

v. Financial Assurance Updates Required:

For Type II landfills, the financial assurance cost estimates of closure and postclosure activities must be updated annually and the corresponding requisite amount of financial assurance must be adjusted annually for the costs of inflation. The corresponding financial assurance, as adjusted for inflation and other factors, is due one year from the date of this license, and each year thereafter.

vi. Other Required Financial Assurance: N/A.

8. The following documents approved with Construction Permit Number(s) 4140 issued to the Autumn Hills Recycling and Disposal Facility on January 29, 2014, are incorporated in this license by reference:

- a. 2013 Construction Permit Application Volumes 1 through 4.
- b. Engineering Plan Sheets 0-26, titled "Construction Permit Application, 2013 Expansion Permit Application, Autumn Hills RDF.

9. The following additional documents, approved since the issuance of the construction permit(s) referenced in Item 8, are incorporated in this license by reference:

- a. Revised Design Plans for Cell 16 including a Compacted Clay Liner and Alternate Drainage Material.
- b. Revised Construction Quality Assurance Plan 2021.

10. Consent Order/Judgment Number: N/A.
11. The licensee shall repair any portion of the certified liner or leachate collection system that is found to be deficient or damaged during the term of this license unless determined otherwise by EGLE.
12. The licensee shall have repairs to any portion of the certified liner or leachate collection system recertified by a registered professional engineer in accordance with R 299.4921 of the Part 115 Rules and approved by EGLE before receiving waste in that portion of the certified liner or leachate collection system. The licensee shall submit the recertification to EGLE's MMD Grand Rapids District Supervisor, for review and approval.
13. The licensee shall conduct hydrogeological monitoring in accordance with the approved hydrogeological monitoring plan, dated August 2013. The sampling analytical results shall be submitted to EGLE's MMD Grand Rapids District office.
14. Modifications to the approved hydrogeological monitoring plan referenced in Item 13 may be approved, in writing, by EGLE's MMD Grand Rapids District Supervisor. Proposed revisions must be submitted in a format specified by EGLE.
15. Leachate may be recirculated if a leachate recirculation plan has been approved, in writing, by EGLE's MMD Grand Rapids District Supervisor.
16. Modifications to approved engineering plans that constitute an upgrading, as defined in R 299.4106a(l) of the Part 115 Rules, may be approved, in writing, by EGLE's MMD Grand Rapids District Supervisor.
17. Requests for alternate daily cover may be approved, in writing, by EGLE's MMD Grand Rapids District Supervisor.
18. Leakage Control Criteria:

The active portions of the unit(s) authorized to receive waste by this license is a monitorable unit(s) which is located over a natural soil barrier and that is in compliance with the provisions of R 299.4422(2) of the Part 115 Rules.

19. **VARIANCES:** The licensee is granted the following variance(s) from Part 115 and/or the Part 115 Rules: None.

20. **SPECIAL CONDITIONS:**

- a. The licensee shall place a compacted layer of not less than six inches of earthen material, unless an exemption is granted, of suitable cover material on all exposed solid waste by the end of each working day, as required by R 299.4429(1) of the Part 115 Rules. Suitable cover shall be either uncontaminated soil or an alternate cover approved by the MMD, listed in Item i, below. Alternate cover shall be restricted as indicated in Item ii and applied as per the approved operational plan submitted by the licensee.

- i. Approved alternate cover shall be any of the following:

<u>Product/Waste Material</u>	<u>Source</u>	<u>Monthly Volume</u>
(1) Fabrisoil	Various Outside Vendors	Varies
(2) Foundry Sand	Holland Pattern	Varies
(3) Water Filtration Sludge	City of Grand Rapids	Varies
(4) Foundry Sand	Steeltech LTD	Varies
(5) Foundry Sand	West Michigan Wheel, Inc.	Varies
(6) Particle Board	Haworth, Inc.	Varies

Licensee: Waste Management of Michigan, Inc.
Facility Name: Autumn Hills Recycling & Disposal Facility
Operating License Number: 9664
Issue Date: December 14, 2021

(7) Compost Screening Overs	Spurt Industries	Varies
(8) Commercially Available Tarps	Various Vendors	N/A
(9) Engineered Wood Chips	Chef Container	1,250 yds.
(10) Glass and Mirror Material	Gentex	Varies

ii. The above materials are approved for daily cover when used in the following manner:

- (1) The licensee shall use the material as daily cover only. The material cannot be used for road building or fill in other areas of the Facility's operation.
- (2) The licensee shall maintain copies of the testing performed on Class B and Class C materials in the facility operating record.
- (3) The licensee shall only stockpile material in a secure manner within the active cell.
- (4) This approval does not preclude the licensee from disposing of the material as waste in the active fill area instead of using the material as daily cover.
- (5) This approval shall immediately become void upon documentation by EGLE that the alternative cover is not being used in accordance with listed conditions, that the alternative cover is not providing the necessary protection, that the material no longer meets the alternative daily cover guidelines, or that the process producing the waste material has changed.
- (6) If the material does not meet the guidelines from Attachment 2 of Policy and Procedure OWMRP-115-10, for nonvolatiles, the licensee shall ensure that fugitive dust emissions from this material do not occur. Acceptable methods to ensure fugitive emissions do not occur are:
 - (a) Implement a schedule to wet down material; or
 - (b) Cover the material with a tarp; or
 - (c) Apply an approved foam or other appropriate commercial dust control product.
- (7) This approval to use alternative cover shall expire upon expiration of this operating license.

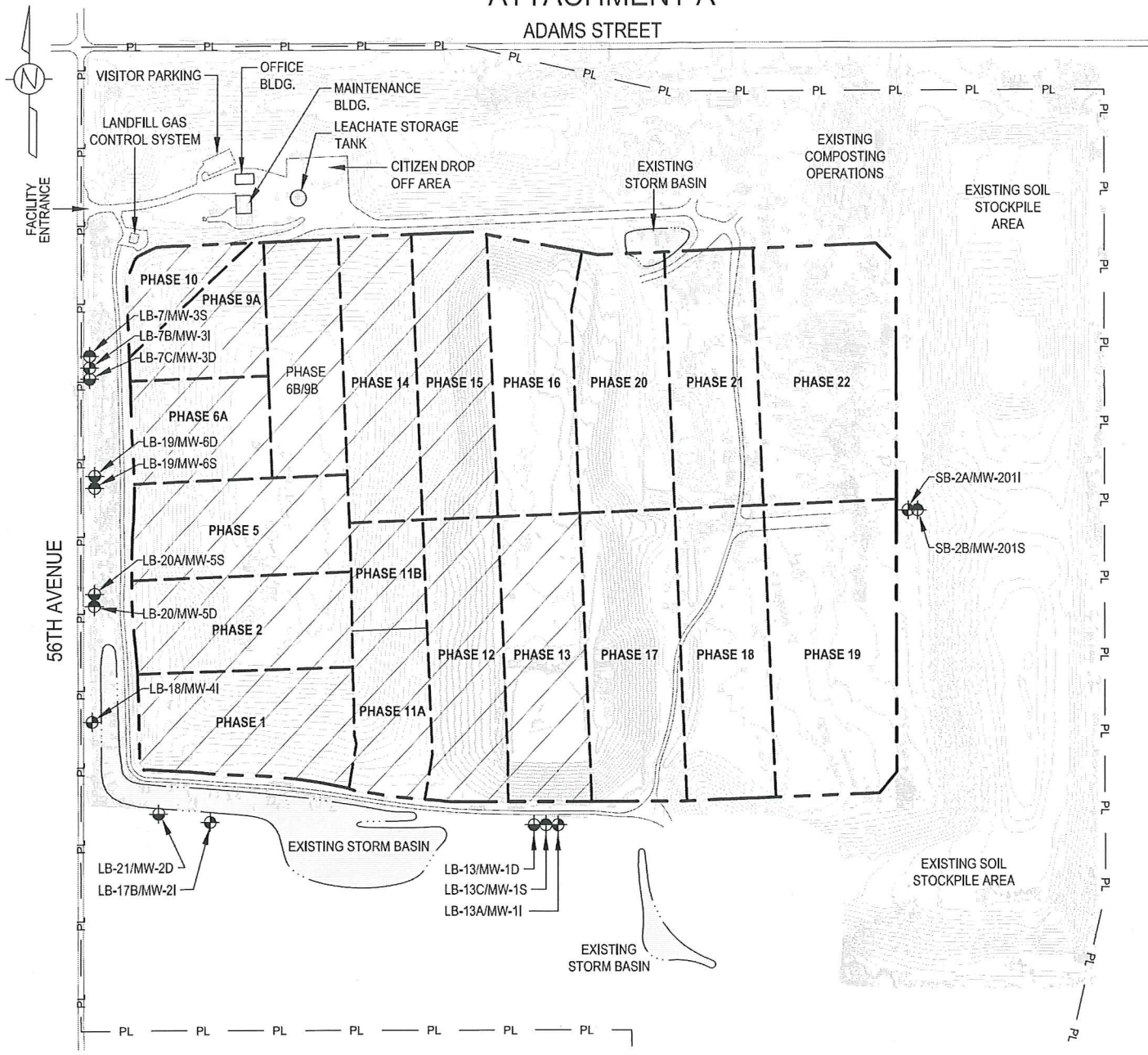
b. Solid Waste Disposal Area Construction Permit No. 4140 authorized an alternative cap design which utilizes additional engineered soils in lieu of a flexible membrane liner. Autumn Hills will provide an extra \$15,000 per acre as a supplemental cost for calculating required financial assurance for closure. For financial assurance calculations, this value will be entered on Line 11 of Form B (Closure Cost Estimate) and adjusted for inflation with each financial assurance update.

21. **TERM:** This license shall remain in effect until its expiration date, unless revoked or continued in effect, as provided by, the Administrative Procedures Act, 1969 PA 306, as amended, or unless superseded by the issuance of a subsequent license.

END OF LICENSE

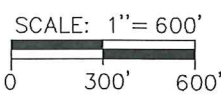
ATTACHMENT A

ADAMS STREET



LEGEND

- PL — PROPERTY BOUNDARY
- — — — — SOILD WASTE BOUNDARY
- - - - - CELL BOUNDARY
- ▨ LICENSED, ACTIVE DISPOSAL AREA
- ⊕ MW-XXXX SHALLOW MONITORING WELL
- ⊕ MW-XXXI INTERMEDIATE MONITORING WELL
- ⊕ MW-XXXD DEEP MONITORING WELL



NOTES

1. AERIAL TOPOGRAPHIC SURVEY WAS PREPARED BY HOLLAND ENGINEERING, INC. DATED 03-25-2016.
3. CONTOURS REPRESENT 5 FOOT INTERVALS.
2. SOIL BORING LOCATIONS ARE APPROXIMATE BASED ON HISTORICAL SURVEY DATA.

	<h2 style="margin: 0;">AUTUMN HILLS RECYCLING AND DISPOSAL FACILITY</h2> <h1 style="margin: 0;">SITE PLAN</h1>	DRAWN BY - HEI (AJN) DATE: 01-31-2017 JOB NO. 05-02-003 SCALE: 1" = 600' SHEET 1 OF 1
--	--	---