



MICHIGAN DEPARTMENT OF ENVIRONMENT, GREAT LAKES, AND ENERGY

MATERIALS MANAGEMENT DIVISION

SOLID WASTE DISPOSAL AREA LICENSE

This license is issued under the provisions of Part 115, Solid Waste Management, of the Natural Resources and Environmental Protection Act, 1994 PA 451, as amended, MCL 324.11501 et seq., and authorizes the operation of this solid waste disposal area (Facility) in the state of Michigan. This license does not obviate the need to obtain other authorizations as may be required by state law.

FACILITY NAME: Hiawatha Shores Landfill

LICENSEE/OPERATOR: Hiawatha Shores Landfill, Inc.

FACILITY OWNER: Hiawatha Shores Landfill, Inc.

PROPERTY OWNER: Hiawatha Shores Landfill, Inc.

FACILITY TYPE(S): Municipal Solid Waste Landfill

FACILITY ID NUMBER: 485207

COUNTY: Schoolcraft

LICENSE NUMBER: 9719

ISSUE DATE: December 15, 2023

EXPIRATION DATE: December 15, 2028

FACILITY DESCRIPTION: The Hiawatha Shores Landfill, a Municipal Solid Waste Landfill, consists of 44.5 acres located in the SW 1/4 of the NE 1/4 of Section 4, SE 1/4 of the NE 1/4 of Section 4 and the NW 1/4 of the SE 1/4 of Section 4, T42N, R14W, Doyle Township, Schoolcraft County, Michigan, as identified in Attachment A and fully described in this license.

AREA AUTHORIZED FOR DISPOSAL OF SOLID WASTE: See Attachment A, and items 2 and 3 of this license.

RESPONSIBLE PARTY: Stanley Zellar, Sr
Hiawatha Shores Landfill, Inc.
3098N County Road 436
Gulliver, Michigan 49840
(906) 341-2001

RENEWAL OPERATING LICENSE: This License Number 9719 supersedes and replaces Solid Waste Disposal Area Operating License Number 9534 issued to Hiawatha Shores Landfill, Inc. on October 12, 2018.

This license is subject to revocation by the Director of the Michigan Department of Environment, Great Lakes, and Energy, if the Director finds that this Facility is not being constructed or operated in accordance with the approved plans, the conditions of a permit or license, Part 115, or the rules promulgated under Part 115. Failure to comply with the terms and provisions of this license may result in legal action leading to civil and/or criminal penalties pursuant to Part 115. This license shall be available through the licensee during its term and remains the property of the Director.

THIS LICENSE IS NOT TRANSFERABLE.

 for

Rhonda S. Oyer, Manager, Solid Waste Section
Materials Management Division

Licensee: Hiawatha Shores Landfill, Inc.
Facility Name: Hiawatha Shores Landfill
Operating License Number: 9719
Issue Date: December 15, 2023

The licensee shall comply with all terms of this license and the provisions of Part 115 and the administrative rules implementing Part 115 (Part 115 Rules). This license includes the license application and any attachments to this license.

1. The licensee shall operate the Facility in a manner that will prevent violations of any state or federal law.

2. The following portions of the Facility are authorized to receive solid waste by this license:

ACTIVE PORTIONS NOT AT FINAL GRADE: The area(s) identified as Phase 1 Cell and Phase 2 Cell were authorized to receive waste by the previous license. This area's total acreage is 8.70 acres.

3. The following portions of the Facility **WILL BE** authorized to receive solid waste by this license following approval by EGLE of construction certification:

UNCONSTRUCTED AREA(S) WITH FINANCIAL ASSURANCE: The area(s) identified as Phase 3 Cell, totaling 4.90 acres, are included in the calculation of financial assurance as required by Section 11523 of Part 115. This portion(s) of the Facility shall be authorized to receive waste, as part of this license, when acceptable certification is submitted to EGLE, as required by Section 11516(3) of Part 115, and determined by EGLE to be consistent with Part 115 and the Part 115 Rules. The certification shall verify that construction of this area(s) was in accordance with the Construction Permit(s) listed in Item 8 of this license, Part 115, and the Part 115 Rules.

4. The following portions of the Facility are **NOT** authorized to receive solid waste by this license:

UNCONSTRUCTED AREA(S) WITHOUT FINANCIAL ASSURANCE: The area(s) identified as Phases 4, 5, and 6 are not constructed and are not included in the calculation of financial assurance as required by Section 11523 of Part 115. This area's total acreage is 12.80 acres.

5. The attached map (Attachment A) shows the Facility, the area permitted for construction, monitoring points, leachate storage units, site roads, other disposal areas, and related appurtenances.

6. Issuance of this license is conditioned on the accuracy of the information submitted by the Applicant in the Application for License to Operate a Solid Waste Disposal Area (Application) received by EGLE on August 25, 2023, and any subsequent amendments. Any material or intentional inaccuracies found in that information is grounds for the revocation or modification of this license and may be grounds for enforcement action. The licensee shall inform EGLE's MMD Marquette District Supervisor, of any inaccuracies in the information in the Application upon discovery.

7. This license is issued based on EGLE's review of the Application, submitted by Hiawatha Shores Landfill, Inc., for the Hiawatha Shores Landfill, dated August 24, 2023, and revised September 13, 2023, and October 18, 2023. The Application consists of the following:

- a. Application Form EQP 5507.
- b. Application fee in the amount of \$500.00.
- c. Certification of construction by N/A, dated N/A.
- d. Waste Characterization: N/A.

Licensee: Hiawatha Shores Landfill, Inc.
Facility Name: Hiawatha Shores Landfill
Operating License Number: 9719
Issue Date: December 15, 2023

e. Restrictive Covenant:

The Hiawatha Shores Landfill restrictive covenant on 26.90 acres is on file at the Schoolcraft County Register of Deeds recorded on December 8, 2009, as Liber 185 pages 518-521. A copy is on file with EGLE.

f. Landfill Care Fund Agreement (LCF), established as a landfill care fund bond with a standby escrow account, signed by Stanley E. Zellar Sr., Owner, Hiawatha Shores Landfill, Inc., on November 16, 2023, was executed by EGLE on November 30, 2023.

g. Financial Assurance.

i. Financial Assurance Required:

The amount of financial assurance required for this Facility was calculated based on the calculation worksheet form EQP5507ACE entitled, "Form A, Financial Assurance Required," and is \$5,185,150.20.

The Facility has provided financial assurance totaling \$5,409,429.21, based on the requirements of Section 11523 of Part 115, consisting of a combination of the Perpetual Care Fund established under Section 11525 of Part 115, a Landfill Care Fund established under Section 11525d, and the financial capability of the Applicant as evidenced by a financial test. The financial assurance mechanisms used by the Facility are summarized below in Items ii, iii, and iv, respectively.

ii. Financial Assurance Provided Via Bond:

The following financial assurance has been received from the Applicant to meet the amount of financial assurance required:

Surety Bond	\$5,185,150.20
Trust Fund	\$224,279.01

Total Amount Received: \$5,409,429.21

iii. Financial Assurance Provided Via a Perpetual Care Fund: N/A.

iv. Financial Assurance Provided Via a Financial Test for a Type II Landfill: N/A.

v. Financial Assurance Updates Required:

For Type II landfills, the financial assurance cost estimates of closure and postclosure activities must be updated annually and the corresponding requisite amount of financial assurance must be adjusted annually for the costs of inflation. The corresponding financial assurance, as adjusted for inflation and other factors, is due one year from the date of this license, and each year thereafter.

vi. Other Required Financial Assurance: N/A.

8. The following documents approved with Construction Permit Number(s) 0394 issued to Hiawatha Shores Landfill, Inc. on October 10, 2001, are incorporated in this license by reference:

a. Hiawatha Shores Landfill, Inc., Environmental Assessment, prepared by Bittner Engineering, Inc., dated April 2001, revised on August 31, 2001, and approved by EGLE on October 10, 2001.

b. Hiawatha Shores landfill, Inc., Engineering Report, prepared by Bittner Engineering, Inc., dated April 2001, revised on August 31, 2001, and approved by EGLE on October 10, 2001.

Licensee: Hiawatha Shores Landfill, Inc.
Facility Name: Hiawatha Shores Landfill
Operating License Number: 9719
Issue Date: December 15, 2023

- c. Hiawatha Shores Landfill, Inc., Hydrogeological Report, prepared by Bittner Engineering, Inc. dated April 2001, revised on June 15, 2001, and approved by EGLE on August 2, 2001.
9. The following additional documents, approved since the issuance of the construction permit(s) referenced in Item 8, are incorporated in this license by reference:
 - a. Hiawatha Shores Landfill, Hydrogeological Monitoring Plan, prepared by Engineering and Environmental Solutions, LLC, updated August 2017, and approved by EGLE on August 9, 2017
 - b. Phase 2 Final Construction Documentation Report, prepared by Golder Associates Inc., prepared for the Hiawatha Shores Landfill, dated August 2018, and approved by EGLE on October 12, 2018.
 - c. Hiawatha Shores Landfill Leachate Recirculation Plan, prepared by Hiawatha Shores Landfill, received by EGLE on August 25, 2022, and approved by EGLE on August 26, 2023.
 - d. Hiawatha Shores Landfill, Construction Quality Assurance Plan, prepared by WSP Golder, dated September 2022, and approved by EGLE on September 13, 2022.
 - e. Hiawatha Shores Landfill Phase 3 Construction Drawings, prepared by WSP Golder, prepared for the Hiawatha Shores Landfill, dated August 29, 2022, and approved by EGLE on August 30, 2023.
 - f. Landfill Gas Migration Monitoring Plan, prepared by WSP, prepared for the Hiawatha Shores Landfill, dated September 29, 2023, and approved by EGLE on October 6, 2023.
10. Consent Order/Judgment Number: N/A.
11. The licensee shall repair any portion of the certified liner or leachate collection system that is found to be deficient or damaged during the term of this license unless determined otherwise by EGLE.
12. The licensee shall have repairs to any portion of the certified liner or leachate collection system recertified by a registered professional engineer in accordance with R 299.4921 of the Part 115 Rules and approved by EGLE before receiving waste in that portion of the certified liner or leachate collection system. The licensee shall submit the recertification to EGLE's MMD Marquette District Supervisor, for review and approval.
13. The licensee shall conduct hydrogeological monitoring in accordance with the approved hydrogeological monitoring plan, dated August 2017 and approved by EGLE on August 9, 2017. The sampling analytical results shall be submitted to EGLE's MMD Marquette District Office.
14. Modifications to the approved hydrogeological monitoring plan referenced in Item 13 may be approved, in writing, by EGLE's MMD Marquette Supervisor. Proposed revisions must be submitted in a format specified by EGLE.
15. Leachate may be recirculated if a leachate recirculation plan has been approved, in writing, by EGLE's MMD Marquette District Supervisor.
16. Modifications to approved engineering plans that constitute an upgrading, as defined in R 299.4106a(l) of the Part 115 Rules, may be approved, in writing, by EGLE's MMD Marquette District Supervisor.
17. Requests for alternate daily cover may be approved, in writing, by EGLE's MMD Marquette District Supervisor.
18. Leakage Control Criteria:

Licensee: Hiawatha Shores Landfill, Inc.
Facility Name: Hiawatha Shores Landfill
Operating License Number: 9719
Issue Date: December 15, 2023

The active portions of the unit(s) authorized to receive waste by this license is a monitorable unit(s) designed with a double-liner system that is in compliance with the provisions of R 299.4422(3) of the Part 115 Rules and that is capable of detecting and collecting leakage through the primary composite liner. The action flow rate for each unit containing a secondary collection system is 25 gallons/acre/day.

19. **VARIANCES:** The licensee is granted the following variance(s) from Part 115 and/or the Part 115 Rules: None.

20. **SPECIAL CONDITIONS:** N/A.

21. **TERM:** This license shall remain in effect until its expiration date, unless revoked or continued in effect, as provided by, the Administrative Procedures Act, 1969 PA 306, as amended, or unless superseded by the issuance of a subsequent license.

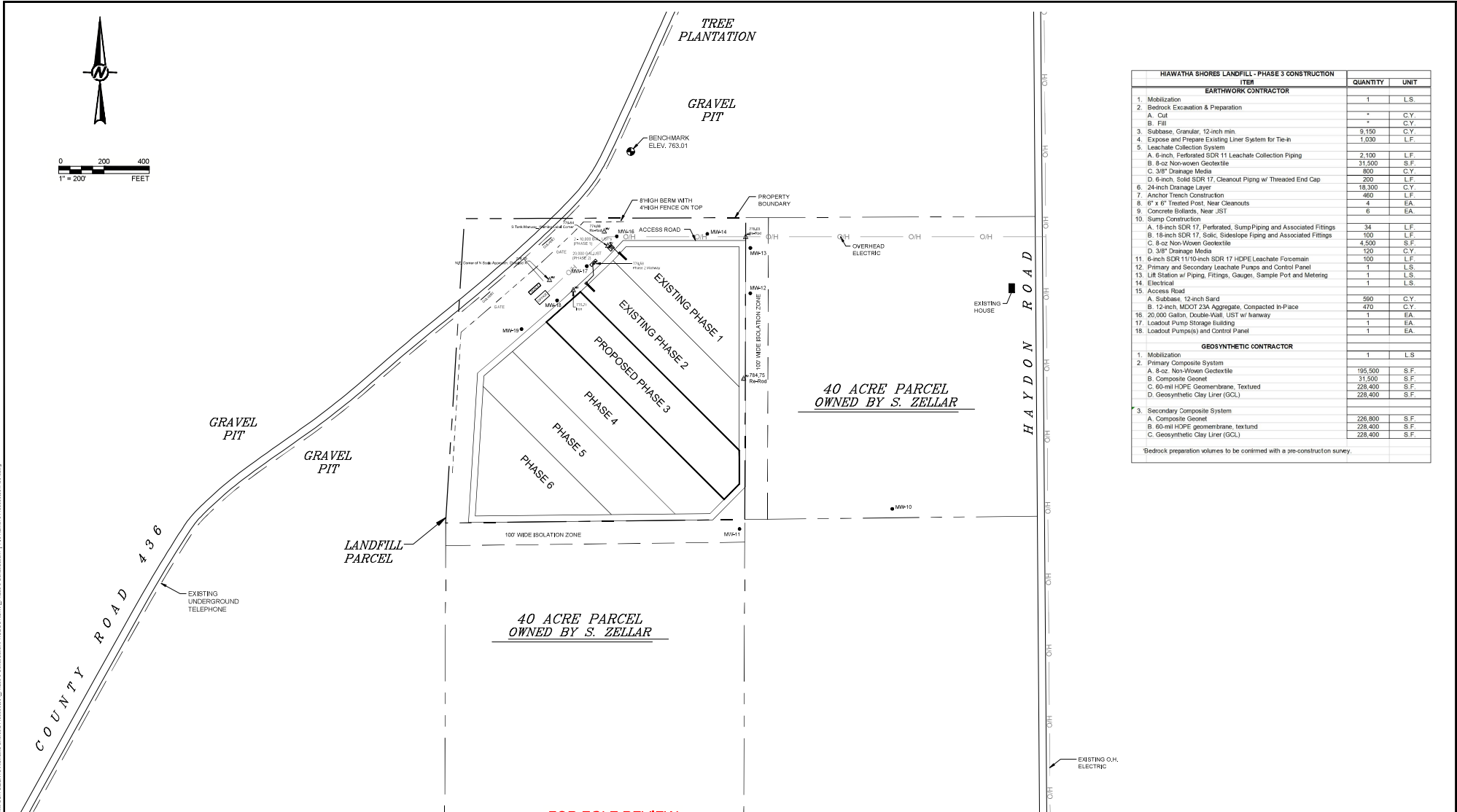
END OF LICENSE

If you need this information in an alternate format, contact EGLE-Accessibility@Michigan.gov or call 800-662-9278.

EGLE does not discriminate on the basis of race, sex, religion, age, national origin, color, marital status, disability, political beliefs, height, weight, genetic information, or sexual orientation in the administration of any of its programs or activities, and prohibits intimidation and retaliation, as required by applicable laws and regulations. Questions or concerns should be directed to the Nondiscrimination Compliance Coordinator at EGLE-NondiscriminationCC@Michigan.gov or 517 249-0906.

This form and its contents are subject to the Freedom of Information Act and may be released to the public.

Attachment A



FOR EGLE REVIEW

HIAWATHA SHORES LANDFILL - PHASE 3 CONSTRUCTION		
ITEM	QUANTITY	UNIT
EARTHWORK CONTRACTOR		
1. Mobilization	1	L.S.
2. Bedrock Excavation & Preparation		
A. Cut	-	C.Y.
B. Fill	-	C.Y.
3. Subbase, Granular, 12-inch min.	9,150	C.Y.
4. Expose and Prepare Existing Liner System for Tie-in	1,030	L.F.
5. Leachate Collection System		
A. 6-inch, Perforated SDR 11 Leachate Collection Piping	2,100	L.F.
B. 8-oz Non-woven Geotextile	31,500	S.F.
C. 3/8" Drainage Media	800	C.Y.
D. 6-inch, Solid SDR 17, Cleanout Piping w/ Threaded End Cap	200	L.F.
6. 24-inch Drainage Layer	18,300	C.Y.
7. Anchor Trench Construction	460	L.F.
8. 6" x 6" Treated Post, Near Cleanouts	4	EA.
9. Concrete Bolts, Near JST	6	EA.
10. Sump Construction		
A. 18-inch SDR 17, Perforated, Sump Piping and Associated Fittings	34	L.F.
B. 18-inch SDR 17, Solid, Sideslope Piping and Associated Fittings	100	L.F.
C. 8-oz Non-Woven Geotextile	4,500	S.F.
D. 3/8" Drainage Media	120	C.Y.
11. 6-inch SDR 11/10-inch SDR 17 HDPE Leachate Foremain	100	L.F.
12. Primary and Secondary Leachate Pumps and Control Panel	1	L.S.
13. Lift Station w/ Piping, Fittings, Gauges, Sample Port and Metering	1	L.S.
14. Electrical	1	L.S.
15. Access Road		
A. Subbase, 12-inch Sand	580	C.Y.
B. 12-inch, MDT 23A Aggregate, Compacted In-Place	470	C.Y.
C. 20,000 Gallon, Double-Wall, UST w/ Manway	1	EA.
D. Loadout Pump Storage Building	1	EA.
E. Loadout Pump(s) and Control Panel	1	EA.
GEOSYNTHETIC CONTRACTOR		
1. Mobilization	1	L.S.
2. Primary Composite System		
A. 8-oz, Non-Woven Geotextile	195,500	S.F.
B. Composite Geonet	31,500	S.F.
C. 60-mil HDPE Geomembrane, Textured	228,400	S.F.
D. Geosynthetic Clay Liner (GCL)	228,400	S.F.
3. Secondary Composite System		
A. Composite Geonet	228,800	S.F.
B. 60-mil HDPE geomembrane, textured	228,400	S.F.
C. Geosynthetic Clay Liner (GCL)	228,400	S.F.
Bedrock preparation volumes to be confirmed with a pre-construction survey.		

CLIENT	HIAWATHA SHORES LANDFILL GULLIVER, MICHIGAN	PROJECT	PHASE 3 CONSTRUCTION
CONSULTANT	WSP GOLDER	TITLE	EXISTING CONDITIONS SITE PLAN
DESIGNED	DJS/SSF	PROJECT NO.	31405536.001
PREPARED	DJS/SSF	CONTROL	
REVIEWED	BAL	REV.	---
APPROVED	BAL	SHEET	1

0:00 1:00 2:00 3:00 4:00 5:00 6:00 7:00 8:00 9:00 10:00 11:00 12:00 13:00 14:00 15:00 16:00 17:00 18:00 19:00 20:00 21:00 22:00 23:00 24:00
 0 200 400
 1" = 200'
 FEET
 TREE PLANTATION
 GRAVEL PIT
 BENCHMARK
 ELEV. 763.01
 8" HIGH BERM WITH
 4" HIGH FENCE ON TOP
 PROPERTY
 BOUNDARY
 ACCESS ROAD
 MW-14
 MW-13
 OVERHEAD
 ELECTRIC
 EXISTING
 HOUSE
 HAYDON ROAD
 EXISTING O.H.
 ELECTRIC
 GRAVEL PIT
 GRAVEL PIT
 COUNTY ROAD 436
 EXISTING
 UNDERGROUND
 TELEPHONE
 LANDFILL
 PARCEL
 40 ACRE PARCEL
 OWNED BY S. ZELLAR
 100' WIDE ISOLATION ZONE
 MW-12
 MW-11
 784.75
 Red-dot
 MW-10
 MW-9
 MW-8
 MW-7
 MW-6
 MW-5
 MW-4
 MW-3
 MW-2
 MW-1
 100' WIDE ISOLATION ZONE
 40 ACRE PARCEL
 OWNED BY S. ZELLAR
 FOR EGLE REVIEW
 CLIENT
 HIAWATHA SHORES LANDFILL
 GULLIVER, MICHIGAN
 CONSULTANT
 WSP GOLDER
 DESIGNED
 DJS/SSF
 PREPARED
 DJS/SSF
 REVIEWED
 BAL
 APPROVED
 BAL
 PROJECT
 PHASE 3 CONSTRUCTION
 TITLE
 EXISTING CONDITIONS SITE PLAN
 PROJECT NO.
 31405536.001
 CONTROL
 REV.

 SHEET
 1