



MICHIGAN DEPARTMENT OF ENVIRONMENT, GREAT LAKES, AND ENERGY

MATERIALS MANAGEMENT DIVISION

SOLID WASTE DISPOSAL AREA LICENSE

This license is issued under the provisions of Part 115, Solid Waste Management, of the Natural Resources and Environmental Protection Act, 1994 PA 451, as amended, MCL 324.11501 et seq., and authorizes the operation of this solid waste disposal area (Facility) in the state of Michigan. This license does not obviate the need to obtain other authorizations as may be required by state law.

FACILITY NAME: Montmorency-Oscoda-Alpena Landfill

LICENSEE/OPERATOR: Montmorency-Oscoda-Alpena Solid Waste Authority

FACILITY OWNER: Montmorency-Oscoda-Alpena Solid Waste Authority

PROPERTY OWNER: Montmorency-Oscoda-Alpena Solid Waste Authority

FACILITY TYPE(S): Municipal Solid Waste Landfill

FACILITY ID NUMBER: 450267

COUNTY: Montmorency

LICENSE NUMBER: 9738

ISSUE DATE: June 26, 2024

EXPIRATION DATE: June 26, 2029

FACILITY DESCRIPTION: The Montmorency-Oscoda-Alpena Landfill, a municipal solid waste landfill, consists of 86.06 acres located at 6571 Landfill Road, Loud Township, Montmorency County, Michigan, as identified in Attachment A and fully described in this license.

AREA AUTHORIZED FOR DISPOSAL OF SOLID WASTE: See Attachment A, and items 2 and 3 of this license.

RESPONSIBLE PARTY: Connie Gerrie, Administrator
Montmorency-Oscoda-Alpena Solid Waste Authority
6571 Landfill Road, P.O. Box 13
Atlanta, Michigan 49709
Phone Number 989-785-6500 Email: moalandfill@frontier.com

RENEWAL OPERATING LICENSE: This License Number 9738 supersedes and replaces Solid Waste Disposal Area Operating License Number 9550 issued to Montmorency-Oscoda-Alpena Solid Waste Authority on May 10, 2019.

This license is subject to revocation by the Director of the Michigan Department of Environment, Great Lakes, and Energy, if the Director finds that this Facility is not being constructed or operated in accordance with the approved plans, the conditions of a permit or license, Part 115, or the rules promulgated under Part 115. Failure to comply with the terms and provisions of this license may result in legal action leading to civil and/or criminal penalties pursuant to Part 115. This license shall be available through the licensee during its term and remains the property of the Director.

THIS LICENSE IS NOT TRANSFERABLE.

 for

Rhonda S. Oyer, Manager, Solid Waste Section
Materials Management Division

Licensee: Montmorency-Oscoda-Alpena Solid Waste Authority
Facility Name: Montmorency-Oscoda-Alpena Landfill
Operating License Number: 9738
Issue Date: June 26, 2024

The licensee shall comply with all terms of this license and the provisions of Part 115 and the administrative rules implementing Part 115 (Part 115 Rules). This license includes the license application and any attachments to this license.

1. The licensee shall operate the Facility in a manner that will prevent violations of any state or federal law.

2. The following portions of the Facility are authorized to receive solid waste by this license:

ACTIVE PORTIONS NOT AT FINAL GRADE: The area(s) identified as Cell 6; Cell A Phase I, II, and III; and Cell B Phase I, II, and III were authorized to receive waste by the previous license. This area's total acreage is 31.45 acres.

3. The following portions of the Facility **WILL BE** authorized to receive solid waste by this license following approval by EGLE of construction certification:

UNCONSTRUCTED AREA(S) WITH FINANCIAL ASSURANCE: The area(s) identified as Cell C Phase I, totaling 3.41 acres, are included in the calculation of financial assurance as required by Section 11523 of Part 115. This portion(s) of the Facility shall be authorized to receive waste, as part of this license, when acceptable certification is submitted to EGLE, as required by Section 11516(3) of Part 115, and determined by EGLE to be consistent with Part 115 and the Part 115 Rules. The certification shall verify that construction of this area(s) was in accordance with the Construction Permit(s) listed in Item 8 of this license, Part 115, and the Part 115 Rules.

4. The following portions of the Facility are **NOT** authorized to receive solid waste by this license:

a. **UNCONSTRUCTED AREA(S) WITHOUT FINANCIAL ASSURANCE:** The area(s) identified as Cell C Phase II and III are not constructed and are not included in the calculation of financial assurance as required by Section 11523 of Part 115. This area's total acreage is 6.06 acres.

b. **CLOSED UNIT(S) OR A PORTION OF A UNIT WHERE THE FINAL COVER HAS BEEN CERTIFIED CLOSED AND ACCEPTED BY EGLE:** The following unit(s) and/or portion(s) are closed:

i. **EXISTING UNIT(S):** The unit(s) or portion(s) of unit(s) identified as Cell 5 had final closure certified on Jul 30, 1992 and August 12, 1994. This certification was reviewed and approved by EGLE on later dates. This area's total acreage is 10 acres.

ii. **OTHER DISPOSAL AREAS:** Act 87 Units consisting of Trenches 1, 2, 3, and 4, had final closure certified on November 11, 1986, September 3, 1985, July 19, 1990, and July 1991, totaling 18.14 acres.

5. The attached map (Attachment A) shows the Facility, the area permitted for construction, monitoring points, leachate storage units, site roads, other disposal areas, and related appurtenances.

6. Issuance of this license is conditioned on the accuracy of the information submitted by the Applicant in the Application for License to Operate a Solid Waste Disposal Area (Application) received by EGLE on February 13, 2024, and any subsequent amendments. Any material or intentional inaccuracies found in that information is grounds for the revocation or modification of this license and may be grounds for enforcement action. The licensee shall inform EGLE's MMD Gaylord District Supervisor, of any inaccuracies in the information in the Application upon discovery.

7. This license is issued based on EGLE's review of the Application, submitted by Montmorency-Oscoda-Alpena Solid Waste Authority, for the Montmorency-Oscoda-Alpena Landfill, dated

February 9, 2024, and revised February 23, 2024, March 24, 2024, and June 20, 2024. The Application consists of the following:

- a. Application Form EQP 5507.
- b. Application fee in the amount of \$4,000.
- c. Certification of construction by N/A, dated N/A.
- d. Waste Characterization: N/A.
- e. Restrictive Covenant:

The Montmorency-Oscoda-Alpena Landfill restrictive covenant on 86.06 acres is on file at the Montmorency County Register of Deeds recorded on June 5, 2000, as Liber 00437 pages 0418-0422. A copy is on file with EGLE.

- f. Perpetual Care Fund Agreement (PCF), established as an escrow account, signed by Connie Gerrie, Administrator, Montmorency-Oscoda-Alpena Solid Waste Management Authority on February 22, 2022, was executed by EGLE on March 4, 2022.
- g. Financial Assurance.

- i. Financial Assurance Required:

The amount of financial assurance required for this Facility was calculated based on the calculation worksheet form EQP5507ACE entitled, "Form A, Financial Assurance Required," and is \$8,131,833.31.

The Facility has provided financial assurance totaling \$8,131,833.31, based on the requirements of Section 11523 of Part 115, consisting of a combination of the Perpetual Care Fund established under Section 11525 of Part 115, a Landfill Care Fund established under Section 11525d, and the financial capability of the Applicant as evidenced by a financial test. The financial assurance mechanisms used by the Facility are summarized below in Items ii, iii, and iv, respectively.

- ii. Financial Assurance Provided Via Bond:

The following financial assurance has been received from the Applicant to meet the amount of financial assurance required:

Cash Bond	\$362,800.00
Total Amount Received:	\$362,800.00

- iii. Financial Assurance Provided Via a Perpetual Care Fund:

The Perpetual Care Fund Agreement statement showed a balance of \$3,243,791.09 in the Facility's Perpetual Care Fund as of January 31, 2024. Of this amount, EGLE has granted the request to use \$3,243,791.09 toward the total amount of financial assurance required.

- iv. Financial Assurance Provided Via a Financial Test for a Type II Landfill:

A financial test may be used by the owner of a Type II landfill as a means to meet an amount up to, but not exceeding, 70 percent of the closure, post-closure, and corrective action cost estimate pursuant to Section 11523a of Part 115. This Facility has provided a financial test in the amount of \$4,525,242.22. Financial capability demonstrated by a financial test must be updated each fiscal year. The next update is due June 30, 2024 and each year thereafter. If the owner/operator fails to update the test, or is no longer able to

Licensee: Montmorency-Oscoda-Alpena Solid Waste Authority
Facility Name: Montmorency-Oscoda-Alpena Landfill
Operating License Number: 9738
Issue Date: June 26, 2024

satisfy the test, the owner/operator must obtain alternate financial assurance within 210 days following the close of the owner/operator's fiscal year.

v. Financial Assurance Updates Required:

For Type II landfills, the financial assurance cost estimates of closure and post-closure activities must be updated annually, and the corresponding requisite amount of financial assurance must be adjusted annually for the costs of inflation. The corresponding financial assurance, as adjusted for inflation and other factors, is due one year from the date of this license, and each year thereafter.

vi. Other Required Financial Assurance: N/A.

8. The following documents approved with Construction Permit Number(s) 0369 issued to the Montmorency-Oscoda-Alpena Solid Waste Management Authority on October 28, 1998, are incorporated in this license by reference:

Landfill Expansion Construction Permit Application dated June 1998, which includes the following documents:

- a. Engineering Plans entitled "Construction Permit Application, Montmorency-Oscoda-Alpena Solid Waste Management Authority, Type II Municipal Solid Waste Vertical Expansion of Cell 6 and Horizontal Expansion of new 40 Acre Section 6, T29N, R3E, Loud Township, Montmorency, Michigan", dated June 1998, prepared by Capitol Engineers.
- b. Environmental Assessment dated January 14, 1998.
- c. Hydrogeologic Investigation Report dated January 14, 1996.
- d. Final Cover Removal Plan - Cell 6, dated September 6, 1998.
- e. Closure Plan dated 1998.
- f. Post-Closure Plan dated 1998.

9. The following additional documents, approved since the issuance of the construction permit(s) referenced in Item 8, are incorporated in this license by reference:

- a. Cell A - Phase I Construction Certification, dated March 2000.
- b. Cell A - Phase II Construction Certification, dated August 2002.
- c. Cell A - Phase III Construction Certification, dated November 2004, prepared by Capitol Consultants, Inc.
- d. Cell B - Phase I Construction Certification, dated August 8, 2008.
- e. Cell B - Phase II Construction Certification, dated July 2009.
- f. Remedial Action Plan dated December 29, 1999, revisions dated March 15, 2006, July 12, 2012, and April 14, 2017.
- g. Lagoon Construction Phase I and II Engineering Plans, dated June 5, 2009, prepared by GZA GeoEnvironmental, Inc.
- h. Construction Permit Upgrade, dated August 21, 2012, prepared by Golder Associates, Inc.
- i. Leachate Recirculation Plan (Neptune Aerator), dated July 24, 2013, with revisions dated March 2, 2015.
- j. Interim Storm Water Management Plan dated October 7, 2016.
- k. Revised Hydrogeological Monitoring Plan dated April 14, 2017, revised March 2022.
- l. Construction Quality Assurance Plan dated May 3, 2018, prepared by Gosling Czubak Engineering Sciences, Inc.
- m. Cell B - Phase III Construction Certification, dated December 28, 2018, prepared by Gosling Czubak Engineering Sciences, Inc.
- n. Landfill Gas Migration Monitoring Plan, dated December 28, 2024, was approved on January 10, 2024.

10. Consent Order/Judgment Number: N/A.

11. The licensee shall repair any portion of the certified liner or leachate collection system that is found to be deficient or damaged during the term of this license unless determined otherwise by EGLE.

12. The licensee shall have repairs to any portion of the certified liner or leachate collection system recertified by a registered professional engineer in accordance with R 299.4921 of the Part 115 Rules and approved by EGLE before receiving waste in that portion of the certified liner or leachate collection system. The licensee shall submit the recertification to EGLE's MMD Gaylord District Supervisor, for review and approval.
13. The licensee shall conduct hydrogeological monitoring in accordance with the approved hydrogeological monitoring plan, dated March 22, 2022. The sampling analytical results shall be submitted to EGLE's MMD Gaylord District Office.
14. Modifications to the approved hydrogeological monitoring plan referenced in Item 13 may be approved, in writing, by EGLE's MMD Gaylord Supervisor. Proposed revisions must be submitted in a format specified by EGLE.
15. Leachate may be recirculated if a leachate recirculation plan has been approved, in writing, by EGLE's MMD Gaylord District Supervisor.
16. Modifications to approved engineering plans that constitute an upgrading, as defined in R 299.4106a(l) of the Part 115 Rules, may be approved, in writing, by EGLE's MMD Gaylord District Supervisor.
17. Requests for alternate daily cover may be approved, in writing, by EGLE's MMD Gaylord District Supervisor.
18. Leakage Control Criteria:

The active portions of the unit(s) authorized to receive waste by this license is an unmonitorable unit(s) designed with a double-liner systems that is in compliance with the provisions of R 299.4422(3) of the Part 115 Rules and that is capable of detecting and collecting leakage through the primary composite liner. The action flow rate for each unit containing a leak detection system is 50 gallons/acre/day. The response flow rate for each unit containing a leak detection system is 200 gallons/acre/day.

19. **VARIANCES:** The licensee is granted the following variance(s) from Part 115 and/or the Part 115 Rules: None.

20. **SPECIAL CONDITIONS:**

- a. The licensee shall place a compacted layer of not less than six inches of earthen material, unless an exemption is granted, of suitable cover material on all exposed solid waste by the end of each working day, as required by R 299.4429(1) of the Part 115 Rules. Suitable cover shall be either uncontaminated soil or an alternate cover approved by the MMD, listed in Item i, below. Alternate cover shall be restricted as indicated in Item ii and applied as per the approved operational plan submitted by the licensee.

- i. Approved alternate cover shall be any of the following:

Product/Waste Material	Source	Monthly Volume
Concover	New Waste Concepts	N/A
Fabrisoil	Fabrisoil, Inc.	N/A
Auto Fluff	A & L Iron and Metal Company	800 cubic yards

- ii. The above materials are approved for daily cover when used in the following manner:
 - (1) The licensee shall use the material as daily cover only. The material cannot be used for road building or fill in other areas of the Facility's operation.
 - (2) The licensee shall maintain copies of the testing performed on Class B and Class C materials in the facility operating record.

- (3) The licensee shall only stockpile material in a secure manner within the active cell.
- (4) This approval does not preclude the licensee from disposing of the material as waste in the active fill area instead of using the material as daily cover.
- (5) This approval shall immediately become void upon documentation by EGLE that the alternative cover is not being used in accordance with listed conditions, that the alternative cover is not providing the necessary protection, that the material no longer meets the alternative daily cover guidelines, or that the process producing the waste material has changed.
- (6) If the material does not meet the guidelines from Appendix 2 of Policy and Procedure OWMRP-115-10, for non-volatiles, the licensee shall ensure that fugitive dust emissions from this material do not occur. Acceptable methods to ensure fugitive emissions do not occur are:
 - (a) Implement a schedule to wet down material; or
 - (b) Cover the material with a tarp; or
 - (c) Apply an approved foam or other appropriate commercial dust control product.
- (7) This approval to use alternative cover shall expire upon expiration of this operating license.

b. Additional authorizations and/or reporting obligations may be required by Part 115. If material recovery, composting, waste diversion, electronics recycling, scrap tire collection, or solid waste processing/transfer activities are also being conducted at this Facility, please contact your MMD District Office to evaluate the need for additional authorizations and/or reporting.

21. **TERM:** This license shall remain in effect until its expiration date, unless revoked or continued in effect, as provided by, the Administrative Procedures Act, 1969 PA 306, as amended, or unless superseded by the issuance of a subsequent license.

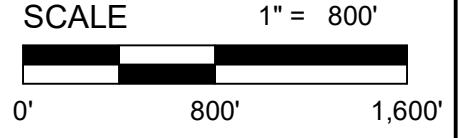
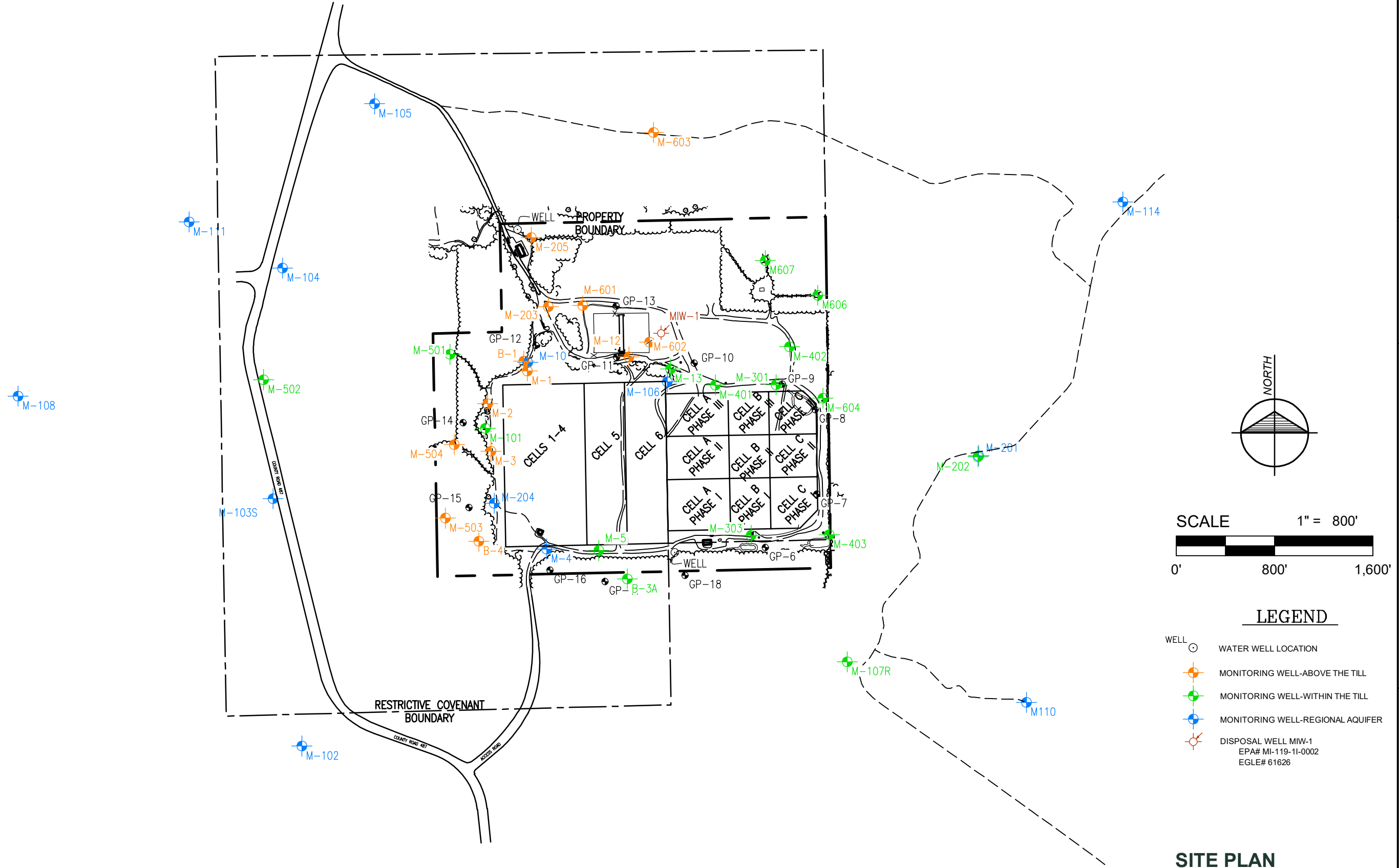
END OF LICENSE

If you need this information in an alternate format, contact EGLE-Accessibility@Michigan.gov or call 800-662-9278.

EGLE does not discriminate on the basis of race, sex, religion, age, national origin, color, marital status, disability, political beliefs, height, weight, genetic information, or sexual orientation in the administration of any of its programs or activities, and prohibits intimidation and retaliation, as required by applicable laws and regulations. Questions or concerns should be directed to the Nondiscrimination Compliance Coordinator at EGLE-NondiscriminationCC@Michigan.gov or 517 249-0906.

This form and its contents are subject to the Freedom of Information Act and may be released to the public.

Attachment A



- LEGEND**
- WELL WATER WELL LOCATION
 - MONITORING WELL-ABOVE THE TILL
 - MONITORING WELL-WITHIN THE TILL
 - MONITORING WELL-REGIONAL AQUIFER
 - DISPOSAL WELL MIW-1
EPA# MI-119-11-0002
EGLE# 61626

SITE PLAN
Figure 1

P:\240005\CADD-Data\C3D\03_Eng\240005_MOA License Plan.dwg Tab: Site Plan Saved by: aesegerind 6/25/2024 1:44 PM Plotted by: Adam Segerind 6/25/2024 1:44 PM

Gosling Czubak
engineering sciences, inc.
1260 Business Park Drive, Traverse City, Michigan
231-946-9191 800-968-1062
www.goslingczubak.com info@goslingczubak.com

**CIVIL ENGINEERING | SURVEYING | ENVIRONMENTAL SERVICES | GEOTECHNICAL
CONSTRUCTION SERVICES | DRILLING | LANDSCAPE ARCHITECTURE**

Job #:	240005
Date:	6/25/2024
Scale:	1"=800'
Drawn:	DJT
Chk'd:	AES
Rev.:	-

Site Plan
Montmorency / Oscoda / Alpena
Solid Waste Management Authority

Location:
PART OF SECTION 6
T 29N, R 03E,
LOUD TOWNSHIP
MONTMORENCY COUNTY, MICHIGAN
Sheet 1