



Michigan Department of Environmental Quality
Waste Management and Radiological Protection Division

SOLID WASTE DISPOSAL AREA OPERATING LICENSE

This license is issued under the provisions of Part 115, Solid Waste Management, of the Natural Resources and Environmental Protection Act, 1994 PA 451, as amended, MCL 324.11501 et seq., and authorizes the operation of this solid waste disposal area (Facility) in the state of Michigan. This license does not obviate the need to obtain other authorizations as may be required by state law.

FACILITY NAME: Ottawa County Farms Landfill

LICENSEE/OPERATOR: Ottawa County Landfill

FACILITY OWNER: Ottawa County Landfill, Inc.

PROPERTY OWNER: Ottawa County Landfill, Inc.

FACILITY TYPE(S): Municipal Solid Waste Landfill and Solid Waste Processing Plant

FACILITY ID NUMBER: 403061

COUNTY: Ottawa

LICENSE NUMBER: 9537

ISSUE DATE: November 26, 2018

EXPIRATION DATE: November 26, 2023

FACILITY DESCRIPTION: The Ottawa County Farms Landfill, a municipal solid waste landfill and solid waste processing plant, consists of 321.54 acres located in W 1/2 of the SW 1/2 of Section 26, and the SE 1/4 of Section 27, Polkton Township, Ottawa County, Michigan, as identified in Attachment A and fully described in this license.

AREA AUTHORIZED FOR DISPOSAL OF SOLID WASTE: As identified in Item 2.

RESPONSIBLE PARTY: Mr. Thomas Mahoney, General Manager
Ottawa County Farms Landfill
15550 68th Avenue
Coopersville, Michigan 49404
616-662-6839

RENEWAL OPERATING LICENSE: This License Number 9537 supersedes and replaces Solid Waste Disposal Area Operating License Number 9396 issued to Ottawa County Farms Landfill on June 27 2014.

This license is subject to revocation by the Director of the Michigan Department of Environmental Quality, if the Director finds that this Facility is not being constructed or operated in accordance with the approved plans, the conditions of a permit or license, Part 115, or the rules promulgated under Part 115. Failure to comply with the terms and provisions of this license may result in legal action leading to civil and/or criminal penalties pursuant to Part 115. This license shall be available through the licensee during its term and remains the property of the Director.

THIS LICENSE IS NOT TRANSFERABLE.

Rhonda S. Oyer, Manager, Solid Waste Section
Waste Management and Radiological Protection Division

Licensee: Ottawa County Landfill
Facility Name: Ottawa County Farm Landfill
Operating License Number: 9537
Issue Date: November 26, 2018

The licensee shall comply with all terms of this license and the provisions of Part 115 and the administrative rules implementing Part 115 (Part 115 Rules). This license includes the license application and any attachments to this license.

1. The licensee shall operate the Facility in a manner that will prevent violations of any state or federal law.
2. The following portions of the Facility are authorized to receive solid waste by this license:

ACTIVE PORTIONS NOT AT FINAL GRADE: The area(s) identified as Cell B Extension, Cell B/C Transition, Cells C-E, Phases 1-5, portions of Cell A Extension, portions of Cell B, Phase 6, and Phase 7 were authorized to receive waste by the previous license. This area's total acreage is 140.29 acres.

3. The following portions of the Facility **WILL BE** authorized to receive solid waste by this license following approval by the Michigan Department of Environmental Quality (MDEQ) of construction certification:

UNCONSTRUCTED AREA(S) WITH FINANCIAL ASSURANCE: The area(s) identified as Phase 9, totaling 11.09 acres, are included in the calculation of financial assurance as required by Section 11523 of Part 115. This portion(s) of the Facility shall be authorized to receive waste, as part of this license, when acceptable certification is submitted to the MDEQ, as required by Section 11516(5) of Part 115, and determined by the MDEQ to be consistent with Part 115 and the Part 115 Rules. The certification shall verify that construction of this area(s) was in accordance with the Construction Permit(s) listed in Item 8 of this license, Part 115, and the Part 115 Rules.

4. The following portions of the Facility are **NOT** authorized to receive solid waste by this license:

a. **UNCONSTRUCTED AREA(S) WITHOUT FINANCIAL ASSURANCE:** The area(s) identified as Phase 8, Phase 10, Phase 11, Phase 12, and Phase 13 are not constructed and are not included in the calculation of financial assurance as required by Section 11523 of Part 115. This area's total acreage is 55.04 acres.

b. **CLOSED UNIT(S) OR A PORTION OF A UNIT WHERE THE FINAL COVER HAS BEEN CERTIFIED CLOSED AND ACCEPTED BY THE MDEQ:** The following unit(s) and/or portion(s) are closed:

EXISTING UNIT(S): The unit(s) or portion(s) of unit(s) identified as Cells A-E to Station E-34 and portions of Phase A Extension A, and Portions of Phase 3, 4, and 5 had final closure certified on December 2, 1988, April 3, 1998, and May 19, 2016. This certification was reviewed and approved by the MDEQ on May 1, 1998, and June 23, 2016. This area's total acreage is 35.70 acres.

5. The attached map (Attachment A) shows the Facility, the area permitted for construction, monitoring points, leachate storage units, site roads, other disposal areas, and related appurtenances.
6. Issuance of this license is conditioned on the accuracy of the information submitted by the Applicant in the Application for License to Operate a Solid Waste Disposal Area (Application) received by the MDEQ on August 7, 2018, and any subsequent amendments. Any material or intentional inaccuracies found in that information is grounds for the revocation or modification of this license and may be grounds for enforcement action. The licensee shall inform the MDEQ's Waste Management and Radiological Protection Division (WMRPD), Grand Rapids District Supervisor, of any inaccuracies in the information in the Application upon discovery.
7. This license is issued based on the MDEQ's review of the Application, submitted by Ottawa County Farms Landfill, Inc., for the Ottawa County Farms Landfill, Inc., dated August 2, 2018, and modified on August 9, 2018 and November 8, 2018. The Application consists of the following:
 - a. Application Form EQP 5507.
 - b. Application fee in the amount of \$15,500.00.
 - c. Certification of construction by N/A.

Licensee: Ottawa County Landfill
Facility Name: Ottawa County Farm Landfill
Operating License Number: 9537
Issue Date: November 26, 2018

d. Waste Characterization: N/A.

e. Restrictive Covenant:

The October 3, 2000, restrictive covenant on 246 acres is on file at the Ottawa County Register of Deeds recorded on June 1, 2001, as Liber 3090 pages 414-417. A copy is on file with the MDEQ.

f. Perpetual Care Fund Agreement, established as a standby trust account, signed by Ms. Marsha Lacey, Assistant Treasurer on October 14, 2014, was executed by the MDEQ on October 30, 2014.

g. Financial Assurance.

i. Financial Assurance Required:

The amount of financial assurance required for this Facility was calculated based on the calculation worksheet form EQP 5507A entitled, "Form A, Financial Assurance Required," and is \$27,753,944.32.

The Facility has provided financial assurance totaling \$30,006,942.32, based on the requirements of Section 11523 of Part 115, consisting of a combination of the Perpetual Care Fund established under Section 11525 of Part 115, bonds, and the financial capability of the Applicant as evidenced by a financial test. The financial assurance mechanisms used by the Facility are summarized below in Items ii, iii, and iv, respectively.

ii. Financial Assurance Provided Via a Perpetual Care Fund:

The Perpetual Care Fund Agreement statement showed a balance of \$2,257,000.00 in the Facility's Perpetual Care Fund as of August 14, 2018. Of this amount, the MDEQ has granted the request to use \$2,257,000.00 toward the total amount of financial assurance required.

iii. Financial Assurance Provided Via Bond:

The following financial assurance has been received from the Applicant to meet the amount of financial assurance required:

Surety Bond	\$27,749,944.32
Total Amount Received:	\$27,749,944.32

iv. Financial Assurance Provided Via a Financial Test for a Type II Landfill: N/A.

v. Financial Assurance Updates Required:

For Type II landfills, the financial assurance cost estimates of closure and postclosure activities must be updated annually and the corresponding requisite amount of financial assurance must be adjusted annually for the costs of inflation. The corresponding financial assurance, as adjusted for inflation and other factors, is due one year from the date of this license, and each year thereafter.

vi. Other Required Financial Assurance: N/A.

8. The following documents approved with Construction Permit Number 4156 issued to the Ottawa County Farms Landfill, Inc. on October 7, 2016, are incorporated in this license by reference:

a. Ottawa County Farms Landfill Lateral & Vertical Expansion Volumes I-IV.

b. Engineering Plan Sheets 1-34 amended September 9, 2016.

Licensee: Ottawa County Landfill
 Facility Name: Ottawa County Farm Landfill
 Operating License Number: 9537
 Issue Date: November 26, 2018

c. "Environmental Monitoring Plan," amended September 2016.

9. The following additional documents, approved since the issuance of the construction permit(s) referenced in Item 8, are incorporated in this license by reference: None.
10. Consent Order/Judgment Number: N/A.
11. The licensee shall repair any portion of the certified liner or leachate collection system that is found to be deficient or damaged during the term of this license unless determined otherwise by the MDEQ.
12. The licensee shall have repairs to any portion of the certified liner or leachate collection system recertified by a registered professional engineer in accordance with R 299.4921 of the Part 115 Rules and approved by the MDEQ before receiving waste in that portion of the certified liner or leachate collection system. The licensee shall submit the recertification to the MDEQ's WMRPD, Grand Rapids District Office Supervisor, for review and approval.
13. The licensee shall conduct hydrogeological monitoring in accordance with the approved hydrogeological monitoring plan, dated September 2016. The sampling analytical results shall be submitted to the MDEQ's WMRPD, Grand Rapids District Office.
14. Modifications to the approved hydrogeological monitoring plan referenced in Item 13 may be approved, in writing, by the WMRPD, Grand Rapids District Supervisor. Proposed revisions must be submitted in a format specified by the MDEQ.
15. Leachate may be recirculated if a leachate recirculation plan has been approved, in writing, by the WMRPD, Grand Rapids District Supervisor.
16. Modifications to approved engineering plans that constitute an upgrading, as defined in R 299.4106a(l) of the Part 115 Rules, may be approved, in writing, by the WMRPD, Grand Rapids District Supervisor.
17. Requests for alternate daily cover may be approved, in writing, by the WMRPD, Grand Rapids District Supervisor.
18. Leakage Control Criteria:

The active portions of the unit(s) authorized to receive waste by this license is a monitorable unit(s) which is located over a natural soil barrier and that is in compliance with the provisions of R 299.4422(2) of the Part 115 Rules.

19. **VARIANCES:** None.

20. **SPECIAL CONDITIONS:**

a. The licensee shall place a compacted layer of not less than six inches of earthen material, unless an exemption is granted, of suitable cover material on all exposed solid waste by the end of each working day, as required by R 299.4429(1) of the Part 115 Rules. Suitable cover shall be either uncontaminated soil or an alternate cover approved by the WMRPD, listed in Item i, below. Alternate cover shall be restricted as indicated in Item ii and applied as per the approved operational plan submitted by the licensee.

i. Approved alternate cover shall be any of the following:

<u>Product/Waste Material</u>	<u>Source</u>	<u>Monthly Volume</u>
Autofluff	Louis Padnos Iron & Metal	Varies
Foundry Sand	Sparta Foundry, CMI, and Tri Cast	Varies

ii. The above materials are approved for daily cover when used in the following manner:

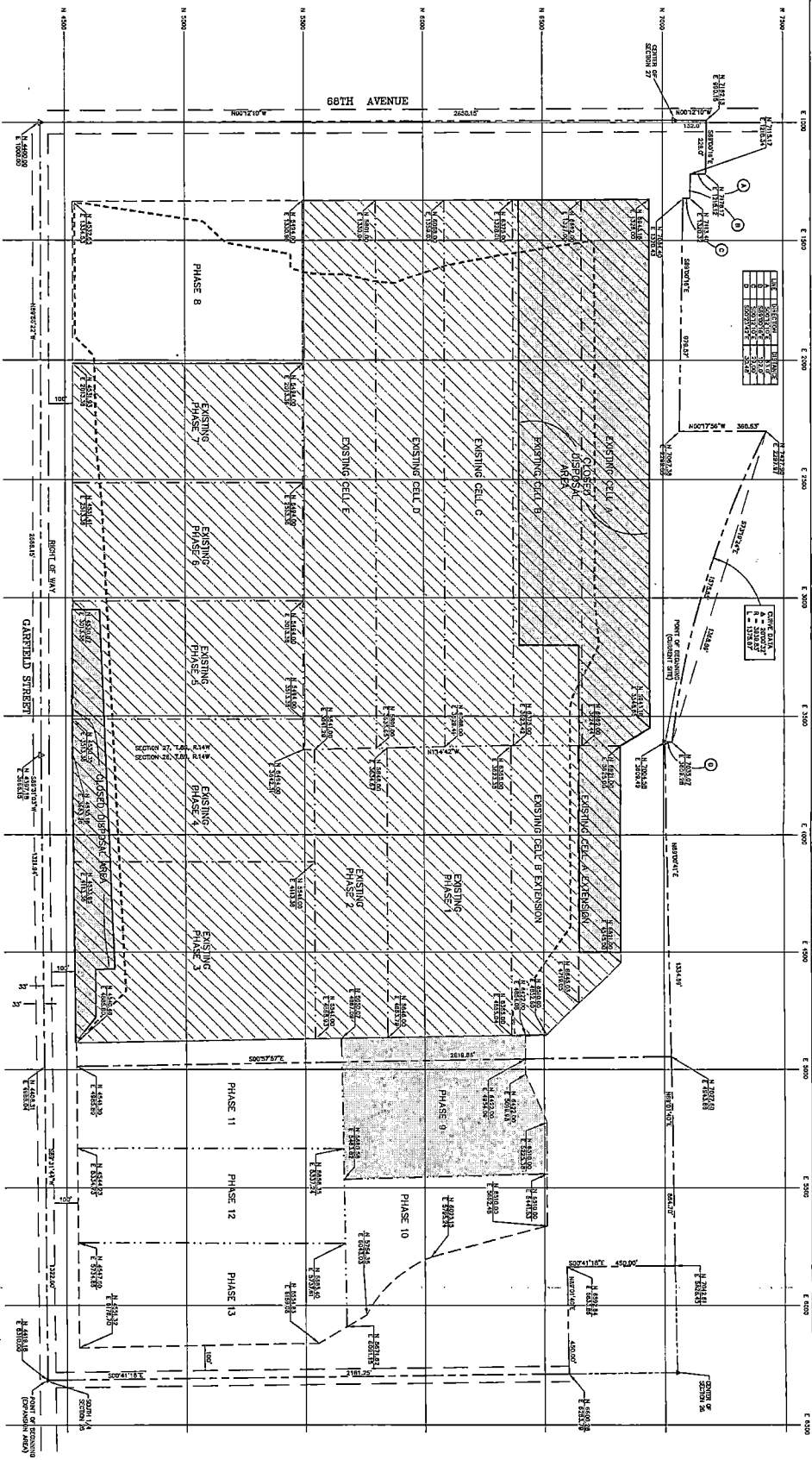
Licensee: Ottawa County Landfill
Facility Name: Ottawa County Farm Landfill
Operating License Number: 9537
Issue Date: November 26, 2018

- (1) The licensee shall use the material as daily cover only. The material cannot be used for road building or fill in other areas of the Facility's operation.
- (2) The licensee shall maintain copies of the testing performed on Class B and Class C materials in the facility operating record.
- (3) The licensee shall only stockpile material in a secure manner within the active cell.
- (4) This approval does not preclude the licensee from disposing of the material as waste in the active fill area instead of using the material as daily cover.
- (5) This approval shall immediately become void upon documentation by the MDEQ that the alternative cover is not being used in accordance with listed conditions, that the alternative cover is not providing the necessary protection, that the material no longer meets the alternative daily cover guidelines, or that the process producing the waste material has changed.
- (6) If the material does not meet the guidelines from Attachment 2 of Policy and Procedure OWMRP-115-10, for nonvolatiles, the licensee shall ensure that fugitive dust emissions from this material do not occur. Acceptable methods to ensure fugitive emissions do not occur are:
 - (a) Implement a schedule to wet down material; or
 - (b) Cover the material with a tarp; or
 - (c) Apply an approved foam or other appropriate commercial dust control product.
- (7) This approval to use alternative cover shall expire upon expiration of this operating license.

21. **TERM:** This license shall remain in effect until its expiration date, unless revoked or continued in effect, as provided by, the Administrative Procedures Act, 1969 PA 306, as amended, or unless superseded by the issuance of a subsequent license.

END OF LICENSE

Attachment A



CELL NO.	TOTAL AREA	ACTIVE AREA	CLOSED AREA	UNCONSTRUCTED AREA
CELL A	1,111	1,111	0	0
CELL B	1,111	1,111	0	0
CELL C	1,111	1,111	0	0
CELL D	1,111	1,111	0	0
CELL E	1,111	1,111	0	0
CELL A EXTENSION	427	427	0	0
CELL B EXTENSION	1,111	1,111	0	0
CELL C EXTENSION	1,111	1,111	0	0
CELL D EXTENSION	1,111	1,111	0	0
CELL E EXTENSION	1,111	1,111	0	0
PHASE 0	400	400	0	0
PHASE 1	1,111	1,111	0	0
PHASE 2	1,111	1,111	0	0
PHASE 3	1,111	1,111	0	0
PHASE 4	1,111	1,111	0	0
PHASE 5	1,111	1,111	0	0
PHASE 6	1,111	1,111	0	0
PHASE 7	1,111	1,111	0	0
PHASE 8	1,111	1,111	0	0
PHASE 9	1,111	1,111	0	0
PHASE 10	1,111	1,111	0	0
PHASE 11	1,111	1,111	0	0
PHASE 12	1,111	1,111	0	0
PHASE 13	1,111	1,111	0	0
TOTAL CONSTRUCTION	11,111	11,111	0	0
TOTAL UNCONSTRUCTED	0	0	0	0

NOTES:
 1. DATA PRESERVED HEREIN AS OF JULY 17, 2017.

LEGEND:
 - - - - - PROPERTY LINE
 - - - - - SOLID WASTE BOUNDARY
 - - - - - CELL BOUNDARY
 - - - - - SURVEY CONTROL POINT
 [Hatched Box] CONSTRUCTED AREA
 [Dotted Box] CLOSED DISPOSAL AREA
 [Diagonal Lines Box] PLANNED CONSTRUCTION
 [White Box] UNCONSTRUCTED AREA

WEAVER CONSULTANTS GROUP
 1500 WESTLAND AVENUE, SUITE 200
 ANN ARBOR, MI 48106
 TEL: 734.769.8800
 WWW.WAVER-CG.COM

REPUBLIC SERVICES
 15550 68TH AVE.
 COOVERSVILLE, MI 48117
 TEL: 734.777.7700
 WWW.REPUBLICSERVICES.COM

NO.	DATE	REVISION DESCRIPTION
1	07/17/17	ISSUED FOR PUBLIC COMMENTS, PERIOD 10/10/17-10/20/17
2	07/17/17	ISSUED FOR PUBLIC COMMENTS, PERIOD 10/10/17-10/20/17

OPERATING LICENSE SITE MAP
 OTTAWA COUNTY FARMS LANDFILL
 OTTAWA COUNTY, MICHIGAN

PREPARED FOR:
REPUBLIC SERVICES
 OTTAWA COUNTY
 LANDFILL, INC.
 15550 68TH AVE.
 COOVERSVILLE, MI

FIGURE 1