



Michigan Department of Environment, Great Lakes, and Energy
Materials Management Division

SOLID WASTE DISPOSAL AREA OPERATING LICENSE

Effective April 22, 2019, the Michigan Department of Environmental Quality, by Executive Order Number 2019-06, became the Michigan Department of Environment, Great Lakes, and Energy (EGLE). Effective April 22, 2019, the Waste Management and Radiological Protection Division became the Materials Management Division (MMD).

This license is issued under the provisions of Part 115, Solid Waste Management, of the Natural Resources and Environmental Protection Act, 1994 PA 451, as amended, MCL 324.11501 et seq., and authorizes the operation of this solid waste disposal area (Facility) in the state of Michigan. This license does not obviate the need to obtain other authorizations as may be required by state law.

FACILITY NAME: People's Landfill, Inc.

LICENSEE/OPERATOR: People's Landfill, Inc.

FACILITY OWNER: People's Landfill, Inc.

PROPERTY OWNER: People's Landfill, Inc.

FACILITY TYPE(S): Municipal Solid Waste Landfill

FACILITY ID NUMBER: 437908

COUNTY: Saginaw

LICENSE NUMBER: 9681

ISSUE DATE: September 30, 2022

EXPIRATION DATE: September 30, 2027

FACILITY DESCRIPTION: The People's Landfill, Inc., a municipal solid waste landfill, consists of 163.5 acres located in the NW ¼ of Section 15, T10N, R5E, Taymouth Township, Saginaw County, Michigan, as identified in Attachment A and fully described in this license.

AREA AUTHORIZED FOR DISPOSAL OF SOLID WASTE: Trench 1A, 2A, and 3 (8.4 acres), a portion of Cell 4 (10.4 acres), Cell 6N (8 acres), Cell 7 (13.5 acres), Cell 8, 9, and 10 (25.9 acres), and a portion of the old "Act 87" area (3.8 acres) totaling 70.0 acres.

RESPONSIBLE PARTY: John Gall, District Manager
People's Landfill, Inc.
4143 East Rathbun Road
Birch Run, Michigan 48415
989-777-1145

RENEWAL OPERATING LICENSE: This License Number 9681 supersedes and replaces Solid Waste Disposal Area Operating License Number 9646 issued to People's Landfill, Inc. on June 8, 2021.

This license is subject to revocation by the Director of the Michigan Department of Environment, Great Lakes, and Energy, if the Director finds that this Facility is not being constructed or operated in accordance with the approved plans, the conditions of a permit or license, Part 115, or the rules promulgated under Part 115. Failure to comply with the terms and provisions of this license may result in legal action leading to civil and/or criminal penalties pursuant to Part 115. This license shall be available through the licensee during its term and remains the property of the Director.

THIS LICENSE IS NOT TRANSFERABLE.

Rhonda S. Oyer, Manager, Solid Waste Section
Materials Management Division

Licensee: People's Landfill, Inc.
Facility Name: People's Landfill, Inc.
Operating License Number: 9681
Issue Date: September 30, 2022

The licensee shall comply with all terms of this license and the provisions of Part 115 and the administrative rules implementing Part 115 (Part 115 Rules). This license includes the license application and any attachments to this license.

1. The licensee shall operate the Facility in a manner that will prevent violations of any state or federal law.
2. The following portions of the Facility are authorized to receive solid waste by this license:

ACTIVE PORTIONS NOT AT FINAL GRADE: The area(s) identified as Trench 1A, 2A, and 3 (8.4 acres), a portion of Cell 4 (10.4 acres), Cell 6N (8 acres), Cell 7 (13.5 acres), Cell 8, 9, and 10 (25.9 acres), and a portion of the old "Act 87" (3.8 acres) were authorized to receive waste by the previous license. This area's total acreage is 70 acres.

3. The following portions of the Facility **WILL BE** authorized to receive solid waste by this license following approval by EGLE of construction certification:

UNCONSTRUCTED AREA(S) WITH FINANCIAL ASSURANCE: The area(s) identified as Cell 6S Floor, totaling 7.4 acres, are included in the calculation of financial assurance as required by Section 11523 of Part 115. This portion(s) of the Facility shall be authorized to receive waste, as part of this license, when acceptable certification is submitted to EGLE, as required by Section 11516(5) of Part 115, and determined by EGLE to be consistent with Part 115 and the Part 115 Rules. The certification shall verify that construction of this area(s) was in accordance with the Construction Permit(s) listed in Item 8 of this license, Part 115, and the Part 115 Rules.

4. The following portions of the Facility are **NOT** authorized to receive solid waste by this license:

CLOSED UNIT(S) OR A PORTION OF A UNIT WHERE THE FINAL COVER HAS BEEN CERTIFIED CLOSED AND ACCEPTED BY EGLE: The following unit(s) and/or portion(s) are closed:

- i. **PRE-EXISTING UNIT(S):** The unit(s) identified as 16.5 acres of Act 87 Area had final closure certified on October 14, 1998. This certification was reviewed and approved by EGLE on November 19, 1999. This area's total acreage is 16.5 acres.
- ii. **EXISTING UNIT(S):** The unit(s) or portion(s) of unit(s) identified as Trenches 1B and 2B (5.2 acres), portion of Cell 4 (1.5 acres), portion of Act 87 (4.3 acres) had final closure certified on November 24, 2003. This certification was reviewed and approved by EGLE on November 14, 2012. This area's total acreage is 11 acres.

5. The attached map (Attachment A) shows the Facility, the area permitted for construction, monitoring points, leachate storage units, site roads, other disposal areas, and related appurtenances.
6. Issuance of this license is conditioned on the accuracy of the information submitted by the Applicant in the Application for License to Operate a Solid Waste Disposal Area (Application) received by EGLE on July 8, 2022, and any subsequent amendments. Any material or intentional inaccuracies found in that information is grounds for the revocation or modification of this license and may be grounds for enforcement action. The licensee shall inform EGLE's MMD Bay City District Supervisor, of any inaccuracies in the information in the Application upon discovery.
7. This license is issued based on EGLE's review of the Application, submitted by Debora Johnston, for the People's Landfill, dated July 8, 2022, and revised July 21, 2022. The Application consists of the following:
 - a. Application Form EQP 5507.
 - b. Application fee in the amount of \$2,500.00.
 - c. Certification of construction by N/A, dated N/A.
 - d. Waste Characterization: N/A.

Licensee: People's Landfill, Inc.
Facility Name: People's Landfill, Inc.
Operating License Number: 9681
Issue Date: September 30, 2022

e. Restrictive Covenant:

The October 5, 2002 restrictive covenant on 163.5 acres is on file at the Saginaw County Register of Deeds recorded on November 1, 2002, as Liber 2233 pages 838. A copy is on file with EGLE.

f. Perpetual Care Fund Agreement, established as a standby trust account, signed by Diana Seng, Authorized Representative, on January 13, 2015, was executed by EGLE on January 26, 2015.

g. Financial Assurance.

i. Financial Assurance Required:

The amount of financial assurance required for this Facility was calculated based on the calculation worksheet form EQP 5507A entitled, "Form A, Financial Assurance Required," and is \$17,697,221.00.

The Facility has provided financial assurance totaling \$17,697,221.00, based on the requirements of Section 11523 of Part 115, consisting of a combination of the Perpetual Care Fund established under Section 11525 of Part 115, bonds, and the financial capability of the Applicant as evidenced by a financial test. The financial assurance mechanisms used by the Facility are summarized below in Items ii, iii, and iv, respectively.

ii. Financial Assurance Provided Via a Perpetual Care Fund:

The Perpetual Care Fund Agreement statement showed a balance of \$2,506,000.00 in the Facility's Perpetual Care Fund as of October 20, 2021. Of this amount, EGLE has granted the request to use \$2,506,000.00 toward the total amount of financial assurance required.

iii. Financial Assurance Provided Via Bond:

The following financial assurance has been received from the Applicant to meet the amount of financial assurance required:

Surety Bond	\$15,191,221.00
Total Amount Received:	\$15,191,221.00

iv. Financial Assurance Provided Via a Financial Test for a Type II Landfill: N/A.

v. Financial Assurance Updates Required:

For Type II landfills, the financial assurance cost estimates of closure and postclosure activities must be updated annually and the corresponding requisite amount of financial assurance must be adjusted annually for the costs of inflation. The corresponding financial assurance, as adjusted for inflation and other factors, is due one year from the date of this license, and each year thereafter.

vi. Other Required Financial Assurance: N/A.

8. The following documents approved with Construction Permit Number(s) 0079, 0287, and 0409 issued to the People's Landfill, Inc. on September 28, 1982, March 22, 1993, and December 5, 2022, are incorporated in this license by reference:

- a. Engineering Plans, prepared by Eldredge Engineering Associates, Inc., dated September 30, 1980.
- b. Package containing Site Plans and Characteristics, prepared by Eldredge Engineering Associates, Inc., dated October 10, 1980.

Licensee: People's Landfill, Inc.
Facility Name: People's Landfill, Inc.
Operating License Number: 9681
Issue Date: September 30, 2022

- c. Environmental Assessment, prepared by Eldredge Engineering Associates, Inc., dated November 17, 1980.
 - d. Act 641 Construction Permit Application, prepared by City Management Corporation, dated November 1992.
 - e. Type II Landfill Expansion Drawings, prepared by RMT, Inc., dated November 1992, revised March 1993.
 - f. Construction Permit Application, dated July 2002.
 - g. Engineering Plans, prepared by Midwestern Consulting, dated July 31, 2002, revised November 15, 2002, revised July 2021.
9. The following additional documents, approved since the issuance of the construction permit(s) referenced in Item 8, are incorporated in this license by reference:
- a. Expansion Drawings, prepared by Rowe Engineering, Inc., dated August 31, 1984, approved February 20, 1985.
 - b. As Built Construction Drawings, prepared by Rowe Engineering, Inc., dated February 17, 1986, approved on May 19, 1986.
 - c. Engineering Drawings, prepared by Rowe Engineering, Inc., August 18, 1986.
 - d. Revised Plans for Leachate Collection System in Northeast and East Cells, prepared by Rowe Engineering, Inc., dated June 1987, approved on July 17, 1987.
 - e. Perimeter Leachate Collection System, prepared by City Management Corporation, dated January 7, 1992, approved on March 9, 1992.
 - f. Cell 10 Construction Plans Drawings, prepared by NTH Consultants, LTD, dated March 1999.
 - g. Construction of Forcemain System Drawings, prepared by NTH Consultants, LTD, dated September 2000.
 - h. Leachate and Landfill Gas Condensate Recirculation Plan prepared by Golder Associates, dated July 17, 2000, revised January 16, 2001, and approved on January 19, 2001.
 - i. Cell 9 Construction Plans Drawings, prepared by NTH Consultants, LTD, dated November 2000, revised January 2001.
 - j. Hydrogeological Monitoring Plan (HMP) for People's Landfill, Inc., prepared by NTH Consultants, Ltd., dated July 2002, revised November 2002, and approved on December 5, 2002. The HMP was revised on the following dates: May 2003, September 2007, March 2008, and July 2009. Addendums to the HMP were also approved and dated March 18, 2004, July 9, 2009, October 27, 2016, July 18, 2017, and November 29, 2021.
 - k. North Storm Water Detention Basin Design Drawings, prepared by Midwestern Consulting, dated April 22, 2002.
 - l. Final Cover Plan Drawings, prepared by Midwestern Consulting, dated December 31, 2002.
 - m. Cell 10 North (10N) & Final Cover Constr. Plan Drawings, prepared by Midwestern Consulting, dated Feb. 28, 2003.
 - n. Leachate and Landfill Gas Condensate Recirculation Plan, prepared by Midwestern Consulting, dated June 2003, revised July 29, 2003, approved on July 23, 2003, with revisions.
 - o. Report titled, "Report on: Inorganic Indicator Parameter Evaluation, People's Landfill, Inc., Birch Run, Michigan", prepared by NTH Consultants, dated March 18, 2004, and approved on October 19, 2004.

Licensee: People's Landfill, Inc.
Facility Name: People's Landfill, Inc.
Operating License Number: 9681
Issue Date: September 30, 2022

- p. Cell 7 Construction Drawings, prepared by Midwestern Consulting, dated January 7, 2005.
 - q. Work Plan titled, "Act 87 Area Work Plan for Initial Monitor Well Installation and Groundwater Quality Evaluation", prepared by STS Consultants, Ltd., dated July 14, 2005, approved with conditions on September 20, 2005.
 - r. 2007 Gas Installation Drawings, prepared by Midwestern Consulting, dated June 29, 2007, revised August 17, 2007.
 - s. Act 87 Area Remediation Drawings, prepared by STS Consultants, dated August 2007.
 - t. Report titled, "Shallow Sand Evaluation for Monitorability" prepared by STS Consultants, dated November 14, 2007.
 - u. Revisions to project specifications and CQA Plan for the Act 87 Area slurry wall project, prepared by STS Consultants, dated June 17, 2008, and approved June 26, 2008.
 - v. Remedial Action Plan titled, "Act 87 Area, Remedial Action Plan" prepared by STS Consultants, dated November 3, 2008, and approved on November 26, 2008.
 - w. 2009 Gas Header & Well Installation Drawings, prepared by Midwestern Consulting, dated August 7, 2009.
 - x. Cell 6N Construction Documentation Report, prepared by Weaver Consultants Group, dated September 2016.
 - y. Cell 6N Overlay Construction Documentation Report, prepared by Weaver Consultants Group, dated August 2017.
 - z. Cell 6N Overlay Construction Documentation Report, prepared by Weaver Consultants Group, dated September 12, 2019.
 - aa. Cell 6 Permit Upgrade, prepared by CTI and Associates, Inc., dated November 3, 2021.
10. Consent Order/Judgment Number: OWMRP Consent Order Number 115-02-02 entered on June 5, 2002, and OWMRP Consent Order Number 115-03-15 entered on April 27, 2015 are incorporated into this license by reference.
11. The licensee shall repair any portion of the certified liner or leachate collection system that is found to be deficient or damaged during the term of this license unless determined otherwise by EGLE.
12. The licensee shall have repairs to any portion of the certified liner or leachate collection system recertified by a registered professional engineer in accordance with R 299.4921 of the Part 115 Rules and approved by EGLE before receiving waste in that portion of the certified liner or leachate collection system. The licensee shall submit the recertification to EGLE's MMD Bay City District Supervisor, for review and approval.
13. The licensee shall conduct hydrogeological monitoring in accordance with the approved hydrogeological monitoring plan, dated July 9, 2009, with the most recent addendum approved on November 29, 2021. The sampling analytical results shall be submitted to EGLE's MMD Bay City District office.
14. Modifications to the approved hydrogeological monitoring plan referenced in Item 13 may be approved, in writing, by EGLE's MMD Bay City District Supervisor. Proposed revisions must be submitted in a format specified by EGLE.
15. Leachate may be recirculated if a leachate recirculation plan has been approved, in writing, by EGLE's MMD Bay City District Supervisor.
16. Modifications to approved engineering plans that constitute an upgrading, as defined in R 299.4106a(l) of the Part 115 Rules, may be approved, in writing, by EGLE's MMD Bay City District Supervisor.
17. Requests for alternate daily cover may be approved, in writing, by EGLE's MMD Bay City District Supervisor.

Licensee: People's Landfill, Inc.
 Facility Name: People's Landfill, Inc.
 Operating License Number: 9681
 Issue Date: September 30, 2022

18. Leakage Control Criteria:

The active portions of the unit(s) authorized to receive waste by this license is a monitorable unit(s) which is located over a natural soil barrier and that is in compliance with the provisions of R 299.4422(2) of the Part 115 Rules.

19. **VARIANCES:** The licensee is granted the following variance(s) from Part 115 and/or the Part 115 Rules: None.

20. **SPECIAL CONDITIONS:**

a. The licensee shall place a compacted layer of not less than six inches of earthen material, unless an exemption is granted, of suitable cover material on all exposed solid waste by the end of each working day, as required by R 299.4429(1) of the Part 115 Rules. Suitable cover shall be either uncontaminated soil or an alternate cover approved by the MMD, listed in Item i, below. Alternate cover shall be restricted as indicated in Item ii and applied as per the approved operational plan submitted by the licensee.

i. Approved alternate cover shall be any of the following:

<u>Product/Waste Material</u>	<u>Source</u>	<u>Monthly Volume</u>
(1) Fabrisoil		Per Manufactures specifications
(2) Sanifoam		Per manufactures specifications
(3) Concover		Per manufactures specifications
(4) Foundry Sands	General Motors - Saginaw Facility	As needed
(5) Shredded Tires		As needed
(6) Untreated wood chips		As needed

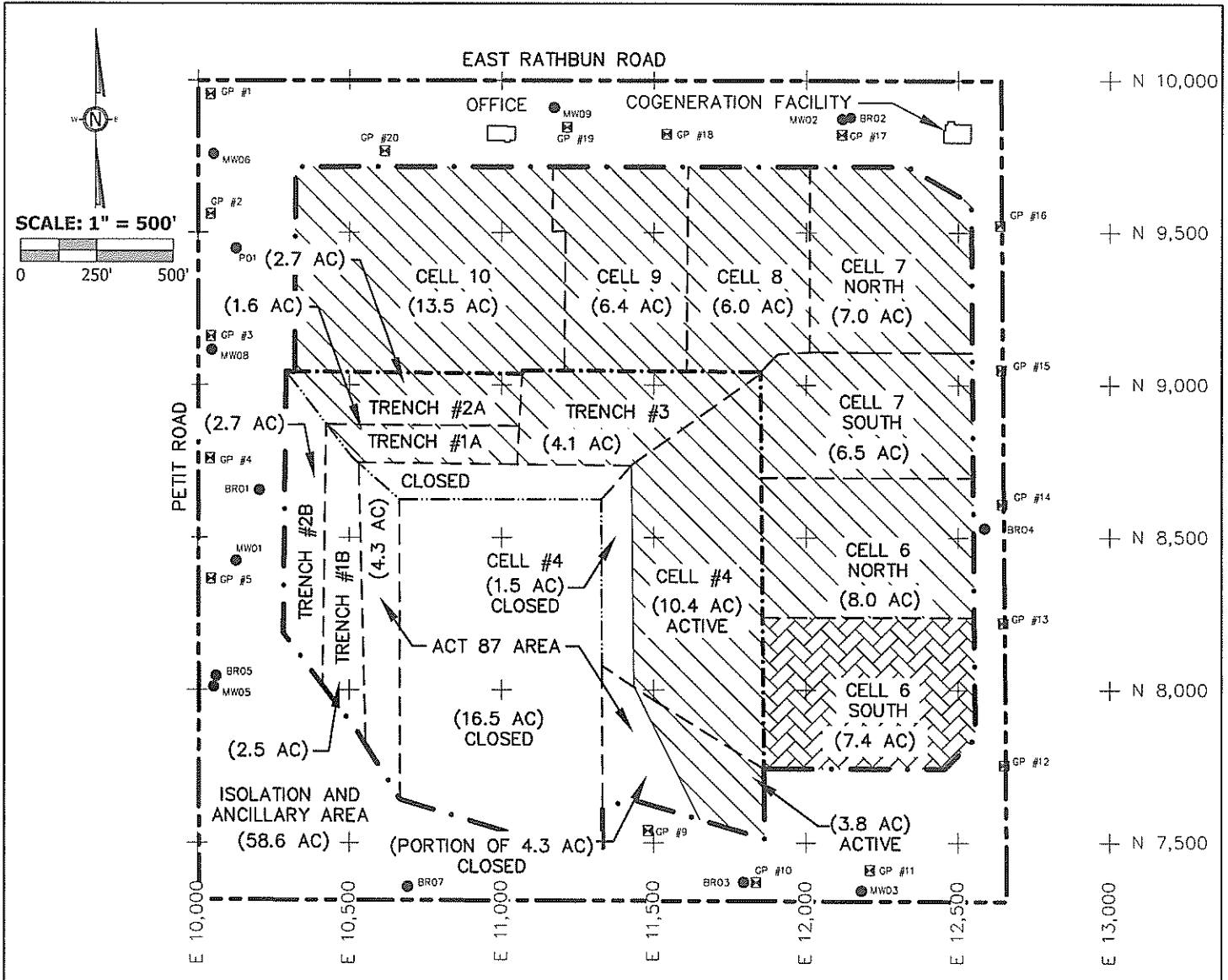
ii. The above materials are approved for daily cover when used in the following manner:

- (1) The licensee shall use the material as daily cover only. The material cannot be used for road building or fill in other areas of the Facility's operation.
- (2) The licensee shall maintain copies of the testing performed on Class B and Class C materials in the facility operating record.
- (3) The licensee shall only stockpile material in a secure manner within the active cell.
- (4) This approval does not preclude the licensee from disposing of the material as waste in the active fill area instead of using the material as daily cover.
- (5) This approval shall immediately become void upon documentation by EGLE that the alternative cover is not being used in accordance with listed conditions, that the alternative cover is not providing the necessary protection, that the material no longer meets the alternative daily cover guidelines, or that the process producing the waste material has changed.
- (6) If the material does not meet the guidelines from Attachment 2 of Policy and Procedure OWMRP-115-10, for nonvolatiles, the licensee shall ensure that fugitive dust emissions from this material do not occur. Acceptable methods to ensure fugitive emissions do not occur are:
 - (a) Implement a schedule to wet down material; or
 - (b) Cover the material with a tarp; or
 - (c) Apply an approved foam or other appropriate commercial dust control product.
- (7) This approval to use alternative cover shall expire upon expiration of this operating license.

Licensee: People's Landfill, Inc.
Facility Name: People's Landfill, Inc.
Operating License Number: 9681
Issue Date: September 30, 2022

21. **TERM:** This license shall remain in effect until its expiration date, unless revoked or continued in effect, as provided by, the Administrative Procedures Act, 1969 PA 306, as amended, or unless superseded by the issuance of a subsequent license.

END OF LICENSE



KEY

AREA LEGEND

	APPROXIMATE FACILITY BOUNDARY
	SOLID WASTE BOUNDARY
	ACT 641 BOUNDARY
	PHASE LIMITS
	VERTICAL EXPANSION BOUNDARY
	EXISTING GROUNDWATER MONITORING WELL
	LFG MONITORING PROBE

	AREA CERTIFIED WITH THIS LICENSE	0.0 AC.
	ACTIVE PORTIONS NOT AT FINAL GRADE	70.0 AC.
	CLOSED AREA	27.5 AC.
	UNCONSTRUCTED AREAS WITH FINANCIAL ASSURANCE	7.4 AC
	UNCONSTRUCTED AREAS WITHOUT FINANCIAL ASSURANCE	0.0 AC.
	ISOLATION AND ANCILLARY AREA	58.6 AC.

NOTE: ALL CELL GEOMETRY IS APPROXIMATE.

TOTAL PERMITTED AREA 163.5 AC.

PREPARED FOR

WASTE MANAGEMENT OF MICHIGAN
4143 E. Rathbun Road
Birch Run, Michigan 49315
989-777-1145

FACILITY MAP
PEOPLE'S LANDFILL
BIRCH RUN, MICHIGAN

REUSE OF DOCUMENTS
THIS DOCUMENT, AND THE DESIGNS INCORPORATED HEREIN, AS AN INSTRUMENT OF PROFESSIONAL SERVICE, IS THE PROPERTY OF WEAVER CONSULTANTS GROUP, AND IS NOT TO BE USED IN WHOLE OR IN PART, WITHOUT THE WRITTEN AUTHORIZATION OF WEAVER CONSULTANTS GROUP.

Weaver Consultants Group
GRAND RAPIDS, MICHIGAN
(616) 458-8052 www.wcgrp.com

DRAWN BY:	JDA
REVIEWED BY:	TAP
DATE:	06/03/2022
FILE:	0086-318-10
CAD:	PLF_Fac Map05.03.2022
FIGURE 1	

A:\PROJECTS\0086-318_People's Landfill\Facility Map\2022\PLF_Fac_Map_05.03.2022.dwg