



Michigan Department of Environment, Great Lakes, and Energy  
Materials Management Division

**SOLID WASTE DISPOSAL AREA OPERATING LICENSE**

Effective April 22, 2019, the Michigan Department of Environmental Quality, by Executive Order Number 2019-06, became the Michigan Department of Environment, Great Lakes, and Energy (EGLE). Effective April 22, 2019, the Waste Management and Radiological Protection Division became the Materials Management Division (MMD).

This license is issued under the provisions of Part 115, Solid Waste Management, of the Natural Resources and Environmental Protection Act, 1994 PA 451, as amended, MCL 324.11501 et seq., and authorizes the operation of this solid waste disposal area (Facility) in the state of Michigan. This license does not obviate the need to obtain other authorizations as may be required by state law.

FACILITY NAME: Tri-City Landfill

LICENSEE/OPERATOR: Waste Management of Michigan, Inc.

FACILITY OWNER: Waste Management of Michigan, Inc.

PROPERTY OWNER: Waste Management of Michigan, Inc.

FACILITY TYPE(S): Municipal Solid Waste Landfill

FACILITY ID NUMBER: 417640

COUNTY: Sanilac

LICENSE NUMBER: 9678

ISSUE DATE: August 4, 2022

EXPIRATION DATE: August 4, 2027

FACILITY DESCRIPTION: The Tri-City Landfill, a municipal solid waste landfill, consists of 195.4 acres located in the NW 1/4 and the SW 1/4 of Section 32, T12N, R12E, Bridgehampton Township, Sanilac County, Michigan, as identified in Attachment A and fully described in this license.

AREA AUTHORIZED FOR DISPOSAL OF SOLID WASTE: Cells 1 through 11 and Cell 14, totaling 41.3 acres.

RESPONSIBLE PARTY: John Gall, District Manager  
Waste Management of Michigan, Inc.  
426 North Ruth Road  
Carsonville, Michigan 48419  
810-621-9080

**RENEWAL OPERATING LICENSE:** This License Number 9678 supersedes and replaces Solid Waste Disposal Area Operating License Number 9592 issued to Waste Management of Michigan, Inc. on March 5, 2020.

This license is subject to revocation by the Director of the Michigan Department of Environment, Great Lakes, and Energy, if the Director finds that this Facility is not being constructed or operated in accordance with the approved plans, the conditions of a permit or license, Part 115, or the rules promulgated under Part 115. Failure to comply with the terms and provisions of this license may result in legal action leading to civil and/or criminal penalties pursuant to Part 115. This license shall be available through the licensee during its term and remains the property of the Director.

**THIS LICENSE IS NOT TRANSFERABLE.**

Rhonda S. Oyer, Manager, Solid Waste Section  
Materials Management Division

Licensee: Waste Management of Michigan, Inc.  
Facility Name: Tri-City Landfill  
Operating License Number: 9678  
Issue Date: August 4, 2022

The licensee shall comply with all terms of this license and the provisions of Part 115 and the administrative rules implementing Part 115 (Part 115 Rules). This license includes the license application and any attachments to this license.

1. The licensee shall operate the Facility in a manner that will prevent violations of any state or federal law.
2. The following portions of the Facility are authorized to receive solid waste by this license:

**ACTIVE PORTIONS NOT AT FINAL GRADE:** The area(s) identified as Cells 1 through 11 and Cell 14 were authorized to receive waste by the previous license. This area's total acreage is 41.3 acres.

3. The following portions of the Facility **WILL BE** authorized to receive solid waste by this license following approval by EGLE of construction certification:

**UNCONSTRUCTED AREA(S) WITH FINANCIAL ASSURANCE:** The area(s) identified as West 7.6 acres of Cell 12, totaling 7.6 acres, are included in the calculation of financial assurance as required by Section 11523 of Part 115. This portion(s) of the Facility shall be authorized to receive waste, as part of this license, when acceptable certification is submitted to EGLE, as required by Section 11516(5) of Part 115, and determined by EGLE to be consistent with Part 115 and the Part 115 Rules. The certification shall verify that construction of this area(s) was in accordance with the Construction Permit(s) listed in Item 8 of this license, Part 115, and the Part 115 Rules.

4. The following portions of the Facility are **NOT** authorized to receive solid waste by this license:

**UNCONSTRUCTED AREA(S) WITHOUT FINANCIAL ASSURANCE:** The area(s) identified as East 3.9 acres of Cell 12, Cell 13, and Cells 15-22 are not constructed and are not included in the calculation of financial assurance as required by Section 11523 of Part 115. This area's total acreage is 73.1 acres.

5. The attached map (Attachment A) shows the Facility, the area permitted for construction, monitoring points, leachate storage units, site roads, other disposal areas, and related appurtenances.
6. Issuance of this license is conditioned on the accuracy of the information submitted by the Applicant in the Application for License to Operate a Solid Waste Disposal Area (Application) received by EGLE on May 4, 2022, and any subsequent amendments. Any material or intentional inaccuracies found in that information is grounds for the revocation or modification of this license and may be grounds for enforcement action. The licensee shall inform EGLE's MMD Bay City District Supervisor, of any inaccuracies in the information in the Application upon discovery.
7. This license is issued based on EGLE's review of the Application, submitted by Steve Walters, for the Tri-City Landfill, dated May 4, 2022, revised May 14, 2022, and revised July 18, 2022. The Application consists of the following:
  - a. Application Form EQP 5507.
  - b. Application fee in the amount of \$1,000.00.
  - c. Certification of construction by N/A, dated N/A.
  - d. Waste Characterization: N/A.

Licensee: Waste Management of Michigan, Inc.  
Facility Name: Tri-City Landfill  
Operating License Number: 9678  
Issue Date: August 4, 2022

e. Restrictive Covenant:

The October 25, 2000 restrictive covenant on 124 acres is on file at the Sanilac County Register of Deeds recorded on October 3, 2002, as Liber 593 pages 510-513. A copy is on file with EGLE.

f. Perpetual Care Fund Agreement, established as a standby trust account, signed by Diana Seng, Authorized Representative, Waste Management of Michigan, Inc. on January 13, 2015, was executed by EGLE on January 30, 2015.

g. Financial Assurance.

i. Financial Assurance Required:

The amount of financial assurance required for this Facility was calculated based on the calculation worksheet form EQP 5507A entitled, "Form A, Financial Assurance Required," and is \$11,301,217.20.

The Facility has provided financial assurance totaling \$11,301,217.20, based on the requirements of Section 11523 of Part 115, consisting of a combination of the Perpetual Care Fund established under Section 11525 of Part 115, bonds, and the financial capability of the Applicant as evidenced by a financial test. The financial assurance mechanisms used by the Facility are summarized below in Items ii, iii, and iv, respectively.

ii. Financial Assurance Provided Via a Perpetual Care Fund:

The Perpetual Care Fund Agreement statement showed a balance of \$2,371,392.90 in the Facility's Perpetual Care Fund as of October 31, 2021. Of this amount, EGLE has granted the request to use \$2,371,392.90 toward the total amount of financial assurance required.

iii. Financial Assurance Provided Via Bond:

The following financial assurance has been received from the Applicant to meet the amount of financial assurance required:

Surety Bond	\$8,929,824.30
Total Amount Received:	\$8,929,824.30

iv. Financial Assurance Provided Via a Financial Test for a Type II Landfill: N/A.

v. Financial Assurance Updates Required:

For Type II landfills, the financial assurance cost estimates of closure and postclosure activities must be updated annually and the corresponding requisite amount of financial assurance must be adjusted annually for the costs of inflation. The corresponding financial assurance, as adjusted for inflation and other factors, is due one year from the date of this license, and each year thereafter.

vi. Other Required Financial Assurance: N/A.

8. The following documents approved with Construction Permit Number(s) 0412 issued to the Michigan Waste Systems, Inc., (Cells 1-10) on June 6, 1989, Number 0298 issued to Waste Management of Michigan, Inc., (Cells 11-20) on November 22, 1993, and Number 4123 issued to Waste Management of Michigan, Inc., (Cells 11-20) on May 25, 2012, are incorporated in this license by reference:

Licensee: Waste Management of Michigan, Inc.  
Facility Name: Tri-City Landfill  
Operating License Number: 9678  
Issue Date: August 4, 2022

- a. "Hydrogeological Investigation for the Proposed Expansion of the Tri-City Landfill," prepared by Dell Engineering, Inc., dated 1988.
  - b. "Environmental Plans and Specifications for the Proposed Type II Landfill Expansion at the Tri-City Landfill," prepared by Dell Engineering, Inc., dated 1988.
  - c. "Environmental Assessment for the Proposed Type II Landfill Expansion at the Tri-City Landfill," prepared by Dell Engineering, Inc., dated 1988.
  - d. "Environmental Assessment Report," prepared by Golder Associates, Inc., dated July 1993.
  - e. "Volume I and II, Hydrogeological Study Report," prepared by Golder Associates, Inc., dated July 1993.
  - f. "Engineering Report for Tri-City Recycling and Disposal Facility, Lateral Expansion Construction Permit Application," prepared by Rust Environment and Infrastructure, Inc., dated July 1993, revised November 2, 1993.
  - g. "Lateral Expansion Plans for Tri-City Recycling and Disposal Facility," prepared by Rust Environment and Infrastructure, Inc., dated July 1993, revised November 1, 1993.
  - h. Revised engineering plan drawing 7A titled "Expansion Liner Grade and Leachate Collection Plan," prepared by Rust Environment and Infrastructure, Inc., dated November 18, 1993.
  - i. Engineering Drawings titled "Tri-City Recycling & Disposal Facility Construction Permit Application Vertical Expansion, Sanilac County, Michigan." prepared by Weaver Boos Consultants, dated November 8, 2011, revised May 4, 2012, and May 15, 2012.
  - j. Revised addendum to Hydrogeologic Investigation Volume II Tri-City Recycling & Disposal Facility, prepared by AECOM, dated November 2011, revised May 14, 2012..
9. The following additional documents, approved since the issuance of the construction permit(s) referenced in Item 8, are incorporated in this license by reference:
- a. "Vertical Gradient Information, Tri-City Recycling and Disposal Facility," prepared by Golder Associates, Inc., dated February 25, 1994.
  - b. "Additional Site Characterization Activities Pertinent to Expansion Cell 11, Tri-City RDF South Expansion," prepared by Golder Associates, Inc., dated May 26, 1994.
  - c. "Cell 11B Construction Drawings," prepared by Rust Environment and Infrastructure, Inc., including Mr. Robert N. Ratz, P.E.'s, May 4, 1998, letter to Mr. Edwin Haapala and the attached Settlement Analysis.
  - d. "Tri-City Recycling and Disposal Facility Phase I Landfill Gas System Installation," prepared by Earth Tech, dated October 2000.
  - e. "Tri-City Recycling and Disposal Facility, Leachate Load-Out Areas For Tanks No. 1 and No. 2," prepared by Earth Tech, dated April 21, 2003.
  - f. "Tri-City Recycling and Disposal Facility, Cell 14 Permit Modification and Construction Drawings," prepared by STS Consultants, LTD., dated July 7, 2004, amended July 30, 2004.
  - g. Leachate Recirculation Plan, prepared by STS Consultants, Ltd., dated January 2006, approved February 6, 2006.
  - h. Leachate Storage Tank Plans for proposed 74,000 gallon above ground storage tank, prepared by STS Consultants, Ltd., dated October 2006, approved March 7, 2007.

Licensee: Waste Management of Michigan, Inc.  
Facility Name: Tri-City Landfill  
Operating License Number: 9678  
Issue Date: August 4, 2022

- i. Plan titled "Work Plan for Monitoring Well and Gas Monitoring Probe Installation and Decommissioning", prepared by NTH Consultants, dated July 13, 2012, approved August 17, 2012.
  - j. Plan titled "Liquid Industrial Waste Solidification Plan", dated July 8, 2014, revised December 1, 2014.
  - k. "Hydrogeological Monitoring Plan, Tri-City Recycling and Disposal Facility, WDS# 417640", submitted by Golder Associates Inc. on behalf of Tri-City Recycling and Disposal Facility, dated February 2020.
10. Consent Order/Judgment Number: N/A.
11. The licensee shall repair any portion of the certified liner or leachate collection system that is found to be deficient or damaged during the term of this license unless determined otherwise by EGLE.
12. The licensee shall have repairs to any portion of the certified liner or leachate collection system recertified by a registered professional engineer in accordance with R 299.4921 of the Part 115 Rules and approved by EGLE before receiving waste in that portion of the certified liner or leachate collection system. The licensee shall submit the recertification to EGLE's MMD Bay City District Supervisor, for review and approval.
13. The licensee shall conduct hydrogeological monitoring in accordance with the approved hydrogeological monitoring plan, dated February 2020. The sampling analytical results shall be submitted to EGLE's MMD Bay City District office.
14. Modifications to the approved hydrogeological monitoring plan referenced in Item 13 may be approved, in writing, by EGLE's MMD Bay City District Supervisor. Proposed revisions must be submitted in a format specified by EGLE.
15. Leachate may be recirculated if a leachate recirculation plan has been approved, in writing, by EGLE's MMD Bay City District Supervisor.
16. Modifications to approved engineering plans that constitute an upgrading, as defined in R 299.4106a(l) of the Part 115 Rules, may be approved, in writing, by EGLE's MMD Bay City District Supervisor.
17. Requests for alternate daily cover may be approved, in writing, by EGLE's MMD Bay City District Supervisor.
18. Leakage Control Criteria:
- a. The active portions of the unit(s) (Cells 1-11) authorized to receive waste by this license is a monitorable unit(s) which is located over a natural soil barrier and that is in compliance with the provisions of R 299.4422(2) of the Part 115 Rules.
  - b. The active portions of the unit(s) (Cell 14) authorized to receive waste by this license is a monitorable unit(s) designed with a double-liner system that is in compliance with the provisions of R 299.4422(3) of the Part 115 Rules and that is capable of detecting and collecting leakage through the primary composite liner. The action flow rate for each unit containing a secondary collection system is 25 gallons/acre/day.
19. **VARIANCES:** The licensee is granted the following variance(s) from Part 115 and/or the Part 115 Rules: None.
20. **SPECIAL CONDITIONS:**
- a. The licensee shall place a compacted layer of not less than six inches of earthen material, unless an exemption is granted, of suitable cover material on all exposed solid waste by the end of each working day, as required by R 299.4429(1) of the Part 115 Rules. Suitable cover shall be either uncontaminated soil or an alternate cover approved by the MMD, listed in Item i, below. Alternate cover shall be restricted as indicated in Item ii and applied as per the approved operational plan submitted by the licensee.

Licensee: Waste Management of Michigan, Inc.  
 Facility Name: Tri-City Landfill  
 Operating License Number: 9678  
 Issue Date: August 4, 2022

i. Approved alternate cover shall be any of the following:

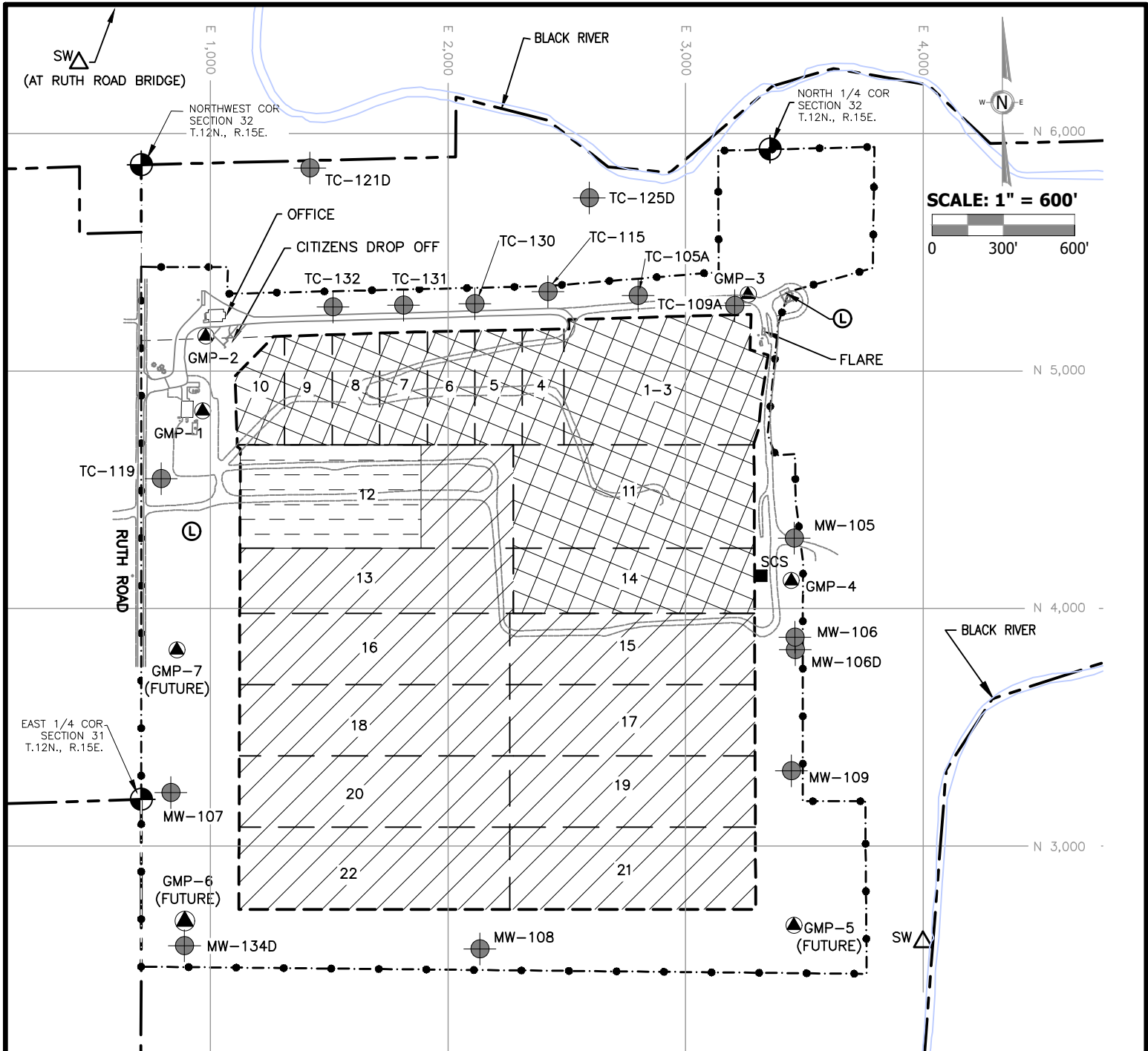
<u>Product/Waste Material</u>	<u>Source</u>	<u>Monthly Volume</u>
(1) Fabrisoil		Per Manufactures specifications
(2) Sanifoam		Per manufactures specifications
(3) Concover		Per manufactures specifications
(4) Paper mill sludge	E.B. Eddy Paper, Inc. Blue Water Fiber Limited Partnership	As needed
(5) Untreated wood chips		As needed
(6) Tire chips		As needed
(7) Ground/shredded shingles		As needed
(8) Wastewater lagoon sludge	Dean Specialty Foods Group	As needed
(9) Bottom Coal Ash	Michigan Sugar Company	As needed

ii. The above materials are approved for daily cover when used in the following manner:

- (1) The licensee shall use the material as daily cover only. The material cannot be used for road building or fill in other areas of the Facility's operation.
- (2) The licensee shall maintain copies of the testing performed on Class B and Class C materials in the facility operating record.
- (3) The licensee shall only stockpile material in a secure manner within the active cell.
- (4) This approval does not preclude the licensee from disposing of the material as waste in the active fill area instead of using the material as daily cover.
- (5) This approval shall immediately become void upon documentation by EGLE that the alternative cover is not being used in accordance with listed conditions, that the alternative cover is not providing the necessary protection, that the material no longer meets the alternative daily cover guidelines, or that the process producing the waste material has changed.
- (6) If the material does not meet the guidelines from Attachment 2 of Policy and Procedure OWMRP-115-10, for nonvolatiles, the licensee shall ensure that fugitive dust emissions from this material do not occur. Acceptable methods to ensure fugitive emissions do not occur are:
  - (a) Implement a schedule to wet down material; or
  - (b) Cover the material with a tarp; or
  - (c) Apply an approved foam or other appropriate commercial dust control product.
- (7) This approval to use alternative cover shall expire upon expiration of this operating license.

21. **TERM:** This license shall remain in effect until its expiration date, unless revoked or continued in effect, as provided by, the Administrative Procedures Act, 1969 PA 306, as amended, or unless superseded by the issuance of a subsequent license.

**END OF LICENSE**



SCALE: 1" = 600'

0 300' 600'

FACILITY SUMMARY		
	ACTIVE AREA NOT AT FINAL GRADE	41.3 ACRES
	UNCONSTRUCTED AREA W/O FINANCIAL ASSURANCE	73.1 ACRES
	UNCONSTRUCTED AREA W/ FINANCIAL ASSURANCE	7.6 ACRES
	ISOLATION & ANCILLARY AREA	73.4 ACRES
TOTAL PERMITTED AREA		195.4 ACRES

LEGEND	
	PROPERTY LINE
	SOLID WASTE BOUNDARY
	FACILITY BOUNDARY
	CELL LIMITS
	TC-1 EXISTING GROUNDWATER WELL LOCATIONS
	LEACHATE MONITORING LOCATION
	GMP-2 GAS MONITORING PROBE
	SCS MONITORING LOCATION
	SURFACE WATER MONITORING LOCATION

PREPARED FOR

426 North Ruth Road  
Carsonville, Michigan 48418  
810-657-9313

**FACILITY MAP**  
TRI-CITY LANDFILL 2022 LICENSE APPLICATION  
CARSONVILLE, MICHIGAN

REUSE OF DOCUMENTS

THIS DOCUMENT, AND THE DESIGNS INCORPORATED HEREIN, AS AN INSTRUMENT OF PROFESSIONAL SERVICE, IS THE PROPERTY OF WEAVER CONSULTANTS GROUP, AND IS NOT TO BE USED IN WHOLE OR IN PART, WITHOUT THE WRITTEN AUTHORIZATION OF WEAVER CONSULTANTS GROUP.

**Weaver Consultants Group**  
GRAND RAPIDS, MICHIGAN  
(616) 458-8052 www.wcgrp.com

DRAWN BY: JDA  
REVIEWED BY: TAP  
DATE: 05/04/2022  
FILE: 0086-318-10-11  
CAD: TRICITY\_2022\_FAC\_MAP

**FIGURE 1**

R:\PROJECTS\0086 - WMM\0086-318 Tri-City\10.2022 License Application\TRICITY\_2022\_FAC\_MAP.dwg