



Michigan Department of Environment, Great Lakes, and Energy
Materials Management Division

SOLID WASTE DISPOSAL AREA OPERATING LICENSE

Effective April 22, 2019, the Michigan Department of Environmental Quality, by Executive Order Number 2019-06, became the Michigan Department of Environment, Great Lakes, and Energy (EGLE). Effective April 22, 2019, the Waste Management and Radiological Protection Division became the Materials Management Division (MMD).

This license is issued under the provisions of Part 115, Solid Waste Management, of the Natural Resources and Environmental Protection Act, 1994 PA 451, as amended, MCL 324.11501 et seq., and authorizes the operation of this solid waste disposal area (Facility) in the state of Michigan. This license does not obviate the need to obtain other authorizations as may be required by state law.

FACILITY NAME: Verso Quinnesec LLC

LICENSEE/OPERATOR: Verso Quinnesec LLC

FACILITY OWNER: Verso Quinnesec LLC

PROPERTY OWNER: Verso Quinnesec LLC

FACILITY TYPE(S): Type III Low Hazard Industrial Landfill

FACILITY ID NUMBER: 474294

COUNTY: Dickinson

LICENSE NUMBER: 9652

ISSUE DATE: July 9, 2021

EXPIRATION DATE: July 9, 2026

FACILITY DESCRIPTION: The Verso Quinnesec LLC, a Type III low hazard industrial landfill, consists of 94 acres located in the N 1/2 of the NW 1/4 of Section 13 and the S 1/2 of the SW 1/4 of Section 12, T39N, R30W, Breitung Township, Dickinson County, Michigan, as identified in Attachment A and fully described in this license.

AREA AUTHORIZED FOR DISPOSAL OF SOLID WASTE: Phases 1 - 4, totaling 46 acres.

RESPONSIBLE PARTY: Mr. Dennis Perpich
Verso Quinnesec LLC
W6791 US Highway 2
Quinnesec, Michigan 49876
906-779-3201

RENEWAL OPERATING LICENSE: This License Number 9652 supersedes and replaces Solid Waste Disposal Area Operating License Number 9481 issued to Verso Quinnesec LLC on August 5, 2016.

This license is subject to revocation by the Director of the Michigan Department of Environment, Great Lakes, and Energy, if the Director finds that this Facility is not being constructed or operated in accordance with the approved plans, the conditions of a permit or license, Part 115, or the rules promulgated under Part 115. Failure to comply with the terms and provisions of this license may result in legal action leading to civil and/or criminal penalties pursuant to Part 115. This license shall be available through the licensee during its term and remains the property of the Director.

THIS LICENSE IS NOT TRANSFERABLE.

Rhonda S. Oyer, Manager, Solid Waste Section
Materials Management Division

Licensee: Verso Quinnesec LLC
Facility Name: Verso Quinnesec LLC
Operating License Number: 9652
Issue Date: July 9, 2021

The licensee shall comply with all terms of this license and the provisions of Part 115 and the administrative rules implementing Part 115 (Part 115 Rules). This license includes the license application and any attachments to this license.

1. The licensee shall operate the Facility in a manner that will prevent violations of any state or federal law.
2. The following portions of the Facility are authorized to receive solid waste by this license:

ACTIVE PORTIONS NOT AT FINAL GRADE: The area(s) identified as Phases 1 - 4 were authorized to receive waste by the previous license. This area's total acreage is 46 acres.

3. The following portions of the Facility **WILL BE** authorized to receive solid waste by this license following approval by EGLE of construction certification: None.
4. The following portions of the Facility are **NOT** authorized to receive solid waste by this license:

UNCONSTRUCTED AREA(S) WITHOUT FINANCIAL ASSURANCE: The area(s) identified as Phase 5 are not constructed and are not included in the calculation of financial assurance as required by Section 11523 of Part 115. This area's total acreage is 10 acres.

5. The attached map (Attachment A) shows the Facility, the area permitted for construction, monitoring points, leachate storage units, site roads, other disposal areas, and related appurtenances.
6. Issuance of this license is conditioned on the accuracy of the information submitted by the Applicant in the Application for License to Operate a Solid Waste Disposal Area (Application) received by EGLE on June 1, 2021, and any subsequent amendments. Any material or intentional inaccuracies found in that information is grounds for the revocation or modification of this license and may be grounds for enforcement action. The licensee shall inform EGLE's MMD Marquette District Supervisor, of any inaccuracies in the information in the Application upon discovery.
7. This license is issued based on EGLE's review of the Application, submitted by Verso Quinnesec LLC, for the Verso Quinnesec LLC, dated May 26, 2021. The Application consists of the following:

- a. Application Form EQP 5507.
- b. Application fee in the amount of \$2,500.00.
- c. Certification of construction by: N/A.
- d. Waste Characterization: N/A.
- e. Restrictive Covenant:

The December 20, 2004 restrictive covenant on 93.95 acres is on file at the Dickinson County Register of Deeds recorded on January 27, 2005, as Liber 563 pages 588-592. A copy is on file with EGLE.

- f. Perpetual Care Fund Agreement, established as an escrow account, signed by Timothy Nusbaum, Treasurer, Verso Quinnesec LLC on August 3, 2016, was executed by EGLE on August 5, 2016.

g. Financial Assurance.

i. Financial Assurance Required:

The amount of financial assurance required for this Facility was calculated based on the calculation worksheet form EQP 5507 entitled, "Form A, Financial Assurance Required," and includes a Surety Bond of \$20,000.00 per acre of licensed landfill, and the Perpetual Care Fund requirement.

The Facility has provided financial assurance totaling \$1,854,288.12 based on the requirements of Section 11523 of Part 115, consisting of a combination of the Perpetual Care Fund established under Section 11525 of Part 115, and the bonding requirements of Section 11523 (1)(a) of Part 115. The financial assurance mechanisms used by the Facility are summarized below in Items ii and iii, respectively.

ii. Financial Assurance Provided Via a Perpetual Care Fund:

The Perpetual Care Fund Agreement statement showed a balance of \$934,288.12 in the Facility's Perpetual Care Fund as of April 30, 2021. Of this amount, EGLE has granted the request to use \$934,288.12 toward the total amount of financial assurance required.

iii. Financial Assurance Provided Via Bond:

The following financial assurance has been received from the Applicant to meet the amount of financial assurance required:

Irrevocable Letter of Credit	\$920,000.00
Total Amount Received:	\$920,000.00

8. The following documents approved with Construction Permit Number(s) 0294 issued to the Champion International Corporation on May 21, 1993, are incorporated in this license by reference:

- a. Operations Plan dated May 21, 1993.
- b. Engineering Plans dated May 21, 1993.
- c. Engineering Report dated May 21, 1993.
- d. Construction Quality Assurance Plan dated May 21, 1993.
- e. Hydrogeological Report dated May 21, 1993.

9. The following additional documents, approved since the issuance of the construction permit(s) referenced in Item 8, are incorporated in this license by reference:

- a. Construction Project Manual for Champion International Corporation (CQA Plan) dated February 1995, and approved by EGLE on May 12, 1995.
- b. Hydrogeologic Monitoring Plan Phases 1-5 Landfill, Verso Quinnesec LLC, dated January 2016, and approved by EGLE on February 17, 2016.
- c. Landfill Operations Manual, Verso Quinnesec LLC, dated May 2016, and approved by EGLE on May 31, 2016.

10. Consent Order/Judgment Number: N/A.

11. The licensee shall repair any portion of the certified liner or leachate collection system that is found to be deficient or damaged during the term of this license unless determined otherwise by EGLE.

12. The licensee shall have repairs to any portion of the certified liner or leachate collection system recertified by a registered professional engineer in accordance with R 299.4921 of the Part 115 Rules and approved by EGLE before receiving waste in that portion of the certified liner or leachate collection system. The licensee shall submit the recertification to EGLE's MMD Marquette District Supervisor, for review and approval.

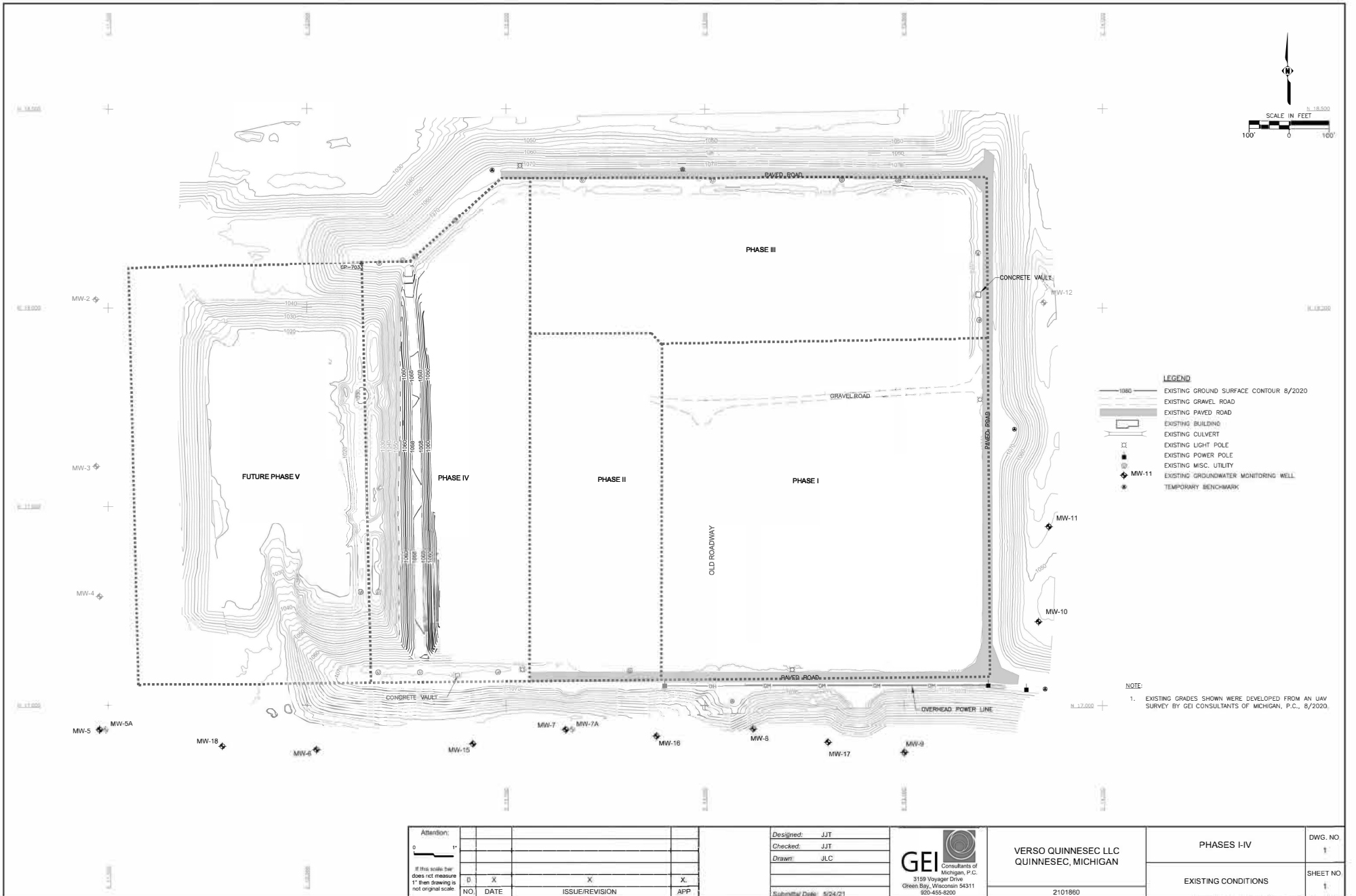
Licensee: Verso Quinnesec LLC
Facility Name: Verso Quinnesec LLC
Operating License Number: 9652
Issue Date: July 9, 2021

13. The licensee shall conduct hydrogeological monitoring in accordance with the approved hydrogeological monitoring plan, dated January 2016, and approved by EGLE on February 17, 2016. The sampling analytical results shall be submitted to EGLE's MMD Marquette District office.
14. Modifications to the approved hydrogeological monitoring plan referenced in Item 13 may be approved, in writing, by EGLE's MMD Marquette District Supervisor. Proposed revisions must be submitted in a format specified by EGLE.
15. Leachate may be recirculated if a leachate recirculation plan has been approved, in writing, by EGLE's MMD Marquette District Supervisor.
16. Modifications to approved engineering plans that constitute an upgrading, as defined in R 299.4106a(l) of the Part 115 Rules, may be approved, in writing, by EGLE's MMD Marquette District Supervisor.
17. Requests for alternate daily cover may be approved, in writing, by EGLE's MMD Marquette District Supervisor.
18. Leakage Control Criteria:

This Type III Facility is a monitorable unit and, therefore, does not need to be in compliance with the leakage control criteria of R 299.4422 of the Part 115 Rules.
19. **VARIANCES:** The licensee is granted the following variance(s) from Part 115 and/or the Part 115 Rules: None.
20. **SPECIAL CONDITIONS:** N/A.
21. **TERM:** This license shall remain in effect until its expiration date, unless revoked or continued in effect, as provided by, the Administrative Procedures Act, 1969 PA 306, as amended, or unless superseded by the issuance of a subsequent license.

END OF LICENSE

Attachment A



NOTE:
1. EXISTING GRADES SHOWN WERE DEVELOPED FROM AN UAV SURVEY BY GEI CONSULTANTS OF MICHIGAN, P.C., 8/2020.

Attention:				
NO	DATE	ISSUE/REVISION	APP	

Designed: JJT
Checked: JJT
Drawn: JLC
Submitted Date: 5/24/21



VERSO QUINNESEC LLC
QUINNESEC, MICHIGAN
2101860

PHASES I-IV	DWG. NO.
EXISTING CONDITIONS	1
	SHEET NO.
	1