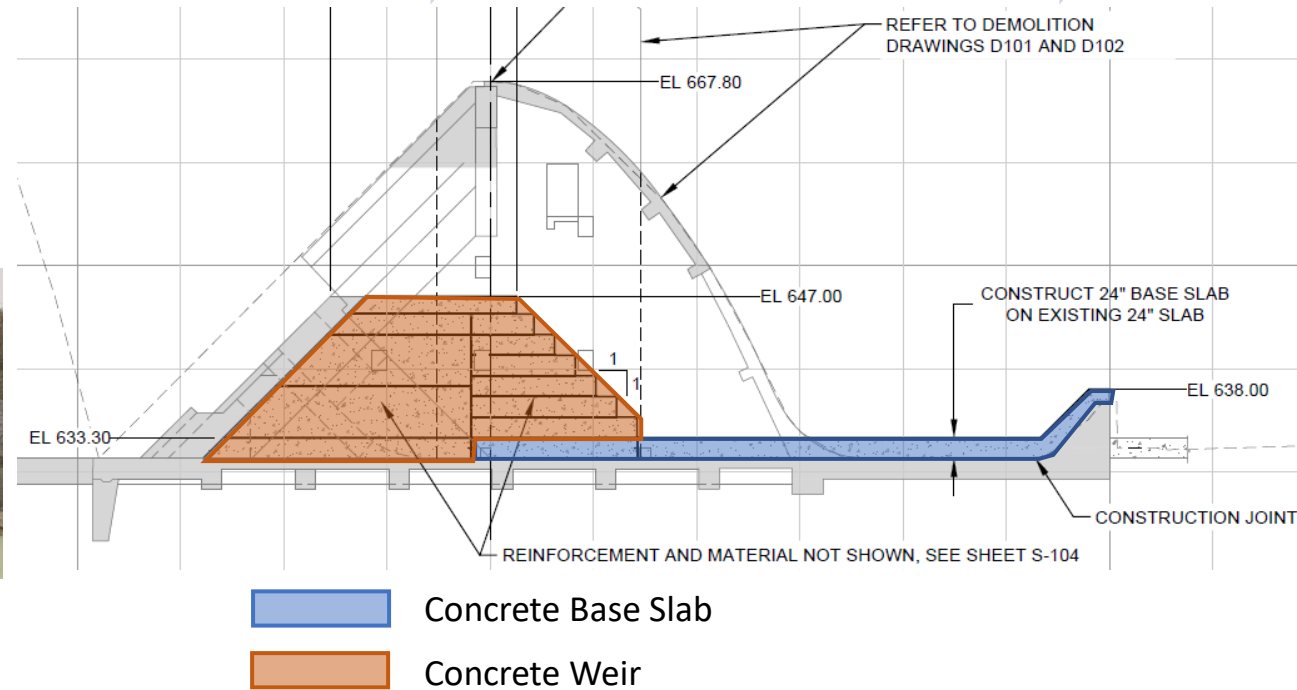
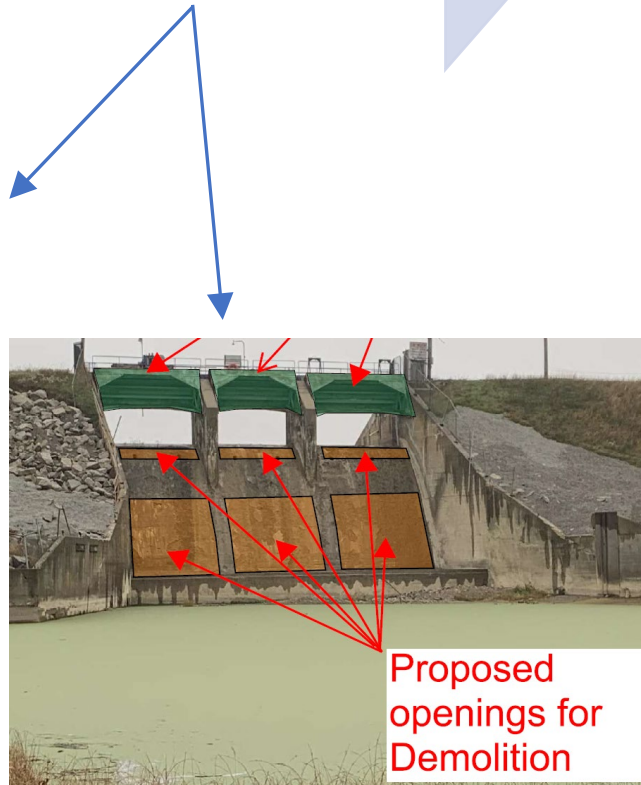
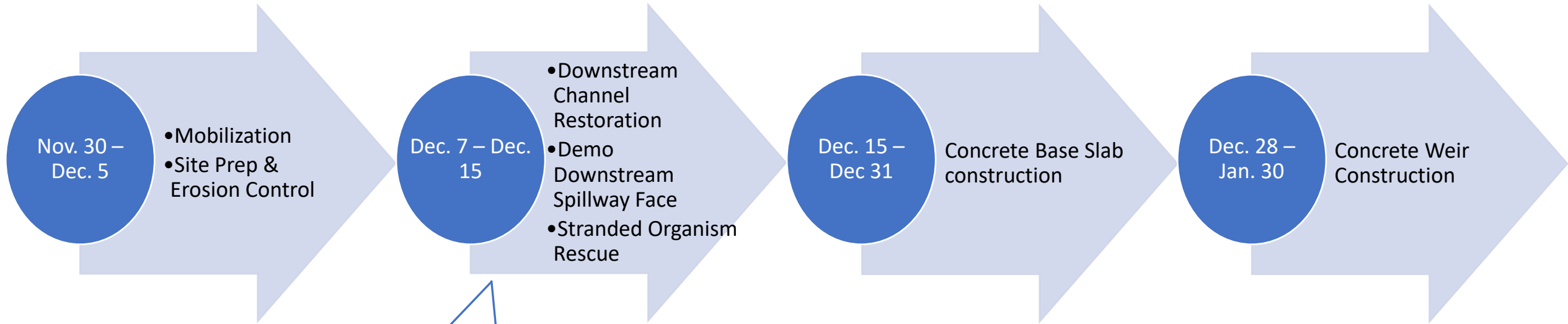


Edenville Dam - Tobacco Spillway Modification Project Schedule



Edenville Dam - Tobacco Spillway Modification Project Schedule

Jan. 26 –
Feb. 2

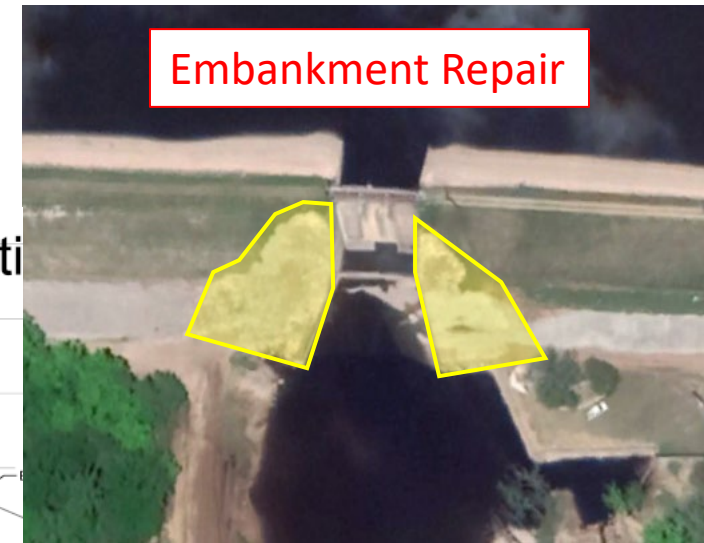
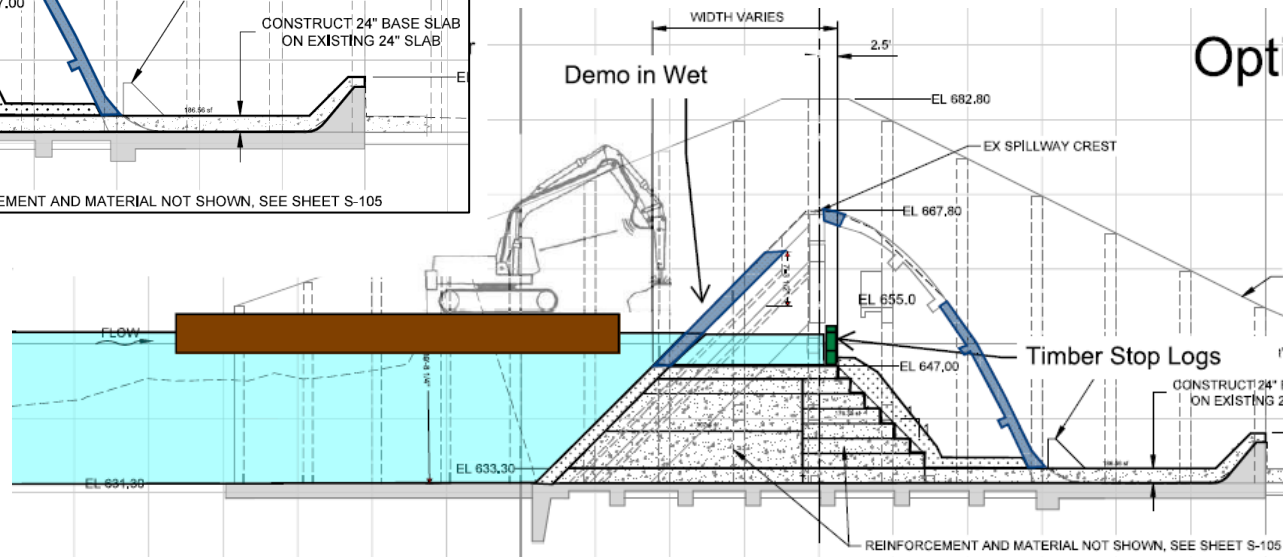
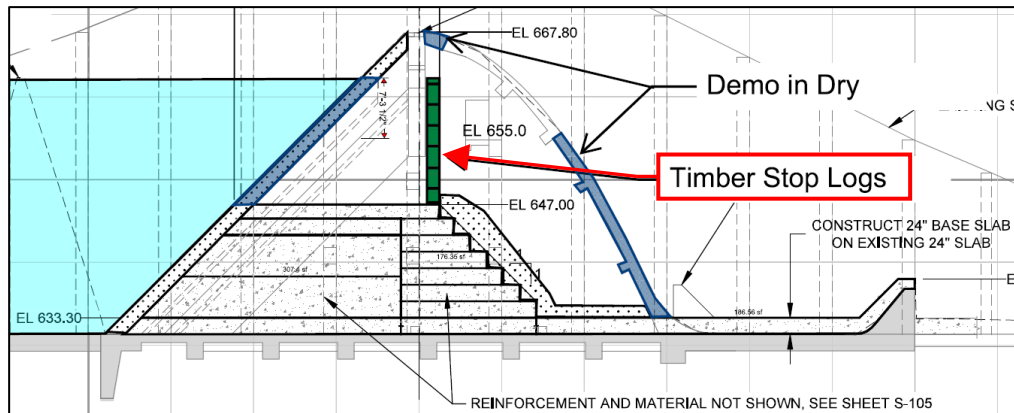
Stop Log System
Installation

Feb. 5 –
Feb. 19

- Demo upstream Spillway Face
- Lower Tobacco Impoundment
- Stranded Organism Rescue
- Upstream Channel Stability Monitoring

Mar. 23 –
Apr. 16

- Embankment Repair and Stabilization
- Final grading and seeding
- Upstream channel stability maintenance



Edenville Dam - Tobacco Spillway Modification Project Schedule

Why is this work being done?

Initial investigations of the remaining dam have identified concerns over hydraulic capacity and structural stability as well as impacts to natural resources and transportation. Engineering evaluations have determined that spring flows could put the dam at risk of a second breach and failure on the Tobacco side of the dam.

How was this solution decided upon?

An alternatives analysis was performed to evaluate multiple options for addressing the concerns. Each alternative was scored based on various factors including safety, schedule, impacts, risks, operation and maintenance, and public and stakeholder perception. The proposed project achieved the highest score based primarily on meeting the time constraints (substantial completion by mid-February), reducing dam safety risks, and minimizing upstream impacts.

How will this project affect the water levels?

The water levels behind the dam will be lowered in a safe and controlled level, roughly 13 feet from their current level. This lowering will divert flow back through the spillway and allow for more capacity at the spillway. Additionally, this will reduce the strain on the earthen dam and improve its stability.

Will the work affect water wells in the area?

Long term effects of changes in ground water levels caused by the collapse of the dams will not be known for some time, but some shallow water wells near the shores of the former lakes have gone dry. It's unclear what impact the work related to the safety measures at the Edenville dam will have on the water table and property owners' wells. If residents are having issues with their wells, they should contact the emergency managers for either Midland or Gladwin Counties or the local health department. Local officials may be able to offer help with funding or resources to repair or drill deeper wells.

Can I still access the lake or bottomlands?

We urge people to stay off the water, ice and bottomlands in the Tobacco impoundment during construction (through Spring 2021). Due to the changes in water level currently and during the proposed lowering, we anticipate faster moving water and extremely dangerous ice conditions.

More resources

- [Dam Safety Program website](#)
- [Edenville Dam Failure website](#)

Edenville Dam - Tobacco Spillway Modification Project Schedule

For information or assistance on this publication, please contact the Water Resources Division, through the EGLE Environmental Assistance Center at 800-662-9278. This publication is available in alternative formats upon request.

EGLE does not discriminate on the basis of race, sex, religion, age, national origin, color, marital status, disability, political beliefs, height, weight, genetic information, or sexual orientation in the administration of any of its programs or activities, and prohibits intimidation and retaliation, as required by applicable laws and regulations.



EGLE Environmental Assistance Center: 800-662-9278

[Michigan.gov/EGLE](https://www.michigan.gov/EGLE)

Rev. 12/2020