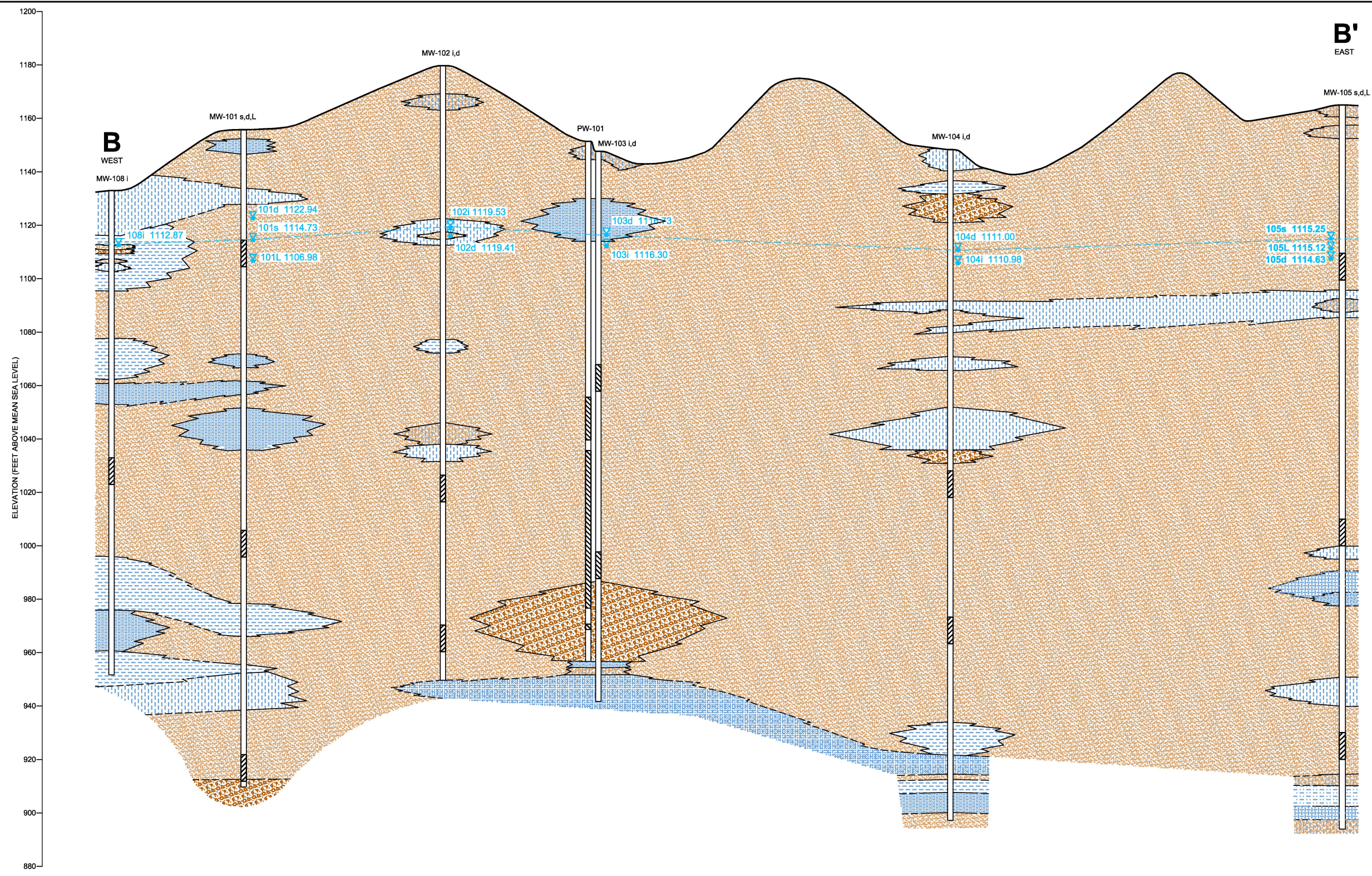


User: AXENS Spec: PIRNIE STANDARD File: J:\4066031 Source Identity Report\September 2009 Final\Figures\dwg\FIG 5B GSWA_SHC_B.DWG Scale: 1:1 Date: 06/29/2010 Time: 13:22 Layout: 34x22

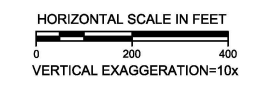


LEGEND

- SANDS WITH DISCONTINUOUS CLAY, SILT AND GRAVEL LAYERS 5 FEET THICK OR LESS
- SILT
- SILTY SAND
- SILT AND CLAY
- GRAVEL OR SAND WITH GRAVEL
- CLAY
- CLAYEY SAND
- INTERBEDDED SAND, SILT, AND CLAY
- INFERRED POTENTIOMETRIC SURFACE
- STATIC WATER LEVEL MEASURED 10/29/02
- SCREENED INTERVAL

NOTES

- GEOLOGIC CROSS SECTION IS INTERPRETATION OF FIELD DATA.
- PRODUCTION WELL PW-101 LITHOLOGY BASED ON MW-103D BORING LOG.



ATTACHMENT 4B

NOVEMBER 2015



NESTLE WATERS NORTH AMERICA
 WHITE PINE SPRING PROJECT
 OSCEOLA TOWNSHIP, MICHIGAN
STRATIGRAPHIC CROSS SECTION B-B'